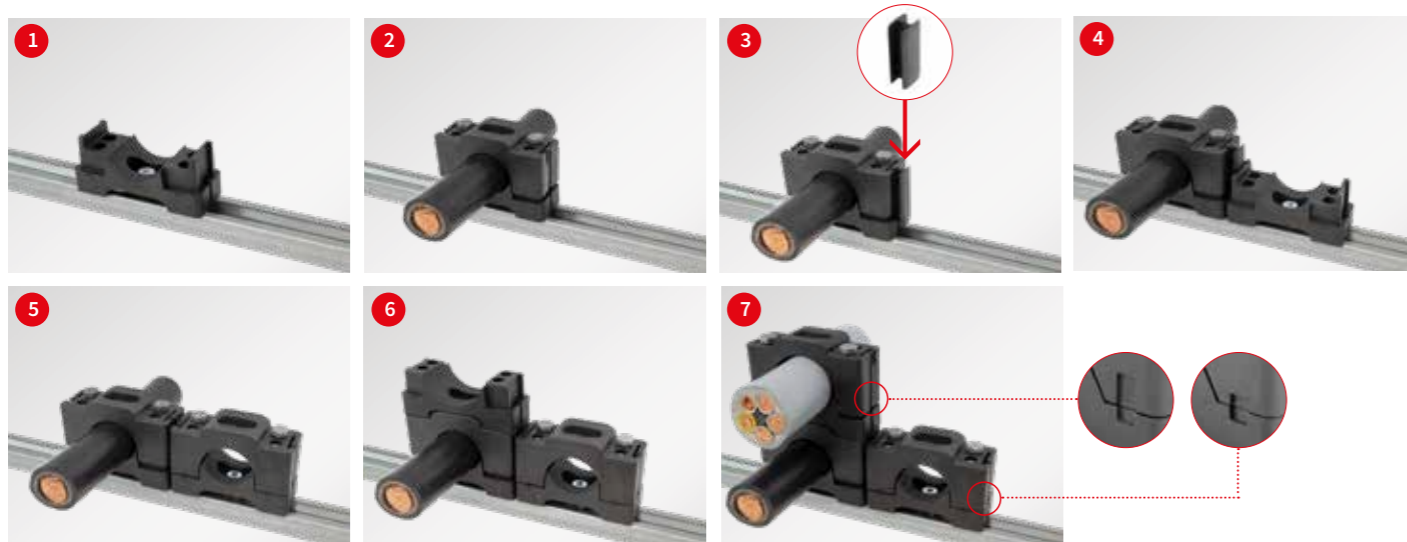


## Assembly instructions – lining up and stacking



Description	Type	Clamping range	Dimensions Length x Width x Height	Order No.	PU
Cable clamp Set A 10-22	MSMC 10-22   Set A	10 – 22 mm	64 x 26 x 47 mm	32400	5
Cable clamp Set B 10-22	MSMC 10-22   Set B	10 – 22 mm	64 x 26 x 47 mm	32401	5
Cable clamp Set A 20-32	MSMC 20-32   Set A	20 – 32 mm	64 x 26 x 47 mm	32410	5
Cable clamp Set B 20-32	MSMC 20-32   Set B	20 – 32 mm	64 x 26 x 47 mm	32411	5
Cable clamp Set A 30-46	MSMC 30-46   Set A	30 – 46 mm	100 x 40 x 64,5 mm	32420	5
Cable clamp Set B 30-46	MSMC 30-46   Set B	30 – 46 mm	100 x 40 x 64,5 mm	32421	5
Cable clamp Set A 44-55	MSMC 44-55   Set A	44 – 55 mm	100 x 40 x 72,5 mm	32430	5
Cable clamp Set B 44-55	MSMC 44-55   Set B	44 – 55 mm	100 x 40 x 72,5 mm	32431	5
Coupler for cable clamp small 10-22, 20-32	CMC 10	–	35 x 13,4 x 12 mm	32598	10
Coupler for cable clamp large 30-46, 44-55	CMC 30	–	50 x 20 x 15 mm	32599	10
Sliding nut for C-rail for cable clamp small 10-22, 20-32 including M5 hexagon head screw	SCMC 10	–	40 x 28 x 6,5 mm	32596	5
Sliding nut for C-rail for cable clamp large 30-46, 44-55 including M8 hexagon head screw	SCMC 30	–	40 x 28 x 6,5 mm	32597	5

Set A = Assembly in row and height  
Set B = Assembly in row

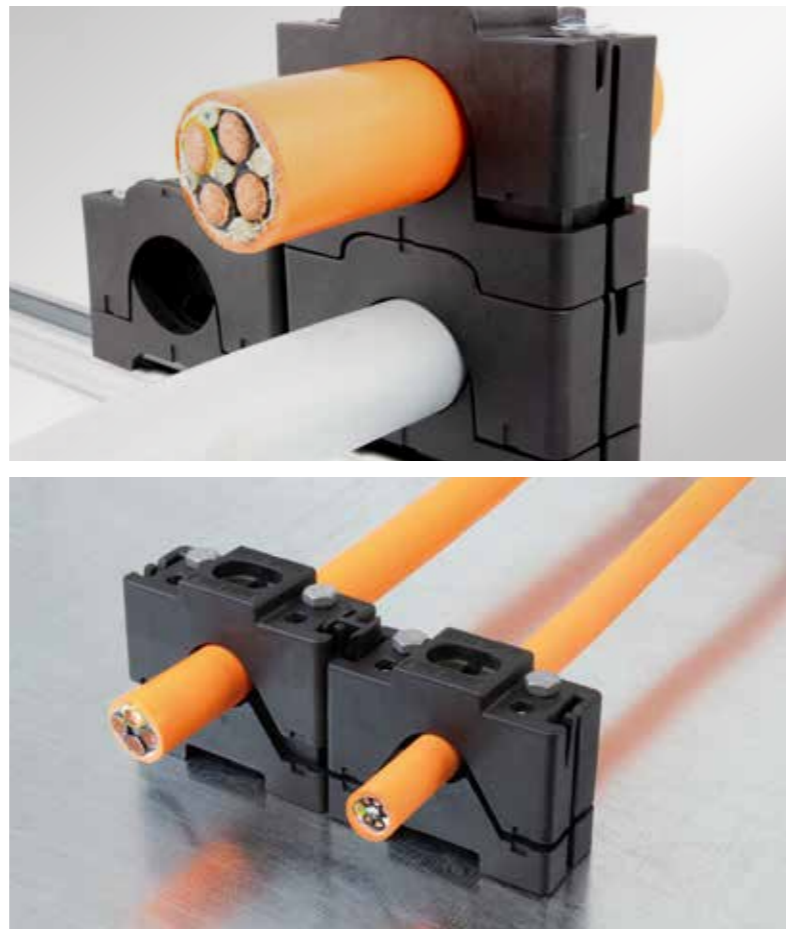
## Specifications

Material	Polyamide (PA)
Colour	black
Flame class	UL 94 V-0, self-extinguishing
Temperature	-40°C to +140°C (static)
Properties	Halogen free, silicon free

Suitable for large cable diameters up to 55 mm

# Modular stackable cable clamp MSMC





## Large and small cables almost infinitely expandable

- Several cable clamps can be lined up or stacked together
- The diameter of the cables can vary up to 16 mm
- Designed for high strain relief
- Suitable for large cable diameters up to 55 mm
- Suitable for large bending radii of rigid cables
- Assembly on surfaces or on the C-rail
- Ridges in the half shells enable the absorption of tensile and torsional forces
- Anti-rotation lock during assembly with two through bolts
- The coupler can be used as a mounting aid for overhead mounting
- Weather-resistant material
- Screws are included



## Stackable horizontally and vertically – suitable for cable diameters up to 55 mm

The modular stackable cable clamp MSMC is used for easy, quick and secure fastening of cables, pipes and other cylindrical components. The great advantage of this cable clamp is that it can be easily extended by stacking or lining up.

By using the CMC30 connector, different clamping areas can be connected to each other. The MSMC offers a very high level of corrosion protection thanks to the choice of materials for the cable clamps and screws.

