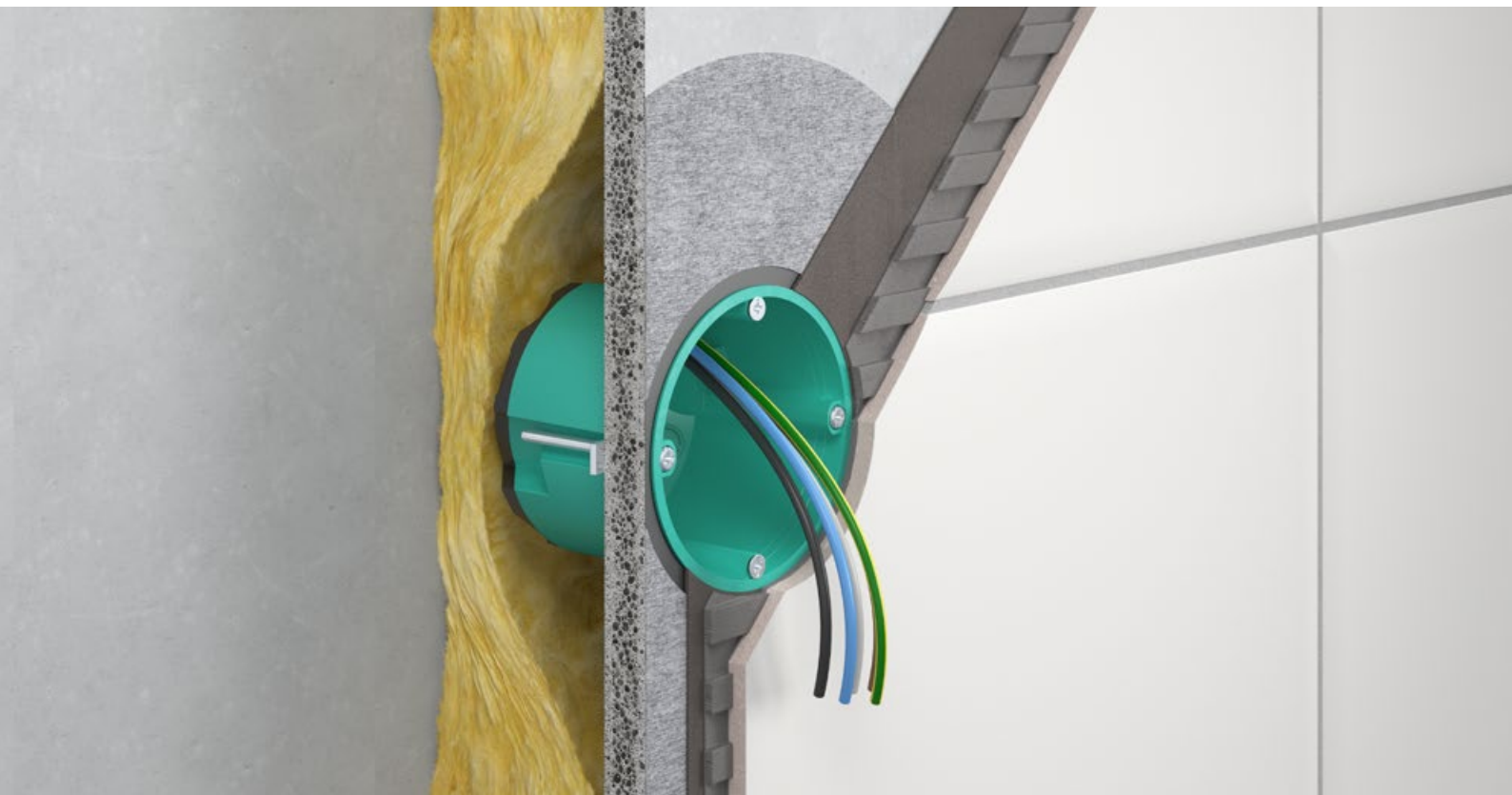


Damp room one-gang junction box.

Certified for applications
acc. to DIN 18534.

For the professional incorporation of electrical installations
into the sealing system in the damp room.



At a glance.

NEW

Damp room one-gang junction box

- Peripheral 5 cm wide adhesive collar to hold mineral sealing materials, e.g. sealing slurries
- Convenient sealing into the sealing layer thanks to the fleece-like surface of the sealing sleeve
- For professional installation in sealed interior rooms, such as commercial kitchens, bathroom modules or damp rooms in hospitals
- Tested and certified water tightness or applications acc. to DIN 18534
- Air-tight and watertight cable entries
- Device screws with plus-minus drive



Depth	62 mm
For panel thickness	7 - 40 mm
Cut hole Ø	68 mm
Screw spacing	60 mm
Wire entries up to Ø 11,5 mm	6
Halogen-free, air-tight, water tightness according to DIN 18534	Ja
Art.-No.	9264-42
Packaging inner/dispatch	10 / 100

More information about the certificate and product on our website at www.kaiser-elektro.de

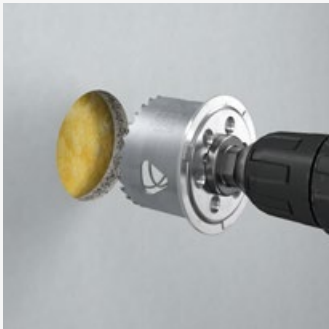


Animation



Website

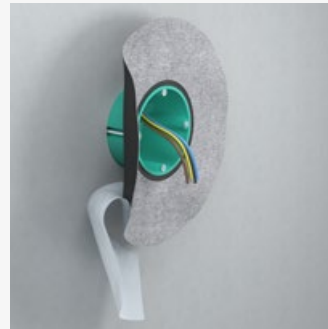
Assembly



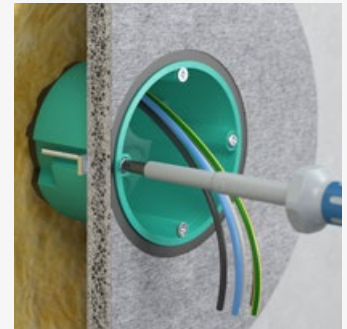
Create the precise installation opening of Ø 68 mm using KAISER cutter EXPERT (Art. no. 1082-30).



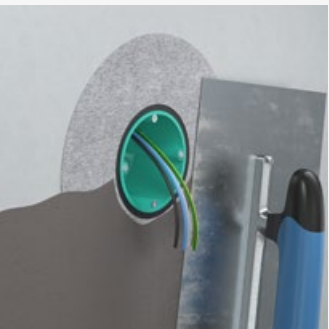
Open the wire entries using the KAISER universal opening cutter (Art. no. 1085-80) and insert the electric cables up to Ø 11.5 mm.



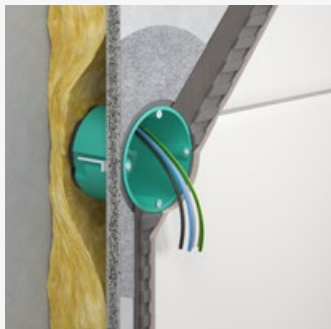
Gradually remove the backing film, align the box in the installation opening and then spread the self-adhesive sleeve on the wall surface.



Fix the box in the installation opening by means of lug mounting.



Application of the sealing layer (e.g. flexible sealing slurry).



Application of the wall covering (e.g. tiled walls).



Fixing the installation accessories using device screws.



To comply with the IP protection class, the plaster equalising ring (Art. No. 9155-61 or -62) can be fitted for structural wall coverings > 10 mm.

Technical information and advice

All further information on products, system solutions and communication media can be found on our website at www.kaiser-elektro.de

For additional questions or information, our team of technical consultants will be happy to assist you and look forward to talking to you: **+49 (0) 23 55 / 809-61 · technik@kaiser-elektro.de**

KAISER GmbH & Co. KG

Ramsloh 4 · 58579 Schalksmühle
GERMANY
Tel. +49 (0) 23 55 / 809-0 · info@kaiser-elektro.de
www.kaiser-elektro.de

KAISER
Member of KAISER GROUP