

SpaceLogic KNX Hybrid module

Extend KNX with Wiser

se.com



Life Is On

Schneider
Electric

Table of contents

Discover SpaceLogic
KNX Hybrid module

1

KNX meets Wiser

2

Experience best
of both worlds

3

Easy installation and
configuration

4

Wiser KNX app

5

Use cases

6

SpaceLogic KNX Hybrid Solution

Upgrade your KNX installations effortlessly, without the need to replace existing cables. Whether you're renovating or building a new house or building, futureproofing your living space has never been easier with the innovative SpaceLogic KNX Hybrid solution.



With the introduction of the KNX Hybrid Module, seamlessly integrate Schneider Electric's Wiser wireless offering into your Wiser for KNX or spaceLYnk controllers. This integration allows you to expand the capabilities of your KNX installation and unlock a whole new level of functionality.

The SpaceLogic KNX Hybrid solution provides a convenient and cost-effective way to enhance your home and building automation system. By combining the power of wired KNX technology with the flexibility of wireless connectivity, you can easily extend your control to areas that were previously hard to reach.



KNX meets Wiser

With the integration of ZigBee protocol, our KNX Hybrid module enables seamless communication with a wide range of Wiser products.

With Wiser, you get access to a comprehensive range of wireless solutions designed to enhance your home and building automation with KNX. You can effortlessly take control of your lighting, blinds, energy consumption, heating, and more:

- **Switches:** Our stylish switches offer a seamless way to control your lights and blinds, available in a variety of design ranges to match your personal style and decor.
- **Smart Sockets:** Monitor and manage your energy consumption with our intelligent sockets, giving you valuable insights and the ability to control your devices remotely.
- **Heating:** Enjoy customized comfort on a room-by-room level with our needs-based heating system. It seamlessly adapts to your schedule and creates the perfect environment for any occasion.
- **Sensors:** Enhance safety and convenience with our easy-to-install Wiser sensors. Experience increased security and automation in your home or building with effortless integration.



Lighting



Blinds



HVAC



Energy Management



Peace of mind

Water leakage sensor, temperature/humidity sensor, smoke alarm



Security

Window/door sensor, motion sensor





Experience the best of both worlds with KNX hybrid solution

Seamlessly combine the power of KNX and the convenience of the wireless Wiser solution



Futureproof

As our lives evolve, so do the needs and functions of our rooms. A child's room may transform into a study, and the living room could undergo a complete makeover. However, the placement of switches for lights or blinds may no longer be ideal. With Schneider Electric's Hybrid solution, you have the flexibility to attach Wiser free located switches precisely where they are needed and seamlessly connect them to your KNX system without the hassle of rewiring.

Flexible

Upgrade your smart building with more comfort and peace of mind. Easily incorporate window or door contacts, water leakage or temperature sensors, and attach additional Wiser free located switches in unconventional places.



Experience the best of both worlds with KNX hybrid solution

Seamlessly combine the power of KNX and the convenience of the wireless Wiser solution



Scalable

By incorporating Wiser components, expanding your KNX installation becomes a breeze. Whether it's extending your house or renovating and expanding rooms like the garage or attic, which were previously not connected to KNX, Wiser allows seamless integration.



Efficient

With Hybrid solutions, you can quickly, easily, and cost-effectively enhance functionality exactly where it's needed. Installing Wiser components is quick and straightforward, with configuration directly in Wiser for KNX or spaceLYnk controller.

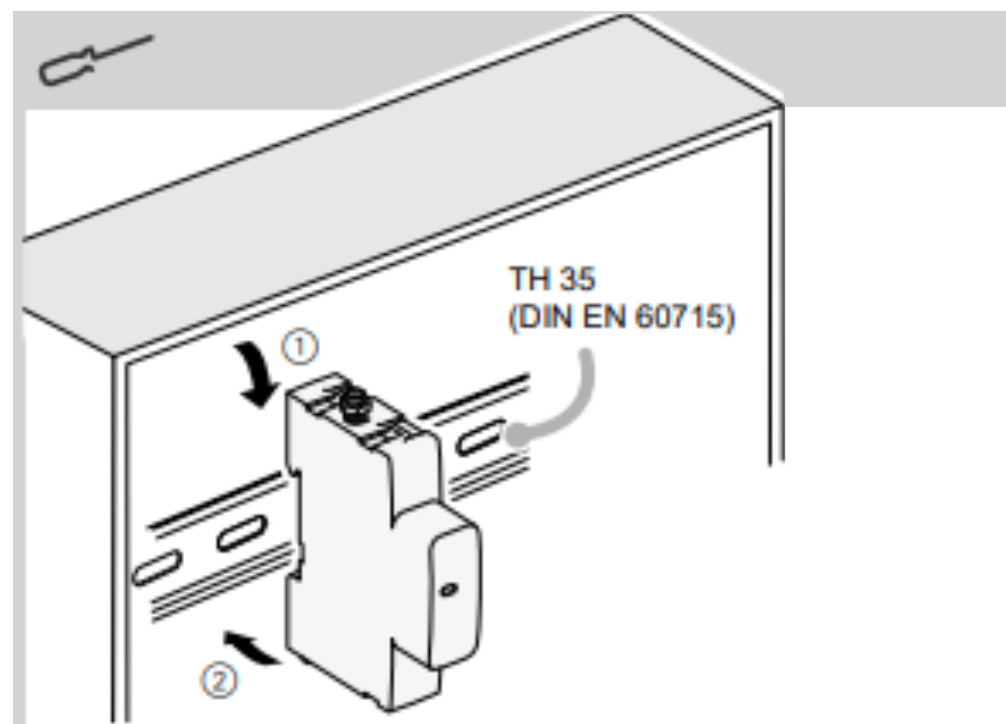


Sustainable

Adding sensors and smart sockets can have a significant impact on your energy consumption. Smart sockets allow you to control devices remotely by using the Wiser KNX app. The app also allows you to schedule on/off times, monitor energy usage, and even receive alerts for abnormal consumption. This level of control helps you minimize standby power, avoid unnecessary energy usage, and identify potential energy-saving opportunities.

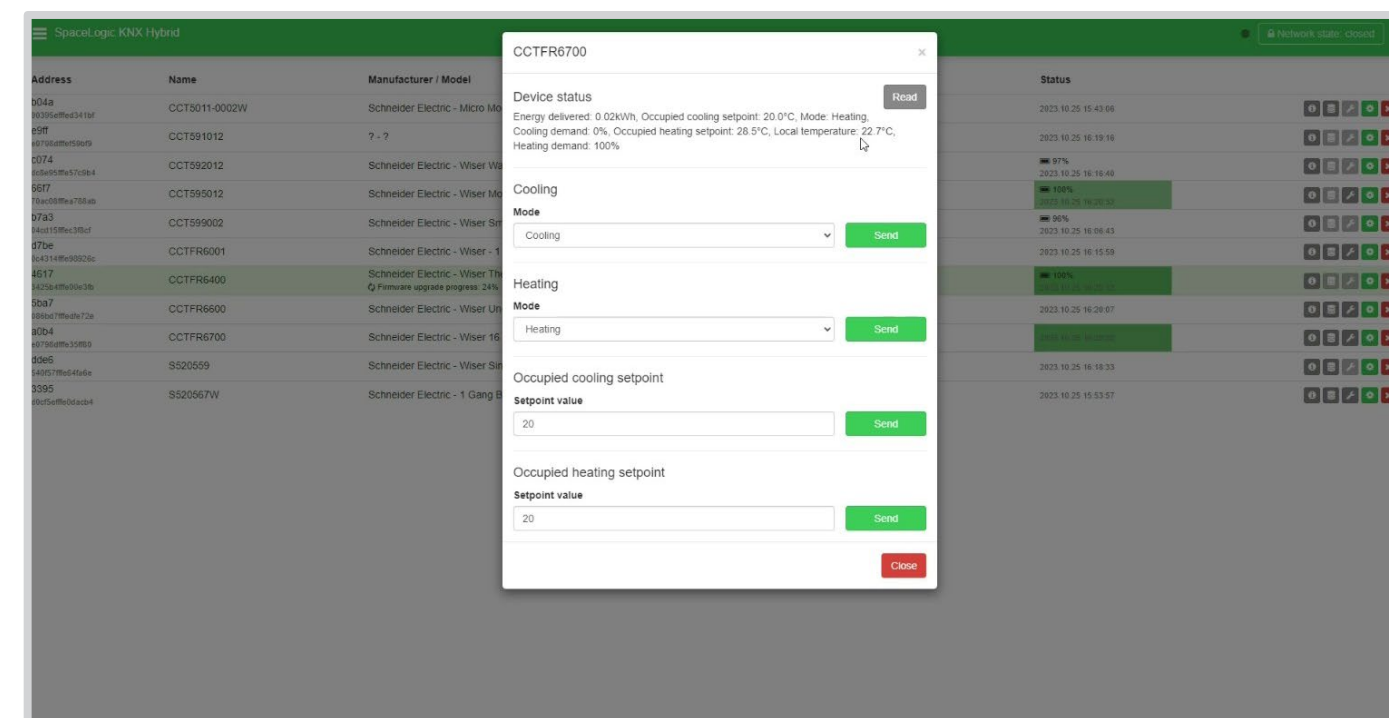


Easy installation



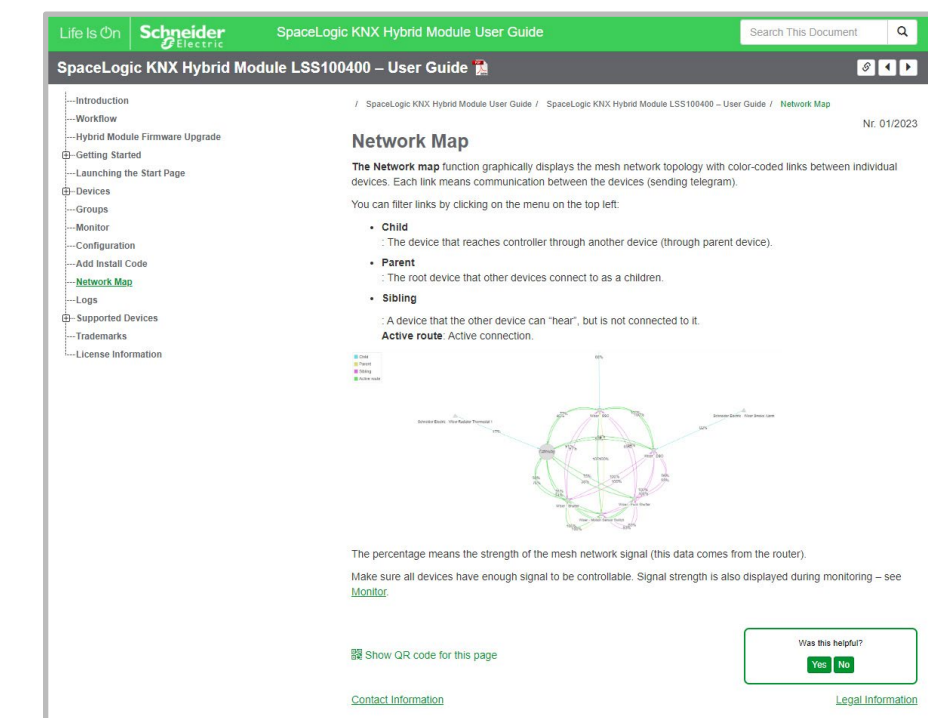
Installation

The KNX Hybrid module is simply installed within the cabinet. Equipped with a dedicated connection cable and an external antenna, strategically positioned outside the cabinet, to ensure the strongest and most reliable connection and signal strength.



Configuration

Configuration is performed through the controller, following an intuitive and structured process. With automatic detection and addition of Zigbee devices, you can test their functionality before configuring them. This allows you to verify their performance right from the start.



Network Visualization

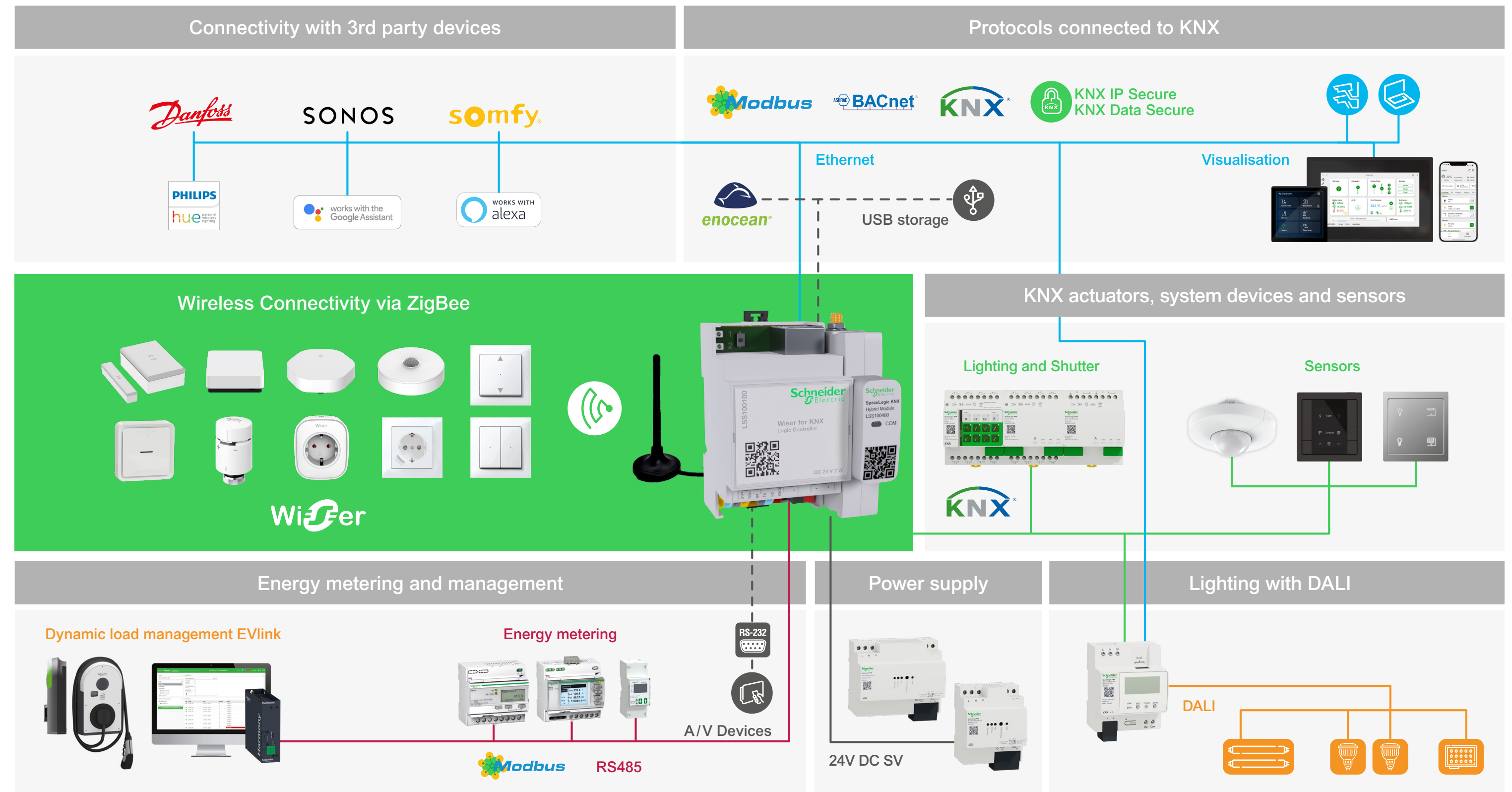
By visualizing the communication flow in the Hybrid application, you can identify potential bottlenecks or areas of improvement, allowing you to optimize your system's performance. Not only that, but the hybrid application also displays the signal strength of your devices. This valuable information helps you ensure optimal device placement and coverage, guaranteeing a robust and reliable network.



SpaceLogic KNX: Connecting Standards and Protocols for Seamless Automation

SpaceLogic KNX allows you to connect various standards and protocols for all your home automation, building automation, and energy consumption measurement needs. With SpaceLogic KNX, you can effortlessly integrate different systems and devices, including the connection to your building management system.

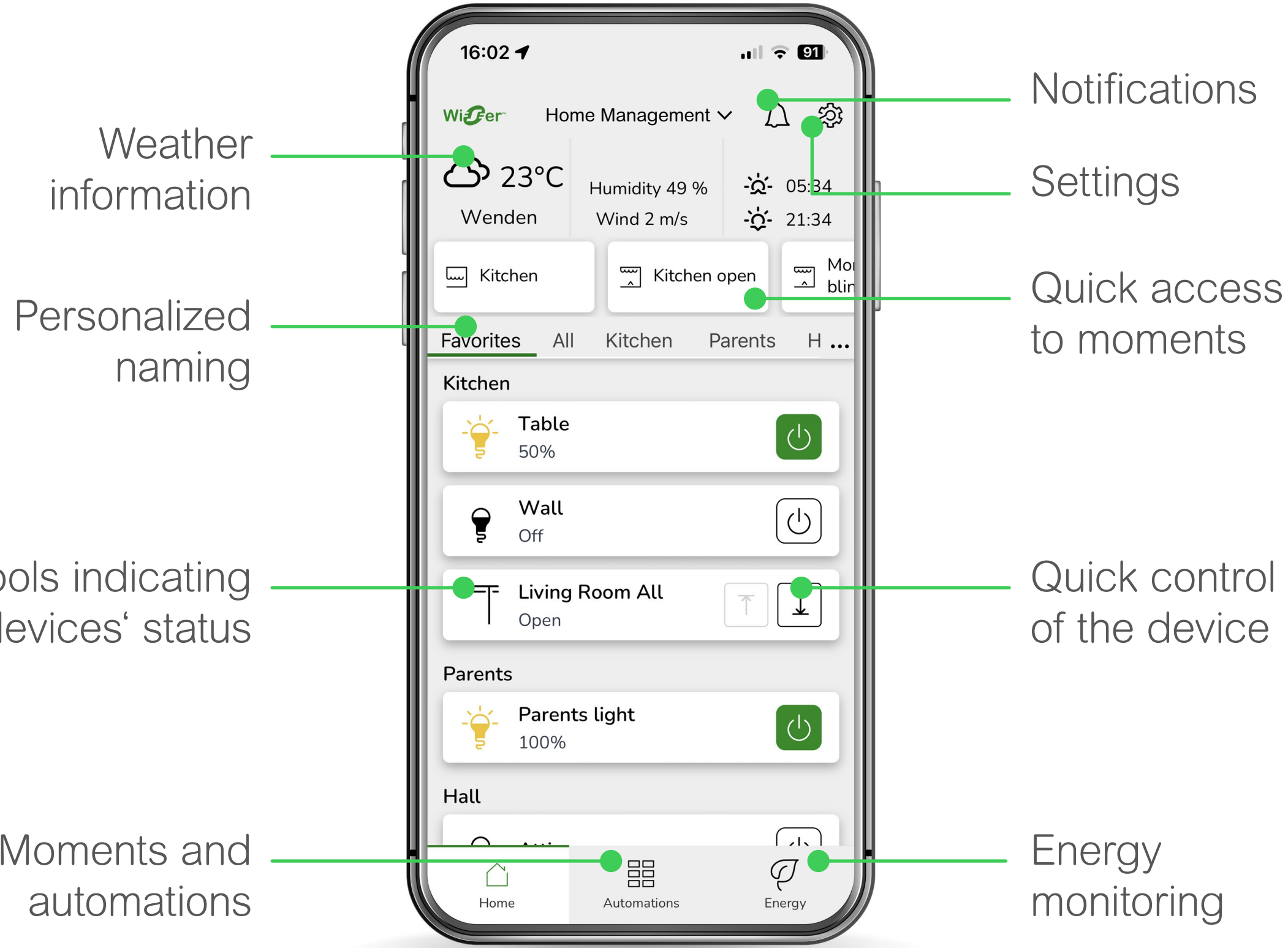
And now, with the introduction of the KNX Hybrid module, SpaceLogic KNX takes it a step further by enabling seamless communication with ZigBee protocol-based products. This means that not only can you connect and control Wiser products, but you can also integrate and interact with other ZigBee-compatible devices.



Unlock the full potential of the Hybrid solution with the Wiser KNX app

With the Wiser KNX app, you can conveniently manage all your KNX functions from the comfort of your smartphone. Whether it's energy management, heating and cooling, safety features, lighting control, or managing shutters, the Wiser KNX app has got you covered.

Thanks to the Hybrid solution, Wiser components are now seamlessly integrated into your KNX system. This means that you can also control and monitor all connected Wiser devices within the Wiser KNX app, simplifying your user experience and providing you with more comfort and peace of mind: Simply integrate Wiser door and window sensors, smoke alarms, and water leakage sensors, and you can receive real-time notifications in the event of any unexpected occurrences, no matter where you are.



Meet Every Need: Discover the Versatile Power of KNX Hybrid Solutions for Homes and Commercial Spaces



Homes



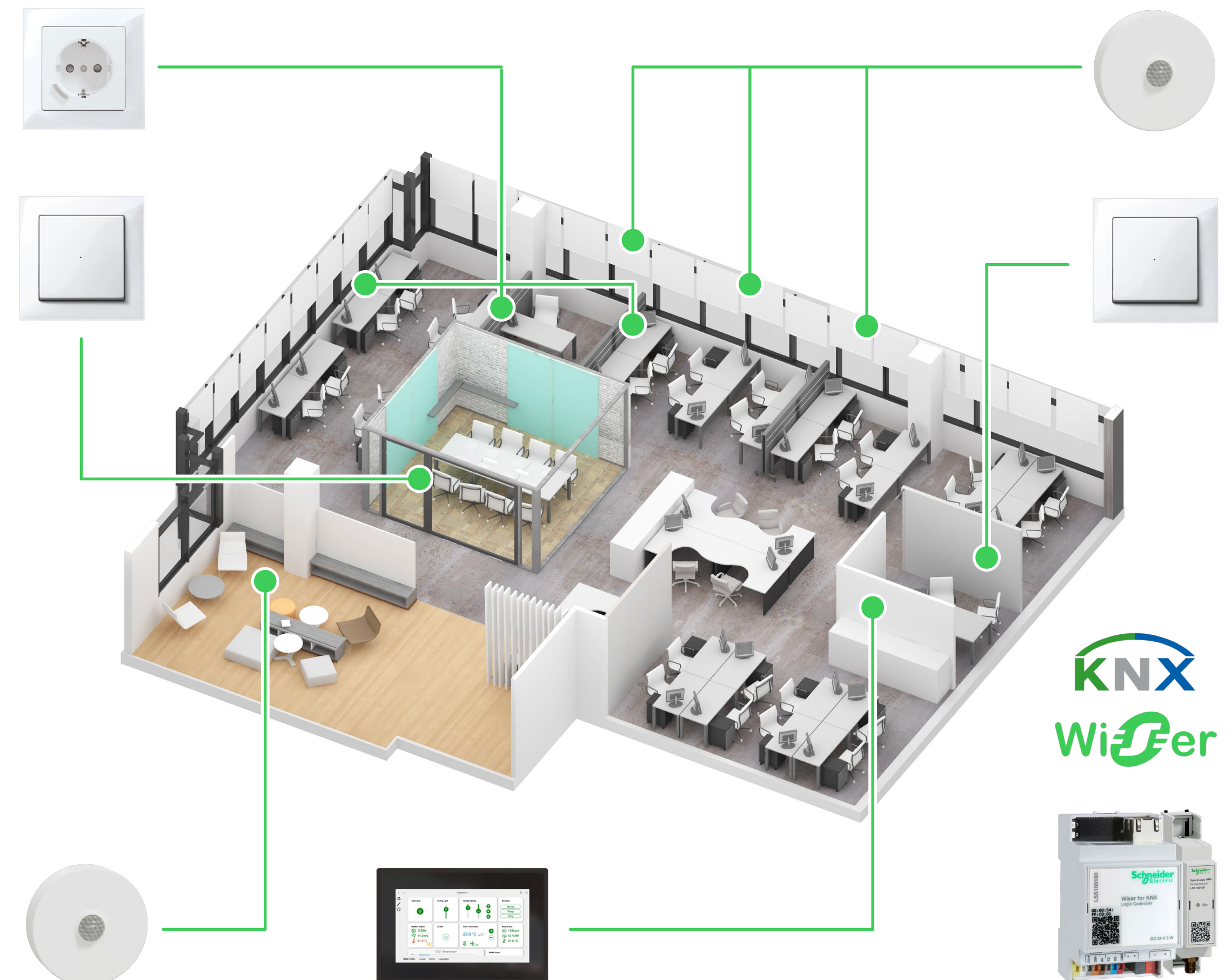
Commercial



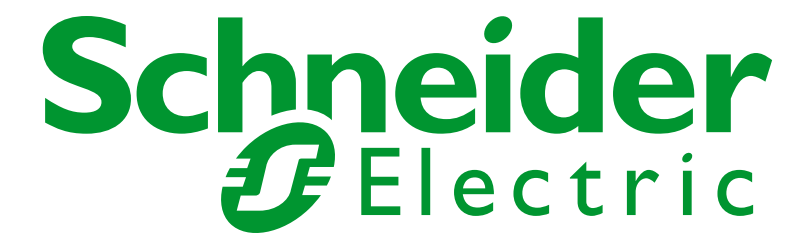
Upgrade your commercial space with Hybrid

In a commercial setting, the smooth integration of Schneider Electric's Wiser wireless devices offers convenient extension and customization options for your existing KNX installation across various domains like lighting, shutter, heating or energy management:

- Enhance energy efficiency by adding wireless motion sensors in rooms or open spaces. These sensors detect absence and automatically switch off lights, reducing energy consumption.
- Optimize energy usage in specific areas like the copying room by using Wiser Connected Sockets. Devices can be set to automatically switch off after work, reducing unnecessary power consumption.
- Improve user comfort and convenience by installing Wiser Free Located switches on all desks. This allows easy control of lights and blinds without the need to physically get up and walk to the door.



Life Is On



To learn more information about the
Schneider Electric **KNX Hybrid** visit

se.com



Schneider Electric

35 rue Joseph Monier
92500 Rueil-Malmaison, France
Tel : +33 (0)1 41 29 70 00

