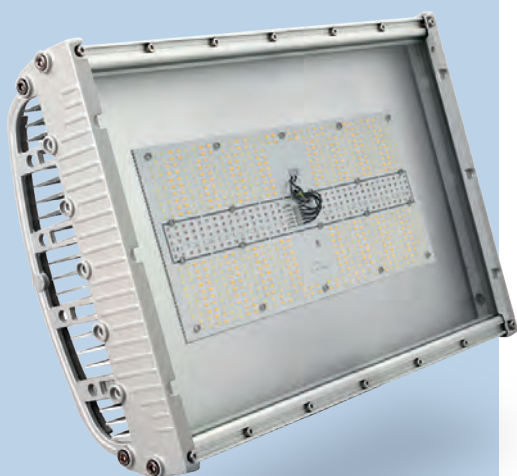




ECO *grow*

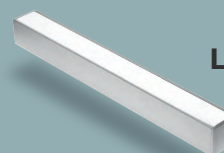


- **Designed for indoor industrial farming.**
- **Up to 2.2g of flower/W!** Verified and proven in real field installations.
- **Designed for maximal power, efficiency and return of cost.**
- **Efficacy over 2.93 $\mu\text{mol/J}$** (based on 90% LOR and 1,000 W power consumption).
- **Four separately controlled channels** - Royal Blue, Photo Red, Far Red, White.
- **Passive cooling up to 1,240 W @Ta = 30°C.**
- **Overheating protection to prevent LEDs from lifetime shortening and critical damage.**
- **Designed to allow parts refurbishment after luminaire lifetime exceeded, in case of part failure or technology upgrade** (LEDs, drivers, control gear).
- **Independent power supplies for each channel.**
- **Supplied with Mean Well drivers and TECO or Loxone control gear.**
- **Professional industrial design.**
- **Management plan.**
- **Controls and monitors** - light in all four channels, CO₂, Water pH, temperature, air convection.
- **Possible technology and know-how franchising including all supplies** - substrate, seedlings from clones, fertilizers, growing plan, training, buy out of production.

RELATED *grow*
SERIES PRODUCTS



OFFICE
grow



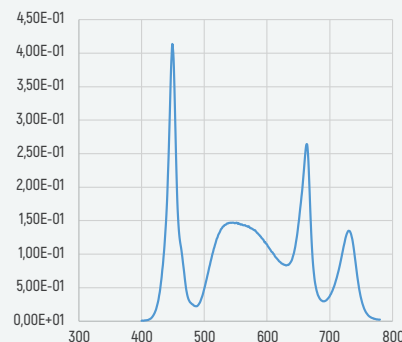
LINEAR
grow



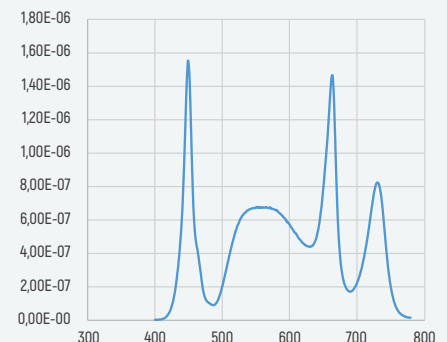
LINEAR *grow*

- Designed for indoor vertical farming.
- Customizable lengths from 0.5m – 3.0m in multiples of 0.5m.
- Mid power LED technology.
- Up to 70 W/m.
- Efficacy over 2.38 $\mu\text{mol/J}$ (based on 90% LOR and 70 W power consumption).
- Separate white and red channel.
- Customizable light spectrum.
- High red content (660nm + 730nm).
- Light quality fits wide range of plants (decorative, crops, vegetables, technical...).
- Comes with Mean Well drivers.
- On demand 1 in 3 or DALI dimming.

Spectral power distribution [W/nm]
(white + red channel 100%)*



Spectral photon flux distribution [$\mu\text{mol/s/nm}$]
(white + red channel 100%)*

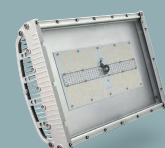


* Spectrum example. Content can be customized.

RELATED *grow*
SERIES PRODUCTS



OFFICE
grow



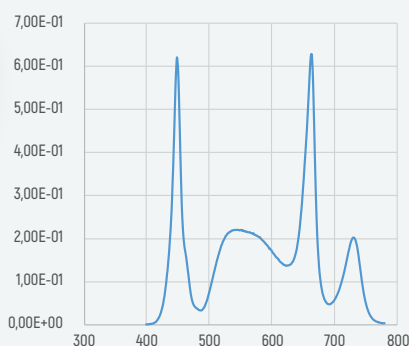
ECO
grow



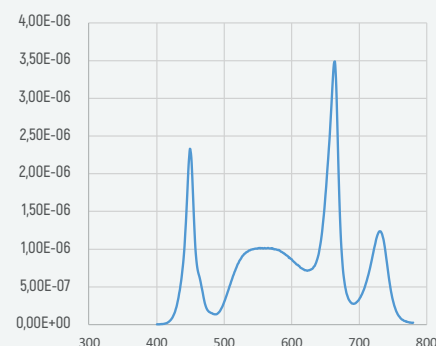
OFFICE *grow*

- Designed to bring high quality grow light to your office all year round.
- Fits 600x600mm or 625x625mm office ceiling standard.
- Provides necessary light in places where plants do not get enough natural sunlight (meeting rooms, reception desks, cafeteria...).
- Mid power LED technology.
- Up to 115 W/luminaire.
- Efficacy over 2.2 $\mu\text{mol/J}$ (based on 85% LOR and 115 W power consumption).
- Separate white and red channel.
- White CRI and CCT customizable.
- High red content (660nm + 730nm).
- Light quality fits wide range of plants (decorative, crops, vegetables, technical...).
- Comes with Mean Well drivers.
- On demand 1 in 3 or DALI dimming.
- On demand IR or radio dimmer.
- Suitable for industrial farming with light array **technology** - seamless light ceilings creating highly homogenous lighting environment

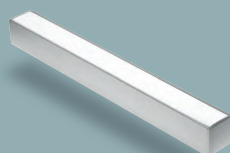
Spectral power distribution [W/nm]
(white + red channel 100%)



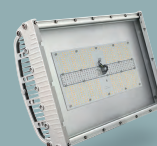
Spectral photon flux distribution [$\mu\text{mol/s/nm}$]
(white + red channel 100%)



RELATED *grow*
SERIES PRODUCTS



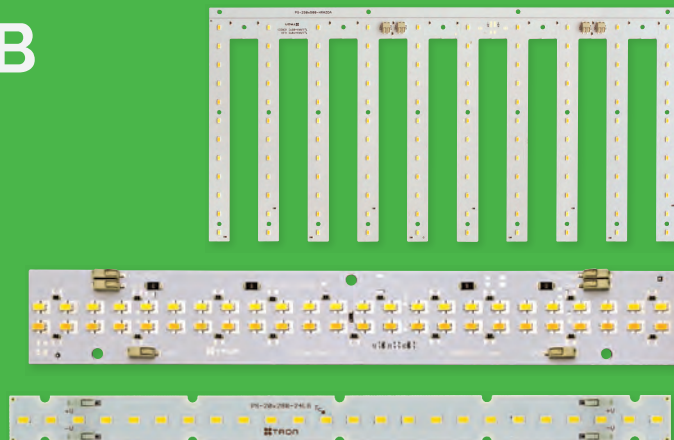
LINEAR
grow



ECO
grow

Can't Decide? Custom PCB Design & Production!

- » Comprehensive consulting, design and engineering services
- » Procurement of components
- » In-house automatic and manual production capabilities
- » Rigorous measuring and quality control



OUR TRUSTED PARTNERS



official distributor
and solution provider



official distributor



official distributor

SAMSUNG

WAGO

LUMILEDS

NICHIA

cardo

LEDIL

NANOPTIQS

LEDIA



WATCH A VIDEO
PRESENTATION

YOUR CZECH MATE IN LED LIGHTING

- » Largest OEM partner for LED PCB production in Czechia and Slovakia
- » 27+ years of experience
- » 60+ qualified employees
- » Worldwide customer base
- » ISO 9001, ISO 14001 and ISO 45001 certified
- » Development of customer defined LED lighting solutions
- » 3 state of the art SMT lines with combined performance of 2 mil. components/day
- » In-house R&D center with optical, electrical and environmental laboratories
- » Distribution of components, consulting, technical support



Let's work together!

+420 541 420 720 | info@tron.cz
www.tron.cz



TRON ELEKTRONICKÉ SOUČÁSTKY, s. r. o.
Karásek 1 J, 621 00 Brno-Řečkovice, Czech Republic