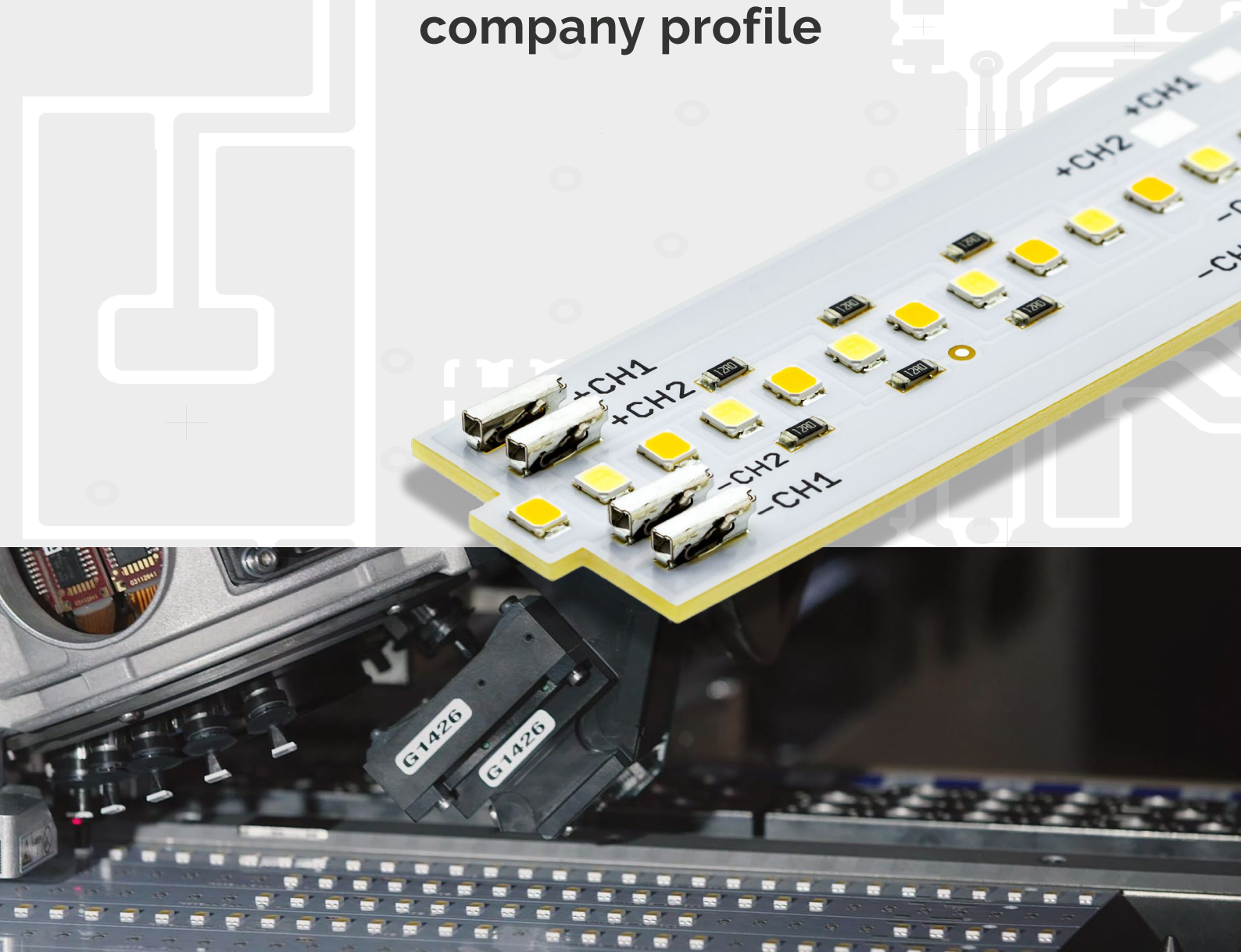




TRON

Your Czech mate in LED lighting

company profile





ABOUT US

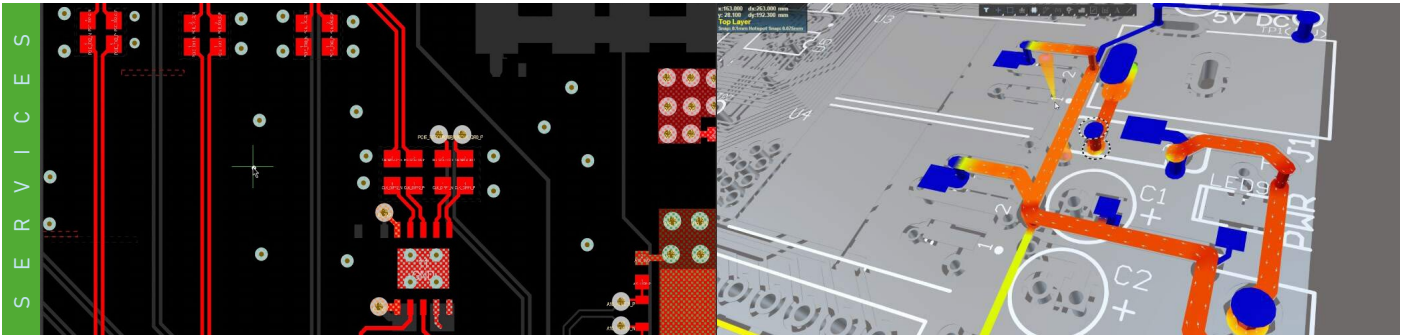
- ✓ The largest OEM partner for LED PCB production in the Czech Republic and Slovakia
- ✓ Established in 1997
- ✓ Worldwide experience with over 1000 customers from different segments ranging from automotive, industrial and street lighting to horticulture
- ✓ Headquarters based in Brno, Czech Republic with over 1 hectare of land and 3500 m² of floor space
- ✓ Completion of new 1000m² warehouse in 2022 devoted to storage of aluminium profiles, mechanical production and manual assembly
- ✓ ISO 9001, ISO 14001 and ISO 45001 certified
- ✓ Over 60 qualified employees
- ✓ Annual turnover of 8 000 000 € (2022)

WATCH A VIDEO
PRESENTATION



ISO 9001
ISO 14001
ISO 45001

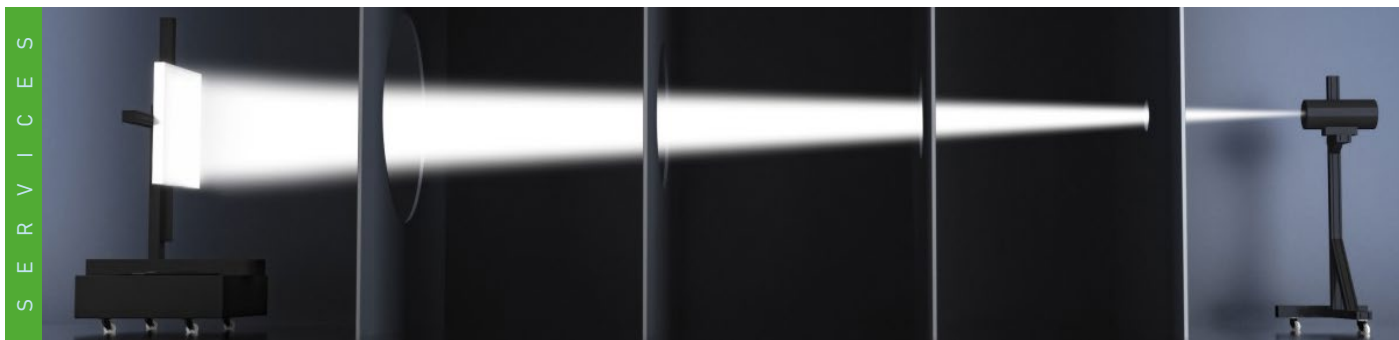
INTEGRATED
MANAGEMENT



DEVELOPMENT OF CUSTOMER-BASED SOLUTIONS

- ✓ PCB design and optimisation according to customer's needs in Altium Designer SW
- ✓ Development of new and redesign of existing technical solutions according to latest technology advancements
- ✓ Design work conducted in relation to existing norms and regulations
- ✓ Advanced technical support
- ✓ In-house or external electrical, optical and environmental testing
- ✓ Cooperation with national and other certified laboratories for complete testing incl. EMC, IP, IK...
- ✓ Possibility of obtaining ENEC, CB or UL accreditations





OPTICAL LABORATORY

- ✓ Free of charge measurements for our customers
- ✓ Measuring during development stage and measuring of the final product
- ✓ Integrating Sphere with 200 cm diameter
- ✓ Spectroradiometer (spectrum, CRI, parameters R2-R16, luminous flux, efficacy...)
- ✓ Photogoniometer (luminosity graphs, LDT data, UGR...)
- ✓ Spectrometer – UPRtek for fast analysis



ELECTRICAL AND ENVIRONMENTAL LABORATORY

- ✓ Hi-pot tester and Insulation resistance meter for electrical safety evaluation
- ✓ Digital oscilloscope for voltage signal analysis
- ✓ Keithley 2400 lab source for precise, low-noise readings and other equipment for internal electrical tests
- ✓ Accelerated environmental simulation and climate resistance testing (temperature, humidity) with BINDER MKF240 climate chamber
- ✓ Thermal camera for thermal optimisation during product development
- ✓ 4-channel recording thermometer for heat management testing





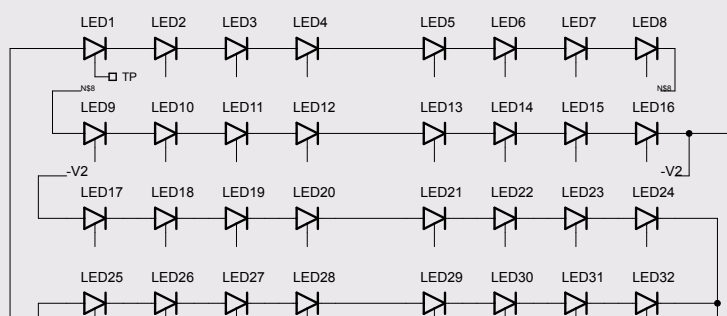
ASSEMBLY - PRODUCTION

- ✓ 3x independent SMT lines optimized for maximum efficiency (ASM E by Siplace)
- ✓ Combined performance up to 120,000 components/hour
- ✓ Max PCB dimensions: 1400 mm x 460 mm
- ✓ 2x SPI to ensure the highest quality (Koh Young 8030-2 3D, size XL and 2XL)
- ✓ 2x laser marking units for traceability of produced modules (ASYS)
- ✓ 3D AOI for enhanced quality control (Koh Young Zenith)
- ✓ Quality control on every line during production
- ✓ Output optical inspection station with INSPEX microscope meeting automotive industry standards
- ✓ Traceability on request
- ✓ Cutting-edge ScienScope component counting system
- ✓ THT and manual assembly line with qualified staff for final assembly and preparation of semi-finished products

ASM
Assembly Systems

**KOH
YOUNG
TECHNOLOGY**

AOI



+V1/-V1: 24 LED
+V2/-V2: 16 LED
+V3/-V3: 8 LED

TESTOVÁNÍ

TECHNICAL SUPPORT

- ✓ Technical and bussiness assistance available during development and production stage
- ✓ Assistance with components selection and sourcing
- ✓ Assistance with simulation and estimation of lighting parameters
- ✓ Tailored spectral solutions for non-white applications



SUPPLY AND SALE OF COMPONENTS

- ✓ LEDs, switching power supplies, LED strips, accessories, optics, controllers, connectors...
- ✓ Aluminium profiles for linear lighting, widest selection on the market: Topmet, Klus, TRON
- ✓ Experienced specialists will help you select the right components for your application
- ✓ Wide selection of products ranging from economical to high-end types



official distributor
and solution provider



official
distributor



TOPMET® official
distributor



WE WORK FOR

- ✓ We earned trust of our partners by offering the highest quality products and comprehensive technical support. Our customers come from following segments:
- ✓ Automotive (Hella, Rolls Royce)
- ✓ Horticulture
- ✓ ATEX
- ✓ Street lighting
- ✓ Commercial and residential lighting

27+ years of EXPERIENCE

OUR TRUSTED PARTNERS:



YOUR CZECH MATE IN LED LIGHTING

TRON ELEKTRONICKÉ SOUČÁSTKY, s. r. o.
Karásek 1 J, 621 00 Brno-Řečkovice, Czech Republic
+420 541 420 720 | info@tron.cz | www.tron.cz

www.tron.cz