

February 2024 issue | Light + Building 2024

# Blick

## Service

We're by your side in every phase of your project

## Industry sectors

Focus on the future: Learn how we provide the right solutions

## Products

Our product highlights and the very latest innovations



# light+building

## Innovative strength meets future challenges

You may be wondering why the CFO of a family-run company such as OBO is writing an editorial for Light + Building. Well, the OBO team is here once again to provide yet more proof of our innovative strength, our entrepreneurial commitment, the tireless efforts of our employees and the success we have achieved as a result. We listen to our customers and endeavour to offer the best possible solution for almost every challenge at any installation site.

However, there are also issues in my area of responsibility for which we cannot offer you, our customers, solutions and which affect us just as much as they do you. In order to master these together, we need a rethink at state, federal and, above all, European level. Companies in the EU could then benefit from an improved regulatory framework, simplified business processes and increased digitalisation. In this context, it seems all the more important to us in management to actively approach politicians, call for bold solutions and also to listen to companies. We believe this is the only way that companies like ours can continue to present the most innovative products and services worldwide in the future.

Come and see our innovations for yourself at Light + Building. These are some of the topics you can look forward to:

### Step inside: **Industry sector solutions** with future potential

We have set up three different rooms at the OBO stand, where you have the opportunity to discover, experience and touch our OBO solutions for different types of buildings as realistically as possible. We'll show you an old building renovation, a modern office and a laboratory. A detour to our PV corner is also worthwhile as our portfolio of photovoltaic systems is full of exciting developments.

### **Sustainability:** Shaping the future together

Our mission for the coming years is to shape the electrical infrastructure of the future, and a very important component of this is sustainability. Together with our employees, customers and partners, we continue to develop the globally networked world. We will be delighted to show you more in our dedicated sustainability corner.

### **Service@OBO:** There for you in every phase of your project

Something that characterises OBO is our distinctive service mentality. Under the motto "Service@OBO", we present you with a summarised overview of how we can support you in each project phase. From the initial consultation, to implementation, right through to the after-sales stage. OBO really is always at your service!



### **See you there!**

Hall 12.1, Stands D90, E90, E91

“I would be delighted if this preview of our trade fair appearance made you curious, and would like to invite you to visit us at Light + Building 2024. Until then, I hope you enjoy reading our special edition of OBO Blick and look forward to meeting you in person in Hall 12.1, Stands D90, E90, E91.”

Prof. Dr Robert Gröning  
CFO OBO Bettermann Group





# The OBO trade fair stand

**Lightning and surge protection / EX (TBS)**

**Industry sector solutions for commercial and residential building construction**

More information from page 16

**Industry sector solutions for data centres**

More information from page 18

**Fire protection product area (BSS)**

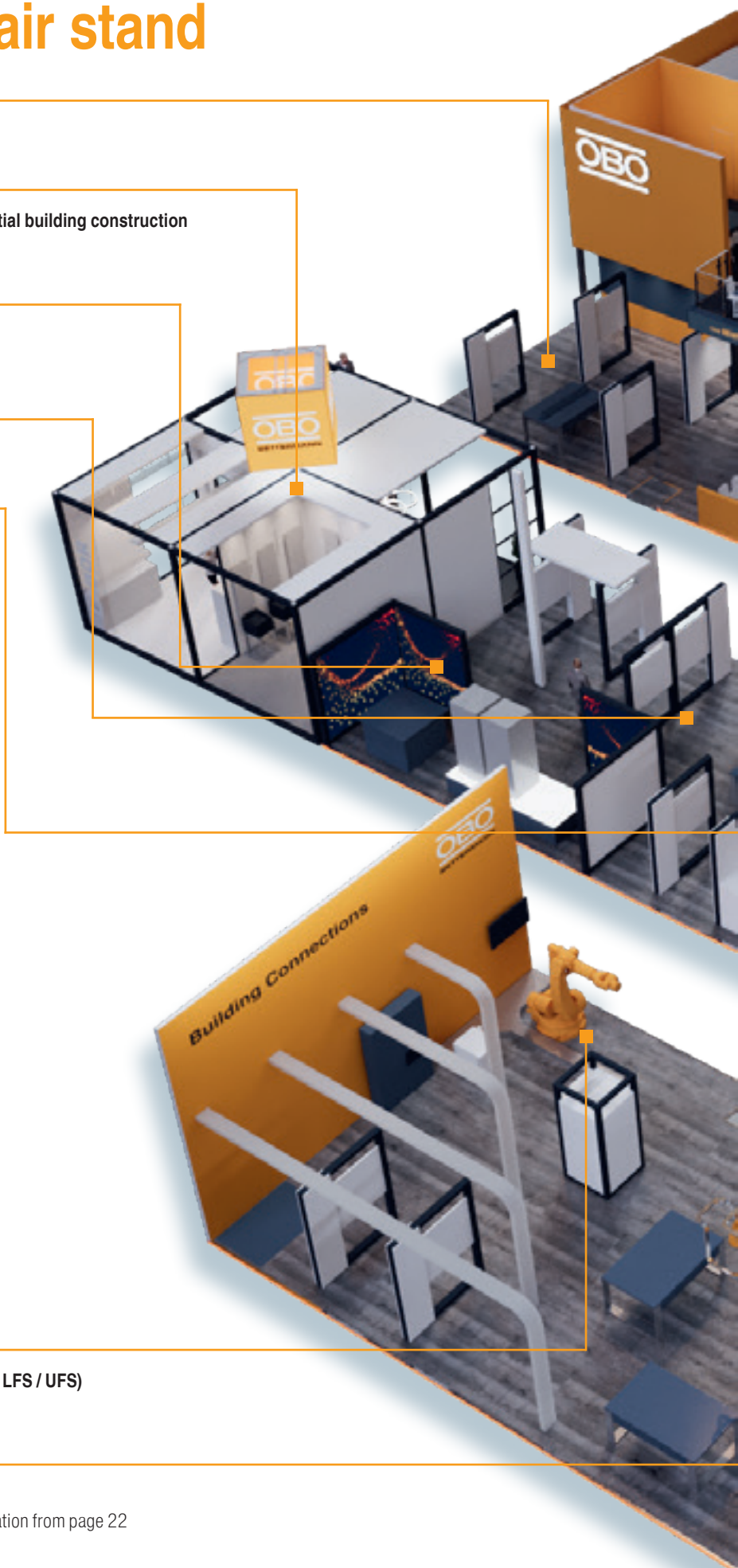
**Industry sector solutions for photovoltaics**

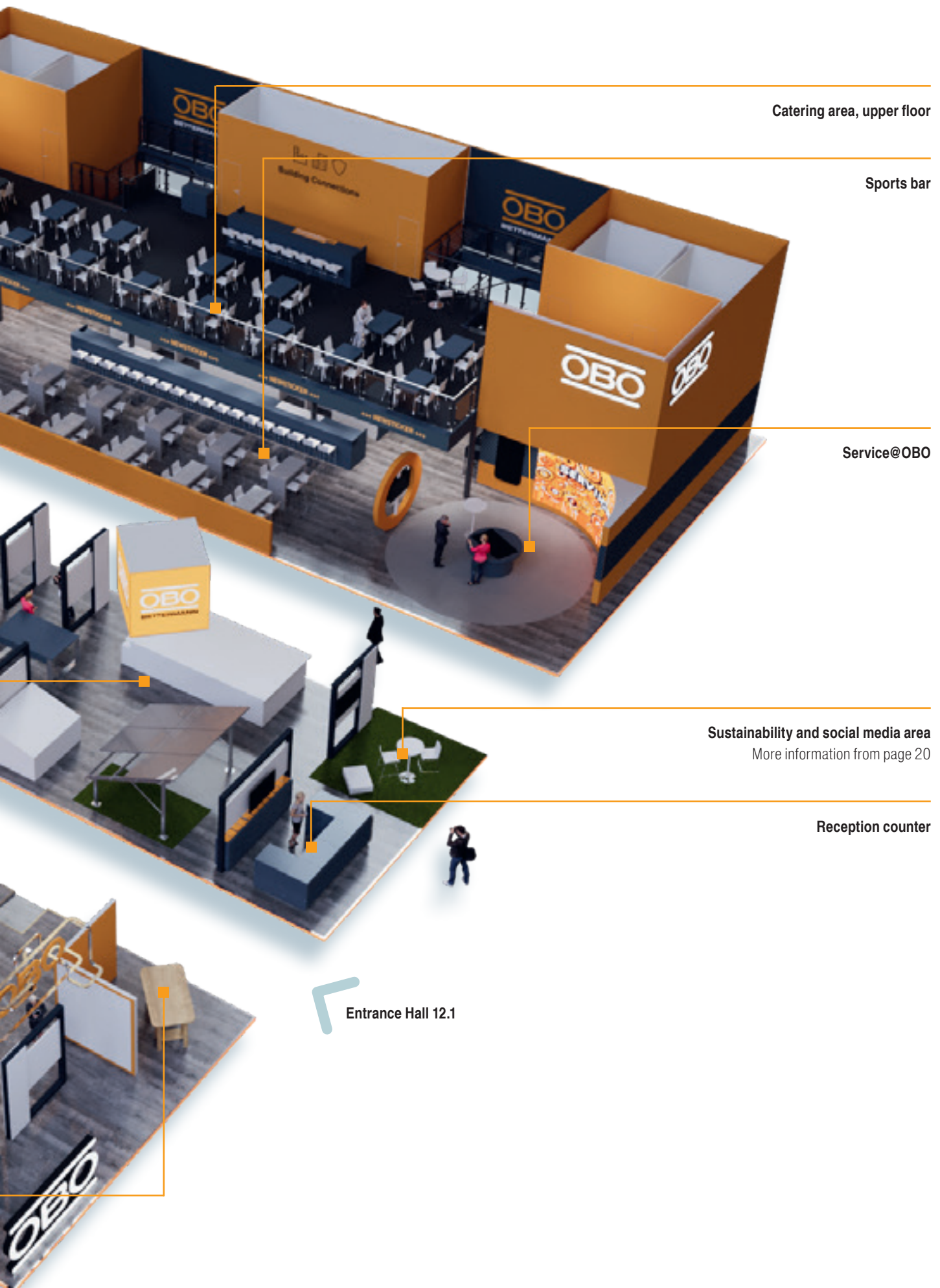
More information from page 13

**Industrial & Building installations product area (KTS / LFS / UFS)**

**Industrial installations product area (VBS / KTS)**

Including a competition on fast installation – more information from page 22







## Closing the circle: Service@OBO

We don't just support you and your projects with innovative product solutions, we also have a comprehensive service offering. Our mission is to be "at your service". From the initial enquiry, through to the construction phase and on to the after-sales service – we accompany you in every phase of your project. At the OBO trade fair stand, you can discover in detail which service you can benefit from in each phase of your individual project.

Here we give you an overview.

### Information

We will keep you up to date:

- Know-how
- myOBO app
- OBO Academy
- Certifications
- International customer support

### Consultation

We'll gladly help – in every place and every phase of planning and executing your project.

- OBO Construct
- BIM@OBO
- International project coordination
- Planning support

### Offers

We will set your project on the right track from the very start.

- International bid coordination
- Local competences
- Invitations to tender

### Construction phase

We're on your side when the work really begins.

- International construction support
- Special solutions
- Logistics

### After-sales

We look after your interests – before, during and afterwards.

- Project review
- Product guarantees
- Complaints
- Customer references





## OBO Academy – advantage through knowledge

The OBO Academy supports you with various training formats – digital or analogue, at our OBO locations or on-site at your premises. We share our expert knowledge about the OBO portfolio with you and give you a real head start.

- Face-to-face events at your premises, run by our sales team, or at the OBO Academy training campus in Menden (Germany) or in Bugyi (Hungary)
- Planner days – for experts, by experts, in your region
- Online seminars
- Tailored consulting – training your staff or clients on-site
- Certification – to comply with E-Mark certification or special fire protection qualifications, or to obtain credits from local chambers of trade
- Worldwide training courses on request





## BIM@OBO – visions become a reality

Welcome to the future: With BIM@OBO we are offering the first solution that uses the full potential of Building Information Modelling. The advantages for you are more efficiency, greater transparency and increased cost security with complex projects.

- Autodesk Revit plug-in for the direct download of systems into Revit
- Comprehensive product system ranges for less planning work
- Intuitive modelling through automatically and manually placeable fittings
- BIM library with all fittings for direct download into different formats
- Up-to-date and compact digital data, also in IFC format





Discover for yourself how BIM@OBO can support you and your projects at our planning terminal at Light + Building. Our OBO experts will answer your questions about BIM@OBO and will also be happy to advise you personally.

Of course, the planning terminal would not be complete without the opportunity to discover our other digital service tools: OBO Construct and the myOBO app.

### **OBO Construct:**

Planning has never been so easy. Regardless of where you are and what time of the day it is, OBO Construct supports you in planning and developing your electrical installations.

- Transfer planning requirements into complete projects
- Find suitable products quickly and easily
- Download configuration results as an Excel, Word or Image document

### **myOBO app:**

With our mobile app for electrical installations, you always have the OBO product catalogues to hand – be it online or offline.

- Extensive and relevant information around the more than 30,000 OBO articles can be downloaded, as well as load-bearing diagrams, 3D data or tender texts
- Set up, edit and export your projects
- Scan OBO products and order them directly from the wholesaler

Find out more  
at our planning  
terminal





## Local **competence**

We are always close to you – worldwide. With 40 subsidiaries in over 60 countries, we are represented on all continents. For you, this means that you always have a local contact who speaks the local language and is familiar with the regional project requirements and standards.

- Regional proximity, worldwide presence
- Personal contacts for quotation questions in the respective national language
- Local consideration of country-specific conditions
- Support in the preparation of technical quotations as well as in quotation negotiations and the awarding of contracts
- Timely preparation of quotations with direct delivery date visibility
- Preparation of quotations for international projects
- Direct link to the technical data sheet of each quotation item





## International construction support

During the construction phase, your project moves from the planning stage to the concrete realisation. And OBO is always by your side. Whether it's a site inspection or customer and site visits – you can count on us. Of course, this applies to both national and international projects.

- On-site support during the execution phase
- Constantly represented with project managers on major construction sites
- International project support by Global Accounts in conjunction with the respective national company and representative
- Construction site inspection including on-site consultation on national and international construction sites
- Construction site and customer visits by our OBO sales representatives

### Come with us to the construction site: OBO products in use

Do you already know our video series *OBO auf der Baustelle* ("OBO on the construction site")? The series takes you to construction sites all over Germany – from the Schule am Meer school in Büsum to the construction of a new medical centre in Obernkirchen and the Wuppertal suspension railway. Together with the OBO field service, we visited various partner companies and asked them which challenges can be mastered particularly well with OBO products. Accompany us on our journey to the construction sites and look over the shoulders of installers and tradespeople as they install our products.



To the YouTube series "*OBO auf der Baustelle*"



### OBO on the construction site: Would you like to be there too?

Do you perhaps have an exciting project yourself in which our OBO products are used? Then please get in touch with us and become a part of "OBO auf der Baustelle". [info@obo.de](mailto:info@obo.de)





## Customer reference projects: We share your success!

Your project is complete and you have every right to be proud of it. Time to let others know about your success. We will also support you in this and will be happy to include your project in our OBO media channels or help you to prepare it for other target group-specific channels. You will always have a permanent, regional OBO contact person at your side as a direct contact.

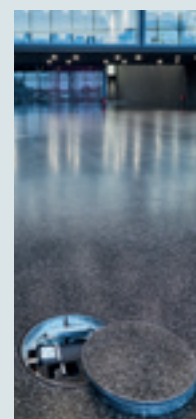
- Featuring customer reference projects on the OBO media channels
- On request, we can prepare the reference project for other media channels, such as for planners and architects
- Support for presenting projects on customer channels
- Provision of text and image material for customer references
- Direct contact through a permanent regional contact person

**Good to know:** Our photo also shows a special reference project in which our OBO products were installed. The Futurium in Berlin relied on under-floor systems from OBO for the “House of the Future”.

Between the Charité hospital and the Chancellery, in the heart of Berlin's government district stands the Futurium, the “House of the Future”. The glass façade reflects the sky and the building looks like a cloud in the turbulent hustle and bustle of the city. However, it is not only the exterior of the Futurium that is impressive, but also the interior, where underfloor systems from OBO ensure a flexible power supply.

The OBO products impressed with their combination of functionality and aesthetic solutions for sophisticated room architecture and design. A mastic asphalt terrazzo floor was laid in the lower and upper areas, with a cement-bound screed underlay in the middle. Special solutions from OBO were used in all areas.

The architects Christoph Richter and Jan Musikowski were impressed by the perfect harmony of the OBO solutions with the various terrazzo floors.





## Discover the **future of PV planning:** with **OBO Construct**

OBO offers you a reliable system solution for PV systems. Our OBO Construct tool for planning PV mounting systems according to individual specifications and requirements rounds off the complete solution. OBO Construct is our popular product configurator, which is now used by over 20,000 users. With a total of six different tools, it supports the planning and project planning of electrical installations, and the individual tools form a central platform that can be accessed at any time, from any location and from any end device. OBO Construct is continuously updated and expanded in order to offer users the best possible support, which is now the case with the planning tool for PV mounting systems.

The planning tool impresses with its intuitive, clear operability and short planning processes. Step by step, users can find the right OBO PV mounting system for pitched-roof, flat-roof and free-standing systems. The tool automatically calculates the required quantity of the respective components and generates a planning-based substructure and PV-module layout. This can be easily downloaded in various file formats, as can tender texts and various documents for the static calculation of the mounting structure. Thanks to the ELBRIDGE interface, OBO Construct is directly linked to the online shops of electrical wholesalers. This not only guarantees simple and smart planning, but also a seamless customer experience.

### Versions currently available:



**Cable assignment**  
(Web app for all devices)



**Fire insulation**  
(Web app for all devices)



**PV configurator**  
(Web application)



**Underfloor systems**  
(Web app for all devices)



**Surge protection**  
(Web app for all devices)



**Earthing systems**  
(Web app for all devices)



**Cable support systems**  
(AutoCAD plug-in)

Available on the iPhone  
**App Store**

ANDROID APP ON  
**Google play**

**obo-construct.com**





# Solar – so good:

## Comprehensive expertise for photovoltaic systems



For the safety of your PV system, we offer a complete system that fulfils almost all electrotechnical requirements – from lightning and surge protection, earthing and equipotential bonding through to cable and line routing. Our portfolio for all-round protected photovoltaic systems is now complemented by pioneering and innovative mounting systems for pitched-roof, flat-roof and free-standing set-ups: The Magic PV solution.

## The benefits of the Magic PV solution at a glance:

- **Less work:**  
A slim overall portfolio offers a simplified product selection and reduces warehouse storage to a minimum.
- **More flexibility:**  
Countless customer-specific solutions and structural implementation options can be achieved.
- **More security:**  
Correct installation of all standard PV module dimensions is very simple.
- **Versatile:**  
The Magic PV solution can be adapted to different installation conditions with ease.



## Mounting systems for pitched roofs

The most popular and most common type of PV system in Germany is the pitched-roof system, which is mounted on an existing roof. The Magic PV solution for pitched-roof systems can be installed without screws or tools thanks to the Magic technology. This saves time. The system's roof hook solution offers flexibility. Not only can it be mounted on all standard pitched-roof types, but it can also be adjusted in all directions at any time with millimetre precision. The system's universal clamp also functions as a connection or end clamp and covers a clamping range of 30–50 mm. All commercially available PV modules can thus be fixed without any problems.



### Particularly practical:

The products for flat- and pitched-roof systems can be combined.



## Mounting systems for flat roofs

Just like the system for pitched roofs, the Magic PV solution for flat roofs features Magic technology for screwless and tool-free installation as well as the universal clamp for the uncomplicated fixing of all standard PV modules on the market. In addition, the UniBase ballast system provides variable weighting of the entire system with the help of rectangular paving stones – even after the installation. The UniBase system can be combined with other products from the OBO portfolio as required, for example with the adapter for mesh cable trays type 165 MBG HGRM.

## Mounting systems for free-standing set-ups

The Magic PV solution for free-standing PV systems offers maximum flexibility, as it is available in both pile-driven and anchored versions. The system components, some of which are pre-assembled at the factory, minimise installation time and costs. Thanks to mounting profiles that are flexible in terms of length and perforation, the systems can be installed in almost any way – not only with the OBO clamps provided for this purpose, but also using conventional fastening materials such as standard screws.





# Reliable **electrical installations** for any **type of building**

## Our solutions for **commercial and residential building construction**

Whether residential buildings, hotels and restaurants, sports facilities and shopping centres or medical centres and hospitals, all buildings have one thing in common: Electrical installations run through them like a network. Following the path of the current, suitable measures must be taken to protect electrical devices and ensure the safety of people in the building. OBO offers many years of expertise and an extensive portfolio for safe electrical installations in every building type.

You can see this for yourself at Light + Building: We have set up three different rooms for you and invite you to discover our solutions for different types of buildings interactively. Step into a modern office, an old building with brick walls or a bright laboratory. In each of these rooms, we have integrated our OBO products as realistically as possible into the various installation environments. You can see, touch and experience them. See for yourself where OBO products can be used both stylishly and functionally.

### These are the advantages that we offer with our complete systems offers:

- Many years of expertise and experience from projects worldwide
- Comprehensive solutions from a single source
- Quick and uncomplicated installation
- Secure installation and comprehensive protection even in the event of fire





## EXISTING BUILDINGS

The old building, with brick walls and surface-mounted installations that complement them, invites you to discover our solutions for construction work in existing buildings. Underfloor systems and service poles ensure the supply of power and data precisely. Cable trays and cable ducts and trunking lead cables and lines safely and aesthetically to where they are required.

## LABORATORIES

Laboratories pose very special requirements on electrical installations. We accept this challenge – and our examples allow you to see and experience our solutions for yourself. These include our stainless steel products, which stand for hygiene and quality. They are corrosion-resistant and rust-free and are particularly suited to installation environments with high demands on hygiene, such as laboratories or the foodstuff and pharmaceutical sectors.



## MODERN OFFICES

The modern working world is constantly changing. This is particularly evident in the increasingly popular open-space offices, which are often characterised by floor-deep windows and large office areas without any separating walls. Here, it's important to use the existing area optimally and to remain as flexible as possible in terms of the positioning of furniture. At the same time, not only functional but also aesthetic requirements need to be fulfilled. OBO balances these challenges by offering the DBL Desk-boxes and the open, screed-flush brush-strip trunking system, amongst other things.





# System solutions for data centres

## OBO ensures a **safe and reliable** electrical installation

Try to imagine our modern world without the internet, without social media and without web-based services. It's simply no longer possible. There is an ever-increasing amount of data and more and more digital content that needs to be stored, processed and archived, which is made possible by data centres. They are not only an important part of digitalisation, but also form the heart of every company, bank, clinic and public office. Numerous types of sensitive information are stored here. And absolute functional security and reliability have the utmost priority.

Data centres differ in terms of their structural conditions and infrastructural connection, so that a distinction can generally be made between small, medium-sized and large data centres. Small data centres are often set up as stand-alone solutions or integrated into existing systems. Medium-sized data centres are used by service providers and also in service centres for data back-up and archiving. Large data centres are also used by service providers and in service centres for data back-up and archiving. They can be found in large companies as well as in infrastructure buildings such as airports or railway stations.

Regardless of the type of data centre, OBO ensures efficiency in the installation of the electrotechnical infrastructure as well as a high level of safety during operation. The advantage is that here too, OBO offers a complete solution from a single source – from lightning and surge protection, to cable and line routing, through to fire protection.

### The advantages of the OBO solution at a glance:

- Everything from a single source: The individual system components interlock perfectly
- Service@OBO: We support your project with customised support from initial planning to final installation
- Many years of experience and expertise from numerous projects: Benefit from our expert knowledge
- Well-founded installation and planning aids

## Our products for **your project**

We ensure more efficiency and security in data centres with solutions from the following product areas:

- **External lightning protection:**

Lightning protection systems from OBO help to maintain the functionality of data centres when hit by lightning strikes directly to prevent any interruptions.

- **Earthing and equipotential bonding:**

A reliable earthing system and reliable equipotential bonding form the basis for the safe operation of all electrical systems in data centres. OBO offers a wide range of product components.

- **Surge protection:**

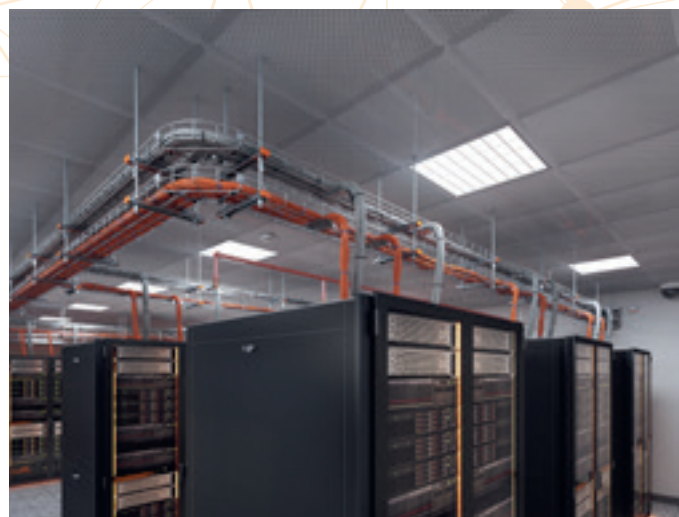
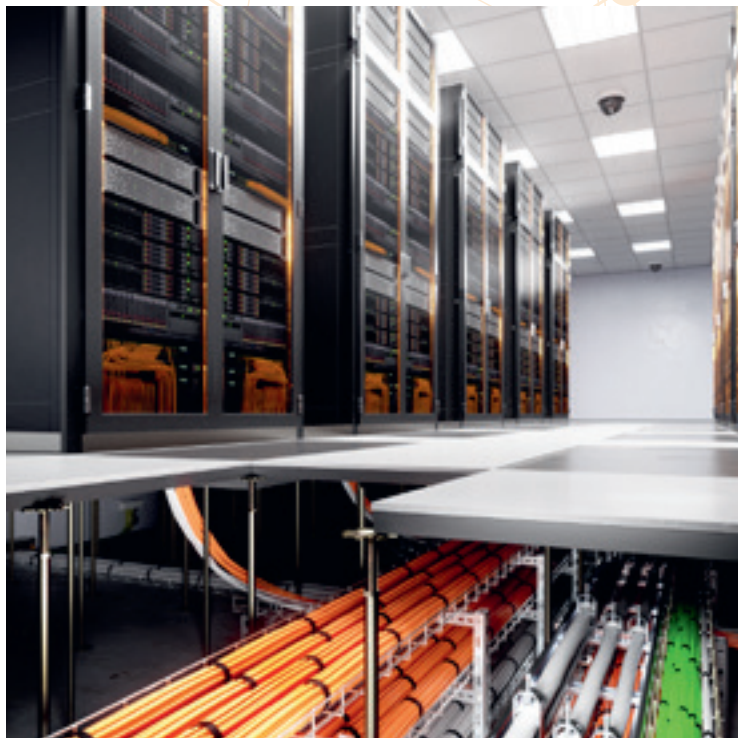
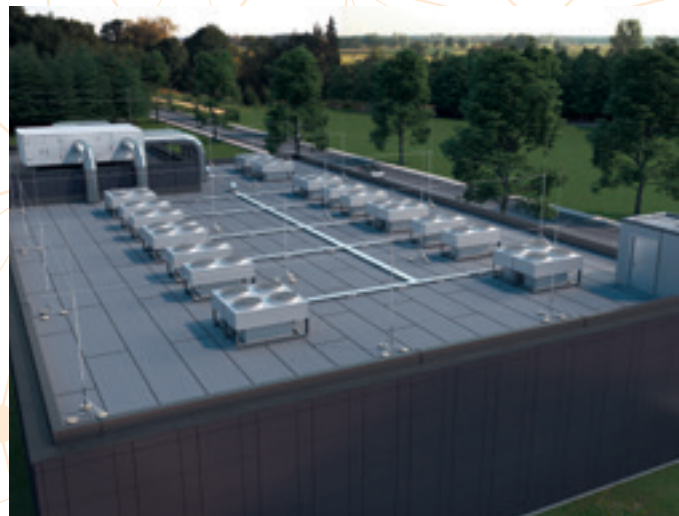
On the safe side even in an emergency – OBO systems protect against damage caused by surges that are coupled into the systems via the supply and data network.

- **Cable and line routing:**

Regardless of whether you are laying individual cables and lines or complex cable bundles – with OBO, every cable and line routing challenge in data centres can be overcome.

- **Fire protection:**

In the event of a fire, the spread of both smoke and fire must be prevented, escape and rescue routes secured, and the function of important electrical systems maintained. Solutions for all three protection goals can be found in the OBO portfolio.





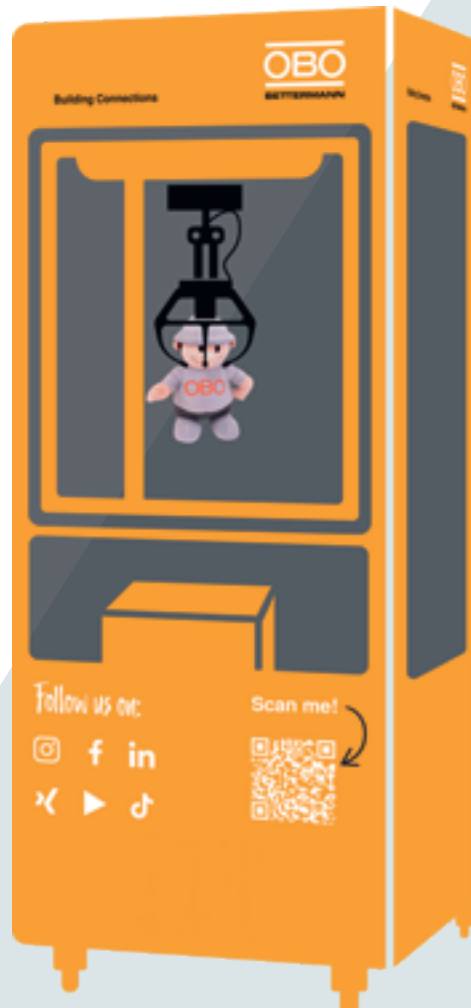
# Shaping the future together



## Discover how we live **sustainability** at OBO

Sustainability has always been a matter of course for OBO and we have set ourselves a clear goal for the coming years. Together with our employees, customers and partners, we will continue to develop the globally networked world and thus set the course for a more sustainable future. At our OBO trade fair stand, we will be happy to show you which milestones we have already reached and which measures we have already implemented. In a separate themed area, you will have the opportunity to talk to us and find out all about sustainability at OBO.

We also have a little extra something for you: There is a competition waiting for you that will challenge your dexterity as well as your patience. Will you be able to grab one of our OBO man figures at our automatic claw machine and qualify for our prize of the day? Even if not, it's always worth taking part, because every participant is guaranteed a pack of seed balls. With these flower mixtures, you can make a small but important contribution to conserving nature – true to our motto: Shaping the future together.





## Get an overview of our projects

Would you like to find out which projects we have already been able to achieve? You will have the opportunity to do so at the OBO trade fair stand. Here you will find not only an overview of all the ecological, economic and social measures that we have been able to realise at our international locations, with our products and beyond, but also our OBO experts who will be happy to tell you more about each individual project in a personal discussion. Would you like to know more about the Christoph Bettermann schools in Uganda or about our digital solutions for customers and employees? We would also be happy to explain to you how we are switching to sustainable packaging and shipping materials with a variety of measures.



## Find out how much sustainability there is in our flush-mounted and cavity wall boxes

Did you know that our flush-mounted and cavity wall boxes are not only clever and efficient, but also sustainable? They are manufactured using 100% green electricity and the cavity wall boxes also consist of 80% high-quality recycled materials. You can discover these and other product innovations made from recycled materials at our OBO trade fair stand.



## Track the CO<sub>2</sub> savings of our OBO-owned PV system on our dashboard

In 2023, we put OBO's own photovoltaic system into operation at our Menden site, which was another important step towards a more sustainable future. The PV system – with a total output of 2.3 MW – was installed on the roofs of our Metal Competence Centre and the logistics hall. Both buildings offered ideal conditions for this. The energy generated by our PV system covers 80% of the electricity consumption for production and administration at the Metal Competence Centre. At Light + Building, you will even have the opportunity to track the savings and performance generated by our PV system on a dashboard.



## Find out more about our first OBO Sustainability Report

We are proud to announce the publication of our first OBO Sustainability Report. It is based on the GRI Standards and summarises all the relevant facts, figures and data on sustainability at OBO. You can find out more about our Vision and Mission as well as the standards and norms that guide us on the path to a more sustainable future. We will be happy to present our Sustainability Report to you at Light + Building and answer any questions you may have.



# The **powerhouse** amongst anchors!

## **OBO DeltaPush:** the new generations of plastic push-in anchors

We set standards in push-in technology: with the OBO DeltaPush – our new plastic push-in plug. The OBO DeltaPush is quick and easy to install and impresses with its high pull-out values in various substrates. It enables flexible use in almost any installation situation and is supplemented by a comprehensive range of accessories. With these properties, the push-in anchor fits perfectly into the diverse OBO portfolio of connection and fastening technology.

We invite you to a special test of strength: Come to the OBO exhibition stand and put the OBO DeltaPush to the test in our speed challenge. Prove your speed, dexterity and strength when it comes to solving an installation task as quickly as possible with our new anchors. Can you beat your opponent in a duel?



## **More** clarity, **simpler** selections

### Aligned fittings for all OBO cable trays

The diverse OBO cable tray systems stand for efficiency, resilience and safety. This applies to the screw-on variants as well as the cable trays with the innovative Magic plug-in connection. They are easy and quick to install. The standardised fittings, which are compatible with all OBO cable trays, really speed up the installation process. This not only ensures faster installation and flexible handling; it also streamlines stock-keeping.

### How to master any installation challenge

Cable trays cannot always be installed in a straight line. Different installation environments require customised solutions. This is exactly where OBO fittings come into play, as they make it very easy to create branches and changes of direction. The portfolio consists of 90° bends, 45° bends, variable bends with individually adjustable angles, add-on tees for creating a horizontal branch, and T pieces for creating horizontal branches and cross-overs. The matching, further-optimised cover is available for each fitting, and all fittings have an integrated connection so that no separate connectors are required.



# The two-part screed-covered EÜK duct system

## Easy to install without pulling cables

The screed-covered EÜK duct system is the ideal underfloor solution for large areas with fixed furnishing plans, for example in office or administration buildings. It ensures a high degree of flexibility in the power supply from the floor area and is characterised by a two-part underfloor box (UZD) and a corresponding two-part EÜK duct. This makes the installation of ducts and the laying of cables much easier.

### Easy access to the installation: the two-part UZD underfloor box

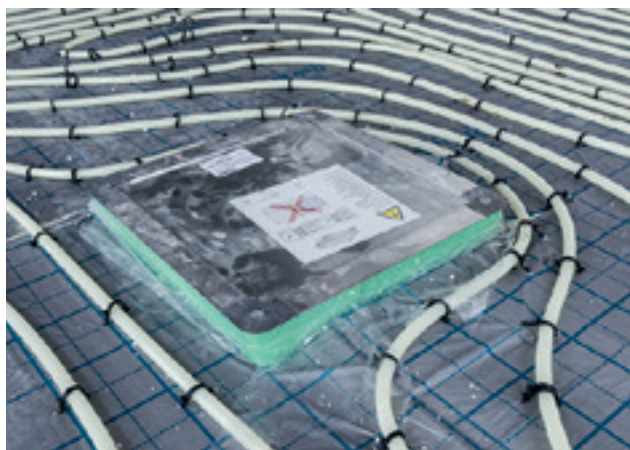
The two-part UZD underfloor box of the EÜK system makes work on the construction site much easier. This is ensured by these product features, amongst others:

- Tool-free quick height adjustment of the UZD in the range of 70–170 mm
- Corner elements in hybrid design
- Tool-free use of the protective plate
- Very large levelling range for a wide variety of floor structures thanks to additional sleeves



## Easy to install and can be combined with floor heating systems

The underfloor ducts and underfloor boxes of the EÜK system from OBO are installed directly on the bare concrete. Insulation layers are used to protect against heat loss and to reduce impact sound. These insulation layers fully encase the duct system, and a combined system with underfloor heating in the screed is also possible. The duct system lies below the underfloor heating and is therefore completely separated in the insulation layer.



### More advantages of the EÜK system at a glance:

- Large adjustment range from 70 to 220 mm screed height
- Decouplable underfloor boxes prevent cracks in the adjacent floor covering and screed
- Installation of sockets, data and multimedia connections is possible via OBO's own Modul 45 series
- Can be upgraded to a heavy-duty system: The load-bearing capacity of the EÜK system is tested in accordance with DIN 50085-2-2





# Reliable **surge protection** for PV systems

The **new generation** of OBO generator connection boxes

In order to offer even better protection for photovoltaic systems against lightning strikes and damage through surges, we have relaunched our portfolio of generator junction boxes for PV systems. The boxes, which are pre-terminated with lightning and surge protection, now protect the DC-side input of the PV inverter even more effectively and reliably.

The housings of the generator junction boxes are UV-resistant and therefore ideal for both indoor and outdoor installation. With IP66 and IK07 ratings, they also offer a high degree of protection. The cables are connected quickly and securely using terminals with push-in technology. The scope of delivery already includes cable glands, membrane pressure equalisation elements and external fastenings. The generator connection boxes can also be mounted next to each other. This not only saves on fastening materials, but also on space and time. Mounting instructions and technical data for the boxes can be accessed easily at any time using a QR code.



# We say goodbye to our mascot... ...and present his successor!

As already announced in the last OBO Blick, it was time for a new look for our OBO man. So we bid him a fond farewell at the end of 2023 and sent our previous mascot into a well-deserved retirement. The OBO man has always been internationally orientated and passes the time by travelling the world – as our photo gallery shows:



## Welcome! This is the new OBO man!

Of course, we have found a worthy successor for our mascot and are delighted to present the new OBO man to you. His first big appearance will be at Light + Building – where else! With a bit of luck, you'll meet him here in person. Of course, the OBO man is just as international and versatile as his predecessor, so that all OBO locations worldwide have received their own individualised national figure, and numerous other variants of the new OBO figure are being created for our individual product units as well as for special occasions.





# A little **fun** is a must!

Jan-Lennard Struff achieves success at the **Davis-Cup** in Hungary



Clearly, whether it was the OBO logo on his sleeve that spurred Jan-Lennard Struff on during his Davis Cup appearance cannot be proven. What is certain, however, is that his singles victory, in Hungary on the first weekend of February 2024, ensured that Germany made it through the qualifying round and into the main round of the Davis Cup.

“Struffi”, who has been sponsored by OBO for a long time, was supported by celebrity fans. In addition to the well-known entertainer and singer Roberto Blanco, company boss Ulrich Bettermann also kept his fingers crossed nearby, which certainly contributed to the success.

All three then travelled back to the Sauerland region on the Bettermann private jet. The victory was duly celebrated with the family at Arnsberg-Menden airfield in the neighbouring company restaurant JU52. True to the motto coined by Roberto Blanco: A little fun is a must.



Jan-Lennard Struff



# Support & contact

You can contact our Customer Service department on:

**+49 (0)2373 89-1700**

**Monday–Thursday**  
07:30–17:00

**Friday**  
07:30–15:00

**export@obo.de**

## Building Connections

OBO Bettermann has offered innovative products and matching solutions for electrical installations for over 100 years. With our many years of experience and our comprehensive product range, we are one of the leading manufacturers in this area. OBO's special spirit of innovation flows into each of our currently more than 30,000 products – the guarantee of continuous further development, even in the future. Our partnership with our customers is crucial for this further development. If you have any questions about products, mounting or planning, OBO employees will be happy to provide you with expert support at every stage of your project.

## OBO Support: A plus for you

Every OBO product carries a plus inside it. It is developed, manufactured and tested with a high level of competence, from the idea through to the final check. Benefit from flawless logistics through to practical information. We can offer additional security through certificates on the conformity of our products with the most important standards and directives.

## Imprint

Published and edited by

OBO Bettermann Holding GmbH & Co. KG  
P.O. Box 1120 \* 58694 Menden \* Germany  
Tel. +49 (0)2373 89-0  
Fax: +49 (0) 2373 89-1238  
export@obo.de

www.obo-bettermann.com

## Images

OBO Bettermann Holding GmbH & Co. KG  
Pages 3, 4, 7, 12, 16, 17, 18, 19, 20, 21, 22,  
23, 24, 25, 26  
iStock pages 1, 6, 7, 8, 9, 10, 11, 14, 15, 22  
Vecteezy page 20

## Comments...

...or questions can be sent to the editorial team via:

Julia Belz  
Corporate Communications Manager  
export@obo.de

**OBO Bettermann Holding GmbH & Co. KG**

P.O. Box 25  
58640 Menden  
GERMANY

**Customer Service Germany**

Tel.: +49 (0)2373 89-1700  
Fax +49 (0)2373 89-1238  
[export@obo.de](mailto:export@obo.de)

[www.obo-bettermann.com](http://www.obo-bettermann.com)

© OBO BETTERMANN 03/2024 EN