



Simple to handle, flexible to use.

Child's play.

More options, less work.

luxKIT, the new linear modular LED system.



Find out more

Installation at the speed of light. Faster and easier.

Installing luxKIT, the new linear modular LED system, is child's play; the product can be ordered online at any time, it is efficient and repairable.

Benefits at a glance

01

Flexible modular LED system for linear light made to measure

02

Installation at the speed of light with click system

03

Simple to handle and easy to install

04

Continuous light without shadows

05

No soldering, tool-free installation, feed-in is possible anywhere

06

Ready2Repair: components can be replaced at any time, making the product sustainable

07

Patented worldwide innovation

08

New app for ease of planning and ordering

luxKIT – a win-win product!



For professional users

- Flexible options for feed-in and connection
- Extremely easy installation and huge time saving
- Planning and ordering by app
- Warehouse stock, fast delivery



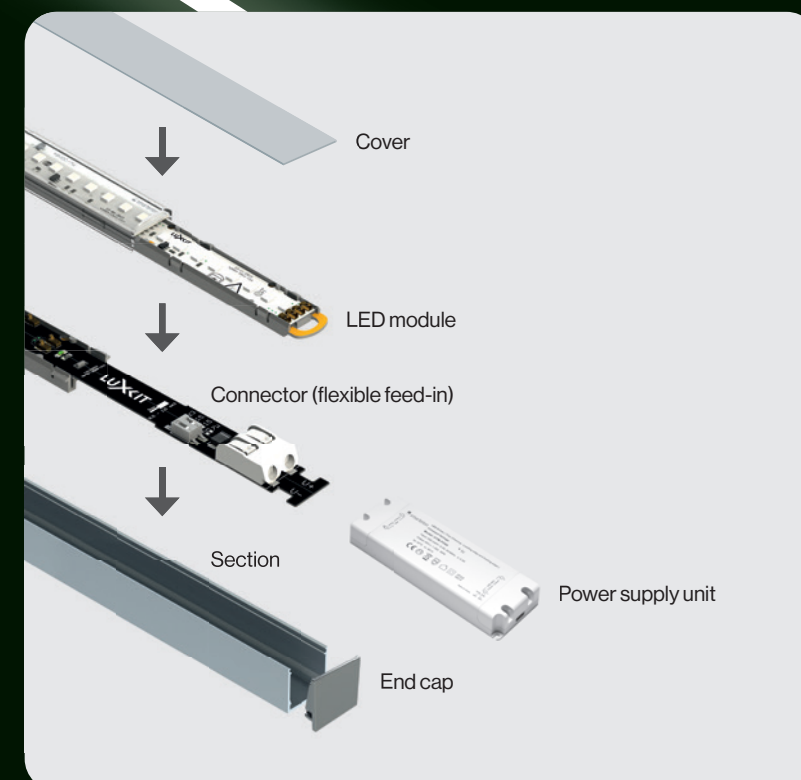
For distributors

- Can be configured and ordered online (reducing costs for distributors)
- Reduced stock owing to standardised modular system
- Integration into your webshop
- Components suitable for pallets, length of section ~ 2.4 m

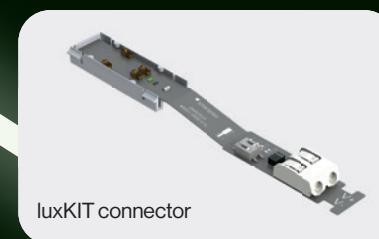


For architects and planners

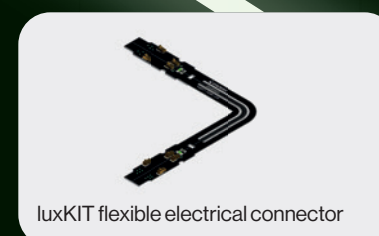
- Flexible modular system for easy planning
- App with planning tool for visualisation and implementation
- Digital data available for CAD, Relux and Dialux



luxKIT LED module



luxKIT connector



luxKIT flexible electrical connector

The new simplicity.

luxKIT with digital ordering by app.

Key functions

- Simply sketch the rooms and take measurements with a Bluetooth-capable laser or import measurements to the app
- Select light lines
- Plot selected light lines in rooms
- Shopping cart with automatically created parts list of all required articles (electrical feeder, LED sections, LED module, electrical connectors, end caps, and cover)
- Shopping cart can be transferred directly to the wholesaler for ordering
- Versions in German and English, for Android and iOS

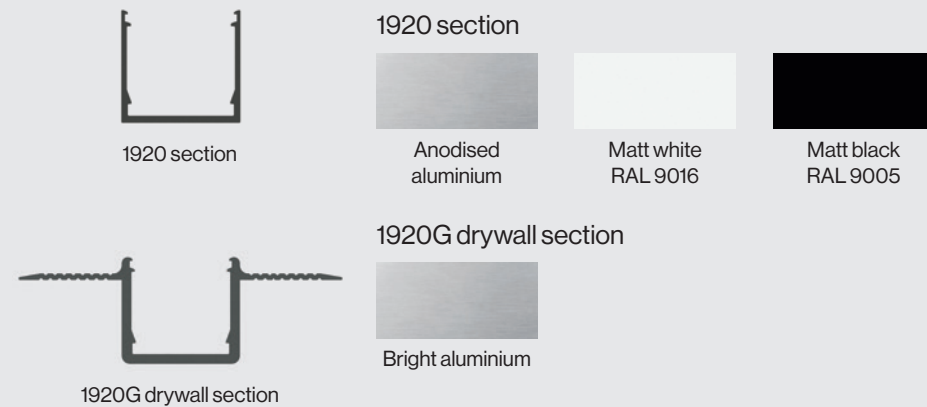


INNOVATION:
digital luxKIT
planning and
ordering app

Our new app!
For ease of
planning
and ordering.

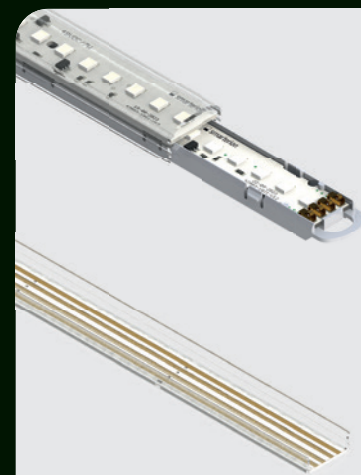
Summary of components

luxKIT section



Sections with smooth, premium surface structure, no annoying grooves. Drywall section only available in bright aluminium. Length 2.4 m

luxKIT LED module



Feed-in may be effected from anywhere; freely movable

Light colours

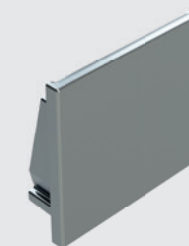


Exchangeable LED modules that can be made to measure, with protective cover and electrical linear LED connector

Features

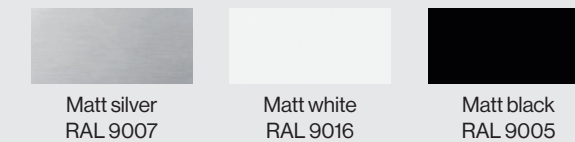
- Continuous light without shadows
- Length: 1140–1199 mm (LED module continuously adjustable)
- High system efficiency: 840 = > 120 lm/W
- Adjustable to 3 light output levels: 7W/m 1085 lm/m, 15W/m 2325 lm/m, 23W/m 3565 lm/m
- 48V DC constant voltage allows for long cables
- Easy click-in installation on LED section
- 48V external control gear, secondary cable length up to 15 m
- Easily cut to the desired length, cutting grid 60 mm

luxKIT end cap



End cap 1920

Dimensions and types

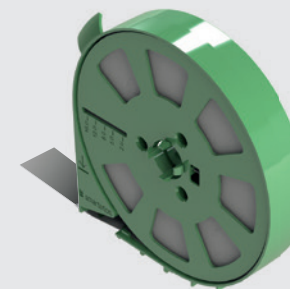


End caps without screws in the colour of the section.

1920 section: W20×H19 mm

1920G drywall section: W20×H19 mm

luxKIT opal cover



Homogeneous opal cover made of polycarbonate, incl. unrolling tool with integrated installation aid

Features

- 20 m on one reel
- Innovation: reel simultaneously serves to easily install the reeled up cover
- High transmission 70%
- Can be easily cut to the desired length

luxKIT connector for feed-in



Features

- Wago connection terminal 0.5–1.5 mm², max. 4.2A/50V
- Output of LED module adjustable by means of a DIP switch (7 W/m, 15 W/m, 23 W/m)
- Green status LED for 48V voltage monitor
- Flexible position

luxKIT flexible electrical connector



luxKIT flexible electrical connector for connecting 2 luxKIT sections at will (any angle ≥ 0–360° is possible), max. 4.2A/50V, green LED for 48V voltage monitor

Control gear 48V DC



SWITCH-DIM and DALI control gear

Dimensions

60W L 195×W 43×H 30 mm

100W L 225×W 43×H 30 mm

200W L 325×W 43×H 30 mm

DALI control gear: dimmable with DALI dimmers in a dimming range of 100–1%. These devices can also be dimmed with SWITCH-DIM 230V using standard buttons. For professional lighting control, we recommend using DALI-Bus, Casambi or DALI-Broadcast with a DALI synchro.

60W DALI/SD Art. no. 28003841

100W DALI/SD Art. no. 28003842

200W DALI/SD Art. no. 28003843



TRIAC control gear

Dimensions

60W L 212×W 56×H 21 mm

90W L 212×W 56×H 21 mm

200W L 343×W 68×H 41 mm

TRIAC control gear is dimmable with most commercially available LED reverse phase dimmers within a range of 100–30%, and even down to 1% depending on the dimmer. Due to pulse width modulation and depending on the dimmer type, a slight flicker may occasionally occur. For professional lighting control, we recommend using DALI control gear.

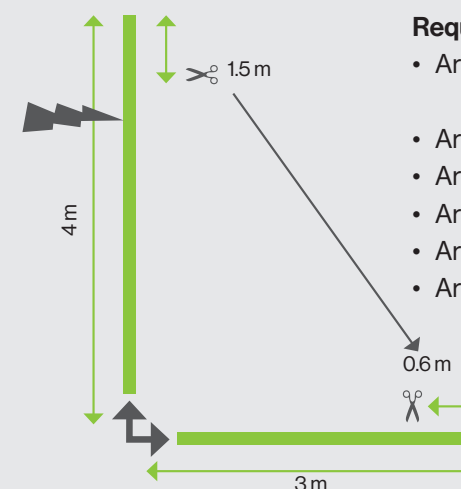
60W TRIAC Art. no. 1007406

90W TRIAC Art. no. 1007408

200W TRIAC Art. no. 1007704

Application examples

L light line with section 1920, anodised, 830 with 15W/m

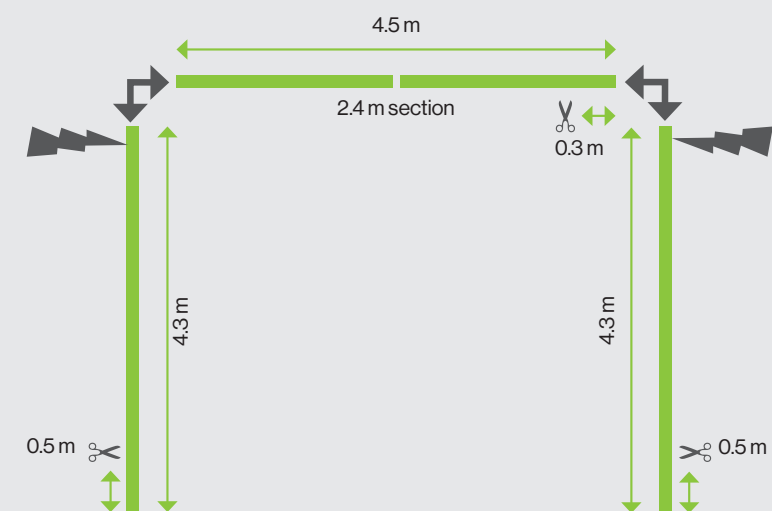


Required components:

- Art. 1007651 3× luxKIT 2.4 m LED section 1920, anodised aluminium
- Art. 1007653 6× luxKIT 1.2 m LED module 830
- Art. 1007669 1× luxKIT connector
- Art. 1007694 1× luxKIT flexible electrical connector
- Art. 28003842 1× luxKIT converter DALI 100W
- Art. 1007745 1× set of 2 luxKIT end caps, silver

Feed-in location 48V DC can be chosen freely

U light line with section 1920G drywall, 840 with 23W/m



Feed-in location 48V DC can be chosen freely

Required components:

- Art. 1007759 6× luxKIT 2.4 m LED section 1920G drywall, bright aluminium
- Art. 1007654 12× luxKIT 1.2 m LED module 840
- Art. 1007669 2× luxKIT connector
- Art. 1007694 2× luxKIT flexible electrical connector
- Art. 28003843 2× luxKIT converter DALI 200W
- Art. 1007745 1× set of 2 luxKIT end caps, silver



Simple to handle, flexible to use.

luxKIT – more options, less work.

- Installation at the speed of light
- Simple and easy to install
- Total flexibility
- No soldering, can be installed almost without tools
- Digital ordering and configuration



Partner of **RELUX®**

SMARTERION AG

Zeughausstrasse 10
8887 Mels
Switzerland
T +41 81 511 21 33
bestellung@smarterion.ch

Find out more



www.smarterion.ch

 SCHWEIZER LED KOMPETENZ