



 **wash[®]t**

www.clmtexfinity.com



Support, the next level

We keep your textiles moving

Introducing the CLMTextfinity Service

In 2010, CLMTextfinity made a promise: to personally ensure the safety, reliability and functionality of every machine – without compromise. And they signed their name to it.

This vow is more than ever alive today through our dedicated and passionate people. And we're building upon their personal commitment with investments in new technology.

Our name is CLMTextfinity – and count on our next level service

A more personalized experience

We put you and your customers at the center of everything we do



Personalized contracts

Flexible service packages offer maintenance and connectivity options to suit your needs.



Custom notifications

Easily customise your communication preferences to access real-time notifications and simplified, faster reporting.



Event alerts

Event-driven alerts keep you in the loop on important updates about your equipment.



Academy

Tailor made education for your technicians help you avoid downtimes, increase product lifespans and plan for the future.

Support the next level

We are committed to being easy to do business with. That means giving you a single place to find all the information you need when you need it. Contact our teams directly via phone, chat or email, and track maintenance and equipment health in real-time.

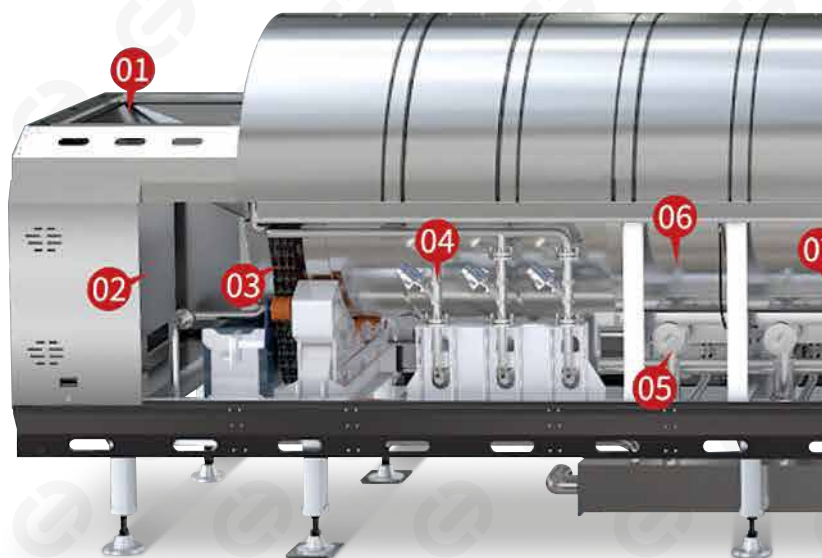


Speed

High Speed Washing

Thanks to advanced engineering and the use of intelligent technology, the S.wash-t is a top performing and versatile tunnel washer, tuned for high production laundries.

- Individual wash speeds for each article/program
- The combination of a unique drum design, a sophisticated water management and high quality industrial parts makes the S.wash-t a top performer both on speed and quality of the washing proces
- The generously dimensioned drain pipes and water valves result in a faster drain, further lowering the cycle time



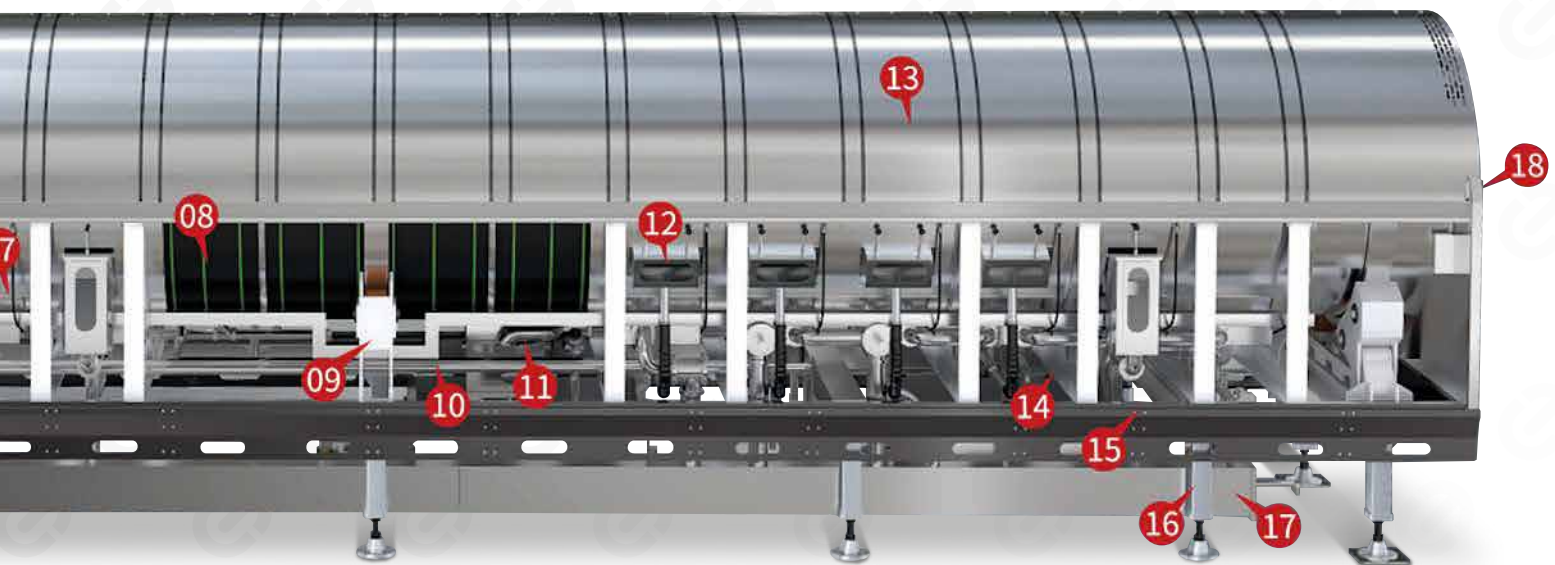
Quality

Advanced Technology and Washing Perfection

Our continuous efforts in maximising the reliability of the S.wash-t has led to a robust design with top quality parts. This results in the excellent washing proces and extends the lifetime of the tunnel washer.

- Heavy duty structure design with a 200mm thick steel frame
- The inner drum is made of 4 mm (!) high quality stainless steel 304, and it's unique design leads to an excellent mechanical action
- After the welding of the several compartments, the permitted margin of tolerance is less than 1mm
- High quality drum seals, made of high quality EPDM rubber (ethylene propylene diene monomer)
- The water injection is controlled by a flow meter, for more accurate water usage control
- 3 supporting points in stead of 2 for better stability, less noise and avoiding deformation





- | | | | |
|------------------------------|---------------------|--------------------|-------------------|
| 01 Feeding inlet | 06 Out drum | 11 Filter system | 15 Panel |
| 02 Electronic control system | 07 Level monitoring | 12 Overflow window | 16 Frame assembly |
| 03 Transmission system | 08 Inner drum | 13 Cover | 17 Drainage tank |
| 04 Infection system | 09 Support | 14 Water tank 2 | 18 Outlet |
| 05 Drain system | 10 Water tank 1 | | |



KiSS

Keep it Simple & Straightforward

Keeping it simple, the design of the S.wash-t and its user interface makes it easy to understand, easy to use and easy to maintain. Using standard parts, widely available surely helps.



- The S.wash-t comes with the bottom transfer, lowering the risk for blockages inside the tunnel and because it doesn't damage the linen as much as in a top transfer or center transfer
- 15-inch color responsive touch screen of high resolution and straightforward menu structure makes generating and changing programs effortless
- 100 recipes
- Drum drive with frequency inverter and strong roller chain
- The drive chain has an automatic lubricating device for a continuously optimal lubrication of the chain
- Large window panels make observing the tunnel washer easy, and are important for a good preventive maintenance
- For easy access to the chain and motor drive, simply open the electrical cabinet
- Smooth maintenance !!
- Standard parts widely available



**IoT**

Internet of Things

Taking full advantage of the interconnectivity, the S.wash-t tunnel washers became cyber-physical solutions, continuously streaming data, leading to more automation, machine learning and real-time information.

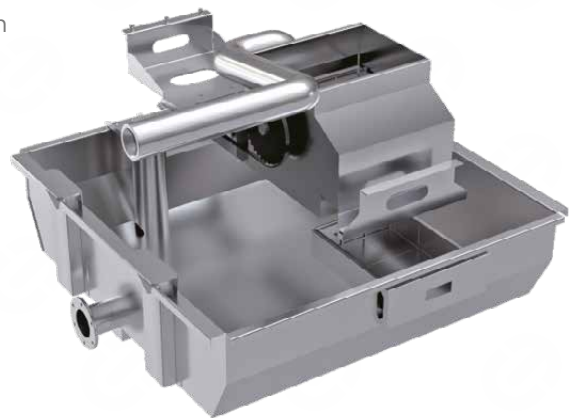
- Selection of the recipe via client, or connected with sorting and/or bag system
- Integrated in the complete washing line (press or extractor, shuttle, dryers ...)
- Storage of production data
- Connection with Central Database
- Operation/service/productivity via smartphone or tablet

**Smart**

Wash Smart !

Making the S.wash-t more and more intelligent lowers the need for complex adjustments and corrects human errors. Smart machines interconnect, optimise the use of resources and generate the information you need, when you need it.

- Sophisticated water management system, ensuring the maximum recovery of reclaimed water for compatible batches
- Integrated lint filter for water recovery
- Water levels are controlled by fiber-optic level sensors, giving a very stable measuring because they can never be impacted by working conditions
- Discover S.pulse: efficiency/productivity numbers shown on a large display

**Flex**

The Art of Flexibility

Continuously listening and learning from our customers made the S.wash-t highly flexible, adaptable to specific needs and easy to customise and integrate into existing installations.

- Intelligent design enabling the handling of all different sorts of linen
- All types of bath exchange are possible: counterflow, standing bath, current flow ...
- For the rinsing, the unique counter flow gives the best result ...

**Eco**

Nature-Friendly

A well-thought design lowers the need of energy and air, leading to savings for our customers and reduces the ecological footprint.

- Thanks to the standard included water recovery tank and filter system, a lower water usage is reached

Technical specs

Batch size	60 kg
Number of compartments	8 to 18 compartments
Drum diameter	1770 mm
With compartments	690 mm
Thickness both in and outer drum	4 mm stainless steel
Water pressure	2,5 ~ 6 bar
Water pipe diameter	DN 65
Connected load	35,5 kW
Power consumption	Between 8 and 18 kWh/h
Steam pressure	3 bar
Steam connection diameter	DN 50
Steam consumption	0,4 ~ 0,6, depending on number of compartments and washing programm
Compressed air pressure	6 ~ 10 bar
Dimensions and weight	Depending on number of compartments

CLMTexfinity designs, develops, manufactures, implements and services a full range of industrial laundry solutions.

Our customers range from industrial laundries and textile rental suppliers as well as hospital and hotel on-premise laundries.

The equipment is constructed in our 3 production factories in China, covering around 133.000 square meters of working space.

Customers highly value our strict standards in production, people and quality management according to ISO9001 norms and we are experienced in both Western and Asian industry cultures, standards and languages.

Our range of products consists of:

Category	Name		Category	Name	
● Wash & Dry	S.wash-t	Tunnel washer	● Full Dry Finish	S.towel-a	Air towel folder
	S.press	Water extraction press		S.omni-a	Air multi folder
	S.dry-p	Passthrough dryer			
	S.wash-e	Washer-extractor			
	S.dry-f	Front loading dryer	● Flatwork Finish	S.grab	Picker
● Sort & Handle	S.bag	Bag system		S.feed-s	Automatic feeder
	S.belt	Conveyors washroom		S.feed-m	Manual feeder
	S.load	Loading conveyors		S.feed-r	Remote feeder
	S.trans	Conveyors finishing		S.iron-c	Chest ironer
	S.control	Control systems		S.fold-l	Folder large pcs
	X.pack	Packing machine		S.fold-s	Folder small pieces
				S.fold-m	Folder multi lane



CLMTexfinity Europe
Hoge Mauw 118
2370 Arendonk
Belgium
www.clmtexfinity.com
Email: info@clmtexfinity.com

CLMTexfinity Asia
No.18 Xiangyun Road, Dianshanhu
Kunshan City
China
www.clmtexfinity.com
Email: info@clmtexfinity.com

Our range of products consists of:

Category Name Category Name