

The fintec logo is displayed in white lowercase letters on a blue square background. A small yellow dot is positioned above the letter 'i'.

FINISHING TECHNOLOGY MADE IN GERMANY



What we do

System technology
Finishing technology
Folding technology
Transport technology

INTRO

In 1991, Fintec founders and managing directors Heribert Ortolf and Robert Schenk realized their goal of achieving optimal dry-cleaning quality through variable high-performance technology for finishing, conveying and folding.

As an internationally oriented family firm, we adapt to the constantly changing requirements in the global market. We provide customers innovative solutions, remaining true to our successful corporate strategy of continuously growing our business with a focus on the long term. We remain concentrated on the development, design and production of system equipment and integrable machines for dry-cleaning. Our customers are textile service providers of all sizes.

We steadily develop new technologies in order to stay one step ahead at all times. This is how we enable consistent processing of laundry and rented textiles at the highest level of quality.

We accompany
our customers
all the way
to the finish



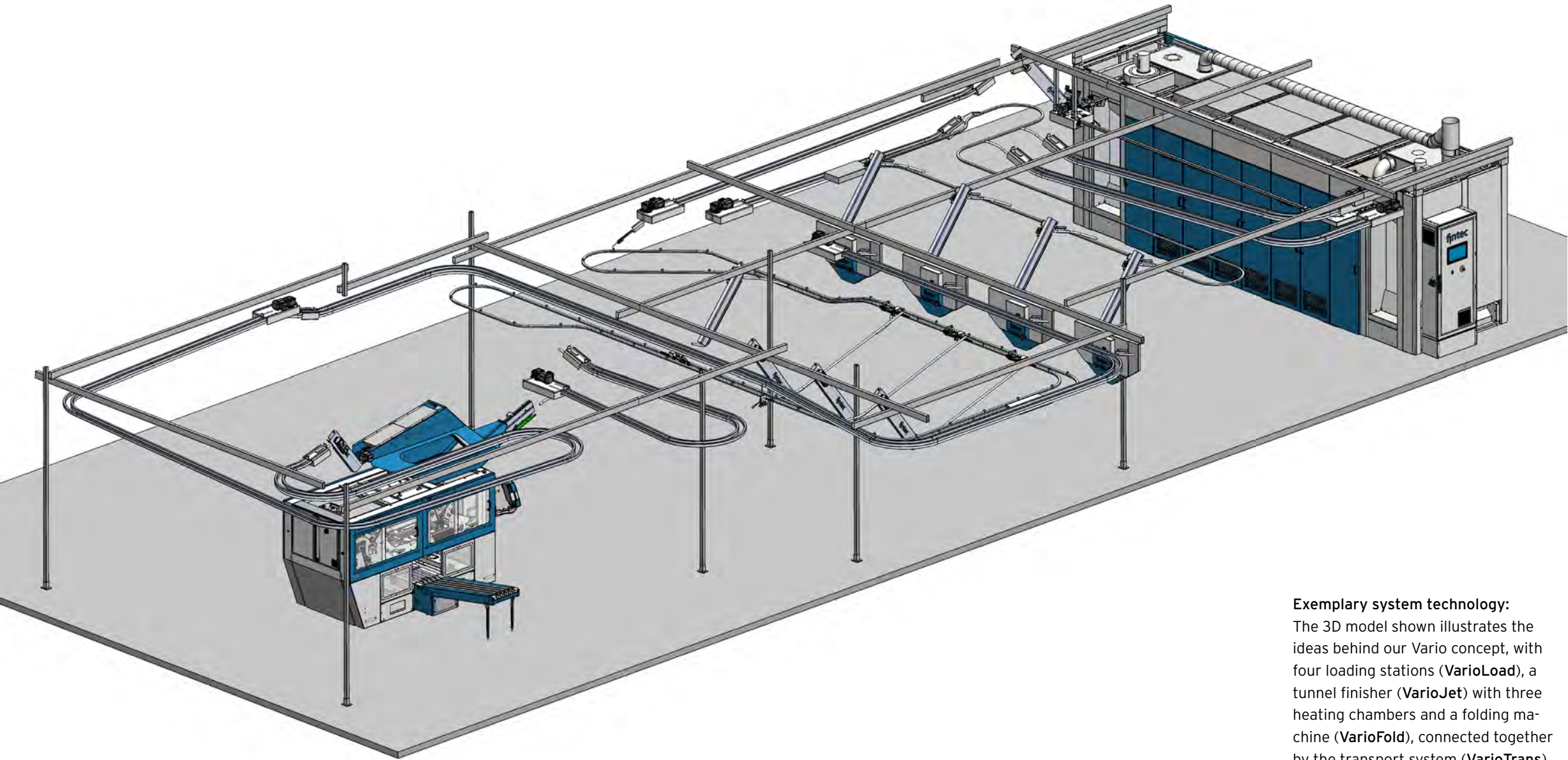
System technology A modular approach for textile service providers	4	Digitalization Open connectivity, data logging, preventive maintenance	18
Finishing technology The core of dry-cleaning technology	6	Your benefits Made in Germany quality and a host of other advantages	20
Folding technology Process precision	10	About the company Our profile	22
Transport technology Moving things straight to where they need to be	16		

System technology

Vario system technology

Fintec offers mature, energy-efficient system solutions around conveying, finishing, folding and sorting technology.

Our **Vario system technology** is highly adaptable to meet both ecological and economic requirements. All system modules are integratable into existing technical concepts. Fintec machines are without exception compatible with other manufacturers' laundry technologies. This allows conversion and retrofitting at any time, as needed.



Exemplary system technology:
The 3D model shown illustrates the ideas behind our Vario concept, with four loading stations (**VarioLoad**), a tunnel finisher (**VarioJet**) with three heating chambers and a folding machine (**VarioFold**), connected together by the transport system (**VarioTrans**).

VarioLoad

For ergonomic laundry loading.

VarioJet

Dries and finishes garments of all kinds.

VarioTrans

Rapid conveyance via the shortest routes - throughout the entire process.

VarioFold & VarioSort

For precision folding, sorting and stacking of laundry.

Finishing technology

VarioJet tunnel finisher

The VarioJet FTS tunnel finisher is the core of the Vario system technology.

Our tunnel finisher, which heats via steam, gas or electrical power, optimizes the drying and finishing of garments with up to 2,000 garments per hour – depending on the type of fabric and textile, fabric thickness, blend ratio and residual moisture.

A unique airflow system with five climate zones delivers outstanding performance and product quality. The fans installed in the lower part of the tunnel finisher, enabling easy maintenance, are a special feature of the VarioJet FTS. In addition to being energy efficient, this Fintec innovation also minimizes thermal stress. Fans, jet nozzles and individually activatable spray steam interact to create tunnel

climates ideal for textiles of any kind. Temperature and air speed can be individually regulated in each chamber, yielding laundry of excellent quality you can see and feel.

VarioJet FT und FTS

The VarioJet FT and FTS product lines consist of the models 006, 106, 206, 306, 406 and 506, with per-hour output ranging from 200 to 2,000 items. FTS models come in a U or L shape, while the FT models are all

Highlights VarioJet

- Differing designs
- IPC controls (industrial PC controls), touchscreen terminal
- Remote visualization
- Preventive maintenance
- Organized into 5 climate zones
- Chain-driven automated filter
- Two powerful, adjustable high-temperature fans in each heating chamber
- Flexibly adjustable fan speed
- Swing doors for easier maintenance
- Gas burners with wide control range (allowing lower temperatures in particular)
- All drives frequency-controlled
- Automated stopping and restarting to save energy
- Connectable to existing transport systems of various manufacturers
- Open connectivity
- Speed and temperature modulation
- Operational data recording



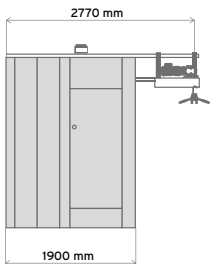
designed as a straight tunnel. All VarioJet machines can be optionally equipped with auger or chain drive.

Our tunnel finisher can be used in autostart mode to further optimize energy efficiency, affording automated stopping and restarting.

VarioJet FT 150 D

Rounding the line of VarioJet tunnel finisher products is the steam-heated VarioJet 150 D for running batches, delivering per-hour output of around 150

items. Separate loading and unloading is possible via an optional second sliding door on the opposite side. This mature Fintec technology meets the needs of laundry and textile rental providers companies of all sizes and corporate structures.



VarioJet FTS and FT models (steam-heated)

	Technical data	FT 150 D, including transport system	FT 006 D	FTS 106 D	FTS 206 D	FTS 306 D	FTS 406 D
	Items/hour	ca. 150 Machine output/h	ca. 200 Machine output/h	ca. 450 Machine output/h	ca. 900 Machine output/h	ca. 1.300 Machine output/h	ca. 1.900 Machine output/h
	Machine dimensions / footprint	L: 2.050 mm B: 1.920 mm H: 2.510 mm	L: 2.530 mm B: 1.900 mm H: 2.690 mm	L: 4.975 mm B: 1.900 mm H: 2.690 mm	L: 6.200 mm B: 1.900 mm H: 2.690 mm	L: 7.425 mm B: 1.900 mm H: 2.690 mm	L: 8.650 mm B: 1.900 mm H: 2.690 mm
	Weight	ca. 1.600 kg	ca. 1.800 kg	ca. 3.200 kg	ca. 4.600 kg	ca. 6.100 kg	ca. 7.500 kg
	Steam operating pressure	0,7 - 1,3 MPa (7 - 13 bar)	0,7 - 1,3 MPa (7 - 13 bar)	0,7 - 1,3 MPa (7 - 13 bar)	0,7 - 1,3 MPa (7 - 13 bar)	0,7 - 1,3 MPa (7 - 13 bar)	0,7 - 1,3 MPa (7 - 13 bar)
	Standard power connection	400 V; 50 Hz; 32 A	400 V; 50 Hz; 32 A	400 V; 50 Hz; 32 A	400 V; 50 Hz; 63 A	400 V; 50 Hz; 63 A	400 V; 50 Hz; 100 A
	Exhaust connection	DN 180	DN 180	DN 180	DN 250	DN 250	DN 250

VarioJet FTS and FT models (gas-heated)

	Technical data	FT 006 G	FTS 106 G	FTS 206 G	FTS 306 G	FTS 406 G	FTS 506 G
	Items/hour	ca. 200 Machine output/h	ca. 450 Machine output/h	ca. 900 Machine output/h	ca. 1.300 Machine output/h	ca. 1.900 Machine output/h	ca. 2.400 Machine output/h
	Machine dimensions / footprint	L: 2.530 mm B: 1.900 mm H: 2.690 mm	L: 4.975 mm B: 1.900 mm H: 2.690 mm	L: 6.200 mm B: 1.900 mm H: 2.690 mm	L: 7.425 mm B: 1.900 mm H: 2.690 mm	L: 8.650 mm B: 1.900 mm H: 2.690 mm	L: 9.875 mm B: 1.900 mm H: 2.690 mm
	Weight	ca. 1.800 kg	ca. 3.200 kg	ca. 4.600 kg	ca. 6.100 kg	ca. 7.500 kg	ca. 8.800 kg
	Steam operating pressure	0,5 - 0,7 MPa (5 - 7 bar)	0,5 - 0,7 MPa (5 - 7 bar)	0,5 - 0,7 MPa (5 - 7 bar)	0,5 - 0,7 MPa (5 - 7 bar)	0,5 - 0,7 MPa (5 - 7 bar)	0,5 - 0,7 MPa (5 - 7 bar)
	Gas connection	10 m³/h, H-gas natural gas, (min. 35 mbar, max. 100 mbar)	10 m³/h, H-gas natural gas, (min. 35 mbar, max. 100 mbar)	20 m³/h, H-gas natural gas, (min. 35 mbar, max. 100 mbar)	30 m³/h, H-gas natural gas, (min. 35 mbar, max. 100 mbar)	40 m³/h, H-gas natural gas, (min. 35 mbar, max. 100 mbar)	40 m³/h, H-gas natural gas, (min. 35 mbar, max. 100 mbar)
	Standard power connection	400 V; 50 Hz; 32 A	400 V; 50 Hz; 32 A	400 V; 50 Hz; 63 A	400 V; 50 Hz; 63 A	400 V; 50 Hz; 100 A	400 V; 50 Hz; 125 A
	Exhaust connection	DN 180	DN 180	DN 250	DN 250	DN 250	DN 250

Folding technology

Folding robot VarioFold F 85 M/A

For the (second-to-) last step in your (optionally fully automated) process, our folding technology comes in variants. The VarioFold F 85 is for processing work clothing, hospital and resident laundry, among other input items, while the VarioFold mini is an automated machine for small batches of compact dimensions. The VarioFold TR 45 is for terry towels and flat linen like bath towels, blankets, diapers, laundry bags, etc.

Based on your requirements profile, we will find the right technology for you that affords maximum cost-effectiveness.

Folding robot VarioFold F 85 M/A
Our high-performance VarioFold machines fold all types of goods with consistent quality. The F 85 M model is manual while the F 85 A is automated. Importantly, these models have a unique Fintec feature: the manual-operation machine version is upgradable fully automated at any time by installing a supplemental module. You don't have to buy a new machine or modify the machine itself, just connect the attachment needed for pulling out the automated hangers. The automated model is still usable in manual mode. Switching over is possible at any time to meet your needs, simply by changing the program on the operating

terminal. Automated length measurement enables the machine to recognize the differing lengths of top-worn garments. Manually changing programs is not necessary.

You have a clear view into the machine from all sides, and it can be optionally equipped with interior lighting. An optional overalls element is available, enabling complete processing of workwear.

The VarioFold F 85 gives you a wide range of options, as folding and sorting units can be installed in many different configurations, and expanded as required for optimum productivity, based on your laundry capacity. Here too, our modular approach is key.

The machine supports optional sorting according to two criteria, without a separate sorting attachment required. If sorting is to take place according to more than two criteria, a sorting attachment is required, which is optionally available.

After folding, garments can be placed on a variable number of stacking belts. Via an automated process, the folding machine smoothly transfers each item to the sorting attachment connected to the side or rear of the folder.

See **page 14** for more info on the benefits our folding machine delivers.



VarioFold F 85 A



VarioFold F 85 M

Highlights VarioFold F 85

- Frequency-controlled transport drives
- Vacuum-supported loading surface for affixing garments
- Separate longitudinal and transverse folds
- Automated length measurement
- Up to three cross-folds
- Optional: Thickness detection
- Easy conversion to fully automated machine

VarioFold mini

VarioFold mini

Perfectly folds garments in small-quantity item groups; minimal footprint; only a single machine operator required. The VarioFold mini gets it done. The innovative new **VarioFold mini** is a compact, high-performing and easy-to-operate garment folding machines. This machine meets the needs of a host of textile service providers. Now by investing a modest amount in equipment you too can flexibly respond to market changes.

VarioFold mini is the solution for smaller laundries looking to make their processes more economical through digitalization and complete automation of all steps. The space-saving folding robot is an attractive option for larger providers interested in adding new or more specific product groups in smaller quantities to their portfolio, such as healthcare textiles and light workwear for industry, retail and the hotel and restaurant businesses.

Like all Fintec modules, the digitalized, fully automated **VarioFold mini** fits seamlessly into existing finishing systems, affording reliable, precise folding of to up to 500 garments per hour, of nearly any kind.

The machine only requires 2.2 square meters of floor space. A conveyor belt attaches to the rear or side. The automated hangers are pulled out automatically; and the touchscreen terminal affords easy, intuitive operation. Integrated digital diagnostics with preventive maintenance ensure a smoothly running process.

With this small machine, you can position yourself bigger.



Highlights VarioFold mini

- Output up to 500 items/h depending on foldingtype
- Suitable for healthcare and light workwear garments
- Basic folding dimensions appr. 400 x 200 mm
- Small machine footprint of 2.00 m x 1.10 m
- Integratable into existing systems
- Laundry feed via automated hangers
- Touchscreen terminal for intuitive operation

VarioFold TR 45

VarioFold TR 45

The **VarioFold TR 45** takes care of all time-consuming processes of folding, sorting and stacking dry laundry in an array of formats, from bath towels to blankets, from diapers to laundry bags—with no pre-sorting required.

Our machine exclusively works with mechanical blade folding, not with air. The reason for this is simple: air is more expensive, and mechanical ‘blade’ folding affords significantly better quality. The stacked items can be outputted via four individual discharge belts or one single belt. Sliding belts carefully place the laundry stacks on the belt on the long side of the machine.

A fan at the machine inlet sucks in fluff, which is transported off into a box through a tube. The box is located beneath the loading surface; it opens like a drawer for convenient emptying. A transparent pane allowing viewing of the crosswise-folding area is an example of the machine’s user-friendly design.

Further advantages of our folding technology

The **VarioFold F 85** and **TR 45** have a thickness compensation functionality that allows processing of both very thin and very thick laundry items. In the **TR 45**, this function is beneficial for trouble-free processing of laundry bags with cords and cord stoppers, for example.

If you are already using machines with a common conveyor belt made by another manufacturer, our machines are able to communicate with the existing system, affording seamless integration.

If a laundry item gets stuck, you can use the terminal to control its unloading out of the machine. This is a particularly important function, as it upholds high safety standards. Opening the machine for removal by hand is thus only necessary in exceptional cases.

When we develop folding technology, there’s a lot more to it than just precision laundry folding.



Highlights VarioFold TR 45

- Frequency-controlled transport drives
- Two lengthwise folds, two crosswise folds, four stacking belts
- Automated selection of folding formats/stacking places
- Freely programmable folding formats
- Two versions with maximum item length of 1.80 and 2.40 m respectively

Transport technology

VarioTrans transport and VarioLoad loading systems

Laundries and textile service providers of all sizes have recognized the benefit of utilizing variable, expandable complete solutions. Fintec offers integratable, adaptable system technology for industry-relevant transport of laundry items. Vario transport technology delivers the logistical performance and reliability our customers demand.

VarioTrans transport system

The **VarioTrans** transport system ensures transport of laundry items from the **VarioLoad** loading station to the **VarioJet** tunnel finisher and on to the **VarioFold** folding machine. The system seamlessly integrates into existing production processes and structures, and

is compatible with technical systems of other makes. Fintec transport systems are customizable to meet your requirements, optionally equippable with accumulation, circular or ascending transports. This flexibility is ideal for a logistically optimal, and thus economical, operational process.

VarioLoad loading station

The fully automated, ergonomic **VarioLoad** loading station is designed for healthier working and continuous productivity. **VarioLoad** ensures reliable, convenient loading of up to 490 garments per hour. Easy to use from either side, plus stepless-adjusting work height—both important factors! Empty

hangers are fed from a storage magazine in full automation via separator. The infeed start command is executed contactless via photocell; hangers are then transported to the finisher on the ascending transport controlled via frequency converter. The basic **VarioLoad E** infeed system is an efficient, cost-effective alternative for single-side laundry loading. Fintec Vario automated hangers ensure optimal garment transport in any system configuration.

VARIOTRANS



Highlights VarioLoad

- Touchscreen terminal
- An optional second, smaller panel on the opposing side enables convenient operation from either side (operation from either side still possible without the second control panel)
- Stepless-adjustable work height, adjusts by 200 mm
- Fully automated infeed and individual separating out of empty hangers from the storage magazine
- No-slip affixing for garment loading
- Terminal makes troubleshooting easier
- IPC controls (industrial PC controls)

Highlights VarioTrans

- Transport system display/terminal offers extensive visualization options
- Real-time status display for all main system components (inductive sensors, stoppers, drives, motors, etc.)

Vario automated hangers

Vario automated hangers are a tried-and-true Fintec technology compatible with transport systems made by other brand-name manufacturers. Its modular design makes the machine a superior long-term investment. All components are replaceable, ensuring a long useful life for every hanger. The automated hangers comes in several variants, with shoulder pad, for example, or in a special design for overalls.

Vario automated hangers: benefits

- Convenient loading of individual garments
- Rugged for transport
- Modular design affording long useful life
- Chip mounting on left or right
- Compatible with other brand-name systems
- Easy to retrofit (switching flags, shoulder pads, barcode holders, etc.)

Digitalization

Open connectivity, data logging, preventive maintenance

Digitalization is a key requirement for energy-optimized operation of modern finishing technology. We thus provide you the latest technical possibilities to simplify maintenance and modulate capacity, among other options. Our machines support online accessing as a standard feature, enabling ultra-fast remote support. Production data recording is also standard for all machines and modules. Data recording can be expanded with great specificity based on your requirements, affording even greater efficiency while opening up the possibility of digitalizing all processes. Complex data can be documented and evaluated, going beyond standard data recording.

Open connectivity

It is very important to us to offer flexibility and needs-based adjustment options. That's why we provide open connectivity, implementing the OPC UA standard. Instead of a closed system, connection to superordinate IT systems is possible in order to transfer data. This allows easy integration of our machines into your existing machine network so you can systematically digitalize all finishing processes.

Dashboards

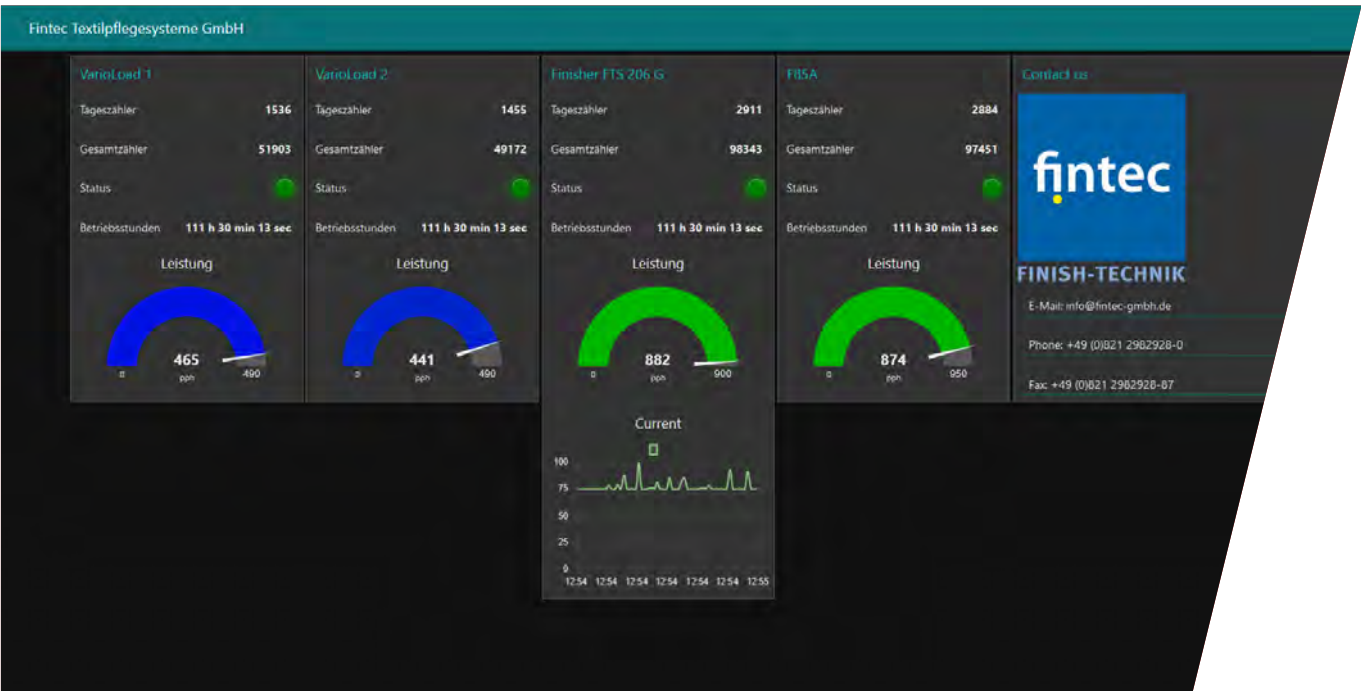
Key machine metrics such as OEE (Overall Equipment Effectiveness) can be displayed on dashboards, heightening productivity.

Data logging & storage

The data logging & storage function allows you to track trends in specific process parameters, saving this data for offline analysis. In addition to the many standard parameters, special desired metrics can be tracked, subject to coordination.

Logged data can be evaluated either manually on a PC via external USB data carrier or automatically with results display on the dashboard.

Integratable, variable technology. Tailored to meet your needs.



Preventive maintenance

This option is provided to avoid and minimize machine downtime due to the failure of individual components. Wearing parts are monitored as to when they are nearing pre-configured warning thresholds, such as the end of their projected useful life. When such a threshold is reached, a reminder is sent to arrange for component replacement or maintenance.

Other options include local notification via pop-up on the terminal of the respective machine and e-mail notification to a specified e-mail address when a specific predefined event occurs.

Automate manual activities: Increase productivity

Your benefits

“Made in Germany” quality and a host of other advantages

Fintec is the only German supplier specialized in the finishing of washed laundry and rented textiles, offering system technologies that cover the entire dry-cleaning spectrum.

You benefit from our specialized expertise and unmatched technical know-how. Flat organizational structures and person-to-person relationships with customers are important features of our business; all of our responsible staff can be contacted directly.

Our customers can rely on us to competently advise them from the first step of the way to the last. This means trouble-free support, but also fast, reliable provision of replacement parts.

We cooperate with established technology partners. Manufacturing and assembly take place exclusively at our factory in Gersthofen, near Augsburg. All machines are individually tested and commissioned prior to delivery. Fintec machines can usually be integrated into existing systems from other manufacturers. So you can convert or retrofit your machine environment at any time, as needed.

We support open connectivity, so you don't have to exclusively use our system software.

We are all about continuous process optimization and further development of our machines, taking customer feedback particularly into account.

The operational concept for our machines is simple and intuitive, affording a great user experience. Customers very often tell us that our machines are very user-friendly in terms of both programming and operation. The array of visualization options supported adds tremendous value.



About the company

Our profile

Decades of experience in the development and building of laundry machines form the basis for strong relationships with customers. Obtaining competent advice is the first step in optimizing your process flows. Every single machine and complete system manufactured at our factory in Gersthofen is designed in close dialogue with our partners in the textile services industry. For our international customers, Augsburg is known as the home of solid finishing technology Made in Germany.

Technology development is a never-ending process. What is innovative today will be standard for future generations. Planning for the future in terms of investment thus requires business-relevant concepts that are financially affordable and will continue to work over the long term. Before investing in laundry technology, you need to be sure that the machines and systems you are considering can be flexibly adapted to business changes.

Fintec offers both integrative and additive system solutions that are flexibly adaptable to requirements and production conditions in the laundry business.

Thus experienced Fintec technicians install and commission these systems on-site.

As a family-run firm, we are committed to treating our employees warmly and with respect. We have to work together as a team to be effective and successful. The developers and specialists who design, build, install and commission Fintec technologies on-site are at the heart of what we do as a company. We thus recruit and train new technicians who not only understand our technologies but also grasp our company philosophy as well.



“Working together like a family forms a good basis for relationships of trust with customers – whom we remain focused on.”
Claudia Pollauf | CEO



We look forward to your inquiry!



Fintec Textilpflegesysteme GmbH

Daimlerstr. 7 | 86368 Gersthofen | Germany

Phone: +49 (0)821 / 29 82 928-0 | Fax: +49 (0)821 / 29 82 928-87

Email: info@fintec-gmbh.de | Web: www.fintec-gmbh.de