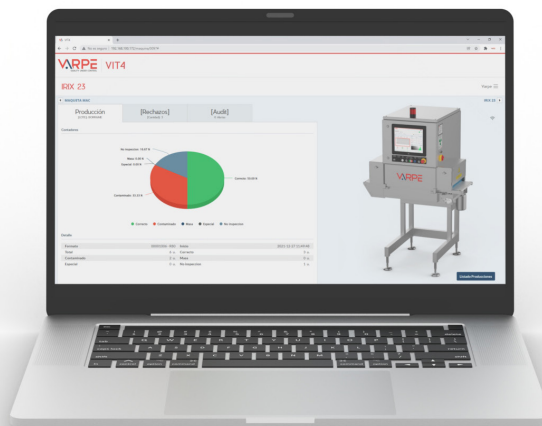


WHAT IS VIT4?

All your equipment controlled from one **single place**.

VIT4 is software designed to **store** and **manage** the data generated by Varpe equipment during production. It is an intuitive and friendly tool that distributes the information in a clear and schematic way. In addition, it adapts to the technical and analytical needs of the client and its frequent users.



REAL-TIME DATA

It shows real-time information on the status of the connected machines and the production in progress. It has graphics for quick visualization.



CONSOLIDATED PRODUCTION DATA

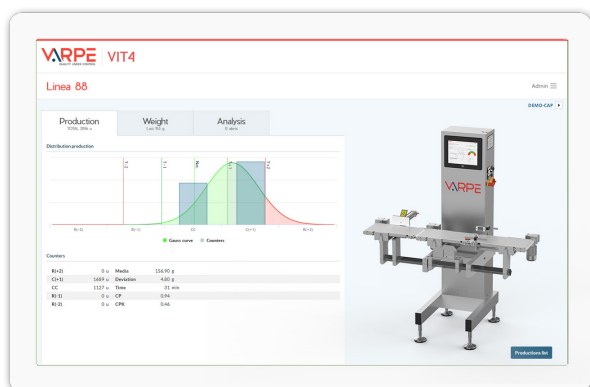
It stores the data that the Varpe machines have generated and displays them in an orderly manner, allowing subsequent analysis through the creation of reports.



FUTURE FORECASTS

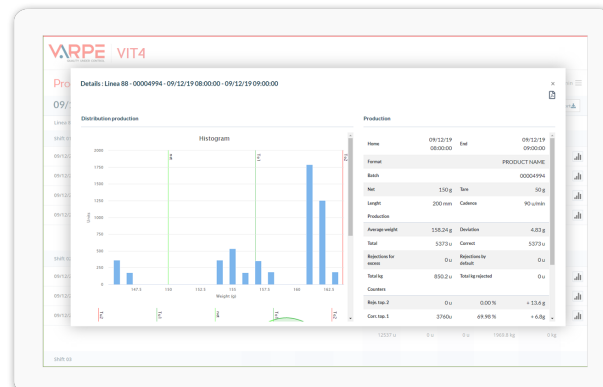
The system gives notices about future events, such as upcoming maintenance for a better organization of production.

VIT4 FUNCTIONALITIES



RANGE OF DATA

High availability of data: level counters, average weight, deviation, productivity and current format data, production graphs and histograms, etc.



REPORTING AND DATA EXPORT

Complete reports of closed productions: production data, rejects, levels, formats and visual graphics. Easy export of all data by .csv.



SOFTWARE VIT4

VIT4 SOFTWARE SERVICES

VIEWER
BASIC PLAN

ADVANCE
ADVANCED PLAN

MASTER
PREMIUM PLAN

	Free	Advanced	Complete
Statistical data on current production (counters)	✓	✓	✓
Current production graphs	✓	✓	✓
Statistical data of consolidated productions (counters)	✓	✓	✓
Consolidated production graphs	✓	✓	✓
List of consolidated productions	✓	✓	✓
Export of consolidated productions	✗	✓	✓
Data, graphs and list of individual weights (CP)	✗	✗	✓
Rejected images data (RX)	✗	✗	✓
Personalisation with logo	✗	✓	✓
Audit-trail (audit) of last movements (100 records)	✗	✓	✓
Historical audit-trail (audit)	✗	✗	✓
Personalisation of production data list	✗	✗	✓
Preventative maintenance alerts	✗	✗	✓
Number of VIT4 users under login	-	3	unlimited
VIT4 user permissions management	default	default	configurable
Format settings	✗	✗	✓
Configuration of machines	✗	✗	✓
Configuration of machine users	✗	✗	✓
Direct communication - RESTful API	✗	✗	✓



DO YOU NEED SOMETHING DIFFERENT?

TAILOR-MADE SOFTWARE

Conceived and **designed** to grow with your **needs**.

Varpe offers customisation of VIT4 to suit the customer's needs.

Contact your manager for customised software.