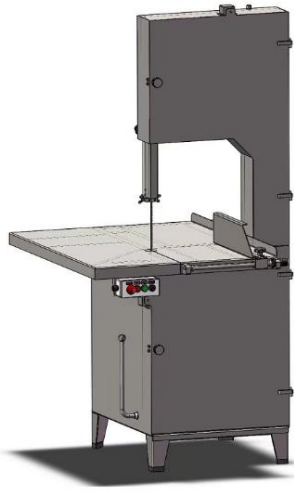


## BONE SAW MACHINE INSTRUCTION

### 1. Structure & parameters



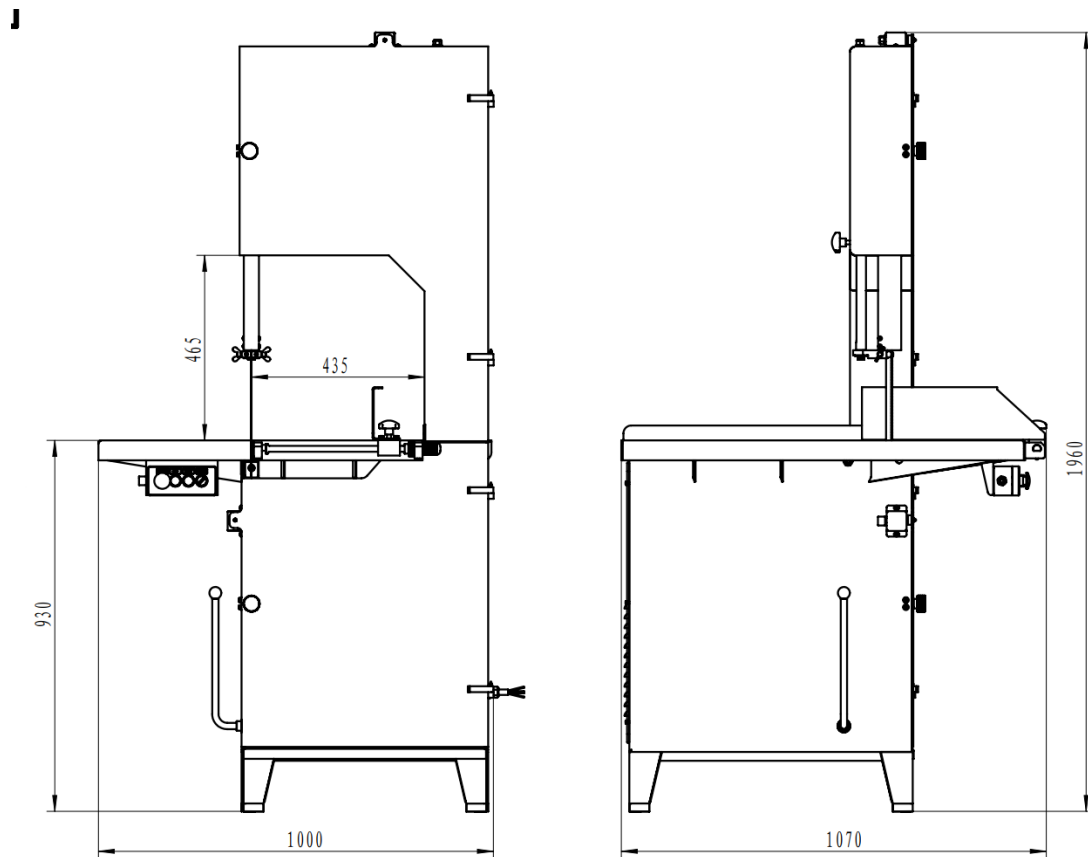
Bone saw machine

ModelNo.:HB-500A  
Voltage:380V/400V  
Material:stainless steel SUS304  
Saw size:3600mm  
Power:1.5W/3KW  
Speed:1450/min  
Packing size:1070\*1000\*1960mm  
Weight:250KG  
Cutting height :460mm  
Desktop size:820\*1015mm  
Current:7.2A



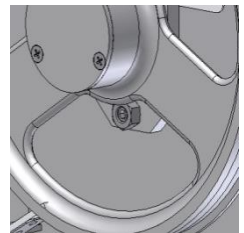
Made in China  
Hebei Qiqiang Metal Products Co., Ltd.

### 2. Detail & Dimensions



### 3. Installation and debugging

- 1.Machines must be placed on horizontal ground
- 2.Open the door of the box and set the saw belt on the belt wheel
- 3.Tension saw belt. Turn the top handle of the machine, adjust the tension of the saw belt, and adjust it to the sawbone without slipping. Too tight affects the life of saws, too loose can not work properly.
- 4.Move the wheel with your hand to check whether the saw blade is smooth. If the saw blade is shifted out of the belt, the professional tool can be used to turn the fine adjustment screw clockwise. If the saw blade is shifted inside the wheel, the professional tool can be used to twist the fine screw with counterclockwise until the saw blade is running smoothly.
- 5.Close the box door machine to start normally.



**Fine adjustment**

### 4. Operating instructions

- 1.Clean the machine before use, check whether the power supply voltage is conform to specified requirements, the machine requires the use of a short circuit and earth leakage protection switch power supply, power supply wiring should be solid and reliable, and the power supply socket with a firm shall be grounded.
- 2.Adjust the thickness baffle, turn on the power, start the button, check the operation condition of the equipment.
- 3.Wear wire gloves (random without, can be purchased on the market), the left hand pushed the handle, the right hand to the saw meat, even, straight forward slowly push, when the saw small pieces of meat should be used in an indirect direction.
- 4.It is forbidden to push with the hand directly.
- 5.Turn the machine on and keep the door open, and the tip of the teeth is pointing out, tightening the saw belt.
- 6.Keep your hands away from the saw belt in order to avoid danger.
- 7.Check whether the machine is reliably grounded.

8. Operate carefully, pay attention to safety, cut off power when equipment is abnormal, inform maintenance personnel.

9. Turn off the machine after use, unplug the power supply, and clean the machine in time to avoid breeding bacteria. (note: this machine cannot be washed with water directly).

## **5. Notice:**

1. Avoid places where children often appear.

2. When the machine is in operation, the hand should not be near the saw belt.

3. Do not open the hood when the machine is running.

4. Do not flush the machine directly with water.

5. If the power cord is damaged, please be sure to replace the professional technician in time to avoid damage.

6. Non-operator, no operating machine.

7. Correct cleaning machine.