

# SPECIFICATIONS

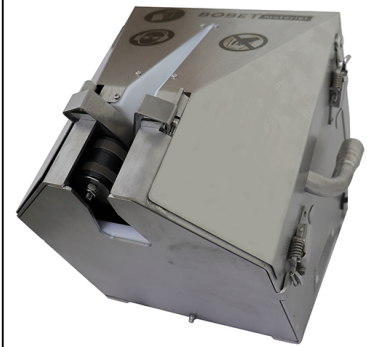
**ARTICLE**

Designation : **B SHARP grinding sharpener**

Code bobet : **19939**

Selling Unit : **Unit**

Non-contractual pictures

**CHARACTERISTICS**

The B SHARP grinding sharpener is a device which enables to sharpen precisely the manual knives blades without any adjustment. Its powerful motor as well as abrasive belts ensure a precise and regular sharpening. The belts can be removed easily without any tool. The sharpener requires very little maintenance due to its sleek design.

- Possible dust extraction thanks to a vacuum cleaner

**PRODUCT HIGHLIGHTS :**

- Sturdy frame in stainless steel 304L
- Quick and easy use (patented principle)
- Blade sharpening in convex shape for better performance overtime
- Inclined band for a natural integration of the knife (natural position of the wrist)
- No adjustment of belts sharpening angle
- Replacement of belts without any tool, easy and quick
- Dust extraction system through a KARCHER vacuum cleaner 30L NT30/1 Tact separately sold - BOBET code 24000

**CHARACTERISTICS :**

- Overall dimensions : Length 410 x width 300 x height 350 mm
- Weight : 24 kg
- Sound level : 80 dB without suction and 96 dB with suction

**ELECTRICAL CHARACTERISTICS :**

- Motor power : 0.55 kW
- Motor voltage : 230V single-phase
- Frequency : 50 Hz
- Protection index : IP 20

- Rotation speed : 280 rpm at 50Hz

SPARE PARTS : (see last page)

Sharpening belts : code 19950 (sold by 3)

STANDARDS :

The B SHARP grinding sharpener is in compliance with hygiene and safety regulations with the rules that can be applied :

- the directive 2006/42/CE and national regulations transposing it
- Electromagnetic compatibility 2014/30/CE

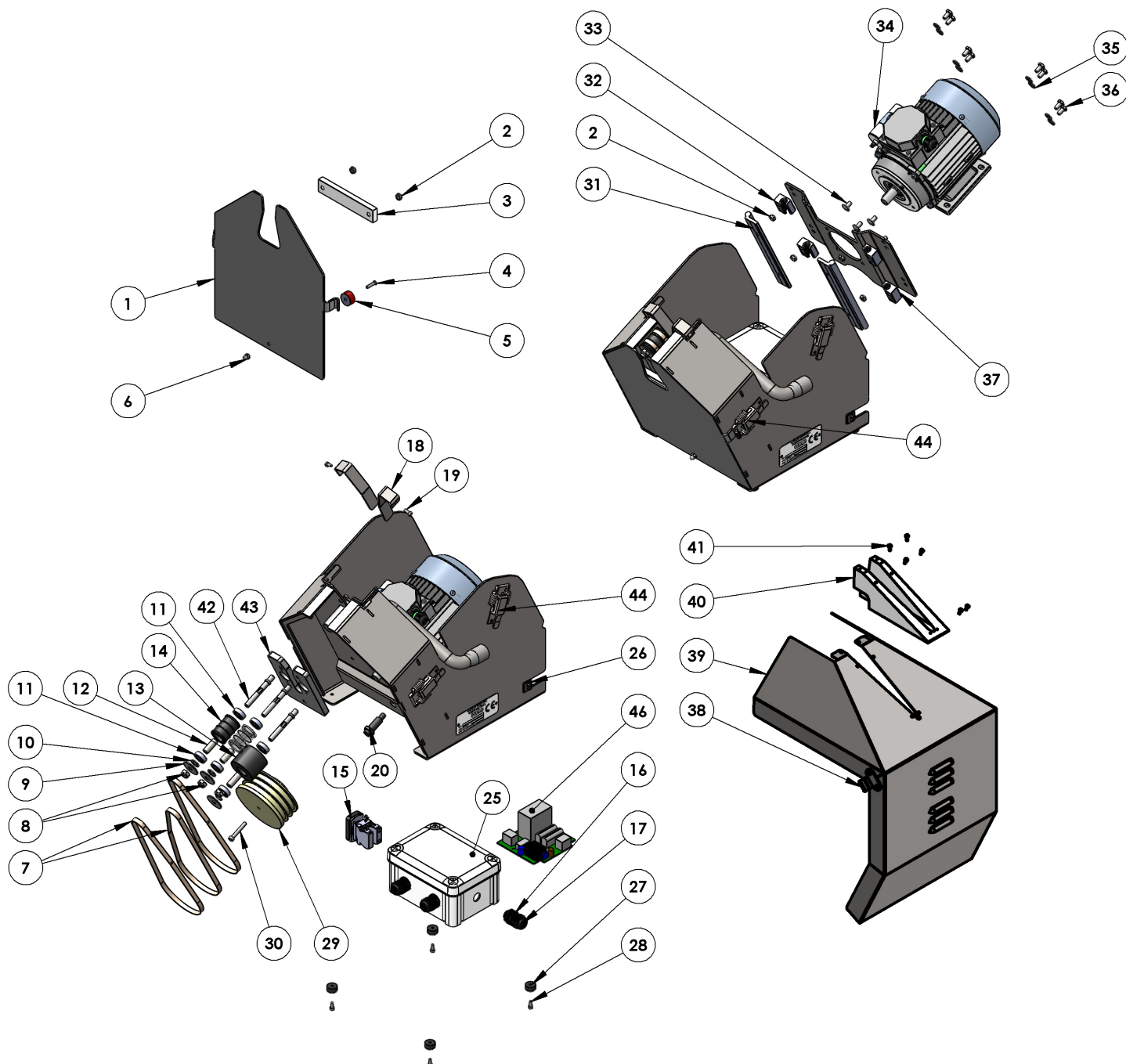
N.B. : Videos of use and maintenance are available on our website [www.bobet-materiel.com](http://www.bobet-materiel.com)

ALIMENTARITY :

To ensure durability, our products are manufactured in austenitic stainless steel (food grade approved), standard AISI 1.4307 (304L).

Manufactured in our own Production Department under protected atmosphere and in accordance with the welding process "T.I.G".





REPÈRE	DESIGNATION	QUANTITE	CODE	REPÈRE	DESIGNATION	QUANTITE	CODE
1	Façade	1	*	26	Serre câble	1	19969
2	Ecrou frein M6	10	2374	27	Pied plastique	4	19959
3	Protection de lame	1	70027	28	Vis CHC M4 x 10	4	2593
4	Vis TFHC M5 x 20	1	2662	29	Poulie	1	####
5	Aimant cylindrique	1	19962	30	Vis CHC M5 x 30	1	2606
6	Ecrou borgne M5	1	2302	31	Rail de guidage	2	19946
7	Bande abrasive	3	19950	32	Patin O1-10 LL	2	19948
8	Ecrou frein M8	3	2375	33	Vis TRL M6 x 12	4	5785
9	Rondelle extra large D.8	3	2961	34	Moteur	1	70007
10	Rondelle plate D.8	3	2324	35	Rondelle éventail D.6	8	2348
11	Roulement 5608	6	19960	36	Vis TH M6 x 12	8	3706
12	Entretoise	3	19970	37	Patin O1-10	2	19947
13	Galet excentré	1	19943	38	Crochet à grenouillère	2	19480
14	Galet	2	19942	39	Carter	1	*
15	Bouton double touche	1	19953	40	Guide arrière	1	19945
16	Presse étoupe noir	3	19958	41	Vis à tôle 2.9 x 9.5	6	17071
17	Contre écrou de presse étoupe	3	19952	42	Axe de galet	3	19125
18	Guide lame	2	13901	43	Semelle de fixation	1	19127
19	Vis CHC M4 x 10	2	2593	44	Grenouillère à ressort	4	19098
20	Détecteur de proximité magnétique	1	19961	45	Rivet D. 4 x 10	6	18615
25	Boîtier	1	19967	46	Carte de commande	1	70214