

TheiaVu® WD-300

WIPE-DOWN VISION MEASUREMENT SYSTEM FOR MEAT & POULTRY PROCESSORS



Protein-Tailored Offline Vision Measurement to Meet Sanitary & Operational Demands of Meat & Poultry Processing

OVERVIEW

The TheiaVu® WD-300 is KPM Analytics' answer for meat & poultry packers and processors seeking a better way to enhance their routine product quality checks. Equipped with measura® 4 Software and the measuraAI™ module, it assists quality control professionals by obtaining more precise and repeatable product measurement data to improve their production processes.

The TheiaVu® WD-300 combines the measurements of manual tools (calipers, color charts, etc.) into an all-in-one offline solution. This helps companies develop stronger standards for product quality by quantifying product features that are difficult or impossible to measure accurately manually.

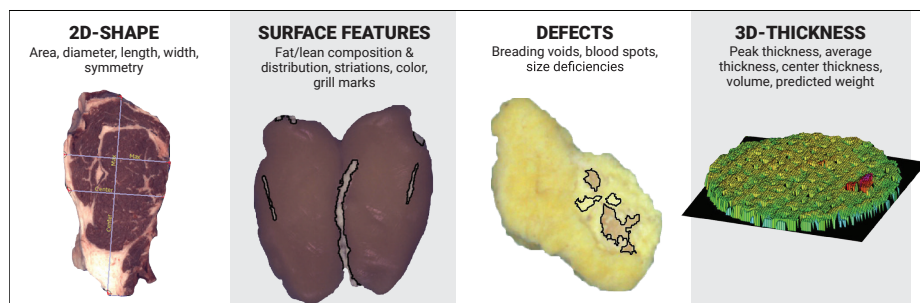
Additionally, the TheiaVu® WD-300 is a proper at-line quality assurance tool meeting the sanitary requirements of meat & poultry processing plants.

APPLICATIONS

Used in the lab or at-line, TheiaVu® WD-300 produces critical measurement data for final products or work-in-progress for quality and process control. They can be used for:

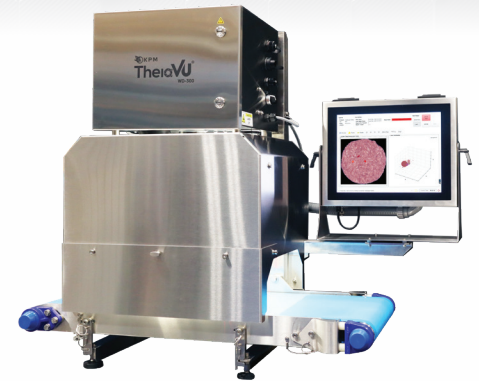
- Incoming inspection
- Product research & development
- Process improvement through product sampling
- Final product inspection
- Training & quality assurance program development

TYPICAL MEASUREMENTS



SANITATION & DURABILITY BUILT-IN

Meat processing plants benefit most from technologies deliberately designed and engineered for food processing environments, where daily cleaning processes involving harsh chemicals are established practices. The TheiaVu® WD-300 withstands rigorous sanitation protocols, allowing seamless integration into existing workflows without disruption.



THEIAVU® WD-300 FEATURES

- Sanitary design with easy-to-change conveyor belt makes it suitable for meat & poultry processing.
- Equipped with measura® 4 Software and the measuraAI™ module, offering a built-in library with 100+ product measurements and advanced tools for anomaly detection, defect analysis, and more.
- Obtain critical data on product features like color, consistency, fat distribution (marbling), breeding coverage, calculated weight, etc.
- Easy-to-use, IP69-rated operator interface with integrated PC.
- Interfaces with temperature gauge and scale (optional accessories).

THEIAVU® WD-300 BENEFITS

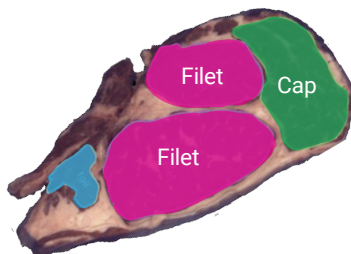
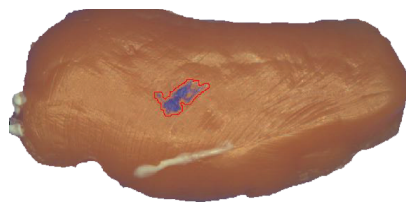
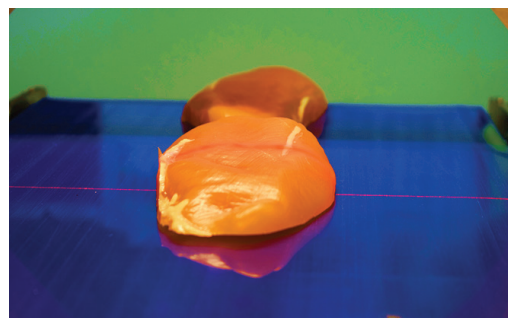
- **Objective Product Measurements:** Quantify specific product features that are difficult to measure manually.
- **Cost Savings:** Reduce time, labor, and waste from inaccurate product checks.
- **Superior Quality Control:** Product sampling at every stage of production provides teams QC teams with data they need to improve processes.
- **More Data:** Collect more measurements faster to better represent production.

POWERFUL ANALYSIS, INSPECTION & STATISTICAL CONTROL

measura[®]
SOFTWARE SOLUTIONS

POWERED BY
measuraAI[™]

The TheiaVu[®] WD-300 includes high-resolution cameras, lasers, lighting, and customized software to capture detailed images of meat or poultry products at various processing stages. With the measura[®] 4 Software and measuraAI[™] module, users can deploy advanced algorithms to analyze visual characteristics and compare data against predefined quality standards to identify variations, abnormalities, foreign materials, and other defects.



Product Type	Product Classification	Area	Average Height	Max Temp
Breaker	2023-05-15 13:36:30	886.14	9.29	47.18
Smoking	2023-05-15 13:36:35	894.1	9.91	48.7
Aligned	2023-05-15 13:36:40	923.01	9.33	48.79
Roasting	2023-05-15 13:36:45	888.04	9.32	48.06
measura_training_product_all_jan_18_19	2023-05-15 13:36:50	889.96	9.32	48.16
	2023-05-15 13:36:55	884.81	9.33	47.82
	2023-05-15 13:37:00	885.31	9.49	47.89
	2023-05-15 13:37:05	912.77	9.36	48.81
	2023-05-15 13:37:10	886.09	9.4	47.81
	2023-05-15 13:37:15	887.87	9.31	48.13
	2023-05-15 13:37:20	885.96	9.44	47.78
	2023-05-15 13:37:25	923.09	9.09	49.01

Anomaly Detection

Trained on your product to identify anomalies such as defects and foreign materials.

Advanced Feature Analysis

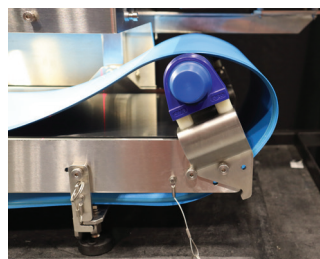
Obtain quantifiable measurements on specific product features that are vital for product grading.

Training and Data Handling Tools

Support deployment and configuration with a purpose-built setup and training environment.

ORDERING INFORMATION

Part Number	Description
300-30002-00	TheiaVu [®] WD-300 Vision Inspection System, easy-disconnect belt (width of 12" (300mm))
300-31000-01	Integrated weigh scale
300-21000-02	Temperature probe, 2" or 4" probe length



Easy to change and clean conveyor belt design

SPECIFICATIONS

Dimensions	45.5" L x 37.25" H x 28.5" W (1156mm L x 946mm H x 648mm W)
Weight	225 lbs (102 kg)
Conveyor Dimensions	36" L x 12" W (914mm L x 300mm W)
Cameras	Standard 2D color (~0.2mm/Pix) ; 3D profile
Lighting	Polarized LED light
Operating Temperature	40 °F to 77 °F (4 °C to 25 °C)
Environmental Humidity	5%-95%, non-condensing
Power	120VAC/60Hz/10A (220VAC/50Hz/5A optional)
Operating System	Windows 10 or above
Software	measura [®] 4 Software Suite

Temperature probe and weigh scale



KPM Analytics

8 Technology Drive | Westborough, MA 01581 USA
Phone: +1 774.399.0500
www.kpmanalytics.com | sales@kpmanalytics.com

