

+ TEMPERATURE SENSOR FOR PUSH-IN AND SCREW CONNECTION WITH M8 CONNECTOR -10°C TO 80°C



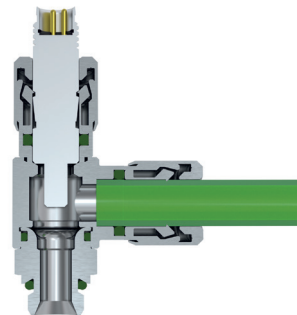
HIGHLIGHTS

- For measuring media in heating and cooling circuits of machines and systems
- For mounting in Eisele push-in and threaded fittings -> quick tool-free assembly and disassembly
- Safe and very compact electrical connection through M8 connector
- High protection class against the ingress of moisture, dust, and dirt
- Very high vibration resistance -> reliable and long-lasting operation.
- Very high process reliability through measurements at the relevant location



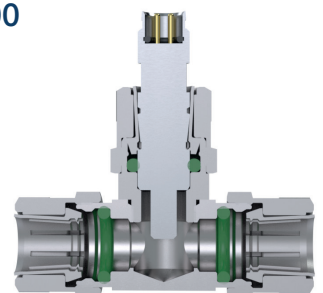
L-SCREW FITTING

EXAMPLE: 990-0206

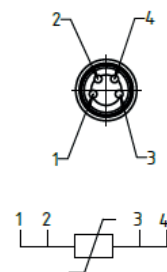
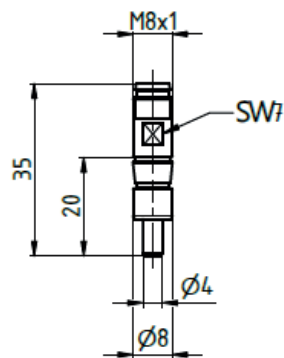
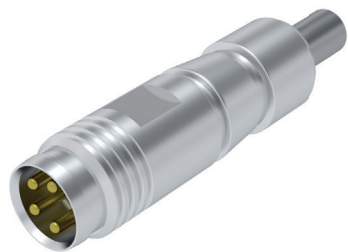


T-CONNECTION

EXAMPLE: VT4578-0600



SA2063-06



Anschlussbild M8

Technical data

Execution	Temperature sensor
Measurement range	-10°C to 80°C
Measurement medium	Water and aqueous liquids, non-aggressive gases
Immersion tube length	20 mm
Immersion tube diameter	4 mm
Process connection	EISELE push-in and screw connection in 8 mm
Nominal pressure	PN 16
Media temperature	-10°C bis 80°C
Ambient temperature	-10°C bis 80°C
Storage temperature	-10°C bis 80°C
Protection class EN 60629	IP65

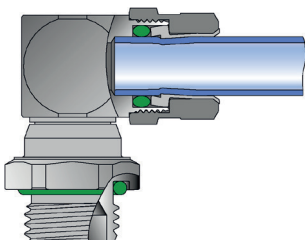
Electrical data

Measuring element	1 x Pt1000 / 4-wire
Measuring insert	Non-replaceable
Accuracy	Class B / $\pm(0.30 K + 0.005 \times T)$
Electrical connection	M8 connector, 4-pole

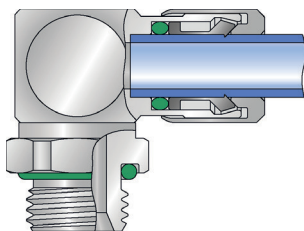
Material

Media-related	
Process connection	Stainless steel 1.4571
Protective conduit	Stainless steel 1.4571

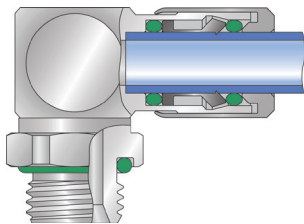
The temperature sensors can be integrated into our series!



2500/4500/5500



14/17/2600



14A/17A/2400

Illustrations not binding, subject to change,
no liability for errors and misprints – 10.24