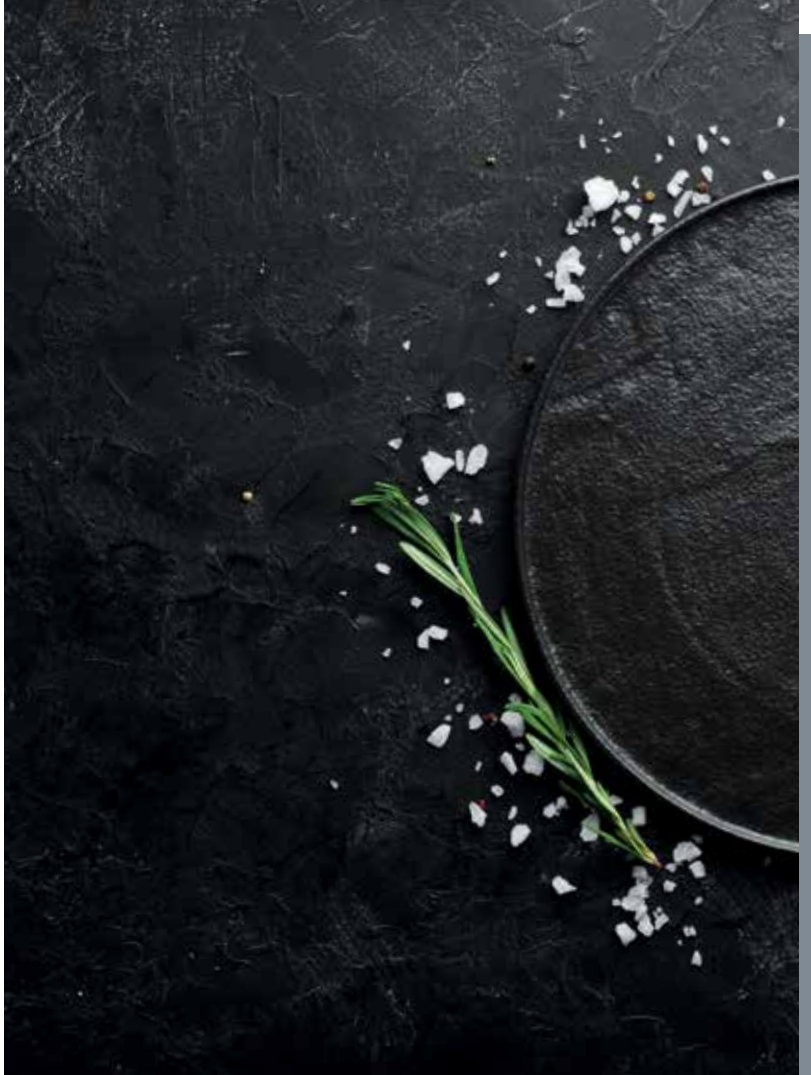


# PRODUCT CATALOGUE

---

# CONTENT

---



## **B CLIP SYSTEMS** A BECK brand

CLIP SYSTEMS is synonymous for high-quality clip and packaging products with the best price-performance ratio. Our comprehensive solutions are compatible with products from other manufacturers.

### **Application areas**

- Clipping meat and sausage products in artificial and natural casings
- Packaging poultry and cheese in plastic bags and films
- Packaging fruit and vegetables in nets and bags
- Sealing bags for live fish transport
- Packaging non-food products (chemicals, medications, pet food, and much more)





01

PRODUCT OVERVIEW ..... 04

02

ALUMINIUM CLIPS ..... 06

03

TABLE-TOP SINGLE CLIPPERS

BCS-50SC/175SC/200SC/700SC ..... 12

BCS-700SC-H ..... 14

04

TABLE-TOP DOUBLE CLIPPERS

BCS-200DC ..... 16

BCS-200DC-R..... 18

05

SEMI-AUTOMATIC DOUBLE CLIPPERS

BCS-200SM ..... 20

BCS-700SMD ..... 22

06

FULLY AUTOMATIC DOUBLE CLIPPERS

BCS-200AM ..... 24

BCS-700AM, AM-S, AM-XL ..... 26

07

PACKAGING SYSTEMS

BCS-PPT..... 30

BCS-TMS ..... 32

08

CLIPS PACKAGING AND ACCESSORIES ..... 34

# ALUMINIUM CLIPS

## PRODUCT OVERVIEW

Aluminum clips are available in all standard market sizes and a range of hardness grades. They are perfectly matched to our clippers, yet fully compatible with all common clipping machines from other manufacturers.

### Colours

Silver, red, blue, green, yellow, black and white

### Colour Options

Completely coated – the wire is completely coloured

Partially coloured – the clips are only coloured on the outside

### Versions

Reels, spools, strips

# 01



## CLIP MACHINES

All CLIP SYSTEMS clip machines are powered by compressed air. The devices are ergonomically designed and made from high-quality materials. Due to the predominant use of stainless steel, CLIP SYSTEMS machines are hygienic and particularly easy to clean.

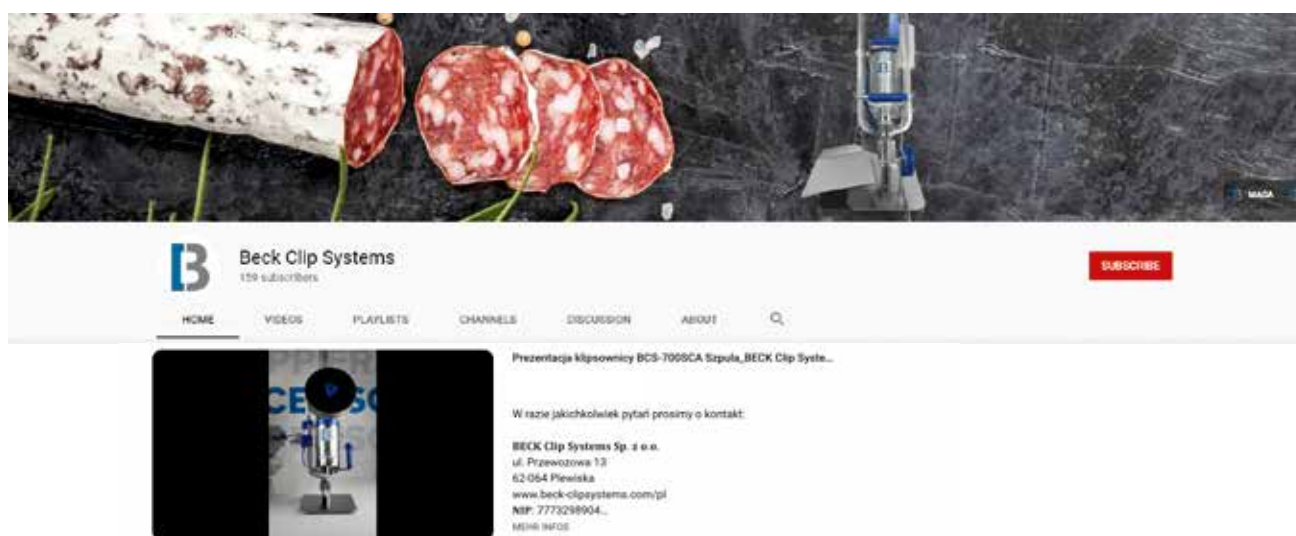
Choose the right product for your application from our product range

- Manual table-top clippers
- Semi-automatic double clippers
- Fully automatic double clippers



# CLIP SYSTEMS ON YOUTUBE

Discover engaging videos showcasing our extensive product range, including aluminium clips, clippers, and clip machines used in the food and meat processing industry, as well as the original MAGA® meat press. For more information, visit the CLIP SYSTEMS YouTube channel.



For detailed information about our clips and clippers, please contact us. We are happy to assist you.



**Technical Support**  
**Sales**

+48 503 401 305  
+48 690 001 721  
Mo - Fr | 7 am - 3 pm



**Product support**

sales.int@beck-clipsystems.com



**beck-clipsystems.com**



---

**02**

# **ALUMINIUM AT A GLANCE**

ALUMINIUM CLIPS

# CLIPS



## PRODUCT RANGE

- Ø from 1,72 to 3,40 mm | from 0.07 to 0.13"
- Inner dimension from 6,50 to 12,50 mm | from 0.25 to 0.50"

## COLOUR OPTIONS

- Completely coated – the clips are completely coloured
- Partially coated – the clips are only coloured on the outside

## SPECIFICATIONS

- Reels, strips or spools
- Different tensile strengths available
- Bright finish or coloured

Our portfolio comprises U-clips that are available in strips and on spools or reels. All CLIP SYSTEMS aluminium clips can be formed into flat clips or roll clips and feature strongly rounded and brush-finished ends to prevent any damage to the casings. The additional wax coating protects sensitive materials.



# OUR PORTFOLIO



## FLAT CLIPS

Are recommended for sensitive packaging materials, such as natural sausage casings. The rounded and brush-finished ends of the clip close softly without doing any harm to the material.



## ROLL CLIPS

Are especially suitable for robust packaging, such as artificial sausage casings and wherever an extremely leakproof closure is required, such as vacuum bags or packaging of liquids.

### SUITABLE FOR

Table-top single clippers BCS-50SC, BCS-175SC, BCS-200SC, BCS-700SC

Table-top single clipper BCS-700SC-H

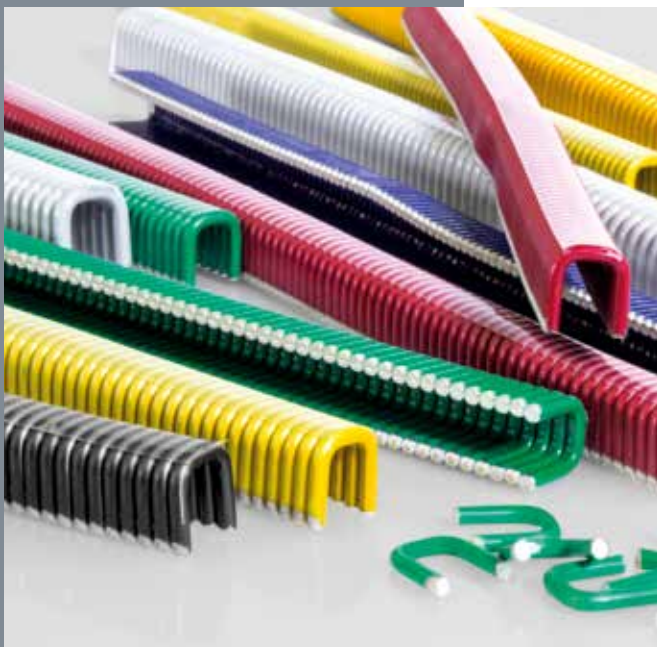
Table-top double clippers BCS-200DC, BCS-200DC-R

Semi-automatic double clipper BCS-200SM, BCS-700SMD

Fully automatic double clipper BCS-200AM

Fully automatic double clipper BCS-700AM, AM-S, AM-XL





## COLOUR CODE

Coloured clips allow batches to be identified visually for tracing purposes. The clips are available in seven different colours: silver, red, blue, green, yellow, black and white.



## GROOVED INNER SURFACE

Clips are available optionally with or without inside knurling / grooves for improved hold.



# CLIP- MACHINE

---



S



# TABLE-TOP SINGLE CLIPPERS BCS-50SC/175SC/200SC/700SC

The BCS-SC single clipper series is easy to set up, lightweight, and exceptionally reliable. Thanks to its innovative design and a stainless steel-coated cylinder, the devices are highly ergonomic, low-maintenance, and easy to clean. This new series meets the highest hygiene standards.

- Fixed knife to cut excess casing
- Handle for safe transport
- Adjustable clip closure

## OTHER VERSIONS

- Standard single clipper **BCS-SC**
- Single clipper with automatic trigger **BCS-SCA**
- Single clipper in horizontal version **BCS-SC-H**
- Single Clipper in horizontal version with automatic trigger **BCS-SCA-H**





### BCS-SC SERIES

Automatic cutter (left or right)



### AVAILABLE OPTIONS

- Pressure reducer
- Automatic trigger for bag closure
- Automatic clip feeder



## DEVICE SPECIFICATION

HEIGHT	WIDTH	LENGTH	WEIGHT
765 mm   30,12"	240 mm   9.45"	466 mm   18.34"	11.60 kg   25.57 lbs

**Operating pressure** max. 6 bar | max. 90 psi

**Air consumption** 4.20 L

## SUITABLE ALUMINIUM CLIPS

BCS-50SC	XK-EI, XK-FA, XK-HF, XK-IA (similar to K50 series)
BCS-175SC	XT-BHF, XT-CAA, XT-CFA (similar to T-200 series) XG-BHF, XG-CAA, XG-CFA (similar to G-175 series)
BCS-200SC	XE-CAA, XE-CBA, XE-CCA, XE-CDA, XE-CEA (similar to E-200 series)
BCS-700SC	XS-HDF, XS-HEA, XS-HEE, XS-HEH (similar to S-700 series)

# TABLE-TOP SINGLE CLIPPER BCS-700SC-H



The ideal tabletop single clipper for sealing liquids, soups, or ice cube packaging. Available with an optional ventilation system for oxygen dosing, ensuring the safe transport of live fish. Its compatibility with XS-HDF, XS-HEA, and XS-HEE clips (with dimensions similar to the S-700 series) ensures secure sealing of casings with varying material thicknesses.

- Adjustable clipper stand
- Fixed knife to cut excess casing
- Adjustable clip closure

## OTHER HORIZONTAL VERSIONS

- BCS-50SC-H
- BCS-50SCA-H
- BCS-175SC-H
- BCS-175SCA-H
- BCS-200SC-H
- BCS-200SCA-H
- BCS-700SCA-H



### AVAILABLE OPTIONS

- Pressure reducer
- Automatic trigger for bag closure
- Oxygen filling system



## DEVICE SPECIFICATION

HEIGHT	WIDTH	LENGTH	WEIGHT
1420 mm   55.90"	565 mm   22.24"	330 mm   19.99"	20,50 kg   44.09 lbs

**Operating pressure** max. 6 bar | max. 90 psi  
**Air consumption** 4.20 L

## SUITABLE ALUMINIUM CLIPS

BCS-700SC-H	XS-HDF, XS-HEA, XS-HEE (similar to S-700 series)
-------------	--

# TABLE-TOP DOUBLE CLIPPER BCS-200DC

The BCS-200DC tabletop double clipper is a powerful device for sealing artificial and natural casings in the caliber range of 25–100 mm (0.98–3.94"). The clipper is easy to operate, space-saving, and quickly ready for use. It is ideal for producing ring sausages and for packaging in nets.



- Hygienic thanks to rustproof stainless steel cylinder
- Automatically cuts portions to size
- Optional loop inserter and string dispenser available
- Space-saving and easy to operate
- Can be modularly upgraded to a semi-automatic double clipper





**QUICK AND VERSATILE**

The tabletop clipper is quick to set up and ready for immediate use. The device processes five clip dimensions, offering countless applications. Optionally, the double clipper can be equipped with an automatic loop inserter and thread dispenser.

**ACCESSORY FOR NET PACKAGING**

The device can be equipped with a special kit knife and short sheets for easy packing large products, such as hams in nets.



**DEVICE SPECIFICATION**

HEIGHT	WIDTH	LENGTH	WEIGHT
850 mm   33.46"	300 mm   11.81"	450 mm   17.72"	19.5 kg   42.99 lbs

Clip capacity	2 x 350 clips
Calibre	25 – 100 mm   0.98 – 3.94"
Operating pressure	max. 6 bar   max. 90 psi
Air consumption	4.20 L
per stroke	Performance at 90 psi   6.2 bar

**SUITABLE ALUMINIUM CLIPS**

BCS-200DC	XE-CAA, XE-CBA, XE-CCA, XE-CDA, XE-CEA (similar to E-200 series)
-----------	--

# TABLE-TOP DOUBLE CLIPPER BCS-200DC-R

The BCS-200DC-R swivel tabletop double clipper is a powerful device for sealing artificial and natural casings in the caliber range of 25–100 mm (0.98–3.94"). The clipper is easy to operate, space-saving, and quickly ready for use. It is ideal for producing ring sausages and for packaging in nets.

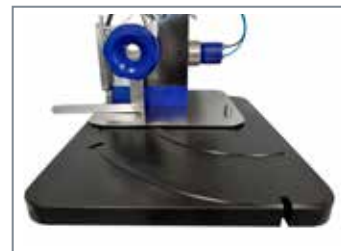
- Pivotal 60° and 90°
- Moveable casing brake
- Automatically cuts portions to size
- Modular design allows upgrading to a semi-automatic double clipper





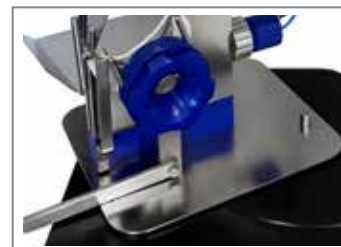
### PIVOTABLE 60°/90°

The clipper is pivotable for easier loading of the filling tube and can then be locked back into place in the pre-set operating position.



### AVAILABLE OPTIONS

Optionally, the BCS-200DC-R can be equipped with a string dispenser, a special blade for netting and different filling tubes and casing brakes.



## DEVICE SPECIFICATION

HEIGHT	WIDTH	LENGTH	WEIGHT
910 mm   35.83"	510 mm   20.08"	660 mm   25.98"	30 kg   66.14 lbs

<b>Clip capacity</b>	2 x 350 clips
<b>Calibre</b>	25 – 100 mm   0.98 – 3.94"
<b>Operating pressure</b>	max. 6 bar   max. 90 psi
<b>Air consumption</b>	5.00 L
<b>per stroke</b>	Performance at 90 psi   6.2 bar

## SUITABLE ALUMINIUM CLIPS

BCS-200DC-R

XE-CAA, XE-CBA, XE-CCA, XE-CDA, XE-CEA (similar to E-200 series)

# DOUBLE CLIPPER BCS-200SM

The semi-automatic BCS-200SM double clipper can be connected mechanically to any filler. It is especially suitable for fastening sausage products in a calibre range of 25 to 100 mm (0.98 to 3.94").

- Compressed air operation – no electrical power required
- Extremely corrosion-proof, stainless steel and plastic construction
- The undercarriage is mobile and height-adjustable
- Pneumatic casing brake for even filling
- Precise portioning
- Automatic cutting between portions





**AUTOMATIC FILLER CONTROL**

A controller on the clipper regulates synchronous operation with the filler. The filler determines the portion size with the exact weight required.

**PIVOTABLE CLIP HEAD**

The clip head is pivotable by 90° for easier loading of the filling tube.

**OPTIONAL LOOP INSERTER**

At the press of a button, a loop is inserted before the clipping process. The loop feed is available as an optional accessory.



**DEVICE SPECIFICATION**

HEIGHT	WIDTH	LENGTH	WEIGHT
1800 mm   70.87"	1200 mm   47.24"	760 mm   29.92"	53 kg   116.85 lbs

Clip capacity	2 x 350 clips
Calibre	25 – 100 mm   0.98 – 3.94"
Operating pressure	max. 6 bar   max. 90 psi
Air consumption	5.00 L
per operation	Performance at 58 psi   4 bar

**SUITABLE ALUMINIUM CLIPS**

BCS-200SM	XE-CAA, XE-CBA, XE-CCA, XE-CDA, XE-CEA (similar to E-200 series)
-----------	--

# DOUBLE CLIPPER BCS-700SMD

## NEW

The semi-automatic BCS-700SMD double clipper features an integrated touch control panel and can be mechanically coupled with any filler. The device is especially suitable for sealing sausage products in the caliber range of 30 – 140 mm (1.18 – 5.51").

- Wider main plates – longer casing ends
- Intuitive touch control panel
- Portion counter (resettable)
- Adjustable incision counter
- Optional loop feeder with 22/100 loops
- Optional string dispenser
- Rotatable ergonomic handle
- Maximum jaw opening adjustable: Smaller calibres can also be cut





### TOUCH CONTROL PANEL

With its fully integrated touch panel, the BCS-700SMD is intuitive to operate. Service checks can be performed easily. The control panel allows users to monitor the number of portions produced and adjust key operating parameters.

### OPTIONAL STRING DISPENSER

An optional automatic string dispenser can be integrated into the system.

### OPTIONAL LOOP FEEDER

A loop is placed before the clipping process at the push of a button. The loop feeder is available as an optional accessory.



## DEVICE SPECIFICATION

HEIGHT	WIDTH	LENGTH	WEIGHT
1750 mm   68,89"	1180 mm   46.45"	800 mm   31.94"	95 – 100 kg   209.44 – 220.46 lbs

<b>Clip capacity</b>	2 x 350 Clips
<b>Calibre</b>	30 – 140 mm   1.18 – 5.51"
<b>Operating pressure</b>	max. 6 bar   max. 90 psi
<b>Air consumption</b>	5.00 L
<b>per operation</b>	Performance at 88 psi   5 bar

## SUITABLE ALUMINIUM CLIPS

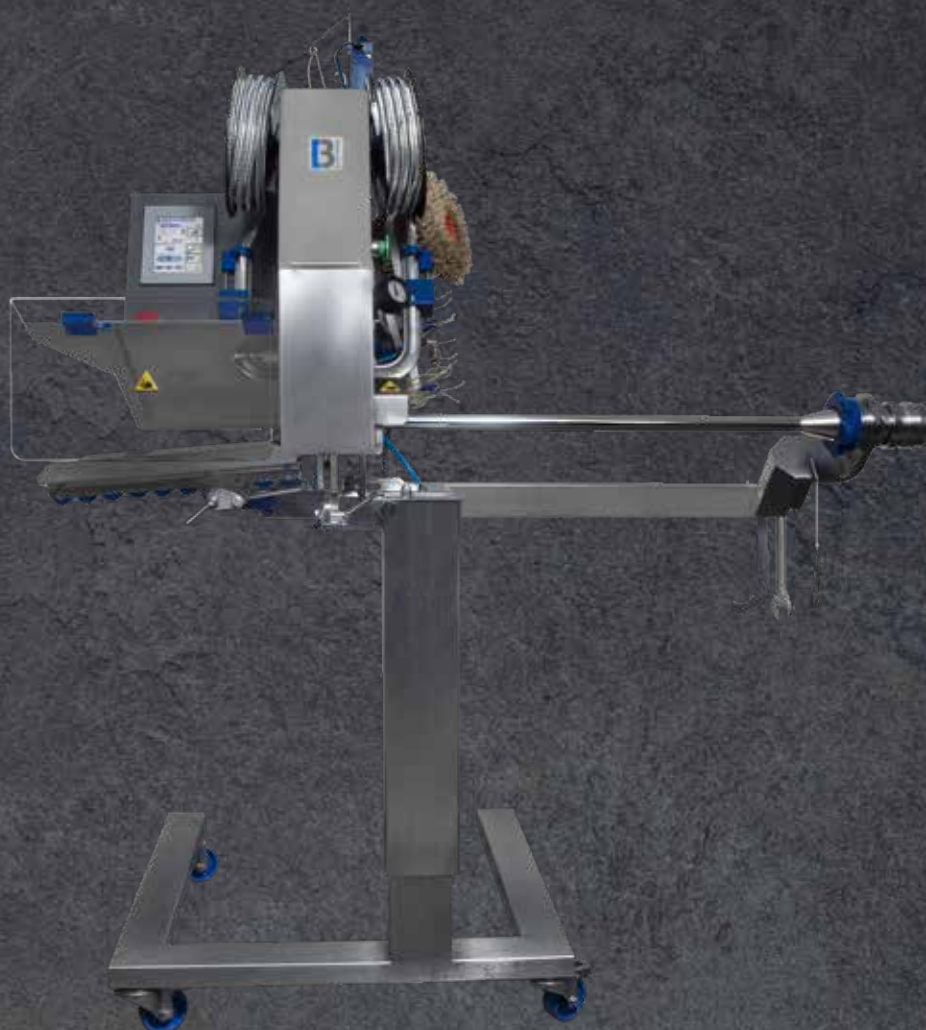
BCS-700SMD	XS-HDF, XS-HEA, XS-HEE (similar to E-700 series)
------------	--

# DOUBLE CLIPPER BCS-200AM

The BCS-200AM is a fully automatic double clipper that can be connected to any filler. It is specifically designed for clips in the caliber range of 25 to 100 mm (0.98 to 3.94"). This machine is ideal for a wide range of packaging requirements in both commercial and industrial settings — perfect for producing small to medium-sized products.



- Working with XE-CAA, XE-CBA, XE-CCA, XE-CDA, XE-CEA (dimensions similar to E-200 series) clip series on spools
- Automatic filling, clipping and cutting
- Mobile, height-adjustable undercarriage





**TOUCH CONTROL PANEL**

With its fully integrated touch panel, the BCS-200AM is intuitive to operate. Service checks can be performed easily. The control panel allows users to monitor the number of portions produced and adjust key operating parameters.



**SEAMLESS OUTFEED**

The roller support plate ensures gentle outfeed of the finished portions.



**DEVICE SPECIFICATION**

HEIGHT	WIDTH	LENGTH	WEIGHT
1700 mm   66.93"	1200 mm   47.24" 1570 mm   61.81" - XL 1770 mm   69.68" - XXL	800 mm   31.50"	115 kg   253.53 lbs

Clip capacity	4500 – 6500   spool
Calibre	25 – 100 mm   0.98 – 3.94"
Operating pressure	max. 6 bar   max. 90 psi
Air consumption	10.00 L
per stroke	Performance at 58 psi   4 bar

**SUITABLE ALUMINIUM CLIPS**

BCS-200AM	XE-CAA, XE-CBA, XE-CCA, XE-CDA, XE-CEA (similar to E-200 series) - spools
-----------	---

# DOUBLE CLIPPER BCS-700AM

The fully automatic BCS-700AM double clipper can be mechanically coupled with any filler. A control unit on the clipper regulates synchronised operation with the filler, ensuring precise, weight-based portioning. The clipping machine is perfectly suited for sealing all types of casings in the caliber range of 30 – 140 mm (1.18 – 5.51 inches). An ideal solution for production facilities of all kinds.

- Automatic filling, clipping and cutting
- Precise portioning
- Loop feeder as a standard equipment
- Mobile, height-adjustable undercarriage



## AVAILABLE VARIANTS



### BCS-700AM-S

- Automatic filling, clipping and cutting
- Precise portioning
- For clips on strips
- No automatic clip feeder
- Loop feeder as an optional equipment
- Mobile, height-adjustable undercarriage



### BCS-700AM-XL

- Automatic filling, clipping and cutting
- Additional edition with 83 cm long filing tube
- Allows to reduce downtime needed to change casings by over 50 %
- Loop feeder as an optional equipment
- Mobile height-adjustable undercarriage



**TOUCH CONTROL PANEL**

With its fully integrated touch panel, the BCS-700AM is intuitive to operate. Service checks can be performed easily. The control panel allows users to monitor the number of portions produced and adjust key operating parameters.



**SEAMLESS OUTFEED**

The roller support plate ensures gentle outfeed of the finished portions.



**DEVICE SPECIFICATION**

HEIGHT	WIDTH	LENGTH	WEIGHT
1700 mm   66.93"	1200 mm   47.24" 1570 mm   61.81" - XL 1770 mm   69.68" - XXL	800 mm   31.50"	115 kg   253.53 lbs

Clip capacity	2700 – 3600 clips
Calibre	30 – 140 mm   1.18 – 5.51"
Operating pressure	max. 6 bar   max. 90 psi
Air consumption	11.00 L
per operation	Performnce at 58 psi   4 bar

**SUITABLE ALUMINIUM CLIPS**

BSC-700AM	XS-HDF, XS-HEA, XS-HEE (similar to S-700 series)
-----------	--

# **PACKAGING SYSTEMS**

---







# POULTRY VACUUM PACKING TABLE BCS-PPT



This station is ideal for vacuum-sealing a variety of food products such as fillings, meat, cheese, and agricultural goods. With the BCS-PPT, air is removed from protein and natural casings, bags, and many other synthetic packaging materials sealed with aluminum clips.

The vacuum packaging table is specifically designed for use with CLIP SYSTEMS tabletop single and double clippers but can also be combined with other clipper models. The flexible BCS-PPT system is perfectly suited for small-scale production facilities, butcher shops, dairies, bakeries, and agricultural businesses.

- Space-saving design
- Sterile packaging with maximum material efficiency
- Advanced safety features
- Ergonomic, practical, and sturdy



**CYLINDRICAL NOZZLE**

The nozzle is used to extract air from different packages.



**AIR SUPPLY**

With pneumatic hose



**DEVICE SPECIFICATION**

HEIGHT	WIDTH	LENGTH	WEIGHT
950 mm   37,40"	650 mm   25.59"	1210 mm   47.63"	38 kg   83.77 lbs

<b>Operating pressure</b>	Max. 7 bar   max. 100 psi
<b>Operating temperature</b>	10 – 80°C
<b>Efficiency</b>	up to 20 cycles/min (depends on the device)
<b>Noise level</b>	90 - 98 dB

**SUITABLE BCS-CLIPPERS**

TABLE-TOP SINGLE CLIPPER	BCS-50SC, BCS-50SCA, BCS-175SC, BCS-175SCA, BCS-200SC, BCS-200SCA, BCS-700SC, BCS-700SCA
TABLE-TOP DOUBLE CLIPPER	BCS-200DC, BCS-200DC-R

# END LINE MARKING SYSTEM BCS-TMS



This universal device for the food industry is designed as end-of-line equipment: it enables quick and easy printing of product casings. Our BCS marking system can be directly connected to a clipper, or, when installed separately, it prints casings from multiple production lines.

- Precise print on protein- and natural casings
- Customised labeling technology
- Universal and efficient due to various customisation options
- Compatible with printers from various manufacturers
- Resistant to moisture and temperature fluctuations
- Easy integration into other production systems



### LASER PRINTER

Choose the suitable printer according to your individual requirements: Our system is compatible with various printer types and manufacturers.



### CONVEYOR SYSTEM

The printed end products are transported on a conveyor belt.



## DEVICE SPECIFICATION

HEIGHT	WIDTH	LENGTH	WEIGHT
Adjustable	800 mm   31.49"	1050 mm   41.33"	90 kg   198.41 lbs

Power supply	230V 50Hz or 120V 60Hz
Power	0,5 kW
Adjustable Sides	160 mm (positioning the product, max diameter of the casing)
Inclination angle of the belt	0 – 10° adjustable
Belt movement	0 – 55m/min adjustable setting
Full mobility	4 swivel castors with possibility of blocking

# CLIPS PACKAGING AND ACCESSORIES



CLIP SYSTEMS stick clips are packaged in white boxes featuring CLIP SYSTEMS branding. Each inner box is coated with a transparent wax layer to protect against moisture. A master carton in the CLIP SYSTEMS design holds four of these boxes.

In addition to our wide selection of aluminium clips and clippers, we also offer a matching range of loops and cords in all standard designs and colours — providing our customers with a complete system for sealing and packaging.



## LOOPS, OL MINOR 44/120

Colour	white, beige
Pieces/Spool	2 M
Spools/Master Box	16 p. /32 M



## LOOPS, S22/100 AND HGS 25/100

Colour	white, beige
Pieces/Spool	3 M or 4 M
Spools/Master Box	16 p. /48 M



## CORDS TEB-MTS 30/120

Colour	white
Pieces/Spool	4 M
Spools/Master Box	8 p. /32 M



## CORDS JSS

Colour	green, red, blue, natural
Spools/Master Box	4 p.





**B CLIP SYSTEMS**  
A BECK brand

**RAIMUND BECK KG**  
Raimund-Beck-Strasse 1  
5270 Mauerkirchen | Austria

+43 7724 2111-0  
office@beck-clipsystems.com

beck-clipsystems.com