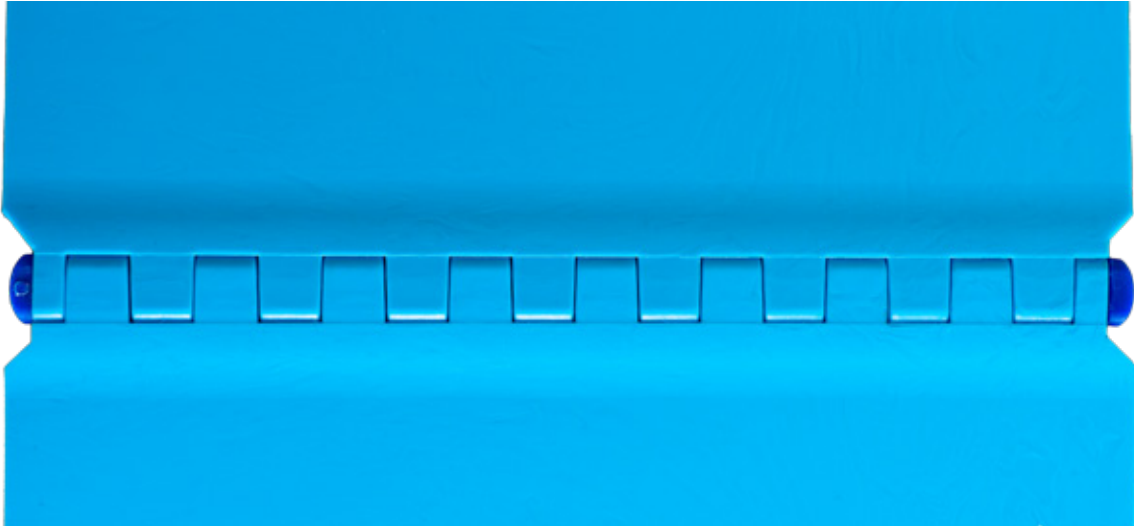




Twin/Lock® Fasteners

The new ultra-fast joining method !



Benefits:

- **Quick and easy manual assembly and disassembly:**

- Eliminates the cost of external belt fitting services.
- Significantly reduces production downtime.

- **Enhanced food hygiene and safety:**

- Facilitates enhanced hygiene and thorough cleaning.
- Eliminates the risk of pin loss.

- **High mechanical performance:**

- Higher traction strength over single pin types.
- Flexing and counter-flexing without Polygon effect.
- Improved compatibility with our DEL/CLEAN scrapers.

- **Compatible with the MAFDEL range of smooth or positively driven homogeneous belts:**

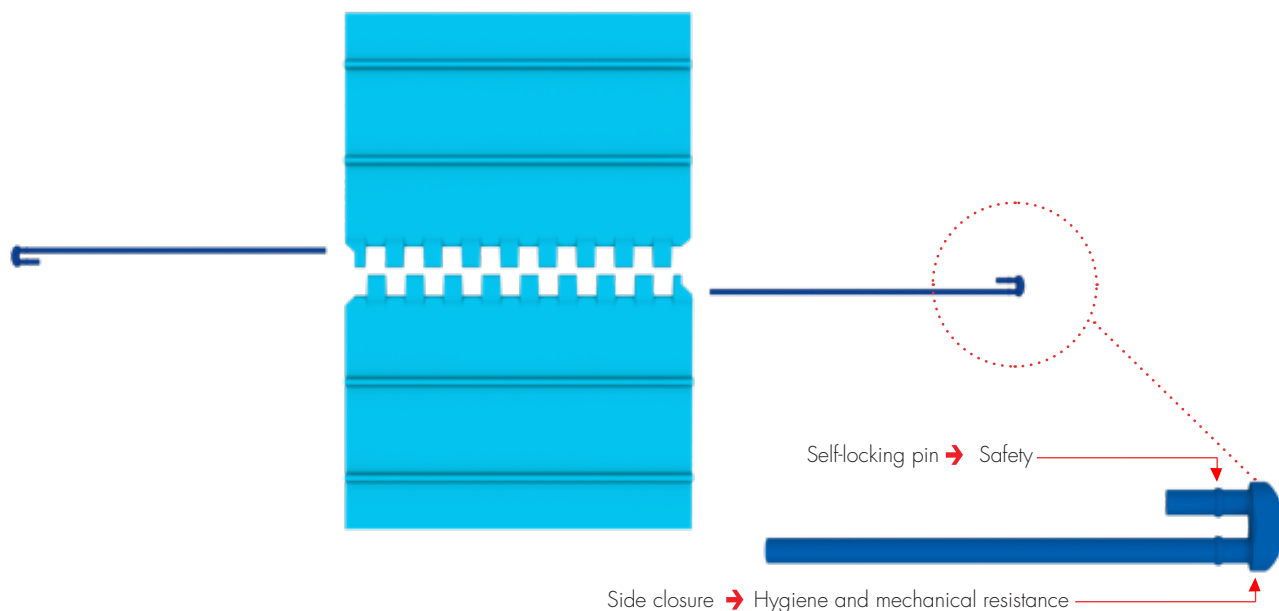
- Installation on belt using standard Mafdel tools.





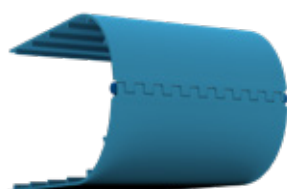
Twin/Lock® Fasteners

Patented high-performance dual-axis system

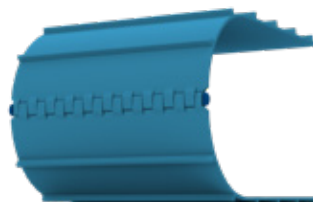


Maintaining belt geometry:

Flexing



Counter-flexing



Specifications:

BELT TYPE	DEL/FLEX	DEL/ROC	DEL/DRIVE 50		DEL/DRIVE 25 2.8	POSITIVEBELT		S/DRIVE
Drive	Friction		Pitch 50mm		Pitch 25.2mm	Pitch 31.5mm		Pitch 39.7mm
Material	PU	PE	PU	PE	PU	PU	PE	PU
Drive side								
Max width (mm)	1800		1800		1800	1000		1650
Traction Rating (DaN/100mm width)	60	85	50	110	30	50	110	50
Min pulley diameter (mm)	80	100	95	110	80	95	120	95

