



MODUTECH[®]
Movement Technologies

Meat Processing Belts



www.modutech.com.tr

MODUTECH is a brand of İŞÇİMENLER Group.



We Turn Ideas into Reality

As Modutech, one of the leading company in the plastic modular belt industry, we continue to grow rapidly. Operating in 2 factories with a combined 15.000m of closed production area, we offer exceptional service and just-on-time delivery privileges to our valued customers. To ensure your satisfaction, we always focus on providing excellent products and service quality.

Our experienced team operates 24/7 in three shifts just to meet your demands and urgent requests. With the new Modutech facility we have doubled our production and stock capacity while maintaining the same product quality, We are expanding our product range day by day according to worldwide quality standards.

We proudly reach the globe with our products. Fuelled by our flexibility, quality, and comprehensive pre-sales and after-sales services, we establish long-term partnerships with our distributors, original equipment manufacturers, and industrial companies. Exporting to over 75 countries through more than 50 distributorships spanning 6 continents.

Today we carry your business into the future, just as we did yesterday.



Why Modutech?



Innovative Solutions for the Meat Processing Industry

At Modutech, we recognize the significance of hygiene, durability, and operational efficiency in the meat industry. Our modular conveyor belt systems are designed to meet the stringent demands of meat production, ensuring seamless and dependable operations.

Our belts are engineered to resist harsh cleaning agents, are simple to maintain, and help minimize downtime. Whether for cutting, deboning, packaging, or distribution, Modutech conveyor systems are the ideal solution for enhancing your production workflow.

Choose Modutech for robust, hygienic, and effective conveyor solutions, tailored to address the distinct requirements of the meat processing sector.



Enhancing Efficiency and Productivity

At Modutech, we focus on streamlining your operations with intelligent and adaptable conveyor systems that evolve with your business's needs.

Our systems are crafted to optimize your production process by minimizing downtime, enhancing performance, and adhering to the highest hygiene standards. With state-of-the-art technology and expert engineering, we help you increase productivity, reduce costs, and improve workflow efficiency. With Modutech, you gain practical solutions that truly impact your business.



Effortless Cleaning for Optimal Hygiene

We understand that maintaining cleanliness is essential, particularly in food processing industries where hygiene standards are strict. That's why our modular conveyor belts are designed for easy cleaning, ensuring you can uphold the highest sanitation standards without sacrificing efficiency.

Our belts feature open-hinge designs, smooth surfaces, and minimal gaps, making residue removal and bacteria prevention easier. They are also resistant to harsh cleaning agents and high-pressure washing, guaranteeing long-term durability even with intensive cleaning protocols.

With Modutech, you can maintain top hygiene levels while reducing cleaning time and effort, ensuring your operations stay safe, compliant, and efficient.

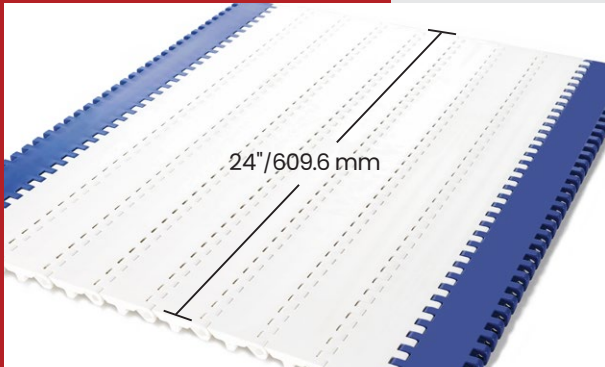


Optimizing your Production Processes

Modutech provides the most suitable belt solutions for every process in the meat processing industry, including: **Cutting, Deboning, Trimming, Slicing, Cleaning, Sorting, Further Processing, Freezing, Packaging.**



Task-Oriented Belting Solutions



HC508C-MTW

Cutting & Deboning Belt

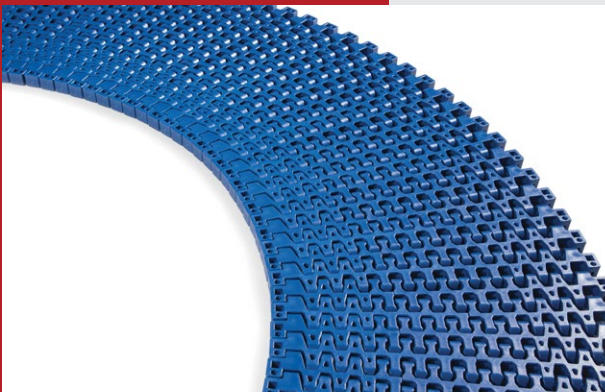
- Single modules up to 24"/609.6 mm wide
- High clean design
- Adjusted belt top surface
- Impact and cut resistant belt material options
- Open hinge design to reduce bacteria growth



EC508C

Meat Processing Belt

- Easy to clean design
- Food approved materials
- Belt materials: POM, PP, PE, PK
- Strong and thick belt design
- Unique sprocket engagement



EC254T R

Radius Belt

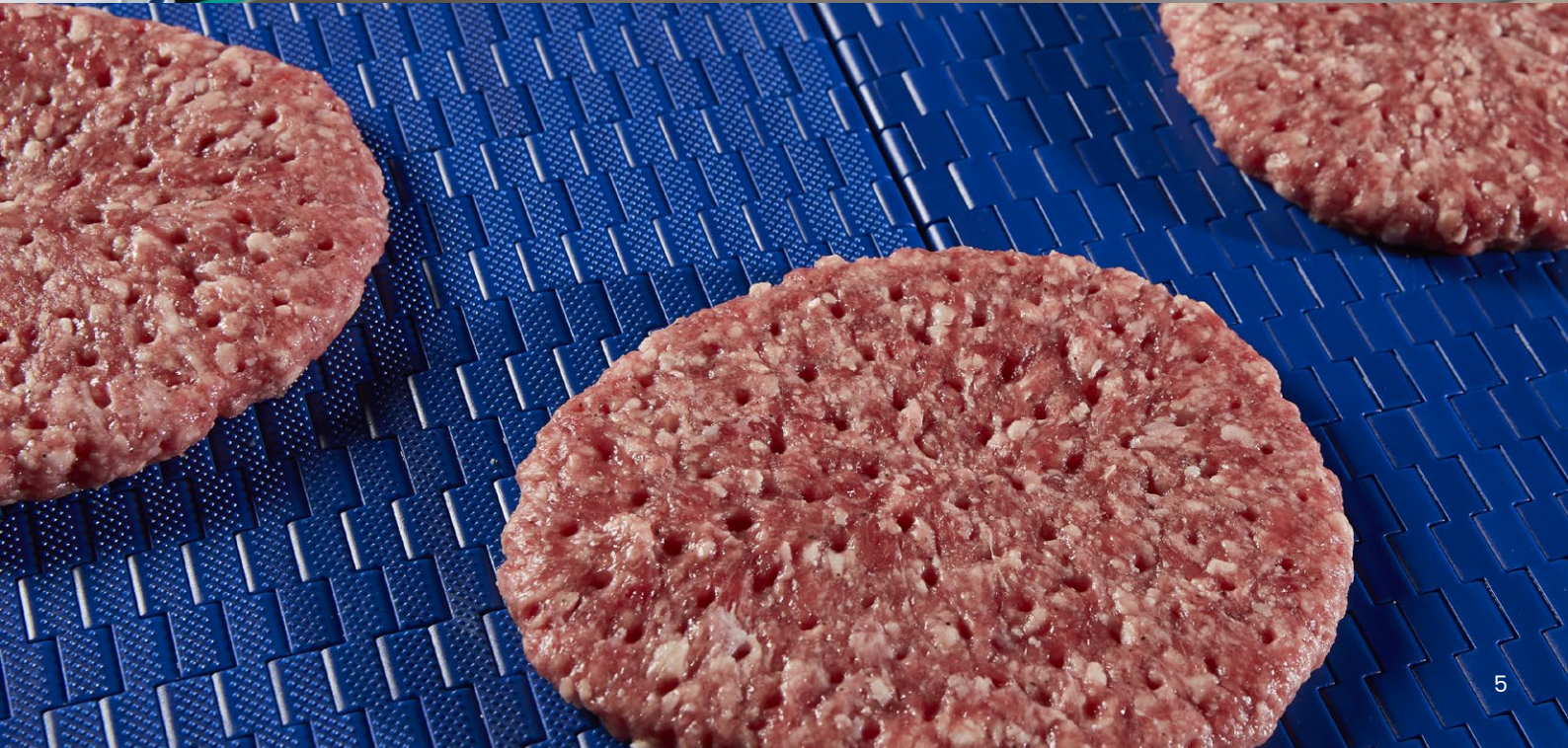
- Easy to clean design
- Radius and straight product transport
- Food approved materials
- Cooling, draining and freezing applications
- Suitable for Spiral freezers.



MP80C

Tight Transfer Belt

- Micro pitch belt design
- Suitable for nosebar/knife edge applications
- Flexible and strong product
- Quick installation and easy maintenance



Applications Table

(Beef & Pork)

Belt Code	Surface Type	Meat (Beef & Pork) Processing																							
		Slaughtering	Cutting / Deboning lines	Bone takeaway	Dressing lines	Trimming	Slicing	Fat line	Offal / Lung lines	Hide lines	Marination lines	Breeding machines	Freezing lines	Hoof / Shank lines	Bone incline decline	High impact / chute discharge	Transfer Conveyors	Elevators	Bacon microwave	Metal detectors	Shrink lines	Minced meat lines	Spiral freezer	Box handling	
HC127 C	Flat Top										PP POM	PP POM	POM				PP POM			PP POM					
EC127 C	Flat Top																PP			PE					
EC127 FG	Flush Grid																PP			PE					
EC254 C	Flat Top					PE POM	PE	PE POM	PP POM									PE POM		PE		PE POM			
EC254 NT	Nub Top												PE POM					PE							
EC254 R	Radius																						POM		
EC254 TR	Tight Radius																						POM		
MD254 FG	Flush Grid										PP POM	PP POM	PE POM					PE						PP POM	
MD254 GAP48%	Flush Grid												PE POM								EHT				
EC381 R	Radius																						POM		
EC508 C	Flat Top	PE POM	POM	PE	PP POM	PP POM	PE	PP POM	POM						POM			PP POM		PE		PE POM		PP POM	
EC508 PR22%	Perforated Flat Top				PP POM	PP POM												PP POM		PE					
EC508 NT	Nub Top																	PE							
HC508 C	Flat Top	POM	POM	POM	PP POM	PP POM	PE	PP POM	POM						POM			PP POM		PE		PE POM		PP POM	
HC508 C-MTW	Flat Top – Mold to Width	POM IR, CR	POM IR, CR	POM IR, CR	POM	POM	PE	PP POM	POM						POM IR, CR	POM IR, CR		PP POM		PE		PE POM		PP POM	
EC508 TR	Tight Radius																						POM		

Materials:

PP: Polypropylene

POM: Polyoxymethylene

PE: Polyethylene

EHT: Extra High Temperature

IR: Impact Resistant

CR: Cut Resistant

The provided selection tables highlight standard belt types and materials as general recommendations. Depending on specific application requirements, other belt types or materials may be more appropriate. For special applications, please contact with Modutech representatives.

- DECLARATION OF COMPLIANCE -

Modutech Konveyör Bant Sistemleri San. ve Tic. A.Ş., Kemalpaşa OSB Mah. Nif Sanayi
Caddesi No: 5 Kemalpaşa / İzmir, Turkey, here by declares under its exclusive
responsibility that the Modular Belt (PP)

FDA

according to the CFR code
code of Federal Regulations

Title 21 § 177.1520

Granules and additives used to manufacture the modular belts are selected exclusively
among those listed by FDA standard

Specifications 3.1 Olefin Copolymers for use in articles that contact food except
for articles used for packing and holding food during cooking.

This attest was issued on the basis of the accredited SGS laboratory test with:

Project no: TR2299290
Date of Report: June 2nd, 2023



Modutech Konveyör Bant
Sistemleri San. ve Tic. A.Ş.
Kemalpaşa OSB Mah. Nif Sanayi
Caddesi No: 5 Kemalpaşa/İzmir-TURKEY
Phone : +90 232 877 00 22 (pbx)
Fax: +90 232 877 01 11
Mail: info@modutech.com.tr
www.modutech.com.tr

Ulaş DURSUN
Modutech Quality Manager



Our Declaration of Compliance

Modutech offers you wide range
of modular belts with FDA – EU
certificates.

- DECLARATION OF COMPLIANCE -

Modutech Konveyör Bant Sistemleri San. ve Tic. A.Ş., Selvitepe OSB Mah. 1872 Cadde No: 13/1 Turgutlu,
Manisa – Turkey, here by declares under its exclusive responsibility that the

MODULAR BELT POLYPROPYLENE PLASTIC (PP) RAW MATERIAL

Conforms with the Food Regulations with reference to
COMMISSION REGULATION EU NO 10/2011 of 14 January 2011 and amendments

The belt is suitable to come into contact with any aqueous, acid, oily and fatty food listed in the Regulation
EU 10/2011 and amendments.

As prescribed by Commission Regulation EU 10/2011 - Annex III and Annex V, MODUTECH declares that:

All materials used to produce this belt comply with the applicable law.

The overall migration of the authorized substances, measured using the prescribed extracting substances
(simulants) is lower than the maximum limit allowed:

Overall migration with simulant A – ethanol 10%	< 10 mg / dm ²
Overall migration with simulant B – acetic acid 3%	< 10 mg / dm ²
Overall migration with simulant – ethanol 95%	< 10 mg / dm ²
Overall migration with simulant – isooctane 10%	< 10 mg / dm ²
Overall migration with simulant E – MPPPO (tenax)	< 10 mg / dm ²

Tests have been carried out for a period of 2 hours at 70 °C.
The limit of detection is 3 mg / dm²

The soluble heavy metals in aqueous test is lower than maximum limit allowed:

Specific migration of Barium	< 1.00 mg / kg
Specific migration of Cobalt	< 0.05 mg / kg
Specific migration of Copper	< 5.00 mg / kg
Specific migration of Iron	< 48.00 mg / kg
Specific migration of Lithium	< 0.60 mg / kg
Specific migration of Manganese	< 0.60 mg / kg
Specific migration of Zinc	< 25.00 mg / kg

The information herein contained represents an extract from an analysis certification issued by an
Accredited IAS laboratory test with: Report no TR2299290 Dated 02.06.2023



Modutech Konveyör Bant
Sistemleri San. Ve Tic. A.Ş.
Selvitepe OSB Mah. 1872 Cadde No: 13/1
Turgutlu, Manisa – Turkey
Phone: +90 232 877 00 22 (pbx)
Fax: +90 232 877 01 11
Mail: info@modutech.com.tr
www.modutech.com.tr

Ulaş DURSUN
Modutech Quality Manager



MANİSA Headquarters

Factory 1

Selvilitepe OSB Mah.
1872 Cad. No:13
Turgutlu / Manisa - TURKEY

Factory 2

Selvilitepe OSB Mah.
2008 Cad. No:1
Turgutlu / Manisa - TURKEY

Phone: +90 236 503 00 10 (pbx)

Fax: +90 236 503 00 99

e-mail: info@modutech.com.tr

www.modutech.com.tr



GERMANY Office

Modutech Belting GmbH
Erich-Kästner-Str. 29
DE-48485 Neuenkirchen

Phone: +49 5973 7 382 630

Fax: +49 172 6 839 460

e-mail: info@modutech-belting.de

www.modutech-belting.de

