

BELL-MARK

InteliJet LPc

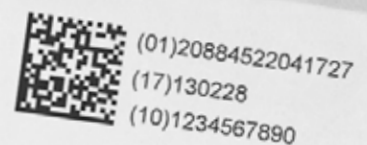
**High Speed, High Resolution
Thermal Inkjet 4.0 Print Solution**

Printing & Coding

**Labels printed
directly on product**

Serialization Ready

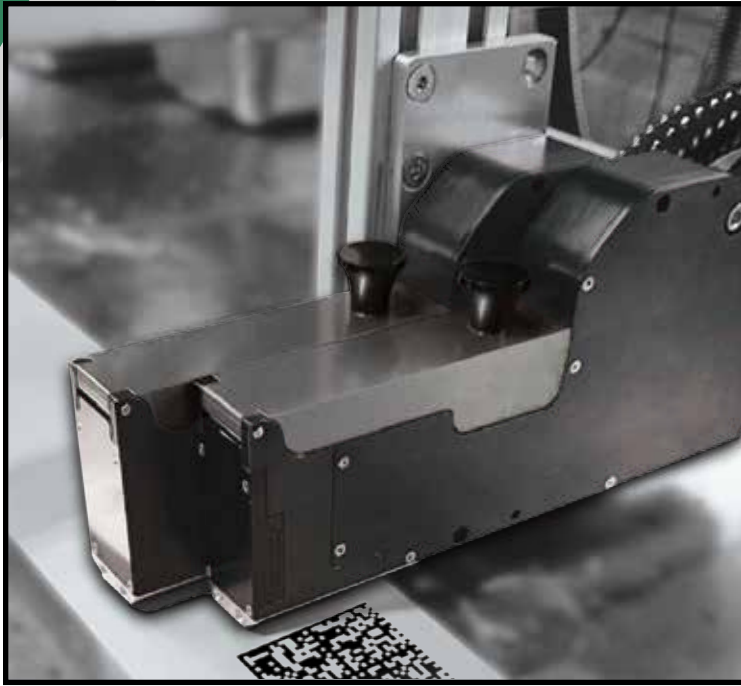
- Print speeds up to 732 m/min
- 1,200 DPI resolution
- 22mm print head width
- Up to 7mm throw distance
- Stitch up to 4 print heads, controlled by a single user interface
- Lower cost ink solution
- Higher efficiency



High Throughput Print Solution

InteliJet LPc

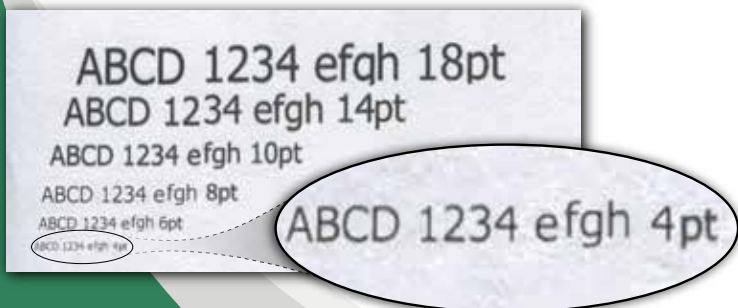
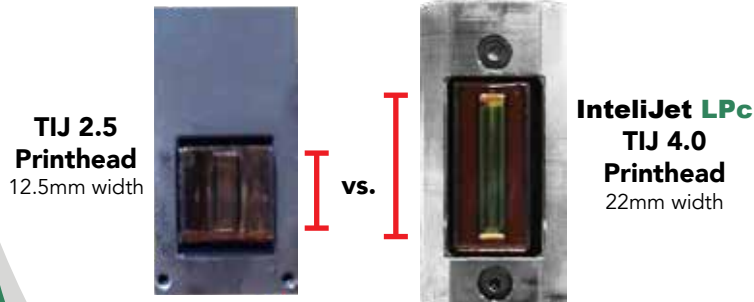
The latest innovation from **BELL-MARK** is the InteliJet LPc. Utilizing TIJ 4.0 technology with 22mm wide print heads, it is a high throughput variable data printing solution. With increased throw distance and a speed that is 4 times faster than TIJ 2.5 printers, it reduces operational costs while providing incredible print resolution in applications where quality is a major business driver.



Advanced TIJ 4.0 Print Technology

With a 22mm print swath, a 775ml ink supply, greater throw distance and improved print resolution, the InteliJet LPc is designed exclusively for high production environments.

- 22mm (7/8") print width
- Improved print quality and throw distance
- 4 times faster than TIJ 2.5



High Quality, High Speed

The InteliJet LPc supports up to 1,200 DPI resolution, giving you maximum quality at all times. For all production applications where throughput is critical, the printer is capable of ultra fast print speeds up to 732m/min (2,400 ft/min) to meet your productivity goals.



Print Controller with Integrated Ink System

Small footprint industrial housing with an ink docking station, power and monitoring LEDs.

Controller Dimensions:
330mm x 279mm x 241mm
(13in x 11in x 9.5in)

Connectivity Panel

Encoder, Sensor, Daisy Chain, I/O, Ethernet, Stack Light

Advanced User Interface

The 295mm (11.6") color touch-screen HMI offers a powerful user interface which enables users to monitor a wide array of operating conditions, such as job types and counts.

The HMI also includes label creation software. Use the touch-screen to easily preview and create print templates or import them via an Ethernet connection or a USB thumb drive.

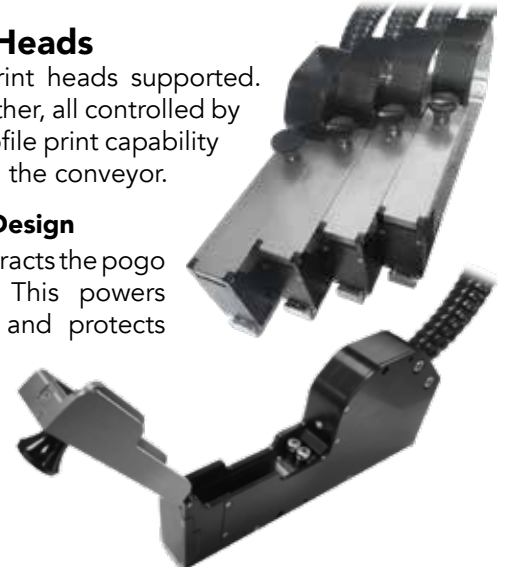


Premium Print Heads

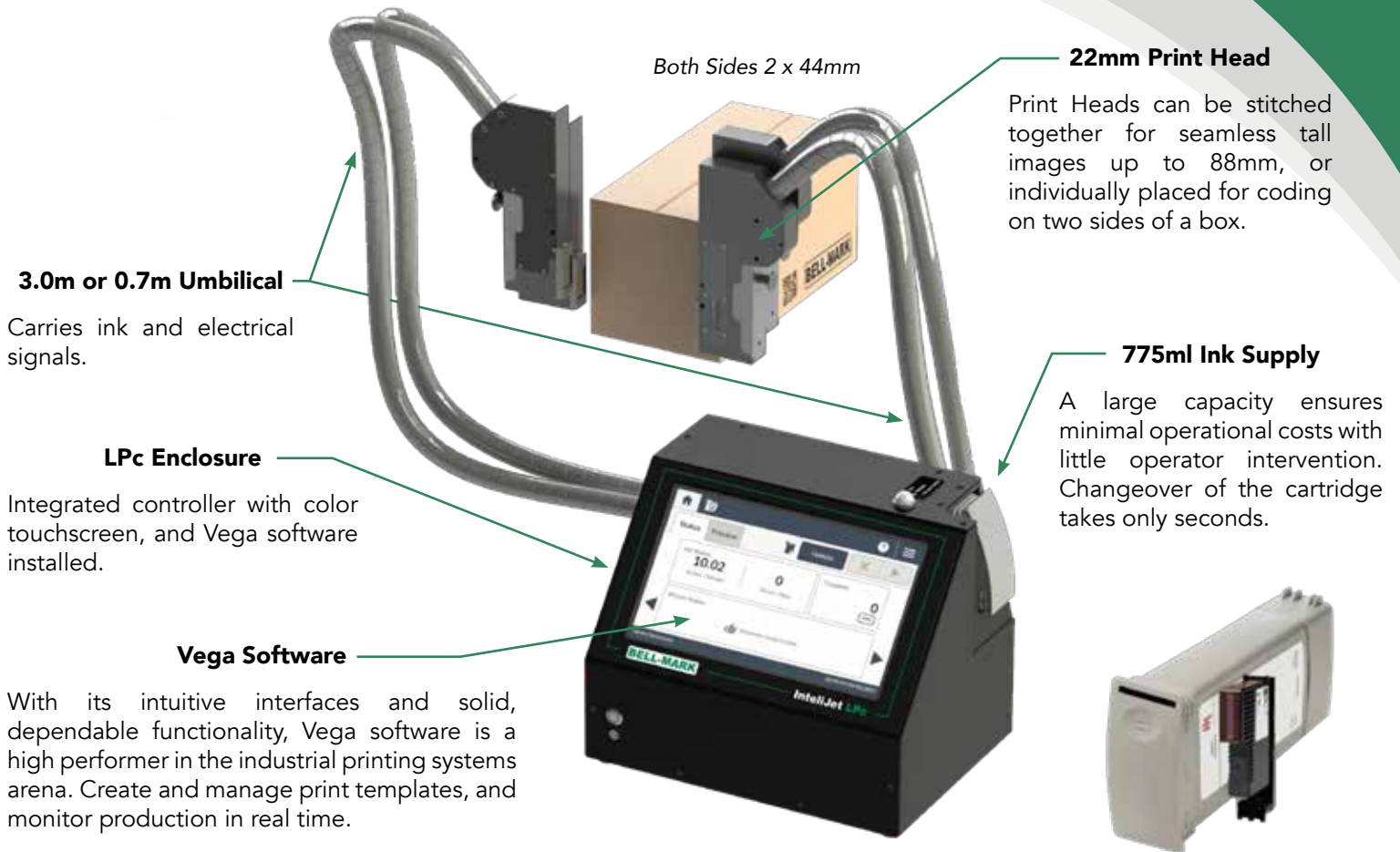
Up to four 22mm print heads supported. Can be stitched together, all controlled by a single HMI. Low profile print capability at 16mm (0.65") from the conveyor.

Patented Pen Stall Design

Opening the cover retracts the pogo pin contact board. This powers down the cartridge and protects the electronics and print cartridge from being damaged during insertion and removal.



Next-gen Performance in Case Coding



Both Sides 2 x 44mm

22mm Print Head
Print Heads can be stitched together for seamless tall images up to 88mm, or individually placed for coding on two sides of a box.

3.0m or 0.7m Umbilical
Carries ink and electrical signals.

LPc Enclosure
Integrated controller with color touchscreen, and Vega software installed.

Vega Software
With its intuitive interfaces and solid, dependable functionality, Vega software is a high performer in the industrial printing systems arena. Create and manage print templates, and monitor production in real time.

775ml Ink Supply
A large capacity ensures minimal operational costs with little operator intervention. Changeover of the cartridge takes only seconds.

Possible LPc Configurations



Single Side 22mm

Both Sides 2 x 22mm

Single Side 88mm

Four LPc Print Heads installed on a Case Taper



LPc - Unmatched Capability

Horizontal Resolution	Max Speed	
	ft/min	m/min
1200	300	92
600	600	183
300	1200	366
150	2400	732

Characteristic	IntelJet LPc
Print Width	22mm - 88mm (7/8" - 3.5")
Maximum Resolution	1,200 DPI
Drop Size	6 pl
Jetting Frequency	72 kHz
Throw Distance	Up to 7mm (1/4") *

* Print Speed Dependent

Printable Items	Lot Codes, Date codes, Alphanumeric, Barcodes, Bitmaps, PDF
Barcode Printing	EAN-13/EAN 8, UPC-A, Code128, ITF-14, ITF-2of5, Code39, Cryptocode, GS1 Data-matrix, QR (114 barcode support included)
Print Density	User Configurable (12.5% - 100%)
Umbilical Length	0.7m (3.2 ft) and 3m (9.8 ft)
Ink Types	Aqueous (Black and Spot Colors)
Ink Solution	775mL Ink Supply
Electrical Interface	Ethernet, I/O, Sensor, Encoder, Stack Light
Voltage	115V to 240V
Software Included	Vega from BELL-MARK
Connectivity	SQL, Remote Host, ERP
Languages	English, Spanish, German, French, Korean, Chinese, Portuguese
Data File Support	CSV, TXT, MDB, XLS, XLSX, ACCDB

Ink Usage Estimates

The following examples give an estimate of the number of prints you can expect before replacement of the Ink Supply. For more information, contact your **BELL-MARK** sales representative.

22mm tall - 165,500 Prints



44mm tall - 77,900 Prints



88mm tall - 42,800 Prints



BELL-MARK