

Consulting

Service

Sales

Combi Coater

Pre-duster and breadcrumb applicator
Flatbed as well as drum breader

**NEW
INNOVATION**



The flexibility in coating results that you and your customers have been looking for:

- Pre-dust under an extra wide curtain of flour gives better coverage
- Pre-dust with drum evenly cover and spread products over the belt width
- When using breadcrumbs, you'll soon notice the delicate handling of crumbs inside the machine
- Breadcrumbs are lifted with scoops to eliminate the grinding that traditional screw type crumb transporters use
- Optional flip over unit to imitate homestyle look and feel also on delicate formed products
- Optional roller and vibrating plate to attach more crumb to the product

Consulting

Service

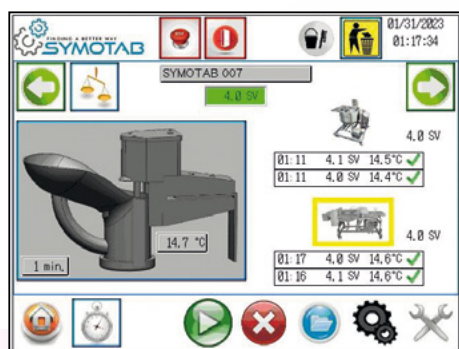
Sales

Wizz Cup for viscosity control

Unique digital viscosity and temperature measuring device for batter and tempura

Function:

- Communicates with a multicolored lamp and can be moved over a slider to measure product from either the mixer or the dipper
- Indicates that the last measurement was within set parameters
- After a set time the light turns to show next test should be done
- The operator only needs to fill the Wizz cup



Advantages:

- The cup has an easy removable bottom
- Bottoms are available with a variety of hole diameter for a faster and consistent measurement of either very viscous Tempura or a light milkwash batter
- CombiCoater shows and saved date, time, viscosity and temperature of the sample as well as where the sample was taken from

www.combicoater.com/crispy-pages

www.schomaker-tec.de

Consulting

Service

Sales

Intelligent Dipper type SMD 650 and 1,050

For batter and tempura coating



- Designed to cover products with liquids like tempura, batter and other liquids
- Wirelessly connected to the CombiCoater
- Operated from touchscreen of the Combi Coater
- Possibility to save all parameters and store them as a recipe

Innovative Tempura Mixer type SBM



Consulting

Service

Sales

Hopper for CombiCoater

Loading tank for higher production volumes

- The 300 Liter Hopper is optional
- Recommended for higher production volumes
- Designed for more flexibility
- Placeable on each side of the Combi Coater

