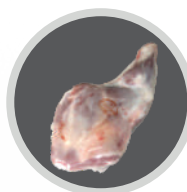


VCC STAR

CONTINUOUS VACUUM HOOD



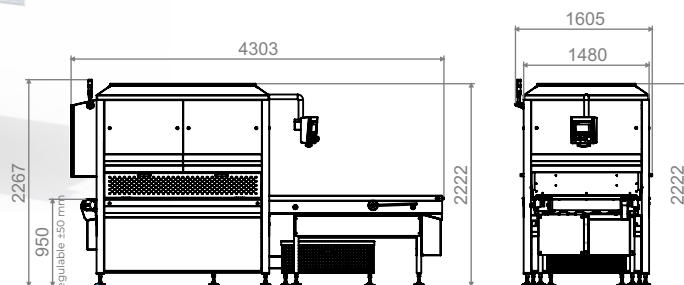
Lavado a presión

EXAMPLE:
DISTANCE BETWEEN SEALING BARS 900mm
LENGTH OF SEALING BARS 1500mm

STANDARD MODELS:

Distance between sealing bars - Length of sealing bars

800-1000 mm
850-1300 mm
900-1500 mm

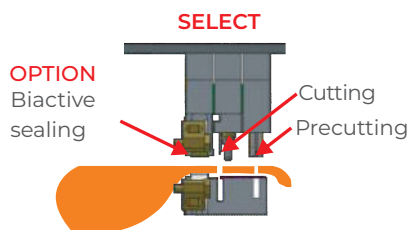


HOOD HEIGHT



SELECT SEALING HEIGHT

Standard: 35 mm
OPTION: 70 mm



BUSCH



SELECT
100 m³/h
160 m³/h
202 m³/h
250 m³/h
302 m³/h
400 m³/h
502 m³/h
630 m³/h

ROOTS SELECT
250 m³/h
500 m³/h
1000 m³/h
1500 m³/h



SELECT

Electrical requirements: 220/230 V - trifásica -3+N+Tierra
Electrical requirements: 220/230 V - trifásica -3+Tierra
Electrical requirements: 380/400 V - trifásica -3+N+Tierra
Electrical requirements: 380/400 V - trifásica -3+Tierra
Electrical requirements: 440V - trifásica -3+N+Tierra
Electrical requirements: 440 V - trifásica -3+Tierra
Electrical requirements: 460 V - trifásica -3+N+Tierra
Electrical requirements: 460 V - trifásica -3+Tierra

FEATURES

- ✓ Securities according to CE standards.
- ✓ Pneumatic system SMC and Festo.
- ✓ Stainless steel chassis ultimate design.
- ✓ Leveling feet of level and height.
- ✓ Side doors for an easy access to maintenance.
- ✓ Motor-driven conveyor belt.
- ✓ Easy cleaning of the conveyor belt suitable for food products.
- ✓ Easy changing of the lid gasket without adhesives nor tools.
- ✓ The machine can be installed on both sides, towards the left or the right side.
- ✓ Vacuum packaging machine of any type of product and any size.
- ✓ Adjustable screen.
- ✓ 10 programmes for different packaging products.
- ✓ Vacuum by millibars, by time or both at the same time
- ✓ Intermittent vacuum.
- ✓ Vacuum alarm not reached.
- ✓ Soft-air: filling of soft blinking air.

- ✓ Shrinkable and non-shrinkable vacuum bags.
- ✓ Operating mode (manual) (semi-automatic) and (automatic).
- ✓ Special sealing for products containing oil, blood, fat, etc.
- ✓ Speed from 1 to 3 cycles/minute according to pumps and humidity- temperature of the product.

SUPPLIES

- ✓ Compressed air consumption: 800-1200 litres/minute/6 bars of pressure.
- ✓ Maximum power: It depends on the pumps.
- ✓ Total weight without pumps about 2500 Kg.

OPCIONES

- OPTION:** Bi-active bottom sealing cord of 10 mm
- OPTION:** Height of sealing bars: 70 mm (standard 35 mm).
- OPTION:** Complete cutting.
- OPTION:** Trims collector by vacuum suction+compressed air.
- OPTION:** Trims collector just by compressed air.
- OPTION:** Anti-blowing system in the bags.
- OPTION:** Statistical data export
- OPTION:** Remote control
- OPTION:** Spare parts kit.
- OPTION:** Temperature stabilizer control (ROPEX)
- OPTION:** Loading belt with buckets
- OPTION:** Transfer cords on load bars
- OPTION:** Articulated band splice
- OPTION:** Bench for external pumps