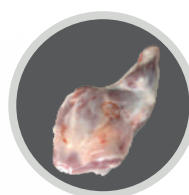


VCC PLUS

CONTINUOUS VACUUM HOOD



EXAMPLE:
DISTANCE BETWEEN SEALING BARS 900mm
LENGTH OF SEALING BARS 1500mm

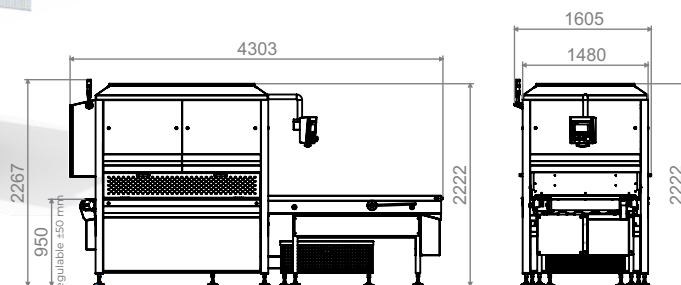
Measures to choose from:

DISTANCE BETWEEN SEALING BARS

From 500 to 1500 mm in 100 mm steps between sealing bars

LENGTH OF SEALING BARS

Useful sealing from 1000 mm to 1600 in 100 mm steps

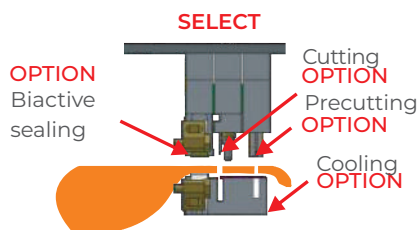


SELECT HOOD HEIGHT



SELECT SEALING HEIGHT

Standard: 35 mm
OPTION: 24 mm
OPTION: 70 mm



BUSCH



SELECT
100 m³/h
160 m³/h
202 m³/h
250 m³/h
302 m³/h
400 m³/h
502 m³/h
630 m³/h

ROOTS SELECT BUSCH



SELECT
250 m³/h
500 m³/h
1000 m³/h
1500 m³/h

SELECT

Electrical requirements: 220/230 V - trifásica -3+N+Tierra
Electrical requirements: 220/230 V - trifásica -3+Tierra
Electrical requirements: 380/400 V - trifásica -3+N+Tierra
Electrical requirements: 380/400 V - trifásica -3+Tierra
Electrical requirements: 440V - trifásica -3+N+Tierra
Electrical requirements: 440 V - trifásica -3+Tierra
Electrical requirements: 460 V - trifásica -3+N+Tierra
Electrical requirements: 460 V - trifásica -3+Tierra

FEATURES

- ✓ Securities according to CE standards.
- ✓ Pneumatic system SMC and Festo.
- ✓ Stainless steel chassis ultimate design.
- ✓ Leveling feet of level and height.
- ✓ Side doors for an easy access to maintenance.
- ✓ Motor-driven conveyor belt.
- ✓ Easy cleaning of the conveyor belt suitable for food products.
- ✓ Easy changing of the lid gasket without adhesives nor tools.
- ✓ The machine can be installed on both sides, towards the left or the right side.
- ✓ Vacuum packaging machine of any type of product and any size.
- ✓ Adjustable screen.
- ✓ 10 programmes for different packaging products.
- ✓ Vacuum by millibars, by time or both at the same time
- ✓ Intermittent vacuum.
- ✓ Vacuum alarm not reached.
- ✓ Soft-air: filling of soft blinking air.
- ✓ Shrinkable and non-shrinkable vacuum bags.

- ✓ Operating mode (manual) (semi-automatic) and (automatic).
- ✓ Special sealing for products containing oil, blood, fat, etc.
- ✓ Speed from 1 to 3 cycles/minute according to pumps and humidity- temperature of the product.

SUPPLIES

- ✓ Compressed air consumption: 800-1200 litres/minute/6 bars of pressure.
- ✓ Maximum power: It depends on the pumps.
- ✓ Total weight without pumps about 2500 Kg.

OPCIONES

- OPTION:** Bi-active bottom sealing cord of 10 mm
- OPTION:** Height of sealing bars: 24 or 70 mm (standard 35 mm).
- OPTION:** Complete cutting.
- OPTION:** Partial cutting.
- OPTION:** Pre-cutting of extra-long bags.
- OPTION:** Trims collector by vacuum suction+compressed air.
- OPTION:** Trims collector just by compressed air.
- OPTION:** Anti-blowing system in the bags.
- OPTION:** BC, independent loading band
- OPTION:** Statistical data export
- OPTION:** Remote control
- OPTION:** Cooling in the sealing by water
- OPTION:** Cooling in the sealing by air
- OPTION:** Spare parts kit.
- OPTION:** Temperature stabilizer control (ROPEX)
- OPTION:** Loading belt with buckets
- OPTION:** Transfer cords on load bars
- OPTION:** Articulated band splice
- OPTION:** Electrical pre-installation for robotic loading
- OPTION:** Bench for external pumps