

slaughtering lines

PIG AND CATTLE



PIG slaughtering lines

1. Drive-through
2. Drive-through with shower
3. Pneumatic pressure box
4. Ejection pad
5. Differential conveyor to the bleed-out line
6. Synchronizer to the bleed-out line
7. Bleed-out line with a rod-type conveyor
8. Tub for bleeding-out while hanging
9. Shower washer
10. Catching conveyor
11. Scalding
12. Bristle remover
13. Table for additional cleaning after bristle remover
14. Differential conveyor to the processing line
15. Synchronizer to the processing line
16. Processing conveyor
17. Four-shaft jet washer
18. Processing platform
19. Screen for the cutting into half-carcass post
20. Detailed examination line
21. WIS detailed examination, final washing, class-assigning and weighing post
22. Tray conveyor for intestines and innards
23. Intestine ejection
24. Tray washer
25. Intestine slide
26. Control cabinet
27. Sink with a bent valve
28. Knife sterilizer
29. Apron washer
30. Table for separating intestine sets
31. Large intestine washer

Cattle slaughtering lines

32. Cattle slaughter box
33. Ejection pad
34. Electric winch
35. Gravitational bleed-out line with post breaks
36. Tub for bleeding-out while hanging
37. Bleed-out platform
38. Fixed platform for slinging
39. Tether return line
40. Processing line
41. Hydraulic skinner
42. Pneumatic device for pushing apart
43. Pneumatic platform for skinning
44. Heads washer
45. Line for heads
46. Pneumatic platform for gutting with an ejection tray
47. Examination table with a slide to the intestine processing
48. Pneumatic platform for cutting into half-carcasses
49. Screen for the cutting into half-carcass post
50. Fixed platform for veterinary control
51. Fixer platform for sucking off core and springing up lard
52. Class-assigning and weighing platform
53. Vacuum transport refuse chute
54. Sole disinfection mat
55. Apron and shoe washer
56. Zone barriers with directional gates

POLSKA

09-230 Bielsk

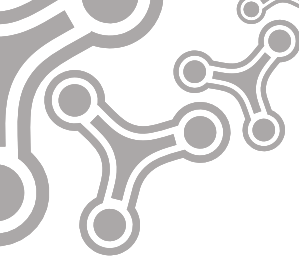
ul. Spółdzielcza 30

tel./fax (+48 24) 261 55 09

261 51 30

261 50 95

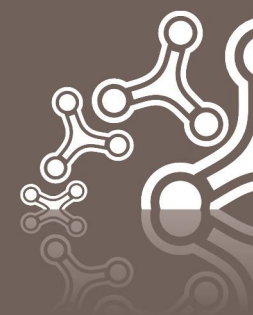
fax (+48 24) 261 58 26



slaughtering lines

PIG AND CATTLE

PEK-MONT®



POLSKA
09-230 Bielsk
ul. Spółdzielcza 30
tel./fax (+48 24) 261 55 09
261 51 30
261 50 95
fax (+48 24) 261 58 26

pekmont@pekmont.pl
www.pekmont.pl