



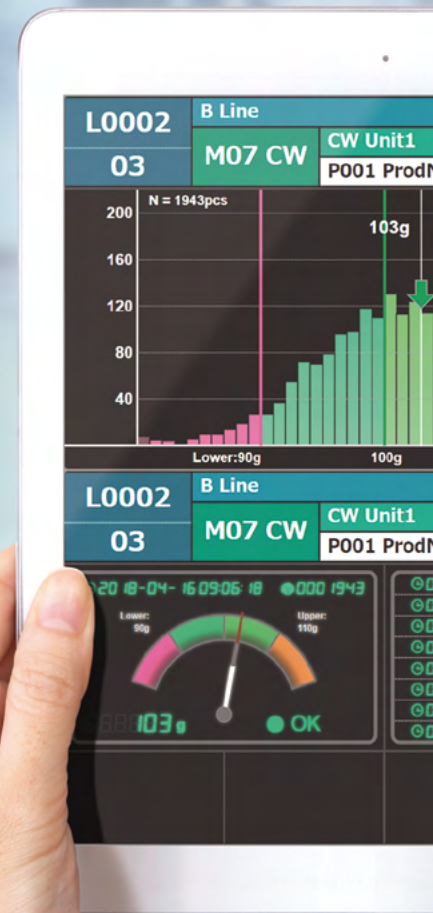
# KSA9003A



# The production line in

All your production

# QUIC



## Real-time production, system and event monitoring for complete line optimization.

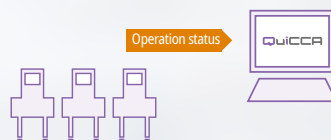
### Record production data automatically

Data recorded includes operational history, in chronological order, of all inspection systems in one centralized location. Eliminate the inaccuracies and effort of manual data sampling.



### Monitor production lines in real-time

The operating status of production and inspection equipment can be listed and monitored.



### Output production data report

Generate and view production status reports. Production trending and variances are available for analysis.

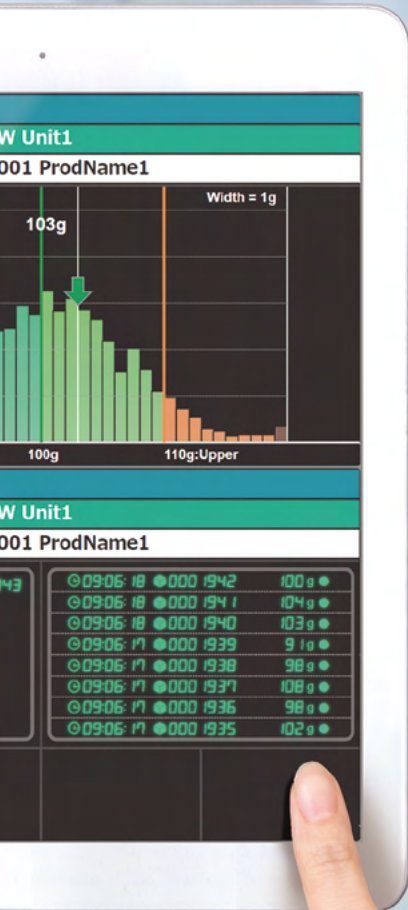




# the palm of your hand.

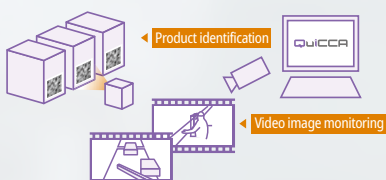
data - anywhere, anytime

## CA 3

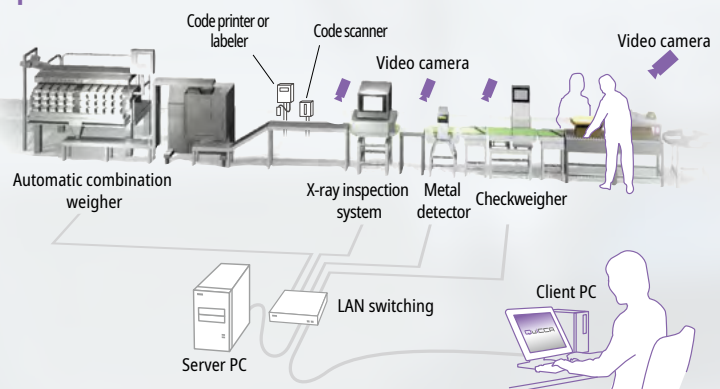


### Product identification & Video recording

Each individual pack can be tracked by its unique bar or 2D code. Video recording, optional, can also be associated to each unique package providing a complete inspection record of each products.



### Example



# Information, Decision, Future - Link together with QUICCA 3

There is a concern about whether rejected products (NG) are being processed properly or not.

CCP monitoring ⇒ page 11

Video recording function ⇒ page 12

Check inspection record instantly to handle inquiries promptly.

QUICCA web ⇒ page 6

Quality analysis ⇒ page 10

Product traceability ⇒ page 12

Quickly confirm any impact on the quality of products.

QUICCA web ⇒ page 6

CCP monitoring ⇒ page 11

There is a concern about whether control value and sensitivity setting for equipment is appropriate or not.

QUICCA monitor ⇒ page 7

Quality analysis ⇒ page 10

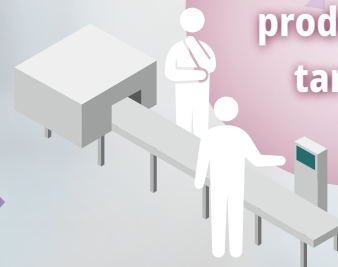
## Quality control manager

Protect quality and credibility



## Production manager

Achieve production targets



It is difficult to physically go to the lines every time to monitor production progress.

QUICCA monitor ⇒ page 7

Production progress monitor ⇒ page 8

Minimize rejected products and waste of raw materials.

QUICCA web ⇒ page 6

QUICCA monitor ⇒ page 7

Identify the cause of decline in productivity on a production line.

OEE monitor ⇒ page 9

Data linkage option ⇒ page 13

**Increase profit by using existing equipment proficiently.**

Production progress monitor ⇒ page 8

OEE monitor ⇒ page 9

**Eliminate waste of raw materials and reduce costs.**

QUICCA monitor ⇒ page 7

Production progress monitor ⇒ page 8

**Plant manager**

**Enhance profitability**



**Improve working environment to increase the retention rate of workers.**

QUICCA web ⇒ page 6

Production progress monitor ⇒ page 8

**Section leader on site**

**Complete operation certainly**



**Share information with relevant divisions smoothly.**

QUICCA monitor ⇒ page 7

Production progress monitor ⇒ page 8

Data linkage option ⇒ page 13

**I want to fill out reports automatically because I'm too busy to do it manually.**

QUICCA web ⇒ page 6

Production progress monitor ⇒ page 8

CCP monitoring ⇒ page 11

Audit trail option ⇒ page 11



**QUICCA Web  
(KSA9003A)**

—— Basic screen

### Displays historical and current production status

Production status can be checked from multiple locations anytime, eliminating the need for walking around the site.

## 【Functions】

1. Automatic report creation reduces the burden of operator and manager.
2. View the current status of each line and the number of NG products.

## 【Results】

1. The paper-less report reduces the working hours and allows operator/manger to correspond promptly.
2. Errors on production line can be identified instantly, reducing the time to handle errors.  
Unnecessary rejection will be avoided and productivity will be increased.

System Version: 1.00.0005

QUICCA Web/View production status

## Check status of all inspection systems at a glance

QUICCA Web Menu

View production status

View past and current production status. Data search can be done here.

Monitoring machine

A tool for checking machine anomalies is available.

Standard feature

Set up and view the QUICCA monitor.

Production Analysis Op.

You can use various tools to analyze production efficiency.

Quality Analysis Op.

You can use various tools for quality analysis.

Display production status. Please select the item you want to see

Current State
Summary

last updated: 2018-04-12 16:33:59

**L0001 Rice ball Line**

01	XR75		Prod kind: P001
XR	X-Ray[00]	OK	Rice Bowl(SAKE)
02	Metal detector		Prod kind: P001
MD	Metal Detect(MD)	OK	Rice Bowl(SAKE)
03	Check Weighter		Prod kind: P001
CW	Weight Checker(CW)	STOP	Rice Bowl(UME)

**L0002 Sushi Line**

04	X-Ray Inspection		Prod kind: P001
XR	X-Ray[00]	OK	Temaki
05	Check Weighter		Prod kind: P001
CW	Weight Checker(CW)	OK	Temaki

**L0003 Lunch box Line**

01	X-Ray Inspection		Prod kind: P001
XR	X-Ray[00]	OK	Karaage Bento
02	Metal detector		Prod kind: P001
MD	Metal Detect(MD)	OK	Karaage Bento
03	Check Weighter		Prod kind: ---
CW	Weight Checker(CW)	STOP	No data

View List

View Title

		Total	OK	NG
ACTIVE	Total	1,207	1,207	0
			1,207	0
ACTIVE	Total	1,208	1,208	0
			1,208	0
IDLE	Total	0	0	0
			0	0

Display production status. Please select the item you want to see.

Current State
Summary

Search conditions: Please enter search conditions.

☒ Period (start/end date) 2018-04-12 ~ 2018-04-12 From:2018-04-12 00:00 To:2018-04-12 23:59

☐ Machine (operator) No. 01 ~ 001 (0,0001-01)

☒ Lot No. L010

☒ Prod Name: Please enter key words

Search

**Result:** last updated: 2018-04-12 16:32:28 CSV Output HTML Output

Search results: 23Items

Items	Start	End	Lot No.	Prod Name	Line A,B,C,D	Equipment No. & Unit	Total	OK	NG	OK/NG Out	NG Out
1	2017-12-14 16:27	2018-02-18 19:54		PROD 1	0001	01 01 XR	10,401	8,837	1,564		
2	2018-03-16 20:04	2018-03-27 14:58		PROD 1	0001	01 01 XR	11,658	9,927	1,731		
3	2018-03-07 14:56	2018-03-09 18:09		PROD 1	0001	01 01 XR	856	729	127		
4	2018-04-12 19:20	2018-04-12 16:29		PROD 1	0001	01 01 XR	2,858	2,858	0		
5	2018-04-30 16:06	2018-04-30 16:41		PROD 1	1214	01 01 XR	1,090	840	150		

## Simple navigation menu

- Flexible search by line or time period and output the results in CSV or PDF format

The electronic report of production condition can be generated automatically by searching specific data such as date, inspection equipment, lot number, product name, etc.

[illegible]

## Production results summary

[illegible]

Inspection system statistical reports

10/1/2019 10:13:04

**X2 Individual data report (1/1/20)**

		Report information	
1-8 No	Label#	Test Name	Ref & Unit/Ref 1/2/3/4
Test No	REF	Test Date	Test Unit
Test Date	Ref	Test Name	Ref 1/2/3/4
Test No	Ref	Test Name	Ref 1/2/3/4
<b>Individuals</b>			
Total number of tests: 102 / 100			
TEST NO	Label#	Test Name	Assigned result
1	2015-04-04 10:13:04	PA02	
2	2015-04-04 10:13:04	PA02	
3	2015-04-04 10:13:04	PA02	
4	2015-04-04 10:13:04	PA02	
5	2015-04-04 10:13:04	PA02	
6	2015-04-04 10:13:04	PA02	
7	2015-04-04 10:13:04	PA02	
8	2015-04-04 10:13:04	PA02	
9	2015-04-04 10:13:04	PA02	
10	2015-04-04 10:13:04	PA02	
11	2015-04-04 10:13:04	PA02	
12	2015-04-04 10:13:04	PA02	
13	2015-04-04 10:13:04	PA02	
14	2015-04-04 10:13:04	PA02	
15	2015-04-04 10:13:04	PA02	
16	2015-04-04 10:13:04	PA02	
17	2015-04-04 10:13:04	PA02	
18	2015-04-04 10:13:04	PA02	
19	2015-04-04 10:13:04	PA02	
20	2015-04-04 10:13:04	PA02	
21	2015-04-04 10:13:04	PA02	
22	2015-04-04 10:13:04	PA02	
23	2015-04-04 10:13:04	PA02	
24	2015-04-04 10:13:04	PA02	
25	2015-04-04 10:13:04	PA02	
26	2015-04-04 10:13:04	PA02	
27	2015-04-04 10:13:04	PA02	
28	2015-04-04 10:13:04	PA02	
29	2015-04-04 10:13:04	PA02	
30	2015-04-04 10:13:04	PA02	
31	2015-04-04 10:13:04	PA02	
32	2015-04-04 10:13:04	PA02	
33	2015-04-04 10:13:04	PA02	
34	2015-04-04 10:13:04	PA02	
35	2015-04-04 10:13:04	PA02	
36	2015-04-04 10:13:04	PA02	
37	2015-04-04 10:13:04	PA02	
38	2015-04-04 10:13:04	PA02	
39	2015-04-04 10:13:04	PA02	
40	2015-04-04 10:13:04	PA02	
41	2015-04-04 10:13:04	PA02	
42	2015-04-04 10:13:04	PA02	
43	2015-04-04 10:13:04	PA02	
44	2015-04-04 10:13:04	PA02	
45	2015-04-04 10:13:04	PA02	
46	2015-04-04 10:13:04	PA02	
47	2015-04-04 10:13:04	PA02	
48	2015-04-04 10:13:04	PA02	
49	2015-04-04 10:13:04	PA02	
50	2015-04-04 10:13:04	PA02	
51	2015-04-04 10:13:04	PA02	
52	2015-04-04 10:13:04	PA02	
53	2015-04-04 10:13:04	PA02	
54	2015-04-04 10:13:04	PA02	
55	2015-04-04 10:13:04	PA02	
56	2015-04-04 10:13:04	PA02	
57	2015-04-04 10:13:04	PA02	
58	2015-04-04 10:13:04	PA02	
59	2015-04-04 10:13:04	PA02	
60	2015-04-04 10:13:04	PA02	
61	2015-04-04 10:13:04	PA02	
62	2015-04-04 10:13:04	PA02	
63	2015-04-04 10:13:04	PA02	
64	2015-04-04 10:13:04	PA02	
65	2015-04-04 10:13:04	PA02	
66	2015-04-04 10:13:04	PA02	
67	2015-04-04 10:13:04	PA02	
68	2015-04-04 10:13:04	PA02	
69	2015-04-04 10:13:04	PA02	
70	2015-04-04 10:13:04	PA02	
71	2015-04-04 10:13:04	PA02	
72	2015-04-04 10:13:04	PA02	
73	2015-04-04 10:13:04	PA02	
74	2015-04-04 10:13:04	PA02	
75	2015-04-04 10:13:04	PA02	
76	2015-04-04 10:13:04	PA02	
77	2015-04-04 10:13:04	PA02	
78	2015-04-04 10:13:04	PA02	
79	2015-04-04 10:13:04	PA02	
80	2015-04-04 10:13:04	PA02	
81	2015-04-04 10:13:04	PA02	
82	2015-04-04 10:13:04	PA02	
83	2015-04-04 10:13:04	PA02	
84	2015-04-04 10:13:04	PA02	
85	2015-04-04 10:13:04	PA02	
86	2015-04-04 10:13:04	PA02	
87	2015-04-04 10:13:04	PA02	
88	2015-04-04 10:13:04	PA02	
89	2015-04-04 10:13:04	PA02	
90	2015-04-04 10:13:04	PA02	
91	2015-04-04 10:13:04	PA02	
92	2015-04-04 10:13:04	PA02	
93	2015-04-04 10:13:04	PA02	
94	2015-04-04 10:13:04	PA02	
95	2015-04-04 10:13:04	PA02	
96	2015-04-04 10:13:04	PA02	
97	2015-04-04 10:13:04	PA02	
98	2015-04-04 10:13:04	PA02	
99	2015-04-04 10:13:04	PA02	
100	2015-04-04 10:13:04	PA02	

1/1

Reject history

## QUICCA Monitor (KSA9003A)

Detail screen

## Displays real-time details for each machine

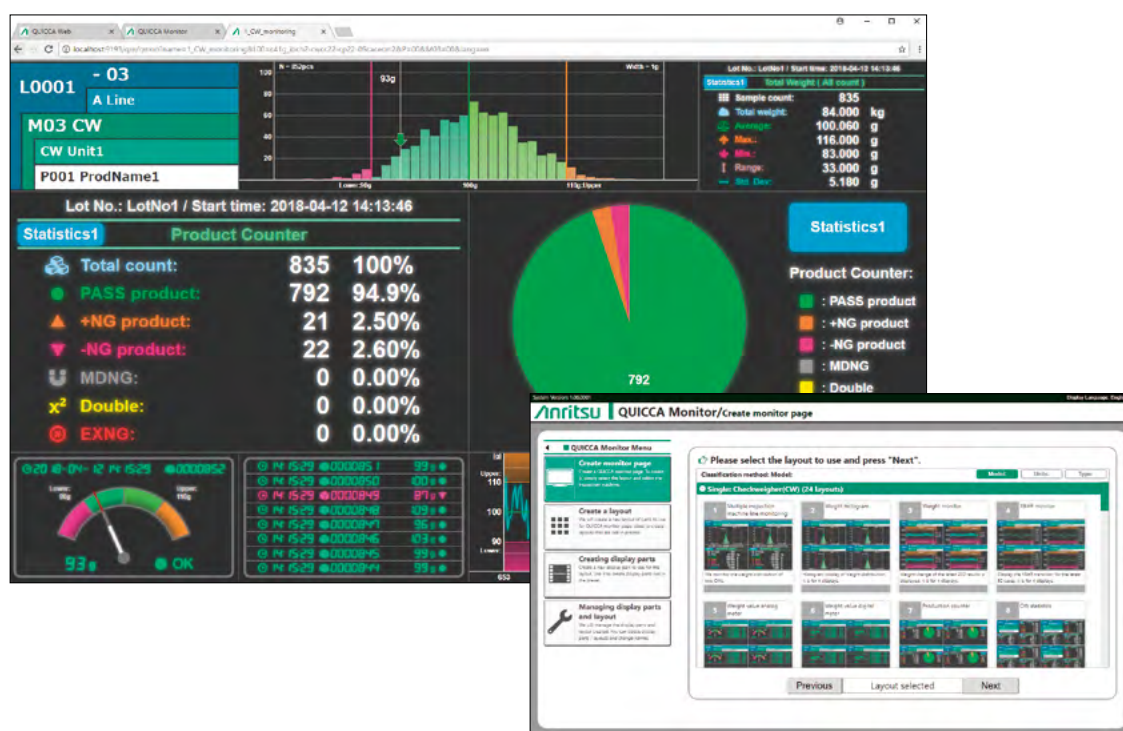
With QUICCA Monitor, individual users can customize the display with information they require, enabling quick data analysis for fast, accurate decisions.

### [Functions]

1. View production status, the number of NG products, mass value histogram from multi locations.
2. Check setting conditions of weight management, the weight variation and the occurrence of errors.

### [Results]

1. Real-time details can be checked from anywhere, eliminating the need of going to the production line.
2. Production status can be checked anytime, anywhere, allowing quick action on problems in the upstream production process to reduce the products with excessive weight.



● Easily create your own view with preset templates

## Access QUICCA from the plant floor, offices, and meeting rooms.

- Plant manager has access to plant data any time, real-time and informed communication is possible.
- Quality control manager can check threshold values of inspection systems anytime, the occurrence of defective products (NG) can be easily confirmed.
- Production manager can check current production status and statistical data anytime, the management of production status at the plant floor can be easily managed and proper instructions can be given.
- Section leader on production site can check how the production is going on every line. Problems can be handled promptly and smooth communication can be achieved with other section leaders.
- Each production line is visualized on a large monitor, all operators can share the line information.



### Production Analysis Option (KSU9003PA)

#### 1. Production Progress Monitor

View production line status, trends, and events at a glance

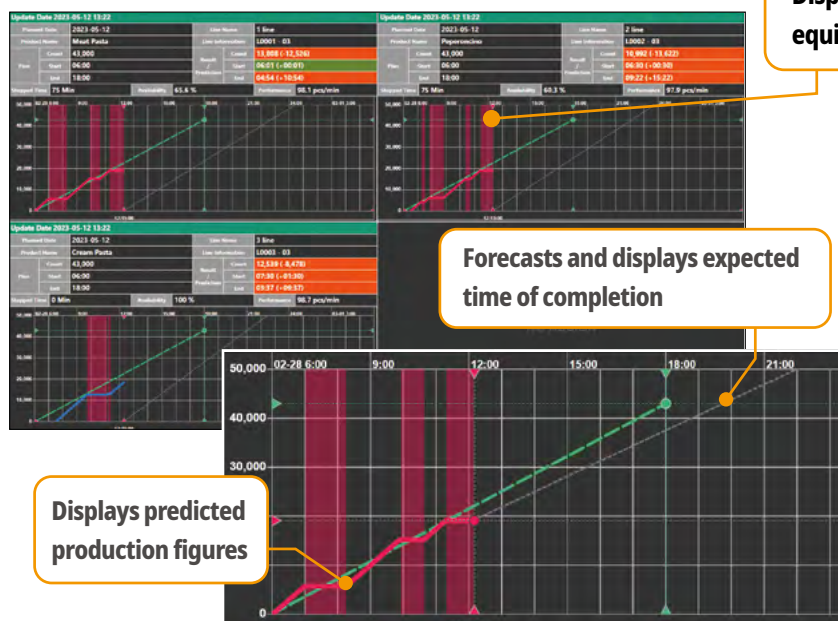
Monitor current production vs target levels and plan completion times based on actual production rates.

#### [Functions]

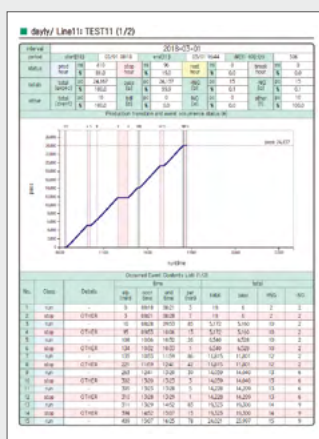
1. View the output based on the production plan, the presence of delay, and the number of NG products.
2. The presence of equipment downtime can be checked at glance and the ending time of production can be checked in advance.
3. Production results can be recorded in daily, weekly, and monthly reports.

#### [Results]

1. Production status of each line can be checked from anywhere, eliminating the need for going to the production floor.
2. The stop condition of machine can be distinguish at a glance, enabling a prompt handling of error. Knowing the completion time of operation helps proceed finishing work efficiently and reduces the product cost.
3. Electronic production report improves work efficiency of employees involved in production both directly and indirectly.



Create reports automatically by day, week, or month to provide insights on efficiency and yield of production.



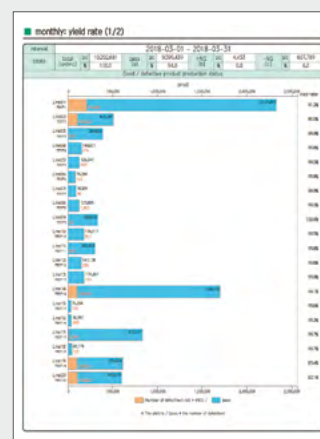
#### Daily report (production status)

Analyze production trends and any line stoppages.



#### Weekly report (operating report)

Comparing daily operating efficiencies helps spotlight improvement opportunities.



#### Monthly report (yield rate)

Comparing monthly operating efficiencies helps spotlight improvement opportunities.



## Production Analysis Option (KSU9003PA) 2. OEE Monitor

Displays operating ratio, performance and quality indicators,  
and Overall Equipment Effectiveness (OEE)

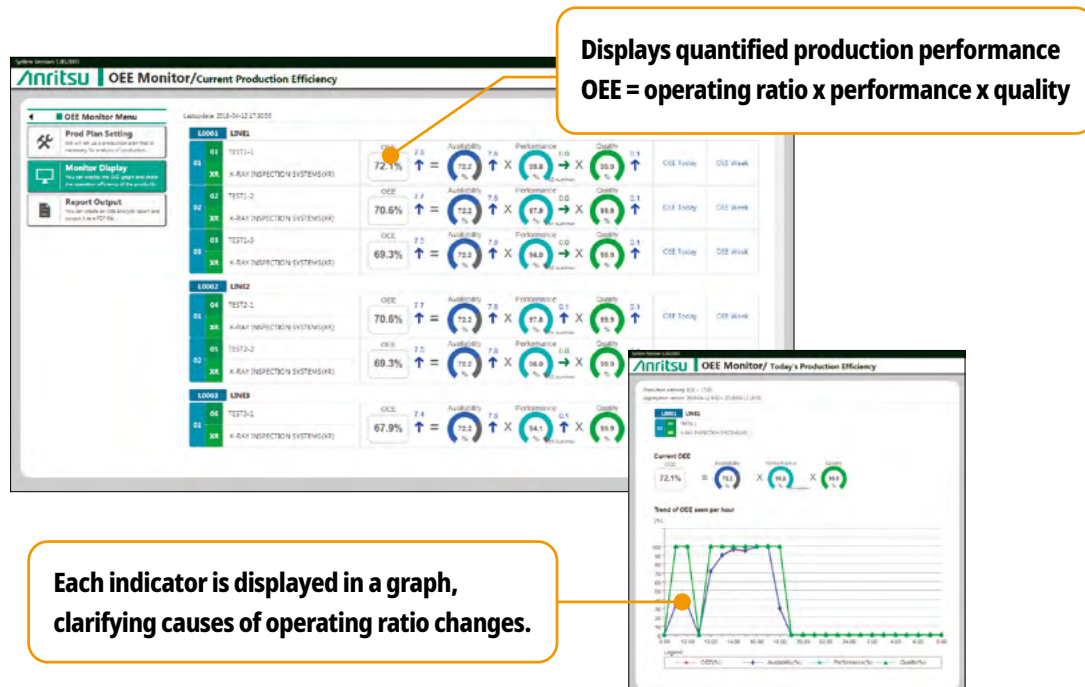
Gain an accurate understanding of overall production efficiency and the details behind the numbers so you can focus resources and attention where they are needed most.

### [Functions]

1. Displays quantified production performance on each production line with the absolute value that are multiplied with operating ratio, performance, and quality.
2. Display each index value of quantified production performance in a graph with the lapse of time

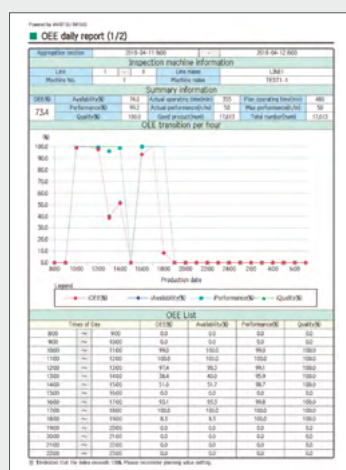
### [Results]

1. Anyone can understand overall production efficiency and the number for the improvement of activity.
2. Trends in each indicator of OEE can be compared with the lapse of time. It helps narrow down the improvement measures.



View OEE reports in daily and weekly formats.

It is useful for the improvement of production efficiency and the effective use of production facilities.



OEE daily report



OEE weekly report

## Quality Analysis Option (KSU9003PB)

## Efficiently search for inspection results and X-ray images obtained from the X-ray system

### Reducing risk through:

- Rejected product images are automatically extracted for final check prior to shipment.
- Detection limit for PASS and NG can be easily checked and criteria for threshold can be easily changed.
- View images both before and after rejected products to confirm all contaminants are removed.

### [Functions]

1. X-ray transmission images of products can be saved. The NG image can be extracted by specifying the date and production line.
2. Detection value and threshold associated with x-ray image data can be searched easily.

### [Results]

1. Specific information regarding the product can be checked when a concern for contaminants arise after the production, or when receiving complaints from consumers.
2. Detection limit and threshold associated with PASS and NG evaluation can be checked instantly.

**Extracted rejected images (NG) can be easily reviewed.**

**Filter results by effect value and NG type**

Specify the date and production line for the NG images.

## Lookout functions

## QUICCA actively ensures that the line and products are meeting your quality goals



### Reduces risk of production line stoppage

Monitors errors and alarms of all inspection systems - warnings provided if/when suitable conditions are exceeded.



### Reduces risk of data recording stoppage

Monitors available space in HDD and notify before taking up the space.



## CCP Monitoring Option (KSU9003PC)

**Automatically records the time of metal detector operation check, product name, and operator's information**

Ensure reliable daily operation verification records.

By automating the recording of operation verification, it prevents omissions and tampering of records, thereby enhancing the reliability of daily reports.

### [Functions]

1. Easily check the inspection data such as the number of PASS product, defective product (NG), the operator name, type of test pieces and inspection time soon after the inspection by a metal detector is performed.
2. The number of PASS, NG products, the inspector name, etc. can be saved automatically in a electronic daily report.

### [Results]

1. Inspection status of metal detector by each product can be checked from anywhere.
2. Inspection recording data can be changed to an electronic report from a handwritten report, minimizing the time of creating a report.

The screenshot displays the QUICCA software interface. On the left, a production line diagram shows three metal detector units. On the right, a 'Daily Report (1/1)' is shown for the date 2024-06-10. The report includes a table with columns for Product Name, Total count, Prod. Time, Kind, Result, OK, Pass NG, and Prepared. The table lists six products, all with a 'PASS' result and 'OK' status.

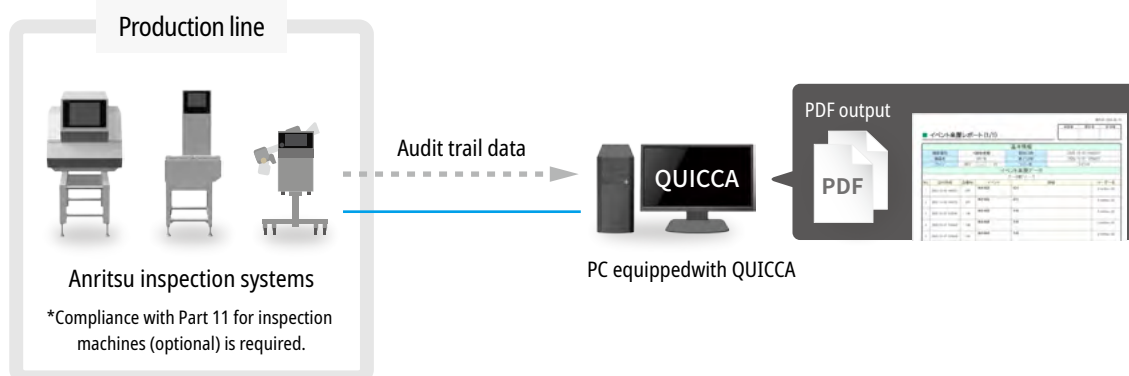
- Create CCP monitoring report
- Quickly search inspection data
- Read ID and identify the inspector and access level.

## Audit Trail Option (KSU9003PL)

**Records of the machine's operation history, action history, operation verification results, and statistical history are included**

By automatically recording the audit trail, it can be utilized for monitoring incorrect operations or deviations from guidelines, as well as for cause analysis.

\*Compliance with Part 11 for inspection machines (optional) is required.



## Traceability Option (KSU9003PD)

Measurement data and operational history of inspection equipment are recorded and centrally managed by linking them with the time

When addressing complaints from consumers or business partners, you can extract appropriate inspection records from the data output wizard and check if there were any issues in the company's process. This enhances reliability and responsiveness in complaint handling.

The code reader is connected to QUICCA via the X-ray inspection machine. It reads individual identification information and lot information of products by codes, etc., and records it in association with inspection information. This allows you to immediately identify the relevant product and accurately report information to consumers.

### 【Function】

Quickly search inspection data by individual identification code printed on each product.

### 【Result】

All inspection data can be referenced by the product's identification code, allowing the inspection history to be found accurately.



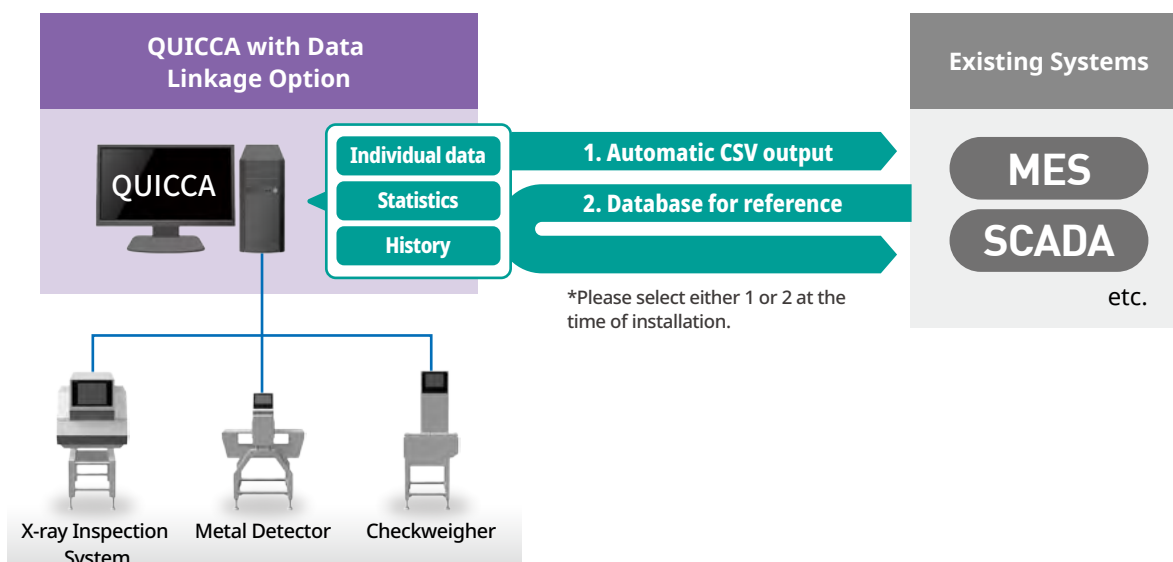


## Data Linkage Option (KSU9003PF)

Data recorded by QUICCA can be provided to other systems and utilized for various quality analyses

By adding this option, it becomes possible to transfer data recorded in QUICCA to other systems.

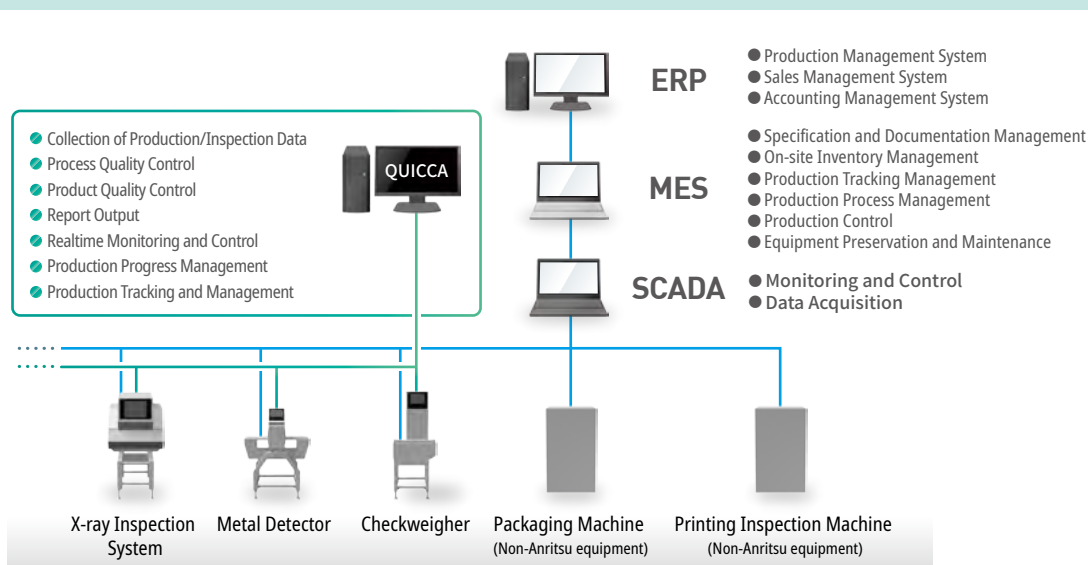
You can choose from either automatically outputting each data in CSV file format or making the QUICCA database available for reference.



## Positioning of QUICCA of plant network

QUICCA provides visualization of inspection system status, production data, and quality analysis. Installation is simple and inexpensive.

Detailed quality analysis is difficult to manage with enterprise resource planning (ERP) and manufacturing execution systems (MES). Even if ERP and MES are already in place, QUICCA can achieve a higher degree of quality assurance.



# System requirements

Item	Notes	Form supplied
PC (PC, server)	PC for QUICCA installation	USER
LAN cable	Category 5e or higher. Gigabyte and Ethernet compatible products recommended.	
LAN switch (switching hub)	Required when connecting multiple equipment. Gigabyte and Ethernet compatible products recommended.	
Cable installation and wiring work	Required for connecting PC, LAN switch, etc.	
HDD for back-up* (NAS, USB-HDD)	Required when performing data back-up.	
External HDD for expansion* (NAS, USB-HDD)	Required when saving image files in a different location. USB3.0 connection compatible products recommended.	
KSA9003A QUICCA	Includes QUICCA license. Separate connection licenses are required according to the number of machines connected.	ANRITSU
Ethernet unit	Required depending on equipment to be connected.	
Equipment	X-ray inspection system, metal detector, checkweigher, automatic combination weigher	

\*HDD (hard disk) is a consumable product. Subscription to manufacturer long-term warranty and on-site maintenance is recommended.

## Specifications

### ■ QUICCA

Maximum number of connectable machines *	99 Machines can be connected within the limit of maximum recording capacity
Maximum recording capacity*	3000 products/min (all lines) 1,500 items/min (when only X-ray inspection system is connected for recording of transmitted images) When only X-ray inspection system is connected for recording of transmitted images, storage capacity for the X-ray machine is calculated as double.
Maximum number of recordable data	Depends on free disk space on PC. Maximum 4 million data/day 1 million to 4 million data/1 GB (Individual data, Statistics data, History data) 10,000 to 30,000 data/1 GB (image data) X-ray images can be saved to multiple external hard drives such as NAS.

\*Depending on software version of machines or devices connected to QUICCA, a part of functions may be limited.

\*The number of maximum storage data varies according to disk space, equipment to be connected, and data to be recorded.

\*The number of image recording data varies according to the size of product and image format, etc.

\*Old recording data will not be deleted automatically. It can be deleted manually by specifying the range of date or it can be deleted automatically by setting the data holding period.

### ■ Computer operating environment

#### Server

OS	Windows 10 (Pro/Enterprise) (64bit) Windows 11 (Pro/Enterprise) (64bit) Windows Server 2019 (Standard/Datacenter/Essentials) Windows Server 2022 (Standard/Datacenter/Essentials)
CPU	8th generation or higher Intel® Core i5 Processor 6-core or higher 2.80 GHz or higher
Memory	8 GB or higher
HDD	2 GB or more free disk space for installation in addition to that required for data saving When using an external hard drive for saving image files and video files, HDD with USB 3.0 is recommended.
Display	1024 × 768 or higher
LAN	Ethernet (100BASE-TX, 1000BASE-T) Category 5e or higher is recommended
Required browser	Microsoft Edge or Google Chrome

\*When displaying and recording all of the images taken by an x-ray inspection system, processing capacity of image recording vary depending on the operating system. When connecting an X-ray inspection machine, select a Windows Server OS. Please contact Anritsu sales representatives for latest supported operating system.

#### Client

OS	Windows 10 (Pro/Enterprise) (32bit/64bit) Windows 11 (Pro/Enterprise) (64bit) *Server OS is not supported since it has the operating environment to run Viewer.
CPU	Intel Core i3 Processor 2.80 GHz or higher
Memory	4 GB or higher
HDD	Depends on functions used. 100 MB or more available capacity for installation
Display	1024 × 768 or higher
LAN	Ethernet (100BASE-TX, 1000BASE-T) or wireless LAN connection
Required browser	Microsoft Edge or Google Chrome

\*When a server PC satisfies the operating environment, up to three PCs can be connected from clients.

Intel, and Intel Core are trademarks of Intel Corporation in the U.S. and/or other countries.

Microsoft, Windows, Windows Server, and Microsoft Edge are registered trademarks or trademarks of Microsoft Corporation in the United States and/or other countries.

Google Chrome is a registered trademark of Google LLC.

Other company names, product names, and service names are the trademarks or registered trademarks of their respective companies.



Note

[illegible]



---

## ANRITSU CORPORATION

5-1-1 Onna, Atsugi-shi, Kanagawa, 243-8555, JAPAN  
TEL: +81-46-296-6699 FAX: +81-46-296-6786  
<https://www.anritsu.com/product-inspection>

© ANRITSU CORPORATION 2018  
ISO14001, ISO9001 Certified

---

**Anritsu Industrial Solutions (Shanghai) Co., Ltd.**  
Room 703-704, Sandhill Central, No.505 Zhangjiang Road, Pudong New Area, Shanghai 201210, P.R. China  
TEL: +86-21-5046-3066

**ANRITSU INFIVIS B.V.**  
Grubbenvorsterweg 10 5928NX, Venlo, the Netherlands  
TEL: +31(0)20-2254220

**ANRITSU INFIVIS INC.**  
701 Innovation Drive, Elk Grove Village, IL 60007, U.S.A.  
TEL: +1-847-419-9729 FAX: +1-847-537-8266

- Some products shown in this catalog may not be available in your country or region. Contact our sales representatives for details.
- To ensure proper operation, read the Operation Manual before using the machine.
- In addition to daily inspection, a full maintenance inspection should be completed annually.

---

Specifications are subject to change without notice.  
No part of this catalog may be reproduced without our permission.