



XR75
A.L.L.
ADVANCED LONG LIFE TECHNOLOGY

XR75 IP69k Sanitary X-ray

Rugged, watertight construction

Sanitary design

Outstanding detection performance

Low TCO



1000mm solution shown

SUPERB PERFORMANCE AND HYGIENE IN HARSH WASHDOWN ENVIRONMENTS

Ideal for packaged products in facilities with stringent sanitary standards, the IP69k model combines top detection performance with full high-pressure washdown protection and sanitary construction.

- **Rugged, Watertight Construction:** The IP69k rating applies to the entire machine for worry-free high-pressure, high-temperature cleaning.
- **Sanitary Design:** The IP69k model is engineered to promote thorough water runoff and eliminate any potential harborage points.
- **Same Awesome Detection Performance as Standard Models:** Performs the same as standard XR75 models, which include high resolution detectors, powerful signal processing, and precise software tools. Anritsu consistently outperforms competitors in detecting small metals and low-density foreign material like glass, stones, and bones.
- **Low TCO:** Advanced Long Life (A.L.L.) technology delivers up to 300% longer tube and detector life with better detection at lower power.

Full IP69k protection



STANDARD FEATURES

- Anritsu HD Imaging w/beryllium tube
- Solid frame
- IP69K washdown rating
- Sanitary design
- Upgraded 400W AC motor
- Long-life tube & detector
- Auto-learn product setup wizard
- Sealed sanitary belt
- Tool-free belt removal
- Image & reject logs
- 10+ software detection tools
- QUICCA capable



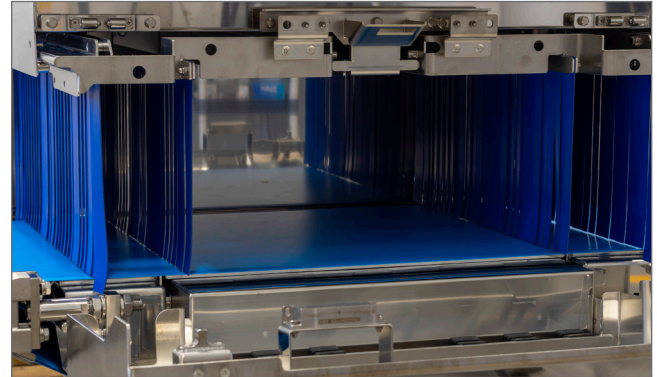
Polished, accessible inspection area



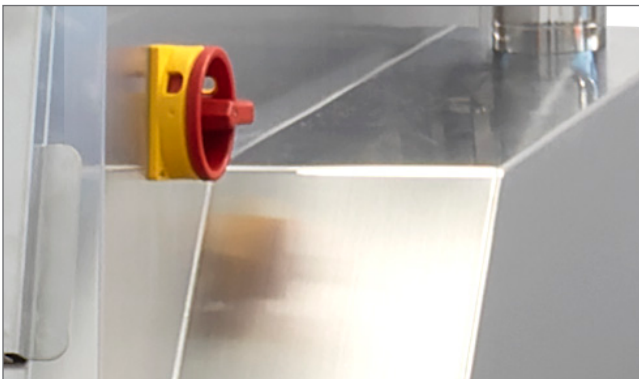
Protective screen cover



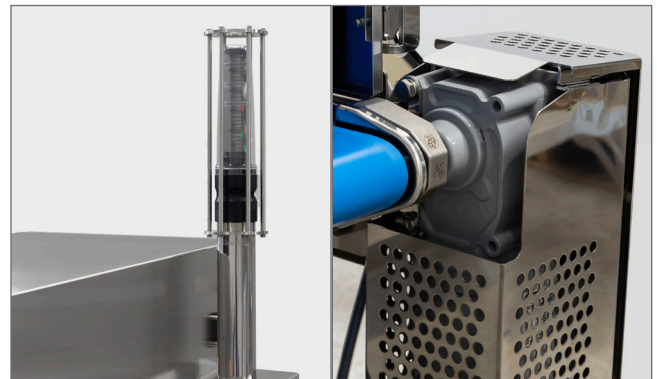
Heavy-duty solid rollers, pillow block bearings, blue sealed belt



Tool-free curtain & belt removal

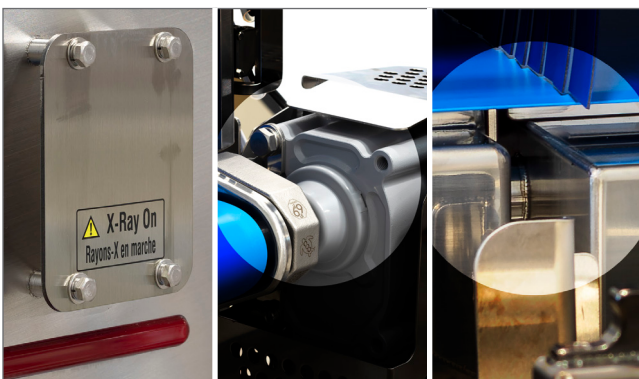


Fully sealed welds throughout



Robust stacklight cage

Upgraded 400W AC motor

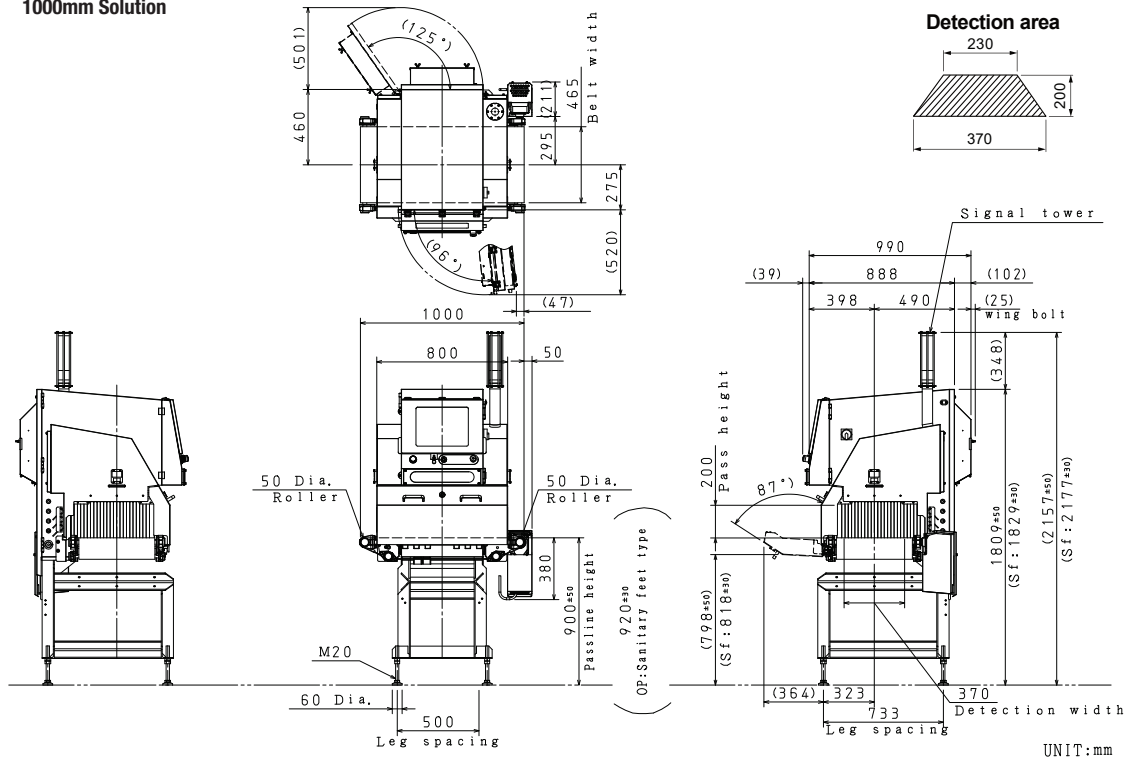


Standoffs thruout, including labels, motor, and decking

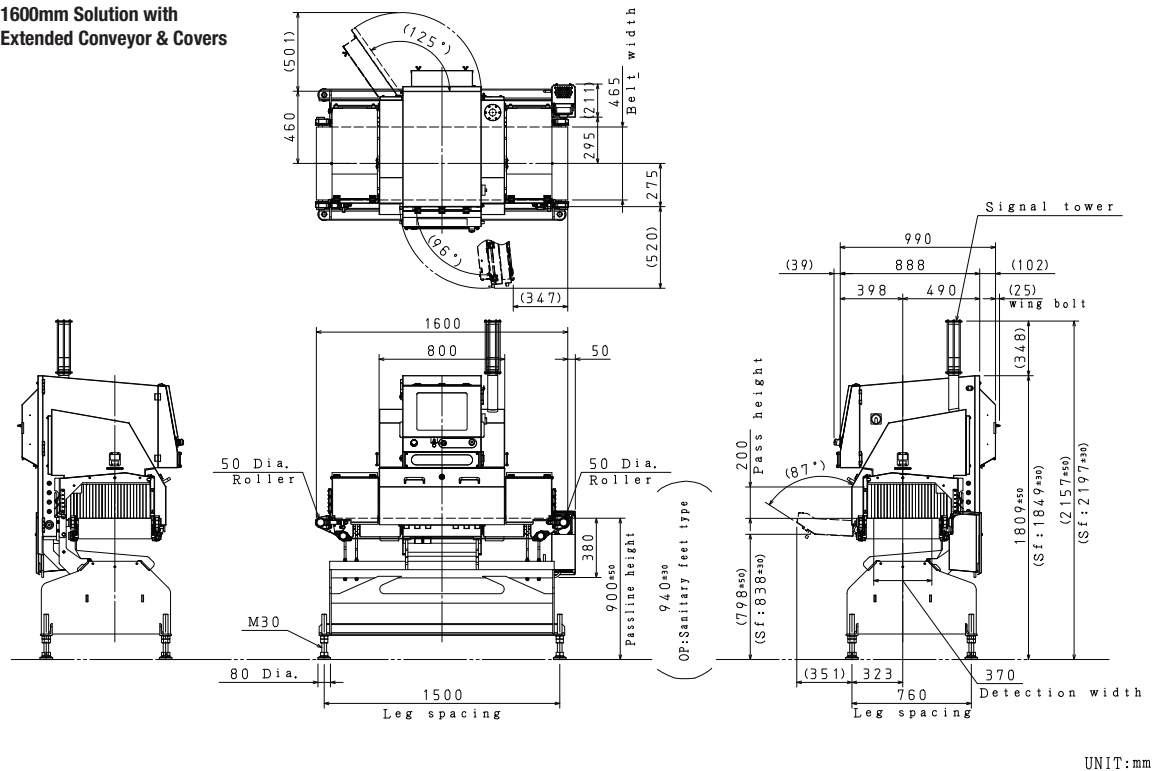


Solid frame promotes drainage and eliminates harborage points
(Shown with standard feet. Sanitary feet are optional.)

1000mm Solution



1600mm Solution with Extended Conveyor & Covers



SPECIFICATIONS

Model	KXE7534AMCLE
X-ray output	Tube voltage 30 to 80kV, Tube current 0.4 to 3.3mA, Output 100W
Product size	Maximum width: 370mm, Maximum height: 200mm (see Detection Area in drawing)
Dimensions	1000mm solution: 1000mm L x 990mm D x ≈2000mm H 1600mm solution with extended conveyor & covers: 1600mm L x 990mm D x ≈2157mm H
Belt width	430mm (17") (Please note max product width above.)
Belt speed ¹	10–40m/min, maximum 25kg 40–80m/min, maximum 10kg
Power requirements ²	200 to 240VAC, single phase, 50/60 Hz, 2.5kVA, 1500VA or less (standard)
Water/Pressure	Maximum water pressure 8MPa (equal to IP69K), maximum water temperature 40°C
Sanitary feet option	Set of 4 sanitary feet: \$840
Passline heights	900mm ±50 on 1000mm long unit with standard feet 920mm ±30 on 1000mm long unit with sanitary feet 900mm ±50 on 1600mm long unit with standard feet 940mm ±30 on 1600mm long unit with sanitary feet

1. Belt speed can be set individually per product recipe.

2. The inrush current shown above is for 200VAC. It varies with input voltage.

ABOUT ANRITSU

With more food inspection x-ray systems installed globally than any other provider, Anritsu offers the best combination of performance, reliability and price.

Founded in 1895, Anritsu is a billion-dollar global powerhouse based in Japan with a legacy of innovation and meticulous engineering in electronics, telecom and testing.

FULL SOLUTION PROVIDER

X-RAY SYSTEMS



CHECKWEIGHERS



METAL DETECTORS

