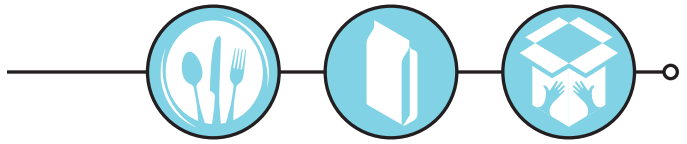




DURAVANT

INNOVATION THAT WORKS.



FOOD PROCESSING  
PACKAGING  
MATERIAL HANDLING

Duravant Equipment and Solutions



## PROTEIN PROCESSING SOLUTIONS

Pages 8-17



## FOOD SORTING & HANDLING SOLUTIONS

Pages 18-25



DELIVERING GLOBAL SOLUTIONS IN FOOD PROCESSING,  
PACKAGING AND MATERIAL HANDLING.



PACKAGING  
SOLUTIONS

Pages 26-35



MATERIAL HANDLING  
SOLUTIONS

Pages 36-43



Pages 44-47

Your trusted partner for aftermarket  
service, parts, technical expertise,  
digital solutions, and customer support.

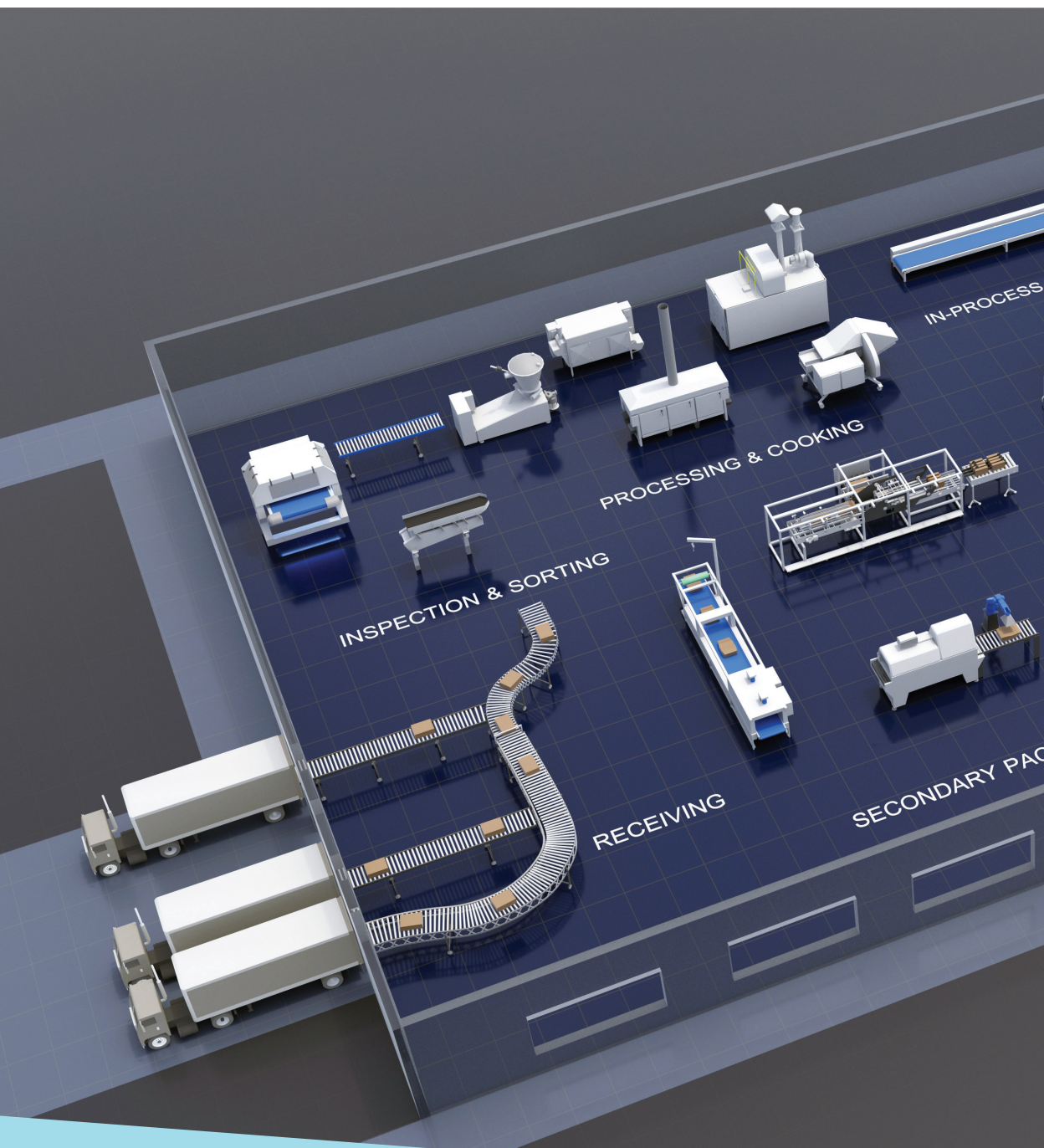
[Duravant.com](https://www.duravant.com)





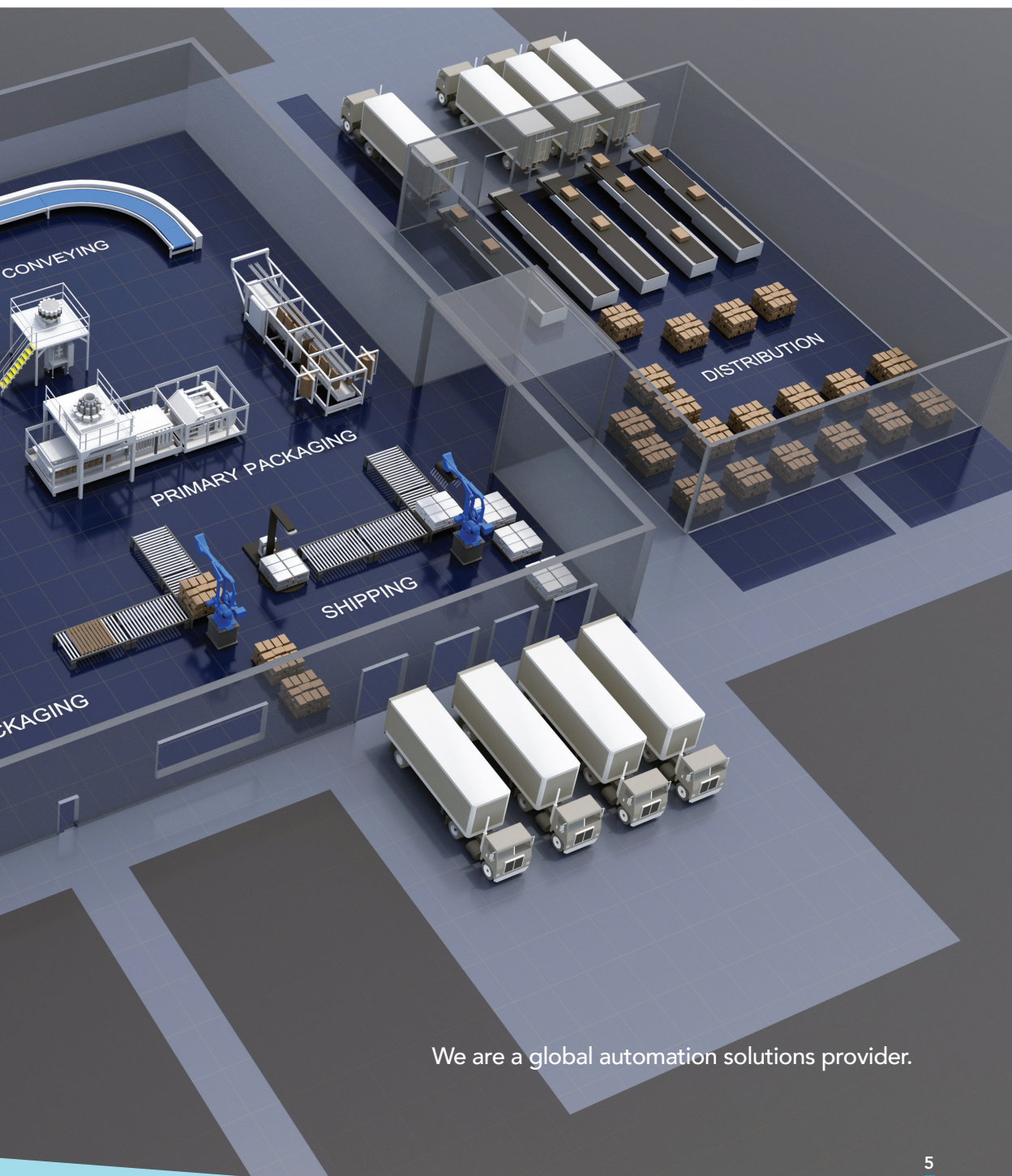
# DURAVANT

**Duravant's expertise in food processing, packaging and material handling** delivers complete solutions that optimize productivity, efficiency and profitability for our customers. We understand the demanding environment of your end-to-end operations, and that's why Duravant and our operating companies partner to offer innovative, highly-engineered



# AUTOMATION SOLUTIONS

equipment and integration services backed by full lifetime support. We serve multiple industries, from food & beverage, agriculture, consumer goods & retail, health & beauty, ecommerce, pharmaceutical, distribution, to wine & spirits and beyond. **You can depend on Duravant to be your complete partner.**



We are a global automation solutions provider.



# DURAVANT

Duravant is a leading global automation equipment company with a premium portfolio of products, services and integrated solutions that optimize safety, productivity, efficiency and connectivity for the world's producers and movers of high demand goods.

## INDUSTRIES



AGRICULTURE



AIRPORT BHS



AUTOMOTIVE



BAKERY &  
CONFECTION



BEVERAGE



BREWING



FOOD



FRUIT & VEGGIE



HEALTH &  
BEAUTY



HOME CARE



INTRALOGISTICS



LAWN & GARDEN



PARCEL  
POST



PET FOOD



PHARMACEUTICAL



PLASTICS



PRINTING



RETAIL

## BENEFITS



CIRCULAR  
PRODUCTS



CUSTOMIZABLE



ENERGY  
SAVING



FULLY  
INTEGRATES



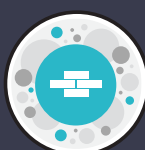
FOOD SAFETY



HIGH  
PERFORMANCE

# AUTOMATION SOLUTIONS

HELPING THE WORLD'S MOST TRUSTED BRANDS  
BRING GOODNESS TO LIFE.



BUILDING  
MATERIALS



BULK FOOD



CPG



DAIRY



DISTRIBUTION



ECOMMERCE



MATERIAL  
HANDLING



MEAT / POULTRY / FISH



METAL WORKING



MINERALS/  
CHEMICALS



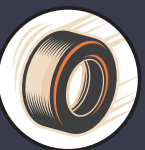
PACKAGED ICE



PACKAGING



SNACKS



TIRE  
HANDLING



WINE & SPIRITS



QUALITY  
CONTROL



QUICK  
CHANGEOVERS



REDUCES  
GHG



REDUCES  
FOOTPRINT



REDUCES LABOR



REDUCES WASTE



**Foodmate is a global poultry processing equipment solutions provider** and partner to the world's most trusted poultry processing companies. Foodmate brings innovative technology and cost-effective solutions to poultry processing automation. Our machines optimize yields, improve quality, and reduce labor costs while offering a low cost of ownership. Foodmate maintains a commitment to being the industry's go-to partner for secondary poultry processing equipment. Our systems are designed to be simple to use, deliver the highest efficiency, and help our customers achieve the highest yields.

## CHICKSORT

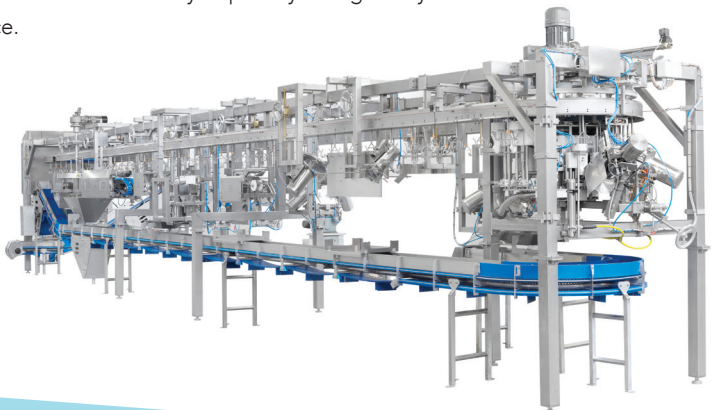
### DIGITAL INTELLIGENCE

With ChickSort 4.0 Foodmate provides the poultry processing market with the most advanced control, grading and distribution system.



### CUT-UP SOLUTIONS

The Foodmate cut-up equipment is available in many shapes and sizes to be able to provide automation solutions for the wide variety of poultry cuts globally. Both for retail and food service.



# POULTRY PROCESSING



## INDUSTRIES



POULTRY

## BENEFITS



HIGH  
PERFORMANCE



REDUCES  
LABOR



REDUCES  
WASTE



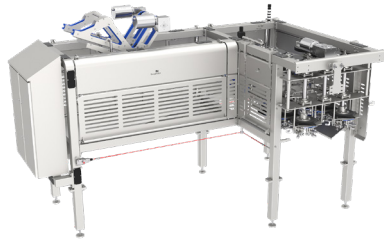
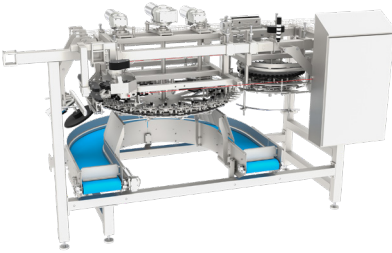
CUSTOMIZABLE



REDUCES  
FOOTPRINT

## REHANGERS

Foodmate offers a wide range of rehangers, such as whole chicken rehangers and leg rehangers to facilitate intelligent dark meat deboners.



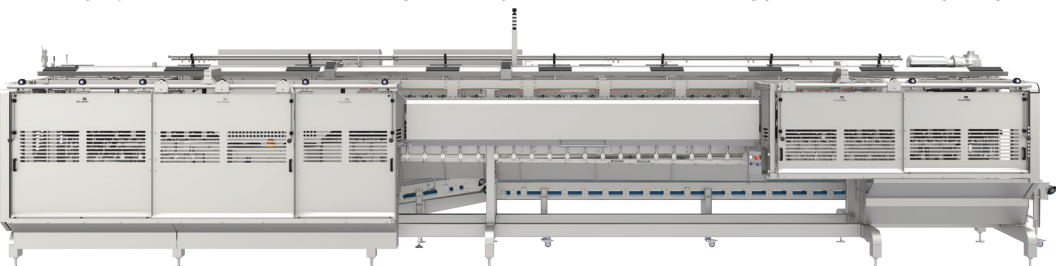
## WHITE MEAT DEBONING

The Foodmate white meat deboning equipment is designed to deliver the highest output on a small footprint without compromising on the efficiency and flexibility.



## DARK MEAT DEBONING

Foodmate provides efficient and intelligent dark meat deboning solutions with exclusive x-ray technology making it possible to measure bone length and adjust the machine accordingly to achieve the highest yields.

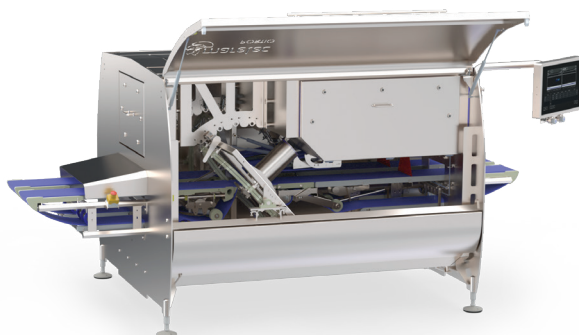




**MARELEC is a global supplier** of intelligent portioning, weighing and grading solutions for the poultry, meat and fish processing industries. MARELEC offers reliable, efficient, and flexible processing solutions that are tailored to each customer's specific needs in order to maximize productivity and keep cost to a minimum. As a global leader in food processing technologies, MARELEC will ensure that our customers are working with a service-oriented company that listens to their needs and is a flexible partner with a human approach, allowing you to not only become more profitable but also ensure a future for your company.

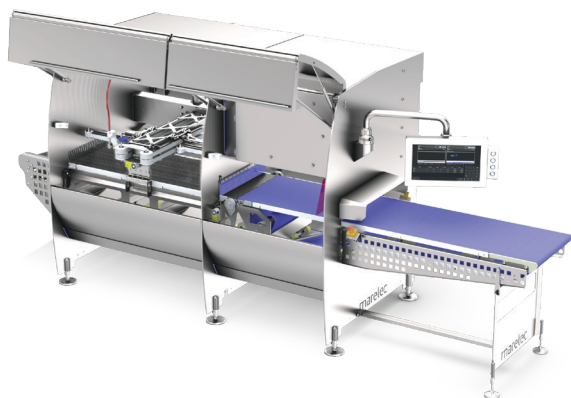
#### INTELLIGENT PORTION CUTTER

MARELEC is a world market leader with the PORTIO, an intelligent portion cutter that cuts fresh or crust frozen poultry, fish or meat products into portions of programmed fixed weight, fixed thickness or a combination of the two. MATRIX P Software calculates how to leave zero waste on the primal, to maximize the yield.



#### INTELLIGENT WATERJET CUTTER

The PORTIO JET has been developed to maximize yields when cutting poultry fillets or deboned leg meat into predetermined shapes of fixed weight. The camera/laser combination scans to the highest accuracy, before the intelligent cutting algorithm calculates the optimal cutting pattern.



# PROTEIN PROCESSING



## WEIGHING

MARELEC offers different kinds of weighing solutions. With a background in the fishing industry, the equipment is produced to a high quality standard. Its robust and waterproof construction means the equipment is extremely durable.



### INDUSTRIES



MEAT



POULTRY



SEAFOOD

### BENEFITS



REDUCES WASTE



HIGH PERFORMANCE



CUSTOMIZABLE



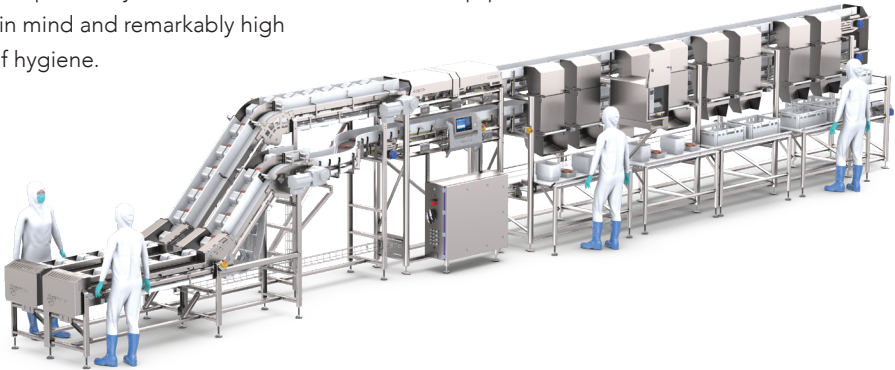
REDUCES LABOR



REDUCES FOOTPRINT

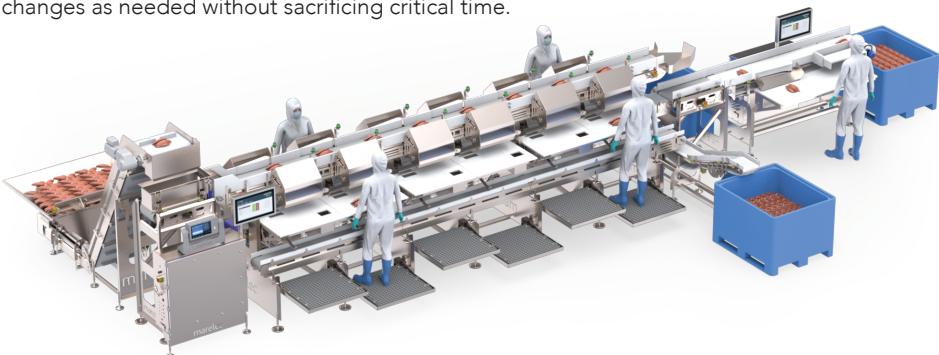
## FAST, ACCURATE AND HIGHLY ADVANCED GRADING SOLUTIONS

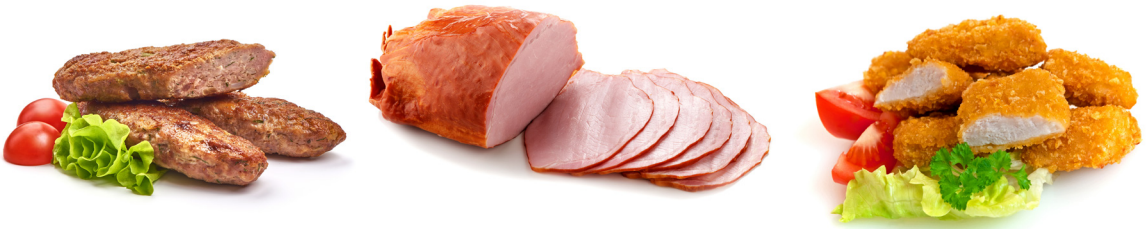
By using the latest weighing technology and advanced software we are able to design and build highly accurate and fast grading systems. MARELEC has many years of experience and offers grading solutions that specifically suits the customers needs. All equipment is built with robustness in mind and remarkably high standards of hygiene.



## INTELLIGENT DEBONING AND TRIMMING

Yield and capacity are critical factors in a chicken and fish processor's profitability. MARELEC has recently developed an intelligent trimming line that will track yield, capacity, and trim quality for each operator. By having this data available in real time throughout production, you may make changes as needed without sacrificing critical time.





**Henneken is manufacturer and service provider** of innovative food processing machinery for the meat, poultry and seafood industries. Henneken's portfolio of highly engineered equipment solutions includes vacuum tumblers, tenderizers, injectors, brine mixers, flatteners and product handling and loading systems. The company has consistently been at the forefront of designing solutions that meet the needs of food processors who demand quality and safety, while maximizing productivity and yields.

## VACUUM TUMBLERS

Henneken vacuum tumblers deliver better protein activation with 3-D tumbling for a more consistent, intense marination over every piece of product. Optional cooling and/or defrosting options are available.



## BRINE INJECTORS

Henneken injectors ensure accuracy and consistency. Individually retracting needles get more brine into bone-in or boneless meat, delivering more weight, better flavor, and ultimately more profit.



# PROTEIN PROCESSING



## MIXERS

Henneken brine mixers deliver the right brine mix without lumps ensuring a better and smoother solution. The venturi effect of the machine results in a higher quality mix.



### INDUSTRIES



MEAT



POULTRY



SEAFOOD

### BENEFITS



REDUCES  
WASTE



HIGH  
PERFORMANCE



CUSTOMIZABLE



REDUCES  
LABOR



REDUCES  
FOOTPRINT

## TENDERIZERS

Henneken tenderizers deliver improved protein activation, improved binding, and product tenderness.



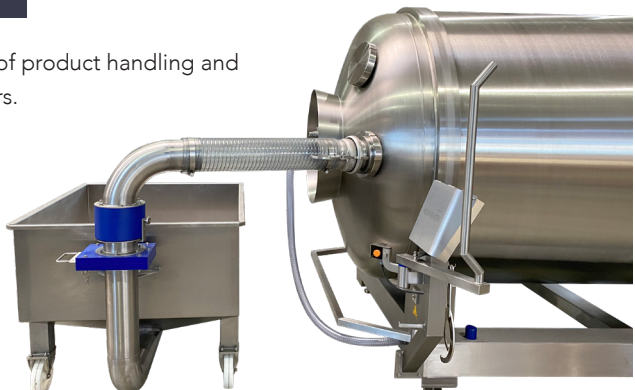
## FLATENERS

Henneken flatteners have self-centering belts and can be cleaned quickly and easily.



## PRODUCT HANDLING & LOADING

Henneken manufactures a wide array of product handling and loading equipment for food processors.





**Recognized as a premium manufacturer** of highly engineered food processing equipment and systems, Marlen's products have long set the standard for performance, consistency, accuracy and product integrity.

#### GRILLING & SEARING

Marlen's Afoheat line offers a wide range of solutions for searing, bar marking, braising, roasting, and grilling. Technologies are available in direct flame or infrared and work across all applications: meat, poultry, fish, bakery, vegetable, and other food products.



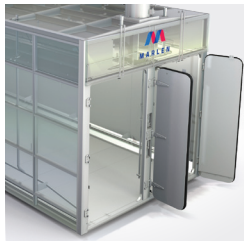
#### CONTINUOUS THERMAL PROCESSING EQUIPMENT

Marlen's thermal processing equipment has long led the industry through innovation; as a result its portfolio is backed with patents for unique food processing solutions and systems. Continuous solutions range from spiral ovens and chillers, sous vide cookers, linear multi-zone roasting ovens, infrared and water pasteurizers, vertical crusters, linear freezers and more.



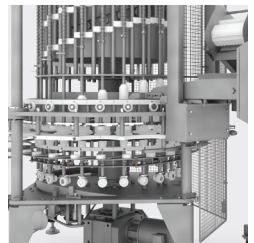
#### BATCH OVENS & CHILLERS

Marlen's robust industrial food processing ovens, smokehouses, dehydrators and blast chill cells are custom designed around your product and needs, with Smart Balance technology to enhance airflow and improve uniformity.



#### FILLING

Marlen's filling equipment uses innovative technology to solve hard-to-fill product problems. Our equipment is designed to fill non-liquid solids, dry or marinated product, and even products previously considered "hand fill only" in high volumes, accurately and without damage.





## VACUUM STUFFING & PUMPING

Marlen OPTI series vacuum pumps feature a twin piston design with a variety of hopper options engineered to match product requirements. This series is available in multiple capacities ranging from 10,000 to 34,000 pounds per hour.



## HIGH PRESSURE EXTRUSION

Marlen's OPTI-Xtrude is designed for the continuous extrusion of viscous, shear-sensitive corn masa and potato-based snack foods. From potato rings and twists to corn chips and snacks, extruded products have improved product appearance and a higher product quality.



### INDUSTRIES



BAKERY & CONFECTION



PET FOOD



QUICK  
CHANGEOVERS



HIGH  
PERFORMANCE



FOOD



POULTRY



REDUCES  
WASTE



ENERGY  
SAVINGS



FRUIT &  
VEGGIE



SEAFOOD



REDUCES  
FOOTPRINT



CUSTOMIZABLE



MEAT



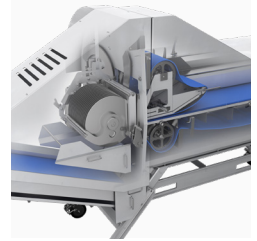
SNACKS



REDUCES  
LABOR

## SIZE REDUCTION

Marlen's industry leading size reduction equipment includes slicers, dicers, and shredders, known for unmatched versatility and



accuracy for fresh or cooked products. These state-of-the-art, continuous flow machines allow our customers to take control of their processing with less handling, improved hygiene and reduced labor costs.

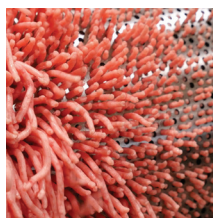
## FOOD HANDLING & PLANT HYGIENE

Marlen offers a broad range of stainless food handling and hygiene solutions. From ergonomically designed rock over dumpers and lifts that minimize operator strain and injury, to custom built trolleys, trucks, and racks that maneuver with ease and maximize handling in the harshest environments.





A DURAVANT COMPANY



**POSS is the global leader** in advanced mechanical separation solutions.

Our cutting-edge separators are engineered to maximize yield, reduce temperature rise, enhance product quality and minimize cost of ownership.

In addition to our renowned separators, POSS manufactures a wide range of ancillary equipment and partners with industry trusted suppliers to provide complete, integrated solutions.

At POSS, we deliver reliable, efficient, and customizable solutions tailored to meet the unique needs of our clients. With decades of expertise, we are committed to helping our customers achieve superior results through innovative technology and seamless integration.

## SEPARATORS

At the heart of every POSS installation is the mechanical separator. From 1000 lbs/hr to over 37,000 lbs/hr, we manufacture a separator to suit your requirements. Every POSS separator can be outfitted with an array of tooling appropriate for various applications. Whatever the separation application, POSS has a solution.



## ANCILLARY EQUIPMENT

To support the separator, POSS manufactures, distributes, and integrates a wide range of ancillary equipment. Combo dumpers, screw conveyors, belt conveyors, metal detectors, x-rays, pre-breakers, meat pumps, heat exchangers, box filling stations, plate freezer filling arms, takeaway conveyors and floor scales are all among the wide range of equipment that POSS seamlessly integrates into any process.



# PROTEIN PROCESSING



## TURN KEY

POSS Turn-Key Lines represent decades of innovation and expertise in separation technology, designed to deliver unparalleled efficiency and reliability. At the heart of each line is our advanced mechanical separator, a proven solution for maximizing yield and product quality.

Surrounding this core, we provide as much or as little ancillary equipment as our customers require, ensuring a tailored solution that fits their unique processing needs.

From conveyors and pumps to detection systems and blending equipment, every component is designed to work seamlessly together. POSS integrates every piece of equipment into a cohesive and efficient system, creating a smooth and dependable separation process. Our Turn-Key Lines are controlled through state-of-the-art Human-Machine Interface (HMI) touch screens, offering user-friendly and intuitive controls. The system operates automatically, requiring minimal operator oversight while maintaining high levels of precision and performance.

By combining innovative technology with a customer-focused approach, POSS Turn-Key Lines provide a complete solution that simplifies operations, reduces labor requirements, and enhances overall productivity. Whether outfitted with a simple setup or a fully equipped processing line, our systems are engineered to deliver consistent and exceptional results.

### INDUSTRIES



MEAT



POULTRY



SEAFOOD

### BENEFITS



REDUCES  
WASTE



HIGH  
PERFORMANCE



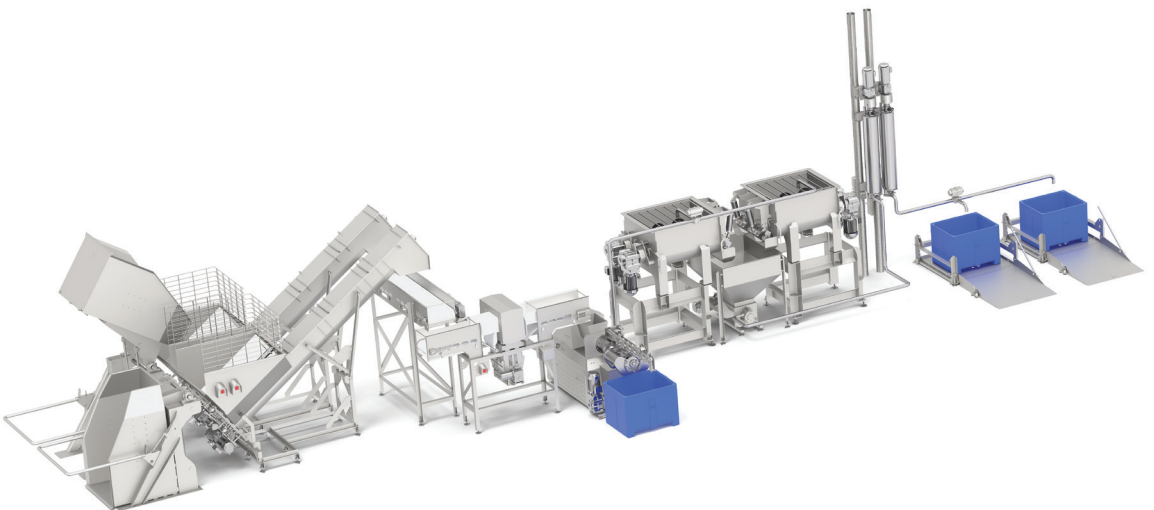
CUSTOMIZABLE



REDUCES  
LABOR



REDUCES  
FOOTPRINT

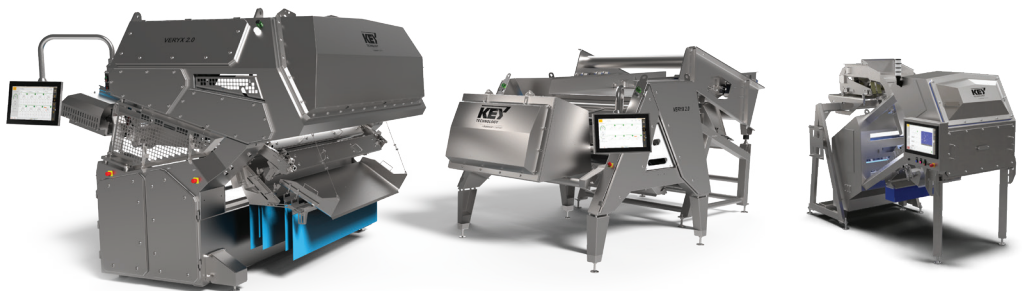




**Key Technology is a global leader** in the design and manufacture of automation systems including optical sorters, conveyors, and other food processing equipment. Applying processing knowledge and application expertise, Key helps customers improve quality, increase yield, and reduce costs. A proactive partner committed to creating long-lasting customer relationships, Key listens to process challenges and offers seamlessly integrated, customized solutions that create real impact and ROI.

### OPTICAL SORTING

Key Technology optical sorting systems automate and improve the process of product quality inspection and grading, allowing food processors to deliver a safe product that meets their customers’ quality requirements. Key sorters detect and remove in a single pass undesirable product defects and foreign materials, analyzing the color, structure, shape, size or biochemical profile of every object in the processing line.



### DATA ANALYTICS

Key Discovery is a data analytics software that helps food processors gain valuable insights into their product quality and line management process. By capturing and processing information about every object flowing through the line and the sort process, Key Discovery reveals patterns and trends that deliver actionable information to improve sorting as well as upstream and downstream line operations.

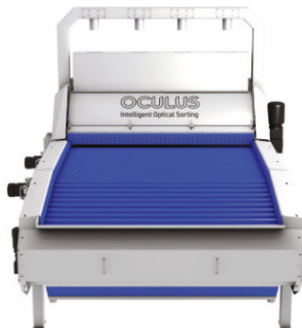


# FOOD SORTING & HANDLING



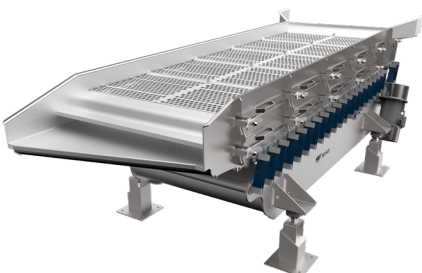
## SORTING SOLUTIONS FOR ROOT CROPS

Key Technology's Herbert OCULUS is a compact, high-performance optical sorter that delivers more accurate, efficient, and consistent sort results for whole products. Oculus identifies and sorts extremely easily and effectively for a range of surface abnormalities and diseases, including bumps and notches, skin discoloration, green and dark colors and common defects like green and mechanical damage, common scab, cracks and black dot. With higher throughput, increased grading flexibility and maximum defect detection, OCULUS provides better quality produce for end users and lower costs for growers, packers and processors.



## CUSTOMIZED VIBRATORY CONVEYING

Key's tailored food handling systems are designed around specific product characteristics and line requirements. Our broad product line includes advanced process systems that seamlessly integrate with other Key equipment for efficient grading, distributing, de-watering, inspecting, air cleaning, mixing and preparation. All Key conveyors are designed to ensure robustness, minimizing maintenance, maximizing uptime, and reducing the total cost of ownership.



## INDUSTRIES



FRUIT & VEGGIE



SNACKS



DAIRY



MEAT/POULTRY/  
FISH



FOOD



PET FOOD



HIGH  
PERFORMANCE



REDUCES  
LABOR



REDUCES  
WASTE



CUSTOMIZABLE



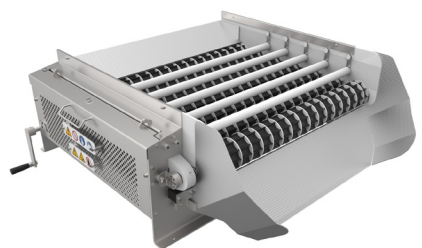
FULLY  
INTEGRATES



QUALITY CONTROL

## PROCESSING

Key's engineers apply advanced design principles and a wealth of experience to develop customized forms of vibratory solutions in the industry for hundreds of different products. Known for their reliability and ease of maintenance, Key Technology processing solutions are built to the highest performance and sanitation standards to minimize lifecycle cost and maximize food safety.

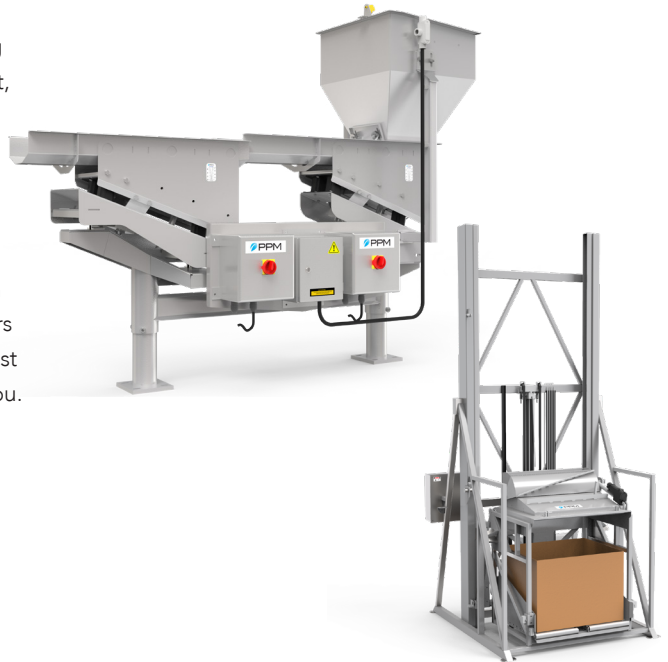




**PPM Technologies** is a globally recognized manufacturer of industrial food processing equipment for conveying, frying, seasoning, and cooling applications. For over a century, PPM has combined passion and expertise to provide uniquely engineered solutions with new and innovative products designed to improve quality, increase efficiencies, and reduce costs.

#### MATERIAL HANDLING

PPM is proud to offer an industry-leading selection of material handling equipment, all of which feature hygienic, low-energy designs that allow customers to safely and efficiently distribute, feed, or store even the most fragile products without fear of damage. With a diverse range of technology that includes everything from vibratory and horizontal motion conveyors to bucket elevators and tote dumpers, rest assured that PPM has the conveyor for you.



#### SEASONING & COATING

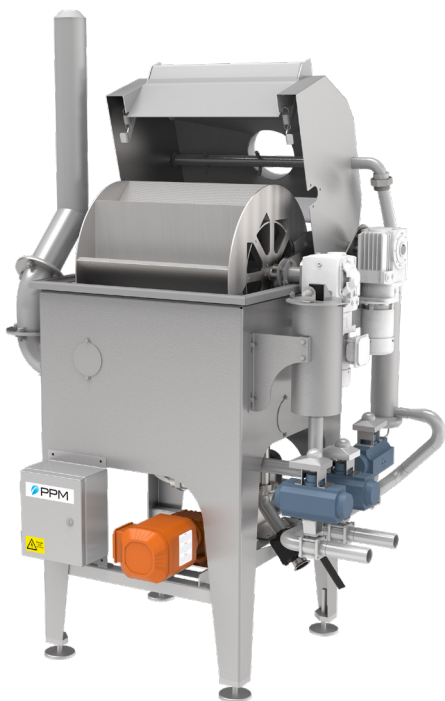
PPM's innovative seasoning and coating solutions are a testament to years of research, trials, and customer feedback, through which we have developed a versatile range of equipment designed to enhance the taste, texture, and appearance of your favorite food products.





## THERMAL PROCESSING

PPM's fryers continue to redefine industry standards through the innovation and development of new and reliable safety features, uniquely efficient heating systems, and advanced filtration technology designed to protect oil quality, reduce downtime and save operating costs.



### INDUSTRIES



AGRICULTURE



BAKERY & CONFECTION



BULK FOOD



DAIRY



DISTRIBUTION



FOOD



FRUIT & VEGGIE



MEAT/POULTRY/  
FISH



PET FOOD



SNACKS

### BENEFITS



CUSTOMIZABLE



ENERGY  
SAVING



FULLY  
INTEGRATES



HIGH  
PERFORMANCE



QUICK  
CHANGEOVERS



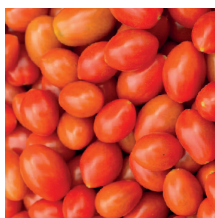
REDUCES  
FOOTPRINT



REDUCES  
LABOR



REDUCES  
WASTE



**MULTISCAN TECHNOLOGIES develops and manufactures** equipment with vision technology and X-rays for the sorting and inspection of fruits, vegetables, nuts and other food products. Multiscan is a visionary company, passionate about the development and application of equipment and systems solutions based on vision technologies for the agribusiness, with a focus on a unique 360° product analysis and high-resolution X-Ray equipment. With more than 25 years of experience, Multiscan delivers differential solutions for the sorting and inspection of agri-food products driven by a value proposition based on four key concepts: Customer, Innovation, Global Reach and Sustainability.

#### FRUIT RECEIVING – BELT SORTERS

Advanced sorting by color and other characteristics, detecting quality problems and foreign material. Achieves high capacity with high efficiency sorting.



#### SORTING SYSTEMS – 360° SORTERS

Very compact and advanced vision systems for quality, color, shape and size sorting in 3 categories. SpinSort technology, developed by Multiscan, maximizes the inspected surface of the fruit rotating it completely for a comprehensive 360° analysis. Equipment for sorting **tomatoes, cherry tomatoes, cherries, citrus fruits, avocados, olives, and nuts.**



# FOOD SORTING & HANDLING



## GRADING LINES – TURNKEY PROJECTS

Complete grading and packaging lines for cherries and cherry/grape tomatoes. Turnkey projects from fruit receiving to packaging in different formats.



## X-RAY INSPECTION

Food product inspection using advanced X-ray technologies in combination with other vision systems, to ensure food safety in packaged and bulk products.



**WECO is a leading manufacturer of optical color and defect sorting equipment,** as well as moisture monitoring systems for crop products including blueberries, tomatoes, walnuts, pecans, wine grapes, coffee cherries, olives, hops, and more. Weco's portfolio of intelligent systems has maximized customers' throughput and eliminated needs for manual hand labor.

**OPTICAL SORTING**

**TOMATOES**



WECO's optical sorting systems are driven by Chromax LED Illuminator technology, which is state-of-the-art and garners the highest output, reliability and efficiency possible. The LED sorting optics minimize spectral reflections from shiny or wet objects and are intuitive to set up and fine-tune in operation. The modular design means it can be replaced in minutes.

**CRANBERRIES**



**BLUEBERRIES**



**RASPBERRIES**



**PECANS**



**COFFEE CHERRIES**



**WALNUTS**



**WINE GRAPES**



**OLIVES (OLIVE OIL)**



# FOOD SORTING & HANDLING



## INDUSTRIES



AGRICULTURE



FRUIT & VEGGIE



FOOD



BULK FOOD

## BENEFITS



REDUCES WASTE



HIGH PERFORMANCE



REDUCES LABOR



FULLY INTEGRATES



QUALITY CONTROL



ENERGY SAVINGS

## MOISTURE MONITORING

WECO moisture monitoring systems provide real-time moisture reading during the drying process. The technology uses a combination of proprietary software and custom-printed circuit boards to measure the electrical properties of the crop. These properties are utilized in conjunction with a product specific calibration to determine moisture across the sensor plate.

### WALNUTS



### PECANS



### HOPS





Recognized as a highly innovative company, and strongly committed to developing machinery to make sustainable packaging solutions, Mespack has the **largest product portfolio of the industry offering water soluble pods machinery, horizontal and vertical form, fill and seal, stick packs, stand-up pouches or other film-based packaging machinery, and end-of-line equipment.** Mespack's creative packaging solutions ensure the highest quality presentation, maintain product integrity, extend shelf life and create marketing value.

## HORIZONTAL FORM, FILL & SEAL SYSTEMS (H-SERIES)

Mespack offers a family of form-fill-seal machine models, that are modular in design and handle a range of low, medium, and large fill volumes and speeds.



## HORIZONTAL PRE-MADE MACHINE

Mespack offers premade pouch packaging machines utilizing technologies such as walking beam system, intermittent motion carousel and fill-through spout.



## ULTRA HIGH-SPEED

The UHS ServOriginal is the fastest continuous motion HFFS system on the market, ideal for food applications such as sugars and powders. Machine speeds up to 6000 linear inches of film per minute.





## VERTICAL FORM, FILL & SEAL

Mespack's VFFS offering includes multi-lane stick pack machines and 4-side seal multi-lane machines that package liquid, pieces, or solid products and are suited for high-speed production environments.



## HYDROFORMA SOLUBLE POD MACHINES

Water-soluble pods are the fastest growing packaging format in the home care sector. This innovative format was pioneered by Mespack and the revolutionary Hydroforma line speeds up to 2,400 pods per minute and produces 70% less waste than other horizontal style machines.



## END-OF-LINE CASE PACKING & PALLETIZING SOLUTIONS

Mespack offers complete solutions for case packaging: wrap-around and American box, as well as palletizing, for flexible packaging.



### INDUSTRIES



FOOD



BEVERAGE



DAIRY



FRUIT &  
VEGGIE



HEALTH &  
BEAUTY



PET FOOD



SNACKS



HOME CARE



HIGH  
PERFORMANCE



CUSTOMIZABLE



REDUCES  
WASTE



QUICK  
CHANGEOVERS



CIRCULAR  
PRODUCTS



REDUCES  
GHG



**nVenia designs and manufactures primary, secondary, and end-of-line packaging equipment.** nVenia delivers next-level packaging equipment, integration, and innovation to producers of food beverage, consumer, and industrial goods. Arpac brand equipment includes shrink wrappers, tunnels and bundlers, tray and case formers and packers, and robotic and conventional palletizers. Fischbein equipment is the trusted brand for open-mouth bag sewing and sealing systems. Hamer brand equipment is utilized worldwide and leads the market in large format filling, bagging, and palletizing; operating in some of the harshest production environments. Ohlson brand equipment features rugged solutions for primary packaging, including automated weighing and filling of various flexible and rigid container formats.

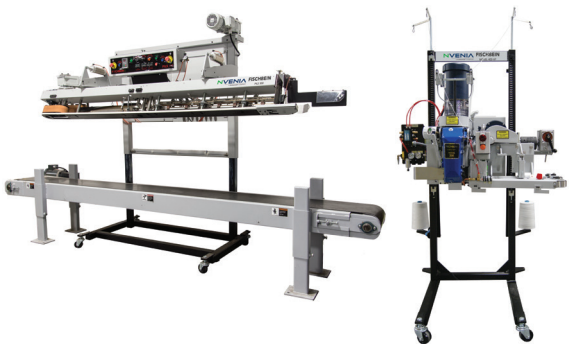
**ARPAC BRAND EQUIPMENT**

Arpac brand equipment has led the market in secondary packaging machinery for 45 years. Product line includes shrink wrappers, tunnels and bundlers, tray and case formers and packers, and robotic and conventional palletizers.



**FISCHBEIN BRAND EQUIPMENT**

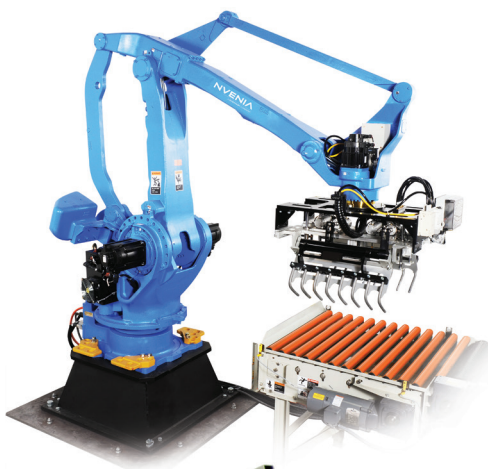
Fischbein brand equipment has been in operation for more than 100 years and is recognized as the leader in bag closing technologies. Product line includes open-mouth bag sealing and sewing solutions.





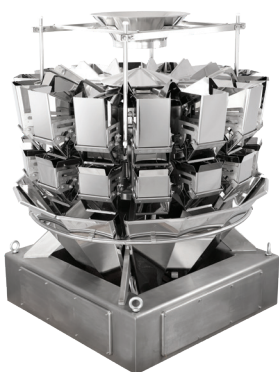
HAMER BRAND EQUIPMENT

Hamer brand equipment is the leading industrial bagging automation machinery provider for solutions in large format filling, bagging, and palletizing; operating in some of the harshest production environments.



OHLSON BRAND EQUIPMENT

Ohlson brand equipment is known for its rugged, highly accurate primary packaging lines to weigh, count and fill all types of packages, from flexible packaging to jars and all types of rigid containers.



INDUSTRIES

BENEFITS



AGRICULTURE



PET FOOD



DAIRY



REDUCES  
LABOR



SNACKS



FOOD



RETAIL



CUSTOMIZABLE



BAKERY &  
CONFECTION



BEVERAGE



PACKAGED ICE



REDUCES  
WASTE



AUTOMOTIVE



HOME CARE



HEALTH &  
BEAUTY



REDUCES  
FOOTPRINT



CHEMICAL/  
MINERAL



PRINTING



BUILDING  
MATERIALS



FULLY  
INTEGRATES



PHARMACEUTICAL



CPG



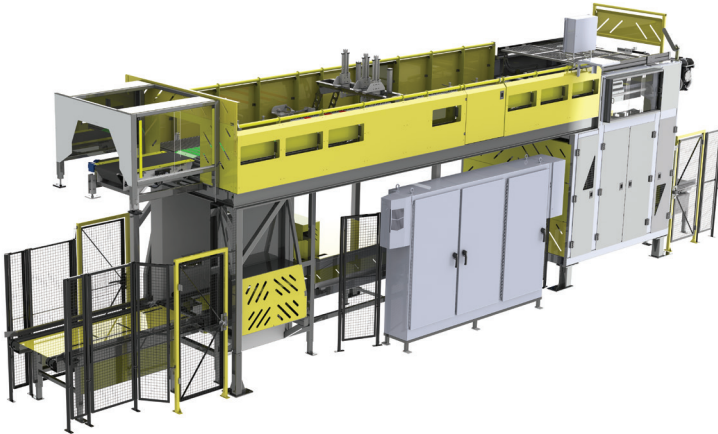
A DURAVANT COMPANY



With a mission to combine innovation, world class customer service, and leading edge technology, **T-TEK Enhances factory production while providing sustainable, user-friendly solutions to ensure long term efficiency.** Serving the world's top producers of food, beverage and consumer products. T-TEK designs, builds, and services innovative end-of-line equipment.

#### SERVO HIGH SPEED PALLETIZER

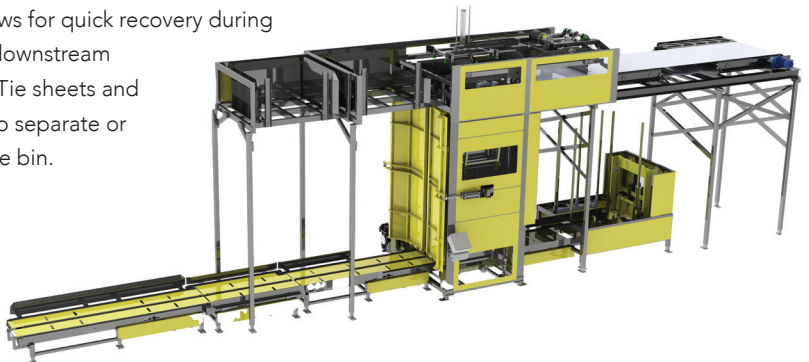
The heart of the high speed palletizers are the Servo controls on the hoist, apron, and compression area. They provide smooth concise positioning with a soft-touch built in. We have the fastest pallet changeout, with the smallest footprint in the high speed market. Our intricate HMI and one button changeover set us apart in the industry. Three different model sizes handle speeds from 50 packages per minute to 200.



#### SERVO HIGH SPEED DEPALLETIZER

This system supports 2,600 cans per minute fillers. It features a servo-driven hoist for high-speed pallet changeouts and precise layer positioning. The servo-driven sweep assembly ensures high-speed layer handling, accurate head-to-mat speed matching, and a soft product release.

An optional split bed allows for quick recovery during pallet changeouts when downstream accumulation is minimal. Tie sheets and frames are distributed into separate or a single common dunnage bin.





INDUSTRIES



BEVERAGE



FOOD



SNACKS



WINE & SPIRITS

BENEFITS



CUSTOMIZABLE



ENERGY SAVINGS



FULLY INTEGRATES



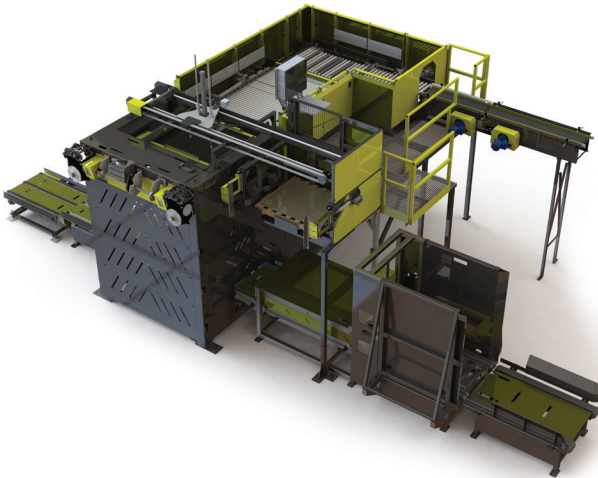
QUICK CHANGEOVERS



REDUCES LABOR

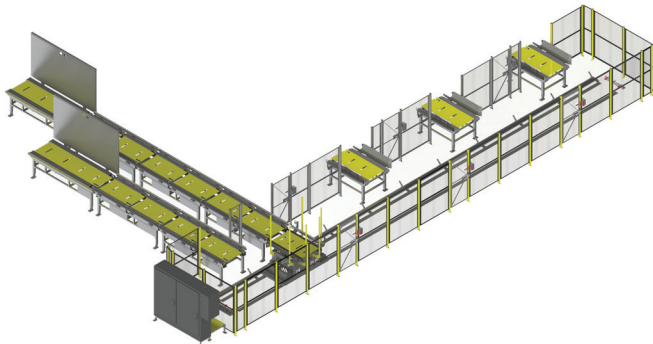
MID-RANGE CASE PALLETIZER

The medium-speed TMS is designed to meet the needs of the market requiring less than 40 cases per minute. It features a ruggedly built frame, equipped with the same robust hoist lift drivetrain as the high-speed models. Standard soft-touch case turning and multi-pattern configuration capabilities make this a smart solution for demanding sectors. The system is highly configurable and flexible, allowing it to fit into tight spaces. Additionally, it offers the same intricate HMI and one-button changeover functionality as the high-speed model.



PALLET HANDLING SOLUTIONS

Pallet handling solutions are designed for dispensing, stacking, distributing, and transporting pallets. Chain-driven live roller conveyors and 3-strand double 60 conveyors are used as standard components. Right-angle transfers, turntables, pallet-lowering conveyors, and pallet rotators can seamlessly integrate into the pallet system. The pallet transfer car system is employed to deliver or retrieve empty pallets, full pallets, or stacks of pallets to a bank of palletizers or depalletizers. Additionally, all T-TEK systems are pre-wired, programmed, and tested in-house prior to shipment.





**VOTECH is a full line bagging automation solutions provider** that brings together 100+ years of packaging experience with the industry's premier product brands of Fischbein, Saxon and Votech to deliver greater efficiency, productivity and profitability to customers worldwide. Votech delivers greater value to customers by engineering semi-automatic and fully-automatic bagging, bag sewing, and bag sealing solutions for granular and powder products across a wide array of industries and applications.

## FISCHBEIN SEWING TECHNOLOGIES

For more than a century, packaging companies of every size and from every industry, have trusted the Fischbein brand to provide the most efficient, most dependable machinery for closing all types of filled bags. We manufacture a full range of innovative bag sewing equipment, from our line of hand-held portables to our high-speed bag sewing systems.



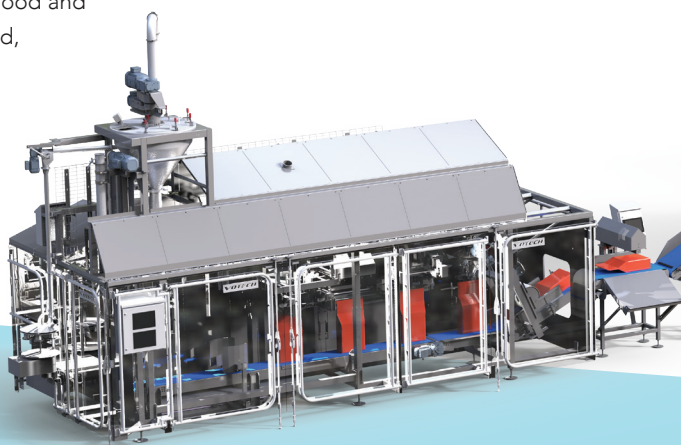
## SAXON SEALING TECHNOLOGIES

A pioneer in bag sealing technology, Votech offers a full-range of bag sealing solutions that include hot melt adhesive closures for paper bags and our line of Saxon® brand sealers for plastic bags and pouches.



## BAGGING AUTOMATION AND INTEGRATED SOLUTIONS

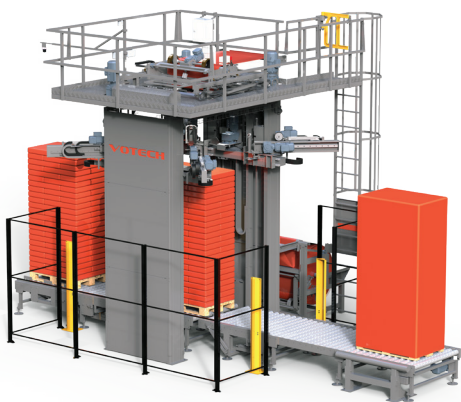
Votech offers tailor-made solutions for full line bagging automation . Our bag filling machines can manage granular and powder products and fill different types of bags from 5 to 50 kg. Developed to pack open mouth bags, tubular films or flat films, our bagging lines provide high-precision and hygienic solutions in the food and powder sectors such as milk powder, pet food, animal feeds, food flavors, flour milling, fertilizers, wood pellets, horticulture, and associated products.





STRETCH HOODING

Votech's stretch hood machines give extra protection to palletized bags by placing a hood over the stacked pallet. This ensures more secure while protecting against moisture and dust.



INDUSTRIES

BENEFITS



AGRICULTURE



BULK FOOD



HIGH  
PERFORMANCE



LAWN &  
GARDEN



MINERALS/  
CHEMICALS



REDUCES  
LABOR



BUILDING  
MATERIALS



DAIRY



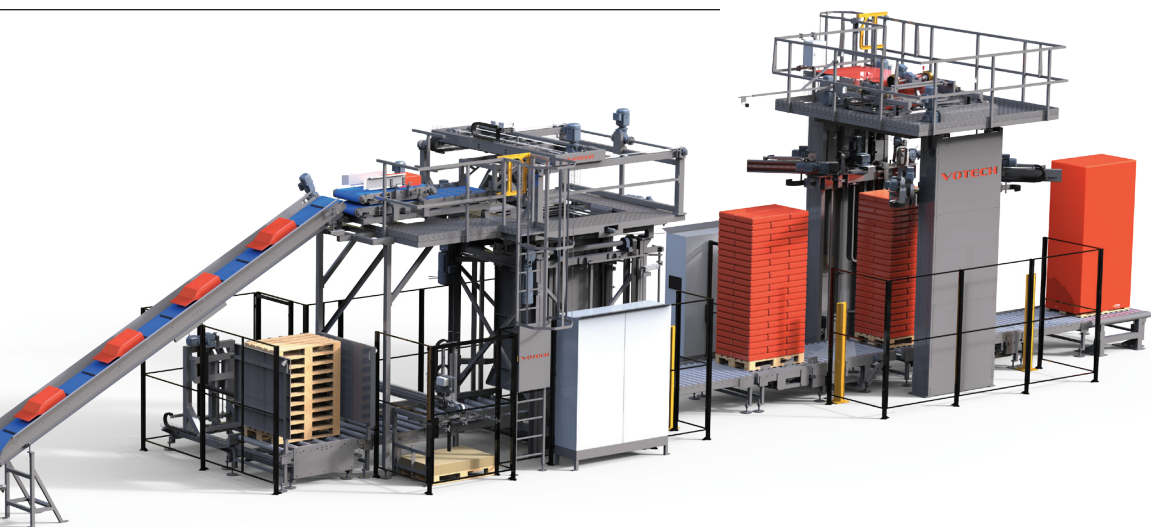
FULLY  
INTEGRATES



FRUIT & VEGGIES

PALLETIZING

Experts in end-of-line integrated solutions, Votech offers a complete selection of palletizing machines designed to create the ideal layers, patterns and the most secure pallets.





**Renowned for engineering, manufacturing, and distributing** the industry's best-built end-of-line packaging equipment. Wulftec International is synonymous with customization, unbeatable strength and durability for stretch wrapping, strapping equipment and pallet handling solutions with an unwavering focus on quality, service and innovation.

#### FULLY-AUTOMATIC STRETCH WRAPPERS

Wulftec is the world leader in automatic stretch wrappers and offers a full line of fully automatic conveyorized stretch wrapping systems in both rotary arm and turntable models with production rates of up to 100 loads an hour. All are fully customizable.



#### SEMI-AUTOMATIC STRETCH WRAPPERS

Wulftec offers a complete line of semi-automatic turntable stretch wrappers in low & high profile designs and a complete series of semi-automatic rotary arm models with production rates of up to 50 loads an hour.



#### FULLY AUTOMATIC STRAPPING EQUIPMENT

Product line includes highly customizable automatic strapping systems with over 13,400 pounds of compression, systems without compression, automatic side seal and horizontal strapping. All systems feature the highly reliable GT-41 N strapping head.





PALLET HANDLING SOLUTIONS

A full line of pallet handling solutions including pallet dispensers, pallet inverters, pallet stackers, transfer carts and a complete line of heavy duty conveyors with weight capacity of up to 6,000 pounds.



INDUSTRIES

BENEFITS



FOOD



BEVERAGE



HIGH  
PERFORMANCE



BUILDING  
MATERIALS



CPG



CUSTOMIZABLE



MATERIAL  
HANDLING



RETAIL



REDUCES  
WASTE



AUTOMOTIVE



ECOMMERCE



FULLY INTEGRATES



LAWN &  
GARDEN



MINERALS/  
CHEMICALS



REDUCES  
LABOR



ENERGY  
SAVINGS

FULLY INTEGRATED STRAPPER, WRAPPER & PALLET HANDLING SOLUTIONS

Wulftec is the only manufacturer to offer fully integrated strapper-wrapper-pallet handling combos to meet various applications. Manufactured for seamless process integration with both automatic and semi-automatic applications.

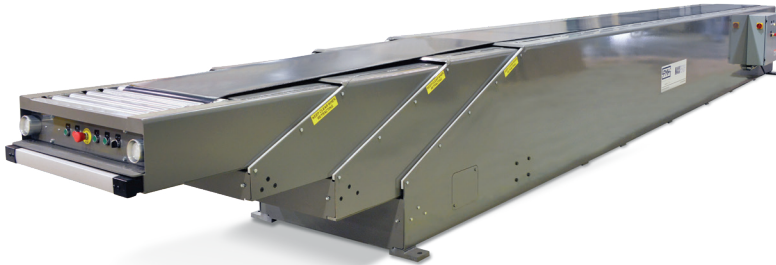




**Recognized as the leader** in fluid truck loading and unloading material handling solutions, FMH Conveyors manufactures, installs, and services a complete range of custom engineered and designed conveyors for applications in distribution, ecommerce, manufacturing, assembly, and packaging operations. Customers have depended on FMH's products to perform under punishing conditions.

#### TELESCOPIC CONVEYORS

FMH is the leader in telescopic conveyors, developing the best engineered systems available that provide the highest level of productivity for large volume shipping and receiving applications, as well as narrow footprint, long reach and touch-free extension.



#### RIGID DRIVE-OUT CONVEYORS

The heavy-duty construction of FMH's drive-out systems are ideal for heavy volume and high impact shipping jobs.



# MATERIAL HANDLING



## INDUSTRIES



DISTRIBUTION



ECOMMERCE



CUSTOMIZABLE



PARCEL POST



RETAIL



REDUCES  
LABOR



TIRE HANDLING



PACKAGING



REDUCES  
FOOTPRINT



FOOD



WINE & SPIRITS



HIGH  
PERFORMANCE

## RIGID RECONFIGURABLE

FMH's Rigid Reconfigurable units offer rapid assembly of conveyor solutions with building components of straights, corners, merges and sort tables. They are also easily combined with flexible powered conveyors.



## FLEXIBLE POWERED CONVEYORS

Powered rollers control packages at variable rates of speed, while the flexible design creates the ability to move to different locations and positions. The units contract for easy storage.



## TELESCOPIC GRAVITY CONVEYORS

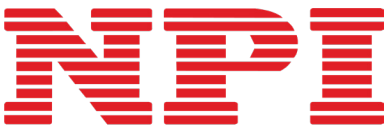
FMH's multi-stage, rigid and gravity roller conveyors significantly reduce load times and are typically used with sortation systems or feeding conveyors.



## FLEXIBLE GRAVITY CONVEYORS

As the leader in both roller and skate designs, we deliver optimal utility with ability to move to different locations and positions. Units contract for easy storage.





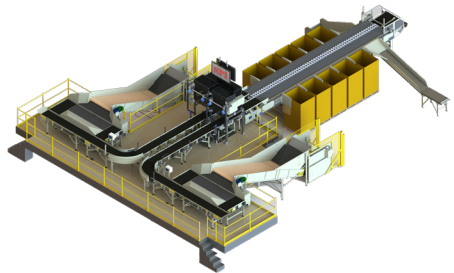
A DURAVANT COMPANY



**NPI** is a designer, manufacturer and service provider of sorters and other automated material handling solutions for high volume sortation and fulfillment of parcels, flats, letters, polybags, boxes and uniquely shaped packages. NPI's modular and configurable equipment solutions and advanced software is engineered to help the world's largest delivery and warehouse operators reduce labor, increase production, and enhance operational efficiency across their various sorting needs..

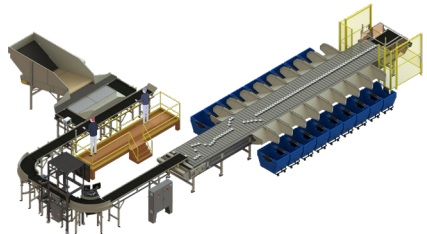
#### XSTREAM HIGH THROUGHPUT SHOE SORTER

NPI's Xstream High Throughput Sliding Shoe Sorter is a reliable, efficient, and scalable parcel sorting solution with minimal maintenance requirements. The shoe-type sorter design provides a platform capable of sorting up to 24,000 parcels per hour, empowering NPI's customers to deliver faster and with greater accuracy.



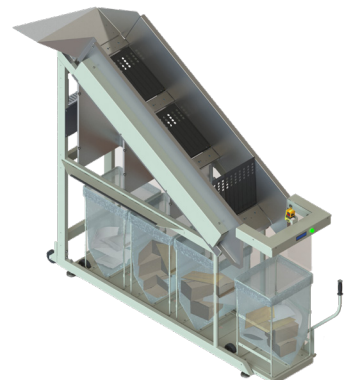
#### XSTREAM COMPACT HIGH DENSITY SHOE SORTER

NPI's Xstream Compact Parcel Sorter is a highly efficient and compact automated sorting solution that uses as little as 2,500 square feet of floor space. The Single Lane Bi-Directional configuration gives the Xstream the ability to sort parcels in two directions, allowing for more outputs and destinations with a small footprint. Capable of sorting a wide range of mail or package types from flats mail to poly bags and boxes, it's a compact solution with a throughput of 10,000 parcels per hour.



#### HIGH DENSITY SACK CHUTE

The HDS Chute, NPI's innovative high-density parcel sorting chute, is designed to efficiently sort poly bags, boxes, flats, and irregularly shaped packages. Engineered with your valuable floor space in mind, this chute features four different sack destinations within a single compact design. Operators can easily swap out sacks of parcels using a roll-out cart equipped with an ergonomically designed handle, enabling quick transportation to their next destination.

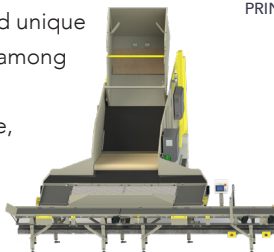


# MATERIAL HANDLING



## SEMI-AUTOMATED BULK SINGULATOR

The Semi-Automated Bulk Singulator represents a significant leap in parcel singulation and induction technology. Distinguished by its innovative and unique singulation process, it stands out among other parcel singulation solutions due to its affordability, ease-of-use, and compact design.



### INDUSTRIES



DISTRIBUTION



ECOMMERCE



CUSTOMIZABLE



PARCEL POST



RETAIL



REDUCES  
LABOR



PRINTING



PHARMA-  
CEUTICAL



REDUCES  
FOOTPRINT



HIGH  
PERFORMANCE

## VSORT LETTER AND FLATS SORTER

NPI's Vsort revolutionizes flats sorting technology with throughputs of 18,000 flats per hour and 24,000 letters per hour. An excellent sorting system for financial institutions and universities needing to send a large amount of letters or flats. Save time, increase efficiency, and sort flats up to 0.6" thick with the Vsort.



## MAXIM HIGH VOLUME LETTER SORTER

With its advanced reading and sorting technology, lightning-fast sorting speeds, and a wide range of pocket options, NPI's Maxim is capable of sorting up to 50,000 letters per hour. Featuring best-in-class pickoff accuracy, and the ability to reliably sort heavier weight marketing mail, the Maxim is ideal for high-volume mail sorting.



## OMEGA LETTER AND FLATS SORTER

Boasting an impressive throughput of up to 20,000 pieces per hour, the Omega is one of the most efficient compact letter sorters available today. Equipped with the industry's most advanced Multi-Line Optical Character Reader, it is capable of reading both handwriting and printed text. With the Omega, you only need one operator, and its integration with the popular Microsoft® Windows platform makes it user-friendly, minimizing user training.



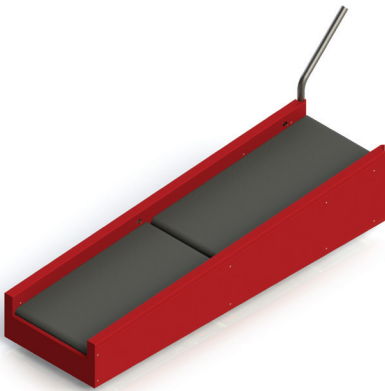


**Motion06 designs and manufactures** high-performance intelligent conveyors, excelling in belted curves. Engineered to support unit load material handling applications in ecommerce, parcel distribution and airport baggage handling, Motion06's customized solutions emphasize better efficiency, high performance and user-friendly designs. Motion06 is the worldwide leader in complete belt solutions for airports.

## SOLUTIONS FOR AIRPORTS

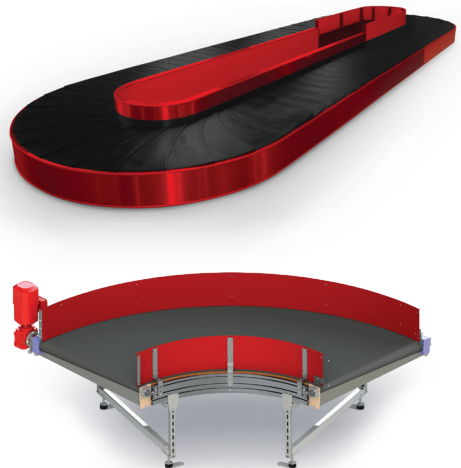
### CHECK-IN

Available in fixed-mount or extendable versions, these systems are designed for passenger accessibility and fast maintenance access.



### CAROUELS

Developed specifically for use in airports, the convex and concave curves easily adapt to the available space. The quietest in its class.



### VERTICAL SORTING UNIT

Fast-acting vertical diverter used wherever packages need to be separated and discharged from the main flow. Handles a capacity of up to 2,500 packages per hour.



# MATERIAL HANDLING



## INDUSTRIES



PARCEL POST



RETAIL



ECOMMERCE



AIRPORT BHS



INTRALOGISTICS



CUSTOMIZABLE



FULLY INTEGRATES



HIGH PERFORMANCE

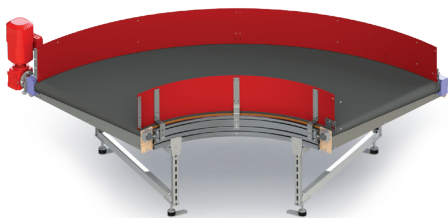


ENERGY SAVING

## SOLUTIONS FOR PARCEL AND ECOMMERCE

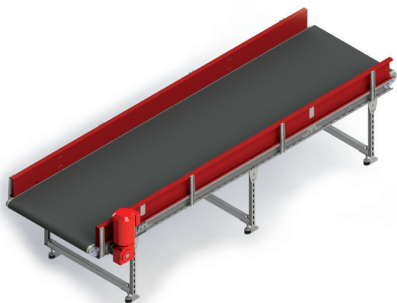
### CURVE BELT CONVEYORS

Ideal for the continual transportation of boxes, containers and packaged goods that involve a change in direction.



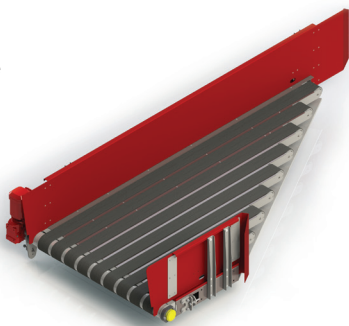
### STRAIGHT BELT CONVEYOR

Whether straight, ascending or descending, the straight belt conveyor transports packages and general cargo on all conveyor routes. This modular system satisfies a huge range of requirements.



### BELT MERGE / DIVERT

Available in strip or full belt merge, these modular units are designed for repeatable merge functions.





**QC Conveyors designs and manufactures** high quality, low-profile conveyance products, serving many of the world's most recognized brands. Supported by best-in-class engineering and an online configuration and quoting system, QC Conveyors offers reliable, high quality products.

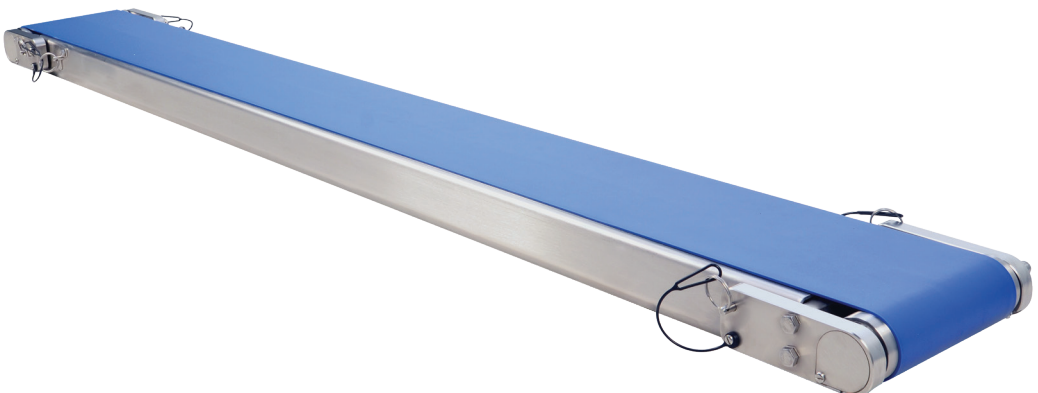
#### AUTOMATION SERIES

These user-friendly conveyor systems are built on a rigid aluminum frame targeting the automation, robotics and vision industries. Features include tension release flip-up tails and pivot rotatable drives. Conveyors are available with a variety of flat or cleated belts in end drive, center drive and angled frame configurations.



#### HYDROCLEAN SERIES

Sanitary conveyors are designed for food and pharmaceutical packaging applications and are built on a stainless steel frame, which can be quickly disassembled without tools for easy cleaning. Options include a variety of belts, including fully encapsulated and plastic chain models.

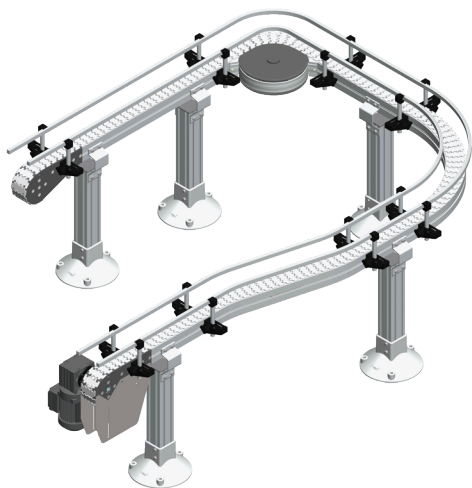


# MATERIAL HANDLING



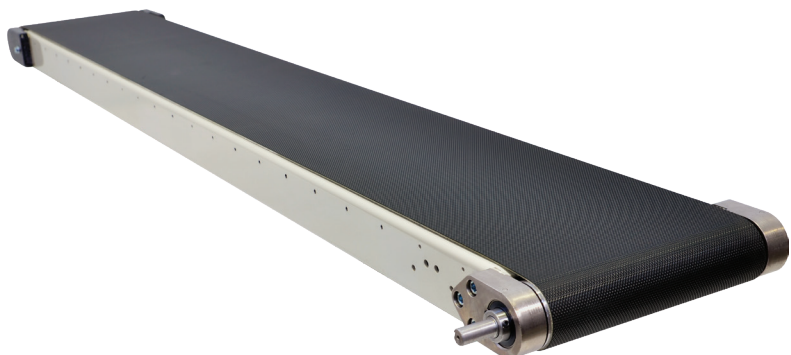
## FLEXTRAC SERIES

These conveyors feature a modular design that's capable of infinite configurations to fit nearly any factory application. They're capable of saving space by working around existing equipment or taking advantage of unused vertical real estate with alpine accumulations units and gripper elevators.



## INDUSTRIAL SERIES

QC Conveyors' Industrial Series products are built on a strong steel frame designed for the most rugged and demanding environments. Industrial Series conveyors are available in flat, plastic chain or cleated belt configurations, with options for indexing conveyors and conveyors with internal drive motors. Target industries include automotive, metal stamping and more.



### INDUSTRIES



AUTOMOTIVE



BREWING



FOOD



MATERIAL  
HANDLING



METAL  
WORKING



PACKAGING



PHARMACEUTICAL



PLASTICS



WINE &  
SPIRITS



PRINTING



PET FOOD



HEALTH &  
BEAUTY

### BENEFITS



FULLY  
INTEGRATES



HIGH  
PERFORMANCE



CUSTOMIZABLE



REDUCES  
LABOR



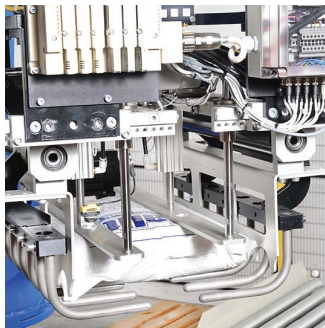
DURAVANT



# Bringing Lifetime Value through Comprehensive Service Solutions

---

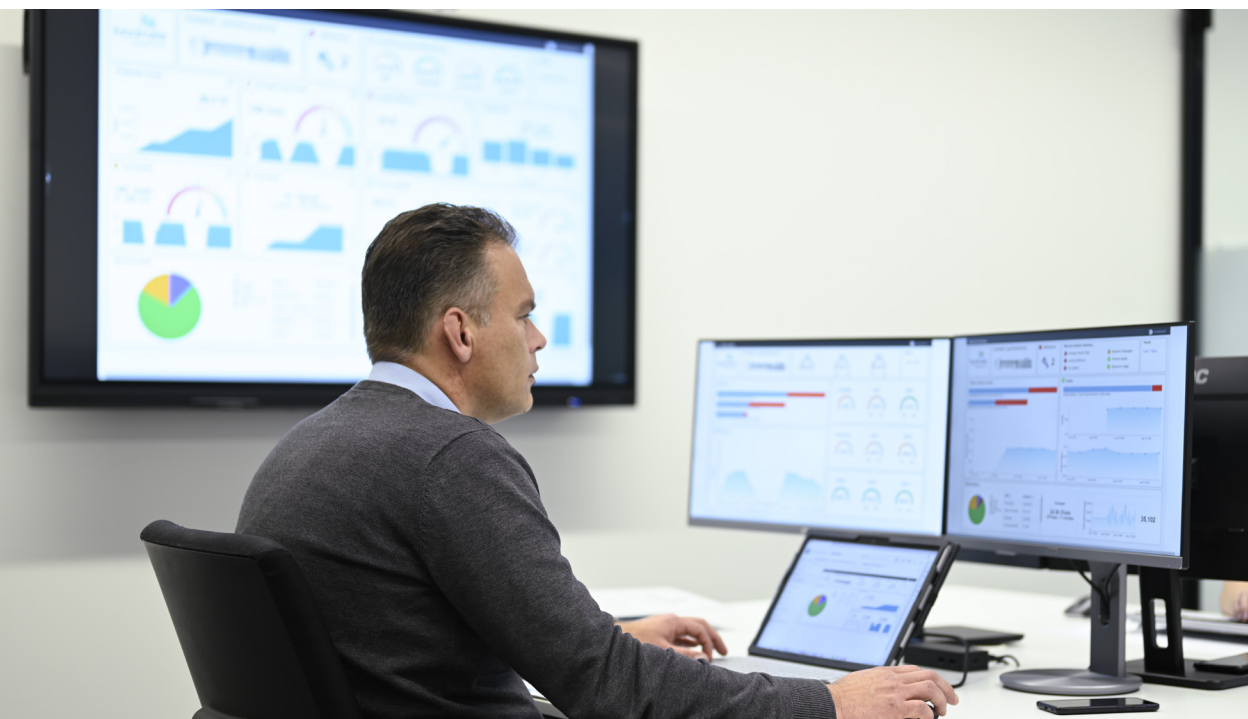
**Duravant Lifecycle Services** is the power behind our aftermarket solutions for Duravant's portfolio of food processing, packaging and material handling equipment. We bring a consultative approach to help you optimize the performance of your equipment throughout its entire service life. Our goal is to deliver service solutions that reduce operational disruptions and costs, optimize safety and quality, and improve the overall equipment effectiveness within your operation.



- Technical Support
- Installation & Setup
- Emergency Repair
- Preventive Maintenance
- Training
- Audits
- Remote Monitoring
- Equipment Modernization
- Service Programs



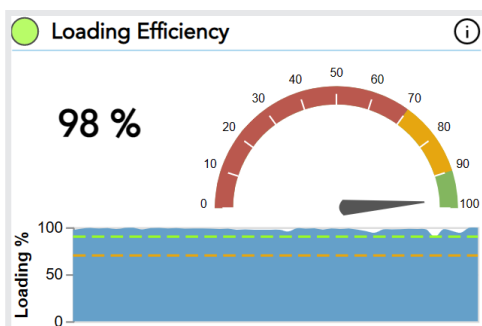
**ONSIGHT™ provides the operator** with a comprehensive portfolio of IIoT services that enable real-time situational awareness of all aspects of machine operations. Hundreds of key metrics can be monitored, alarmed, and reported to maintain the health, efficiency, and maintenance of machines.



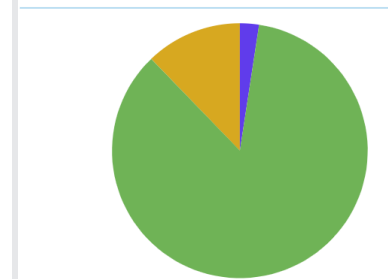
**Delivering operational intelligence that goes beyond what off-the-shelf IIoT solutions can provide.**

#### Machine Efficiency

Increase yield by managing the key indicators



#### Machine State



Our IIoT services powered by Duravant ONSIGHT™, the next generation of Digital Operations

Duravant ONSIGHT™ is an end-to-end solution that creates a secure link from elements onboard our machines to a secure cloud that enables customizable services. Modern industrial IIoT solutions allow operators to monitor the machine’s performance and take action in real-time. Our IIoT services powered by Duravant ONSIGHT™ provide processors with a wide range of benefits:

- ✓

**Machine Monitoring** – track all key indicators on the health and productivity of your equipment line.
- ✓

**Maintenance Insights** – a one-stop shop for performing preventative maintenance, opening tickets, remote support, and tracking status.
- ✓

**Measure Quality** – track the quality of your production
- ✓

**Real-time Alerts** – operator defined alerting on any signal that indicates a change in productivity or health of the machine.
- ✓

**Reporting** – generate reports on
- key metrics that track fleet performance over time.

✓

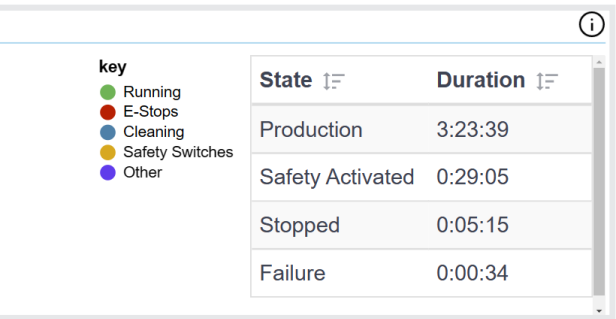
**Increase Safety** – indicators that ensure that the machine is being operated correctly.

✓

**Customization** – data services that are custom fit to the operators' specific needs.

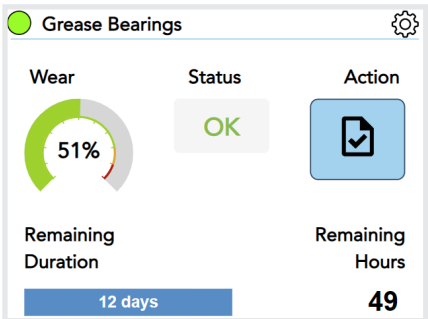
Machine Health

Increase operational readiness with real time insights



Machine Maintenance

Reduce service costs through integrates tools and processes





DURAVANT  
INNOVATION THAT WORKS.

844-DURAVANT MAIN TELEPHONE  
630-635-3910 MAIN TELEPHONE (OUTSIDE US)  
630-635-3911 FAX

3500 Lacey Road, Suite 290  
Downers Grove, Illinois 60515

[www.duravant.com](http://www.duravant.com)