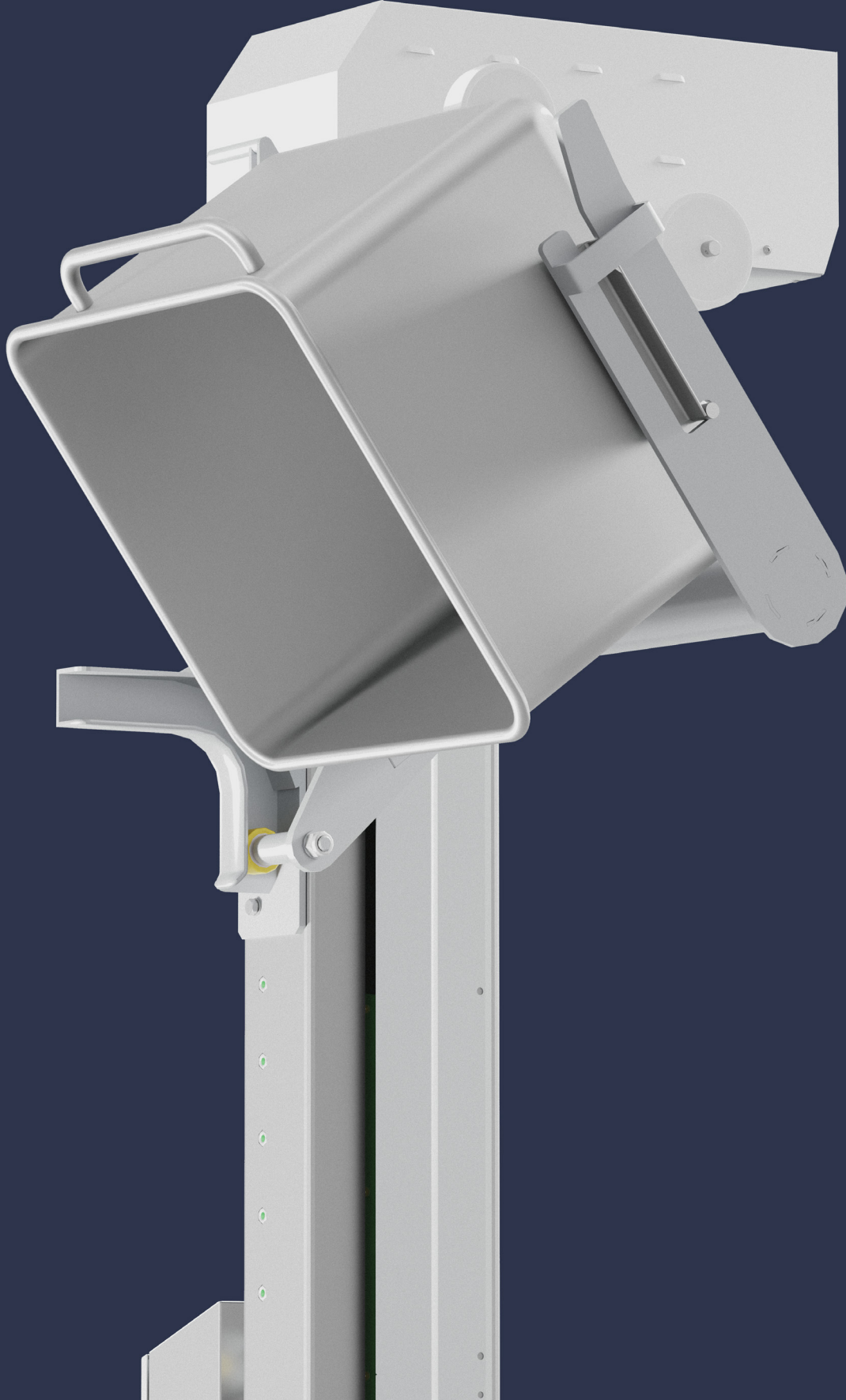


Brökelmann

SINGLE COLUMN TIPPER



Brökelmann

SINGLE COLUMN TIPPER

Designed for standard DIN9797 compliant 200L and 300L tanks
Significantly reduces the risk of injury and accidents caused by manual handling of the load

Our static single column lifter is specifically designed to lift and tip Eurobins. Whether you want to enhance best practice standards or improve hygiene levels by implementing Eurobins alongside standard ones or replacing your existing Eurobins, this single column lifter is an excellent choice. It is engineered to lift and tip standard Eurobins.

Key Features:

Designed for compatible Eurobins or standard DIN9797 200L & 300L Eurobins.

UP to 55 degrees tipping angle

Significantly reduces the risk of injuries and accidents associated with manual handling operations.

Column heights and tipping profiles are customizable to suit individual handling requirements.

Safe Working Load (SWL) of up to 380kg.

Height adjustment for tipping the 200-liter tank is possible from 1900 mm to 2400 mm in 100 mm increments.

Height adjustment for tipping the 300-liter tank is possible from 1755 mm to 2255 mm in 100 mm increments.

Constructed with Grade 304 stainless steel for durability and hygiene.

Electrical requirements: 400V 3-phase power supply.

Left or right-hand lift columns for flexibility.

Mobile carriage frame are available.

Safety Features:

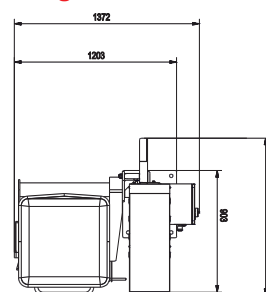
High and low-level lift carriage limit switches.

Lift column chain guard.

Mechanical chain-break safety column that prevents the Eurobin from falling in case of chain failure.

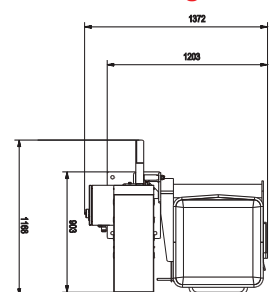
Optional mobile base:

Model left, straight fork



buggy loading direction

Model right, straight fork



buggy loading direction



EMAIL:
export@brokelmann.pl

PHONE:
+48 71 38 42 584

ADDRESS:
Stawna 6, 56-300 Milicz, Polska



WWW.brokelmann.eu