



*That's well laid!*



**“In 30 years of designing and engineering food factories we have found Ruys to be one of the few companies able to take a helicopter view of complex flooring issues. The most important thing about a floor is not the day of delivery; it’s how does the floor look after five, ten and fifteen years of use. That’s where Ruys scores well.” – Herman Bessels, architect at BNA**



## **Ruys Vloeren: the right floor in the right place**

**Advice**

**Total package**

**New builds**

**Renovation**

*That's well laid!*



## Custom solutions

When you're looking for the perfect industrial floor, Ruys Vloeren in Apeldoorn is the place to be. Here, you'll find a wide range of durable floors that support the efficient running of any business operation. The range includes high-quality screed floors and related products for the food industry, heavy industry and the logistics industry, among others. As the company offers various floor systems, each of which has its own unique qualities, Ruys Vloeren gives you the right floor in the right place. Working with such a broad product range, Ruys Vloeren is able to provide a total solution that is tailor-made. Every day, the company's 40 specialists provide custom advice and install floors, applying their expertise and experience. Which is what you want, because this job has to be done right first time!

### Forty years' experience

Given this level of professionalism, it only makes sense that customers have been relying on the services of Ruys Vloeren for more than 40 years. The company's strength lies in its staff of experienced specialists and the breadth of its product range. To date, Ruys Vloeren's staff have installed quality floors in more than 20 countries for numerous industries, for both new builds and renovation projects. As this suggests, enduring customer satisfaction is very important to Ruys Vloeren. When starting a project, the company is always keen to help customers with ideas to achieve the optimum total solution in floor finishing.

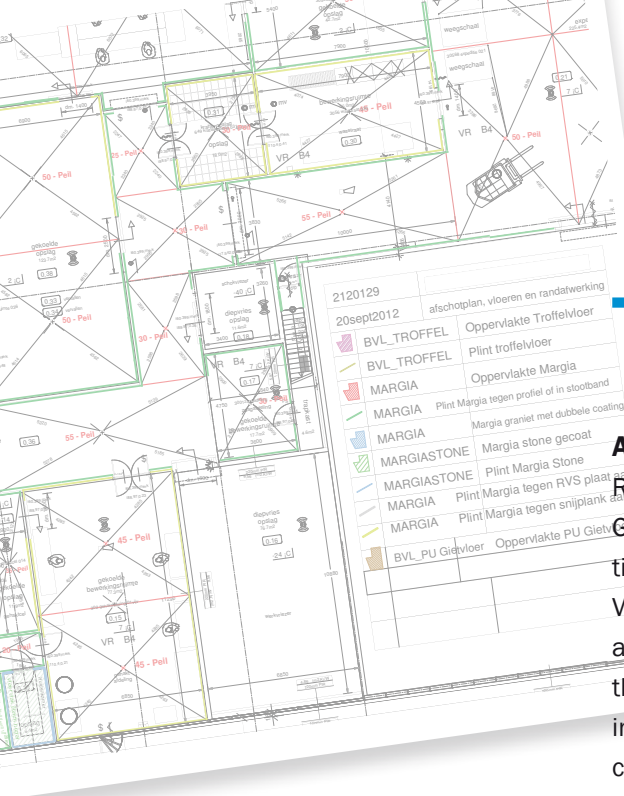


**“Ruys Vloeren kept perfectly to the schedule. The floor was made with craftsmanship and delivered bang on time. And the people at Ruys Vloeren were really pleasant to work with.” – Kees Hendriks, Van de Scheur (Vianen)**



**“We already have many metres of flooring installed by Ruys. The fact that Ruys can deliver the entire project, including the slope, the various top layers and the bump curbs, is a real plus for our coordination and planning.” – Frank Hagmolen, HTD Huuskes (Enschede)**





# Total picture from A to Z

## Advisory role

Ruys Vloeren has years of experience of both renovation work and new builds. Giving good advice is a job Ruys Vloeren takes seriously. By thinking collaboratively with the customer from the outset and suggesting practical solutions, Ruys Vloeren ensures that customers are spared any surprises. The company's experts are able to provide correct and complete advice because they first familiarise themselves with the customer's production process. This involves establishing how each space will be used. Drawings, site visits and discussions with the customer and architect are used to decide which floor best suits each space. We consider all the details. Where should drains and gutters be placed in wet production rooms, for example? And at what height, to guarantee that puddles don't form? Where are wall-protecting measures needed? These and other factors are used to prepare a plan of action, which is then discussed with the cost accounting and implementation department, and subsequently presented to the customer in a visualisation.

[www.ruysvloeren.nl](http://www.ruysvloeren.nl)

### TRAFFIC ACROSS THE FLOOR

people walking  
hand pallet trucks  
electric pallet trucks  
fork-lift trucks  
other  
frequency

### WORK ENVIRONMENT CONDITIONS

always dry  
always wet  
something in between

### TEMPERATURES

work temperatures  
temperatures of products  
and/or liquids that may  
come into contact with  
the floor

### CLEANING ROUTINE

daily  
what method  
lathering  
brushing  
high pressure  
machine  
manual  
frequency



*Ruys creates order out of chaos*

### DETERMINING FACTORS

available time  
layer thickness  
construction  
accessibility  
halting production  
flatness  
anti-slip  
aesthetics  
dirt


### SUBSTANCES ON THE FLOOR

liquids  
products  
chemicals

### SPECIAL REQUIREMENTS

inspection services  
BRC standards  
liquid density





**“In my experience, Ruys Vloeren is an experienced and trustworthy company, where you can go for straightforward and honest advice about various floors for your various spaces. Clearly, Ruys Vloeren wants to deliver not the most expensive but the best and most suitable floor, and that really appealed to me.” – Anton Looman of Looman Salades in Oss.**

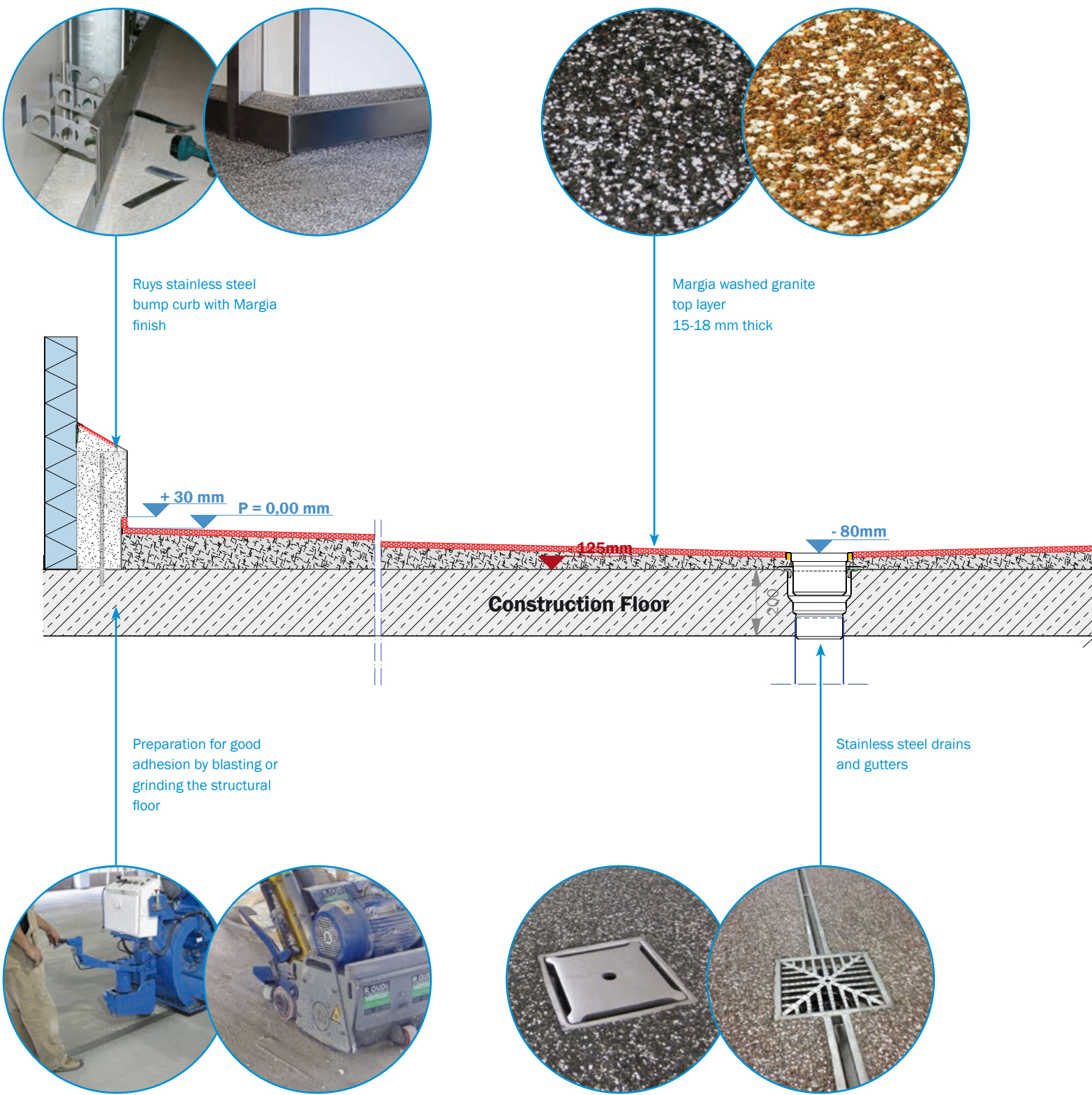
## **The work floor: there's just one chance to get it right**

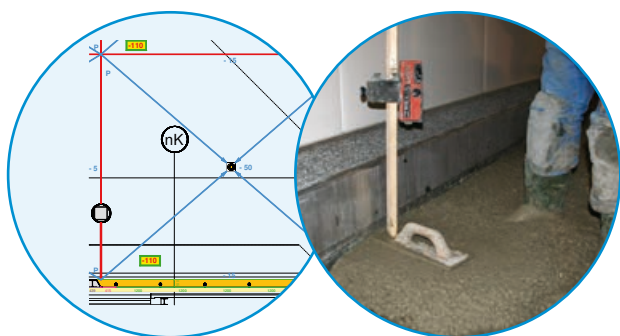
### **Total solutions**

As well as the advisory role described above, customers of Ruys Vloeren are impressed by the total solutions the company offers. Besides installing high-quality floors, Ruys Vloeren carries out any necessary demolition and grinding work, and its product range includes stainless steel drains, gutters, wall protection and bump curbs. The team at Ruys Vloeren tackle each project with the care they would devote to their own premises. They prefer to think in terms of solutions, not problems. Before any installation, Ruys Vloeren invests a great deal of time in surveying the situation, advising, preparing, working up ideas together with the customer and planning.

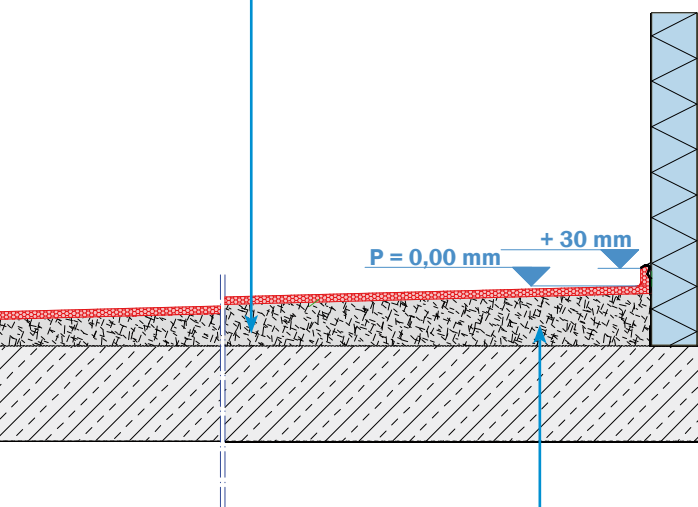


# The total solution





Establishing floor and  
slope height



Ruys steel-fibre reinforced  
concrete sloped floor,  
30-110 mm thick



**FSI**  
FIBRE SYSTEMS INTERNATIONAL

**FIBRES 4  
CONCRETE**

info@fsi.be  
www.fsi.be

**Straalbedrijf  
LINKO**

T 0548-361316  
F 0548-365222  
M 06-53642104  
info@straalbedrijflinko.nl  
www.straalbedrijflinko.nl

Holten (NL)  
Stofvrij Stralen van Vloeren

## Verzekerd van de beste kwaliteit



**WUTHRICH**  
makelaars in assurantiën / assuradeuren

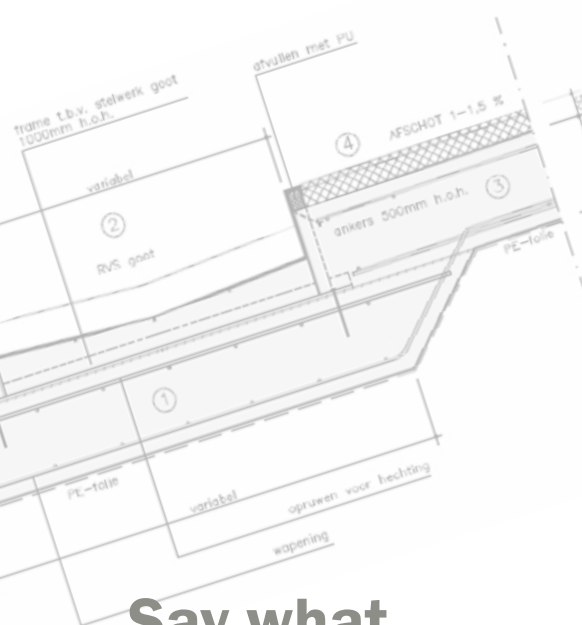
OMDAT **U** CENTRAAL STAAT

Ruys Vloeren en Wuthrich staan voor  
een combinatie van ervaring, deskundigheid,  
inlevingsvermogen, creativiteit, zorgvuldigheid,  
flexibiliteit en het altijd aanbieden van een  
totaaloplossing.

**WUTHRICH feliciteert Ruys Vloeren  
met haar 40 jarig jubileum.**

Oudwijkerlaan 47, UTRECHT Postbus 14092, 3508 SC UTRECHT  
Telefoon 030 - 254 91 91  
E-mail info@wuthrich.nl Website www.wuthrich.nl





# Ideal preparation for a new build

Ruys Vloeren delivers a floor that needs no looking after for decades to come. To achieve this feat, the Ruys Vloeren project team first examines the new build plans and the architectural drawings and considers how the space will be used over time. This approach prevents any surprises arising during construction and means everything is discussed in advance.

## Experienced project team

Project leaders have at least 20 years' experience, bosses on the work floor at least 15 years and the floor fitters an average of 13 years' experience. In short, you can rely on an experienced project team to produce an excellent result. Even with certified materials, the latest technologies and modern, well-inspected machinery, the most important factor in achieving a good floor continues to be the professionals who install it.

**Say what you do and do what you say.**



**Craftsmanship, experience and proven quality.**





“I am very happy that I chose the MARGIA granite floor and stainless steel supplied by Ruys Vloeren. It's a one-time expenditure that I haven't regretted for a moment.” – Willem Wals, Topkip Amsterdam



**specialist in**  
oppervlaktebewerking



• stofvrij stralen



• frezen

**Uw partner**  
voor de perfecte basis



• diamant schuren



• diamant schaven

**Straal Groep Wezep B.V.**  
Broekoordseweg 3  
8095 RM Oldebroek  
The Netherlands  
T +31 (0)525 63110  
F +31 (0)525 63115  
E info@servicegroep.nl  
**www.servicegroep.com**





Adhesion measurement



Drilling cores



Before



**During a renovation we have to plan beforehand, not afterwards**

## Total and professional renovation

**“It’s a great company with professionals who take their work seriously. And people who provide useful input so that everything runs smoothly.” – Herman Grobbink, Diversey (Enschede)**

Any company that wants to renovate its floor has much to gain from the expertise and total solutions offered by Ruys Vloeren. To ensure everything goes as smoothly as possible, the specialists get the ball rolling by making a comprehensive survey. This enables Ruys Vloeren to provide clarity at the outset and rules out the risk of later disappointment. But the company’s inspection goes further than a good inventory of the present situation and anticipated future use. In a preliminary investigation the structure of the floor is inspected, adhesion tests are carried out to ascertain the adhesion options and heights are



**UW PARTNER IN TRANSPORT EN VERHUUR OPLOSSINGEN!**  
 VLIJTSEKADE 101 7317 AP APELDOORN T. 055 5213161  
 E. INFO@KISJES.NET WWW.KISJES.NET



**Ervaring en vakmanschap? Een gevarieerd wagenpark voor elke transportvraag? Een breed containeraanbod voor elke opslagvraag? Kranen voor snel en veilig laden en lossen?**

Voor al deze en andere vragen bent u bij Kijes Transport BV en Verhuur BV aan het juiste adres! Wat uw transport- en/ of opslagprobleem ook is, Kijes Transport BV en Verhuur BV bieden u een geschikte oplossing. In het hele land (en daarbuiten) en voor elk doel.

Wij streven naar een vlekkeloze uitvoering van uw opdracht, op tijd en volgens afspraak. Daarvoor staan onze ervaring, vakmanschap en klantgericht aanbod garant. Bovendien kunt u rekenen op persoonlijke aandacht en een goede service.

Heeft u een transport- en/of opslagprobleem? Neem dan contact met ons op, want wij helpen u graag!





measured to ensure planarity. In short, Ruys Vloeren takes its time before the actual renovation work is carried out.

### **Complete renovation, everything under one roof**

When all the preliminary investigations are done, our specialists carry out the complete renovation. This includes all the preparatory work, such as sawing, demolition, grinding and blasting, as well as any additional work, such as the installation of new drains, gutters, plinths and bump curbs.

During a renovation, Ruys Vloeren works through the following steps:

1. Survey of the space
2. Preliminary investigation
3. Plan of action
4. Preparatory work
5. Floor work
6. Finishing and delivery



**world-wide approved...**

**more than 300 million m<sup>2</sup> industrial floors**

KORODUR International GmbH, Germany • [www.korodur.com](http://www.korodur.com)



# Ruys Vloeren product range

## Helping customers with good ideas

### Ruys Vloeren and De Bedrijfsvloer: two divisions

Ruys Vloeren is *the* specialist in the field of cement-bound and synthetic-modified cement-bound screed floors. **Margia** and **Korodur** floors are world famous for their exceptional strength and, together with **Ucrete** and **Granitech** floors, offer unique characteristics that benefit users.

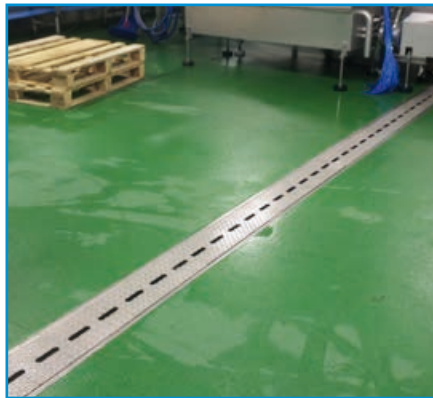
De Bedrijfsvloer is *the* specialist in the field of synthetic floors, in particular polyurethane and epoxy, as used in float coatings, poured and trowel floors.

Together, the two divisions form a complete construction partner ready to take full responsibility. This responsibility ranges from the requisite preparatory work (blasting, grinding, etc.), the supply of the sloped floor or filling layer, high-quality stainless steel drains and gutters to wall finishing in the form of plinths or stainless steel bump curbs. Besides having more than 40 years of international experience, Ruys holds quality certifications from Afbouwkeur and VCA. Participation in European standards committees and in NEN and NOA, as well as the company's many international activities and offices all ensure that Ruys Vloeren is the first to know about new developments.



#### THE MARGIA WASHED GRANITE FLOOR – EXCEEDINGLY STRONG WITH LASTING ANTI-SLIP

For the food-processing and meat-processing industries, Ruys Vloeren has installed floors that have been performing optimally for more than 30 years. Ruys Vloeren has installed millions of square metres for these industries in more than 20 countries. In fact, the largest Italian meat-processors buy their granite floors from Ruys.



#### THE UCRETE FLOOR – A CHEMICAL AND TEMPERATURE-PROOF FLOOR

The Ucrete floor is ideal for companies that process fruit and fruit juices and for the chemicals industry. Heavy wear involving chemicals such as lactic acid, acetic acid and hydrochloric acid has no effect on the floor, and at the right thickness the floor is also resistant to continuously boiling water and liquids at 120 °C. Where many other floor systems fail, Ucrete passes even the most demanding test.



#### THE REINFORCED SCREED FLOOR – EXTREMELY FLAT AND HARD

The reinforced screed floor is a standard in the Netherlands. It is the strongest cement-bound screed floor and made with materials that guarantee high durability. Moreover, the floor is dust-free and liquid-proof. In particular, companies with activities that involve intensive transport or heavy loads falling, shifting or being shunted benefit from this floor. Hundreds of distribution centres have already chosen the reinforced screed floor – and with good reason.

Zorg dat uw nieuwe vloer wel gezien wordt!

vhm | abc

accountants & belastingadviseurs  
audit  
consultants  
financieel advies

vhm | abc helpt u met een actuele en inzichtelijke administratie

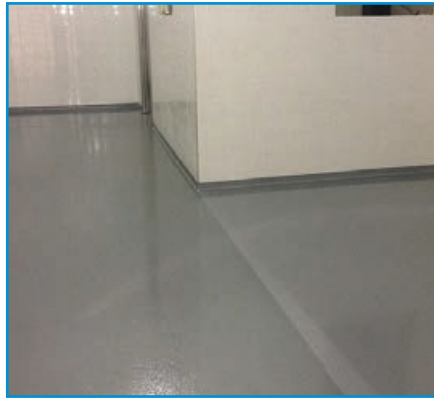
[www.vhmabc.nl](http://www.vhmabc.nl)





#### THE MARGIA STONE FLOOR – PUDDLE-FREE AND DURABLE

The Margia Stone floor, actually a combination of the Margia granite floor and the reinforced screed floor, provides a very good surface for spaces such as cold storage and dispatch rooms. The floor consists of hardwearing materials and natural granite. An added advantage is that this is an economical and puddle-free floor.



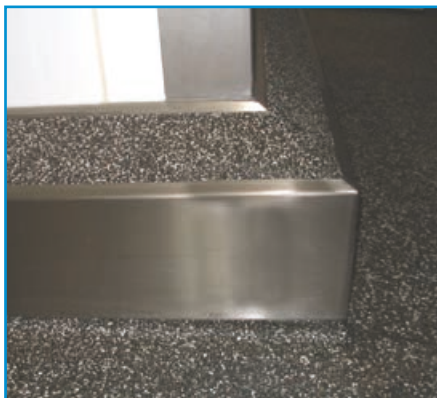
#### THE SYNTHETIC FLOOR – AESTHETIC AND FUNCTIONAL

For trowel floors, poured floors and coatings, De Bedrijfsvloer is the place to be. The specialists in this division have completed many projects at schools, healthcare institutions, swimming pools, car parks and production companies. These floors can be supplied in a spectrum of literally thousands of colours.



#### THE GRANITECH FLOOR – BRUTE STRENGTH

The Granitech floor is one of the strongest floors available. Owing to its unique mix of special cements, microsilica and polymers, this cement-bound floor also achieves a unique rapid full hardening. The floor can withstand heavy trucks and loading shovels within about 24 to 48 hours of installation. Many waste processors have already experienced this unparalleled strength.



#### BUMP CURBS – WALL PROTECTION AS STRONG AS THE FLOOR

Ruys is used to making floors that can take a knock and handle intensive transport. Often the walls turn out to be the weakest link. To protect walls as well, Ruys also carries bump curbs in its range.



#### STAINLESS STEEL DRAINS AND GUTTERS – HYGIENIC AND STRONG

The standard guarantee for a puddle-free floor must be accompanied by good drainage. Ruys proposes ways to achieve good drainage and an efficient slope plan. Like the floor itself, these elements must be able to withstand heavy and intensive traffic and sit well in the floor. Attention to details such as round interior finishing, sufficient anchorage and reinforced edges and lids ensure that everything happening on the floor is under control.



#### THE MARGIA CRETE FLOOR

The Margia Crete floor combines the strength and anti-slip qualities of the Margia granite floor with the moisture resistance and thin layers of the Ucrete. This makes it an unbeatable combination for floor renovations. Complete renovations can be realised within a few days, including hardening.

**RUYS**  
vloeren

## WANNEER HYGIËNE BELANGRIJK IS ...

**BLÜCHER®**



- Goot leegt efficiënt zelfs bij weinig water
- Geen noodzaak voor een productie stop om het filter te reinigen
- Geen noodzaak om de roosters te verwijderen voor het afsprengen van de goot
- Zekere en duurzame constructie ter voorkoming scheuren en barsten in de vloer als gevolg van verkeersbelasting en dagelijkse slijtage
- 360° plaatsing mogelijk

BLÜCHER® is een EHEDG-lid en heeft het eerste afwatering systeem met een HACCP-certificering.



NEW Hygienic BLÜCHER® Channel

BLÜCHER® EuroPipe



BLÜCHER® Drain



KEEPING UP THE FLOW

A selection of Ruys Vloeren's customers



umcg



VanDrie Group  
CONTROLLED QUALITY VEAL



WEGENER Media

Specialist in bouwoplossingen

Ruwbouw en gevels



• Metselmortel	• Gevelpleister
• Technische mortel- en betontoepassingen	• Gevelisolatiesystemen
• Lijmsystemen	• Gipspleister



Contacteer ons voor meer informatie over logistieke systemen,  
tailor-made solutions en werfbegeleiding: [info@cantillana.com](mailto:info@cantillana.com)  
[www.cantillana.com](http://www.cantillana.com)







**MonoConfalt** – Next generation of semi-flexible pavement and flooring system. A fusion between asphalt and concrete.

The patented MonoConfalt system is available as a floor screed and a self leveling system. A small variety of system concepts makes it easy for us to design and recommend the best solution for you. Please contact us for more information.

Contec Group is built on partnerships where more than 30 people in 20 countries are eager to help. One of our partners is Ruys Vloeren B.V. We are together with Ruys Vloeren B.V. looking forward to do business with you...

**CONTEC GROUP**  
 Axel Kiers Vej 30  
 8270 Højbjerg  
 Tlf: +45 86 721 722  
 www.contec-aps.com  
 info@contec-aps.dk



*That's well laid!*

**Ruys Vloeren B.V.**

Visitor address

Curacao 30 – 7332 BM Apeldoorn – The Netherlands

Mailing address

Postbus 558 – 7300 AN Apeldoorn – The Netherlands

Tel.: +31 (0)55 - 533 53 63 – fax: +31 (0)55 - 533 79 59 – e-mail: [info@ruysvloeren.nl](mailto:info@ruysvloeren.nl)

**[www.ruysvloeren.nl](http://www.ruysvloeren.nl)**