

BARRIERS CATALOGUE



SINTEX[®]

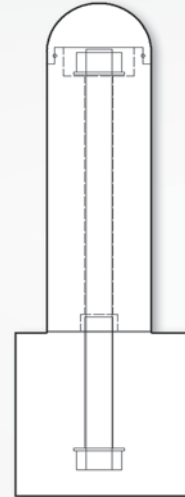
INTERNACIONAL DE SUMINISTROS S.L.



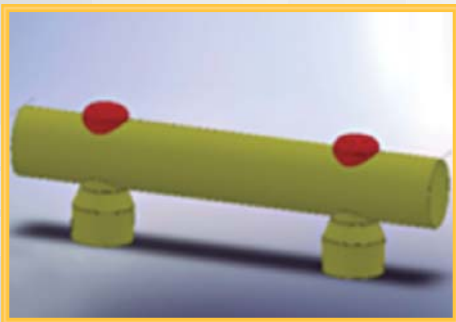
OUR WORK TEAM

SINTEX work team has 45 years of experience installing insulation projects and 25 manufacturing special materials aimed to the food industry (sandwich panel, high density polyethylene protections, solid P.V.C. sanitary profile)

www.sintex.es



SINTEX PROTECTIONS



SINTEX protections are designed to protect critical points in working areas as well as places where impacts or scratches may occur: walls, pillars, doors, restricted areas, corridors, exits, machinery, etc.

The use of highly developed tools plus our experience in the field has helped us achieving efficient protection systems as well as designing new solutions in order to help you protect your working areas.

Our protection systems are made of 100% Polyethylene Plus.

SINTEX is in continuous progress in every field, searching for new materials, updating machinery, training our staff....with just one objective:
Offer you the best

SINTEX industrial protections have been designed to resist hard environmental conditions as well as the use of aggressive cleaning products what makes them perfect for the food industry.



Designed to prevent the accumulation of water by means of o-rings and physical barriers which allows its cleaning without worrying about dampness bacterial growth.

Our polyethylene maintains its functionality at extreme temperatures, being able to endure thermal readings from +80°C to -100°C.

The high density Polyethylene Plus 100% used by **SINTEX** offers very important levels of elasticity and mechanical features which ensure high resistance to impacts.



Our formula with U.V. protection makes it highly suitable for outer installations; moreover it has been manufactured using pigmented material to avoid alterations as a consequence of scratches and hits.

The anchoring systems are developed by means of steel rods buried underground in a concentric way for a higher absorption of impacts and sound, in contrast to traditional protection systems which caused its breakage due to its low elasticity and bad anchoring system, leading to higher costs in spare parts and repairs. This system has been designed to avoid failure of the pavement.

SINTEX industrial protections are totally demountable and reusable as a result of their modular system specified in the catalog: their easy assembling method makes them the future solution.



APPLICATION SECTORS



BAKERY



DAIRY



WINE



FRUITS AND
VEGETABLES



MEAT



SEA
PRODUCTS



PHARMACEUTICAL



INDUSTRY



CAR INDUSTRY



TRANSPORT



LOGISTIC

- SHOCKPROOF BARRIERS MADE OF POLYETHYLENE PLUS
- UV RESISTANT
- ASEPTIC, RESISTANT TO ACIDS AND DETERGENTS
- MASSIVE POLYETHYLENE RESISTANT TO SCRATCHES
- HIGH VISIBILITY COLOUR, ACCORDING PASSIVE SECURITY STANDARDS
- SINGLE ROD FIXING SYSTEM
- LOW MAINTENANCE
- ABSORBS THE IMPACT AND DOES NOT SOUND
- IDEAL FOR FOOD INDUSTRY
- EASY CLEANING
- EASY TO DISASSEMBLE AND REUSABLE
- GUARANTEES SAFETY

BOLLARDS

REF	DIAMETER	HIGHT	STEELROD DIAMETER
-----	----------	-------	-------------------

B230	70 mm.	230mm.	M-16 *
------	--------	--------	--------

BB400	100mm.	400mm.	M-30
-------	--------	--------	------

B400	120mm.	400mm.	M-30
------	--------	--------	------

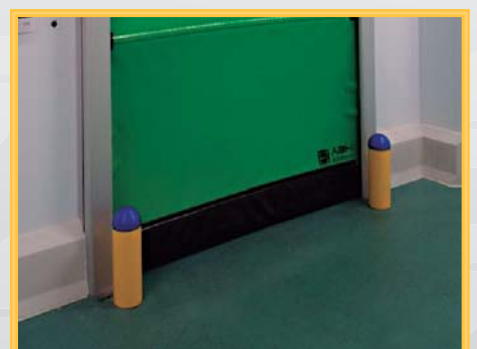
B500	120mm.	500mm.	M-30
------	--------	--------	------

B800	120mm.	800mm.	M-30
------	--------	--------	------

TRAFFIC
RECOMMENDED:



* Only manual pallet truck



SINGLE GUARDRAIL

REF	VERTICAL DIAMETER	HORIZONTAL DIAMETER	HIGHT	LENGTH	STEELROD DIAMETER
-----	-------------------	---------------------	-------	--------	-------------------

GA20	70mm.	70mm.	125mm.	2.000 mm.	M-16
GA15	70mm.	70mm.	125mm.	1.500 mm.	M-16
GA10	70mm.	70mm.	125mm.	1.000 mm.	M-16
GA05	70mm.	70mm.	125mm.	500 mm.	M-16

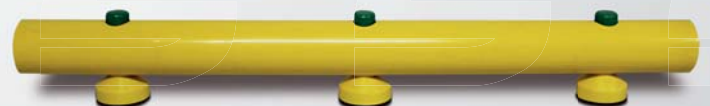
TRAFFIC
RECOMMENDED:



REF	VERTICAL DIAMETER	HORIZONTAL DIAMETER	HIGHT	LENGTH	STEELROD DIAMETER
-----	-------------------	---------------------	-------	--------	-------------------

GB20	100mm.	100mm.	155mm.	2.000 mm.	M-20
GB15	100mm.	100mm.	155mm.	1.500 mm.	M-20
GB10	100mm.	100mm.	155mm.	1.000 mm.	M-20
GB05	100mm.	100mm.	155mm.	500 mm.	M-20

TRAFFIC
RECOMMENDED:



REF	VERTICAL DIAMETER	HORIZONTAL DIAMETER	HIGHT	LENGTH	STEELROD DIAMETER
-----	-------------------	---------------------	-------	--------	-------------------

GR20	120 mm.	120mm.	175 mm.	2.000 mm.	M-20
GR15	120 mm.	120mm.	175 mm.	1.500 mm.	M-20
GR10	120 mm.	120mm.	175 mm.	1.000 mm.	M-20
GR05	120 mm.	120mm.	175 mm.	500 mm.	M-20

TRAFFIC
RECOMMENDED:

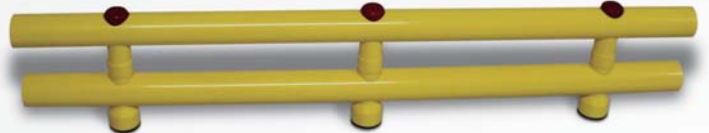


DOUBLE GUARDRAIL

REF	VERTICAL DIAMETER	HORIZONTAL DIAMETER	HIGHT	LENGTH	STEELROD DIAMETER
-----	-------------------	---------------------	-------	--------	-------------------

2GA20	70/55mm.	70mm.	240 mm.	2.000 mm.	M-16
2GA15	70/55mm.	70mm.	240 mm.	1.500 mm.	M-16
2GA10	70/55mm.	70mm.	240 mm.	1.000 mm.	M-16
2GA05	70/55mm.	70mm.	240 mm.	500 mm.	M-16

TRAFFIC
RECOMMENDED:



REF	VERTICAL DIAMETER	HORIZONTAL DIAMETER	HIGHT	LENGTH	STEELROD DIAMETER
-----	-------------------	---------------------	-------	--------	-------------------

2GB20	100/55mm.	100mm.	300mm.	2.000 mm.	M-20
2GB15	100/55mm.	100mm.	300mm.	1.500 mm.	M-20
2GB10	100/55mm.	100mm.	300mm.	1.000 mm.	M-20
2GB05	100/55mm.	100mm.	300mm.	500 mm.	M-20

TRAFFIC
RECOMMENDED:



REF	VERTICAL DIAMETER	HORIZONTAL DIAMETER	HIGHT	LENGTH	STEELROD DIAMETER
-----	-------------------	---------------------	-------	--------	-------------------

2GR20	120/55mm.	120mm.	340 mm.	2.000 mm.	M-20
2GR15	120/55mm.	120mm.	340 mm.	1.500 mm.	M-20
2GR10	120/55mm.	120mm.	340 mm.	1.000 mm.	M-20
2GR05	120/55mm.	120mm.	340 mm.	500 mm.	M-20

TRAFFIC
RECOMMENDED:



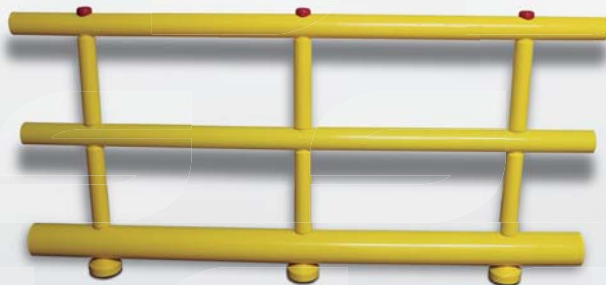
PEDESTRIANS BARRIER

REF	VERTICAL DIAMETER	HORIZONTAL DIAMETER	HIGHT	LENGTH	STEEL ROD DIAMETER
BAL20	120/55mm.	INF. 120mm./SUP 70mm.	800mm.	2.000 mm.	M-20
BAL15	120/55mm.	INF. 120mm./SUP 70mm.	800mm.	1.500 mm.	M-20
BAL10	120/55mm.	INF. 120mm./SUP 70mm.	800mm.	1.000 mm.	M-20
BAL05	120/55mm.	INF. 120mm./SUP 70mm.	800mm.	500 mm.	M-20

TRAFFIC
RECOMMENDED:



DOUBLE PEDESTRIANS BARRIER



REF	VERTICAL DIAMETER	HORIZONTAL DIAMETER	HIGHT	LENGTH	STEEL ROD DIAMETER
2BAL20	120/55mm.	INF. 120mm./SUP 70mm.	1.000mm.	2.000 mm.	M-20
2BAL15	120/55mm.	INF. 120mm./SUP 70mm.	1.000mm.	1.500 mm.	M-20
2BAL10	120/55mm.	INF. 120mm./SUP 70mm.	1.000mm.	1.000 mm.	M-20
2BAL05	120/55mm.	INF. 120mm./SUP 70mm.	1.000mm.	500 mm.	M-20

TRAFFIC
RECOMMENDED:

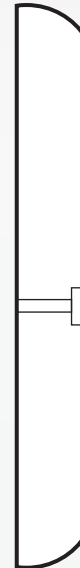


POLYETHYLENE WALL PROTECTION

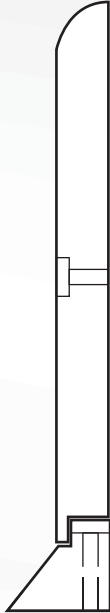
REF	LENGTH	WIDTH	THICKNESS
PE500 150/15W	2.000 mm	150mm	15 mm
PE500 150/20W	2.000 mm	150mm	20 mm
PE500 200/15W	2.000 mm	200mm	15 mm
PE500 200/20W	2.000 mm	200mm	20mm
PE500 250/15W	2.000 mm	250mm	15mm
PE500 250/20W	2.000 mm	250mm	20mm
PE500 300/20W	2.000 mm	300mm	20mm
PE500 500/20W	2.000 mm	500mm	20mm

*Available in length; 2,000mm

*Plugs included



POLYETHYLENE SOCKET



REF	WIDE	THICKNESS	LENGTH
-----	------	-----------	--------

PE500 150/20S	2.000 mm	150mm	20 mm
---------------	----------	-------	-------

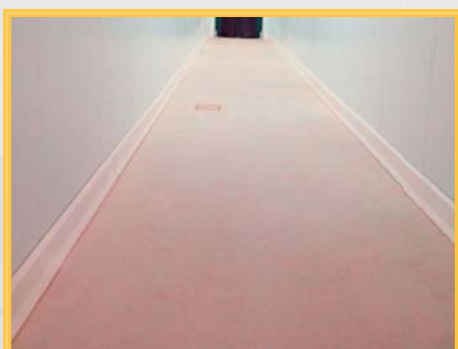
PE500 210/20S	2.000 mm	210mm	20 mm
---------------	----------	-------	-------

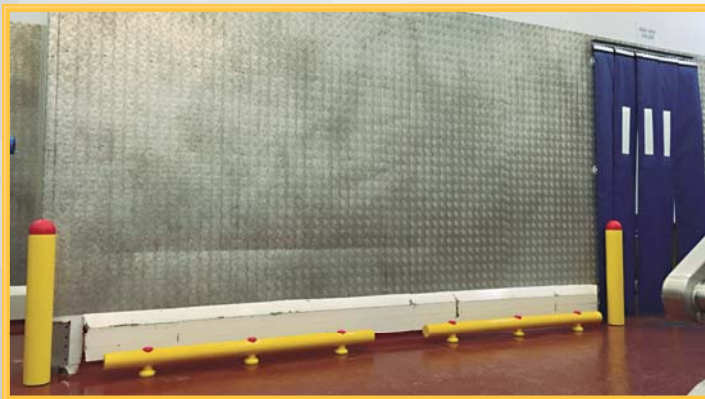
PE500 300/20S	2.000 mm	300mm	20 mm
---------------	----------	-------	-------

PE500 500/20S	2.000 mm	500mm	20 mm
---------------	----------	-------	-------

PE500 1000/20S	2.000 mm	1.000mm	20 mm
----------------	----------	---------	-------

Socket + base + plugs included









Ctra Montserrat a Montroy S/N
Apdo correos 288
46192 Montserrat (Valencia)
ESPAÑA
Tel. +34.96.311.55.35
Email: sintex@sintex.es
www.sintex.es