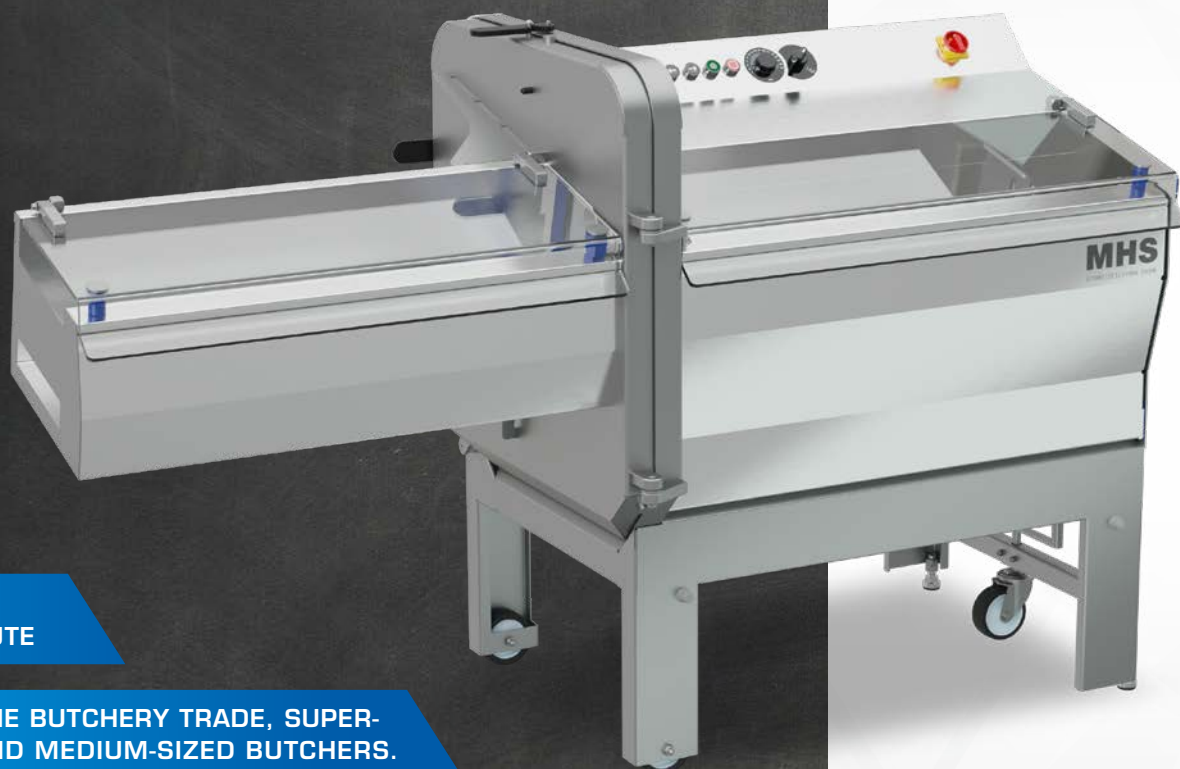


THE ECONOMICAL

CUT YOUR PRODUCTS FAST,
PRECISE AND RELIABLE.



UP TO 440
SLICES/MINUTE

IDEAL FOR THE BUTCHERY TRADE, SUPER-
MARKETS AND MEDIUM-SIZED BUTCHERS.

MHS
SCHNEIDETECHNIK GMBH



SMART CUTTING SYSTEM

High levels of accuracy
even with bone in products
thanks to MHS microtoothing.



EASY HANDLING

Per knob and buttons.
Immediately usable without
long training periods
of the staff.



CUTS ...

Meat, chops, necks,
pork belly, roulades,
roasts, sausage products,
cold cuts, cheese.



SMART HYGIENE

The construction reduces
the dirt to a minimum and
simplifies cleaning.





TOOLLESS
HANDLING



INTUITIVE
OPERATION



QUIET
SLICING



EASY TO
CLEAN



ENERGY
SAVING

PCE KM

The PCE range KM is easy to use, thanks to its clear use of symbols. The resulting shorter time spent training your employees, saves you money.

Learn more about our big seller and allow yourself to be convinced by the persuasive arguments!

PRODUCTIVITY:

- Up to 440 slices/minute
- Shorter cycles thanks to automatic return limiter
- Start device

SLICING RESULT:

- Precise result also for on the bone products due to MHS micro-toothed blade
- Exact feed due to less friction on structural surfaces
- Forward feed selectable, continuous or step by step
- Optimum hold due to adjustable gripper



VERSATILITY:

- Reinforced drive for beef products containing bones, e.g. T-bone steaks (-25 only)
- Extendable conveyor belt available in different length
- Shingling and separation of products in conjunction with a conveyor belt
- Stainless steel flaps
- Diversification of machines in product cross section and product length

HANDLING:

- Simple operation via clear symbols
- Short training period
- Highest safety level
- Machine on roller (-21)

FOR MORE MACHINES VISIT
WWW.MHS-SCHNEIDETECHNIK.DE

MHS

SCHNEIDETECHNIK GMBH

CONVEYOR BELT
OPTIONALLY AVAILABLE



MORE ON PAGE 22

Max. input length:
PCE 70 / 100 from 760 – 1160 mm

Cross section (WxH):
PCE 21 / 25 210x235 / 250x235 mm
PCE 30 / 36 300x150 / 360x235 mm

Performance:
Single blade 220 slices/minute
Double blade 440 slices/minute

Slice thickness: 1 – 32 mm (optional 1 – 50 mm)

Connection (with belt): 3Ph + PE 400V 50 Hz
PCE 21 / 25 2.7 (2.8) kW / 4.5 (4.6) kW
PCE 30 / 36 7.6 kW / 4.5 (4.6) kW

FURTHER TECHNICAL DATA AND
OVERVIEW OF MODELS ON PAGE 10