

# Tying Machines Series M

This range of machines combines high performance with excellent reliability to offer maximum productivity. Processing plants are able to yield quality products in less time, with fewer operators and at lower cost.

## Standard Features include:

- Wear-free AC Servomotors
- Automatic reset of knotting unit and ring
- Smart Motion Controller with LED displays
- Up to 63 strings/min
- Selector switch for 1, 2, 3, 4, cross- and continuous tying
- Larger bobbin reduces downtime for twine changeovers
- Interlocked removable catch tray prevents deposits, residues or product - scraps soiling the floor or the inside of the machine



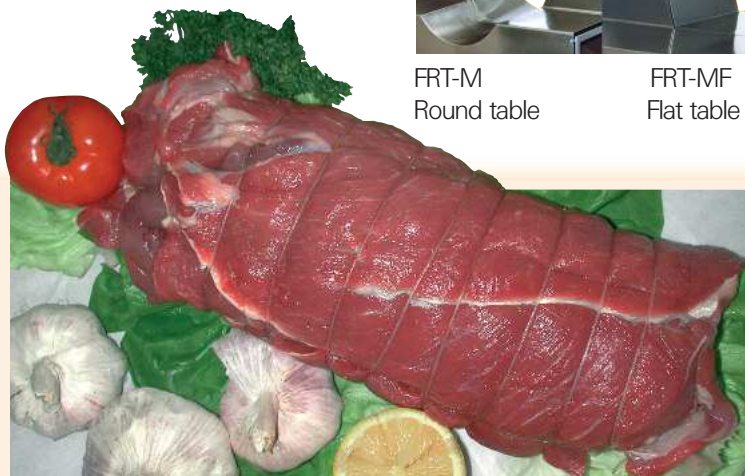
**FRT-M**  
**FRT-MF**  
**FRT-MF 400**



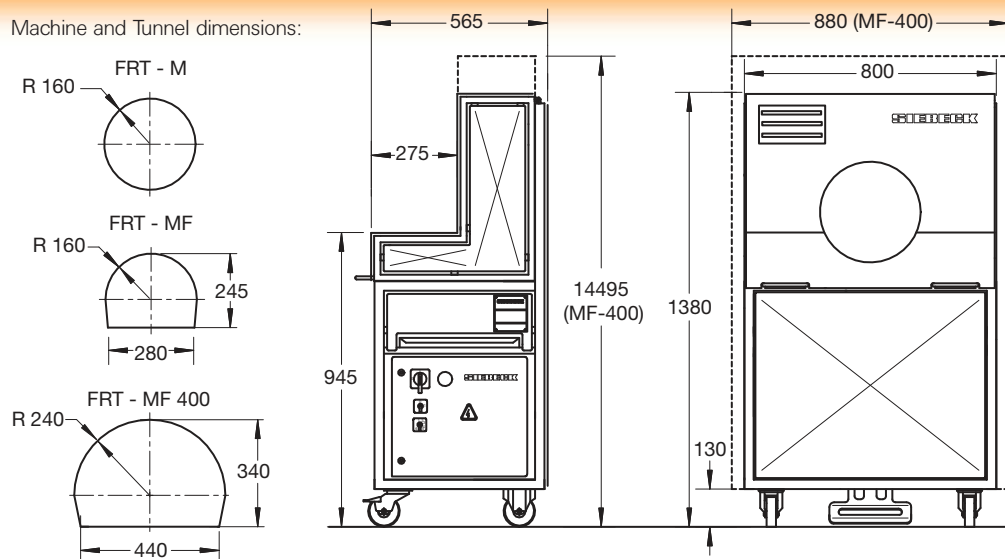
FRT-M  
Round table

FRT-MF  
Flat table

FRT-MF 400  
Large tunnel



Machine and Tunnel dimensions:



## Specifications

Connected load:  
170 - 260 V, AC, 50/60 Hz  
1,3 kW

Sound pressure level:  
72 dB (A) +/- 1

Weight:  
FRT-M, FRT-MF: 160 kg  
FRT-MF 400: 165 kg

**SIEBECK**  
VERPACKUNGSMASCHINEN