



Commercial Heavy

430 GSM | Standard & Flame Retardant

—
**Engineered
to withstand
extreme weather
conditions on
large scale tension
structures.**



**Architectural
SHADE FABRIC**

**Outdoor Recreation Areas
Car Park Structures
Sports Complexes**

Commercial Heavy 430

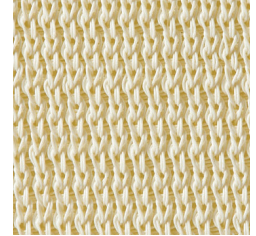
Architectural Shade Fabric specifically engineered to withstand extreme weather conditions on large scale tension structures

Made from 100% round monofilament HDPE yarn and with a patented intertwining knit pattern, Commercial Heavy 430 features superior biaxial and load bearing performance for optimum shade and tensioning endurance.

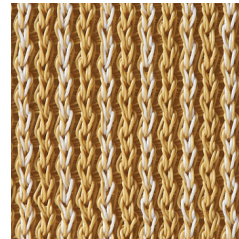
Heavy 430 offers up to 87.9% UVR Block protection and is available in 16 popular colors, making it easier than ever to complement existing design elements and color schemes.



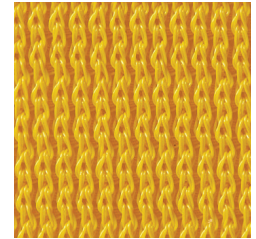
White
485863
492847



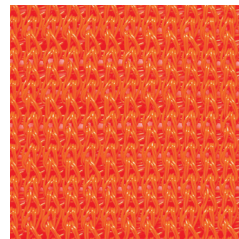
Natural
484347
492939



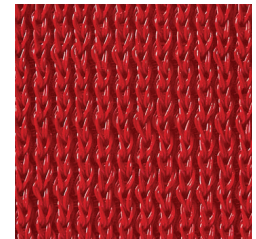
Desert Sand
484309
492878



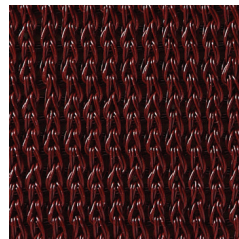
Yellow
485849
492830



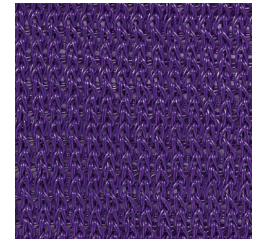
Orange
492786
492977



Cherry Red
484484
492892



Deep Ochre
484385
492885



Royal Purple
492793
492984

Patented
intertwining knit
pattern resulting
in superior biaxial
performance

100% round
monofilament
HDPE yarn for
optimal structural
stability



Commercial Heavy 430FR



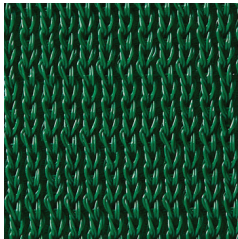
Aquatic Blue
484323
492953



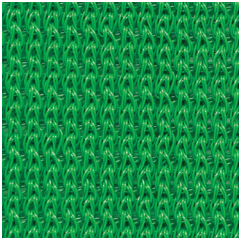
Navy Blue
484446
492861



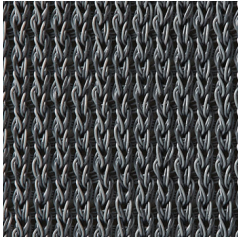
Brunswick Green
484361
492915



Emerald
485887
492946



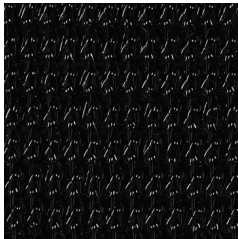
Bright Green
492779
492960



Steel Grey
484408
492854



Charcoal
484460
492908



Black
484422
492922

Durability and **FR** compliance are now combined to create premium fabrics providing maximum performance.

Only GALE Pacific offers the **WIDEST RANGE** of **FLAME RETARDANT** knitted fabrics globally.

Our FR fabrics meet the most stringent Fire Standards for shade fabrics including CSFM 1237.1 & NFPA 701 across all color variants with fabrics that offer biaxial stability and tensile properties, for minimal maintenance and improved fabric life.



Uniform balance across the warp and weft for easy fabrication and minimal maintenance

Stentered (heat set) for prevention of shrinking and ease of fabrication

Commercial Heavy 430

Performance

| | | |
|--------------------------|------|-----------|
| Tensile Strength | warp | 369.5 lbf |
| Elongation at max. force | warp | 88.33% |
| Tensile Strength | weft | 411.7 lbf |
| Elongation at max. force | weft | 127.7% |
| Wing tear (mean) | warp | 63.6 lbf |
| Wing tear (mean) | weft | 54 lbf |
| Burst pressure | | 416 lbf |

Fabric Properties

| | |
|---------------------|-------------------------|
| Nominal Fabric Mass | 430 gsm ± 20 |
| | 12.7 oz/yd ² |

Roll Specification

| | |
|--------|--------------------------------|
| Width | 3.0 m / 9ft. 10 in. (unfolded) |
| Length | 40 m / 131 ft. 3 in. |

Flammability

ASTM E 84 19B Class A

Commercial Heavy 430FR

Performance

| | | |
|--------------------------|------|-----------|
| Tensile Strength | warp | 282.2 lbf |
| Elongation at max. force | warp | 55.66% |
| Tensile Strength | weft | 361.8 lbf |
| Elongation at max. force | weft | 106% |
| Wing tear (mean) | warp | 55.8 lbf |
| Wing tear (mean) | weft | 48.7 lbf |
| Burst pressure | | 376 lbf |

Fabric Properties

| | |
|---------------------|-------------------------|
| Nominal Fabric Mass | 430 gsm ± 20 |
| | 12.7 oz/yd ² |

Roll Specification

| | |
|--------|--------------------------------|
| Width | 3.0 m / 9ft. 10 in. (unfolded) |
| Length | 40 m / 131 ft. 3 in. |

Flammability

ASTM E 84 19B Class A

CSFM 1237.1*

NFPA 701*

*Contact GALE Pacific for test reports and certificates



Data provided in this brochure represents typical averages from independent testing and quality assurance testing and should not be taken as a minimum specification nor as forming any contract between GALE Pacific and another party. Due to continuous product improvement, refer to the GALE Pacific Commercial Fabrics website for the latest technical performance information.

Please note, due to limitations of the printing process, colors pictured may not represent the true color.



GALE Pacific ANZ
145 Woodlands Drive,
Braeside, Victoria 3195
Australia
Toll Free: +1 800 331 521
au.cs@galepacific.com

GALE Pacific AMERICAS
5311 77 Center Drive, Suite 150,
Charlotte, NC 28217
USA
Toll Free: +1 800 560 4667
cscommercial@galepacific.com

GALE Pacific MIDDLE EAST
JAFZA 15, 6th Floor, Room 604,
Jebel Ali Free Zone, Dubai
United Arab Emirates
+971 4 881 7114
cscommercial@galepacific.com

GALE Pacific ASIA
777 Hengshan W Road,
Beilun, Ningbo, Zhejiang 315800
China
Toll Free: +1 800 331 521
au.cs@galepacific.com

GALE Pacific EUROPE
Toll Free: +1 800 560 4667
cscommercial@galepacific.com

galecommercial.com