



正威新材

股票代码：002201



**江苏九鼎特种纤维有限公司**  
JIANGSU JIUDING SPECIAL FIBER CO.,LTD.



## About Us 关于我们



江苏正威新材料股份有限公司（原江苏九鼎新材料股份有限公司），成立于1994年，地处长江三角洲上海经济圈内。公司专业从事特种玻璃纤维纱、织物及其制品、玻璃钢制品的生产和销售，被中国玻璃纤维工业协会命名为中国玻璃纤维制品深加工基地，是国内纺织型玻纤制品龙头企业、全球增强砂轮用玻纤网片供应商、二元高硅氧纤维及其制品专业制造商。

江苏九鼎特种纤维有限公司，系上市公司江苏正威新材料股份有限公司全资控股公司。拥有二元高硅氧从窑炉拉丝，到高硅氧连续纤维纱、短切纤维纱、各类织物及多种制品的全产业链生产技术，专业从事二元高硅氧玻璃纤维、织物及各类制品的研发、生产和销售。公司始终坚持以客户为中心的卓越理念，凭借产品品种全、产品性能优、产能规模大、营销服务强等产业优势，取得了较高的市场占有率，产品品质达到国际先进水平，受到国内外客户的一致好评。公司二元高硅氧窑炉技术已经经过试验窑炉和一代窑炉的不断优化升级，目前年产能6500吨的二代窑炉正在稳定运行中，新建年产一万吨的高硅氧纤维及制品的三代窑炉，将于2023年底建成投产。

发展中的九鼎特纤正快步迈入新时代中国经济发展格局，期待与您携手并进、共创辉煌！

Jiangsu Amer New Material Co., Ltd.(Former Jiangsu Jiuding New Material Co., Ltd.), founded in 1994, is located in the Yangtze Delta Shanghai Economic Circle. The company specializes in the production and sales of special fiberglass yarns, fabrics and products. It has been named as a deep processing base for fiberglass products in China by Chinese Fiberglass Industry Association. It is a leading domestic textile fiberglass product enterprise, a global supplier of fiberglass mesh for reinforced grinding wheels, and a professional manufacturer of binary high silica fibers and their products.

Jiangsu Jiuding Special Fiber Co., Ltd. is a wholly-owned subsidiary of Jiangsu Amer New Materials Co., Ltd., The company has a full industry chain production technology of binary high silica from furnace drawing to continuous high silica fiber yarn, chopped strand, various fabrics, and various products. Specialized in the production of high silica glass fibers, fabrics, and various products. The company always adheres to the excellent concept of taking customers as the center with advantages of full product variety, excellent product performance, large production capacity, and strong marketing services, It has achieved a high market share and the product quality has reached the international advanced level, which has been well received by customers at home and abroad. The company's binary high silica kiln technology has undergone two rounds of optimization through experimental kilns and first generation kilns. Currently, the second generation kiln with an annual production capacity of 6500 tons is operating steadily. At the same time, the third generation kiln with an annual production capacity of 10000 tons of high silica fibers and production line is expected to be completed and put into operation by the end of 2023.

Jiuding Special Fiber, which is developing, is striding into the economic development pattern of China in the new era. We look forward to working hand in hand with you to create brilliant future!



做特种玻璃纤维新材料、新能源领军企业

Be a leading enterprise in special glass fiber new materials and new energy industry





**使命：** 鼎立天地 得报社会

**愿景：** 做特种玻璃纤维新材料、新能源领军企业

**价值观：** 在九鼎成功与社会进步中实现自我

**企业精神：** 集聚智慧 创造奇迹

**经营理念：** 客户的成功才是我们的成功

**Mission:** Make success and repay society

**Vision:** Be a leading enterprise in special glass fiber new materials and new energy industry

**Value:** Realize yourself in the success of Jiuding and social development

**Enterprise spirit:** Gather wisdom to create miracles

**Business philosophy:** Help customers achieve business success is our real success





# Product Introduction

## 产品简介

高硅氧玻璃纤维是一种硅含量96%以上、能长期在1000℃工况下使用、瞬间使用温度可达1450℃的特种纤维，具有优良的耐高温、耐烧蚀、高绝缘、耐酸性等性能。

公司现有高硅氧缎纹布、平纹布、网格布、涂层布、短切纱、连续纱以及绳、织带、套管等系列产品。广泛应用于消防灭火救援、新能源应用、耐高温绝缘、金属熔体过滤等领域，尤其在军事、国防、航空、航天等工业中有重要用途，质量稳定达到国际先进水平。

High silica glass fiber is a special fiber with  $\text{SiO}_2$  content of more than 96%, which can be used at 1000°C for a long time and the instantaneous temperature can exceed 1450°C. It has excellent high temperature resistance, ablation resistance, high insulation, acid resistance and other properties.

The company currently has a series of products including high silica satin fabric, plain fabric, mesh, coated fabric, chopped strand, continuous yarn, as well as rope, ribbon, sleeve, etc. Widely used in the fields of fire extinguishing and rescue, new energy applications, high-temperature insulation, metal melt filtration, and other fields, especially in the military, national defense, aviation, and aerospace industries, quality can reach international advanced levels stably.





# High Silica Satin Cloth

## 高硅氧缎纹布

### Performance and Characteristics

#### 性能与特点

高硅氧缎纹布是一种耐热、绝缘、柔软的特种玻璃纤维织物，其耐高温、耐腐蚀性强，对绝大多数化学品呈惰性，具有强度高、易加工、用途广、化学性能稳定的特点，并可根据用户要求进行表面涂覆处理等。

High silica satin cloth is a kind of special glass fiber fabric with heat resistance, insulation, softness, easy processing and wide use. It can be used as high temperature resistant, ablation resistant, heat insulation and heat preservation material.

### Applications

#### 产品应用

主要用作耐高温隔热、保温防护、密封、防火等材料，如焊接隔帘、防火卷帘、灭火毯、防火服、隔热挡帘、耐高温软接头、蒸汽管线隔热、冶金铸造隔热防护、窑炉及高温工业炉保护罩、电线电缆防火隔热等。

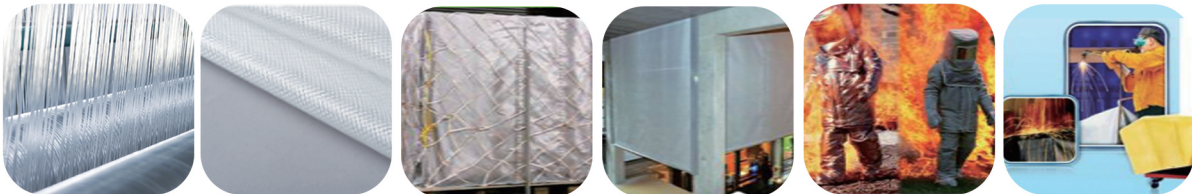
The cloth is mainly used for high temperature heat insulation, heat preservation and protection, sealing, fireproof materials etc, such as welding curtains, fire shutters, fire blankets, fireproof clothing, heat insulation curtains, high temperature soft joints, steam pipeline heat insulation, metallurgical casting insulation protection, kiln and high temperature industrial furnace protective cover, wire and cable fire insulation, etc.

### Technical Data Sheet

#### 技术参数表

规格型号 Spec	质量Mass (g/m <sup>2</sup> )	密度Density (ends/25mm)		厚度 Thickness (mm)	拉伸断裂强力 Tensile Strength (N/25mm)		SiO <sub>2</sub> (%)	热失量 Heat Loss (%)	组织结构 Weave
		经向 Warp	纬向 Weft		经向 Warp	纬向 Weft			
BWT300(不烧结)	300±30	37±3	30±3	0.32±0.03	≥1000	≥800	≥96	≤10	缎纹Satin
BWT400(不烧结)	420±50	32±3	28±3	0.40±0.04	≥1000	≥800	≥96	≤10	缎纹Satin
BWT600(不烧结)	600±50	50±3	35±3	0.58±0.06	≥1700	≥1200	≥96	≤10	缎纹Satin
BWT900(不烧结)	900±100	37±3	30±3	0.82±0.08	≥2400	≥2000	≥96	≤10	缎纹Satin
BWT1000(不烧结)	1000±100	40±3	33±3	0.95±0.10	≥2700	≥2000	≥96	≤10	缎纹Satin
BWT1100(不烧结)	1100±100	48±3	32±3	1.00±0.10	≥3000	≥2400	≥96	≤10	缎纹Satin
BWT1350(不烧结)	1350±100	40±3	33±3	1.20±0.12	≥3200	≥2500	≥96	≤10	缎纹Satin
BWT400	420±50	33±3	29±3	0.45±0.05	≥350	≥300	≥96	≤2	缎纹Satin
BWT600	600±50	52±3	36±3	0.65±0.10	≥400	≥300	≥96	≤2	缎纹Satin
BWT1100	1100±100	50±3	32±3	1.05±0.10	≥700	≥400	≥96	≤2	缎纹Satin
BWT1350	1350±100	52±3	28±3	1.20±0.12	≥750	≥400	≥96	≤2	缎纹Satin

注：可根据客户具体需求定制。 Note: Can be customized according to customer requirements.





# High Silica Plain Cloth

## 高硅氧平纹布

### Performance and Characteristics

#### 性能与特点

该产品质地柔软、轻薄，是一款耐热、绝缘的特种玻璃纤维织物，具有易加工、用途广的特点，主要用作耐高温、耐烧蚀、隔热、保温材料的基材。

The product is soft, light and thin. It is a heat-resistant and insulating special glass fiber fabric. It is easy to process and has a wide range of uses. It is mainly used as a base material for high temperature resistance, ablation resistance, heat insulation and thermal insulation materials.

### Applications

#### 产品应用

主要用于增强各种树脂，作为耐高温、耐烧蚀材料（如发动机喷管、喉衬）、增强PTFE用于透波材料（如飞行器的天线罩）等复合材料的基材。

It is mainly used to strengthen various resins, as high temperature and ablation resistant materials (such as engine nozzles, throat linings), and reinforced PTFE used for wave-transmitting materials (such as aircraft radomes) substrates for composite materials etc.

### Technical Data Sheet

#### 技术参数表

规格型号 Spec	质量Mass (g/m²)	密度Density (ends/25mm)		厚度 Thickness (mm)	幅宽 Width (cm)	拉伸断裂强力 Tensile Strength (N/25mm)		SiO <sub>2</sub> (%)	热失量 Heat Loss (%)	组织结构 Weave
		经向 Warp	纬向 Weft			经向 Warp	纬向 Weft			
BWT260	240±20	35.0±2.5	35.0±2.5	0.260±0.026	82或100	≥290	≥190	≥96	≤2	平纹Plain

注：可根据客户具体需求定制。 Note: Can be customized according to customer requirements.





# High Silica Mesh

## 高硅氧网布

### Performance and Characteristics

性能与特点

高硅氧网布是一种耐热、绝缘、柔软、吸附性好的特种玻璃纤维网格织物，网孔尺寸为1.5-2.5mm，具有良好的耐高温、耐金属熔体冲刷的性能，发气量低，滤渣效果好，使用方便等。能长期在1000℃环境下使用，瞬间耐热温度可达1450℃。

High silica mesh is a special glass fiber mesh fabric with heat resistance, insulation, softness and good adsorption. The mesh size is 1.5-2.5mm , The performance of resistance to metal melt erosion, low gas generation, good residue filter effect, easy to use and so on. It can be used in a 1000℃ environment for a long time, and the instantaneous heat resistance temperature can reach 1450℃.

### Applications

产品应用

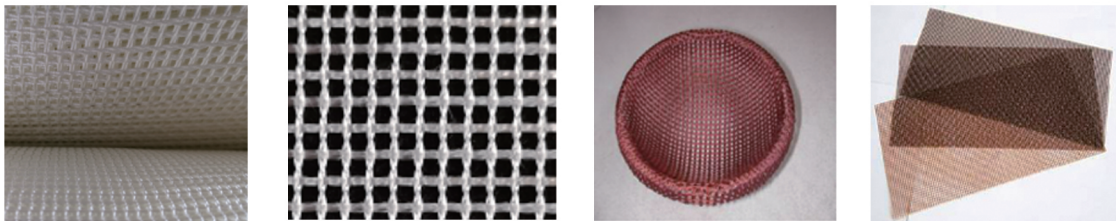
主要用于制作耐高温用铸造过滤网片、铸造过滤异形网，也可作为耐高温材料的复合基材。  
It is mainly used to make high temperature resistant casting filter mesh, casting filter special-shaped mesh, and can also be used as a composite substrate for high temperature resistant materials.

### Technical Data Sheet

技术参数表

规格型号 Spec	密度 Density (ends/25mm)		网孔 Mesh Size (mm)	质量 Mass (g/m²)	幅宽 Width (cm)	拉伸断裂强力 Tensile Strength (N/25mm)		SiO <sub>2</sub> (%)	热失量 Heat Loss (%)	组织结构 Weave
	经向 Warp	纬向 Weft				经向 Warp	纬向 Weft			
BWT7×7	8.0±0.6	8.0±0.6	2.5±0.2	135±10	45-150	≥70	≥80	≥96	≤2	纱罗Leno
BWT8×8	9.0±0.6	9.0±0.6	2.0±0.2	160±10	45-150	≥70	≥80	≥96	≤2	纱罗Leno
BWT10×10	10.0±0.5	10.5±0.5	1.5±0.3	160±10	45-150	≥70	≥80	≥96	≤2	纱罗Leno
BWT2.5	6.0±0.6	6.0±0.6	2.5±0.2	410±20	45-150	≥100	≥100	≥96	≤2	纱罗Leno
BWT2.0	6.5±0.6	6.5±0.6	2.0±0.2	460±20	45-150	≥100	≥100	≥96	≤2	纱罗Leno
BWT1.5	7.0±0.7	7.0±0.7	1.5±0.3	490±20	45-150	≥100	≥100	≥96	≤2	纱罗Leno

注：可根据客户具体需求定制。 Note: Can be customized according to customer requirements.



# High Silica Chopped Strands

## 高硅氧短切纱

### Performance, Characteristics & Applications

性能、特点及产品应用

高硅氧短切纱采用高硅氧玻璃纤纱切断加工而成，具有耐高温、耐烧蚀、耐腐蚀等特点，其卓越的性能，逐渐成为取代石棉和陶瓷纤维的主要保温隔热材料。该产品可直接作为保温填充材料，也可用于生产高硅氧针刺毡和高硅氧湿法毡等，还可用作增强材料，和有机树脂混合，制作耐烧蚀体，如导弹隔热罩等。

High silica chopped strands is cut and processed by high-silicon glass fiber yarn. and it has the characteristics of high temperature resistance, ablation resistance and corrosion resistance. Its excellent performance has gradually become the main substitute for asbestos and ceramic fibers. Thermal insulation material. This product can be directly used as insulation filling material, and can also be used to produce high-silica needled felt and high-silica wet-laid felt, etc. It can also be used as a reinforcing material, mixed with organic resin, to make ablation-resistant bodies, such as missile heat insulation cover etc.

### Technical Data Sheet

技术参数表

规格型号 Spec	纤维直径 Filament Diameter ( $\mu\text{m}$ )	纤维长度 Length (mm)	含水 Moisture content (%)	热失量 Heat Loss (%)	SiO <sub>2</sub> (%)	使用温度 Temperature ( $^{\circ}\text{C}$ )
BCT7-3/9	7.0 $\pm$ 1.1	3-9	$\leq$ 1	$\leq$ 3	$\geq$ 96	1000
BCT9-3/9	9.0 $\pm$ 2.0	3-9	$\leq$ 1	$\leq$ 3	$\geq$ 96	1000
BC9-50/100	9.0 $\pm$ 3.0	50-100	$\leq$ 7	$\leq$ 10	$\geq$ 96	1000
BST7-24/950	7 $\pm$ 1.1	24-950	$\leq$ 1	$\leq$ 3	$\geq$ 96	1000

注：可根据客户具体需求定制。 Note: Can be customized according to customer requirements.



# High Silica Continuous Yarn

## 高硅氧连续纱

### Performance, Characteristics & Applications

性能、特点及产品应用

高硅氧连续纱是将原始玻璃纤维纱经酸处理、热处理、表面处理等，加工而成的高硅氧连续纱，正常使用温度1000 $^{\circ}\text{C}$ 。

主要应用：耐高温织物的编织、缝制、捆绑、缠绕电热丝和发热元件，绝热材料，密封件等，如套管、缝纫线、电子烟内芯等。

High-silica continuous yarn is a high-silica continuous yarn processed by acid treatment, heat treatment and surface coating of original glass fiber yarn. The operating temperature is 1000  $^{\circ}\text{C}$ .

Main applications: weaving, sewing and bundling of high temperature resistant fabrics, winding heating wires and heating elements, thermal insulation materials, seals etc, such as sleeves, sewing threads, electronic cigarette cores, etc.

规格型号 Spec	纱线直径 Diameter (mm)	线密度 Linear Density (tex)	断裂强力 Tensile Strength (N)	SiO <sub>2</sub> (%)	含水 Water Content (%)	可燃物 Oiliness (%)	使用温度 Temperature ( $^{\circ}\text{C}$ )
HCT9-200SB	0.45 $\pm$ 0.05	200 $\pm$ 20	$\geq$ 40.0	$\geq$ 96	$\leq$ 3	18.0 $\pm$ 2.0	1000
HCT7-216SB	0.45 $\pm$ 0.05	216 $\pm$ 20	$\geq$ 54.0	$\geq$ 96	$\leq$ 3	18.0 $\pm$ 2.0	1000

注：可根据客户具体需求定制。 Note: Can be customized according to customer requirements.





# High Silica Coating Fabrics

## 高硅氧涂层布

### Performance, Characteristics & Applications

#### 性能、特点及产品应用

高硅氧涂层布是以高硅氧布为基材，由硅橡胶、铝箔、蛭石或其他材质，经涂附或覆合而成，是一种高性能、多用途的复合材料。已被广泛应用于航天，化工，石油，大型发电设备，机械，冶金，电气绝缘，建筑，交通等领域。

High silica coating cloth is based on high silica cloth, which is made of silicone rubber, aluminum foil, vermiculite or other materials, and is coated or laminated. It is a high-performance and multi-purpose composite material. It has been widely used in aerospace, chemical industry, petroleum, large power generation equipment, machinery, metallurgy, electrical insulation, construction, transportation and other fields.



# High Silica Bulk Cloth

## 高硅氧膨体布

### Performance, Characteristics & Applications

#### 性能、特点及产品应用

高硅氧膨体布是采用高硅氧膨体纱线编织的布状耐火产品。与传统的高硅氧布相比，具有厚度高、重量轻、优异的保温隔热效果等优点。高硅氧膨体布的厚度可达到4mm。

主要用于各种机械设备和管道外部隔热和保温，可加工焊接布、防火帘、防火服、防火手套、防火鞋套、保温套、保温被等。

High silica bulk cloth is a kind of cloth-shaped refractory product woven with high silica bulked yarn. Compared with the traditional high silica cloth, it has the advantages of high thickness, light weight, excellent thermal insulation effect and so on. The thickness of high silica expanded cloth can reach 4mm.

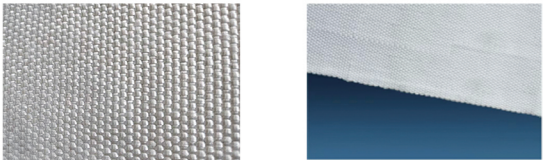
It is mainly used for external heat insulation and heat preservation of various mechanical equipment and pipelines, and can process welding cloth, fire curtain, fire-proof clothing, fire-proof gloves, fire-proof shoe covers, heat-proof covers, heat-proof quilts, etc.

### Technical Data Sheet

#### 技术参数表

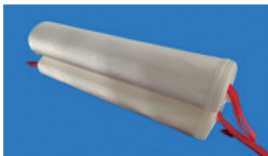
规格型号 Spec	厚度 Thickness (mm)	质量 Mass (g/m <sup>2</sup> )	宽度 Width (cm)	密度Density (ends/25mm)		SiO <sub>2</sub> (%)	热失量 Heat Loss (%)	使用温度 Temperature (°C)	组织结构 Weave
				经向 Warp	纬向 Weft				
2.0mm	2.0±0.8	1300±130	50-130	14.0±1.0	7.0±1.0	≥96	≤10	1000	平纹Plain
3.0mm	3.0±1.0	1800±180	50-130	11.0±1.0	5.0±1.0	≥96	≤10	1000	平纹Plain

注：可根据客户具体需求定制。 Note: Can be customized according to customer requirements.



# High Silica Fire Blanket

## 高硅氧灭火毯



由高硅氧玻璃纤维编织，经高硅氧缝纫线缝制而成，用于扑灭汽车等较大设施、设备火灾，防止火灾蔓延的大面积毯子。  
It is a large-area blanket woven from high-silica glass fiber and sewn with high-silica glass fiber sewing thread,used to extinguish fires in cars or other equipment, prevent the spread of fire.

### Fire Extinguishing

#### 灭火原理

覆盖火源、隔绝空气，以达到灭火目的。  
Cover the fire source and isolate the air to achieve the purpose of extinguishing the fire.

### Performance, Characteristics & Applications

#### 性能、特点及产品应用

- 1) 长期耐热温度1000℃，瞬时耐热温度达1450℃。
  - 2) 使用后无二次污染，环保无毒。
  - 3) 配置简单、携带便利、能快速使用。
- 适用于汽车高度集中的地点，如充电站、加油站、停车场、隧道、服务区等场所，主要用于扑灭汽车类火灾，防止火灾蔓延。
- 1) The long-term heat resistance temperature is 1000℃, and the instantaneous heat resistance temperature reaches 1450℃.
- 2) No secondary pollution after use, environmental protection and non-toxic.
- 3) Simple configuration, easy to carry, and quick to use.
- It is suitable for places where vehicles are highly concentrated, such as charging stations, gas stations, parking lots, tunnels, service areas, etc. It is mainly used to extinguish automobile fires and prevent the spread of fires.

### Technical Data Sheet

#### 技术参数表

规格型号 Spec		使用温度 Temperature (℃)	重量 Weight (Kg)	SiO <sub>2</sub> (%)	热收缩率 Thermal Shrinkage (%)
长度Length (mm)	宽度Width (mm)				
5000	5000	1000	15±2	≥96	≤9
7000	7000	1000	30±3	≥96	≤9
8000	6000	1000	29±3	≥96	≤9
9000	6000	1000	33±3	≥96	≤9

注：可根据客户不同需求定制。 Note: Can be customized according to customer requirements.





# High Silica Tape

## 高硅氧织带

### Performance, Characteristics & Applications

性能、特点及主要应用

高硅氧织带是采用高硅氧玻璃纤维编织而成的带状耐火产品，主要应用于高温绝热、密封、增强、绝缘等工况下的捆扎、包裹等。

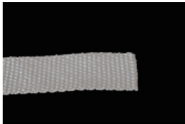
High silica tape is a ribbon refractory product woven from high silica glass fiber, mainly used for bundling and wrapping under high temperature insulation, sealing, reinforcement, insulation and other working conditions.

### Technical Data Sheet

技术参数表

规格型号Spec	厚度 Thickness (mm)	幅宽 Width (cm)	密度Density (ends/25mm)		卷长 Length (m)	SiO <sub>2</sub> (%)	使用温度 Temperature (°C)
			经向 warp	纬向 weft			
BT300	0.3±0.1	5-20	20.0±3.0	25.0±3.0	30~50	≥96	1000
BT500	0.5±0.1	5-20	32.5±3.0	30.0±3.0	30~50	≥96	1000
BT600	0.6±0.1	5-20	32.5±3.0	30.0±3.0	30~50	≥96	1000
BT700	0.7±0.2	5-20	32.5±3.0	25.0±3.0	30~50	≥96	1000
BT2000 (膨体)	2.0±0.5	5-15	14.0±1.0	7.0±1.0	30	≥96	1000
BT3000 (膨体)	3.0±0.5	5-15	11.0±1.0	5.0±1.0	30	≥96	1000
BT5000 (膨体)	5.0±1.0	5-15	22.0±1.0	5.0±1.0	30	≥96	1000

注：可根据客户不同需求定制。 Note: Can be customized according to customer requirements.



# High Silica Sleeve

## 高硅氧套管

### Performance, Characteristics & Applications

性能、特点及主要应用

高硅氧套管是采用高硅氧玻璃纤维编织而成的管状耐火产品。主要应用于高温隔热、绝缘、绝热密封等工况下的电器热保护材料、导线耐高温绝缘材料等。

High silica sleeve is a tubular refractory product woven with high silica glass fiber. It is mainly used as electrical thermal protection materials and high temperature resistant insulation materials for conductors under high temperature insulation, insulation, thermal insulation and sealing conditions.

### Technical Data Sheet

技术参数表

规格型号 Spec	内径 Internal Diameter (mm)	壁厚Thickness (mm)	质量Mass (g/m)	SiO <sub>2</sub> (%)	使用温度 Temperature (°C)
BSLT2-0.5	2.0±1.0	0.5±0.2	8.0±2.0	≥96	1000
BSLT3-0.5	3.0±2.0	0.5±0.2	3.0±1.0	≥96	1000
BSLS13-1.0	13.0±3.0	1.0±0.3	32.0±8.0	≥96	1000
BSLS60-0.8	60.0±15.0	0.8±0.5	104.0±25.0	≥96	1000
BSLS40-3.0 (膨体)	40.0±8.0	3.0±1.0	163.0±30.0	≥96	1000
BSLS50-4.0 (膨体)	50.0±10.0	4.0±1.0	240.0±30.0	≥96	1000

注：可根据客户不同需求定制。 Note: Can be customized according to customer requirements.





扫码关注 了解更多

地址 ( Add ) : 江苏省如皋市中山路2号

No.2, East Zhongshan Road, Rugao City, Jiangsu Prov.

电话 ( Tel ) : +86-0513-80695228 13861929568 13511585087 18795765566

传真 ( Fax ) : +86-0513-80695248

网站 (Web): [www.jiuding-specialfiber.com](http://www.jiuding-specialfiber.com)

邮箱 ( E-mail ) : [sunny@jiudinggroup.com](mailto:sunny@jiudinggroup.com)