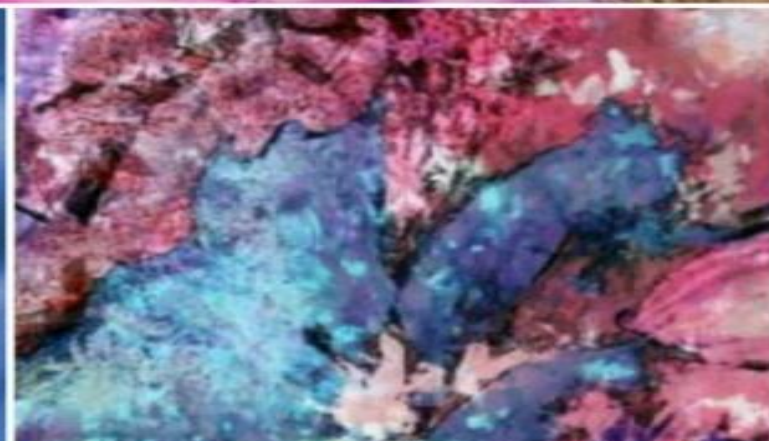


cnm
textil
a.s.

Bespoke Performance Fabrics
for Home, Fashion, Workwear,
& Technical Usage

w w w . c n m . c z



About Us:

CNM textile a.s. operates a Textile Finishing Mill in Oskava, Czech Republic (EU Member) and deals with “Bleaching, Dyeing, Printing, Digital Printing and other special finishes of woven fabrics in various blends including Cotton, Linen (Flax), Polyester, Blended and also Technical Fibers.

CNM Textil, has evolved into a dynamic and forward-thinking textile manufacturer, consistently pushing the boundaries of creativity and craftsmanship. Our state-of-the-art facilities and a team of skilled professionals enable us to deliver fabrics that not only meet but exceed industry standards.

At CNM Textil, we take pride in being a leading force in the textile industry, offering an extensive range of high-quality fabrics and unparalleled services. With a commitment to innovation, sustainability, and customer satisfaction, we have become a trusted partner for businesses worldwide.

CNM Textil a.s. owned and operate a vertically composite textile group in Pakistan operating under the ambit of Samira Industries (Pvt) Ltd and Samira Fabrics (Pvt) Ltd. with operation including Spinning, Weaving, Dyeing, Printing and Finished Products aimed at the Fashion, hotel and hospitality sector in EU with group turnover of USD 50 million.

Our Commitment: At CNM Textil, we are committed to sustainability and ethical practices. Our production processes prioritize eco-friendly methods, ensuring minimal environmental impact. Additionally, we actively engage in fair labor practices, fostering a positive impact on both the industry and our communities.

Products and Services:

- **Premium Fabrics:** Our diverse collection of premium fabrics is meticulously crafted to cater to the varied needs of the fashion, workwear and home textile industries. From luxurious linen to durable cotton blends, our fabrics are known for their exceptional quality and timeless appeal.
- **PFGD Fabrics:** PFGD (Prepare for Garment Dyed)
- **Dyed Fabrics:** A vibrant array of colours with our premium dyed fabrics, crafted with precision and care.
- **Rotary Printed Fabrics:** Elevate your collection with our printed fabrics that boast unique and trendy designs, adding a touch of style to any project.
- **Digital Printed Fabrics:** Embracing the digital era, CNM Textil introduces a captivating range of reactive digital printed fabrics. Harnessing the power of advanced printing techniques, these fabrics boast unparalleled clarity and sharpness, allowing for limitless design possibilities.
- **Military and Technical Division:** We have strong capabilities to dye, print, and finish technical, workwear, and uniform fabrics. We would like to offer a wide range of products with various blends including Cotton, Nylon, Rayon and Polyester. All articles are available in Camouflage prints.
- **Customization Services:** Recognizing the unique requirements of our clients, CNM Textil offers tailored customization services. Whether it's a specific colour palette, pattern, or fabric composition, our team collaborates closely with clients to bring their visions to life.

WOVEN FABRICS



Greige/PFGD



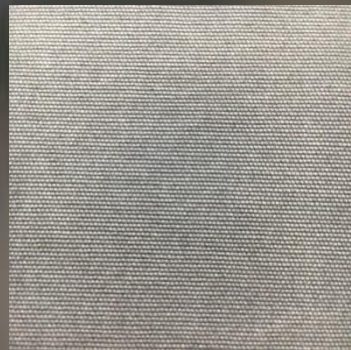
Dyed



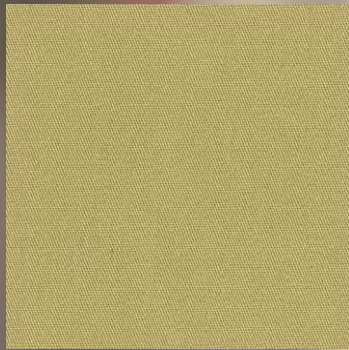
Printed



Yarn Dyed



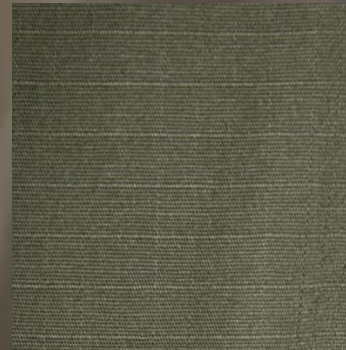
Canvas



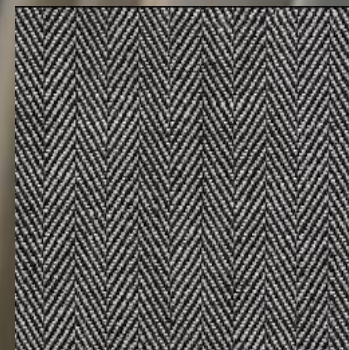
Twill



Broken Twill



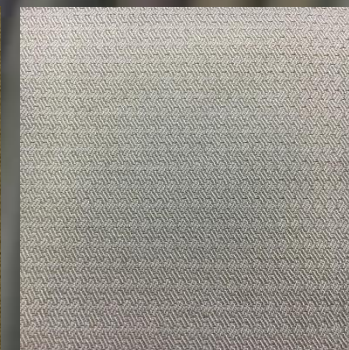
Rip Stop



Herring Bone



Sateen



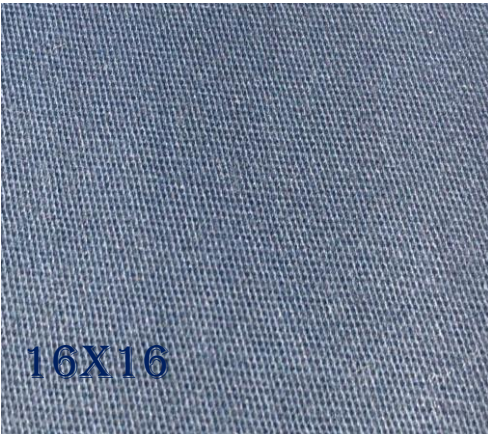
Dobby

Regular Fabric List

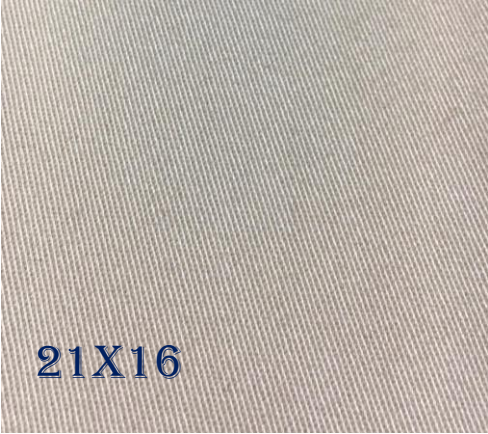
Fashion Wear					
Item	Composition	Yarn Counts	Weave	GSM +/-5%	Finish Width
DON	100% Cotton	30x30	1/1 Plain	115	57/58"
Alan	100% Cotton	40x40	1/1 Plain	130	57/58"
Domestik	100% Cotton	20x20	1/1 Plain	150	63/64"
Sledin TB21	100% Cotton	16x16	1/1 Plain	180	59/60"
Saten	100% Cotton	40x40	4/1 Satin	130	57/58"
Gabirela	100% Cotton	30x30	2/1 S Twill	170	57/58"
Badur	100% Cotton	20x20	3/1 S Twill	205	57/58"
Biern	100% Cotton	16x14	2/2 S Twill	235	59/60"
Biern	100% Cotton	16x14	2/2 S Twill	235	33/34"
Tora	100% Cotton	16x12	3/1 S Twill	245	57/58"
Barena	98% Cotton 2% Spandex	30x24+70D	2/1 S Twill	185	59/60"
Kolin	98% Cotton 2% Spandex	21x16+70D	3/1 S Twill	235	57/58"
Juno	98% Cotton 2% Spandex	21x16+70D	3/1 S Twill	245	58/59"
Vanesa š	100% Linen		1/1 Plain	150	57/58"
Workwear/Nyco Fabrics					
Domestik CVC	60%Cotton 40%Polyester	20x20	1/1 Plain	150	57/58"
Toronto	50% Polyser 50% Tencel	30x20	2/1 S Twill	185	59/60"
Tilla TB200	52% Polyester 48% Cotton	24x24	1/1 Plain	150	57/58"
Tibor TB202	52% Polyester 48% Cotton	24x16	1/1 Plain	175	59/60"
Tibor twill	52% Polyester 48% Cotton	24x16	1/1 Plain	175	59/60"
Bond	52% Polyester 48% Cotton	20x20	Ripstop	185	59/60"
Dena	65% Polyester 35% Cotton	45x45	1/1 Plain	105	57/58"
Galla	65% Polyester 35% Cotton	20x20	2/1 S Twill	190	57/58"
Glasgow	65% Polyester 35% Cotton	14x14	2/1 S Twill	240	57/58"
Patton	50%Polyamide 50% Ctn	20x20	Ripstop	225	59/60"
Sigma	50% Polyester 50% Cotton	24/2 x 24/2	Twill	235	59/60"
Rambo	100% Polyester	150 D x 300D	Ripstop	240	57/58"



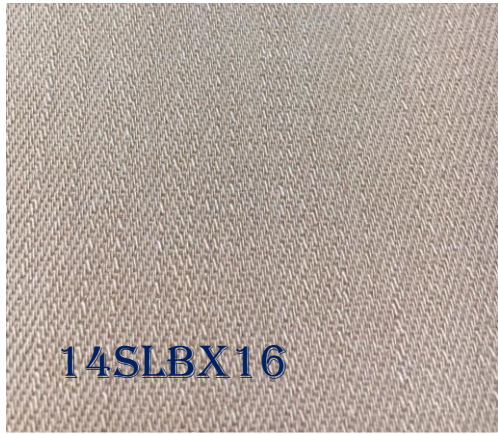
Product ID:	Houston
Composition:	98%Cotton 2%Spandex
Weave:	2/1 S Twill
B/W Weight:	195 +/-5% GSM
Finish:	Flat



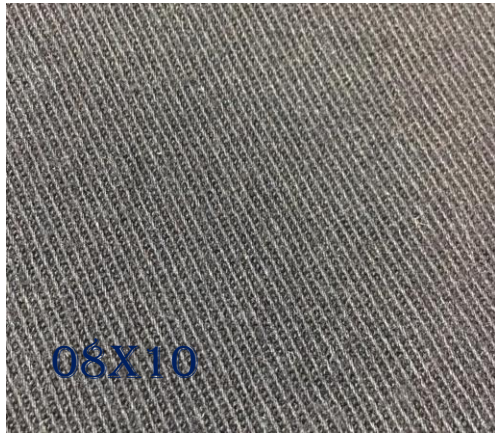
Product ID:	Madison
Composition:	98% Cotton 2% Spandex
Weave:	2/1 S Twill
B/W Weight:	235 +/-5% GSM
Finish:	Peach



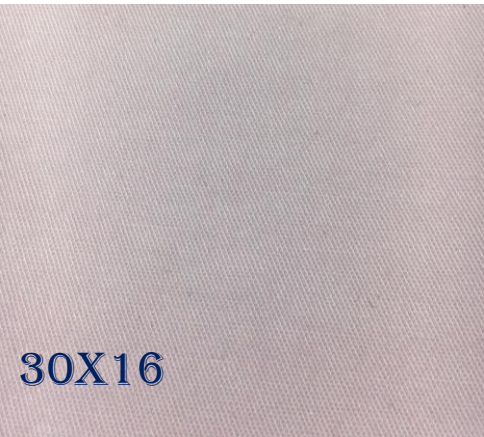
Product ID:	Dallas
Composition:	98%Cotton 2%Spandex
Weave:	3/1 S Twill
B/W Weight:	260 +/-5% GSM
Finish:	Peach



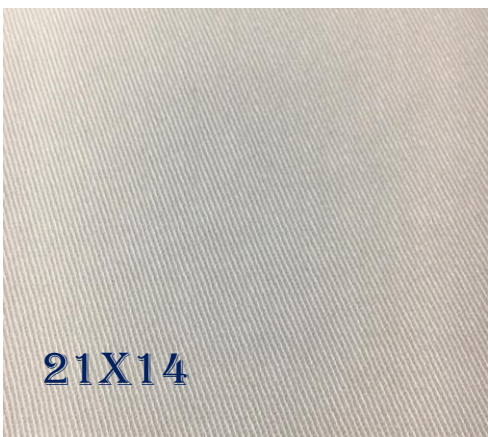
Product ID:	Chandler
Composition:	98% Cotton 2% Spandex
Weave:	3/1 Z Slub Twill
B/W Weight:	300 +/-5% GSM
Finish:	Peach



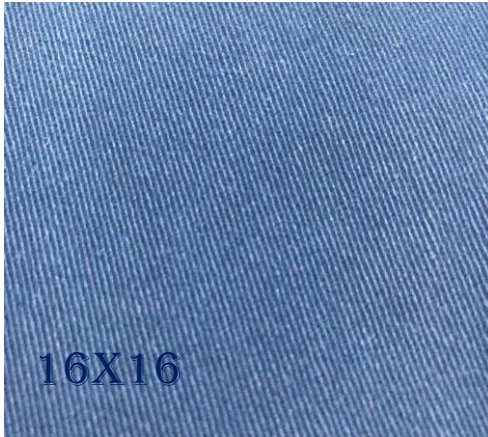
Product ID:	Modesto
Composition:	98% Cotton 2%Spandex
Weave:	3/1 S Twill
B/W Weight:	345 +/-5% GSM
Finish:	Peach



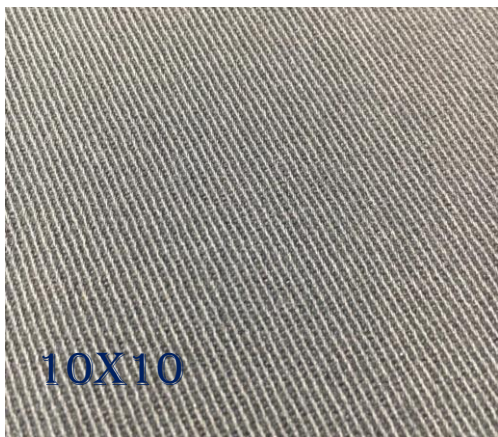
Product ID:	Norfolk
Composition:	98%Cotton 2%Spandex
Weave:	2/1 S Twill
B/W Weight:	210 +/-5% GSM
Finish:	Peach



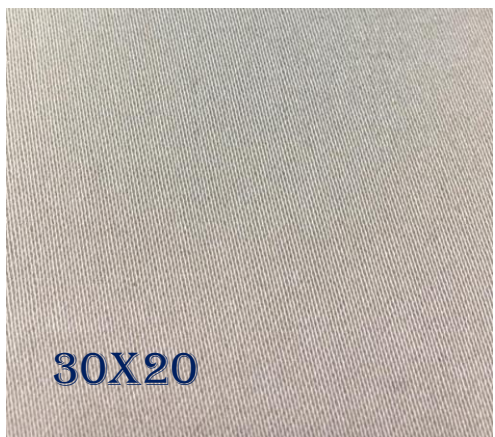
Product ID:	Reno
Composition:	98%Cotton 2%Spandex
Weave:	3/1 S Twill
B/W Weight:	260 +/-5% GSM
Finish:	Peach



Product ID:	Detroit
Composition:	98%Cotton 2% Spandex
Weave:	3/1 S Twill
B/W Weight:	300 +/-5% GSM
Finish:	Peach

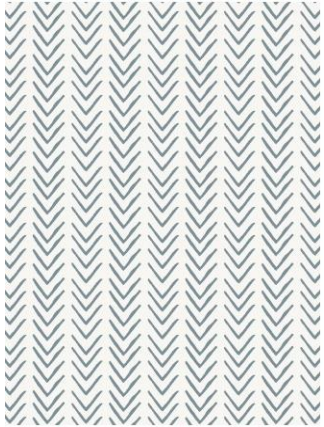


Product ID:	Des Moines
Composition:	98%Cotton 2%Spandex
Weave:	3/1 S Twill
B/W Weight:	305 +/-5% GSM
Finish:	Peach



Product ID:	Petersburg
Composition:	98% Cotton 2%Spandex
Weave:	4/1 Satin
B/W Weight:	260 +/-5% GSM
Finish:	Peach

Digital Printed Fabrics



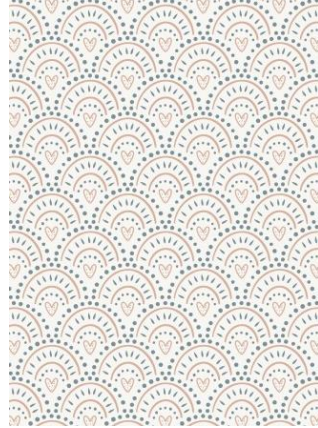
1000327-121



1000325-121



1000329-121



1000328-122



1000266-121



1000342-121



1000314-121



1000291-121



1000305-121



1000302-121



1000171-121



1000223-201



1000242-202



1000234-121

Fabric Details:

Article: DON, 100% Cotton, 1/1 Plain, Width: 140 cm, GSM: 115 +/-5%, Yarn Count: 30x30

https://www.cnm.cz/index.php?option=com_virtuemart&view=category&virtuemart_category_id=55&lang=en



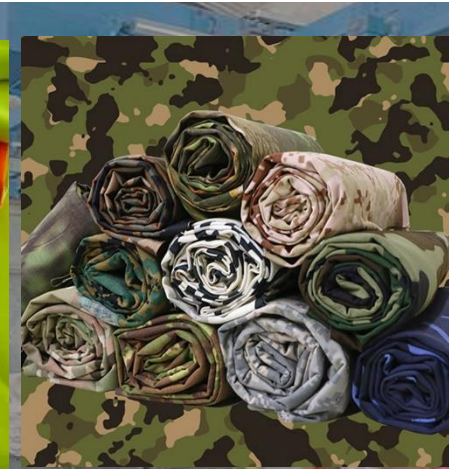
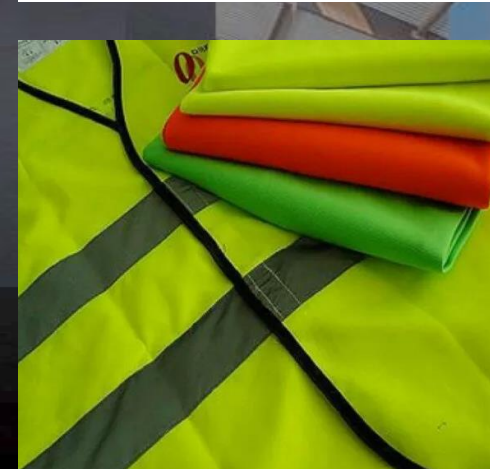
Work Wear

→ Industrial Finishes
→ High Visibility
→ Multi Blended

→ INDUSTRIAL FINISHES

1. Antistatic
3. Wrinkle Free
5. Water & Oil Repellent
7. Chemical Protection

2. Soil Release
4. Antimicrobial
6. Antibacterial
8. Fire Retardant



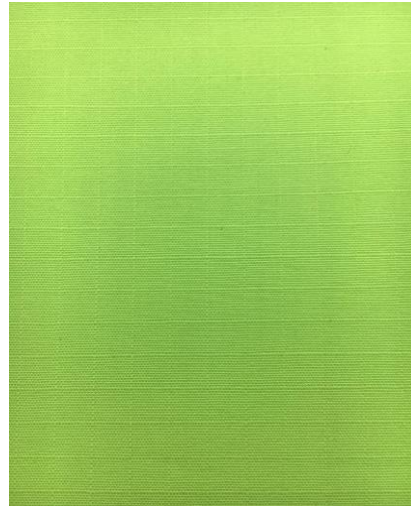
Dyed Fabrics



Orange High Vis



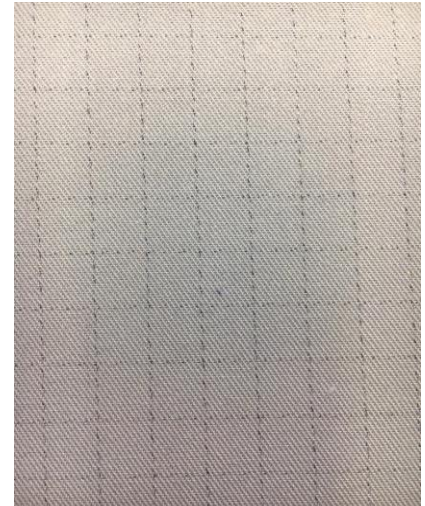
Red High Vis



Yellow High Vis



Cordura



Nega-Stat

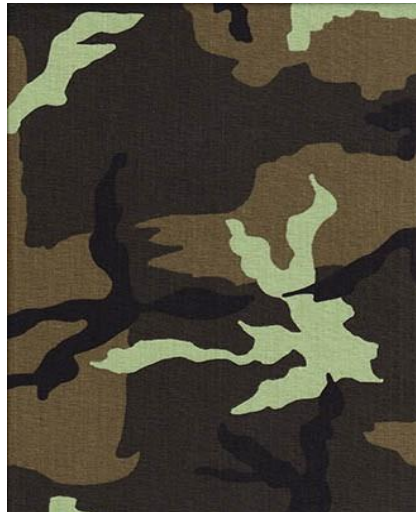
Camouflage Printed Fabrics



9389-42



9360-51



9279-42



9192-21



9191-41

1
million
meter of
stock

10
million meter
of annual
production
in EU

exporting
to more than
10 EU
Countries

LOGISTICS

CONTACTS ADDRESS:

CNM textil a.s. Baška 425 739 01
Baška Czech republic.

PRODUCTION:

CNM textil a.s. Úpravna textilu 788 01 Oskava
okr. Šumperk

Phone:

Czech & Slovak Market: ++420 555 559 806-7
Export Department: ++420 555 559 802-3

cnm@cnm.cz
www.cnm.cz

OEKO-TEX®
CONFIDENCE IN TEXTILES
STANDARD 100



2011PK0180AITEK

Tested for harmful substances.
www.oeko-tex.com/standard100



AAA®

Highest creditworthiness

