

A series of colorful diagonal bars in orange, green, yellow, purple, and pink, arranged in a scattered pattern on the left side of the page.

Your improvement,
our challenge

EAS

English

Barcelona · Brazil · Peru



Your improvement,
our challenge

“We find **innovation** by **listening** to our customers. **It's the most important** for us.

”

Agustí Escarré - CEO

EAS

Software

We have developed a system that streamlines and enhances the entire textile manufacturing process, with the aim of optimizing operations and increasing your company's productivity.

Our modular ERP software adapts to the specific needs of each type of company, ensuring a seamless integration with production processes. The standout feature is that our software is unique in the market, as it connects directly to the machinery park, providing total and real-time control over production equipment.

EAS

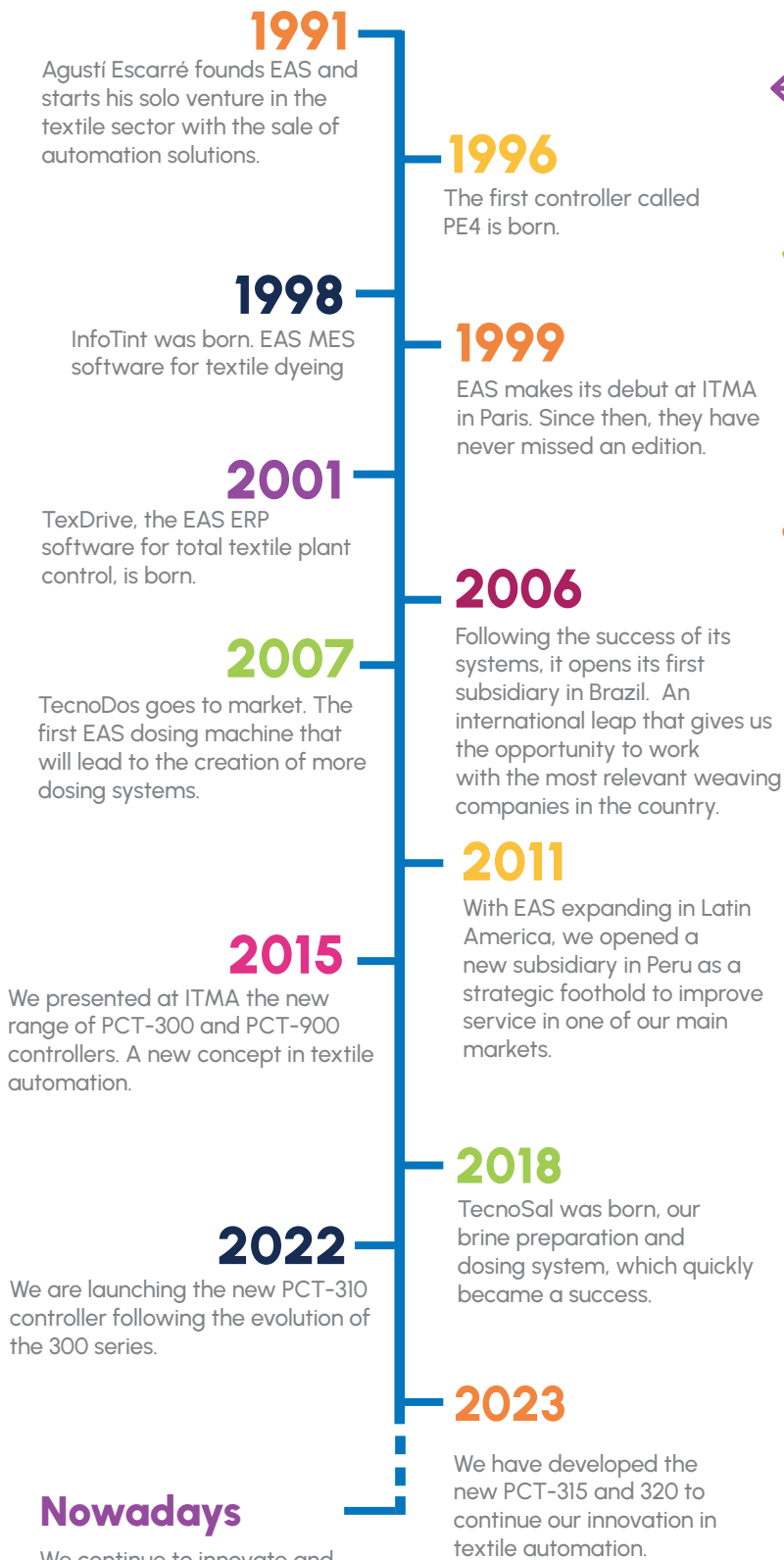
Automation

We provide the most advanced systems for textile machinery automation, achieving precise control at every stage of the fabric manufacturing process.

Our dosing systems are specially designed to automate the distribution and preparation of chemicals, dyes, and salt. This ensures efficient and consistent production, maintaining high-quality standards.

In addition to our expertise in automation, we also offer spare parts and accessories for textile machinery from leading manufacturers.

Revolutionizing TEXTILE PRODUCTION through technology for over 30 years



-  We simplify connection management between the different sections of the company, making possible the communication of our own software systems with textile machinery plant.
-  We are committed to implementing a streamlined manufacturing process that aids in decision-making, relying on real-time automatic data centralization within a robust management software. We achieve more sustainable and profitable processes.
-  Our business divisions are interconnected with one another, fostering the development of technological tools that continue to support the digitization of the textile industry.



Supporting #GreenManufacturing



Sustainability has emerged as a critical concern in the textile industry as we strive to align with the United Nations Sustainable Development Goals for 2030.

At EAS, we actively contribute to sustainable production by employing Key Performance Indicators (KPIs) that enable us to capture and evaluate all the necessary parameters for achieving efficient manufacturing processes.

We furnish our customers with valuable statistics, such as RFT (Right First Time) to minimize fabric reprocessing and OEE (Overall Equipment Effectiveness) to assess production efficiency and optimize performance for each batch.

These tools provide a clear roadmap for the development of environmentally responsible and resource-efficient production methods.

EAS

Software



TexDrive



InfoTint



TexMant



TexOffer



TexLab



Do you need to **optimize**
your operations and **increase**
your productivity?

Do it with **TexDrive!**



TexLab: R&D development and laboratory control module.



TexPes: Weighing control module for chemical dyes.



InfoTint: MES system for the management of weaving, dyeing, printing and finishing processes.



TexMonitor: Control the entire machine park from a single screen.

TexDrive

The **TEXTILE ERP** that **integrates** with the **machinery park**

Streamline and integrate every sector of your plant with our dedicated ERP solution designed for the textile industry.

TexDrive is an ERP software specially designed for the textile industry. This program integrates with the machinery park and offers various tools to efficiently manage all manufacturing processes.

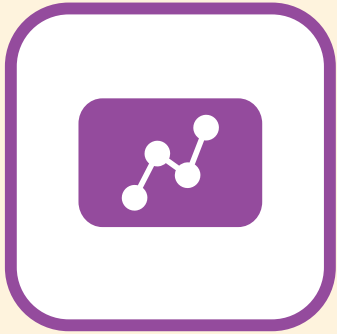
With TexDrive, you can oversee the reception of raw materials, product dispatch, cost control, and production planning, among other key functions. Its modular system allows you to add additional modules designed to make the most of your textile plant's potential.

Furthermore, TexDrive includes all essential ERP functions, such as the generation and management of administrative documents, labels, lists, and more. With this comprehensive solution, you can optimize the management of your textile company effectively and seamlessly.

TexDrive allows to obtain traceability and centralize all the information of the textile plant in the same software.



TexMant: Module for the control and planning of textile plant maintenance.



Atlantis: Software for textile machine control.

Communication and management drivers



TexDosif:
Dosing driver.



TexHost:
Communication driver.



TexUser:
User access driver.



TexCom
Machine communication driver.

TexDrive Special!

TexOffer



A TexDrive module offers advanced functionalities for tracking costs and results of the production process. It integrates seamlessly with your existing ERP and MES system, providing detailed insight at both the micro and macro levels.

You will be able to make better financial decisions thanks to real-time information on the performance of the production process. You will gain a complete understanding of costs and results, optimizing your business strategy for greater profitability.

- Manage costs efficiently and compare down to the smallest detail.
- Get the selling price quickly for each customer with the right profit margin.
- Send personalized quotes to customers in just one click and attach the documents you need.



Why TexDrive?



Reception control of customer orders and raw materials.



Tailor-made planning with detailed cost control follow-up.



Scheduling of production orders through intelligent routing.



Production organization with a single click, thanks to the visual planner.



Management of reports, lists, labels from the same customized environment for each client.

InfoTint

MES software for textile process management

InfoTint ensures the comprehensive traceability of the production process by seamlessly integrating with ERP systems and automating weaving, dyeing, printing, and finishing machines.

This software streamlines tasks and expedites the implementation of new improvements by applying customized rules for each type of machine.

With a simple click, InfoTint transfers all the recipe information to the production machine. Additionally, it facilitates the visualization of production graphics, RGB color, and product engineering in the printed recipe, ensuring detailed tracking at each phase of the process.

Ready for ERP connectivity

InfoTint is designed to establish bidirectional communication with TexDrive and third-party ERPs. It enables taking control of all production parameters to generate OEE, RFT reports, and obtain statistics. These reports facilitate decision-making based on real production data.

Control scales with TexPes weighing module



TexPes serves as the control module for colorant and auxiliary weighing. It connects to most scales with an RS-232 connection, allowing for a customized configuration of the weighing system.



Why InfoTint?



Standardizes all weaving, dyeing and finishing processes.



Efficiently manage the sending of recipes to the machines with detailed information.



Plans the production and controls the stock of chemicals and dyestuffs.

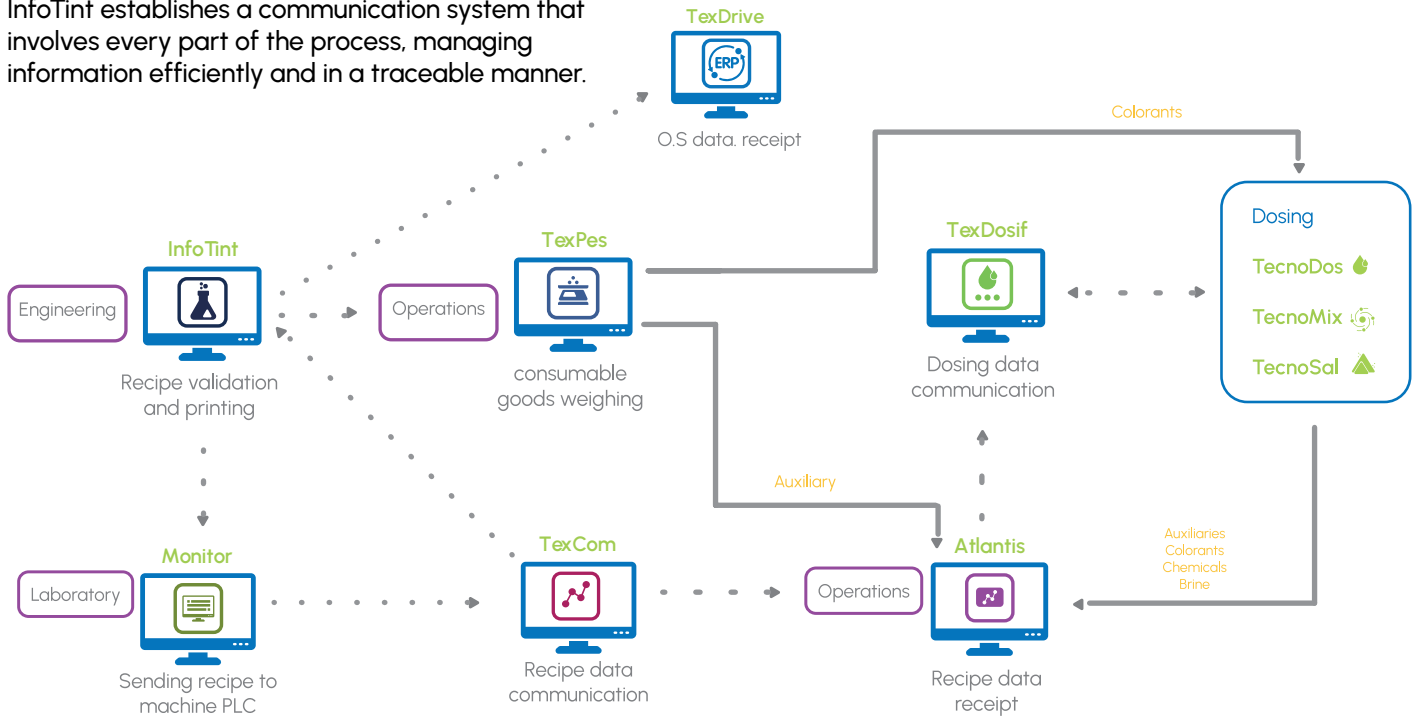


Create customized reports and statistics to get the most out of your production processes.

InfoTint centralizes the management and standardization of processes and recipes, implementing an agile production system that communicates with the machine park.

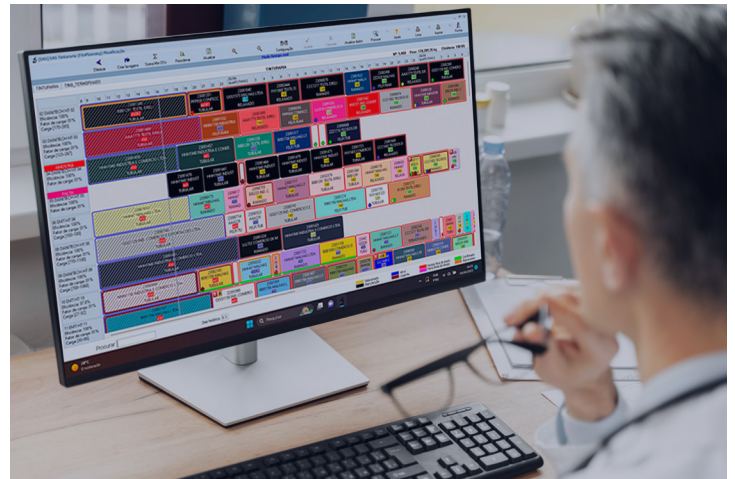
Work is now flowing smoothly

InfoTint establishes a communication system that involves every part of the process, managing information efficiently and in a traceable manner.



Visual production planning

With our integrated visual scheduler, you'll have precise information on when each batch enters production and its scheduled release time. This empowers you to plan and optimize production effectively, minimizing downtimes and enhancing overall plant efficiency.



Centralization of recipes and formulas

With InfoTint, you can easily manage formulas and recipes for various dyeing and finishing processes without manual data entry. All recipes are stored in the same environment, featuring a user-friendly formula editor. You can perform automatic calculations that take into account any process variable, such as fiber type, product, or dye, among others.

InfoTint offers many functionalities, including:

- Custom recipe creation.
- Master recipe creation.
- Recipe cost calculation.
- Mass changes to components.
- Various chemical and dye management types.
- Product stock management.
- Consumption forecasting, among others

Take the leap into the Smart Recipe!

This module enables you to create a comprehensive recipe using trichome data and batch properties. Additionally, it is customizable through rules, conditions, and exceptions designed to optimize the manufacturing process and ensure that each batch meets requirements, regardless of who is planning production.



TexLab



Integration with a **quality** laboratory R&D

TexLab is the indispensable InfoTint module for seamlessly integrating and implementing recipes from the laboratory, quality control, and color development. It ensures that production aligns with laboratory specifications, thereby reducing errors and implementation costs..



This module facilitates the automatic execution of the recipe created in the laboratory. TexLab also manages production orders based on their priority, considering demand or importance, and provides a real-time overview of their status.

TexLab uses automatic calculation technology, including "smart recipe" based on trichology, article, and other variables to calculate the entire recipe. This process reduces human errors and accelerates implementation.

Furthermore, the module facilitates the transfer of information between different laboratory instruments, such as pipettors and spectrophotometers.



Why TexLab?



Order control by priority and status.



Fast implementation of the laboratory recipe in production.



Automatic registration of color and intensity.



Integration with the TexOffer module for cost and price control.



Integration with third-party devices.



Now, it also includes **cost control**

TexLab integrates with the **TexOffer** module, allowing users to manage the costs associated with product development and production implementation. With this module, the calculation of prices and budgets becomes significantly faster.

This comprehensive solution streamlines processes, maximizing benefits.

TexMant



Maintenance management for machinery park

TexMant is the most comprehensive maintenance management module in the textile industry. It's specialized software that seamlessly integrates with MES and ERP systems to efficiently organize maintenance for your machine fleet.

With TexMant, you can classify maintenance requests according to their priority, facilitating the management and scheduling of tasks. Its monitoring capability ensures that all tasks are completed within the established timeframe.

A notable feature of TexMant is the creation of work order histories, allowing for constant tracking of task efficiency.



Keeping spare parts inventory in check

TexMant facilitates the detailed tracking of parts and essential materials for preventive, corrective, or predictive maintenance.

Moreover, with this module, you can obtain a thorough assessment of all maintenance tasks, enabling you to efficiently plan operations in the plant. Problem indicators and rework statistics contribute to optimizing your maintenance processes, saving both time and resources.



By using TexMant, you will achieve comprehensive maintenance planning in the plant, enabling you to make informed decisions and schedule tasks effectively.

Furthermore, with its reports on incidents and rework, you can optimize all processes and understand the costs associated with each repair.



Why TexMant?



Maintenance requests from Atlantis controllers.



Execution and monitoring of work orders by priority.



Creation of work histories and parts inventory control.



Recording of preventive maintenance tasks and periodic quality controls.



Detailed statistics and reports on maintenance work that allow you to review the cost of each machine.



It integrates with the machine fleet by indicating faults on line, and reorders production delivery times according to the machine repair time.

A world of **textile plant** **automation solutions**



EAS

Automation

Atlantis series PCT-310, 315 y 320

Atlantis controllers are efficient in industrial environments, featuring Windows 10 IoT to enhance productivity and ensure compatibility and security. They include Ethernet and WiFi ports for easy connection to networks, facilitating reliable remote monitoring and control.

Their 64 GB SSD ensures quick access to critical data, improving loading times. With 4 GB of RAM, it delivers smooth performance in demanding industrial environments, allowing the execution of multiple tasks and applications without compromising speed or stability.



Atlantis incorporates a UPS (Uninterruptible Power Supply) system to ensure uninterrupted operations during power outages. Our range of controllers allows adjusting the size of the widescreen HD display in a 16:9 format with customized synoptics according to needs. This combination of technologies ensures a seamless experience tailored to each requirement, reinforcing efficiency and flexibility in any operational environment.

PCT-310, featuring a 10-inch screen, provides a comprehensive solution to enhance industrial processes. In the case of the **PCT-315**, which boasts a 15-inch screen, it stands out as the ideal choice for large-scale dyeing machines. Meanwhile, the **PCT-320**, equipped with a 20-inch screen, is specifically designed to meet the requirements of large frameworks that demand high-visibility synoptics.

PCT-300 Stand Alone

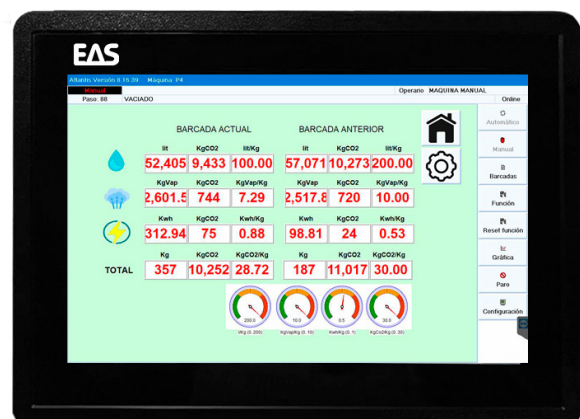
Optimize your weaving, printing, and finishing processes with our advanced controller. Easily monitor the product's technical sheet, eliminating cumbersome paperwork and allowing you to focus on efficiency. This controller excels in certifications, being versatile in its installation on various supports, adapting to the needs of your industry.

With the Windows 10 IoT operating system, it takes efficiency to another level. Its Ethernet and WiFi ports ensure fast and stable connectivity, making it a robust platform. The 32 GB hard drive and 2 GB of RAM ensure smooth performance in industrial environments. It's a practical and strategic solution for daily challenges and excellence in process management and certifications in the textile industry. This controller, with advanced features and a robust design, is essential for modernizing and improving the efficiency of your production plant.



All consumption data at a glance

The Atlantis controllers feature a consumption screen that allows you to track in real-time the liters of water, kilograms of steam, and kilowatt-hours, among other parameters, for the current batch and compare it with the previous one. A valuable tool that enables monitoring of the resources consumed by the machines, ensuring that your processes are more efficient and sustainable.



Atlantis

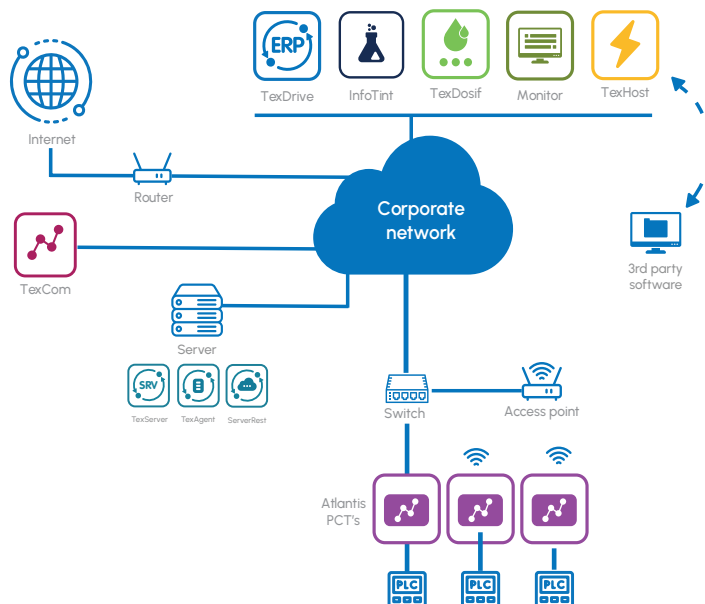
Innovation in textile machinery automation

Atlantis controllers stand out for their exceptional performance in textile machines. Thanks to their compact design, they seamlessly integrate into any machine.

These controllers communicate and execute dyeing cycles in the machine park, capturing all production parameters. One of their main advantages lies in their ability to handle up to 12 background functions, optimizing efficiency for different types of fabrics.

Moreover, they are compatible with most dyeing machines on the market, such as jets, autoclaves, and jiggers. The synoptics and functions are fully customizable to meet the specific needs of each customer, allowing easy integration with MES software, such as InfoTint, or other third-party systems.

Cutting-edge technology to enhance efficiency in textile manufacturing processes.



Why Atlantis?



Plug & Play system quick to install.



Real-time consumption efficiency display.



Executes processes and obtains real-time production data.



Easy integration with InfoTint for longer data availability.

Get to know the models

Technical specifications	PCT - 310/315/320	PCT- 300 Stand Alone
Screen size	10'2" - 15'9" - 21'5"	8"
Touchscreen	Si	
Color screen	Si	
OS	Windows 10 IoT	
PLC communication	Ethernet	
HD	SSD 64Gb	32 Gb
RAM	4 Gb	2 Gb
USB ports	2	2
Serial ports	Opcional	1
Ethernet	2	1
Wi-Fi	Si	
Built-in UPS	Si	
Installation	Panel	Soporte
Consumption	1 A	0.6 A

New!

PDA-100



Manage your warehouse stock efficiently and easily. By simply scanning the barcode of the items, you will be able to control inbound and outbound inventory in real-time. When connected to TexDrive, you will always have instant access to updated information.



Accurate dosing system for dyeing and finishing machines



TecnoDos is the chemical dosing system for dyeing machines, including jets, jiggers, industrial autoclaves, preparation, and finishing machines.

It dispenses chemicals and auxiliary products using a tri-lobe pump that feeds into a flow meter, precisely measuring the amount of product needed according to the recipe.

A single-pipe system is employed to connect various tanks in the dyeing and finishing machines. After dosing, it automatically initiates a cleaning cycle in preparation for the next dosage.

TecnoDos accommodates a wide variety of chemicals due to its high-quality manifold.

A modular system for every type of production

Modules for Dyeing

Microdosing

Dosing from 10c.c. to 200c.c. (+/- 2c.c.) through a peristaltic pump managed by the TecnoDos controller.

Mono product

A perfect solution for products that cannot be mixed or dosed together. It also enables machine dosing of products with higher consumption, such as sulfur black.

Modules for finishing

Compound system

Designed for processes with few frequently repeated recipes, it enables you to link a continuously available recipe in preparation.

Batch system

It calculates the precise quantity of all recipe ingredients based on the process parameters. It can be combined with various control accessories, such as an exclusive flush line, safety valves, and level sensors, among others.



Why TecnoDos?



Accuracy in dosing and shipping of products.



Elimination of waste by shipping precise quantities.



Labor and ergonomics optimization.



Real-time product inventory control.



Ease of cost control, saving on reprocessing.



Open communication system

PadBatch 4:1

Automates dosing in foulaires

TecnoDos enables the automation of the Pad-Batch system to precisely control 4:1 dosages in fabric treatments. With this automation, you can efficiently oversee dye preparation, regulate tank levels, and adjust the foulard's speed to achieve accurate article pick-up.



TecnoFill

The efficient solution for storing chemical products

Utilizing its loading lance and valve manifold, TecnoDos transports chemicals and liquid auxiliaries to various storage tanks.

TecnoFill employs an analog level system to monitor the real-time status of each tank, allowing for precise control of product stock.

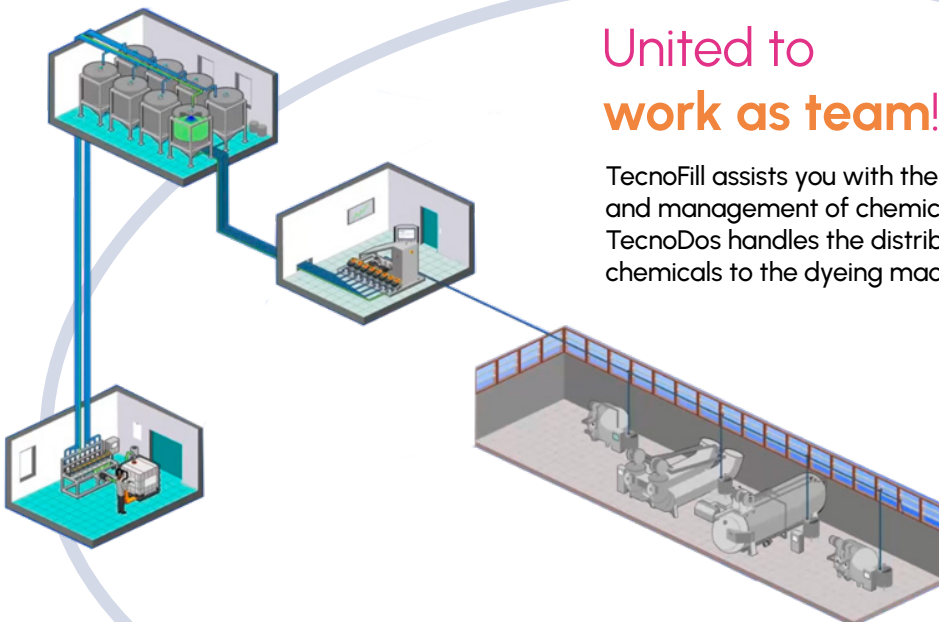
After product loading, TecnoFill automatically cleans its loading lance, making it ready for the loading of new products.

Thanks to this system, inventory management and raw material supply become more streamlined, optimizing control over the materials commonly used in dyeing and finishing processes.



United to work as team!

TecnoFill assists you with the loading and management of chemicals, while TecnoDos handles the distribution of chemicals to the dyeing machines.





Dye preparation system for dyeing machines

TecnoMix is the color kitchen designed for the preparation and delivery of dye materials to industrial dyeing machines such as jets, jiggers, and industrial autoclaves.

EAS's color kitchen can be configured according to your needs. It consists of one or several preparation tanks made of 316L stainless steel, with a mirror-finished interior that facilitates quick and efficient cleaning. Each tank has a lid equipped with an automatic opening system that indicates which tank should be used. A powerful agitator ensures precise and specific mixing for each type of dye solution. A pressure sensor controls the amount of water needed according to the recipe. In addition, TecnoMix adjusts the tank filling temperature according to the dye.

TecnoMix offers a work order confirmation system using barcode scanning, allowing direct scanning of printed work orders without the need to enter data manually.

Once the dissolution is complete, TecnoMix uses a pump and flow meter module to send the preparation to the dyeing machine through a single-tube system. Subsequently, it performs a tank and line wash before starting the next preparation.

Optimize production time with TexPes weighing module

By implementing TexPes in the dyestuff warehouse, the preparation process of TecnoMix recipes is optimized.

A simple and efficient solution for handling and weighing dyestuffs in the dyeing process that prevents waste.



Why TecnoMix?



Configurable and expandable in the number of tanks.



Precise solutions following the recipe parameters,



Lid with a security system



Barcode validation system



Traceability of preparations

The use of water-soluble bags enables the weighing of dyes and their direct introduction into TecnoMix without producing residues or affecting the preparation.





Brine and powdered product preparation system

TecnoSal manufactures brine solutions and other powdered products in large quantities. It produces stable brine solutions that can be stored for weeks.



TecnoSal is a comprehensive system that simplifies the loading of big bag sacks through an integrated crane at the top. At the bottom, there is a hopper with a capacity of up to 200 liters and a transport system that conveys the salt to the dissolution tank. This process eliminates the manual handling of salt, improving ergonomics in the workplace.

Adjacent to the main structure is the control panel and a dissolution tank with a capacity of 1000 liters. The salt coming from the hopper is weighed using load cells incorporated into the tank.

Thanks to a powerful agitator, brine solutions maintain high quality and can be stored for weeks without the need for additional agitation, as no precipitation occurs.



Why TecnoSal?



Time savings in the preparation process.



Stable dissolution with the precise amount of salt, allowing long term storage.



Improvement in the quality of processes with brine.



Increased plant safety and operator ergonomics.



Dissolutions always ready for improved workflow

Once the brine level in the storage tank is depleted, TecnoSal automatically initiates the preparation of a new solution. This filling process ensures a continuous supply of brine for production processes, significantly reducing downtime and increasing efficiency in the workflow.

Valves, spare parts and accessories: find all you need

At EAS, we understand that every component matters. That's why we have assembled a comprehensive selection of carefully chosen consumables, spare parts, and accessories, so you can rest assured.

Within our catalog, you will discover a diverse array of valves, spare parts, and other products crucial for the seamless operation of your machinery.

Count on EAS to supply everything you require and elevate your project to the next level.



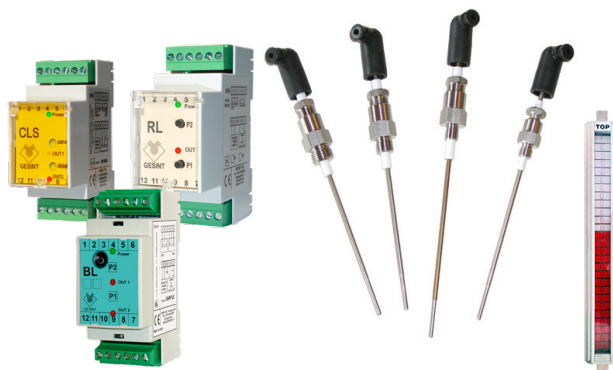
100% EAS quality guaranteed

Components for measurement and control

Flow measurement



Level measurement



Seam detection



Temperature measurement



Converters



Valving

..... Regulation



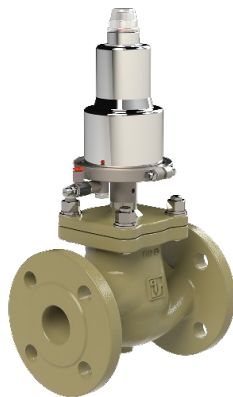
..... Sphere



..... Butterfly



..... On/Off 2&3 ways



Water-soluble bags

Water-soluble bags are a highly useful tools in the dyeing companies as they facilitate the dye weighing process and simplify system management. They are ideal for efficiently weighing and storing dyes to be used later in the preparation of future dyeings. Additionally, their use contributes to improving comfort at work, as they protect the operator from exposure to chemicals in the workplace. These bags dissolve easily in water without leaving residues or affecting the chemical composition.

We offer various sizes of bags, and we can also customize them according to the specific needs of each customer.

Sizes available in stock:

- 200x300 mm
- 300x400 mm
- 400x500 mm
- 500x600 mm



A world FULL OF CHALLENGES

01 The customer at the center of our developments

All of our products are designed to help customers achieve a balance between high-quality manufacturing and maximizing profitability, all while promoting sustainable production.

03 Constantly evolving

We remain committed to innovation in software, controllers and machinery to continue contributing to the future of textile industry.

02 Committed to sustainability

We are constantly developing solutions that support and advance the sustainable development of the textile industry, with a focus on placing people's well-being at the forefront. We are committed to the 2030 agenda.

04 Global commitment

We have an extensive network of representatives and a specialized technical team around the world to disseminate our solutions to every corner of the planet.



EAS

Barcelona

Head office

Carrer Hondures 48-52

08027 Barcelona

+34 934 083 809

EAS

Brasil

Rua Daniel Imhof, 12 (sala 2)

88351-160 Brusque, SC

+55 47 3355 5155

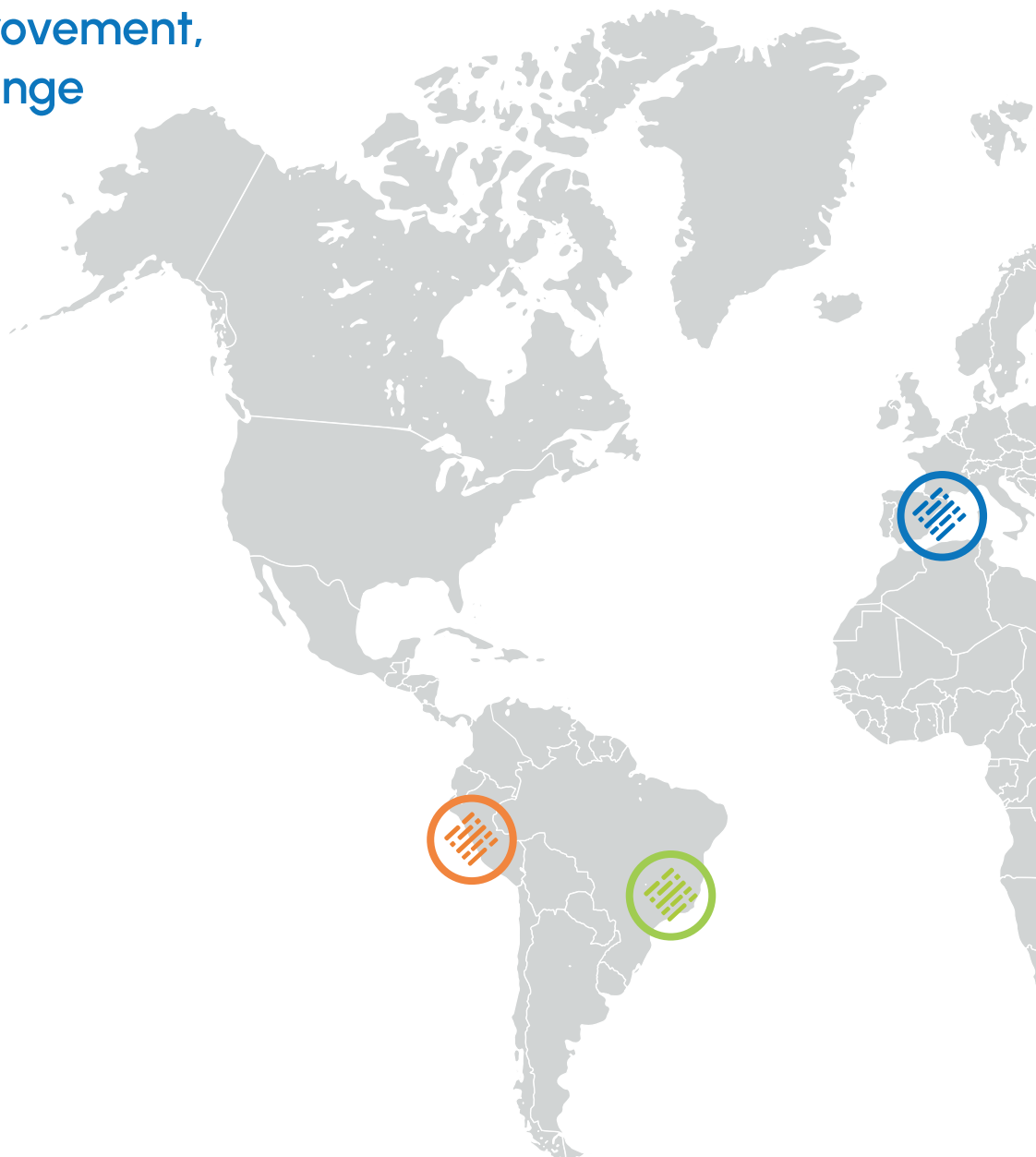
EAS

Perú

Av. Andrés Aramburu 878

15047 Surquillo - Lima

+511 5101329



EAS Support

A DEDICATED TEAM

to offer you the best service

At EAS, we have established a support team to provide you with the best service worldwide.

We understand the importance of having high-quality technical support available when you need it. Our remote service enables you to swiftly and efficiently resolve any technical issues. With just an internet connection, you can access remote assistance for all of our solutions.

Our team of technical experts stands ready to assist you in resolving any problems, addressing operational questions, or scheduling on-site assistance.



Contact support



support@escarre.com



+34 93408 38 09
+55 47 33555155



www.escarre.com





www.escarre.com

Barcelona

Carrer Hondures 48-52
08027 - Barcelona
+34 93 408 38 09

Brasil

Rua Daniel Imhof, 12 (sala 2)
88351 - 160 Brusque -SC
+55 47 3355 5155

Perú

Av. Andrés Aramburu 878
15047 Surquillo - Lima
+511 5101329