

The new standard in dyeing and finishing



Designed for the Smart Factory

The brand new Sedomat 8000 controller range is specially designed to meet the latest requirements of Industry 4.0 and more. It is developed to match future standards through its high flexibility. The controllers contain all the benefits of the well-proven Sedomat controllers combined with internal Wi-Fi, RFID, flexible field busses and a high number of modular internal and external inputs and outputs. Energy counters can be directly connected via the high number of standardized connections. The Sedomat 8000 series already includes a PLC which can be adapted with programming tools and can be optionally equipped with internal and external I/O boards to meet the different requirements of yarn, fabric and other types of dyeing and finishing machines.

Top-level, high-quality products

Solutions for dyeing and finishing automation need expert systems. The Sedomat 8000 series brings together the knowledge of more than 40 years machine automation in dyeing and finishing. It is tested for harsh environments and built according to the highest quality standards. The high performance hardware offers an impressive user experience.



Connectivity

In the Sedomat 8000 series, internal I/Os and - depending on the controller - internal SedoIO boards can be built in. External SedoIO modules can be connected via interfaces like CANopen®, PROFIBUS DP® and Modbus RTU (RS232). This way, the controllers can be customized to the requirements starting from simple lab machine to complex dyeing and finishing machines. SedoIO modules offer perfect flexible options to select the necessary I/O needs.

Ethernet TCP/IP network integration for SedoMaster and the communication with other dye house systems are available. OPC UA and MQTT interfaces allow an easy and open data exchange on machine level (M2M) and with supervisory systems.

Web-based

Web-based remote service and control can be guaranteed everywhere worldwide. OpenVPN enables a direct and secured connection to Sedomat controller for service intervention. In order to meet the highest quality standards, production must be monitorable in real-time. The SedoAPP is a powerful tool that allows real-time control from anywhere at any time.

Flexibility and look ahead

With flexible, parallel functions, there are no limits to productivity. With the Sedomat 8000 series, batches can be processed and a preview of the actual and the next batch can be displayed simultaneously.

Unlimited applications

Coupled machine operation, logging and visualization of process data, support of different languages, dosing curves, data logging via cloud services, integration with chemical dispensing and automation of dye kitchens, ...

Sedomat 8007

The compact Sedomat 8007 with a 7" touch display is specially designed for lab machines and data acquisition. It can be equipped with an internal I/O board or can be expanded with external SedoIO modules.

Sedomat 8010

The Sedomat 8010 can be equipped with internal I/O boards or expanded with two internal SedoIO boards. External SedoIO modules can be connected via bus connection. Having a 10.1" touch display, it offers an easy operation of the modern user interface.

Sedomat 8015

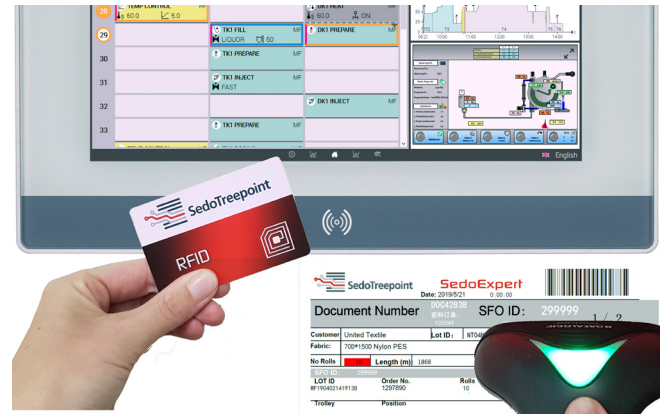
The Sedomat 8015 can be equipped with internal I/O boards or expanded with four internal SedoIO boards. External SedoIO modules can be connected via bus connection. The big 15.4" touch display offers a perfect operation and control of all types of machines.



Sedomat 8007 ▲



Sedomat 8010 ▲



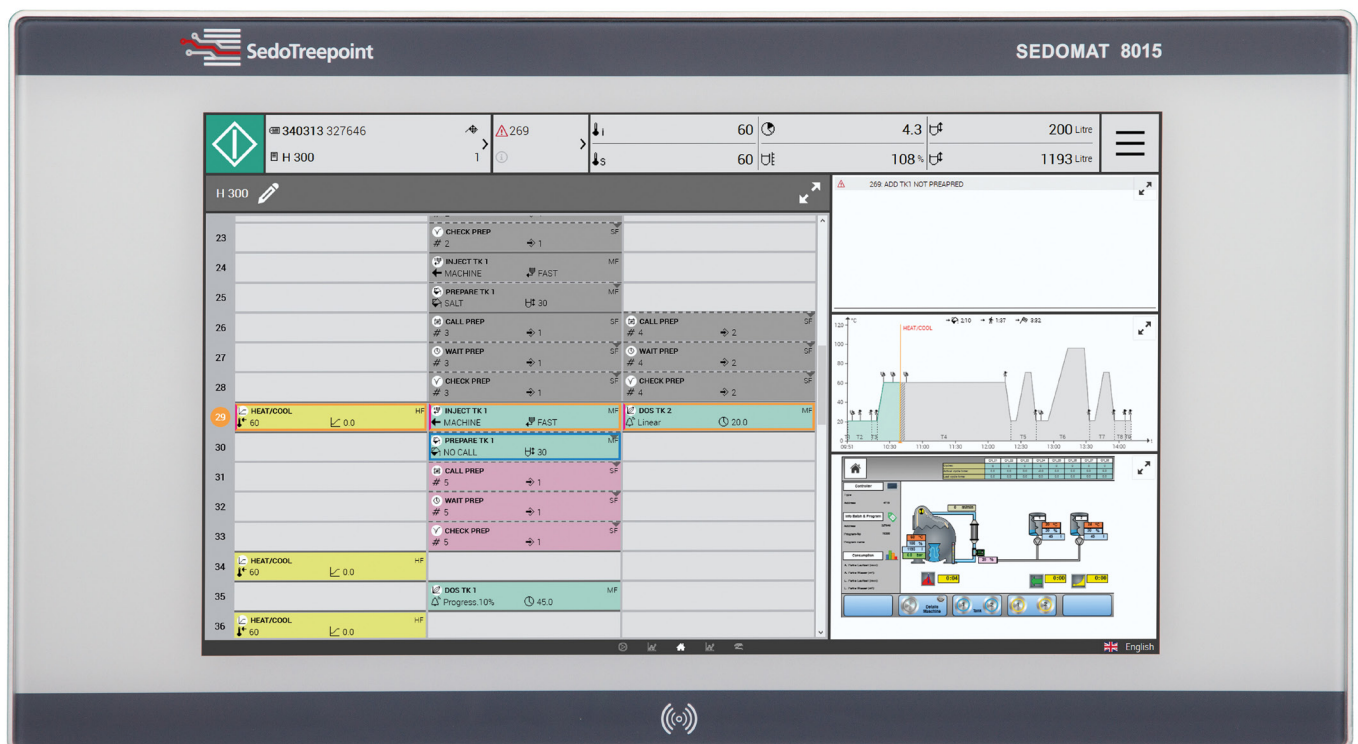
Data acquisition

The Sedomat 8000 series can be used for data acquisition or as a production client for SedoExpert. RFID support offers the perfect precondition.

SedolO options

- Internal SedoIO with up to four cards (analog, digital, relay)
- External SedoIO modules

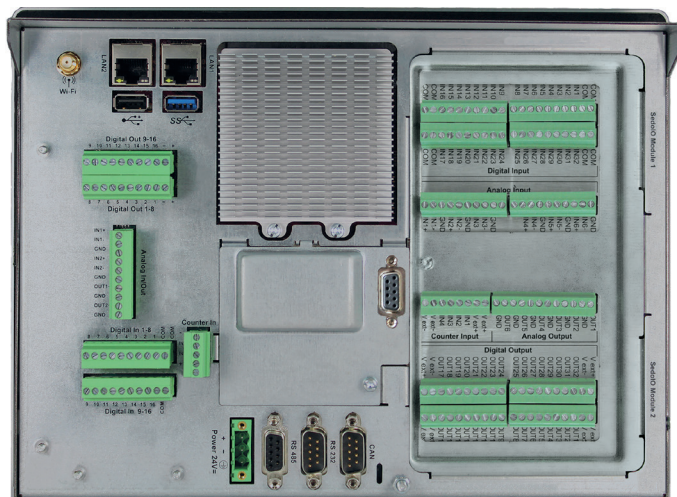
For more details, refer to the SedoIO brochure.



Specifications		Sedomat 8007	Sedomat 8010	Sedomat 8015
Capacitive touch display		7"	10.1"	15.4"
Bus systems**	CANopen®	✓	✓	✓
	PROFIBUS DP®*	✓	✓	✓
	Modbus RTU (RS232/485)*	✓	✓	✓
	Modbus TCP*	✓	✓	✓
Internal I/O boards	I/O board IO16/2*	1	1	1
	I/O board IO32/6*	-	1	2
SedoIO	Internal modules*	-	2	4
	External modules*	✓	✓	✓
Connectors	RS232 interface	✓	✓	✓
	RS485 interface	✓	✓	✓
Ethernet (RJ45), 1 GBit/s		2	2	2
USB 2.0 port / USB 3.1 port		1 / 1	1 / 1	1 / 1
Wi-Fi		✓	✓	✓
OpenVPN client		✓	✓	✓
OPC UA Server, MQTT Server		✓	✓	✓
RFID/NFC reader*		✓	✓	✓
mPCIe slot		✓	✓	✓
mSATA slot		✓	✓	✓
IP67 protection		✓	✓	✓
Power supply 24 V DC, 1.0 A		✓	✓	✓
Ambient temperature 0 - 60 °C (32 - 140 °F)		✓	✓	✓
Dimensions (wxhxd)		218 x 160 x 65 mm	285 x 216 x 65 mm	483 x 266 x 65 mm
Panel cut-out (wxh)		203 x 147 mm ± 1 mm	270 x 196 mm ± 1 mm	442 x 249 mm ± 1 mm

*Optional configuration, customized to individual needs.

**Further bus systems on request.



▲ Connections and interfaces Sedomat 8010

Head office:
Sedo Treepoint GmbH, Germany
 Neuwies 1, D-35794 Mengerskirchen
 Phone: + 49 6476 31-0
sedo@sedo-treepoint.com

Sedo Treepoint, Switzerland
switzerland@sedo-treepoint.com

Sedo Treepoint, Belgium
belgium@sedo-treepoint.com

Sedo Treepoint, China
china@sedo-treepoint.com

Sedo Treepoint, India
india@sedo-treepoint.com

Sedo Treepoint, Singapore
singapore@sedo-treepoint.com

Sedo Treepoint, USA
usa@sedo-treepoint.com

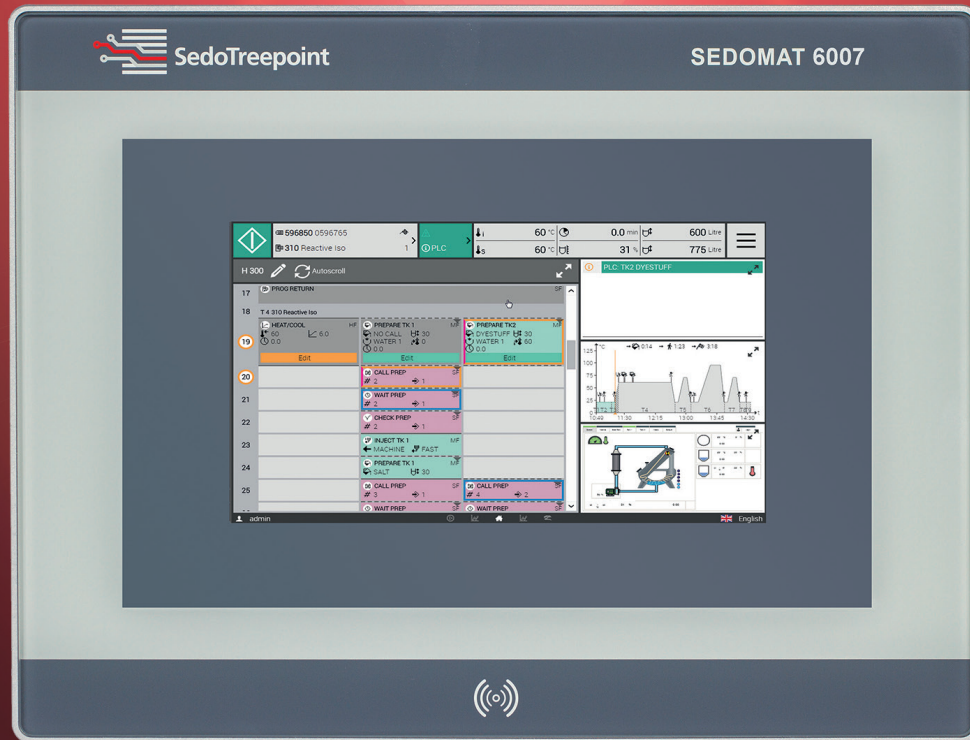
Technical specifications are subject to change without prior notice.



SedoTreepoint

Experts in process optimization

Cost-effective controller for a high degree automation



Designed for the Smart Factory

The Sedomat 6007 is a cost-effective solution for a high degree automation specially designed to meet the requirements of Industry 4.0. It comes with a user-friendly 7" touch display and is equipped with Modbus RTU (RS232). It already includes a PLC which can be adapted with programming tools and can be optionally equipped with internal and external I/O boards to meet the different requirements of yarn, fabric and other types of dyeing machines.

A more sustainable competitive production can be realized due to the integration of SedoMaster and other dye house systems via Ethernet, OPC UA and MQTT interfaces. Also, data acquisition or the use of Sedomat 6007 as production client is possible by optional RFID support.

Like all Sedo Treepoint controllers the Sedomat 6007 guarantees high quality and reliability in rugged production environments.

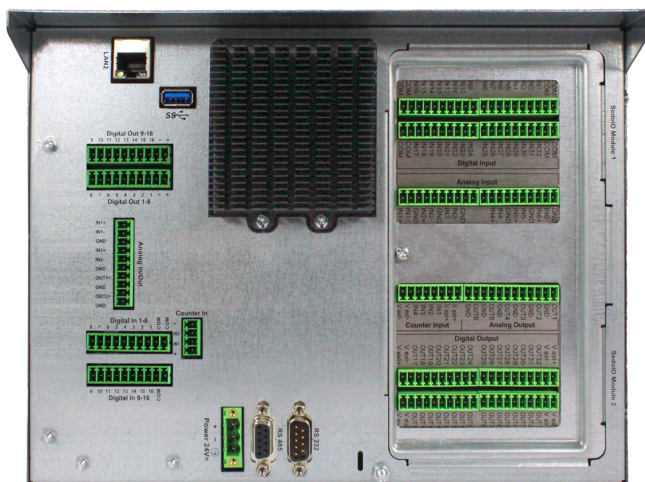


Internal I/O board options

- Embedded internal I/O board IO16/2 with 16 digital I/Os, 4 software counters (4 kHz), 2 hardware counters (10 kHz), 2 analog inputs, 2 analog outputs
- Internal I/O board 32/6 with 32 digital I/Os, 4 software counters (4 kHz), 4 hardware counters (10 kHz), 6 analog inputs, 6 analog outputs

Specifications		Sedomat 6007
Capacitive touch display		7"
Bus systems	CANopen®	-
	PROFIBUS DP®*	-
	Modbus RTU (RS232/485)*	✓
	Modbus TCP*	-
Internal I/O boards	I/O board IO16/2*	1
	I/O board IO32/6*	1
SedoIO	Internal modules*	2
	External modules*	1
Internal I/O boards	RS232 interface	✓
	RS485 interface	✓
Ethernet (RJ45), 1 GBit/s		1
USB 2.0 port / USB 3.1 port		1/-
Wi-Fi		-
OpenVPN Client		✓
OPC UA Server, MQTT Server		✓
RFID reader*		✓
mPCIe slot		-
mSATA slot		-
IP67 protection		✓
Power supply 24 V DC, 1.0 A		✓
Ambient temperature 0 - 60 °C (32 - 140 °F)		✓
Dimensions (wxhxd)		285 x 216 x 65 mm
Panel cut-out (wxh)		270 x 196 mm ± 1 mm

*Optional configuration, customized to individual needs.



▲ Connections and interfaces Sedomat 6007

Head office:
Sedo Treepoint GmbH, Germany
 Neuwies 1, D-35794 Mengerskirchen
 Phone: + 49 6476 31-0
sedo@sedo-treepoint.com

Sedo Treepoint, Switzerland
switzerland@sedo-treepoint.com

Sedo Treepoint, Belgium
belgium@sedo-treepoint.com

Sedo Treepoint, China
china@sedo-treepoint.com

Sedo Treepoint, India
india@sedo-treepoint.com

Sedo Treepoint, Singapore
singapore@sedo-treepoint.com

Sedo Treepoint, USA
usa@sedo-treepoint.com

Technical specifications are subject to change without prior notice.

