

Montex Glass Fibre Industries Pvt. Ltd.



Montex Glass Fibre Industries Pvt. Ltd.



Corporate Office :

705 , Bhaveshwar Arcade Annexe,
LBS Marg ,Opp Shreyas Cinema,
Ghatkopar (West) ,Mumbai,
Maharashtra,
India - 400086



Factory Office :

E-76,MIDC,
Ambad Industrial Area,
Nashik, Maharashtra,
India -422010



Overseas Office :

Technical textile Montex GmbH
Berliner Ring 25
64625, Bensheim,
Germany

- We are the **largest fibre glass fabric** producing company from **India**.
 - In **5 decades** of our lifespan as a fibre glass fabric manufacturing company, we cater to various industries including **HVAC, Electronic, Automotive, Electrical, Mica Insulations, and Constructions** providing best solutions for various **insulation needs**
 - Our customer base extends across the globe ranging from America, Europe, MENA, South African Countries to APAC
 - We have been consistently focusing on **sustainable development** with **strong R&D** practice to deliver solutions.
-

Customer Base



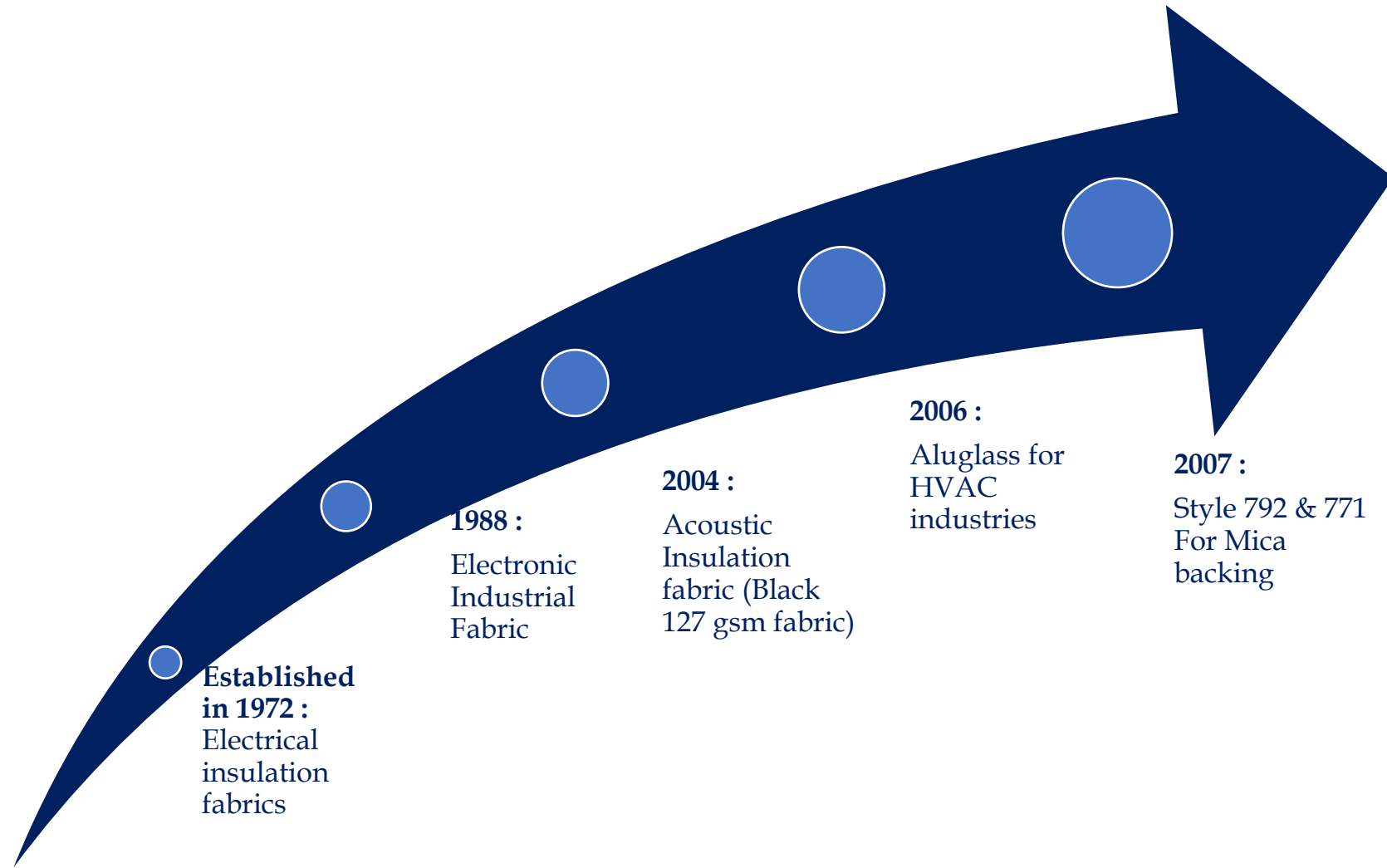
Factory



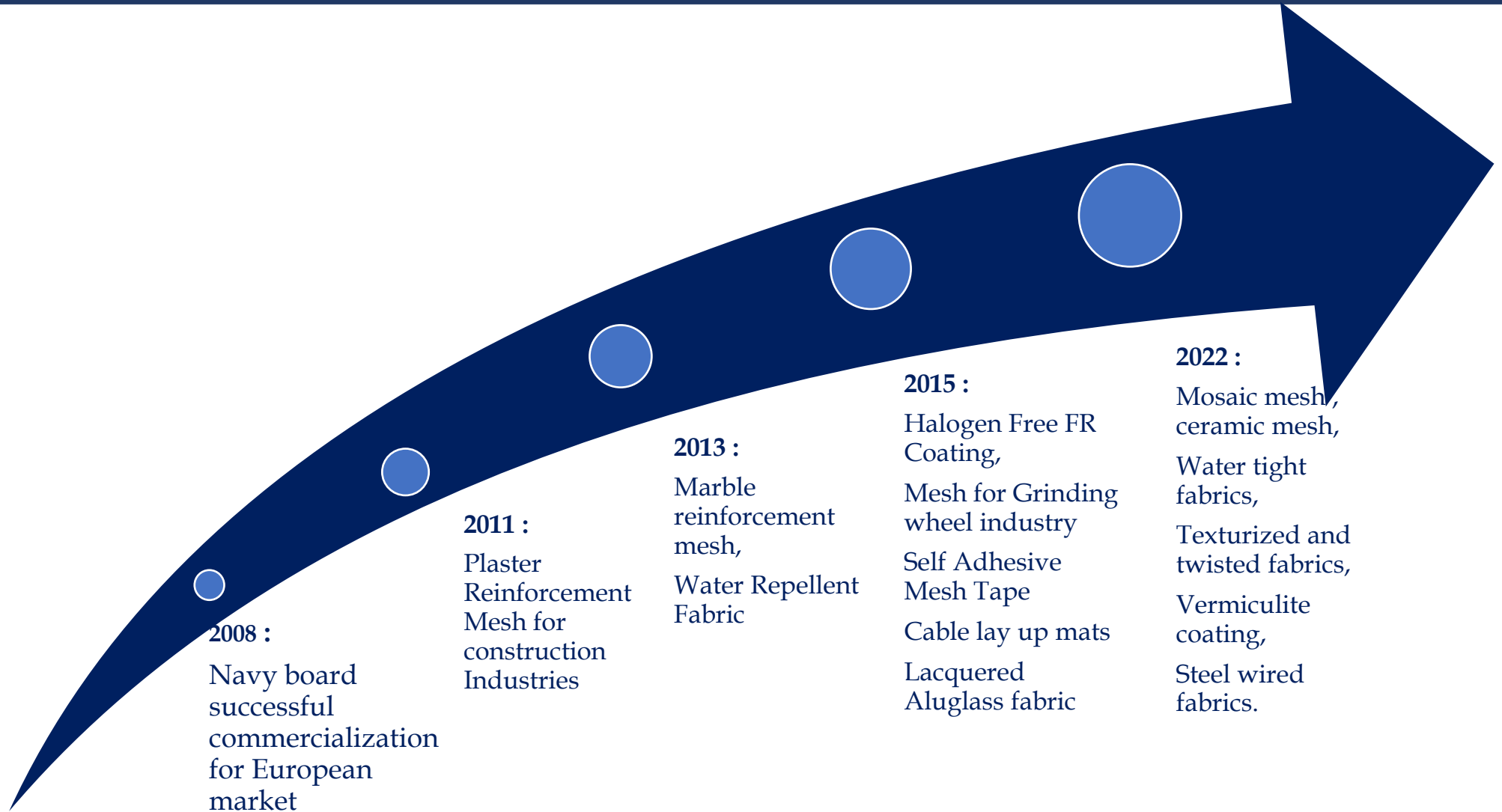
State-of-the-art fully air-conditioned factory with latest shuttle less looms (Rapier looms)

Factory Area	12,100 sq.m
Warehouse Area	2,700 sq.m
Number of Plants	07
Number of looms	234
Preparatory machines	09
Finishing machines	08
Employee + Workers	380 +

Brief history



Brief history



Production Capacity

1.5 million

Square meters / month

Mesh Production Capacity



1.4 million

Square meters / month

Fabric Production Capacity



Application



PRODUCT RANGE

GSM – 24 to 1200

Thickness – 0.03 to 1.20 mm

Width – 50 mm to 2100 mm

TYPES

1. Loomstate

2. Coated

- Acrylic
- Alkali Resistance
- Fire Resistance
- Water Repellent / Resistance
- High Temperature Resistance
- Abrasion Resistance
- UV Resistance
- Conductive Polymer Coating
- Printable Coating
- Vermiculite

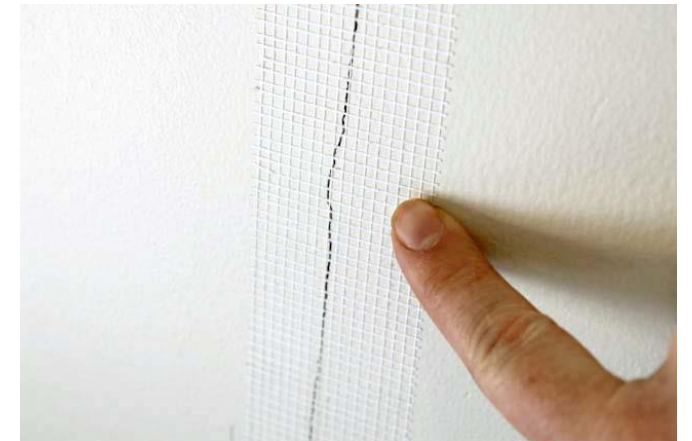
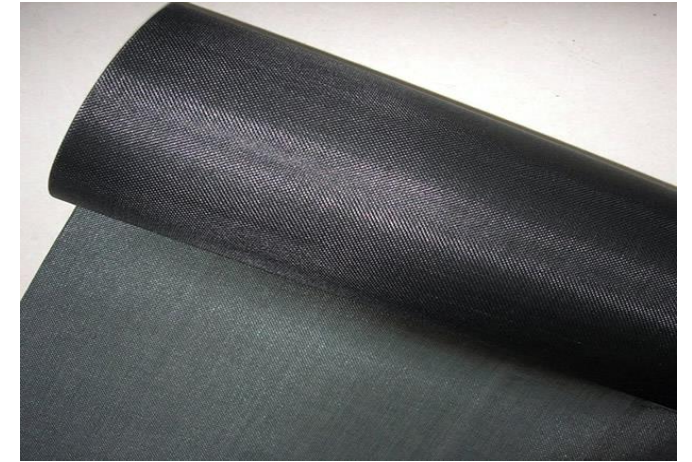


3. Laminated

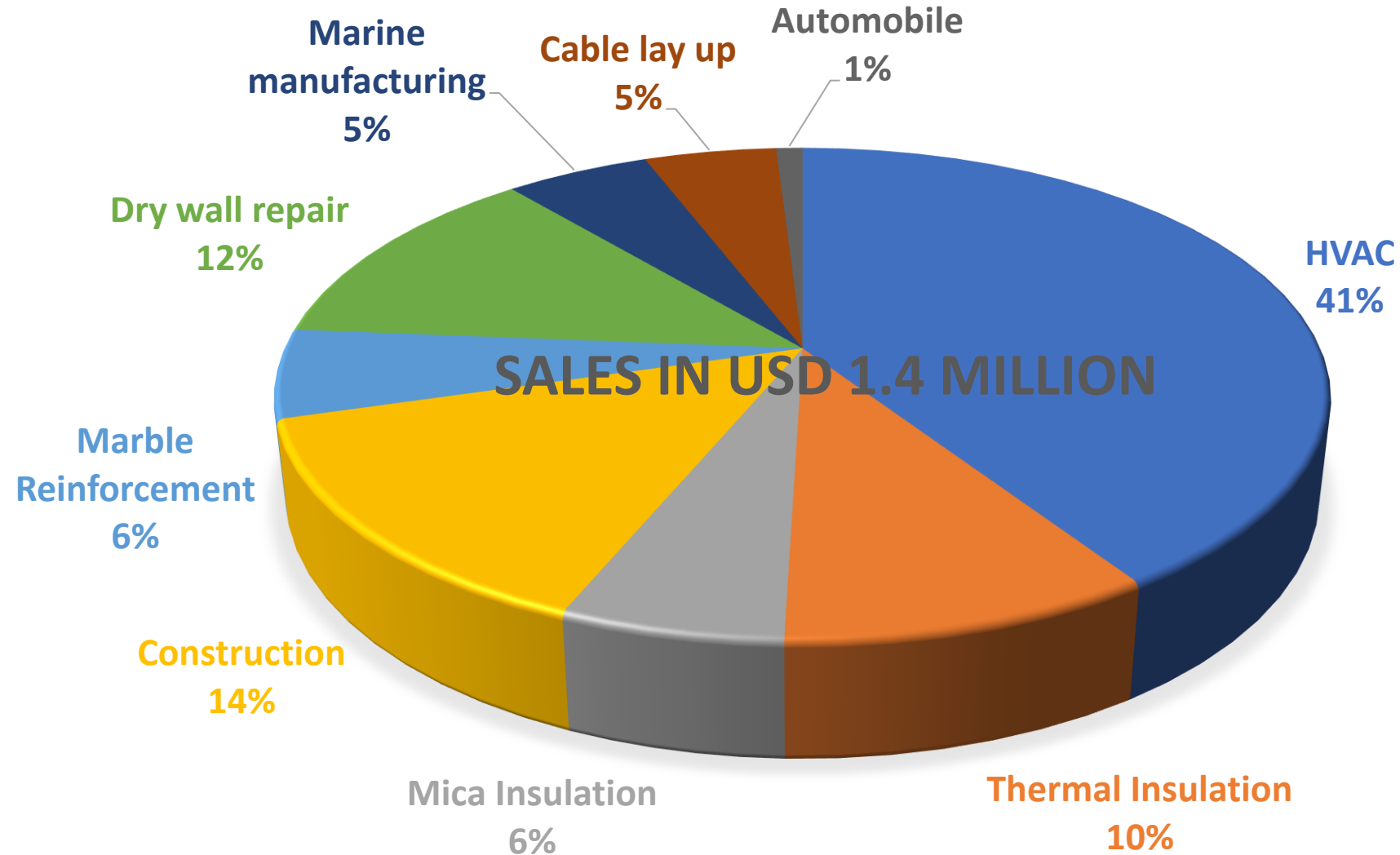
- Alufoil Lamination
- PE Lamination
- PET Films Lamination

4. With Adhesion

- PSA
- Solvent Base Adhesive Coating
- With or Without Paper Liner
- With or Without PET Liner



Applications –2022 scenario



Packaging - mesh

Standard packing material		Dimensions
Pallet Dimensions	:	1120 x 760 x 150 mm
Carton Dimensions (Cap cartons)	:	1120 x 760 x 1005 mm
Paper core Dimensions	:	50 ID x 3 mm thickness x 1005 mm



Packaging – Fabrics – Mostly as per customer's requirement



- 1) Packing is always as per customer's requirement
- 2) We only use standard packing material suitable for International shipping



- Production capacity increase by 50% for both Fabric and Mesh to meet the demand and reduce the lead time
 - Installation Of special automatic Air Jet Looms.
 - Overseas office in USA , UAE
 - To concentrate on new markets such as USA , Australia
 - To be a part of electronic growth story in India.
 - Establishing R & D Centre – Development of local chemicals, binders, reduction in product cost to cater the high demand in the coming years.
 - Generation of additional business to Domestic MSME's
-

THANK YOU
