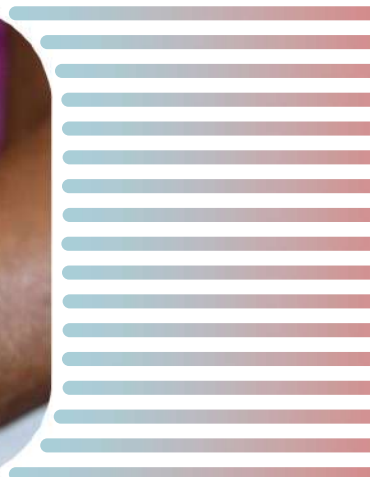




G.R.CORPORATION
SINCE 1979



MEDICAL
CATALOG
2023



PHLEBOLOGY & LYMPHOLOGY

- 01** SHORT STRETCH
COMPRESSION
BANDAGES
- 02** LONG STRETCH
COMPRESSION
BANDAGES



SPORTS AND ORTHOPAEDIC

- 03** PERMANENTLY
ELASTIC
BANDAGES
- 04** CREPE
BANDAGES
- 05** IDEAL
BANDAGES



WOUND CARE

- 06** ELASTIC
FIXATION
BANDAGES



RESPIRATORY CARE

- 07** MASK ELASTIC/
CORD



SAFETY AND SUPPORT

- 08** PATIENT SAFETY
BELTS/ STRAPS

01



SHORT STRETCH COMPRESSION BANDAGES

Short stretch bandages provide a higher compression that is necessary for lymphatic drainage as well as venous flow. Being reusable and easily washable they end up being economical for people suffering from venous edema, lymphedema, post-traumatic swelling, etc.



WASHABLE



EASY TO USE



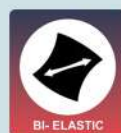
DRAPABILITY



SKIN- FRIENDLY



ABSORBENT



BI-ELASTIC SHORT-STRETCH BANDAGE

COLOURS



Brown

SPECIFICATIONS

Material
Composition 100% Cotton

Extensibility Warp direction approx. 90%
Weft direction approx. 40%

DIMENSIONS

Length (Stretched)	Width
5m	6/ 8/ 10/ 12 cm



STRONG SHORT STRETCH COMPRESSION BANDAGE

COLOURS



Brown

SPECIFICATIONS

Material Composition 100% Cotton

Extensibility approx. 90%

DIMENSIONS

Length (Stretched)	Width
5m	6/ 8/ 10/ 12 cm
10m	10/ 12 cm



EXTRA SHORT-STRETCH COMPRESSION BANDAGE

COLOURS



Brown

SPECIFICATIONS

Material Composition approx. 66% cotton, 34%
polyamide

Extensibility approx. 40%

DIMENSIONS

Length (Stretched)	Width
5m	6/ 8/ 10/ 12 cm

02



LONG STRETCH COMPRESSION BANDAGES

Long stretch compression bandages have high extensibility and recoil. They can be applied smoothly and will conform according to the contour of the body. Most commonly it is used to treat sprained areas of the body and provide support and relief to tendons, ligaments, and muscles.



LOW WRINKLING



EASY TO USE



DRAPABILITY



SKIN- FRIENDLY



AIR PERMEABLE



ELASTIC LONG- STRETCH COMPRESSION BANDAGE

COLOURS



Brown

SPECIFICATIONS

Material Composition	approx. 57% cotton, 33% viscose, 8% polyamide, 2% elastane
----------------------	--

Extensibility	approx. 180%
---------------	--------------

DIMENSIONS

Length (Stretched)	Width
3.5m	6/ 8 cm
4.5m	6/ 8/ 10/ 12 cm
7m	8/ 10/ 12 cm



PERMANENTLY ELASTIC LONG-STRETCH BANDAGE FOR LIGHT COMPRESSION

COLOURS



Brown

SPECIFICATIONS

Material Composition	approx. 82% cotton, 13% polyamide, 5% elastane
----------------------	--

Extensibility	approx. 170%
---------------	--------------

DIMENSIONS

Length (Stretched)	Width
7m	6/ 8/ 10/ 12 cm



PERMANENTLY ELASTIC LONG-STRETCH BANDAGE FOR STRONG COMPRESSION

COLOURS



Brown

SPECIFICATIONS

Material Composition	approx. 85% cotton, 7% polyamide, 8% elastane
----------------------	---

Extensibility	approx. 180%
---------------	--------------

DIMENSIONS

Length (Stretched)	Width
7m	6/ 8/ 10/ 12/ 20 cm
14m	10 cm



ELASTIC LONG- STRETCH BANDAGE WITH COLOURED CENTRE LINE

COLOURS



White

SPECIFICATIONS

Material Composition approx. 84% viscose, 11.5% polyamide, 4% elastane, 0.5% cotton

Extensibility approx. 180%

Properties coloured centre line

DIMENSIONS

Length (Stretched)	Width
8.7m	10 cm
11.3m	10 cm



BI- ELASTIC LONG- STRETCH BANDAGE WITH BLUE CENTRE LINE

COLOURS



Brown

SPECIFICATIONS

Material Composition approx. 52% cotton, 38% polyamide, 10% elastane

Extensibility warp direction approx. 130%
weft direction approx. 70%

Properties coloured centre line

DIMENSIONS

Length (Stretched)	Width
3m	10 cm
3.5m	8/ 10 cm
4m	10 cm
5m	10 cm

03



PERMANENTLY ELASTIC BANDAGES

Permanently elastic support bandages should only be applied on intact skint. They serve as compression, support, relief, and fixation dressings. They are recommended for the treatment of blunt injuries, musculoskeletal injuries, and post-fracture care. Some of the bandages can be washed and reused multiple times.



WASHABLE



EASY TO USE



DRAPABILITY



SKIN- FRIENDLY



AIR PERMEABLE





PERMANENTLY ELASTIC RELIEF AND SUPPORT BANDAGE WITH SELVEDGE

COLOURS



Brown



White

SPECIFICATIONS

Material Composition approx. 69% cotton, 31% polyamide

Extensibility approx. 75%

DIMENSIONS

Length (Stretched)	Width
5m	6/ 8/ 10/ 12/ 15/ 20 cm



LIGHT WEIGHT PERMANENTLY ELASTIC RELIEF AND SUPPORT BANDAGE

COLOURS



Brown



Natural White

SPECIFICATIONS

Material Composition approx. 65% cotton, 35% polyamide

Extensibility approx. 80%

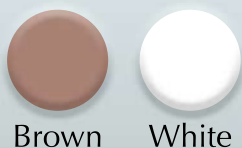
DIMENSIONS

Length (Stretched)	Width
4.5m	6/ 7.5/ 8/ 10/ 15 cm
4.75m	6/ 8/ 10 cm



PERMANENTLY ELASTIC RELIEF AND SUPPORT BANDAGE

COLOURS



Brown

White

SPECIFICATIONS

Material Composition approx. 89% cotton, 8% polyamide, 3% elastane

Extensibility approx. 95%

DIMENSIONS

Length (Stretched) Width

5m

4/ 6/ 8/ 10/ 12/ 15 cm



COLOURED PERMANENTLY ELASTIC RELIEF AND SUPPORT BANDAGE

COLOURS



Yellow

Green

Blue

Red

SPECIFICATIONS

Material Composition approx. 76% cotton, 23% polyamide, 1% elastane

Extensibility approx. 65%

DIMENSIONS

Length (Stretched) Width

5m

4/ 6/ 8 cm



PERMANENT ELASTIC SUPPORT AND RELIEF BANDAGE

COLOURS



Bleached
White



Natural
White

SPECIFICATIONS

Material Composition	approx. 66% cotton, 33% polyamide, 1% elastane
-------------------------	---

Extensibility	approx. 100%
---------------	--------------

DIMENSIONS

Length (Stretched)	Width
5m	4/ 6/ 8/ 10/ 12/ 15/ 20 cm



PERMANENTLY ELASTIC CREPE BANDAGE WITH BLUE LINES

COLOURS



White

SPECIFICATIONS

Material Composition	approx. 96% cotton, 3% polyamide, 1% elastane
-------------------------	--

Extensibility	approx. 100%
---------------	--------------

Properties	Blue lines on the sides
------------	-------------------------

DIMENSIONS

Length (Stretched)	Width
4m	5/ 7/ 10 cm

04



CREPE BANDAGES

Textile elastic crepe bandages are all bleached and composed of 100% cotton. They are stretchy due to the finely twisted cotton yarn and used only on intact skin. They are used as dressings for support, relief, and fixation. They are advised for the treatment of injuries of the support and locomotor system, as well as for joint dressings.



EASY TO CUT



EASY TO USE



DRAPABILITY



SKIN- FRIENDLY



AIR PERMEABLE





MEDIUM WEIGHT ELASTIC
CREPE BANDAGES

COLOURS



Bleached
White

SPECIFICATIONS

Material Composition	100% cotton
Extensibility	approx. 120%

DIMENSIONS

Length (Stretched)	Width
4m	5/ 6/ 8/ 10/ 12/ 15 cm
4.5m	5/ 8/ 10/ 15 cm



LIGHT WEIGHT ELASTIC CREPE
BANDAGE WITH COLOURED
LINES

COLOURS



Bleached
White

SPECIFICATIONS

Material Composition	100% cotton
Extensibility	approx. 120%
Properties	Red lines on the side

DIMENSIONS

Length (Stretched)	Width
4m	5/ 7/ 10/ 15/ 20 cm
5m	20 cm
10m	10/ 15 cm

05



IDEAL BANDAGES

Ideal Bandages are made of 100% cotton and stretchy due to finely twisted cotton yarn. They are suitable for support, relief, fixation, and compression dressings. They are recommended for treating injuries of the support and locomotor system, including joint dressings. These bandages are washable and reusable on intact skin.



WASHABLE



EASY TO USE



DRAPABILITY



SKIN- FRIENDLY



AIR PERMEABLE





COLOURED ELASTIC SUPPORT AND RELIEF BANDAGE

COLOURS



Brown White Blue

SPECIFICATIONS

Material Composition	100% cotton
Extensibility	White/Brown: approx. 100% Blue: approx. 95%

DIMENSIONS

Length (Stretched)	Width
5m	4/ 6/ 8/ 10/ 12/ 15/ 20/ 30 cm



ELASTIC SUPPORT AND RELIEF BANDAGE WITH COLOURED CENTRE LINE

COLOURS



Brown White

SPECIFICATIONS

Material Composition	100% cotton
Extensibility	approx. 95%
Properties	Coloured centre line

DIMENSIONS

Length (Stretched)	Width
4.5m	5/ 7.5/ 10/ 15 cm

06



ELASTIC FIXATION BANDAGES

Elastic fixation bandages are intended for used on intact skin. They are used for fixation of primary and secondary dressings, splints, casts, catheters, and cannulas. They can also be utilised on joints, as well as angular and round body parts. It provides a slightly immobilising effect and helps to reinforce muscles, tendons, ligaments, and joints.



EASY TO CUT



EASY TO UNWIND



DRAPABILITY



SKIN- FRIENDLY





LIGHT SYNTHETIC FIXATION
BANDAGE

COLOURS



White

SPECIFICATIONS

Material Composition	approx. 54% polyamide, 46% viscose
----------------------	------------------------------------

Extensibility	approx. 135%
---------------	--------------

DIMENSIONS

Length (Stretched)	Width
4m	4/ 6/ 8/ 10/ 12 cm
8m	10 cm



CREPE STRUCTURE FIXATION
BANDAGE

COLOURS



White

SPECIFICATIONS

Material Composition	approx. 71% viscose, 29% polyamide
----------------------	------------------------------------

Extensibility	approx. 140%
---------------	--------------

DIMENSIONS

Length (Stretched)	Width
4m	4/ 6/ 8/ 10/ 12 cm

07



MASK ELASTIC/ CORD

Mask elastics are widely used in all of these forms i.e. knitted, woven, braided, cord or tubular. The different styles of construction impart unique features to the finished elastic. We offer them in different sizes, quality, softness, elasticity and can be customised to suit your needs.



WASHABLE



EASY TO USE



SKIN- FRIENDLY



EASY TO CUT





OXYGEN MASK ELASTIC WITH TIPPING AT THE ENDS

COLOURS



Green



Custom

SPECIFICATIONS

Material Composition	Polyester/ Nylon Rubber/ Spandex
----------------------	----------------------------------

Extensibility	110 - 200%
---------------	------------

DIMENSIONS

Length (Stretched)	Width
17"	6 -12 mm
21"	6 -12mm



FLAT KNITTED/ WOVEN MASK ELASTIC

COLOURS



White



Black



Custom

SPECIFICATIONS

Material Composition	Polyester/ Nylon Rubber/ Spandex
----------------------	----------------------------------

Extensibility	110 - 200%
---------------	------------

DIMENSIONS

Packaging	Width
Spooling/ Layering	3 - 8 mm



SOFT TUBULAR MASK ELASTIC

COLOURS



White Black Custom

SPECIFICATIONS

Material Composition	Polyester/ Nylon Rubber/ Spandex
----------------------	-------------------------------------

Extensibility	110 - 200%
---------------	------------

DIMENSIONS

Packaging	Width
-----------	-------

Spooling/ Layering	3 - 8 mm
-----------------------	----------



MASK ELASTIC CORDS

COLOURS



White Black Custom

SPECIFICATIONS

Material Composition	Polyester/ Nylon Rubber/ Spandex
----------------------	-------------------------------------

Extensibility	110 - 200%
---------------	------------

DIMENSIONS

Packaging	Width
-----------	-------

Spooling/ Layering	3 - 8 mm
-----------------------	----------

08



PATIENT SAFETY BELTS/ STRAPS

Short stretch bandages provide a higher compression that is necessary for lymphatic drainage as well as venous flow. Being reusable and easily washable they end up being economical for people suffering from venous edema, lymphedema, post-traumatic swelling, etc.



WASHABLE



HIGH LOAD CAPACITY



SKIN- FRIENDLY



DURABLE





PATIENT LIFTING SLINGS/ WEBBINGS

DESCRIPTION

A wide range of slings for every patient type and need. For use with ceiling and floor lifting devices to transfer patients in a seated position to and from bed, chair, bathroom, wheelchair and floor.

COLOURS



White



Black



Custom

SPECIFICATIONS

Material
Composition

High Tenacity Polyester/
Polypropylene

FEATURES



Washable



Skin
Friendly



High Load
Capacity



Durable

DIMENSIONS

Packaging

100/ 200 mtr
Rolls

Width

upto 50mm



WHEELCHAIR SAFETY BELT/ WEBBINGS WITH BUCKLE

DESCRIPTION

Add more security to the wheelchair user by installing this safety seat belt on the chair. Ideal to use when the chair is moving or when you are worried that someone may fall off. Equipped with your choice of pinch buckles or any other fastening.

COLOURS



White



Black



Custom

SPECIFICATIONS

Material
Composition

Polyester/ Polypropylene/
Nylon

FEATURES



Washable

Skin
FriendlyHigh Load
Capacity

Durable

DIMENSIONS

Length
(Stretched)

48/ 60 in

Width

1/ 2 inch



FETAL MONITORING ELASTIC BELT WITH BUTTON-HOLE

DESCRIPTION

Fetal heart rate monitoring measures the heart rate and rhythm of your baby. Soft and comfortable straps secure ultrasound and toco transducers to the mother during fetal monitoring. It comes with Button-hole closure. All-elastic material allows ease in application, adjustment and removal.

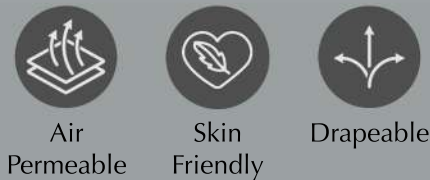
COLOURS



SPECIFICATIONS

Material Composition	Polyester, Spandex Latex free
Extensibility	approx. 130%

FEATURES



DIMENSIONS

Length (Stretched)	Width
48/ 36 inch	2.375 / 1.5 inch

OUR OFFICES

SRILANKA

SOUTH AFRICA

KENYA

BANGLADESH



OUR CLIENTS

3M

Honeywell

GET IN TOUCH



18 C-2 POKHARPUR,
KANPUR- 208010
INDIA



+91 -9838101109
+91- 8400179999



www.grcorporation.com



export@grcorporation.co.in



[grc.elastics](https://www.instagram.com/grc.elastics)