



**JUMBO®**  
*high tex solutions*

## Industrial | Sports

JUMBO-Textil – your solution partner for high-tech textiles



# Who we are. What we do.

## **JUMBO-Textiles.** **For maximum safety.**

Lifts, gates, trampolines, rescue equipment: textiles for sports equipment and industry need to offer maximum safety – under an enormous load. JUMBO-Textil is your expert for demanding technical textiles. We develop, calculate and manufacture textile solutions for extreme requirements. Precisely and for a perfect fit.



## **High-tech company.** **For industrial, sports, automotive and more.**

At our new company headquarters in Sprockhövel (NRW), more than 70 employees develop and produce tapes and cords, nets and net systems, and textile components. For many branches – and for customers all over the world.



## **Latest production technology.** **For innovative solutions.**

Our machine park with its ultra-modern production facilities is always state-of-the-art. It helps us achieve the most innovative manufacturing processes for developing and producing technical textiles. And it can be variably used and modified for individual textile solutions.



## **Competent solution partner.** **For our customers.**

At JUMBO-Textil we view ourselves as a competent solution partner to industry. Our thoughts and actions centre on the needs of our customers. Our most important goals: intelligent integrated solutions, highest product quality and satisfied customers. Intentions that we champion. And have done for more than 100 years.





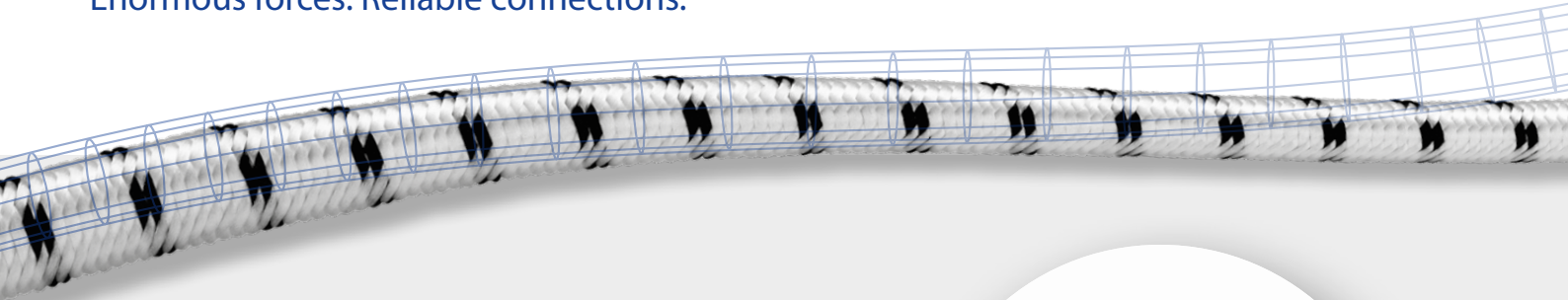
*”JUMBO-Textil is more than a manufacturer of high-quality textiles. We are your innovative partner for industrial textiles of the future.“*

Andreas Kielholz,  
Managing Director JUMBO-Textil



# Narrow textiles for industry.

Enormous forces. Reliable connections.

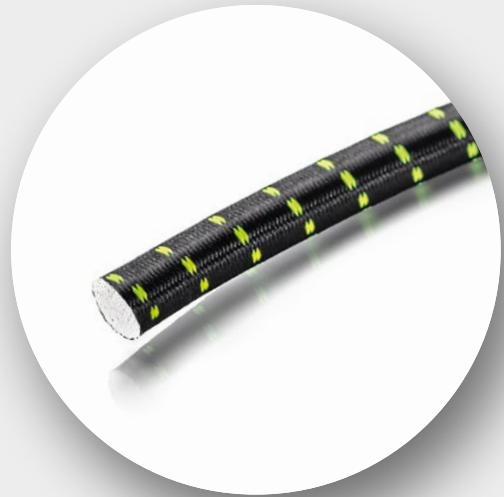


## Reliable textiles. For extreme requirements in industry.

Crane trolleys, door and gate technology, rescue equipment ... – extreme conditions often prevail where our textiles are deployed. This could mean heavy loads. Or hot and wet conditions. It is for these special stresses in industry that we develop elastic and non-elastic tapes and ropes which also come with extraordinary specifications. And enable extraordinary achievements. Precise. Safe. Reliable.

### Potential fields of application:

- Crane trolleys
- Cover systems
- Force transfer and damping in crash testing systems
- electrical sliding doors
- Sports, play and rescue equipment



#### Rubber cable

- double braided with variable indicating thread, variable diameters and colours, customer-specific equipment



#### Braided rubber strand

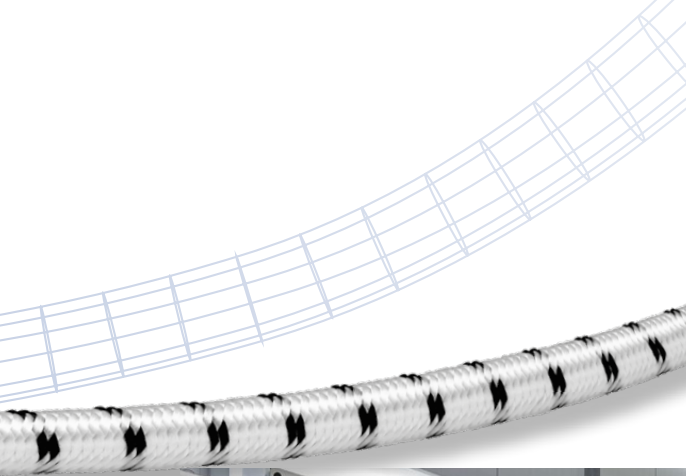
- variable width and colour, customer-specific equipment



#### Braided rubber hose stand with expansion limiter

- with metal eyelet and an attached metal hook, flexible at cold temperatures, variable diameters and colours, customer-specific equipment





Continuous use under demanding conditions:  
premium elastic cable in high speed doors



#### ElasTool

- safe fastening – even under extreme conditions
- weatherproof and temperature-resistant
- simple assembly
- for all agreed elastic cables
- innovative exchangeable head system – an in-house development
- for configuration, e.g., with hooks, eyes or flanges



#### Rubber cable

- double braided, flexible at cold temperatures, variable diameters and colours, customer-specific equipment

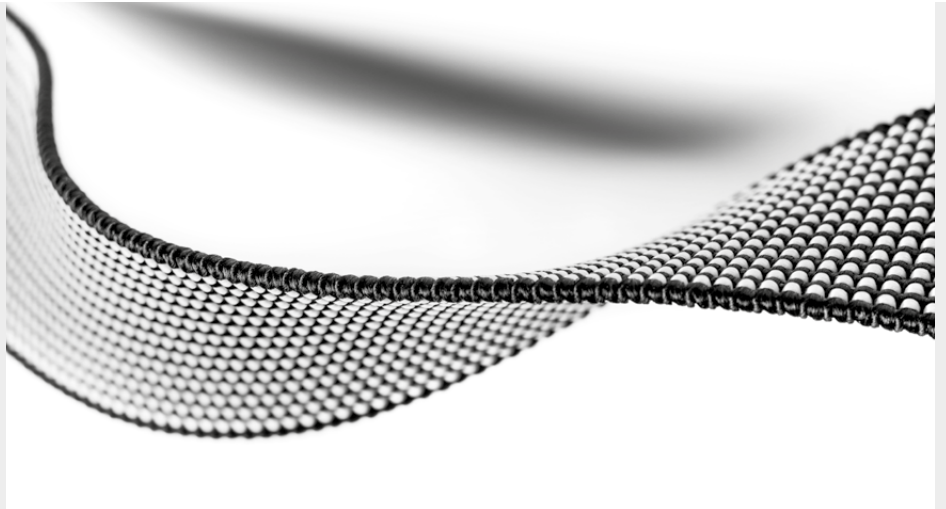


#### Rubber tape

- woven, transverse elasticity, variable width and colour, customer-specific equipment

# Tapes. Braids. Cords. Nets.

Innovative narrow textiles for protective and functional textiles.



## Research & Development.

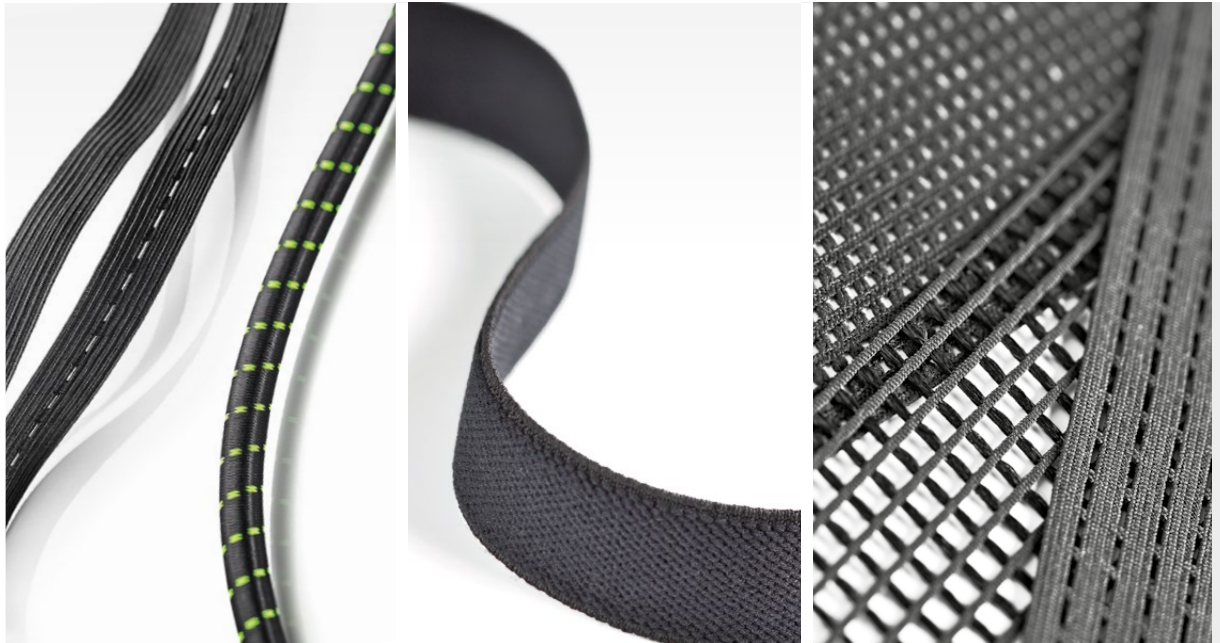
### In cooperation with research institutions.

Within the framework of collaboration with universities and other research institutions, we ourselves are involved in the further development of innovative textiles and manufacturing processes. The latest research results flow directly into our new developments.



# Braiding. Weaving. Knitting.

What we offer. What we can do.



|                                  | Braids   |  | Woven fabrics                                 | Knitted fabrics                     |
|----------------------------------|--|--|---|-------------------------------------|
| Item                             | braids<br>buttonhole braids  | rubber cable<br>cords<br>braided hoses | tapes<br>straps                               | nets<br>raschel goods               |
| Property                         | elastic, non-elastic   |  | elastic, non-elastic,<br>transverse-elastic   | elastic, non-elastic,<br>bi-elastic |
| Width/Diameter                   | 1,5 mm - 65 mm   | 0,5 mm - 40 mm                         | 2 mm - 320 mm                                 | depending<br>on the design          |
| Elongation<br>(if elastic)       | 5 % - 200 %  | 5 % - 300 %                            | 10 % - 200 %                                  | depending<br>on the design          |
| Special features                 | integration of<br>longitudinal holes<br>possible   | round, flat,<br>hose                   | integration of longitudinal<br>holes possible | with and without<br>knitted on edge |
| Textile materials                | spun rayon, cotton, viscose filament, polyacrylics, polyamide (smooth and textured), polyester (smooth and textured), recycling PES, polypropylene, natural fibres, low-density polyethylene, aramid, dyneema, nomex and other special yarns |  |   |                                     |
| Elastic materials                | elastodiene (natural rubber), silicone, lycra, dorlastan, polyisoprene, neoprene, PES elastic monofilaments  |  |   |                                     |
| Finishing                        | low-shrinkage, flame retardant, water-repellent, oil-repellent, write protection, hot-fixing   |  |   |                                     |
| Packaging                        | on itself, on bobbins (also special solutions), on cable drums, laid in cardboard boxes (for yard goods), loose in cardboard boxes, bundled, individually packed (for cuts and components)   |  |   |                                     |
| Cutting                          | cold, hot, bevel, ultrasonic and laser cuts  |  |   |                                     |
| Tailoring/<br>Textile components | punching, slitting, perforating, sewing, applying eyelets, riveting, pressing, assembling with metal and plastic connecting elements   |  |   |                                     |
| Plastic components               | PA, PP, POM, PE, TPE   |  |   |                                     |
| Metal components                 | stainless steel, steel, copper, brass, aluminium   |  |   |                                     |

# Textiles for sports and fitness equipment.

On the move.

## Precisely defined textiles. For maximum safety of sports and fitness equipment.

Elastic ropes and connecting systems for bungee systems, elastic cords for trampolines, rugged and skin-friendly tapes for fitness equipment, catchment nets ... – sports equipment manufacturers rely on products by JUMBO-Textil. They ensure safety and functionality. And meet precisely defined specifications for force-expansion behaviour, use cycles and flexibility.

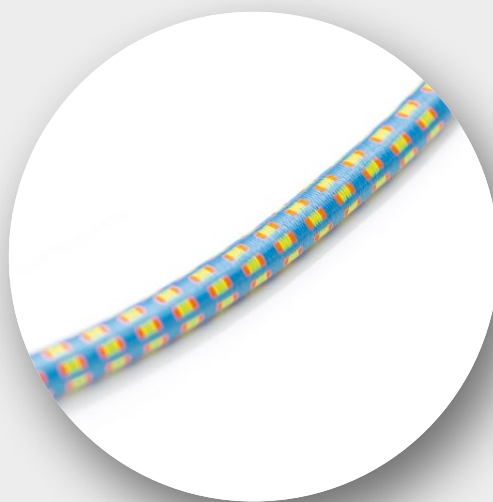


Maximum safety, precise specification:  
you can rely on narrow textiles by JUMBO-Textil.



### Braided rubber cable

- with variable indicating thread, variable diameters and colours, customer-specific equipment



### Rubber cable

- double braided, variable diameters and colours, customer-specific equipment



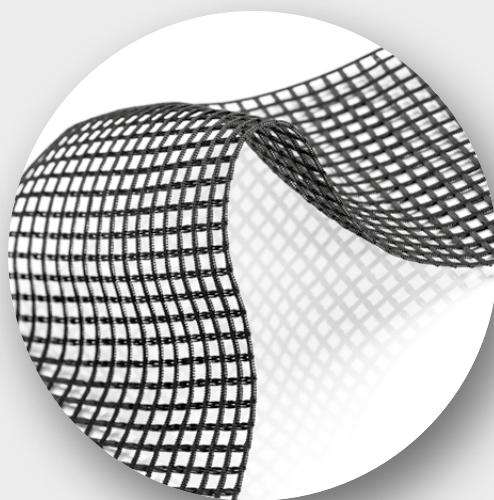


Precision for sports and leisure:  
the expansion values of our elastic  
tapes are exactly defined.



#### **Braided rubber cable**

- double braided, braiding not easily displaceable, variable diameters and colours, customer-specific equipment



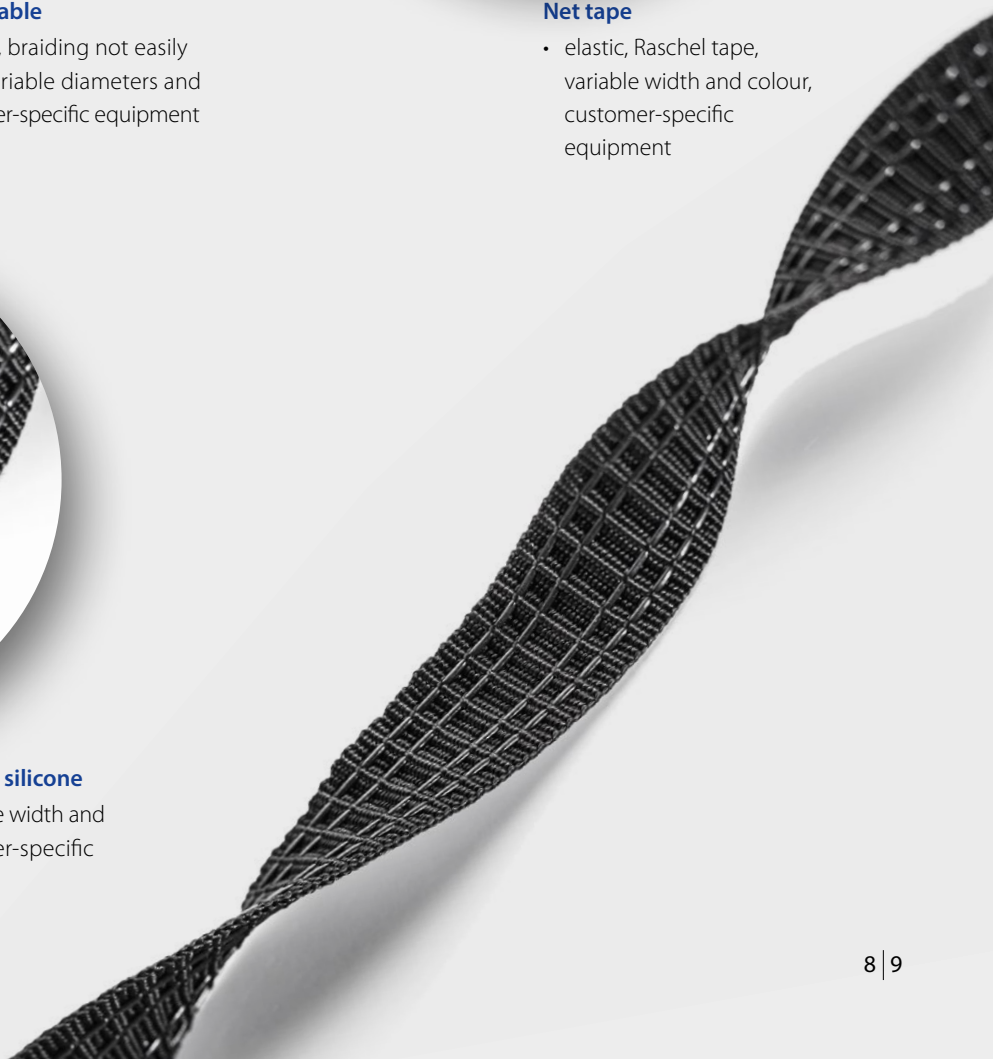
#### **Net tape**

- elastic, Raschel tape, variable width and colour, customer-specific equipment



#### **Woven tape with silicone**

- non-slip, variable width and colour, customer-specific equipment



# Customized. Focused on solutions. Personal.

Individual solutions from JUMBO-Textil.



## Your solution partner

The solution is as individual as the requirement. JUMBO-Textil is the solution partner. Our development team develops narrow textiles that do exactly what you want.

## Intensive exchange

From A to Z: From the initial exchange on your special requirements, sample production and production to ideas for your products of the future – our experts are always at your side and always active for you.

## We are here for you.

What can we develop for you?  
Please contact us for more information.  
Your Industrial and Sports Team  
Phone: +49 2339 929397-118  
[jean.poburski@jumbo-textil.de](mailto:jean.poburski@jumbo-textil.de)





# Quality. Sustainability Responsibility.

Maximum capability for exacting demands.



## Certified environmental management. For people and nature.

We are a future-oriented company. We take our responsibility for people and the environment very seriously – in everything we do: we minimise delivery routes to reduce CO<sub>2</sub> emissions. Our raw materials comply with EU environmental directives. Many of our products are manufactured according to OEKO-TEX® Standard 100. Our environmental management system is certified according to DIN EN ISO 14001.

## Tried and trusted quality. For our customers.

Highest quality takes top priority at JUMBO-Textil. In demanding audits we regularly confirm our consistent and successful quality and process management.

All business and production processes are integrated into quality assurance systems that are certified according to IATF 16949 and ISO 9001.



Management  
System  
ISO 9001:2015  
IATF 16949:2016

[www.tuv.com](http://www.tuv.com)  
ID 0910072072

TÜV Rheinland  
certified management system  
ISO 14001

OEKO-TEX®  
CONFIDENCE IN TEXTILES  
**STANDARD 100**  
17.0.05177 HOHENSTEIN HTTI  
Tested for harmful substances.  
[www.oeko-tex.com/standard100](http://www.oeko-tex.com/standard100)





JUMBO-Textil develops and produces at its company headquarters in Sprockhövel – for customers and partners worldwide.



**JUMBO-Textil GmbH & Co. KG**  
 Stennert 7  
 45549 Sprockhövel  
 Germany  
 Phone: +49 2339 929397-0  
 Fax: +49 2339 929397-100  
[info@jumbo-textil.de](mailto:info@jumbo-textil.de)  
[www.jumbo-textil.de](http://www.jumbo-textil.de)

