

MAKE REPAIRING EASIER

Private and Confidential

This document contains information which is confidential and proprietary to the Shenzhen tooltech Intelligent Co. LTD. Any dissemination, distribution, copying, use of or reliance upon the confidential and proprietary information contained herein is unauthorized and strictly prohibited



About Us



Products



Contacts

ABOUT US

Established in 2010, XTOOLTECH is an automotive intelligent diagnostic tools supplier based in Shenzhen, China. Adhering to the principle of "make repairing easier", XTOOL is committed to R&D, production and sales of automotive intelligent diagnostic equipments and operating cutting-edge technologies such as car networking, big data and cloud computing in the field of automotive electronic diagnosis.

OUR VISION

To be the world's leading provider of automotive electronic diagnostic equipment



OUR MISSION

MAKE REPAIRING EASIER

BUSINESS PERSPECTIVE

- Strive to provide the most professional tools & services to our customers
- Build reliable & responsible relationship inside & outside the company
- Committed to customer satisfaction & success

XTOOL
Next Tool for Auto



2010
-
2011

- Founded in Shenzhen China
- Launched the first mobile Internet diagnostic device

2012
-
2013

- Obtained Apple MFI Developer Certification License
- Obtained High-tech Enterprise Certification

2014
-
2015

- Reached a strategic partnership with Tencent
- Analysis system & method of invention patent based on Vin Code
- Reached a strategic partnership with Mobike
- Reached a strategic partnership with ZTE

2016
-
2017

- Awarded as National High-tech Enterprises
- Reached a strategic partnership with Daimler Benz
- Designated Equipment for 45th WorldSkill Contests



DEVELOPMENT PROCESS



**2018
-
2019**

- U.S Sales Team was formed
- Reached a strategic partnership with DIDI
- Top 20 Repair Tool - H6 Pro

**2020
-
2021**

- Reached a strategic partnership with Bosch
- Obtained IATF169 Certificate
- Top 100 Auto Maintenance Enterprise in China
- 100+ Patents & Software Documents

**2022
-
2023**

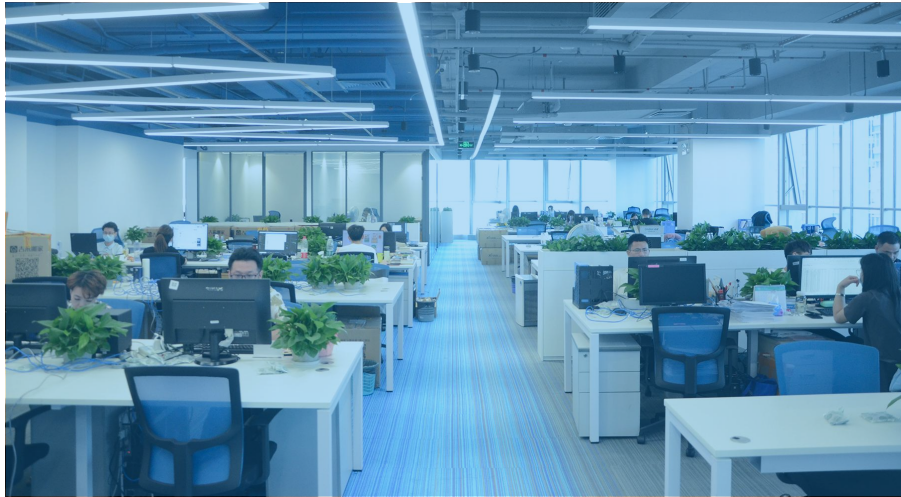
- Feb. Key cutting machine KNC91 Released
- Aug. XT series Launched



DEVELOPMENT PROCESS



OUR COMPETENCE



R&D Team

- R&D(200+) accounts for more than 45% employee
- Independent R&D laboratory



Manufacturing

- Modern production base 10Km²
- ISO9001 quality management standard

OUR COMPETENCE



Quality

- IATF-16949 quality control system
- 5 major standard testing links



Services

- No- delay response services
- Professional repair expert team

Vehicle Model Agreement Cloud Platform

- After 10 years of accumulation, it has more than 95% of rich vehicle model protocol resources, strong vehicle underlying data analysis and processing capabilities, and strong cloud platform R&D capabilities to achieve integrated product development management.

95%

- Has more than 95% of vehicle model agreement resources

GB 18285-2018	ISO 27145	SAE J2012
GB 38900	ISO 15031	SAE J1979
HJ 437	ISO 15765	SAE J1962
HJ 500	ISO 13400(DoIP)	SAE J1939
JT/T 632-2018	ISO 14229	SAE J1850
ISO 9141	ISO 14230	IEEE Std 802.3

PRODUCTION

XTOOL has a production base of ten thousands of square meters and multiple production lines, which can fully guarantee production capacity.

The production base adopts modern management methods to provide customers with full product life cycle services including R&D, production, maintenance and recycling.

10000m²

Production workshop

500+

Employees

750K_{pcs}

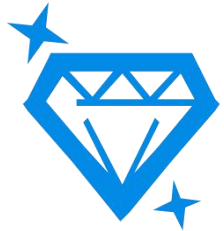
Production capacity

2

Self-owned Labs



XTOOL
Next Tool for Auto



Perfect Quality System

Taking IATF 16949 (including ISO 9001) as the quality system and integrated product development IPDFSS (IPD & DFSS) as the main body of product development management;



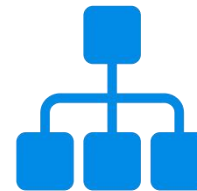
Traceable Quality

Through OA, K3, SVN development platform, OA→RDM, ZenTao, MES, ERP, customer service data center and other IT systems, the quality process of our marketing, R&D, production, customer service and other aspects can be traced.



Valid Certification

Recognised ongoing domestic and international certifications: system certification ISO 9001, IATF 16949, ISO 14001; product certification: UK, RoHS 2; safety certification: CCC, UL, CE, CB, FCC certification.



Well Organized and Guaranteed

XTOOL Quality Center consists of R&D Quality Department, System Internal Audit and Document Control Department, Tangtou Factory Quality Department, Taiwan Industrial Zone Maintenance Factory Quality Department, multiple first-class laboratories, and multiple related laboratories (4S stores or repair shops). Professional quality and testing verification personnel account for 25.32%

Through the ongoing international quality certification system

International Recognized QA System

Certification System



ISO9001
Quality management
system



IATF 16949 Quality
Management System for
the Automotive Industry



ISO 14001 Enterprise
environmental
management system

Certified Product



UK Conformity Assessed
UKCA



SRRC



ROHS 2.0



ISED



GB4943.1-2022
Product quality
inspection report

Safety Certification



China Compulsory
Certification

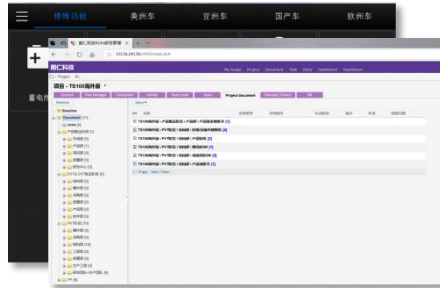


EU CE
certification



FCC
certification

R&D QUALITY ASSURANCE



Based on SVN platform and OA → RDM management

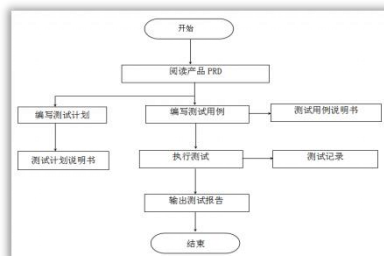
The CBB platform for diagnostic product design based on SVN effectively guarantees product quality and fast and efficient customer customization services with fast, efficient, stable and traceable design.

OA → RDM process management ensures effective management of IPD-based design, accurate and traceable design delivery, and ensures design quality.

序号	评审项目	评审日期	评审人	评审结果
1	产品需求评审	2023-01-10	张三	通过
2	方案评审	2023-01-15	李四	通过
3	详细设计评审	2023-01-20	王五	通过
4	软件需求评审	2023-01-25	赵六	通过
5	软件详细设计评审	2023-01-30	钱七	通过
6	硬件需求评审	2023-02-05	孙八	通过
7	硬件详细设计评审	2023-02-10	周九	通过
8	测试计划评审	2023-02-15	吴十	通过
9	测试用例评审	2023-02-20	郑十一	通过
10	验收测试评审	2023-02-25	冯十二	通过

Design quality and technical review

Based on IPD's TR1-TR6 six-stage review, each process is technically reviewed from concept → planning → design → mass production. The review is based on a three-level review mechanism of self-evaluation, mutual evaluation, and stage-by-stage evaluation. The requirements, ID, electronics, structure, The software, packaging, engineering process, supply chain, test verification, customer service and other stages of the package are reviewed, and the design quality is ensured through a comprehensive and in-depth review through the TR system.



Hardware testing capabilities

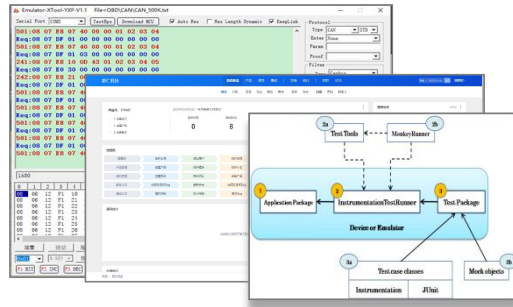
hardware test

Staffing: Electronic information related majors, skilled in automotive communication protocols

Test tools: oscilloscope, spectrum analyzer, Bluetooth comprehensive tester, electronic load, power analyzer, etc.

Testing requirements: Conduct use case review before hardware testing to improve test coverage, strictly implement use cases, and ensure the quality of hardware testing.

PRODUCT QUALITY ASSURANCE



Software Test

Staffing: Computer-related majors, master at least one programming language, proficient in automotive communication protocols

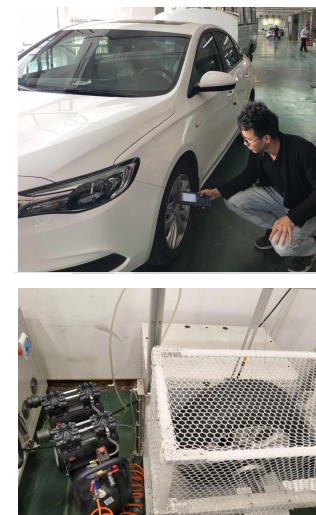
Testing tools: ZenTao defect management, Emulator simulation platform, AirtestIDE, postman, monkey, etc.

Testing requirements: Conduct use case review before software testing and strictly implement use cases to ensure software quality.



Reliability Verification

To ensure that products comply with national standards and customer requirements, all finished products must pass 100% reliability testing before shipment. The company has established relatively complete experimental equipment.



Reliability Verification

Staffing: automotive related majors, 5-15 years of automotive maintenance knowledge Testing resources: cooperative testing points of more than 200 4S stores and repair shops Testing requirements: Each software/hardware release has soft testing/hard testing and then actual testing, combined with actual testing Carry out diagnostic testing on software/hardware and vehicles, and test and cover each item according to the actual measured stress requirements. If bugs occur, they will be reported back to R&D for correction.

Test output: actual test report

XTOOL TMC Technology Management Committee

The company is customer-oriented, product-based, and service-oriented. It has fully introduced the IPD process and established a technical management committee with six branches:

embedded, system software, application software, electronic hardware, structural engineering, and technical management.

After the establishment of the Technical Management Committee, the company took the initiative to deploy advanced technologies and high-end products with a positive attitude towards development and innovation, promote the company's technological progress, improve product development efficiency, and ensure the effective implementation of the quality policy of quality first, customer first, technological innovation, and continuous improvement.

TMC

Embedded

System Software

Application

Electronic Hardware

Structural Engineering

Technical Management

BUSINESS SCOPE

XTOOL
Next Tool for Auto

13+

13 Years' Development

70+

Countries and Regions

210+

Qualified Distributors

500000+

End Users



HONORS AND CERTIFICATES

Cooperation with famous automobile brands



Internet of Vehicles and Internet of Things strategic cooperation

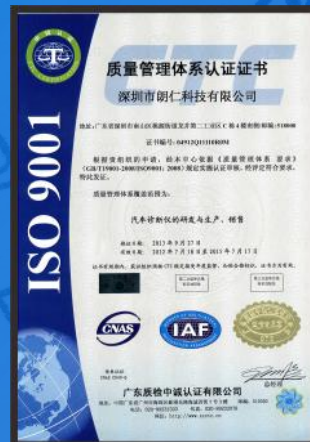


Competition special equipment and technical training support



HONORS & CERTIFICATES

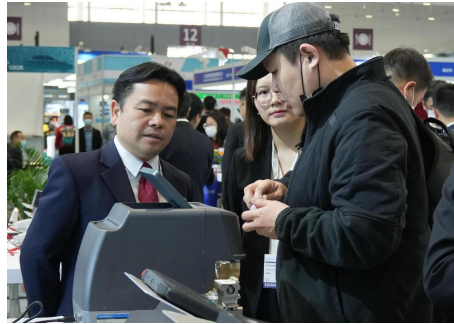
XTOOL
Next Tool for Auto



OUR PATENTS



OVERSEAS EXHIBITION



- Automechanika Frankfurt 2022
- EXPOMECAÑICAPERÚ 2022
- The 17th International Exhibition of The Automotive Industry Moscow INTERAUTO
- Automechanika Birmingham 2023
- The 12th Indonesia International Trade Show for AUTOMOTIVE INDUSTRY
- AAPEX SHOW 2023
- Automechanika Shanghai 2023
-

VISIT XTOOL

XTOOL
Next Tool for Auto





About Us



Products



Contacts

Products

DIAGNOSTIC TOOLS

XT100 Prime / XT90 /
XT80 / XT70 / H6PRO 3
/ H6E 2 / H6W 2 / N9EV
A30 / J2534



OBD2 Code Readers

AD20 / AD20 PRO



ADAS CALIBRATION

ASCT-1000



AUTO KEY PROGRAMMERS

X100PAD Elite /
IK618E / X100PADS
KC501 / ANYTOYO
SK1 / KS-1 /
X100PRO2 / M822



KEY CUTTING MACHINE

ANYCUT KNC91



TPMS SERVICE

TP150 / TS100





XT100 Prime

- 13.3-inch touchscreen tablet with Android 10.0 OS powered by an Octa-core processor (2.2GHz Quad + 1.8GHz Quad), 8+256GB large memory.
- Combined with the topology mapping diagnostic, the XT100 Prime offers the technicians step-by-step repair guidance and also enhances the adaption and coding function. The new VCI is compatible with J2534, RP1210, D-PDU, DoIP and CANFD.

42 Reset and Relearn Services

Compatible with J2534 & D-PDU Protocol

DIAGNOSTIC TOOLS

XTOOL
Next Tool for Auto



XT90

- 4-core 1.5Ghz CPU
- Android 10
- 9.7 inch, 1024x768P
- 4+128G memory
- Smooth & delay-free diagnostic experience
- Topology Mapping Diagnostic
- Advanced ECU Programming
- ADAS calibration



XT80

- 4-core 1.5Ghz CPU
- Android 10
- 8-inch, 1024x768P
- 4+64G memory
- Topology Mapping Diagnostic
- Offline ECU Coding & Programming
- ADAS calibration



XT70

- 4-core 1.5Ghz CPU
- Android 10
- 7-inch, 1024x600P
- 2+64G memory
- ECU configuration
- ADAS calibration



N9EV

- 9.7-inch high-resolution, responsive touchscreen display, 4-core processor with 128 GB storage.
- High-performance CPU with Android 10 OS and dual WIFI modules, bring you a smooth and hassle-free diagnostic experience.

OE-Level Diagnostic for Tesla

Battery Pack Detection for EVs

Off-vehicle Components Test





H6PRO 3

- 2.2GHz A73×4+1.8GHz A53×4 CPU
- Android 10
- 10.1-inch, 1920x1200P
- 8+128G memory
- Topology Mapping Diagnostic
- BMW Test Plan
- Online ECU Coding & Programming



H6W 2

- 4-core 1.5Ghz CPU
- Android 10
- 8-inch, 1024x768P
- 4+64G memory
- Topology Mapping Diagnostic
- Offline ECU Coding & Programming



H6E 2

- 4-core 1.5Ghz CPU
- Android 10
- 8-inch, 1024x768P
- 4+64G memory
- Topology Mapping Diagnostic
- Offline ECU Coding & Programming



A30

- Full systems wireless scan tool
- For personal users
- Supports 9 Languages



J2534

- Professional Programming Equipment
- Supports J2534 protocol

OBD2 Code Readers



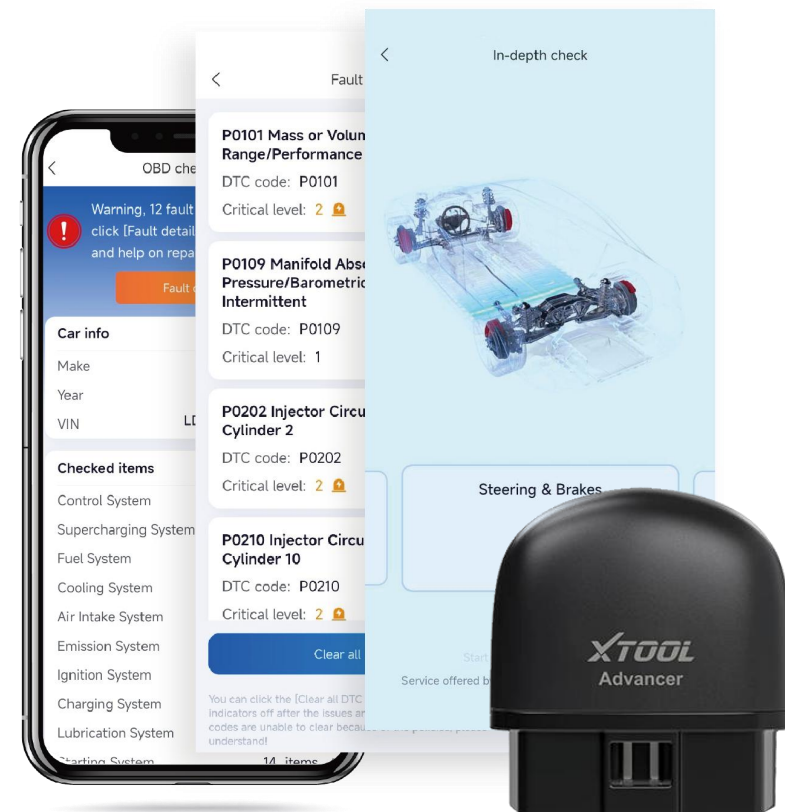
AD20

- Advancer AD20 is a Smart OBD Dongle with integrated diagnostic module and cloud services.
- Provides various functions like DTC scanning, Components tests, trip recording, driving skills monitoring, etc.



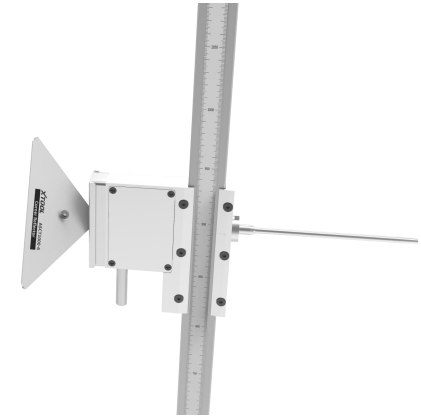
AD20 PRO

- Advancer AD20 Pro is a Smart OBD Dongle with integrated diagnostic module and cloud services.
- Connected via Bluetooth, controlled by smartphones.



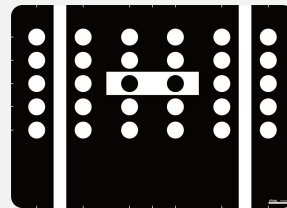
ADAS CALIBRATION

XTOOL
Next Tool for Auto

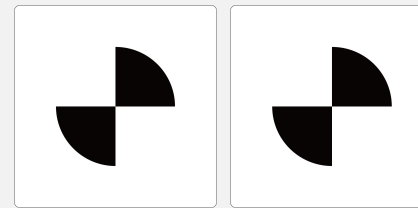


ASCT-1000

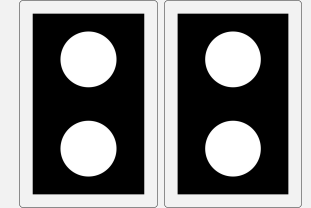
- ADAS, Advanced Driver Assistance Systems
- An electronic system that assists drivers in driving and parking.



VW/Audi/Porsche-LDW
CalibrationBoard



Mercedes-Benz Smart/ Renault
/Nissan/ Infinity - LDW
Calibration Board



With Doppler Calibrator
Installer For
VW/Audi/Porsche

100



X100 PAD Elite

- All the IMMO functions integrated.
- Customized UI for diagnostics & key programming. Provides you a better experience.
- 90%+ models are covered.

Supports all key lost & add key

PIN Code reading with EEPROM

Latest remote controller programming



AUTO KEY PROGRAMMERS

XTOOL
Next Tool for Auto



IK618E

- Compact and Capable.
- Brand New. From the Core.
- Utilized for All Models.



X100PADS

- Wide Coverage
- EEPROM Modifying
- Portable and Powerful
- OBD2 Universal Diagnosis
- Various Features



X100PRO 2

- Professional Key Programmer
- Supports mileage adjustment for various models of more than 20 brands
- Supports IMMO programming for more than 30 brands

AUTO KEY PROGRAMMERS



AnyToyo SK1

- Toyota Key Data Collector & Emulator
- Safest solution on Toyota /Lexus Key Programming



KC501

- Dealer Key Generator
- Mercedes-Benz IR Key
- Key Frequency & ID Reading



KS-1

- For Toyota / Lexus all key lost
- Wide range of models
- Can be reused



M822

- Supports all keys lost for Mercedes-Benz (FBS3) & Toyota(8A non-smart key)
- High-speed calculation & easy data collection for Mercedes
- Gets IMMO data by OBD or on bench for Toyotas

KEY CUTTING MACHINE

XTOOL
Next Tool for Auto



KNC91

- High Accuracy, High Speed, High Capability
- Vast Database for 90%+ Models, with key codes, cuts, etc.
- Easy to find missing cuts & to search for key profiles



TPMS SERVICE

XTOOL
Next Tool for Auto



TP150

- Provides TPMS Service for 98%+ of vehicles
- Shows relearn procedure & OEM sensor info on cars
- Checks sensors with 315/433MHz frequencies
- Programs up to 8 XTool TPMS sensors at once



TS100

- Replaces most 315/433MHz TPMS sensors
- OEM-level performance and much more affordable
- Durable for 3-5 years
- Clamp-in & Snap-in available



TS101

- All-in-one TPMS fixing solution for workshops
- 0~45° adjustable valve angle
- Compatible for performance tires with thinner walls
- OEM-level performance & durability



TS200

- NFC-programming by mobile apps
- Suitable for 315/433MHz TPMS sensor replacement
- Valves angle adjustable
- Checks relearn procedures & OEM sensor info on smartphones



About Us



Products



Contacts

Overseas Sales Center (China)

Tel: +86 755 21670995

Monday to Friday
09:00~18:30 (UTC/GMT+08:00)

Website: www.xtooltech.com

Email: marketing@xtooltech.com

Company address: 17&18/F, A2 Building, Creative City, Liuxian Avenue, Nanshan District, Shenzhen, China



Xtooltech

<https://www.facebook.com/Xtooltech>



XtoolTech2010

<https://twitter.com/XtoolTech2010>



Xtooltech CO.LTD

<https://www.linkedin.com/company/xtooltech-co-ltd/>



Shenzhen Xtooltech CO., LTD

<https://www.youtube.com/@ShenzhenXtooltechCOLTD>

XTOOL
Next Tool for Auto



Xtooltech USA, INC.

Tel: 909 376 7937

Monday to Friday
09:00~18:30

Website: www.xtooltech.us

Email: marketing@xtooltech.us

Company address: 10574 Acacia Street, Suite D4, Rancho
Cucamonga CA 91730



THANKS FOR YOUR TIME

Private and Confidential

This document contains information which is confidential and proprietary to the Shenzhen tooltech Intelligent Co. LTD. Any dissemination, distribution, copying, use of or reliance upon the confidential and proprietary information contained herein is unauthorized and strictly prohibited