



TECHNICAL CATALOGUE



SOCIETE TUNISIENNE DES INDUSTRIES DE PNEUMATIQUE

Tél. : (216) 71 230 400

Fax : (216) 71 236 888

Email : amine.dg@stip.com.tn

www.pneu-amine.com.tn



Certificat

Référentiel

ISO 14001:2015

Enregistré sous le n°

01 104 031899

Titulaire du certificat:



STIP
Société Tunisienne des Industries
de Pneumatiques
Centre Urbain Nord, Bd de la Terre
1003 Tunis-Cité El Khadhra
Tunisie

Domaine d'activité:

Développement, production et Commercialisation de
Pneumatiques.

Validité:

Par l'audit, la conformité aux exigences de la norme
ISO 14001:2015 a été démontrée.

Ce certificat est valable du 02.02.2022 jusqu'au 13.07.2024.
Certification initiale 2003

21.03.2022


TUV Rheinland Cert GmbH
Am Grauen Stein · 51105 Köln

© TÜV, TÜV* and TÜV are registered trademarks. Utilization and application requires prior approval.

www.tuv.com



Certificat

Référentiel

ISO 9001:2015

Enregistré sous le n°

01 100 80111

Titulaire du certificat:



STIP
Société Tunisienne des Industries
de Pneumatiques
Centre Urbain Nord, Bd de la Terre
1003 Tunis-Cité El Khadhra
Tunisie

Domaine d'activité:

Développement, production et commercialisation des
pneumatiques

Validité:

Par l'audit, la conformité aux exigences de la norme
ISO 9001:2015 a été démontrée.

Ce certificat est valable du 24.03.2022 jusqu'au 13.07.2024.
Certification initiale 1998

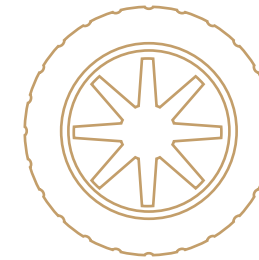
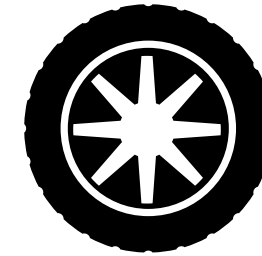
25.03.2022


TUV Rheinland Cert GmbH
Am Grauen Stein · 51105 Köln

© TÜV, TÜV* and TÜV are registered trademarks. Utilization and application requires prior approval.

www.tuv.com





Our POLITIC

Following the orientation of our country in liberation program which tends to establish market mechanism, commerce liberty and encourage private initiative, the “Société Tunisienne des Industries de Pneumatiques” is engaged in a politic of quality management, environment and security.

Aims / Purposes :

- Become competitive in price and quality on both local and foreign markets in order to face international competitors,
- Become capable to use and control the evolution of market techniques and improvement of products required by both local and foreign clients,
- Participate in the world combat for the perennity of the environment achievement, by developing and promoting adapted technologies for a cleaner production, without constrain our permanent wills

for better productivity and rentability and without influence on the social growing and progress,

- Protect our patrimony by following a progressing program in terms of security which offer to the whole staff the confidence, the stability and health and also respresent a reference for our clients and partners.

Principal objectives are :

- High quality level,
- Clear production without risks,
- Security and health guaranteed at all levels,
- Training and aware for all staff,
- Compliance of all the legal requirements, laws and standards,
- Continuous improvement in quality, environment and security.

TECHNICAL CHARACTERISTICS

SECTION WIDTH (mm)

Max section width of an inflated tyre without load.

OVERALL DIAMETER (mm)

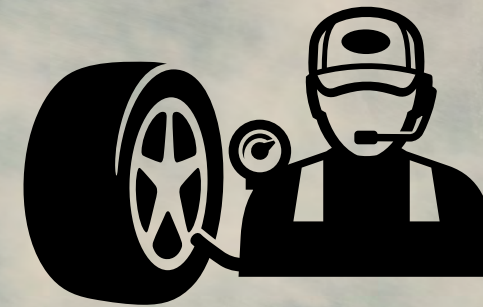
Max external diameter of an inflated tyre without load.

STATIC ON LOAD RADIUS (mm)

Static radius of an inflated and loaded tyre.

ROLLING CIRCUMFERENCE (mm)

Calculated value from the overall diameter.



TECHNICAL FEATURES AND TYRE READING



- 1- Manufacturer's name : STIP
- 2- The Brand : Amine
- 3- Tread type : Atlas
- 4- Nominal section width : 175
- 5- Nominal Aspect Ratio : (H/S=0,7) 70
- 6- Construction code : R
- 7- Nominal Rim : 13
- 8- Load index : 82
- 9- Speed symbol : T
- 10- ECE type approval mark and number : ECE
- 11- Tubeless marking : Tubeless
- 12- Tyre construction and load/ Pressure: details
- 13- North American department of transportation compliance symbol and identification number
- 14- Country of manufacture : Made in Tunisia

Passenger Car Tyres

P4 RANGE



Description

PCR tyre with speed capacity of 180 km/h (speed code S), available in 80's series, specially designed for standard car fitment. It's ideal for small and medium sized cars. Amine P4 meets the requirements of car drivers in terms of safety, good quality and high mileage.



Technical Characteristics

Amine P4 is characterized by ribbed tread pattern with three longitudinal grooves combined with cross grooves to ensure good grip, excellent precision in handling and high mileage.

				Pressure for max load		Dimensional Specification				Max load	Rim
Tire size	Tread pattern	Speed Symbol	Index Load			Section width	Overall diameter	Loaded radius	Rolling circumference	By Axle	Recommended
				BAR	Psi	mm	mm	mm	mm	Kg	Inch
135 R 13 TL	P4	S	69	2.5	36	140	549	256	1675	650	3.5 J
135 R 15 TL	P4	S	72	2.5	36	140	600	281	1830	710	3.5 J
145 R 13 TL	P4	S	74	2.5	36	152	566	263	1726	750	4 J
145 R 14 TL	P4	S	76	2.5	36	152	591	276	1804	800	4 J
155 R 13 TL	P4	S	78	2.5	36	161	578	268	1763	850	4.5 J
155 R 14 TL	P4	S	80	2.5	36	161	603	281	1840	900	4.5 J
165 R 13 TL	P4	S	82	2.5	36	174	596	275	1818	950	4.5 J
165 R 15 TL	P4	S	86	2.5	36	174	647	301	1973	1060	4.5 J
175 R 14 TL	P4	S	88	2.5	36	182	633	293	1932	1120	5 J
185 R 14 TL	P4	S	90	2.5	36	188	651	300	1987	1200	5 J



Passenger Car Tyres

ATLAS RANGE



Description
Car tyres Use Tread pattern Tubeless radial tyre withe speed capacity of 190 km/h. The Atlas range is designed with thick longitudinal grooves and shaped ribs to guarantee an acoustic comfort with the steadiness on wet roads. Its profile allows superior stability and perfect grip.



Technical Characteristics

The ATLAS range confers outstanding performance in terms of :

- Road holding and braking efficiency: the low cross-section means greater stability at constant speed, in acceleration and deceleration.
- Wet grip: the tread pattern and compound one are planned to improve water drainage.
- Mileage: the greater stability reduces friction in the contact area which is one of the main factors in tread wear.

				Pressure for max load		Dimensional Specification				Max Load	Rim
Tire size	Tread pattern	Speed Symbol	Load Index			Section width	Overall diameter	Loaded radius	Rolling circumference	By Axle	Recommended
						BAR	Psi	mm	mm	mm	mm
145 / 70 R 13 TL	ATLAS	T	71	3.0	44	144	539	252	1644	690	4,5 J
155 / 70 R 13 TL	ATLAS	T	75	3.0	44	163	548	255	1671	774	4,5 J
165 / 70 R 13 TL	ATLAS	T	79	3.0	44	179	566	263	1726	874	5 J
165 / 70 R 14 TL	ATLAS	T	81	3.0	44	179	591	276	1804	924	5 J
175 / 70 R 13 TL	ATLAS	T	82	3.0	44	190	580	269	1769	950	5 J
175 / 70 R 14 TL	ATLAS	T	84	3.0	44	190	602	280	1836	1000	5 J



Passenger Car Tyres

SCV RANGE



Description SCV

SCV tyre is the optimum balance between security, confort and performance for medium to high-powered cars. It ensures good control in both dry and wet conditions assuring a comfortable driving experience.



Technical Characteristics

Its main feature is the profile of the tread, which provides high levels of :

- Road holding : the sidewall gives better lateral stability and faster steering response; the wider contact area allows shorter braking distances; the tread compound and pattern have been specifically chosen for better grip, even on wet surfaces.
- Acoustical comfort : the differentiated structure absorbs all road irregularities; the tread pattern and special internal profile prevent rumbling; sidewall stability reduces irregular rotations.
- Epecially at high speeds on exacting roads, the tire's very limited deformability reduces slip in the contact area.

						Dimensional Specifications				Max load	Rim
Tire size	Tread pattern	Speed Symbol	Load Index	Pressure for max load		Section width	Overall diameter	Loaded radius	Rolling circumference	By Axle	Recommended
				BAR	Psi						
165 / 65 R 13 TL	SCV	H	77	3.0	44	170	546	255	1665	824	5 J
175 / 65 R 14 TL	SCV	H	82	3.0	44	181	586	273	1787	950	5 J
185 / 65 R 14 TL	SCV	H	86	3.0	44	190	598	278	1824	1060	5.5 J
185 / 65 R 15 TL	SCV	H	88	3.0	44	190	623	291	1901	1120	5.5 J
195 / 65 R 14 TL	SCV	H	89	3.0	44	211	612	284	1865	1160	6 J
195 / 65 R 15 TL	SCV	H	91	3.0	44	211	637	297	1943	1230	6 J
205 / 65 R 15 TL	SCV	H	94	3.0	44	220	649	302	1979	1340	6 J
185 / 70 R 13 TL	SCV	H	86	3.0	44	194	594	274	1810	1060	5.5 J
185 / 70 R 14 TL	SCV	H	88	3.0	44	194	619	287	1888	1120	5.5 J
195 / 70 R 14 TL	SCV	H	91	3.0	44	204	634	293	1934	1230	6 J

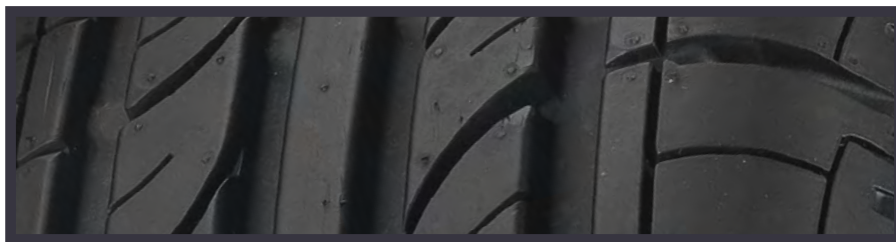
Passenger Car Tyres

CORONA RANGE



Description

The CORONA tire is an all-season passenger tire that offers high performance in grip and dry and wet-floor braking.



Technical characteristics

Tread Pattern:

The symmetrical tread design features a continuous center strip to provide directional stability and maneuverability even at high speeds.

The side ribs with curved notches provide optimized grip with the road and strong braking.

The architecture of the blocks ensures the attenuation of rolling noise.

The 4 large longitudinal grooves ensure the rapid evacuation of water.

The oblique lateral grooves ensure the channeling of the excess water towards the wider grooves.

This combination of longitudinal and lateral grooves ensures a very good drainage of water even at high speed.

Tire size	Tread pattern	Speed Symbol	Load Index	Pressure for max load		Dimensional Specifications				Max load	Rim
						Section width	Overall diameter	Loaded radius	Rolling circumference	By Axle	Recommended
				Bar	Psi	mm	mm	mm	mm	Kg	Inch
195/50R15 TL	Corona	V	82	3.5	51	195	576	271	1757	950	6.00 J
195/55R16 TL	Corona	V	82	3.5	51	195	576	271	1757	950	6.00 J
175/65R15 TL	Corona	H	84	3.0	44	181	611	286	1865	1000	5.00 J
185/65R15 TL	Corona	H	84	3.0	44	181	611	286	1865	1000	5.00 J
185/60R15 TL	Corona	H	84	3.0	44	181	611	286	1865	1000	5.00 J
205/60R16 TL	Corona	V	82	3.5	51	195	576	271	1757	950	6.00 J

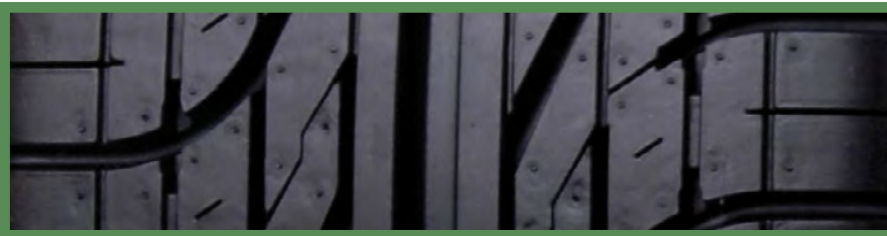
Passenger Car Tyres

PALMA RANGE



Description

The PALMA tire is synonymous with power, energy and fun. This tire provides proper grip, stability and good handling, a quieter and more comfortable ride and good mileage. This tire has a wave-shaped design with a central groove for excellent handling, helical side grooves that allow complete water evacuation and make the tire resistant to aquaplaning.



Technical characteristics

Tread Pattern:

The symmetrical tread design features a continuous center strip to provide directional stability and maneuverability even at high speeds.

The side ribs with curved notches provide optimized grip with the road and strong braking.

The architecture of the blocks ensures the attenuation of rolling noise.

The 4 large longitudinal grooves ensure the rapid evacuation of water.

The oblique lateral grooves ensure the channeling of the excess water towards the wider grooves.

This combination of longitudinal and lateral grooves ensures a very good drainage of water even at high speed.

Tire size	Tread pattern	Speed Symbol	Load Index	Pressure for max load		Dimensional Specifications				Max load	Rim
				BAR	Psi	Section width	Overall diameter	Loaded radius	Rolling circumference	By Axle	Recommended
						mm	mm	mm	mm	Kg	Inch
205/55R16 TL	Palma	V	91	3	44	214	634	298	1934	1230	6.50 J
215/55R16 TL	Palma	V	97	3.4	50	220	642	301	1958	1460	7.00 J



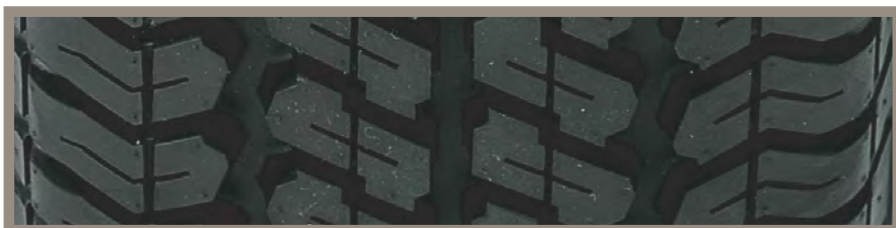
Passenger Car Tyres

SAFARI+ RANGE



Description

A reinforced 4x4 tire with a high load index designed for a mixed operation On/Off road. Tire offering good performance in all weather and all seasons thanks to its function Mud + Snow.



Technical characteristics

- **Tread Pattern:** symmetrical pattern with deep sculpture with three longitudinal grooves to evacuate water and mud quickly and wide and lined ribs to provide better traction and good grip in all roads.
- **Tread Compound:** the new tread compound gives it better resistance to tearing in off-road conditions.

				Pressure for max load		Dimensional Specifications				Max load	Rim
Tire size	Tread pattern	Speed Symbol	Index Load			Section width	Overall diameter	Loaded radius	Rolling circumference	By Axle	Recommended
				Bar	Psi	mm	mm	mm	mm	Kg	Inch
205/80R16 XL	SAFARI+	104	T	3.4	50	205	734	339	2239	1800	5.50 J



Light Truck tyres

COBRA RANGE



Description

New profile for all-terrain vehicle, with a design of the tread has large lugs arranged at an angle in the middle for better hold road and two longitudinal grooves on the compound sides of linked paving stones for better water evacuation.



Advantages

- The COBRA tyre guarantees the best performance on any road thanks to its robustness and the quality of the mixtures that compose it.
- It also benefits from an M+S (Mud and Snow) marking.

				Pression pour charge max		Caractéristique Dimensionnelles				Charge Max	Largeur de la Jante
Dimension	BDR	Indice Vitesse	Indice Charge			Largeur Section	Diamètre Extérieur	Rayon Sous Charge	Circonférence De Roulement	Par Essieu	Conseillée
				Bar	Psi	mm	mm	mm	mm	Simple Kg	Pouce
245/70R16 TL	COBRA	T	111	3.4	50	248	750	336	2288	2180	7 J
235/70R16 TL	COBRA	T	109	3.4	50	240	736	332	2245	2060	7 J

Light truck tyres

DV82 RANGE

DRIVER RANGE

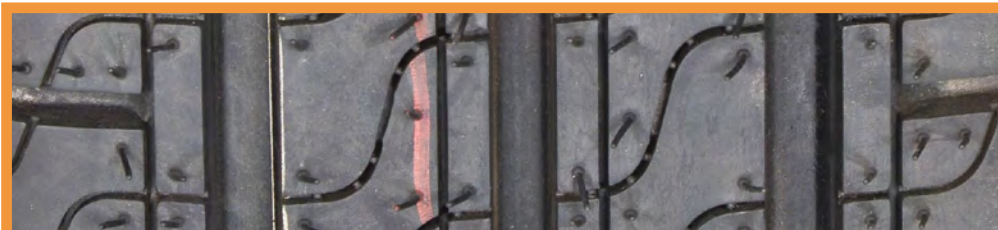


Description

Radial tyre developed to meet first order levels of performances. Its good handling characteristics combined with high mileage advantage allow it to be selected as a perfect serial equipment for modern commercial vehicles.



DV82



DRIVER

Advantages

- High mileage and wear regularity.
- Re-treading possibility and reliability.
- Sidewalls robustly reinforced to resist shocks and cuts
- Safe road holding in braking and on both dry and wet surfaces.
- Comfort and quiet running.

Tire size					Pressure for max load		Dimensional Specifications				Max load		Rim
							Section width	Overall diameter	Loaded radius	Rolling circumference	By Axle		Recommended
					Bar	Psi	mm	mm	mm	mm	Simple Kg	Twinned Kg	Inch
185R14C TL	DV82	6	N	99/97	3.8	55	195	649	299	1979	1550	2920	5.5 J
185R14C TL	DV82	8	N	102/100	4.8	70	195	649	299	1979	1700	3200	5.5 J
185R15C TT	DV82	8	N	103/102	4.8	70	188	668	310	2037	1750	3400	5.5 J
185R15C TL	DV82	8	N	103/102	4.8	70	188	668	310	2037	1750	3400	5.5 J
195R14C TL	DV82	8	N	106/104	4.8	70	205	665	306	2028	1900	3600	5.5 J
195R15C TL	DV82	8	R	106/104	4.8	70	205	690	319	2105	1900	3600	5.5 J
205/75 R14C TL	DV82	8	N	109/107	4.8	70	210	665	306	2028	2060	3900	5.5 J
225/75 R16C TL	DV82	10	R	118/116	5.5	80	223	744	343	2269	2640	5000	6 J
195/70 R15C TL	DV82	8	R	104/102	4.8	70	202	655	304	1998	1800	3400	6 J
215/70 R15C TL	DV82	8	R	109/107	4.8	70	221	683	316	2083	2060	3900	6.5 J
225/70 R15C TL	DV82	8	R	112/110	4.8	70	228	697	322	2126	2240	4240	6.5 J
195R15C TL	Driver	8	S	106/104	4.8	70	196	690	314	2091	1900	3600	5.5 J



Light truck tyres

PRIMA RANGE



Description

The PRIMA tire is a light truck tire for vehicles with a high load capacity, suitable for all courses with:

- New symmetrical tread design with two continuous center strips with three longitudinal grooves to ensure good handling, excellent braking stability, consistent wear and quiet rolling.
- New profile geometry for optimized longevity
- Reinforced structure for high performance in terms of load capacity.



Advantages

- High mileage and wear regularity.
- Re-treading possibility and reliability.
- Sidewalls robustly reinforced to resist shocks and cuts
- Safe road holding in braking and on both dry and wet surfaces.
- Comfort and quiet running.

					Pressure for max load		Dimensional Specifications				Max load		Rim
Tyre size	BDR	PR	Speed Symbol	Load Index			Section width	Overall diameter	Loaded radius	Rolling circumference	By Axle		Advised
							Bar	Psi	mm	mm	mm	mm	Simple Kg
195/75 R16CTL	Prima	8	R	107/105	4.8	70	200	698	324	2129	1950	3700	5.5 J
215/75 R16CTL	Prima	8	R	113/111	4.8	70	216	728	337	2220	2300	4360	6.0 J



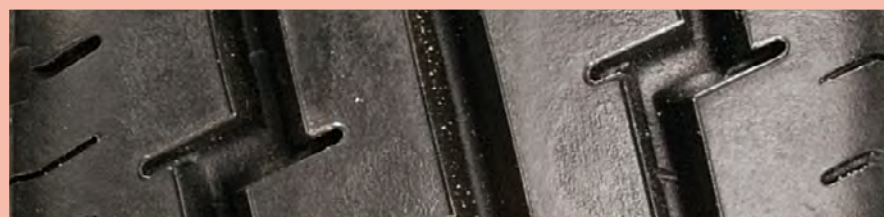
Light truck tyres

SN66 RANGE



Description

Radial tyre for every transport requirement and medium/ long circuit. Suitable also for mini-buses. Suitable to trucks working on mixed road conditions. These tyres must be used with tube.



Technical Characteristics

- The tread pattern has many advantages of road holding on dry and wet surfaces, as well of high mileage.
- The tread compound has a special characteristic allowing the impact stress of the light mixed asphalted and unpaved roads.
- The sidewalls have been reinforced to resist to shocks and cuts; special kerbing ribs protect them from lateral shocks and frictions. Use Tread pattern Radial tyre for all transport requirement on medium/ long circuits. Suitable for urban and suburban buses.

Characteristics					Pressure for max load		Dimensional Specifications				Max Load		Rim
Tire size	Tread pattern	PR	Speed Symbol	Load index			Section width	Overall diameter	Loaded radius	Rolling circumference	By Axle		Recommended
							Bar	Psi	mm	mm	mm	mm	Simple Kg
6.50R16C TT/TL	SN66	10	L	108/107	5.8	85	178	742	342	2263	2000	3900	4.5 E
7.00R16C TT/TL	SN66	12	L	117/116	6.2	90	181	782	359	2385	2570	5000	5.5 F
7.00R16C TT/TL	SN66	12	N	117/116	6.2	90	181	782	359	2385	2570	5000	5.5 F
7.50R16C TT/TL	SN66	12	L	121/120	6.5	95	205	796	365	2428	2900	5600	6 G

Advantages

- High mileage and wear regularity.
- Re-treading possibility and reliability.
- Sidewalls robustly reinforced to resist shocks and cuts.
- Safe road holding in braking and on both dry and wet surfaces.
- Comfort and quiet running.

Heavy duty truck tyres

SN66 RANGE



Description

Suitable for urban and suburban buses. Suited to fit trucks working on mixed road conditions. These tyres must be used with tube.



Technical Characteristics

- The tread pattern has many advantages of road holding on dry and wet surfaces, as well of high mileage.
- The tread compound has a special characteristic allowing the impact stress of the light mixed asphalted and unpaved roads.
- The sidewalls have been reinforced to resist to shocks and cuts; special kerbing ribs protect them from lateral shocks and frictions.Use Tread pattern Radial tyre for all transport requirement on medium/ long circuits.

Characteristics					Pressure for max load		Dimensional Specifications				Max load		Rim
Tire size	Tread pattern	PR	Speed Symbol	Load index			Section width	Overall diameter	Loaded radius	Rolling circumference	By Axle		Recommended
					Bar	Psi	mm	mm	mm	mm	Simple Kg	Dual Kg	Inch
8.25R20 TT	SN66	14	K	133/131	7.6	110	220	959	441	2925	4120	7800	6.5
9.00R20 TT	SN66	14	K	140/137	7.9	115	246	1018	466	3105	5000	9200	7
10.00R20 TT	SN66	16	K	146/143	7.9	115	261	1046	478	3190	6000	10900	7.5
11.00R20 TT	SN66	16	K	149/145	7.9	115	276	1079	491	3289	6500	11600	8
12.00R20 TT	SN66	18	K	154/149	8.3	120	294	1114	506	3398	7500	13000	8.5

Advantages

- High mileage and wear regularity.
- Re-treading possibility and reliability.
- Sidewalls robustly reinforced to resist shocks and cuts.
- Safe road holding in braking and on both dry and wet surfaces.
- Comfort and quiet running.

Heavy duty truck tyres

ORIENT RANGE



Description

Suitable for urban and suburban buses. Suited to fit trucks working on mixed road conditions. These tyres must be used with tube.



Technical Characteristics

- The tread pattern has many advantages of road holding on dry and wet surfaces, as well of high mileage.
- The tread compound has a special characteristic allowing the impact stress of the light mixed asphalted and unpaved roads.
- The sidewalls have been reinforced to resist to shocks and cuts; special kerbing ribs protect them from lateral shocks and frictions. Use Tread pattern Radial tyre for all transport requirement on medium/ long circuits.

Characteristics				Pressure for max load		Dimensional Specifications				Max load		Rim
Tire size	Tread pattern	Speed Symbol	Load index			Section width	Overall diameter	Loaded radius	Rolling circumference	By Axle		Recommended
				Bar	Psi	mm	mm	mm	mm	Simple Kg	Dual Kg	Inch
215/75R17.5 TL	ORIENT	M	128/126	7.5	109	217	774	362	2361	3600	6800	6.0
225/75R17.5 TL	ORIENT	M	129/127	7.5	109	225	786	367	2397	3700	7000	6.75

265/70R17.5 *

285/70R17.5 *

8,5 R17.5 *

9,5 R17.5 *

Advantages

- High mileage and wear regularity.
- Re-treading possibility and reliability.
- Sidewalls robustly reinforced to resist shocks and cuts.
- Safe road holding in braking and on both dry and wet surfaces.
- Comfort and quiet running.

* tyre under test, not yet industrialized.

Industrial use

COMPACTEUR RANGE



Description

Industrial tyre developed exclusively for tyre compactors also called loaders on tyres for, among other things, port uses.



Technical Characteristics

- The tread compound provides resistance to stripping and shredding.
- The tread pattern design, with its central strong rib, assures high resistance to shredding and nibbling.
- The accentuated kerbing ribs on the sidewall circumference protect casing from accidental damages.

CARACTERISTIQUES TECHNICO-COMMERCIALES																
CARACTERISTIQUES						MAX LOAD		Max Pressure		DIMENSIONS				CHARGE MAX		JANTE
Dimension	BDR	TYPE	Indice	Indice	Single	SINGLE				S	OD	Rs	Cr	PAR ESSIEU		larg.
			vitesse	charge	Point	Kg	lbs	Kpa	psi	mm	mm	mm	mm	single	dual	inch
11.00 R20	COMPACTEUR	TT	A2	165	157 A3	5150	11350	700	102	295	1072	4494	3270	10300	-	8.0

Advantages

- Characterized by a smooth and solid tread made from a mixture guaranteeing high impact resistance and driving comfort in service.
- Its radial carcass, made entirely of steel, ensures optimal performance in terms of charging and long life.

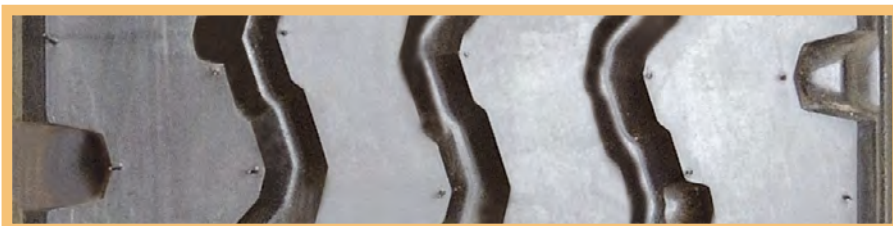
All Steel truck tyres

OASIS RANGE



Description

Truck tire for general use on steer axles of all purpose trucks. Ensures good wet grip combined with very high mileage, besides excellent traction. Permits considerable fuel saving. Used also on buses for urban and suburban transportation.

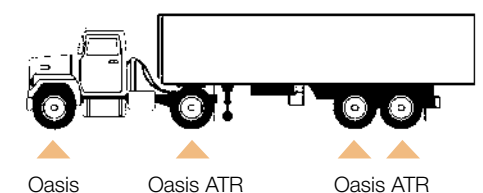
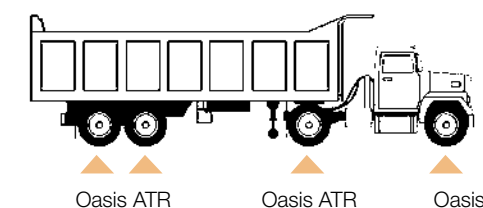


Carcass : mono ply steel

Belts : three steel strips and two lateral bands at zero degree in the shoulder area.

Tread : ribbed, with three and four grooves of equal width and transversal cuts in the shoulder area.

Characteristics						Pressure for max load		Dimensional Specifications				Max load		Rim
Tire size	Tread pattern	PR	Speed Symbol	Load Index	Single Point			Section width	Overall diameter	Loaded radius	Rolling circumference	By Axle		Recommended
						Bar	Psi	mm	mm	mm	mm	Simple Kg	Dual Kg	Inch
10 R 22.5 TL	OASIS	-	L	144/142	-	8.25	120	246	1017	471	3102	5600	10600	7.5
12.00R20 TT	OASIS	18	K	154/150	-	8.5	123	310	1121	509	3419	7500	13400	8.5
12.00R24 TT	OASIS	20	K	160/156	-	8.9	130	304	1220	558	3721	9000	16000	8.5
13R22.5 TL	OASIS	-	K	156/150	154/150L	9.0	131	306	1119	513	3413	8000	13400	9.75
315/80 R22.5 TL	OASIS	-	K	156/150	-	8.5	123	314	1077	496	3285	8000	13400	9
385/65 R22.5 TL	OASIS	-	K	160	158L	9.0	130	377	1069	492	3260	9000	-	11.75



All Steel truck tyres

CARTAGO RANGE



Description

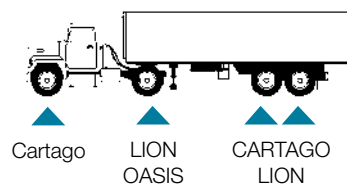
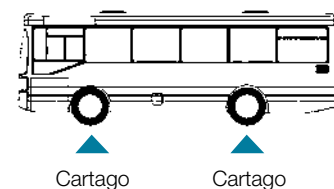
All steel truck tyre used on motoways and major road, ideal for steer axle on motorway transport.



Carcass : mono ply steel

Belts : three steel strips and two lateral bands at zero degree in the shoulder area.

Tread : ribbed, with four grooves of equal width, provides excellent comfort and grip even on slippery surfaces.



Characteristics						Pressure for max load		Dimensional Specifications				Max load		Rim
Tire size	Tread pattern	PR	Speed Symbol	Index Load	Single Point			Section width	Overall diameter	Loaded radius	Rolling circumference	By Axle		Recommended
						Bar	Psi	mm	mm	mm	mm	Simple Kg	Dual Kg	Inch
10 R 22.5 TL	CAR-TAGO	-	M	144/142	-	8.25	120	246	1014	469	3093	5600	10600	7.5
11R22.5 TL	CAR-TAGO	-	M	148/145	-	8.5	123	268	1047	483	3193	6300	11600	8.25
12R22.5 TL	CAR-TAGO	-	M	152/148	-	8.5	123	289	1081	497	3297	7100	12600	9
13R22.5 TL	CAR-TAGO	-	M	154/150	156/150L	9.0	131	306	1115	511	3401	8000	13400	9.75
295/80 R22.5 TL	CAR-TAGO	-	M	152/148	-	8.5	123	298	1052	485	3209	7100	12600	9
315/80 R22.5 TL	CAR-TAGO	-	M	154/150	156/150L	8.5	123	314	1075	495	3279	8000	13400	9
12.00 R20 TT	CAR-TAGO	18	L	154/150	-	8.5	123	310	1116	507	3404	7500	13400	8.5

All Steel truck tyres

LION RANGE



Description

Used for medium severity asphalted roads with strong traction designed for drive axle.
It's suitable for use on trailers on and off roads.

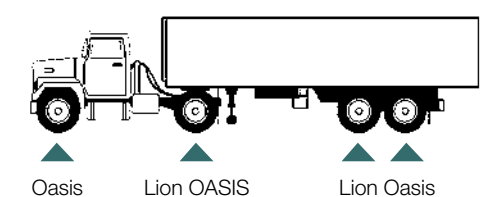
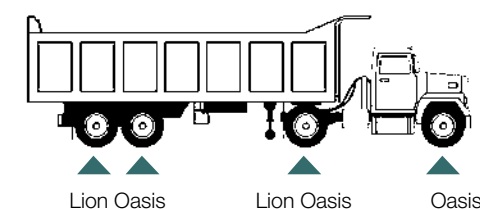


Carcass : mono ply steel

Belts : three steel strips and two lateral bands at zero degree in the shoulder area.

Tread : with large blocks able to ensure good traction even on snow-covered or muddy roads.

Characteristics					Pressure for max load		Dimensional Specifications				Max load By Axle		Rim
Tire size	Tread pattern	Speed Symbol	Index Load	Single Point			Section width	Overall diameter	Loaded radius	Rolling circumference			Recommended
					Bar	Psi	mm	mm	mm	mm	Simple Kg	Dual Kg	Inch
11R 22,5	Lion	M	148/145	-	8,5	123	268	1054	486	3215	6300	11600	8.25
12R 22,5	Lion	M	152/148	-	8,5	123	289	1088	500	3318	7100	12600	9.0
13R 22.5	Lion	M	154/150	156/150L	9,0	131	306	1122	514	3422	8000	13400	9.75
295/80 R 22,5	Lion	M	152/148	-	8,5	123	298	1059	488	3230	7100	12600	9.0
315/80 R 22,5	Lion	M	154/150	156/150L	8,5	123	314	1084	498	3306	8000	13400	9.0
315/70 R 22,5	Lion	M	152/148	-	8,5	123	298	1059	488	3230	7100	12600	9.0



All Steel truck tyres

ATR RANGE



Description

Radial tyre intended for the driving axles of trucks running on mixed courses and construction sites. It offers the best performance for the most severe uses and high traction power in quarries and stony terrains.

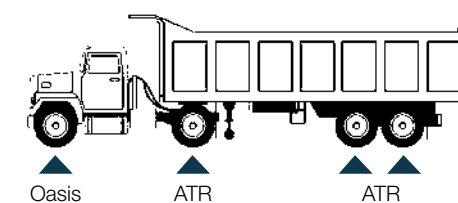


Characteristics				Pressure for max load		Dimensional Specifications				Max load		Rim
Tire size	Tread pattern	Speed Symbol	Load index			Section width	Overall diameter	Loaded radius	Rolling circumference	By Axle		Recommended
				Bar	Psi	mm	mm	mm	mm	Simple Kg	Dual Kg	Inch
13R22.5 TL	ATR	K	156/150	9.0	131	306	1121	514	3419	8000	13400	9.75

Carcass: one steel ply.

Belts: three steel belts and two zero degree strips in the shoulder area.

Tread Pattern: The big-block design is able to provide high traction in quarries and stony ground.





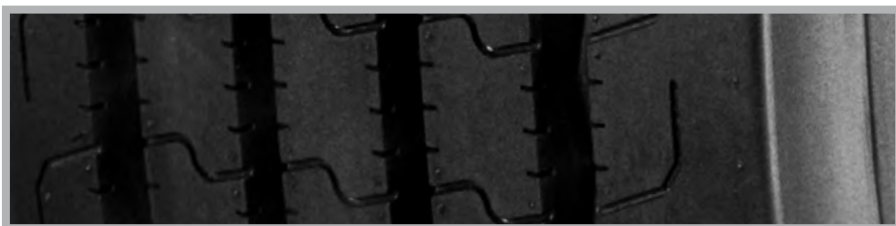
All Steel truck tyres

AFRICA RANGE



Description

All steel truck tyre used on motoways and major road, ideal for steer axle on motorway transport.



Technical Characteristics

- The tread pattern has many advantages of road holding on dry and wet surfaces, as well of high mileage.
- The tread compound has a special characteristic allowing the impact stress of the light mixed asphalted and unpaved roads.
- The sidewalls have been reinforced to resist to shocks and cuts; special kerbing ribs protect them from lateral shocks and frictions. Use Tread pattern Radial tyre for all transport requirement on medium/ long circuits.

					Pression pour charge max		Caracteristique Dimensionnelles				Charge Max par essieu		Largeur de la Jante
Dimension	BDR	Indice Vitesse	Indice Charge	Single Point			Largeur Section	Diametre Extérieur	Rayon Sous Charge	Circonférence De Roulement	Simple	Jumelé	
					Bar	Psi	mm	mm	mm	mm	Kg	Kg	
315/70R22,5	AFRICA	M	154/150	156/150L	9	131	314	1019	470	3093	8000	13400	9.0

Advantages

Carcass : mono ply steel

Belts : three steel strips and two lateral bands at zero degree in the shoulder area.

Tread : ribbed, with four grooves of equal width, provides excellent comfort and grip even on slippery surfaces.



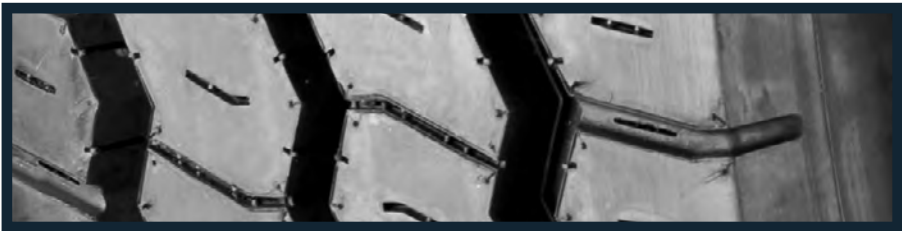
Bus tyre

MEDINA RANGE



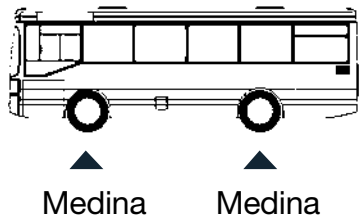
Description

Radial tire intended for all axles of buses used for urban and interurban transport. Provides a very good handling, a high mileage performance and excellent traction.



Carcass: one steel ply.

Belts: three steel belts and two zero degree strips in the shoulder area.



Characteristics				Pressure for max load		Dimensional Specifications				Max load		Rim
Tire size	Tread pattern	Speed Symbol	Load index			Section width	Overall diameter	Loaded radius	Rolling circumference	By Axle		Recommended
				Bar	Psi	mm	mm	mm	mm	Simple Kg	Dual Kg	Inch
275/70R 22,5	Medina	J	148/145	9.0	130	285	967	450	2949	6300	11600	8.25

Tread Pattern:

- Sculpted with three diversified geometry channels between the center and the shoulder to avoid the retention of chippings.
- A deeper carving depth and only three longitudinal channels provide excellent mileage performance. The two central ribs of the tread are laminated to ensure excellent traction even in the most difficult conditions (wet and slippery roadway, etc.)

The Sidewalls:

Have a reinforcement arranged in three cords to guarantee a better protection against shocks and lateral friction.

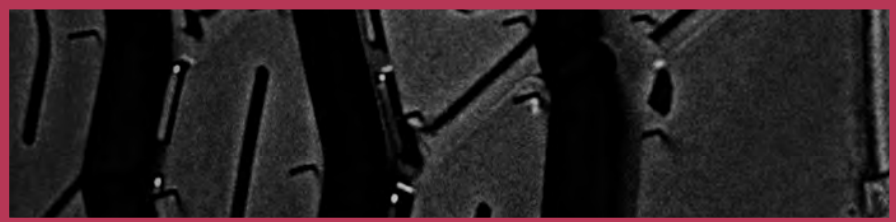


All Steel truck tyres

CARRIÈRE MINE RANGE



TR



D



Description

Radial tire intended for the driving axles of trucks running on mixed courses and construction sites. It offers the best performance for the most severe uses and high traction power in quarries and stony terrains.

CARACTERISTIQUES TECHNIQUE-COMMERCIALES

CARACTERISTIQUES						MAX LOAD				Max		DIMENSIONS				CHARGE MAX		JANTE
Dimension	BDR	TYPE	LR	Indice vitesse	Indice charge	SINGLE		DUAL		Pressure		S	OD	Rs	Cr	PAR ESSIEU		larg.
						Kg	lbs	Kg	lbs	Kpa	psi	mm	mm	mm	mm	single	dual	inch
315/80R22,5	Carrière Mine D	TL	L	K	156/150	4000	8820	3350	7390	900	130	314	1088	505	3318	8000	13400	9,00
315/80R22,5	Carrière Mine TR	TL	L	K	156/150	4000	8820	3350	7390	850	123	314	1078	501	3286	8000	13400	9,00

Tread Pattern:

- Sculpted with three diversified geometry channels between the center and the shoulder to avoid the retention of chippings.
- A deeper carving depth and only three longitudinal channels provide excellent mileage performance. The two central ribs of the tread are laminated to ensure excellent traction even in the most difficult conditions (wet and slippery roadway, etc.)

The Sidewalls:

Have a reinforcement arranged in three cords to guarantee a better protection against shocks and lateral friction.



Light truck tyres

SABLE RANGE



Use

Conventional tire intended for mixed use in hard or sandy ground.



Tyre size Designation							Max load		Inflation Pressure For	Rim Width
			Characteristics				Per axle		Max load	Recommended
Tire size	PR	Index speed	Section width	Overall diameter	Loaded radius	Rolling circumference	Simple	Dual		
			mm	mm	mm	mm	Kg	Kg	Bar	Inch
7.50x16	12	J	193	816	395	2621	2900	5600	6.50	6

Advantages

The shape, the height and the disposition of the paving blocks of the tread give to the tire good traction, grip and good braking. It offers a rational consumption of fuel due mainly to the low percentage of noise produced by the contact with the pavement texture.



Front tractor

FARM RANGE



Description

The particular tread pattern makes this tyre suitable for use on field work and road transport. These tyres must be used on the tube type.



Advantages

The robust carcass and the special tread pattern ensure high level hourly yield under any operating and transport conditions.

Tyre size Designation									
Tire size	PR	Index speed	Characteristics				Max load	Inflation Pressure For	Rim Width
			Section width	Overall Diameter	Loaded radius	Rolling circumference	Par Pneu	Max load	Recommended
			mm	mm	mm	mm	Kg	Bar	Inch
6.00 X 16 Farm 1	8	A6	165	735	344	2241	670	4.5	4.5E
7.50 X 16 Farm 1	8	A6	195	805	375	2455	875	3.7	5.5F
7.50 X 16 Farm 10	8	A6	195	805	361	2455	875	3.7	5.5E
7.50 X 16 Farm 100	8	A6	201	805	369	2455	875	3.7	5.5F
7.00 X 16 Farm 150	4	A6	183	778	-	-	650	2.5	5.0F
9.00 X 16 Farm 2*	8	A6	234	855	-	-	1090	3.1	4.5E
7.50 X 18 Farm 2	8	A6	203	860	401	2499	950	3.7	5.5F
7.50 X 18 Farm 150	6\8	A6	202	860	392	2520	825\950	2.8\3.7	5.5F
6.00 X 19 Farm 2	6	A6	165	814	372	2482	650	3.3	4.5E
6.00 X 19 Farm 2	8	A6	165	814	384	2482	765	3.3	4.5E
6.50 X 20 Farm 1	8	A6	175	865	404	2638	885	3.7	4.5E
7.50 X 20 Farm 1	8	A6	205	915	452	2790	1030	3.4	5.5F

Rear tractor

AGRI 21 RANGE

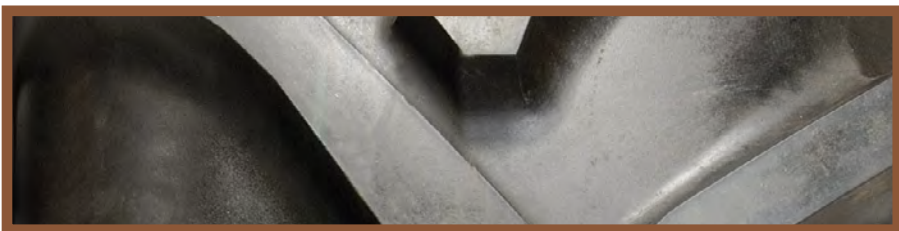
TRACTOR RANGE

S.T.T & S.T.C RANGE



Description

Tread bar offer high grip.
This structure makes the tyre particularly suitable for all types of hard work on wet, heavy soils of mud clay and sandy nature.



Technical Characteristics

The pattern of the grooves offers the possibility for more ample local movements and this facilitates the ejection of material and gives the tyre good self –cleaning attributes.

Advantages

The high traction of the tyres allows the tractor to be fully exploited and ensures good mileage and saving in fuel consumption.
Due to the exceptional rib height, the tractor may be efficiently used even under bad weather conditions on very wet soil, with high mileage and high level hourly yield.

Tire size	PR	INDEX SPEED	Characteristics				Max load	Inflation Pressure For	Rim Width
			Section width	Overall diameter	Loaded radius	Rolling circumference	Per axle	Max load	Recommended
			mm	mm	mm	mm	Kg	bar	Inch
12.4 X 24 TRACTOR	8	A6	315	1131	521	3325	1450	2.3	w11.0
14.9X24 TRACTOR	8	A6	378	1245	560	3660	1800	1.8	w13.0
12.4X28 STT	8	A6	315	1260	570	3782	1510	2.3	w11.0
13.6X28 STC	8	A6	345	1310	597	3669	1650	2.0	w12.0
14.9X28 STT	8	A6	378	1365	607	4136	1900	1.8	w13.0
16.9X28STT	8	A6	429	1435	643	4348	2180	1.7	w15.0L
16.9X30 AGRI 21	8	A6	429	1485	667	4336	2300	1.7	w15.0L
16.9X30 AGRI21	10\12	A6	429	1485	667	4336	2455\2730	2.0\2.4	w15.0L
18.4X30 AGRI21	8	A6	467	1550	706	4542	2430	1.4	w16.0L
18.4X30 AGRI21	10\12	A6	467	1550	706	4542	2900\3250	1.8\2.3	w16.0L
18.4X30 AGRI 21	14	A6	467	1550	706	4542	3445	2.6	w16.0L
16.9X34 Champion	8	A6	429	1585	693	4803	2430	1.7	w15.0L
18.4X30 AGRI 21	16	A6	467	1550	706	4542	3550	2.6	w16.0L

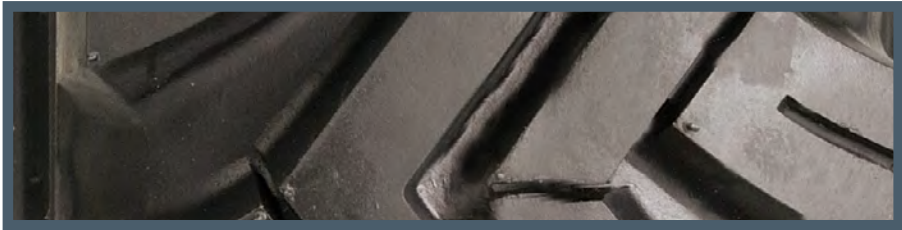


FARMWORK RANGE



Description

Diagonal tyre in small sizes designed for small farm machine use and different types of trailers.



Technical Characteristics

The tread pattern is designed to improve traction.
It has also particularly strong casing

Advantages

It's extremely resistant cross ply structure and it's tread ensure maximum grip resistance to damage, cuts and abrasions.
It offers excellent self cleaning properties and it's compound guarantees longer life.

Tire size	PR	INDEX SPEED	Characteristics				Max load		Inflation Pressure For	Rim Width
			Section width	Overall diameter	Loaded radius	Rolling circumference	Per axle		Max load	Recommended
			mm	mm	mm	mm	Simple Kg	Dual Kg	Bar	Inch
7.50 x 16 ST	8	A6	214	806	361	2458	2240	4240	4.0	6.0
8.25 X 15 SM4	12	A6	247	833	357	2449	3000		6.0	6.5
8.25 X 20 T500	12	A6	234	970	465	2945	3800	7200	6.0	6.5
9.00X 16 SM4	12	A6	270	894	393	2628	4000	7200	6.3	6.5
9.00X20 T500	12	A6	256	1012	470	3142	4480	8240	6.3	7.0



Earthmoving D&G ET R&B RANGE



Description

Cross - ply tyres which offers a high resistant for use on graders, shovel loaders of low and medium power, dumpers or dump trucks.



Technical Characteristics

High resistance to tears, cuts and lacerations.

The tread made up of robust transversal lugs ensure maximum grip, excellent self cleaning and it's compound guarantees longer life.

Tire size	PR	INDEX SPEED		Characteristics				Max load		Inflation Pressure For		Rim Width	
				Section width	Overall diameter	Loaded radius	Rolling circumference	In Kg Per Tire		Max load		Recommended	
				mm	mm	mm	mm	A2	B	A2	B	Inch	
1300 x 24 D&G TT/TL	12	A2	B	317	1292	574	3800	5600	3000	4.5	3.0	10.00/1.5	
1400 x 24 D&G	16	A8	-	412	1350	645	4050	-	3650	-	3.75	10.00/1.5	
17.5 x 25 RB TT/TL	16	A2	B	460	1348	600	3960	7300	4250	4.75	3.0	14.00/1.5	
20.5 x 25 RB TT/TL	16	A2	B	521	1493	653	4386	8250	5450	3.5	2.8	17.00/2.0	
23.5 x 25 RB TT/TL	20	A2	B	597	1617	713	-	10900	7300	3.75	3.0	19.5/2.5	



Industrial Use

SUPER INDUSTRIEL

RANGE



Description

The pronounced ribbings and their special shape offer high grip. The diagonal structure makes this tyre particularly suitable for all types of hard work on wet, heavy soils of mud clay and sandy nature.



Technical Characteristics

Tyre designed for use on industrial tractors.

The «SUP IND» has a particular strong carcass and a tread design which is highly resistant to lacerations and tears - High mileage in the most difficult working conditions, very robust structure and tread.

Excellent grip characteristics.

Advantages

The high traction of the tyres allows the tractor power to be fully exploited and ensures good mileage and saving in fuel consumption.

Due to the exceptional rib height the tractor may be efficiently used even under bad weather conditions on very wet soil, with high mileage and high level hourly yield.

Tire size	PR	Index	speed	Characteristics				Max load	Inflation Pressure For	Rim Width
				Section width	Overall Diameter	Loaded radius	Rolling circumference	In kg Per tire	Max load	Recommended
				mm	mm	mm	mm	A8	A2	Inch
16.9x28 SUP.IND.TT/TL	12	A8	B	429	1435	631	4270	3550	2.6	28/15
12.5/80 X 18 SUP.IND. TL	12	A6	-	308	976	-	-	1850	3.7	W 9

ADVICES & RECOMMANDATIONS TYRE REPLACEMENT

REPLACEMENT OF THE TIRES

It is necessary during this operation to be sure that the new tyre that is going to be fitted in the car has the same technical characteristics as the original one which was determinated by car and tyre manufacturers

ASSEMBLY / DISASSEMBLY

To realize and be sure that this operation is done correctly, it is essential to operate in a maintenance environment clean and well organized :

- Use the appropriate accessories and lubricant
- Check that the whole assembly ready to be mounted is conform to the tyre dimensions and its version: Tubetype or Tubeless
- Every time you mount a new tubless tyre you have to fit a new valve.

INFLATION PRESSURE

The tyre life is related particularly to the good inflation pressure with relation to the load.

- The over-inflation reduces the comfort, the grip and the mileage of the tyre
 - The under-inflation reduces the mileage of the tyre, especially at high temperature.
- This excessive fatigue can deteriorate the carcass and cause irregular wear
- Adjust inflation pressure when the tyre is cold, and do not readjust when hot.

LOAD

The over load causes :

- Reduction in mileage
- Excessive deformation of the tyre
- Reduction in tyre life

CORRESPONDENCE LOAD INDEX LOAD CAPACITY (KG) per tire

Li		kg		Li		kg									
66		300		122		1500									
67		307		123		1550									
68		315		124		1600									
69		325		125		1650									
70		335		126		1700									
71		345		127		1750									
72		355		128		1800									
73		365		129		1850									
74		375		130		1900									
75		385		131		1950									
76		400		132		2000									
77		412		133		2060									
78		425		134		2120									
79		437		135		2180									
80		450		136		2240									
81		462		137		2300									
82		475		138		2360									
83		487		139		2430									
84		500		140		2500									
85		515		141		2575									
86		530		142		2650									
87		545		143		2725									
88		560		144		2800									
89		580		145		2900									
90		600		146		3000									
91		615		147		3075									
92		630		148		3150									
93		650		149		3250									
94		670		150		3350									
95		690		151		3450									
96		710		152		3550									
97		730		153		3650									
98		750		154		3750									
99		775		155		3875									
100		800		156		4000									
101		825		157		4125									
102		850		158		4250									
103		875		159		4375									
104		900		160		4500									
105		925		161		4625									
106		950		162		4750									
107		975		163		4875									
108		1000		164		5000									
109		1030		165		5150									
110		1060		166		5300									
111		1090		167		5450									
112		1120		168		5600									
113		1150		169		5800									
114		1180		170		6000									
115		1215		171		6150									
116		1250		172		6300									
117		1285		173		6500									
118		1320		174		6700									
119		1360		175		6900									
120		1400		176		7100									
121		1450		177		7300									
code	A6	B	J	K	L	M	N	P	Q	R	S	T	U	H	V
km/h	30	50	100	110	120	130	140	150	160	170	180	190	200	210	240

