

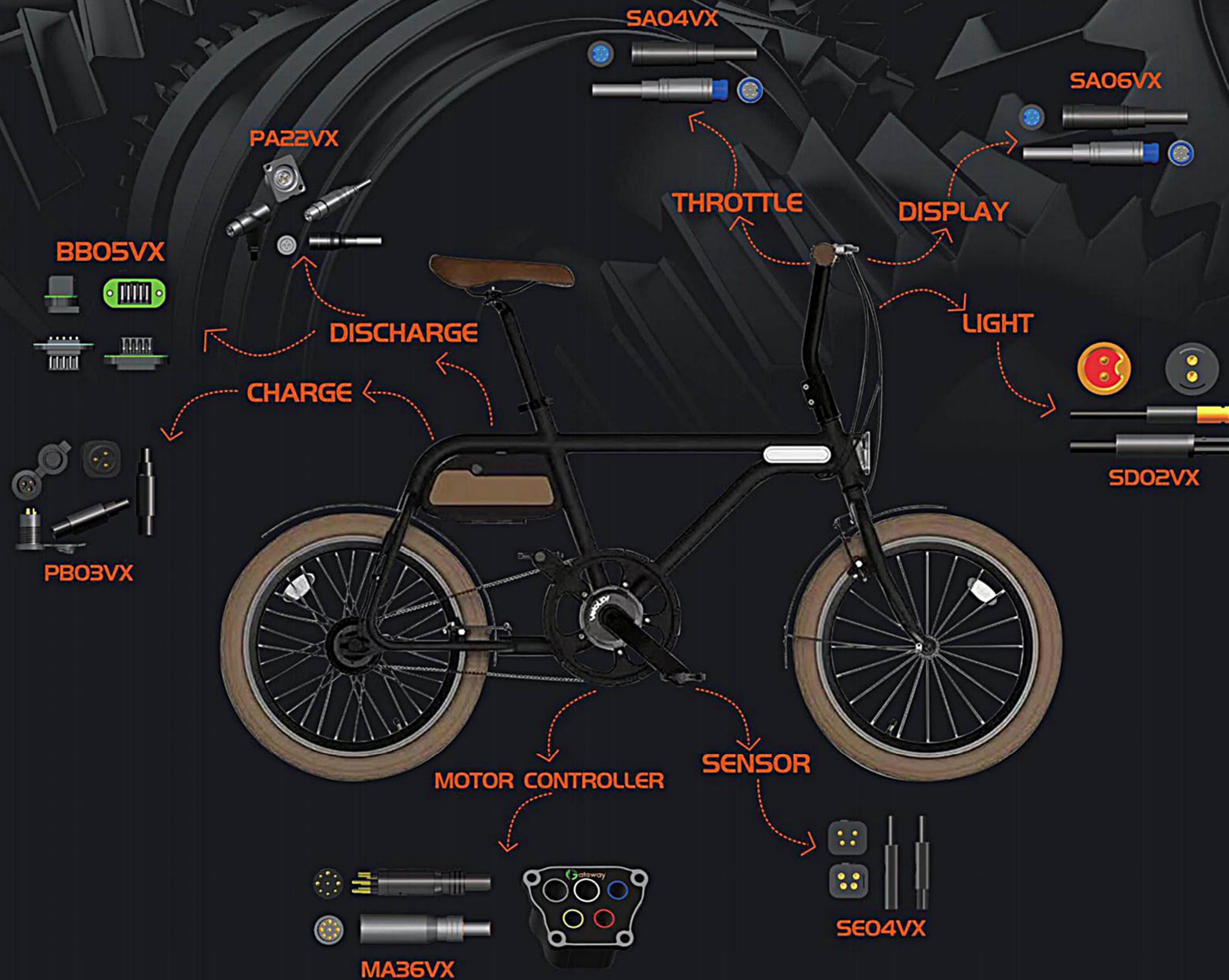
# ABOUT GATEWAY

---

Gateway is a company dedicated to the R&D and production of connectors for the high-end E-bike market. With a focus on environmental protection and an independent research and development team, Gateway is committed to becoming a total solution provider for E-bike and component manufacturers. The company provides products designed for use in batteries, motors, and controllers for clients spanning the fields of electric bicycles, industrial automation, and energy storage equipment. The company has also passed and received ISO9000, ISO14000, and many other certifications.

In order to continuously improve upon our core competencies and meet the competitive demands of the market, we will focus on continuous innovation in order to provide excellent quality.







# Signal

## SA06VX



Terminal Plating: Gold Plated

Rated Voltage: 48V AC 60V DC

Rated Current: 2A Max

Operating Temperature: -40°C-80°C

IP Rating: IP66

Mating Cycles: 250

Contact Resistance: 20mΩ Max

Insulation Resistance: 500V 100MΩ Min

PIN NO.:2P,3P,4P,5P,6P

Male size 24.8mm ; Female size 29mm

# Signal

## SC06VX



Terminal Plating: Gold Plated

Rated Voltage: 48V AC 60V DC

Rated Current: 2A Max

Operating Temperature: -40°C-80°C

IP Rating: IP67

Mating Cycles: 2500

Contact Resistance: 20mΩ Max

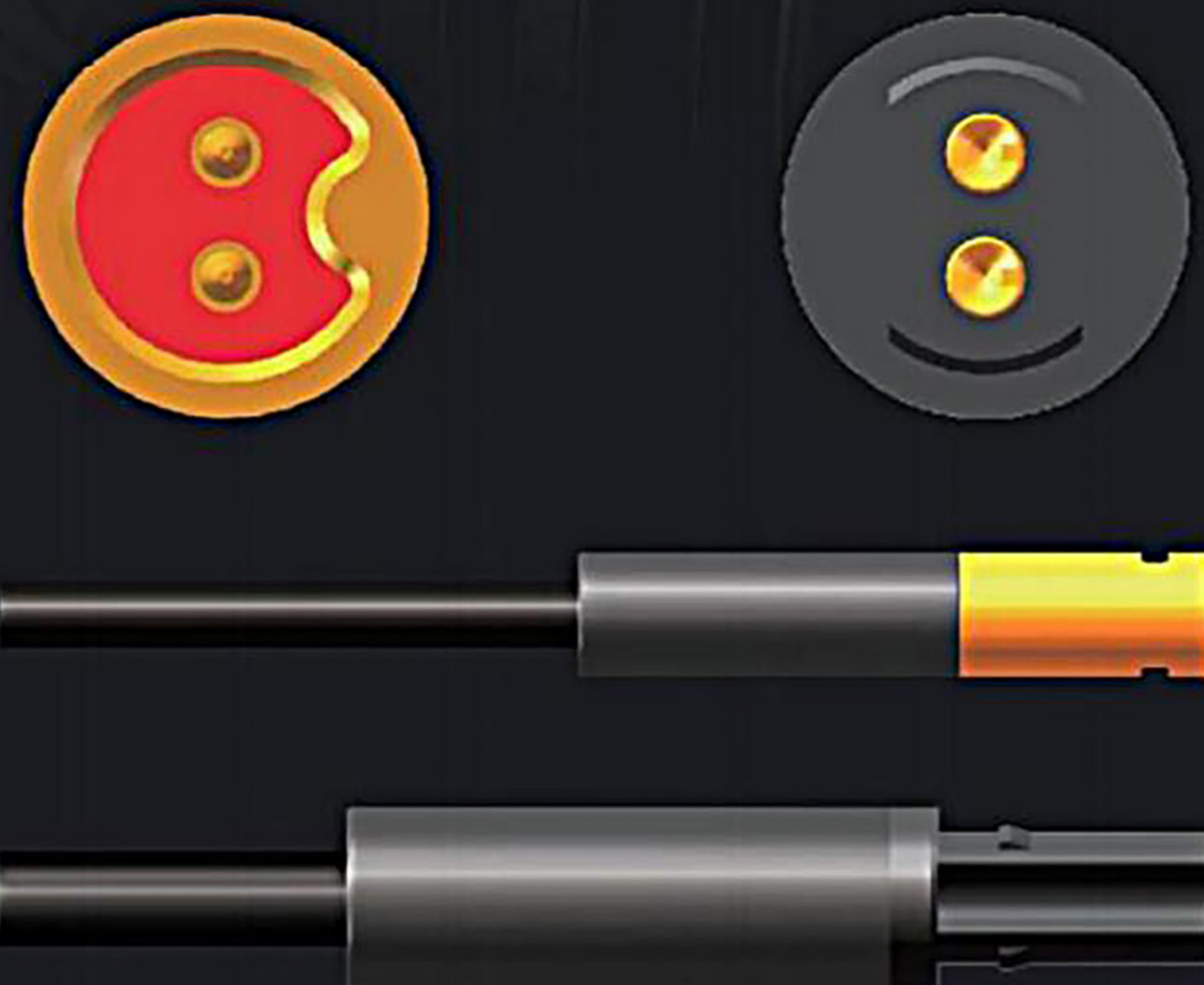
Insulation Resistance: 500V 100MΩ Min

Male size 29mm ; Female size 39.4mm



# Signal

## SD02VX



Rated voltage: 48V AC

Rated current: 2A

Rated Temperature: -25°C+80°C

IP Rating: IP67

Mating Cycles: 50

Contact impedance: 10mΩ MAX

Insulation: 500V 20MΩ Min

# Signal

## SE04VX



Rated voltage: 48V AC

Rated current: 2A

Rated Temperature: -25°C+80°C

IP Rating: IP67

Mating Cycles: 50

Contact impedance: 10mΩ MAX

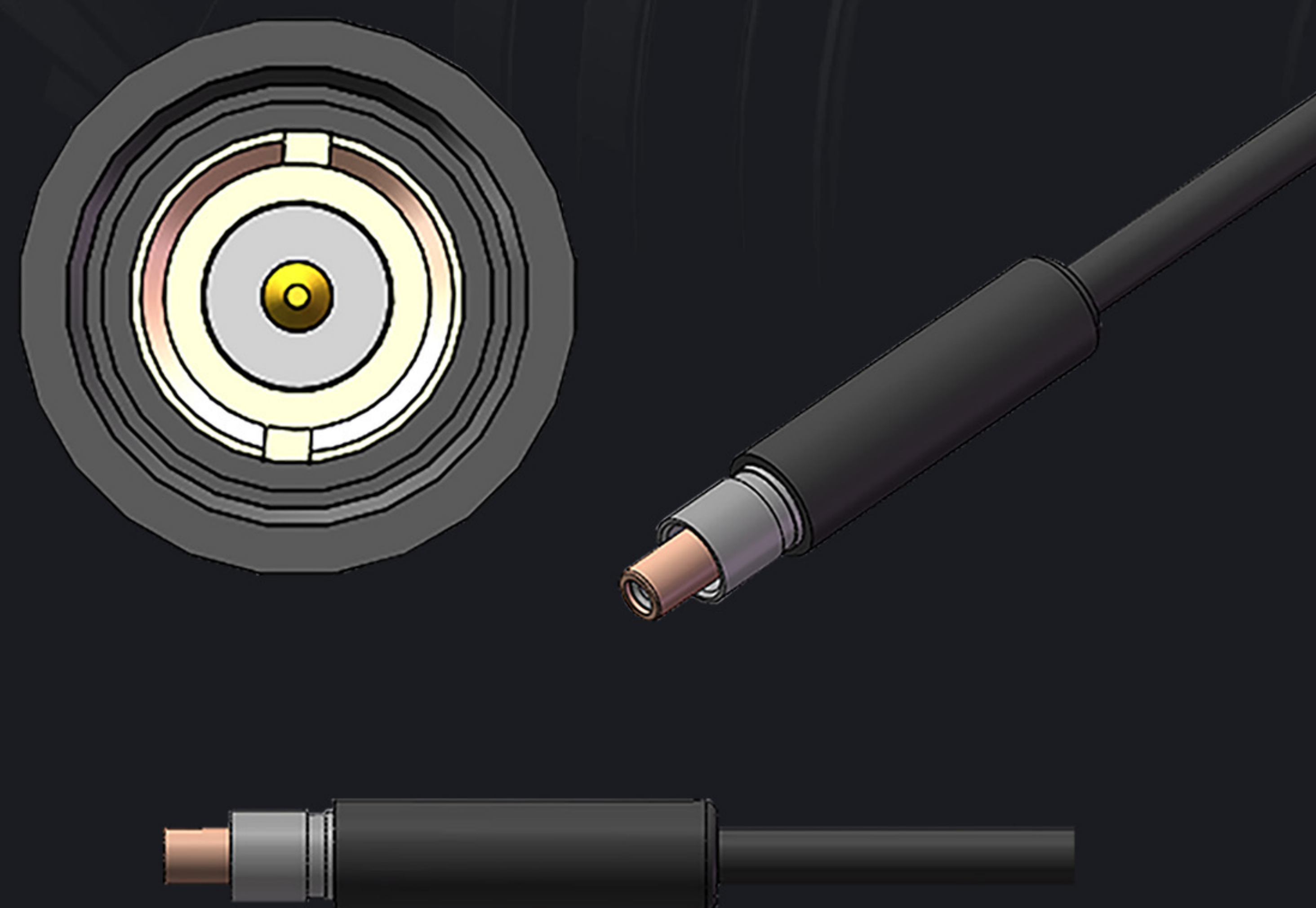
Insulation: 500V 20MΩ Min

Male size 23.9mm ; Female size 22.9mm



Signal

SF01WX



Rated voltage: 48V AC

Rated current: 2A MAX

Rated Temperature: -25°C+80°C

IP Rating: IP67

Mating Cycles: 200 times

Contact impedance: 10mΩ MAX

Insulation: 500V 20MΩ Min

Male size 23.9mm ; Female size 18.9mm

Matching size 35.4mm

Signal

SA11XX



Rated voltage: 48V AC/DC

Rated current: Signal 5A Max

Rated Temperature: -25°C+80°C

IP Rating: IP67

Mating Cycles: 200 times

Contact impedance: 30mΩ MAX

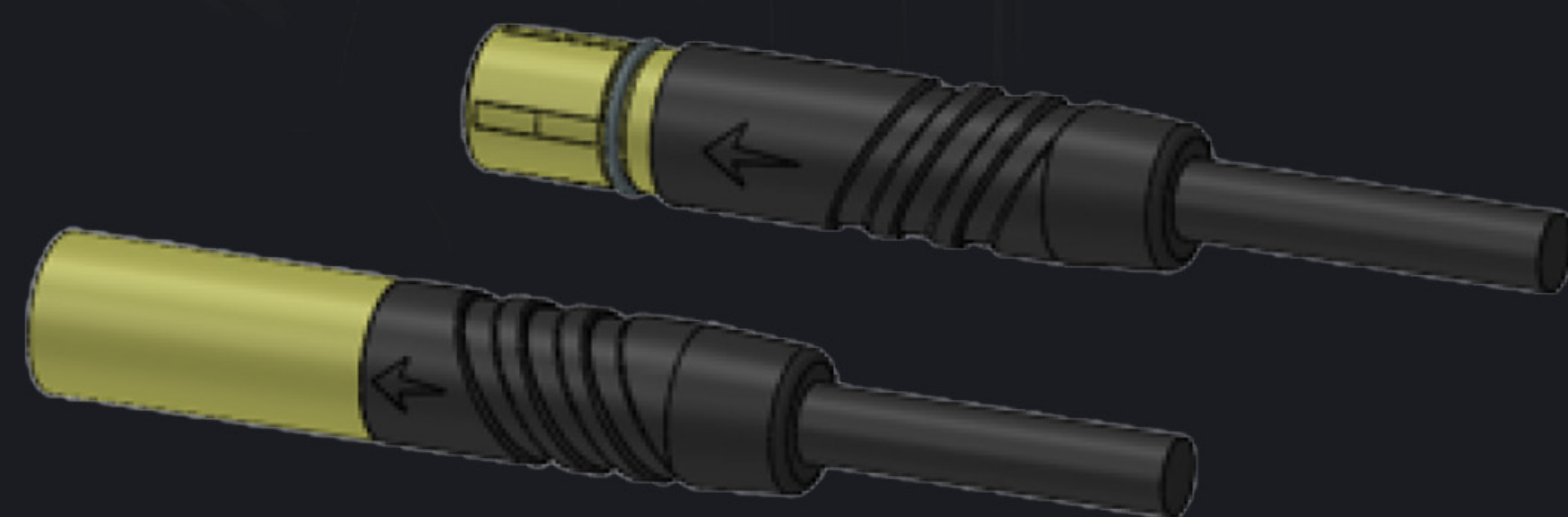
Insulation: 500V 20MΩ Min

Matching size 73.3mm



# Signal

## SG03XX



Rated voltage: 48V AC/DC

Rated current: Signal 2A Max

Rated Temperature: -25°C-+80°C

IP Rating: IP67

Mating Cycles: 200 times

Contact impedance: 30mΩ MAX

Insulation: 500V 20MΩ Min

# Signal

## SH06WX



Rated voltage: 48V AC/DC

Rated current: Signal 2A Max

Rated Temperature: -25°C-+80°C

IP Rating: IP67

Mating Cycles: 200 times

Contact impedance: 30mΩ MAX

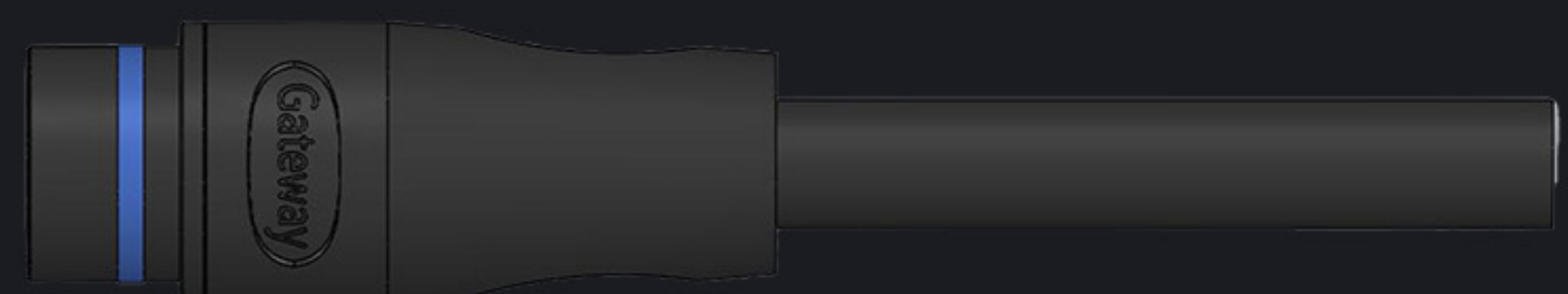
Insulation: 500V 20MΩ Min

Matching size 30.6mm



Signal

SA12XX



Rated voltage: 48V AC

Rated current: 2A

Rated Temperature: -25°C+80°C

IP Rating: IP67

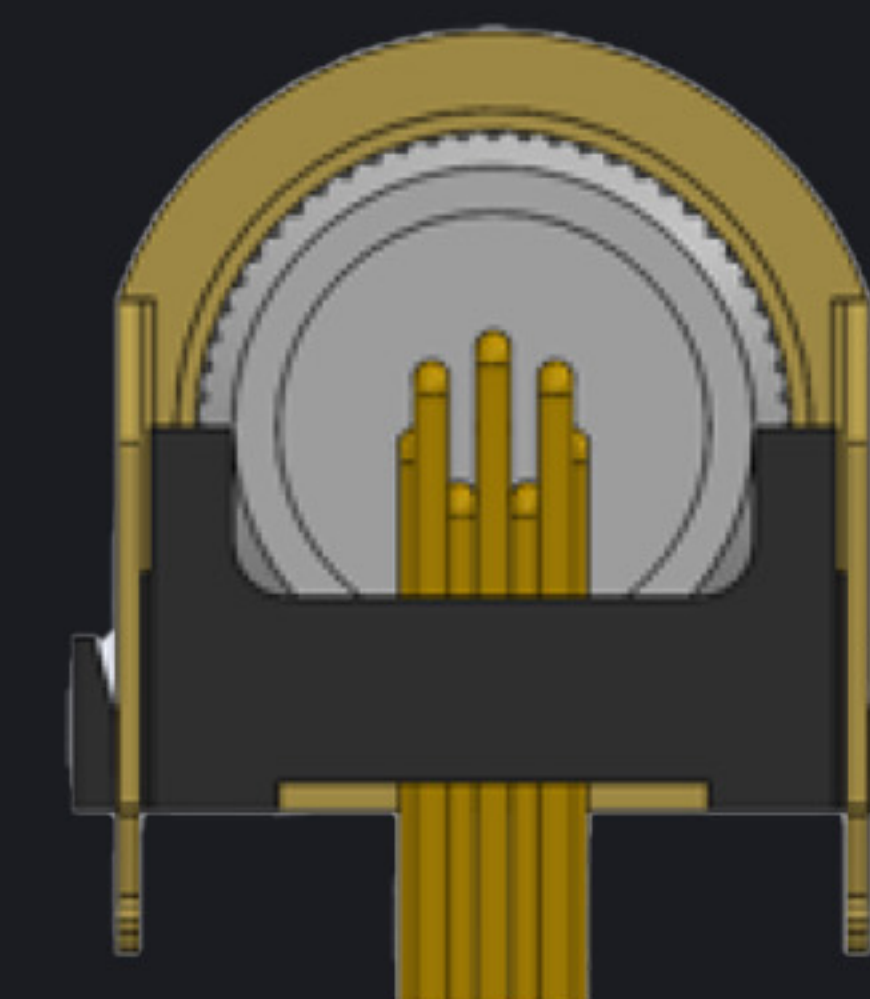
Mating Cycles: 50

Contact impedance: 10mΩ MAX

Insulation: 500V 20MΩ Min

Signal

M8



Rated voltage: 48V AC/60V DC

Rated current: Signal 2A

Rated Temperature: -25°C+80°C

IP Rating: IP67

Mating Cycles: 200 times

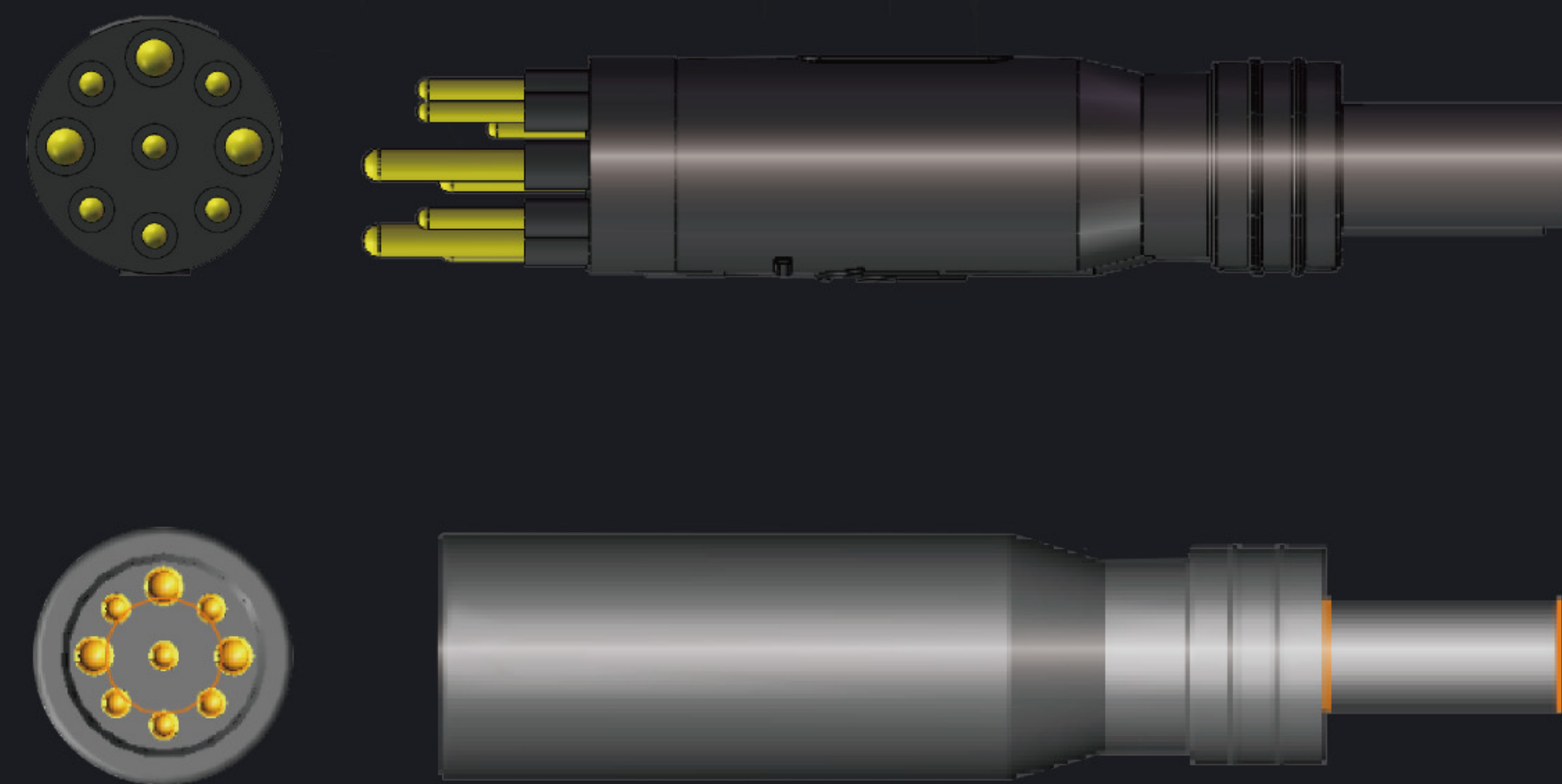
Contact impedance: 30mΩ MAX

Insulation: 500V 100MΩ Min



# Motor

## MA36VX



Terminal Plating: Gold Plated

Rated Voltage: 48V AC 60V DC

Rated Current: Signal 2A Max; Power 15A Max

Operating Temperature: -40°C-80°C

IP Rating: IP66

Mating Cycles: 250

Contact Resistance: 20mΩ Max

Insulation Resistance: 500V 100MΩ Min

# Motor

## MB36WX



Rated voltage: 48V AC/60V DC

Rated current: 30A Power, 2A Signal

Rated Temperature: -25°C-+80°C

IP Rating: IP67

Mating Cycles: 2000 times

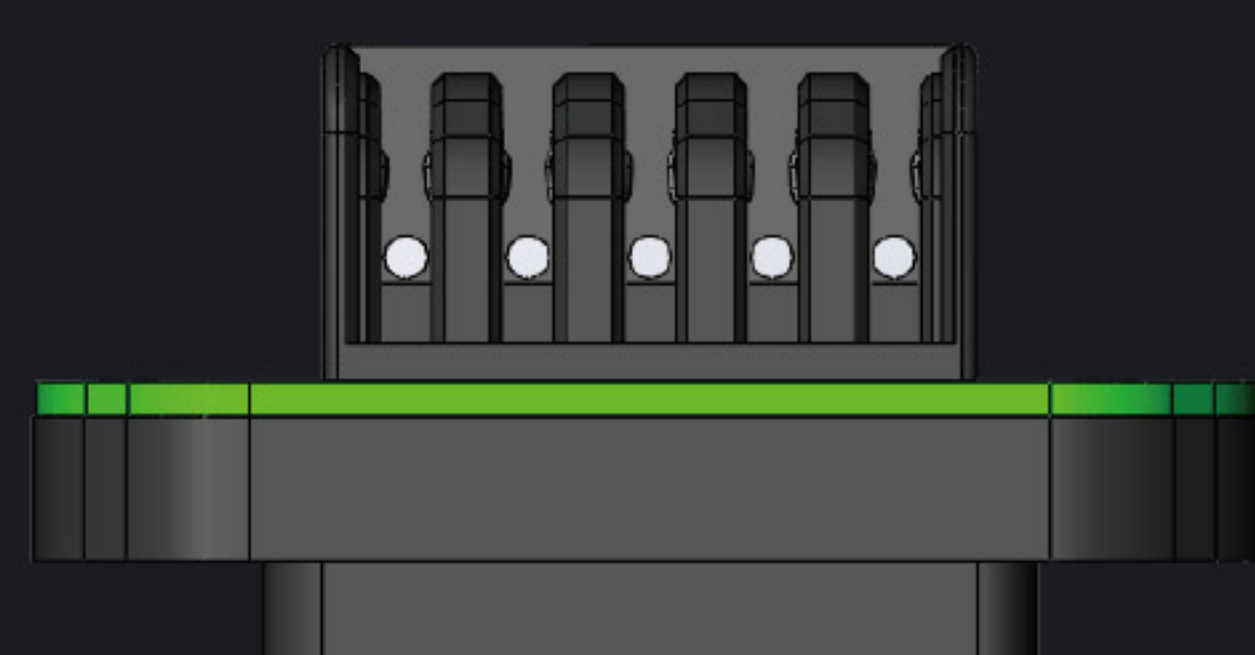
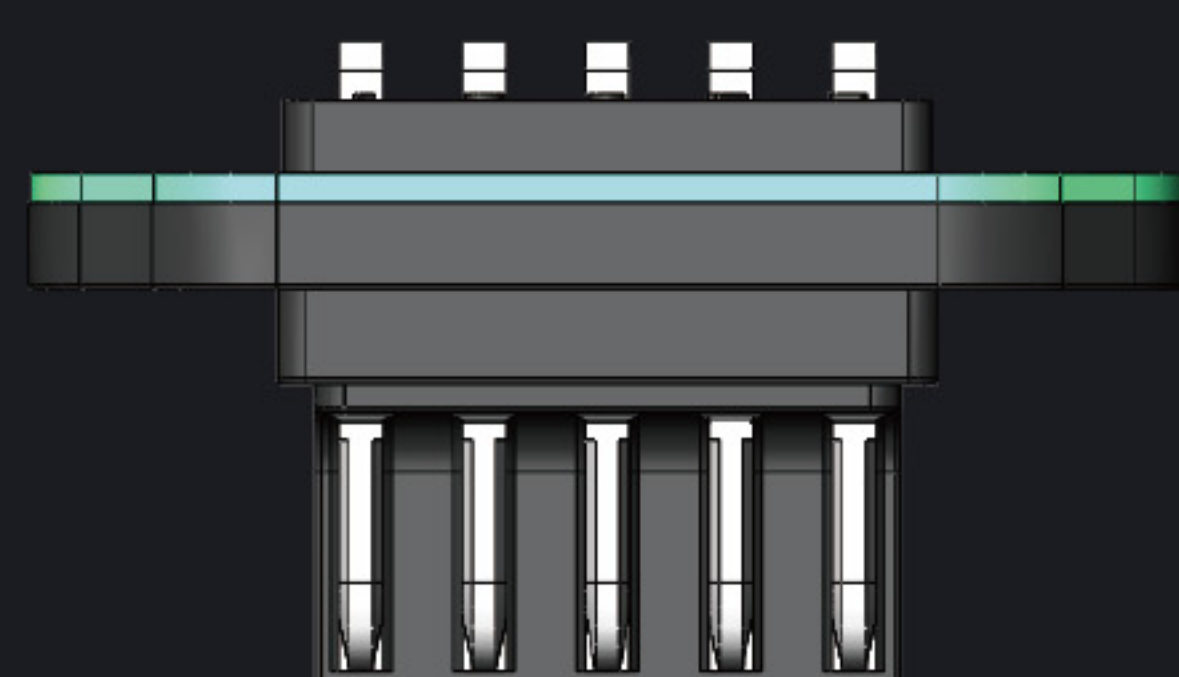
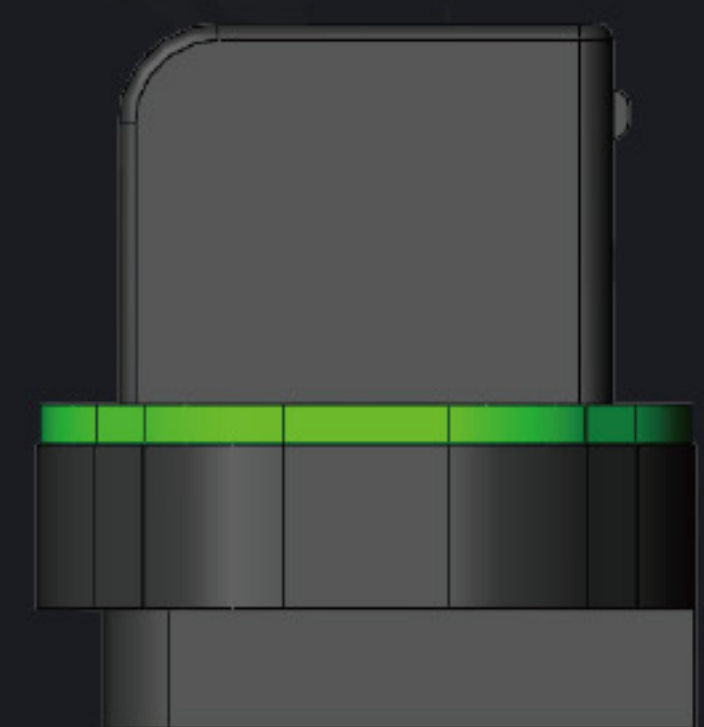
Contact impedance: 15mΩ MAX

Insulation: 500V 20MΩ Min



# Bladed Type

BB05VX



Terminal Plating: Nickel Plated

Rated Voltage: 48V AC 60V DC

Rated Current: 30A Max

Operating Temperature: -40°C-80°C

IP Rating: IP67(Mated Condition)

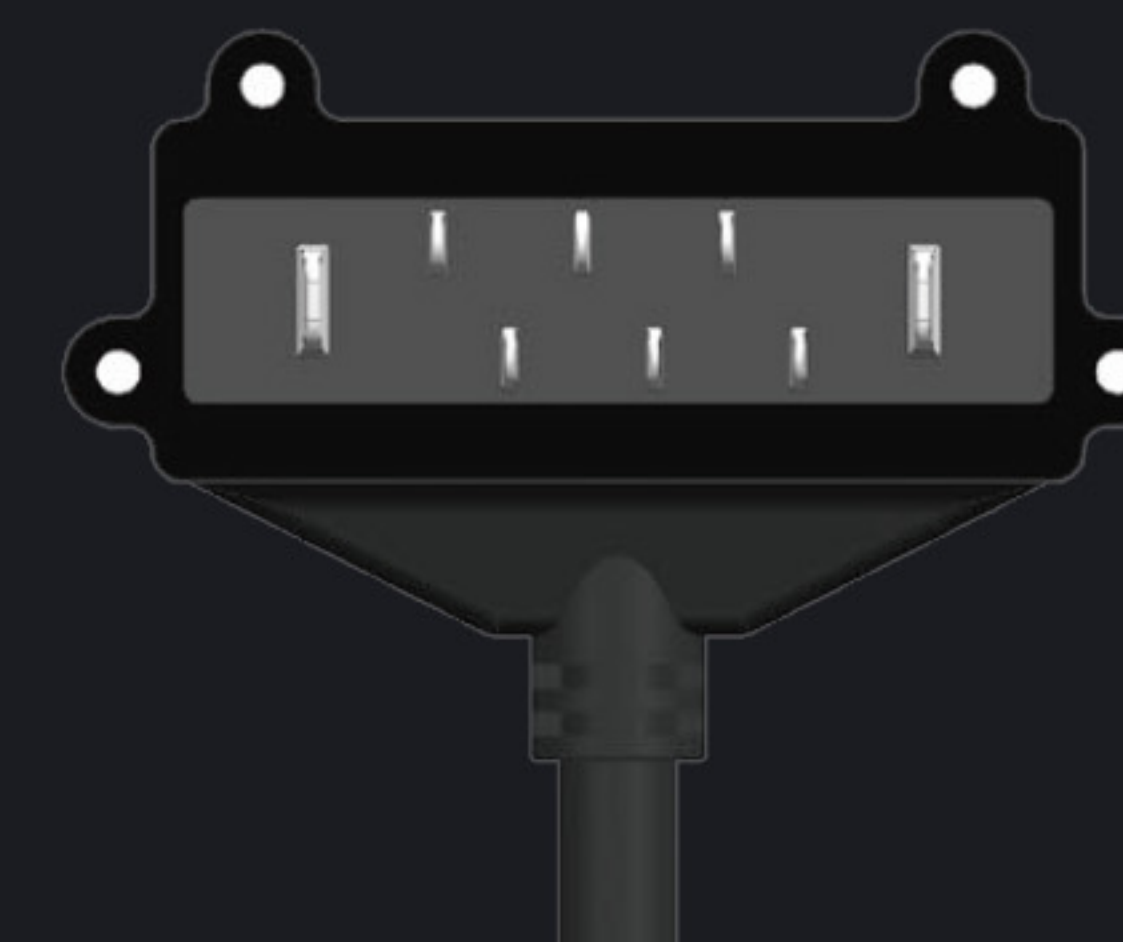
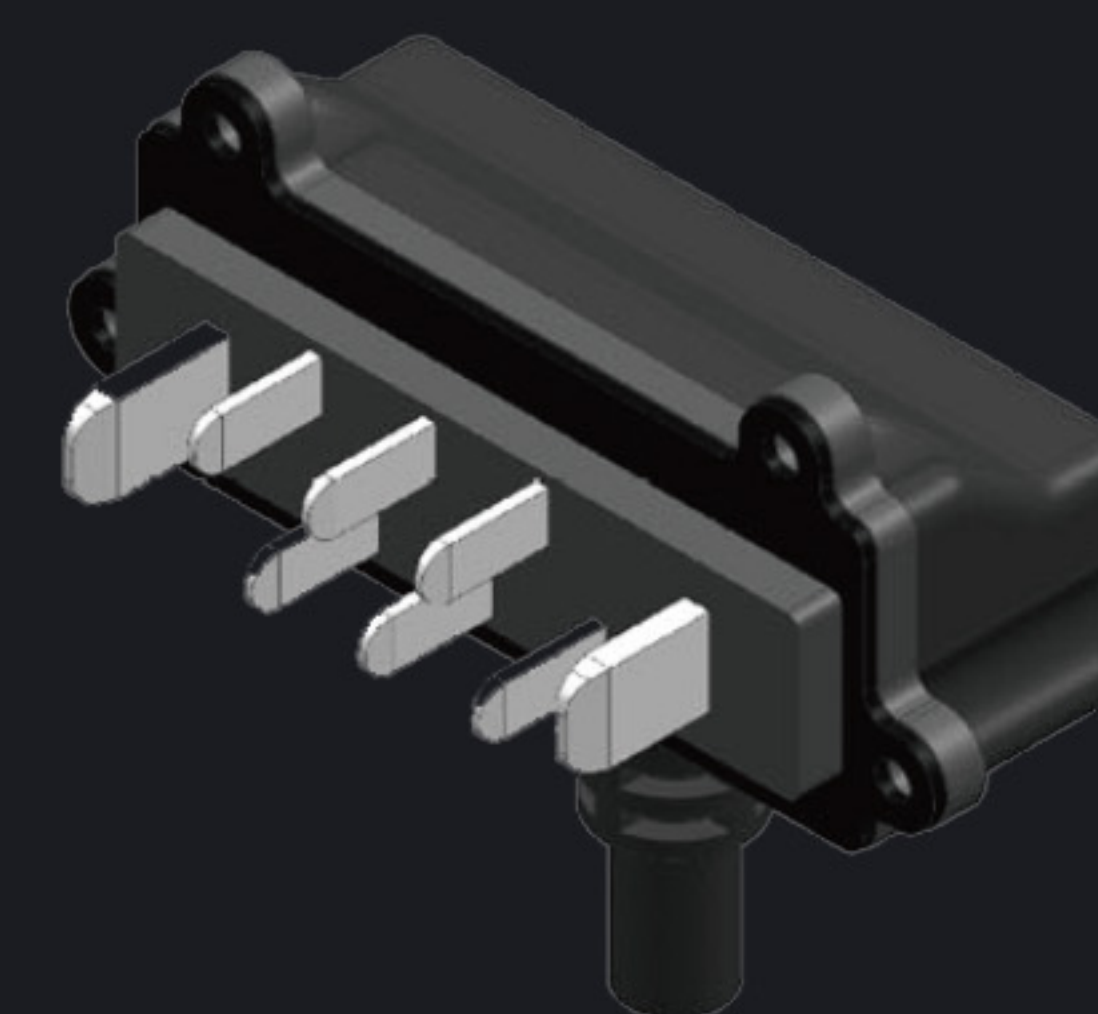
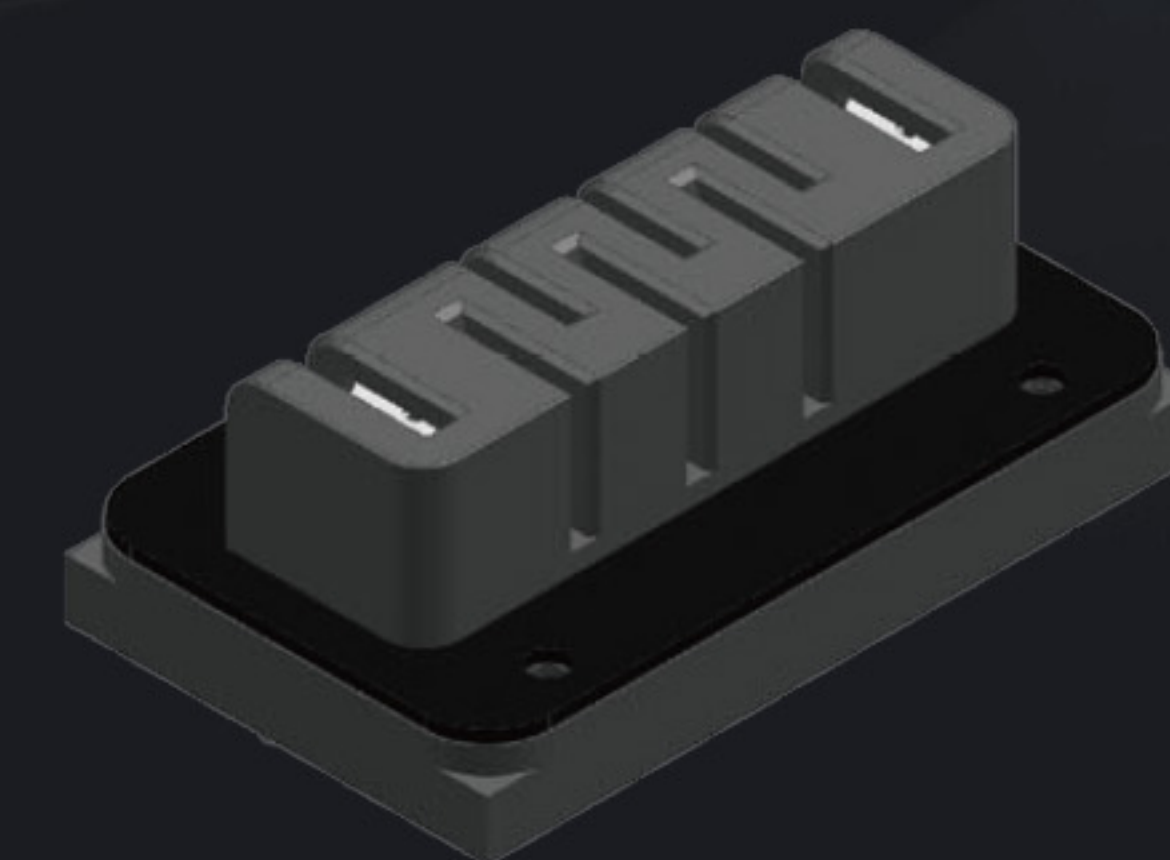
Mating Cycles: 3000

Contact Resistance: 10mΩ Max

Insulation Resistance: 500V 100MΩ Min

# Bladed Type

BA26VX



Terminal Plating: Nickel Plated/ Gold Plated

Rated Voltage: 48V AC 60V DC

Rated Current: Signal 5A Max; Power 30A Max

Operating Temperature: -40°C-80°C

IP Rating: IP67(Mated Condition)

Mating Cycles: 3000

Contact Resistance: 10mΩ Max

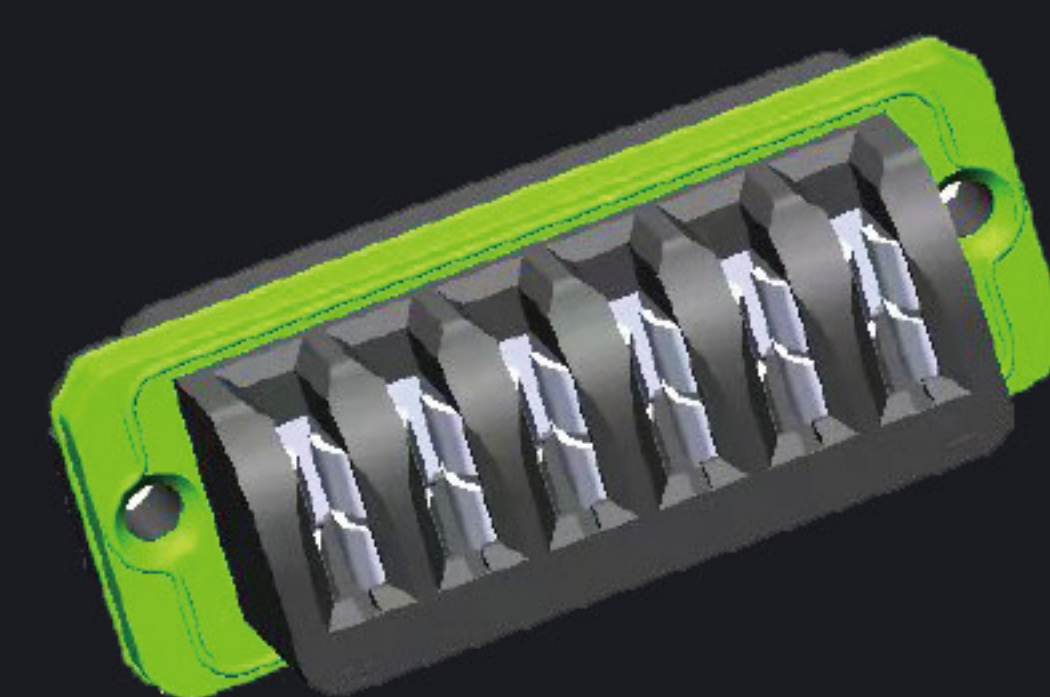
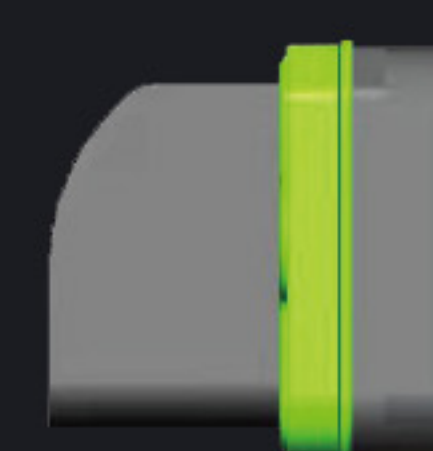
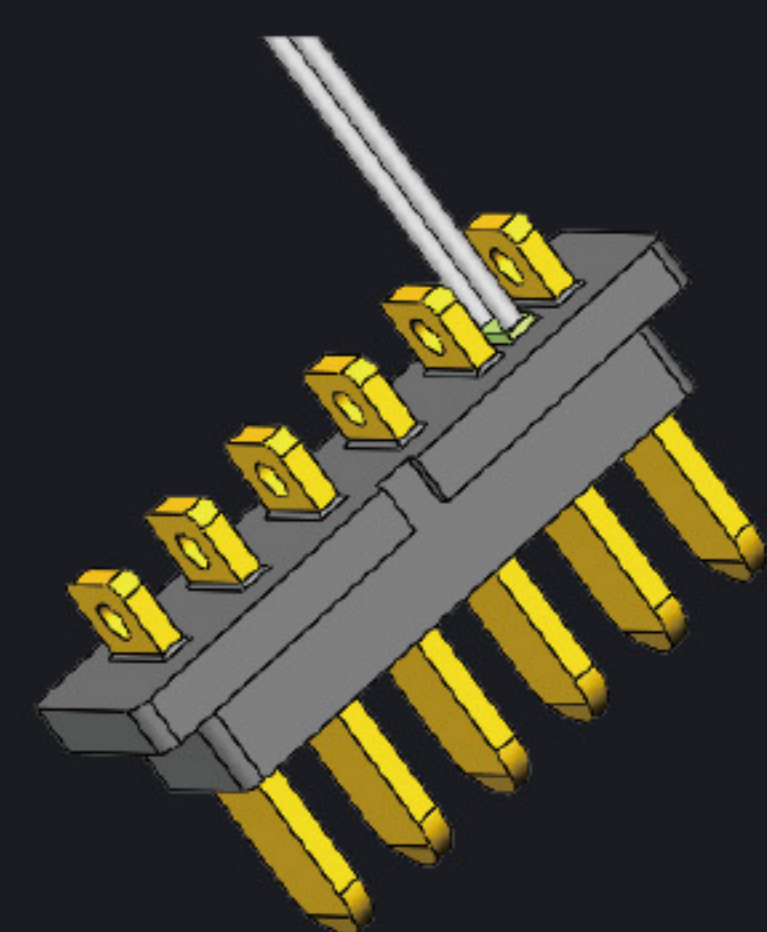
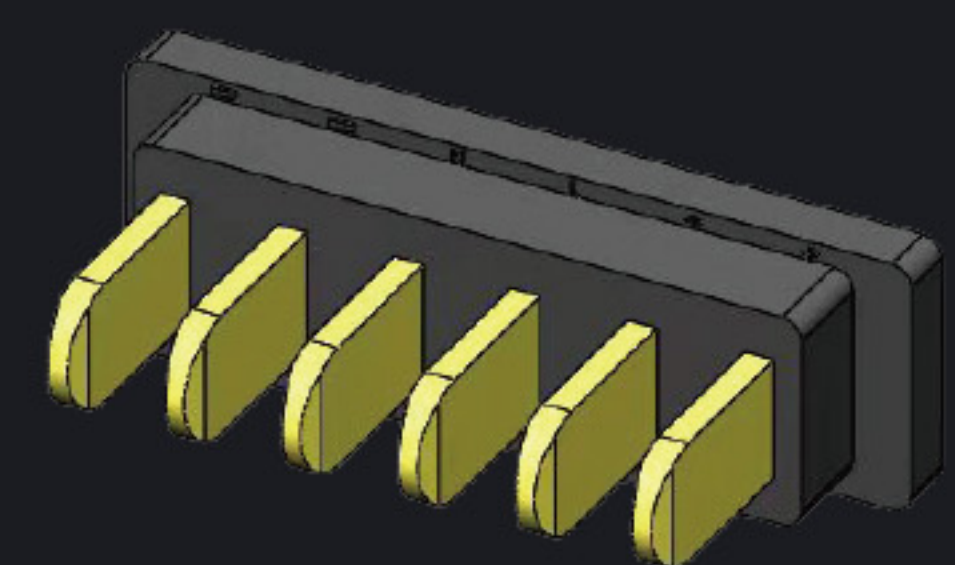
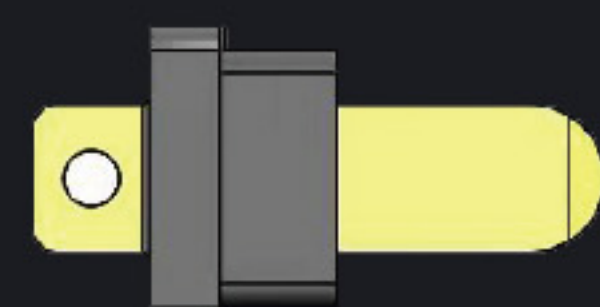
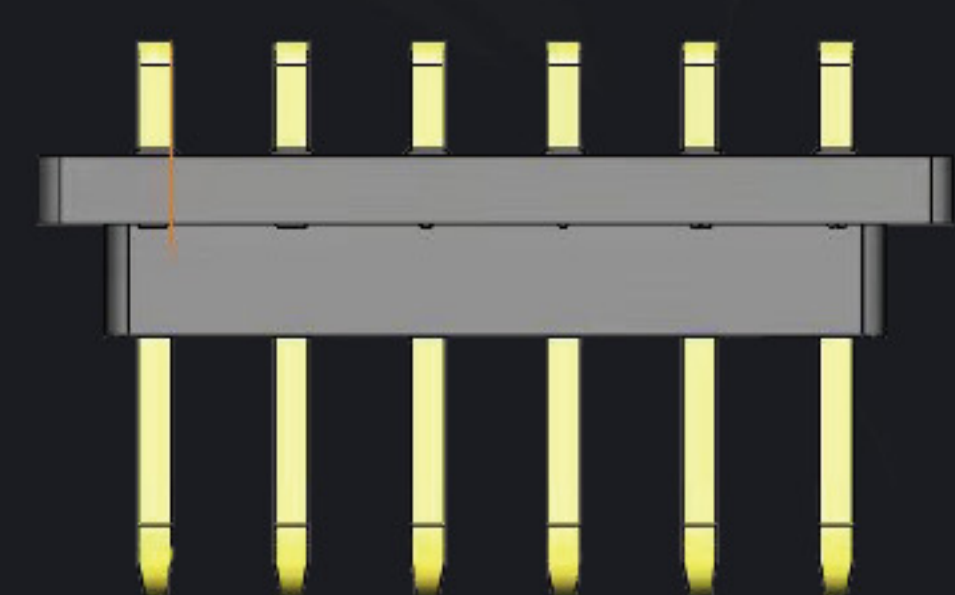
Insulation Resistance: 500V 100MΩ Min

Male size 63mm ; Female size 55.5mm



# Bladed Type

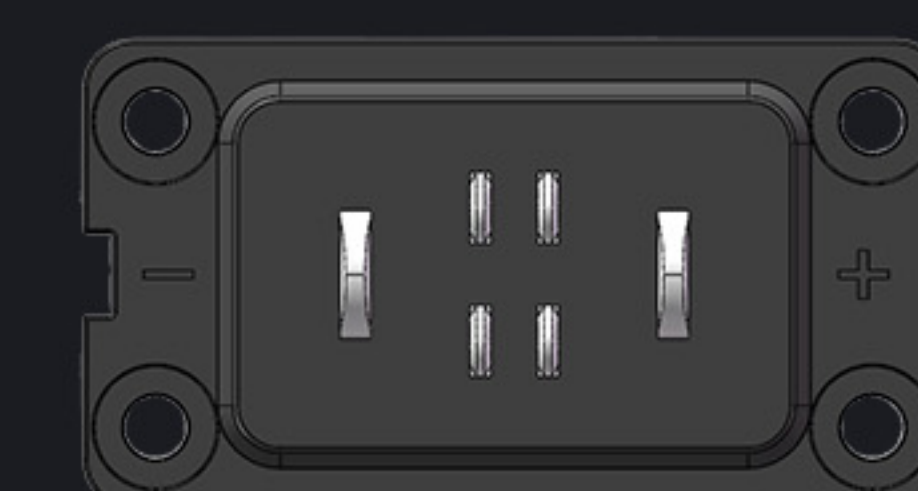
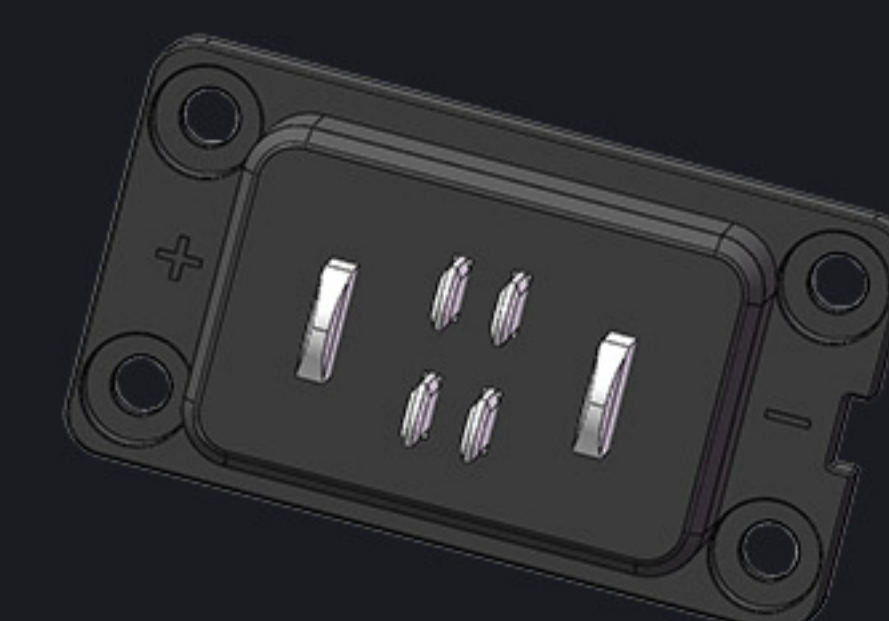
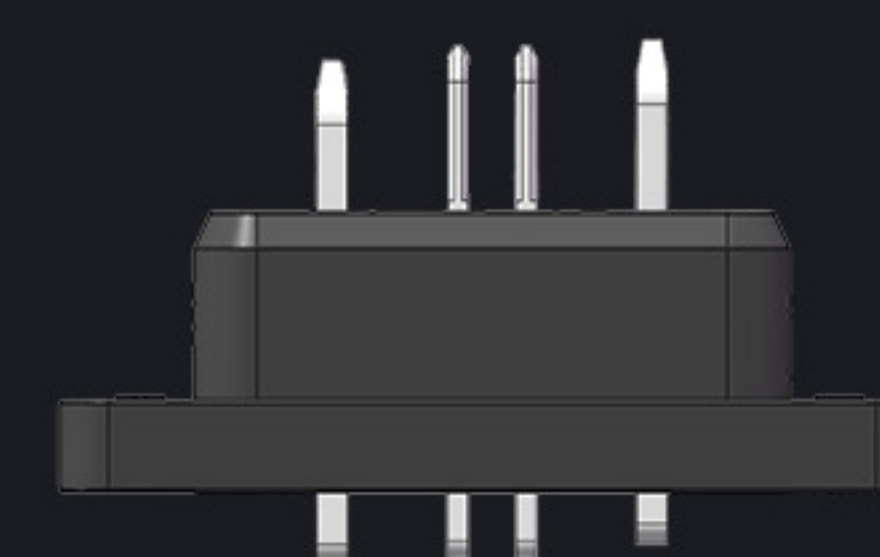
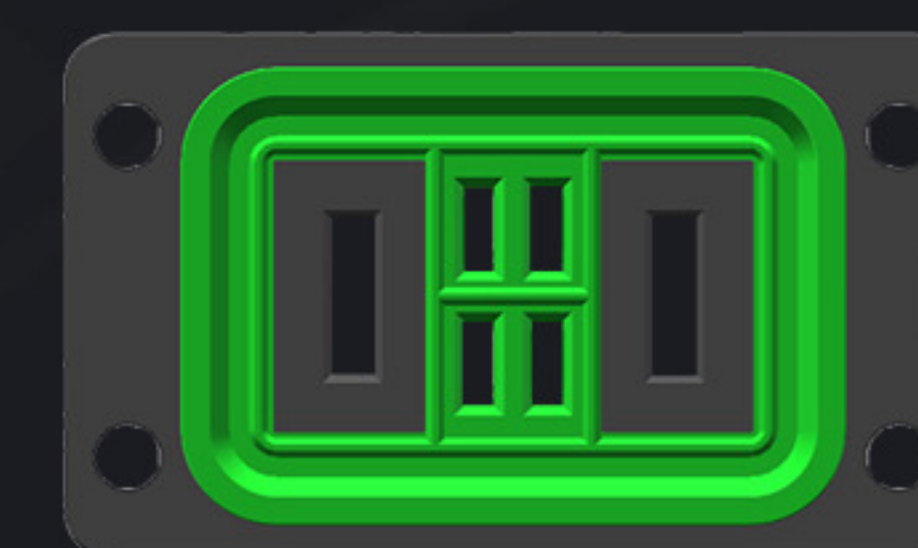
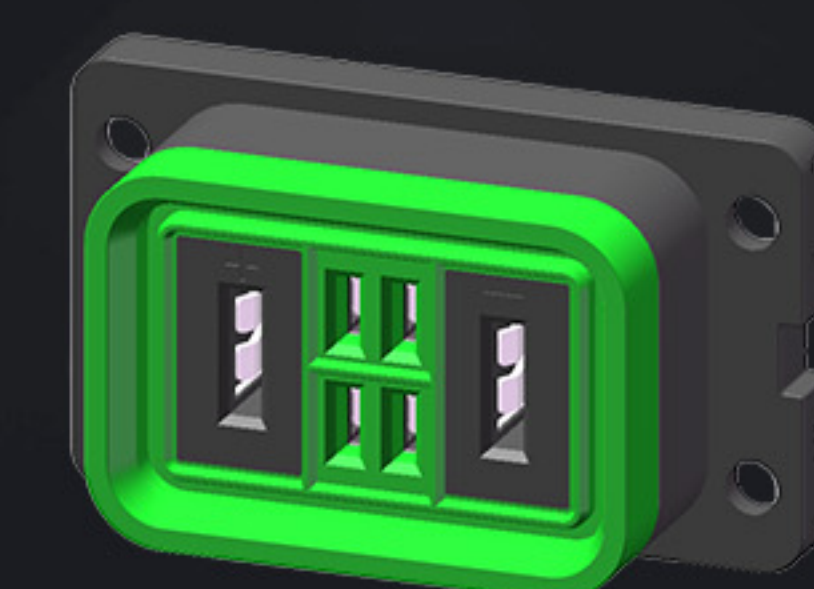
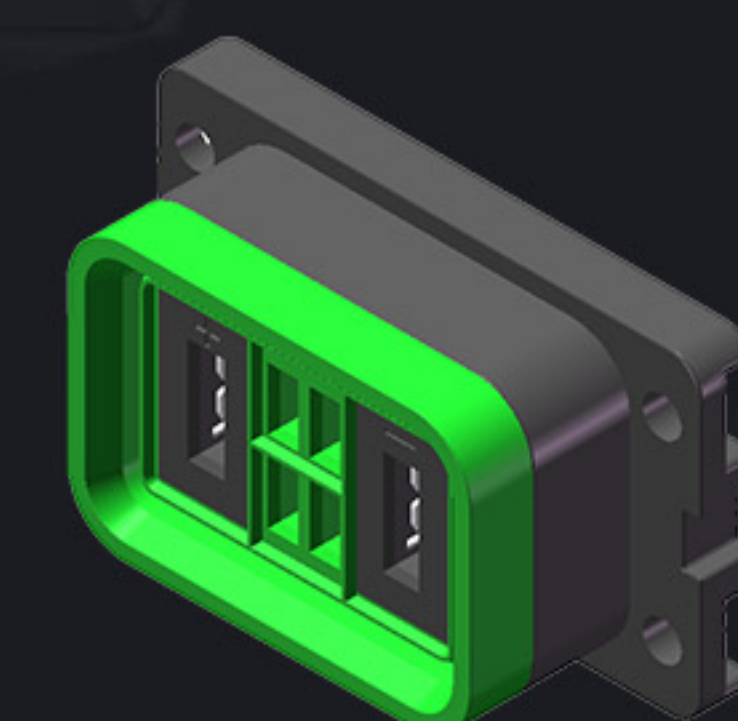
BC06VX



Male size 40.35mm;Female size 50.6mm

# Bladed Type

BA24XX



Rated voltage: 48V AC/60V DC

Rated current: Signal 2A Max;Power 30A Max

Rated Temperature: -25°C~+80°C

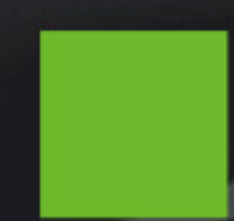
IP Rating: IP67

Mating Cycles: 2500 times

Contact impedance: 30mΩ MAX

Insulation: 500V 100MΩ Min





# Fuse box



| P/N       | AWG | FUSE |
|-----------|-----|------|
| BX- 2001A | #18 | ≤10A |
| BX- 2001B | #16 | ≤15A |
| BX- 2001C | #14 | ≤25A |



# Power

## PB03VX



Terminal Plating: Nickel Plated/ Gold Plated

Rated Voltage: 48V AC 60V DC

Rated Current: Power 10A Max

Operating Temperature: -40°C-80°C

IP Rating: IP67(Mated Condition)

Mating Cycles: 3000

Contact Resistance: 10mΩ Max

Insulation Resistance: 500V 100MΩ Min

Male size 41.5mm ; Female size 17.3mm

Matching size 47.8mm

# Power

## PA22VX



Terminal Plating: Gold Plated

Rated Voltage: 48V AC 60V DC

Rated Current: Signal 5A Max; Power 25A Max

Operating Temperature: -40°C-80°C

IP Rating: IP64

Mating Cycles: 2500

Contact Resistance: 10mΩ Max

Insulation Resistance: 500V 100MΩ Min



# Power

## PA26XX



Rated voltage: 48V AC/60V DC

Rated current: Signal 5A Max;Power 50A Max

Rated Temperature: -25°C~+80°C

IP Rating: IP67

Mating Cycles: 2500 times

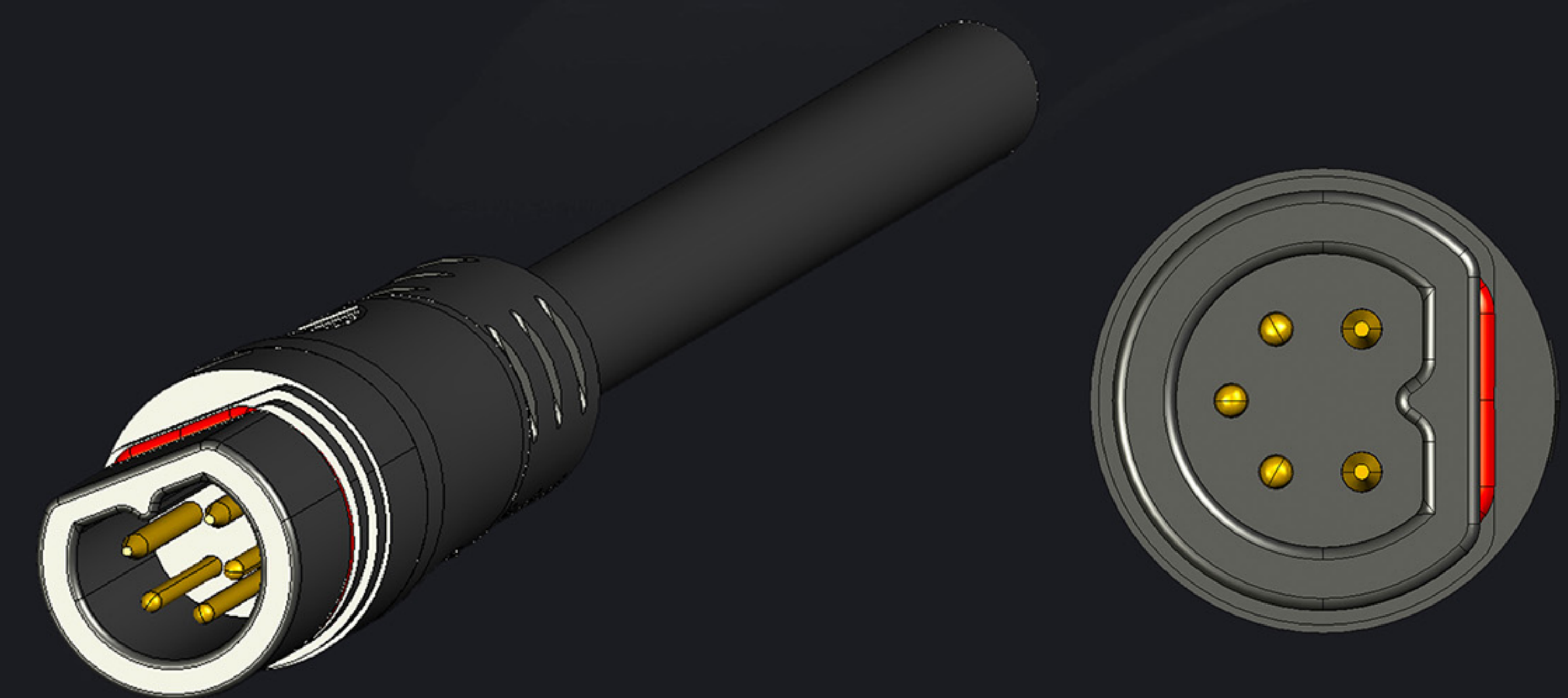
Contact impedance: 30mΩ MAX

Insulation: 500V 100MΩ Min

Matching size 30.3mm

# Power

## PA23WM



Rated voltage: 48V AC/60V DC

Rated current: Signal 2A Max;Power 6A Max

Rated Temperature: -25°C~+80°C

IP Rating: IP67

Mating Cycles: 2500 times

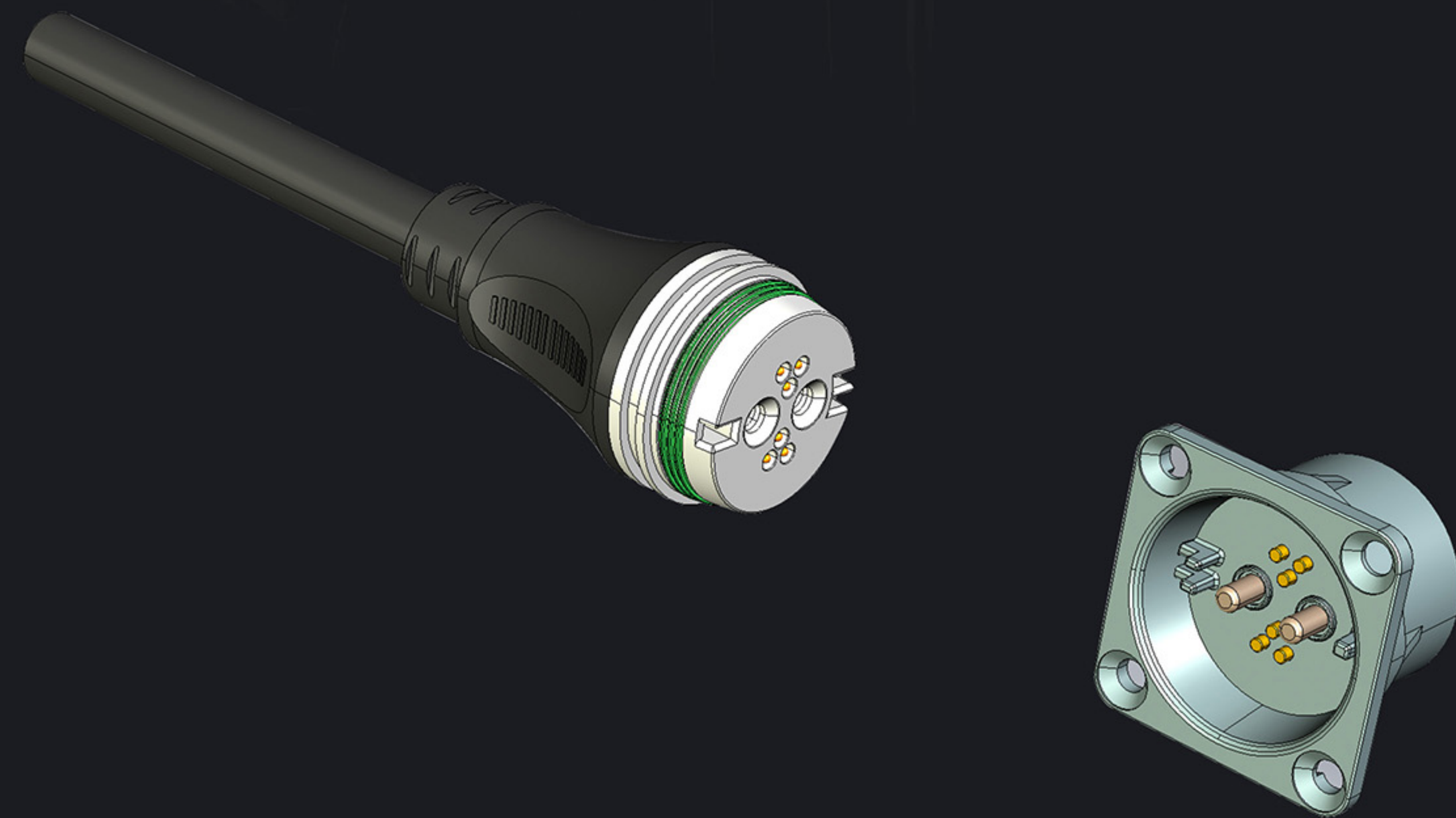
Contact impedance: 30mΩ MAX

Insulation: 500V 100MΩ Min



# Power

## PD26WX



Rated voltage: 60V DC

Rated current: Signal 2A Max;Power 30A Max

Rated Temperature: -25°C-+80°C

IP Rating: IP67

Mating Cycles: 2500 times

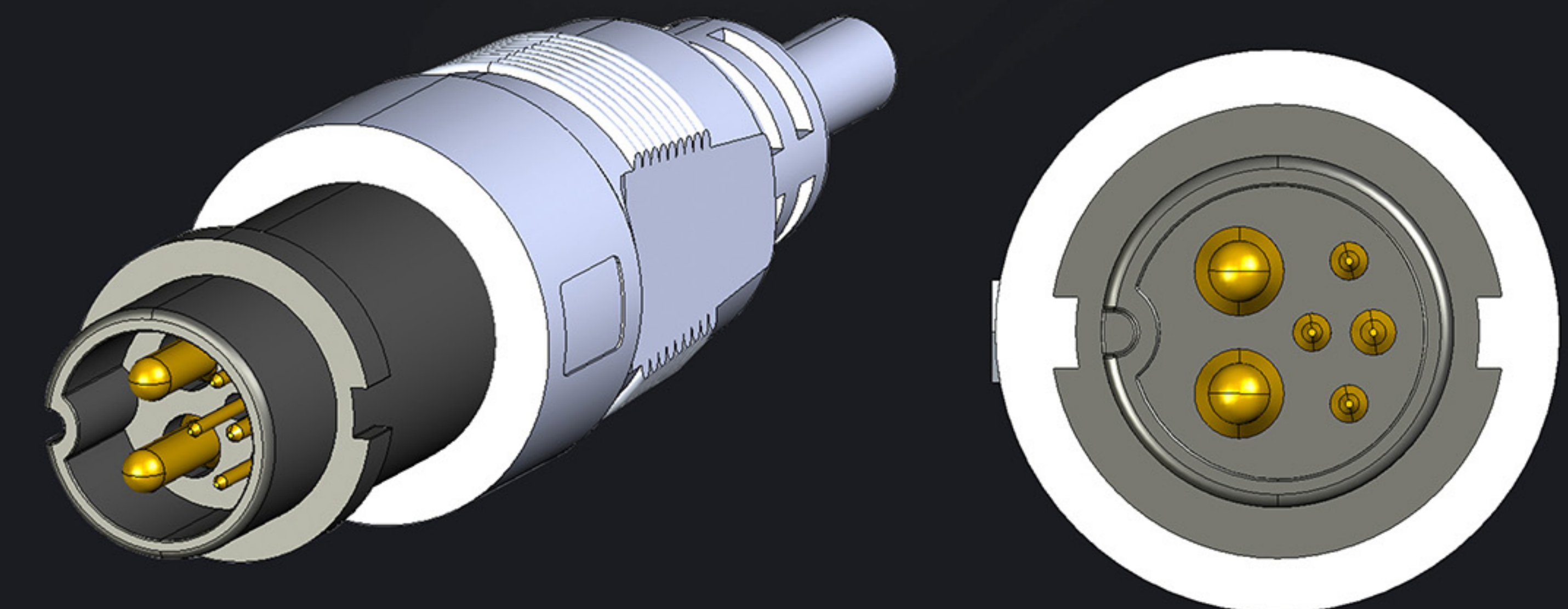
Contact impedance: 20mΩ MAX

Insulation: 500V 100MΩ Min

Matching size 57.2mm

# Power

## PA24WM



Rated voltage: 48V AC/60V DC

Rated current: Signal 2A Max;Power 20A Max

Rated Temperature: -25°C-+80°C

IP Rating: IP66

Mating Cycles: 2500 times

Contact impedance: 30mΩ MAX

Insulation: 500V 100MΩ Min



# Power

## PB04XX



Rated voltage: 48V AC/60V DC

Rated current: 10A MAX

Rated Temperature: -25°C-+80°C

IP Rating: IP67

Mating Cycles: 2500 times

Contact impedance: 30mΩ MAX

Insulation: 500V 100MΩ Min

Matching size 49.61mm

# Power

## PD24XX



Rated voltage: 48V AC/DC

Rated current: Signal 2A Max;Power 20A

Rated Temperature: -25°C-+80°C

IP Rating: IP67

Mating Cycles: 200 times

Contact impedance: 30mΩ MAX

Insulation: 500V 20MΩ Min

Matching size 52.26mm



# Power

## PE26XX



Rated voltage: 60V DC

Rated current: Signal 2A Max;Power 30A Max

Rated Temperature: -25°C-+80°C

IP Rating: IP67

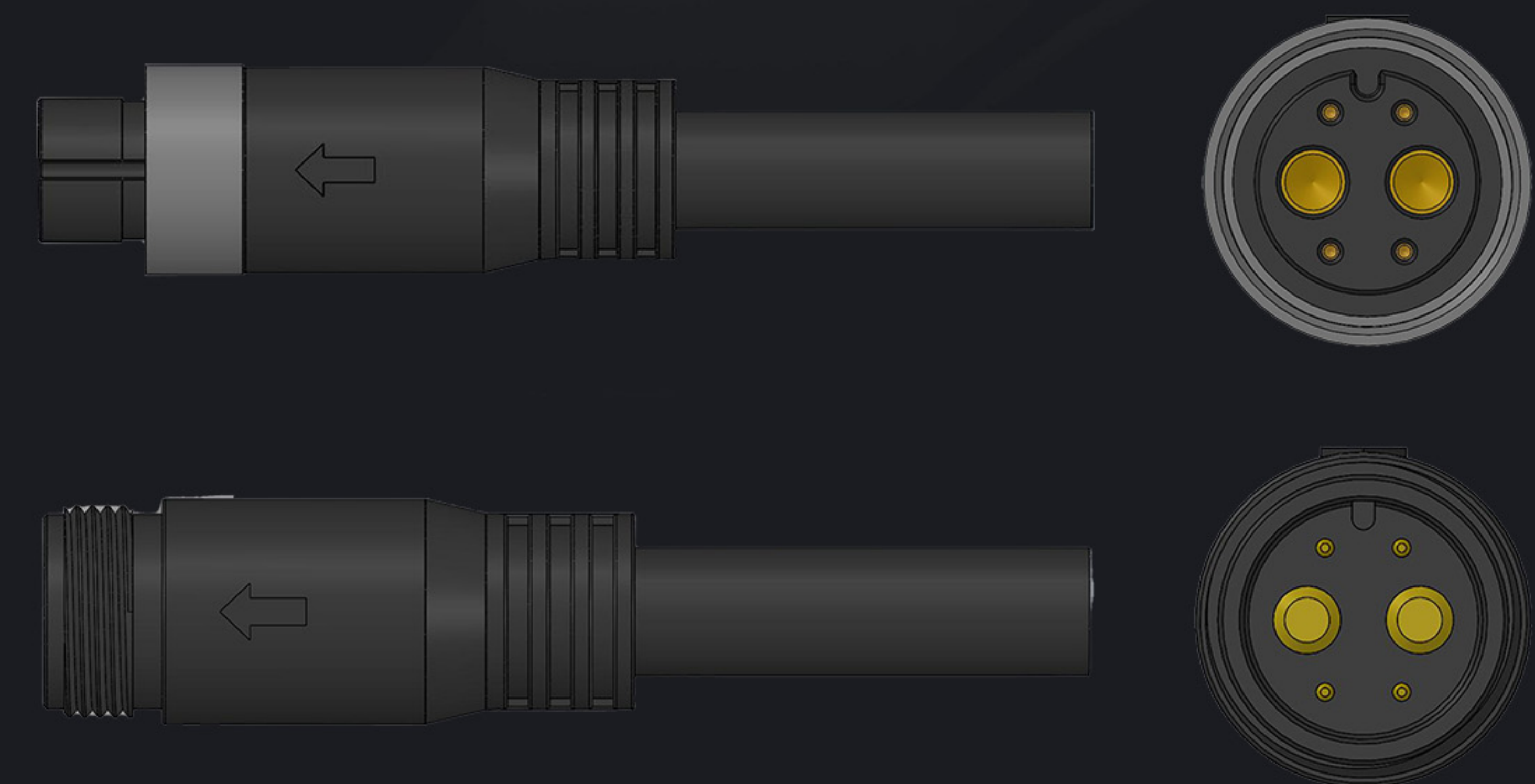
Mating Cycles: 2500 times

Contact impedance: Signal 30mΩ MAX, Power 20mΩ MAX

Insulation: 500V 100MΩ Min

# Power

## PA24XX



Rated voltage: 48V AC/60V DC

Rated current: 35APower

Rated Temperature: -25°C-+80°C

IP Rating: IP67

Mating Cycles: 500 times

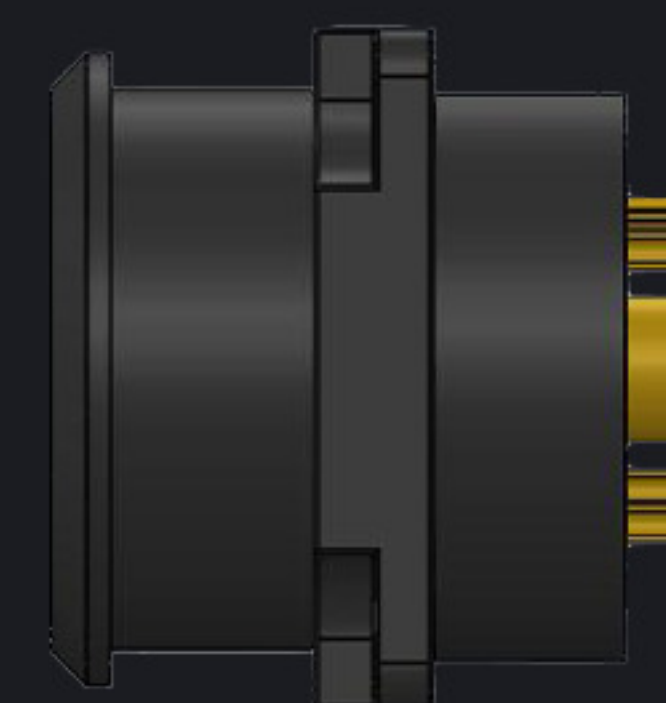
Contact impedance: 15mΩ MAX

Insulation: 500V 20MΩ Min



# Power

## PA25VX



Rated voltage: 48V AC/60V DC

Rated current: 70A Power

Rated Temperature: -25°C-+80°C

IP Rating: IP67

Mating Cycles: 3000 times

Contact impedance: 15mΩ MAX

Insulation: 500V 20MΩ Min



# Customizable Splitter



# Upcoming

