

# COMART

Innovative ODM reliable partner

---

ODM/OEM Division / Account Sales

# **CONTENT**

**About COMART**

**Our Factory in China**

**Our Factory in Vietnam**

**Our Products**

# Part 01

## About COMART

# COMPANY PROFILE

## [ Headquarters ]

Taipei, Taiwan

## [ Founded ]

1994

## [ Capitals ]

USD 14.000.000

## [ Employees ]

300+

## [ Factory location ]

Dongguan, China  
Bacgiang, Vietnam

## [ Certificate ]

ISO 9001:2015  
ISO 14001:2015  
BSCI





# Our Culture

## ► Our vision

Enrich your mobile life

## ► Our Mission

Enhance your life on the go with innovative designs, excellent quality, and outstanding service

## ► Our Philosophy

We explore the infinite possibilities of excellent mobile accessories, always putting our users and the environment first

## Our Values

[ Integrity ]



[ Accountability ]



[ Discipline ]



[ Innovation ]



[ Altruism ]



[ Teamwork ]





# Company history

**1994**

The company was established in Muzha, Taipei

**2005**

Established peripower brand

**2008**

Awarded multiple invention awards

**2014**

Won domestic and international product awards

**2016**

Won 19<sup>th</sup> Rising Star Award

**2019**

Established 1<sup>st</sup> Vietnam factory

**2023**

Established 2<sup>nd</sup> Vietnam factory



**1999**

Invested in Eternal Gain factory

**2007**

Purchased headquarters office in Taipei

**2011**

Merged with China factory

**2015**

Added agency business

**2018**

The 27<sup>th</sup> National Award of Outstanding SMEs

**2020**

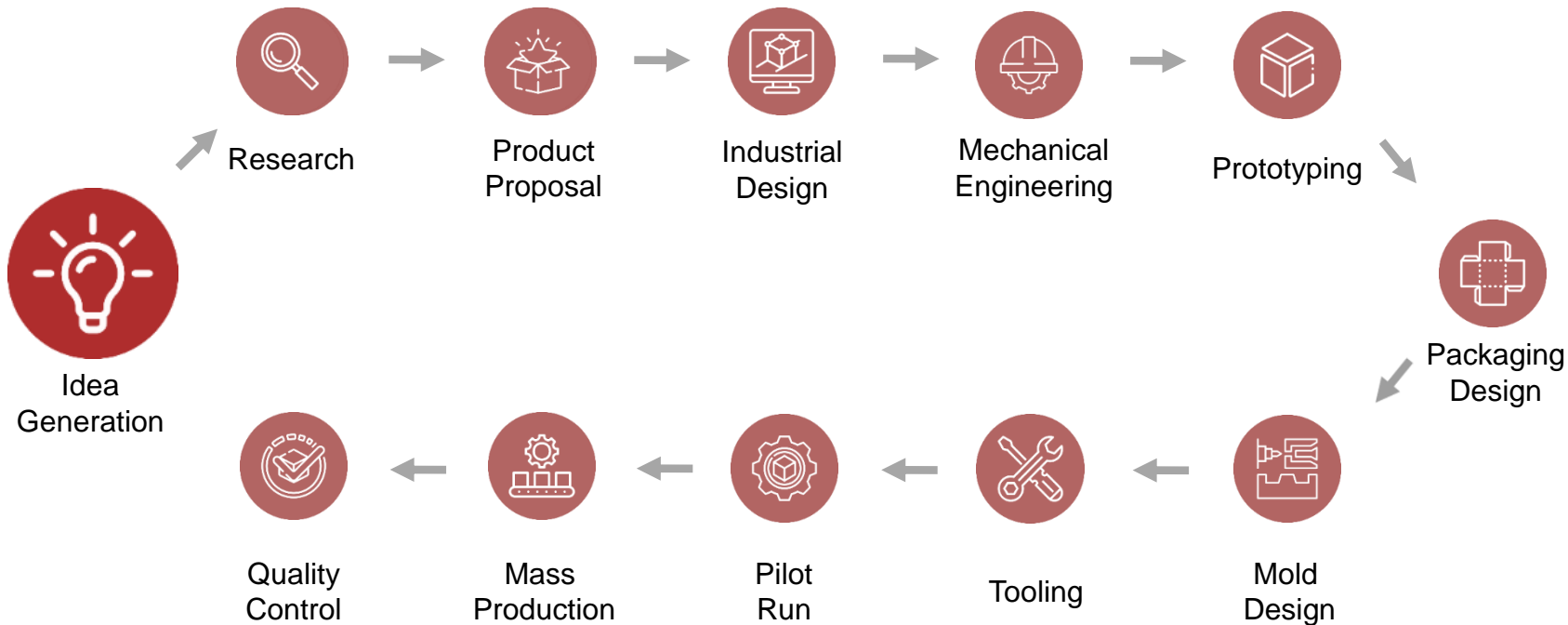
Established the HM Plus brand

**2024**

Constructed 3<sup>rd</sup> Vietnam factory



# Our Service-One Stop Shop Service





# Product Category



Car Mount  
Tablet Mount  
Wall Mount  
Desk Mount  
Water Resistant Case

## Mobile Accessories

## Life Accessories

Earphone Mount  
Monitor Stand  
TV Top Shelf  
Tripod



Car Coat Holder  
Cup Holder  
Meal / Storage Tray  
Dashcam Mount  
Car Charger  
Cable

## Car / Motorcycle Accessories

## EV Accessories

Car Mount  
Car Door Handle  
Table & Cup Holder  
EV Charging Adapter  
Sunshades  
Floor/Trunk Mat  
Organization







# Awards

COMART consistently strives for continuous improvement, earning numerous awards for business and products.





# Worldwide Patents



**WORLDWIDE PATENTS** **OVER 150 PATENTS GRANTED**



# Our Advantages



## All-in-one Service

We provide all-in-one service which enables all production stages to be completed in our factory.



## Sufficient Production Capacity

Two factories located in Dongguan, China and Bac Giang, Vietnam allow for production allocation.



## Qualified Material Supplier

We have strict supplier selection policy and management standard.



## Reliable Partner

Long-term experiences in ODM/OEM cooperation with world leading brands.



## Quality Assurance

We follow rigorous management processes, establishing a quality policy, adhering to quality procedures, and conducting quality tests, guarantee consistent output quality.



## User-centric dedication

Dedication and commitment to serving end-users with a focus on their needs and preferences.



## Part 02

# Our Factory in China



# Our Factory in China



Location: Dong Cheng District, Dong Guan City, Guang Dong Province, China





# Product Design Department

## R&D Section

Product design department consisted of R&D section and mold tooling section. R&D section is in charge of designing product appearance, mechanical, graphic, mold, electronics and preparing product specification approval report and BOM.





# Product Design Department

## Mold Tooling Section

Mold tooling section has wire electrical discharge machine, drilling machine, milling machine, planning machine, etc.







# Production Department

## Injection Section

We have 12 injection machines.







# Production Department

## Assembly Section

We have overall 34 equipment and 4 assembly lines.





# Quality Control Department

Environmental Protection  
Test

Reliability Test

Environmental Durability  
Test

ROHS Test

DROP Test

High Temperature Test

Low Temperature Test

Thermal Shock Test

Vibration Test





## Part 03

# Our Factory in Vietnam



# Introduction



The factory area is about 10,000 m2.



Located in Van Trung Industrial Park with modern infrastructure and convenient transportation.





# Production Department

## Injection Section

We have 34 injection machines.





# Production Department

## Assembly Section

We built 5 assembly lines in the assembly section.







# Production Department

## Warehouse Section

The area of the warehouse is about 1200 m2.





# QC Department

## Laboratory

We possess an in-house laboratory to ensure the reliability of our products.







# Equipment List

Category	Equipment	Quantity	Detail Model
Injection Equipment	Air compressor	1	空壓機 (FUSHENG)
	Fast-speed central granulators	3	快速集中粉碎機 (OG-3060-20FS)
	Storage Mixers	3	混合式儲料桶 (OSM-50)
	Fast-speed central granulators	2	快速集中粉碎機 (HGP-500)
	Storage Mixers	1	混合式儲料桶 (VCM-200)
	Mold cooling machine (Water)	2	水冷式冷水機 (OCM-5W)
	Mold cooling machine (Water)	1	水冷式冷水機 (OCM-5W)
	Mold temperature controller (Oil)	14	油式模溫機 (OMT-910-O)
	Mold temperature controller (Oil)	16	油式模溫機 (OMT-910-O)
	Hopper Dryer	20	乾燥機 (SHD-50EB)
	Hopper Dryer	16	乾燥機 (SHD-50E)
	Self-contained Hopper Loader	20	抽料機 (SAL-3U-E)
	Self-contained Hopper Loader	4	抽料機 (SAL-330)
	Self-contained Hopper Loader	12	抽料機 (SAL-330E-GB)
	Standard Swing-arm Robot	18	機械手 (SS-650-S1)
	Standard Swing-arm Robot	12	機械手 (P605V)
	Injection machine	3	注塑機 (MA860/260G)
		15	注塑機 (MA1200/370G)
		11	注塑機 (MA1600/540G)
		2	直立式注塑機 Vertical injection machine
		1	注塑機 (MA2000/770G)
		1	注塑機 (MA3000/1800G II)
		1	注塑機 (MA3600/2250G II)
	Conveyor	9	注塑線輸送帶 (2300 x 460 x 1650 mm)
	Cabinet Dryers	1	箱型乾燥機(CD-9)
	Hand Pallet Truck	1	叉車 BF-III (550*1220)



# Equipment List

Category	Equipment	Quantity	Detail Model
Assembly Line Equipment	Ultrasonic Welding machine	1	超聲波焊接機
	High Frequency Welding Machine	2	高周波熔接機 (YJ-TJ)
	Pad Printing Machine	2	移印機 (TIC-183SD)
	Conveyor	5	裝配線輸送帶 14m(L) *0.6m(W)
	Hand Pallet Truck	2	叉車 BF-III (550*1220)
	Hand Pallet Truck	1	叉車 NIULI
Warehouse Equipment	Hand Pallet Truck	2	叉車 BF-III (550*1220)
	Hand Pallet Truck	2	叉車 NIULI
	Electric pallet stacker	1	堆高機 (CDD16-950)
	Electric pallet stacker	1	电动叉车 CPD20 – A3H4-M
	Dehumidifier	2	除湿机 CF30SD
Laboratory Equipment	Abrasion Test Machine	1	酒精耐磨試驗機 (ZL339)
	Colorimeter	1	色差儀 (JZ300)
	Push-pull Testing Machine	1	推拉力試驗機 (NK500)
	Gauss Meter	1	高斯計 (KANETEC TM801EXP)
	Durometer	1	硬度檢測設備 (Teclock GS -709N)
	Salt Spray Test Machine	1	鹽水噴霧試驗機 (KJU-952B)
	Temperature & Humidity Chamber	1	恆溫恒濕試驗機 (LX-150L)
	RoHS Halogen-Free/Xrf	1	X 螢光光譜儀 (RoHS 測試儀) Ux-220
	UV Aging Test Chamber	1	耐黃變測試機 UV-225
	Melt Flow Indexer	1	溶體流動速率儀 GX-210
	Electro-dynamic Vibration Test Machine	1	電磁振動試驗機 HD-G809-600-3
	Measuring Instrument	1	手动影像測量儀 DL4030E
	Color Light Box	1	光源对色灯箱 TILO P60+ (D65, TL84, F, UV. CWF, TL83)
	RJS Inspector D4000 Laser	1	条码验证器 RJS D4000L

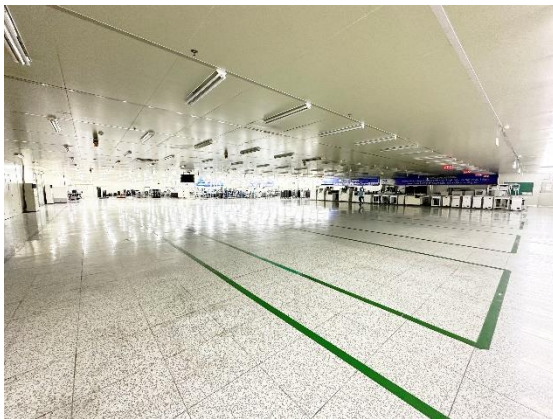


# Expansion plan

- The 3<sup>rd</sup> factory will primarily focus on stamping and die casting production.
- Utilizing equipment ranging from 80 tons to 150 tons.



The 3rd factory is scheduled to be completed and commence production in 2024 Q4



The total land area is 6,635 m<sup>2</sup>, with the plant area occupying 4,788 m<sup>2</sup>



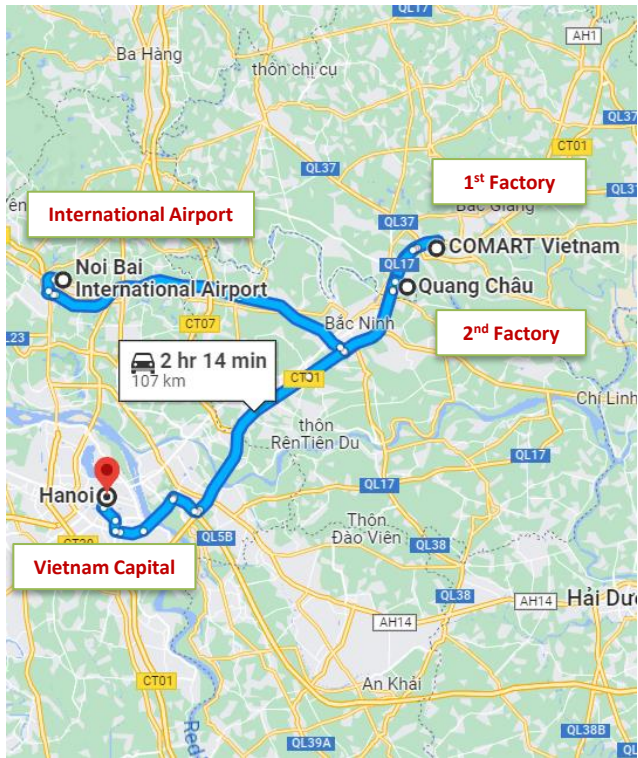
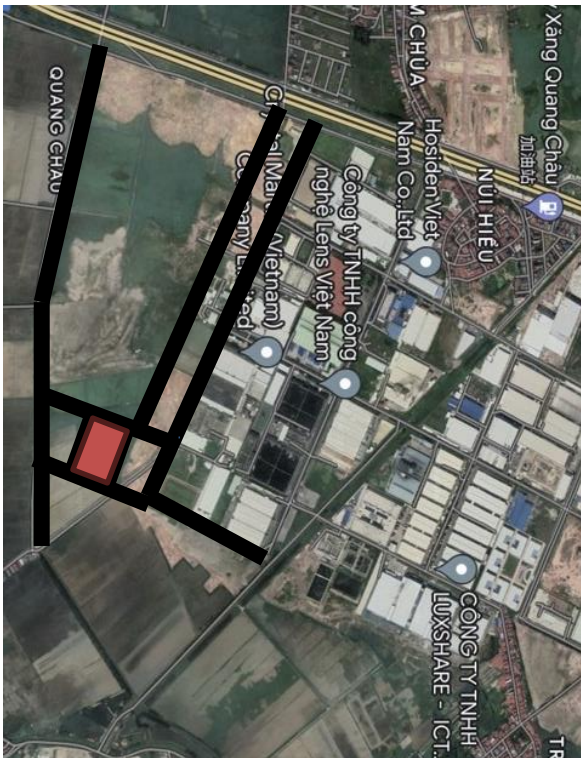


# Expansion plan



Location: Quang Chau Industrial Park, Quang Chau commune, Viet Yen district, Bac Giang province, Vietnam



[illegible]



# 4th factory-Equipment list

Category	Equipment	Quantity	Specification	Estimated time
Metal Processing	Aluminum Alloy Die Casting Machine	2	250 tons / 200 tons	2024 Q4
	Zinc Alloy Die Casting Machine	2	150 tons / 120 tons	2024 Q4
	Stamping Machine	2	80 tons / 110 tons	2024 Q3
	CNC Machine	5		2024 Q4
Injection Molding Area	Injection Molding Machine	34	45 tons * 2 86 tons * 3 120 tons * 15 160 tons * 11 200 tons * 1 300 tons * 1 350 tons * 1	Ready
			800 tons * 2	
	Mixer	5		2025 Q4
	Mixer (Large)	2		Ready
	Crusher	2		2025 Q4
Secondary Processing Area	Crusher (Large)	3		Ready
	Pad Printing Machine	1		2025 Q4
	Laser Engraving Machine	2		Ready
	Assembly Line	3		Ready
Assembly Area	High Frequency Welding Machine	8		Ready
		2		Ready
Tooling Room	Milling Machine	1		2025 Q4
	Grinding Machine	1		
	Spark Erosion Machine	1		
	Wire Cutting Machine	1		
	Punching Machine	1		
	Laser Welding Machine	1		



# Part 04

## Our Products



# Car Seat Headrest Coat Hanger

## Features:

- Detachable wings design to save space when the hanger is not being used.
- The foam on the wings is non-slip and gently supports delicate garments.
- The hanger is detachable from the mount and can be used in office or houses with the extra hook.
- Extendable arm length allows fixing on most headrest posts.
- Extra buckle to safely lock the arm on the posts.



Part number: 6LG9900001, 6MT0300056

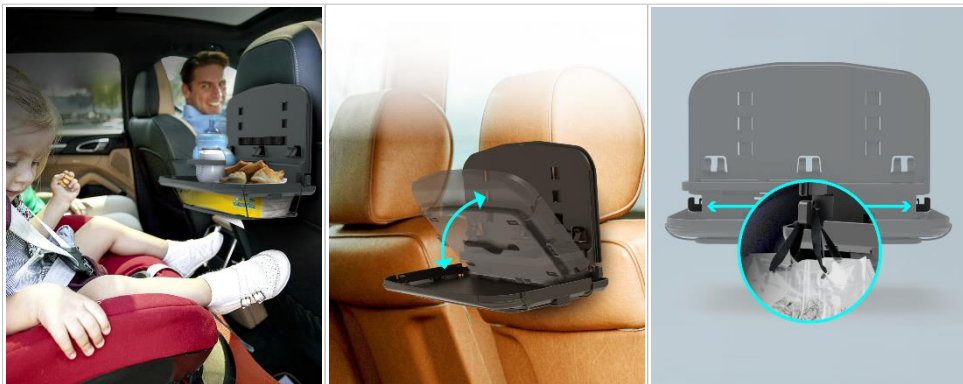




# Car Back Seat Organizer with Foldable Food Tray

## Features:

- Easy-to-use straps for easy installation.
- Simply open the tray to place food or other items.
- Open the drink holders to put the drinks.
- Three secure clips on the back panel to hold your phone or tablet in place.
- The bottom of the tray has a pull-out compartment for storing tissue (the opening will face downwards when the tray is open).
- Stow when not in use.



Part number: 7PP6MT0055



# Tablet Headrest Mount

## Features:

- Extendable arm length allows fixing on most headrest posts.
- Additional buckle ensures the arm stays firmly in place.
- Easily attach and remove the holder with the detachable mounting arm.
- Suitable for 5.5"-12.9" smartphones/tablets.
- Post diameter: 10-16 mm.
- Distance between the posts: 120-150 mm.
- Clamping width: 162-230 mm.





# Tesla Door Handle

## Features:

- The concave design prevents the door handle from freezing and being unable to open during winter.
- Enhanced handle operation for effortless door opening.
- Self-adhesive tape, no drilling or cutting required.
- Exclusively for Tesla Model 3 & Model Y
- Design: Classic Comfort Grip & Sleek Flap
- Finishing: Matte & Glossy

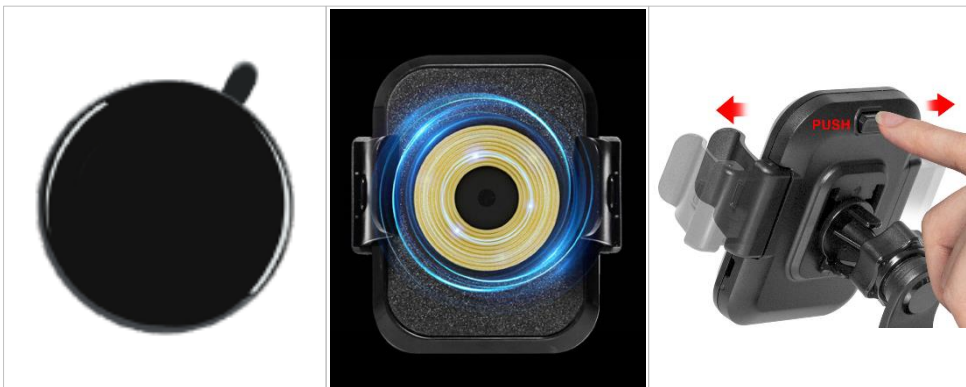




# Wireless Charging Holder with Dashboard Mount

## Features:

- The holder complies with standard wireless charging.
- A 10W output supports fast wireless charging.
- Sticky material suction cup is perfect for mounting on dashboard or other rough surfaces.
- Easily bend the flexible arm to any angle.
- Input: 5V, 1.7A; 9V, 1.7A (max).
- Output: 5V, 1A; 9V, 1.1A (max).
- Suitable for 4.7-6.9" devices.
- Clamping width: 58-89 mm.



Part number: 6MT0600582, 6MT0100946

# MagSafe Adjustable Metal Stand for Dashboard/Screen

## Features:

- Dual Axis Adjustable Design & 360° Rotatable Head & 360° Rotatable Base, effortlessly adjust the angel.
- Designed for MagSafe smartphones, includes a ring metal plate for non-MagSafe devices.
- The adhesive base ensures a strong and reliable attachment.
- Ideal for dashboard and EV screens, enhancing convenience and safety.

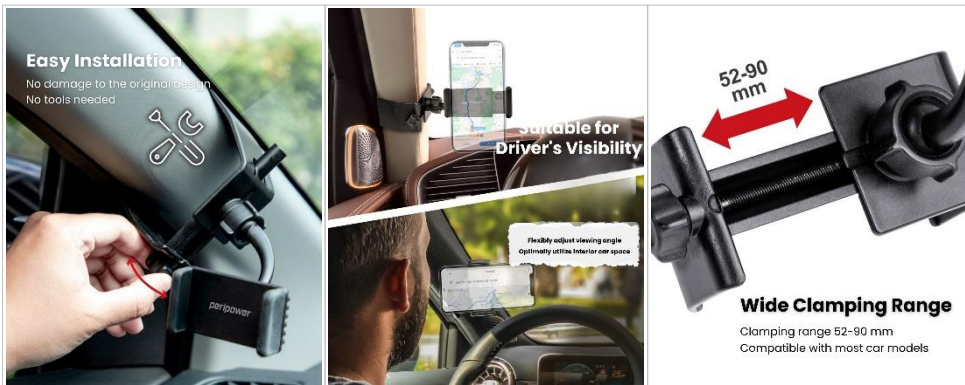




# A-Pillar Smartphone Mount

## Features:

- Quick installation, no tools nor adhesive required.
- Optimizes car interior space, aligns with the driver's view.
- Holder clamping range 52-90 mm, suitable for most car models.
- Designed for the A-Pillar, overcoming its tilt.
- Easily adjust to obtain the best viewing angle with the 360° swivel ball joint.







# Anti-block Swing Arm Air Vent Mount

## Features:

- Anti-fall hook clip ensures secure attachment.
- U-shaped air vent clip design fits vents with horizontal or vertical blades.
- Rotatable swing arm prevents obstruction of air vents and driving view.
- Suitable for 4.7"-6.9" devices.
- Clamping width: 45-95 mm.



Part number: 6MT0600179, 4MT1400408, 4MT0400026



# CD Slot Mount

## Features:

- Easily insert it into the CD slot and tighten the screw for security.
- Offers 360° rotation for versatile positioning.
- Wrapped in silicone for better grip and protection.
- Compatible CD slot size: CD slot height: 4-15 mm/ CD slot width: >112 mm.
- Suitable for 4"-6" devices.
- Clamping width: 54.5-85 mm.





**Thank you**