

A detailed line art illustration of a car, showing the interior from the driver's perspective and the exterior from the front. The illustration is rendered in white lines on a dark red background. The interior shows the steering wheel, dashboard, and center console. The exterior shows the front grille, headlights, and bumper. The car is positioned centrally, with the interior view taking up the upper half and the exterior view taking up the lower half.

Mobile Accessories  
Design  
Manufacture

**COMART**

Innovative ODM reliable partner

怡業股份有限公司  
COMART CORPORATION

# Phone Mounts



## Dashboard mount

6MT0600179 & 6MT0100371

- Sticky suction cup is perfect for mounting on dashboard or other rough surfaces
- Suitable for 4"-6" devices
- Clamping width: 45-95 mm



## Dashboard mount with gravity holder

6MT0600531 & 6MT0100896

- Simply slide your phone into the holder, and the weight of the phone will activate the holder to keep it in place
- Sticky suction cup for mounting on dashboard or other rough surfaces
- Suitable for 4.5"-6.2" devices
- Clamping width: 63-90 mm



## Dashboard mount with spring holder

6MT0600207 & 6MT0100896

- Convenient for one-handed operation, allowing quick mounting and releasing of the device
- Sticky suction cup is perfect for mounting on dashboard or other rough surfaces
- 360° rotation available
- Suitable for 4"-6" devices
- Clamping width: 54.5-85 mm



## Flexible dashboard mount

6MT0600153 & 6MT0100420

- Easily bend the flexible aluminum rod to any angle
- Sticky suction cup is perfect for mounting on dashboard or other rough surfaces
- Suitable for 4"-6.5" devices
- Clamping width: 40-105 mm

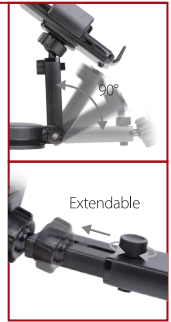




## Extendable arm dashboard mount

6MT0600512 & 6MT0100934

- Holder with adjustable support feet can fit bigger devices
- 90° adjustable arm for vertical adjustment of your device
- Extendable arm design allows you to adjust for closer device viewing
- Sticky suction cup for mounting on dashboard or other rough surfaces
- Suitable for 4.7"-6.9" devices
- Clamping width: 58-90 mm



## Windshield mount

6MT0600204 & 6MT0100337

- Convenient for one-handed operation, allowing quick mounting and releasing of the device
- 3 adjustable holder wings
- Suitable for 4"-5.9" devices
- Clamping height: 123-163 mm
- Clamping width: 46-80 mm



## Windshield mount

6MT0600512 & 6MT0100992

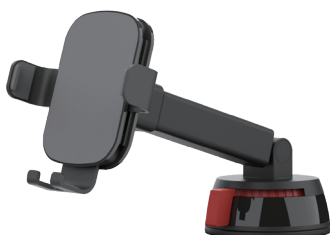
- Securely install the TPU suction cup mount on car windshield
- Quick release button for easy attachment/removal of device
- Easily bend the flexible aluminum rod to any angle
- 360° rotatable connector for vertical or horizontal viewing mode
- Suitable for 4.7"-6.9" devices
- Clamping width: 58-90 mm



## Dashboard mount with spring holder

6MT0600532 & 6MT0101008

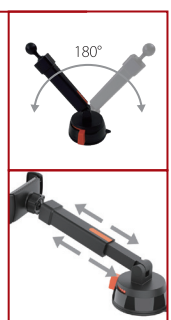
- Sticky suction cup is perfect for mounting on dashboard or other rough surfaces
- Easily bend the flexible aluminum rod to any angle
- Quickly mount and release your device with the spring
- Suitable for 4.7"-6.9" devices
- Clamping width: 65-92 mm



## Extendable arm dashboard mount with adjustable gravity holder

6MT0600590 & 4MT1400408 & 6MT0100994

- Adjustable arms for access to device side buttons
- Simply slide your phone into the cradle to hold it
- 180° adjustable arm is extendable for extended viewing
- Sticky suction cup
- Suitable for 4.7"-6.9" devices
- Clamping width: 72-96 mm





## Magnetic MagSafe adhesive mount

4MT1300043 & 4MT0200085

- Compatible with MagSafe phones. Non-MagSafe phones can use the ring metal plate
- 3M sticker on the bottom fixes the device on the dashboard
- The notches on the base help fit the slightly curved part of the dashboard
- Swivel ball joint allows 360° angle adjustment



## Magnetic MagSafe air vent mount

4MT1300043 & 4MT0400025

- Compatible with MagSafe phones. Non-MagSafe phones can use the ring metal plate
- Securely attaches to most horizontal and vertical vents, keeping your device in place while driving
- Soft silicone on the vent clip prevents damaging the air vent



## Anti-block swing arm air vent mount

6MT0600179 & 4MT1400408 & 4MT0400026

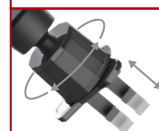
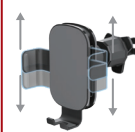
- Tighten clips of the air vent mount with knob
- Rear hooks for secure blade hold
- U-shaped design clamps vertical blade
- Rotatable arm avoids vent blockage
- Clamping width: 45-95 mm ; fits 4.7"-6.9" devices



## Vertical air vent mount with adjustable gravity holder

6MT0600590 & 4MT1400408 & 4MT1400409

- Compatible with most vertical vents
- Adjustable arms for access to device side buttons
- Simply slide your phone into the cradle to secure it
- Double eagle hooks and silicone pad stabilizes and secures
- Suitable for 4.7"-6.9" devices
- Clamping width: 72-96 mm



## Air vent mount

6MT0600527 & 6MT0400083

- Suitable for most air vents
- Simply mount onto the air vent by adjusting the clamps and pressing the lever to securely lock it in place
- Suitable for 4.7"-6" devices
- Clamping width: 65-92 mm







## Clamp mount with one touch holder

6MT0600529 & 6MT1400008

- Clamp steadily on dashboard, desk or cabinet
- Just screw and mount, no tools required
- 180° adjustable arm
- One touch design for quickly mounting and releasing the device
- Suitable for 4.7"-6" devices
- Clamping width (holder): 65-87 mm
- Clamping range (mount): 1-34 mm



## Clamp mount

6MT0600145 & 6MT1400018

- Clamp steadily on dashboard, desk or cabinet
- Just screw and mount, no tools required
- Easily bend the flexible arm to any angle
- Clamping width (holder): 50-95 mm
- Clamping range (mount): 1-34 mm



## Dashboard clip mount

6MT0100424

- Convenient for one-handed operation, allowing quick mounting and releasing of the device
- The anti-slip rubber pads inside the clamps will firmly hold your device
- Sticky suction cup is perfect for mounting on dashboard or other rough surfaces
- Suitable for 3.5"-7" devices
- Clamping width: 42-113 mm



## CD slot mount

6MT0600207 & 6MT9900041

- Easily insert into the CD slot, and tighten the screw to fix it in place
- 360° rotation available
- Wrapped in silicone for better grip and protection
- Compatible CD slot size: height: 4-15 mm ; width: >112 mm
- Clamping width: 54.5-85 mm ; fits 4.7"-6.9" devices



# Tablet Mounts



## Headrest mount for smartphone & tablet

6MT0700034 & 6MT0300056

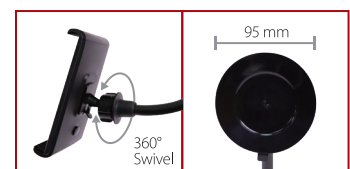
- Extendable arm length allows fixing on most headrest posts
- Extra buckle to safely lock the arm on the posts
- Detachable mounting arm for easily attaching and removing the holder
- Quickly mount and release your device with the spring holder
- Suitable for 5.5"-12.9" smartphones / tablets
- Post diameter: 10-16 mm
- Distance between the posts: 120-150 mm
- Clamping width: 162-230 mm



## Windshield heavy duty mount for smartphone & tablet

6MT0700034 & 6MT0101010

- 95 mm heavy-duty suction cup mount reliably supports up to 1 kg, ensuring steadfast stability and strength
- Securely install on car windshield
- Multiple adjustment with the aluminum rod and 360° rotatable ball head
- Suitable for 5.5"-12.9" devices
- Clamping width: 160-230 mm





## Windshield mount for tablet

6MT0600186 & 6MT0100407

- Dual suction cup for better stability
- Easily bend the flexible arm to any angle
- Suitable for 7"-10" tablets
- Clamping height: 120-180 mm



## Headrest mount for tablet

6MT0600186 & 6MT0300022

- Detachable mounting arm for easily installing and removing the holder
- No tools required
- Suitable for 7"-10" tablets
- Clamping height: 120-180 mm



## Headrest mount for smartphone & tablet

6MT0700034 & 6MT0300025

- Extended arm allows the tablet to be placed between two headrests for multiple passenger viewing
- Adjustable knob to adjust to the best viewing angle
- Quickly mount and release your device with the spring holder
- Suitable for 5.5"-12.9" smartphones / tablets
- Clamping height: 160-230 mm



## Dashboard mount for smartphone & tablet

6MT0100381

- Sticky suction cup is perfect for mounting on dashboard or other rough surfaces
- Extendable holder can be easily adjusted to fit different sizes of smartphone and tablet
- Suitable for 4"-10" smartphones / tablets
- Clamping height: 53-213 mm



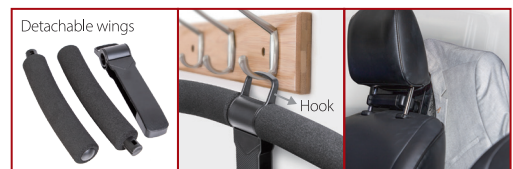
# Featured Products



## Car Seat Headrest Coat Hanger

6LG9900001 & 6MT0300056

- Detachable wings design to save space when the hanger is not being used
- The foam on the wings is non-slip and gently supports delicate garments
- The hanger is detachable from the mount and can be used in the office or at home with the extra hook
- Extendable arm length allows fixing on most headrest posts
- Extra buckle to safely lock the arm on the posts
- Post diameter: 10-16 mm
- Distance between the posts: 120-150 mm



## MagSafe magnet ring sticker and MagSafe magnet mount

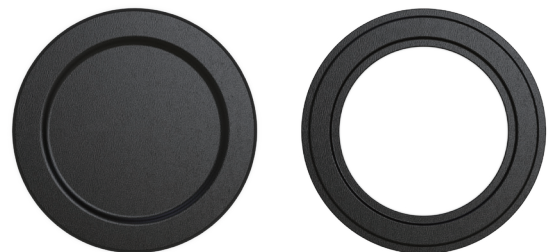
6MT1300121 & 6MT1300123

### MagSafe magnet ring sticker

- Turn your smartphone or case into MagSafe model
- Compatible with MagSafe accessories
- Fine leather texture and strong magnets design

### MagSafe magnet mount

- Mount your smartphone anywhere using this MagSafe magnet mount
- Add the COMART MagSafe Magnet Ring Sticker for non-MagSafe smartphone
- Handy mount for different places







## Mouse cord mount

6MT0100965

- Sticky suction cup
- The flexible arm provides the user with stability and control while enabling free movement of the mouse
- Suitable for gaming or to be used at home, office, etc.



## 3-IN-1 MagSafe wireless charging stand

8CRC140001

- Charge your iPhone, Apple Watch, and AirPods simultaneously.
- Elegant design crafted from high-quality aluminum alloy
- Non-slip silicone base keeps the stand securely in place
- Magnetic wireless charging
- Foldable design for space-saving and convenient portability
  - Input (USB-C): 5V-3A/9V-3A
  - Wireless Output:
    - Mobile Phone: 5W/7.5W/10W/15W
    - AirPods: 5W
    - Apple Watch: 2.5W



## Apple Watch display stand

6MT0100444

- Sticky suction cup is perfect for mounting on dashboard or other rough surfaces
- A hole is reserved for the Apple Watch magnetic charging cable that allows you to display the watch with a comfortable vertical view while charging
- \* The Apple Watch magnetic charging cable is not included



## TV/PC screen tray mount

6MT9900121

- Easy to install by resting the tray on top of the TV/PC screen and tightening the support piece to the back of the screen
- Accommodates different screen thickness
- Can be attached to TV/PC screen to provide storage for various items





# Bike Mounts



## Bike mount for smartphone and GoPro

6MT0600252 & 6MT1100150

- Hold your smartphone securely with four-sided clamps
- Security lock prevents the wings from opening accidentally
- Can mount both smartphone and GoPro at the same time
- Fix the mount in the middle of the handlebar for ideal viewing
- Suitable for 4"-6.2" devices
- Clamping width (holder): 48-92 mm
- Clamping height (holder): 121-165 mm
- Compatible handlebar: 31.8 mm dia.



## Smartphone bike mount

6MT0600252 & 6MT1100149

- Hold your smartphone securely with four-sided clamps
- Security lock prevents the wings from opening accidentally
- Innovative quick release mounting system
- Easy to fix on the handlebar without tools
- Suitable for 4"-6.2" devices
- Clamping width (holder): 48-92 mm
- Clamping height (holder): 121-165 mm
- Compatible handlebar: 21-28 mm dia.



## Motorcycle rear mirror stem phone mount

7PP6MT0058 & 4MT1400417 & 4QT9900261

- Easy installation on your motorcycle's rear mirror stem
- Spring-loaded quick-release design
- Adjustable width with a rotary knob (clockwise to tighten, counterclockwise to loosen)
- Easily install on the inner side of the left handlebar without disassembling parts, ensuring a firm grip and efficient space utilization
- Clamping width: 65-90 mm





## Water resistant bag with scooter/bike mount

6PT1200394 & 6MT1100147

- Suitable for smartphones with dimensions up to 180 x 105 mm (5.2"-6.4" devices)
- IPX8 water resistant rating standard
- Equipped with dual self-adhesive fastener closures, provides extra security to keep your phone safe from rain and moisture
- Quick release mounting design
- Screw the knob to tighten the strap on the handlebar
- Anti-slip checked pattern to prevent sliding
- Compatible handlebar: Ø18-40 mm



## Scooter/Bike handlebar mount

6MT0600252 & 6MT1400050

- Easily install the mount onto your scooter/motorcycle left handlebar with a screw driver
- Swivel ball joint allows 360° angle adjustment
- Suitable for handlebars with diameter between 28-34 mm
- Clamp your smartphone securely with four-sided clamps
- Security lock prevents the horizontal wings from opening accidentally
- Suitable for 4.7"-6.9" devices
- Clamping width: 48-92 mm



## Universal smartphone bike mount

6PT1200390 & 6MT1100113

- Suitable for smartphones with dimensions up to 159 x 78 x 8 mm (5.5" devices)
- An opening on the bottom of the case provides access to plug in charger
- Compatible bolt: 12-25 mm / 25-32 mm dia.



Access to plug in charger



## Universal smartphone motorcycle mirror mount

6PT1200390 & 6MT1100097

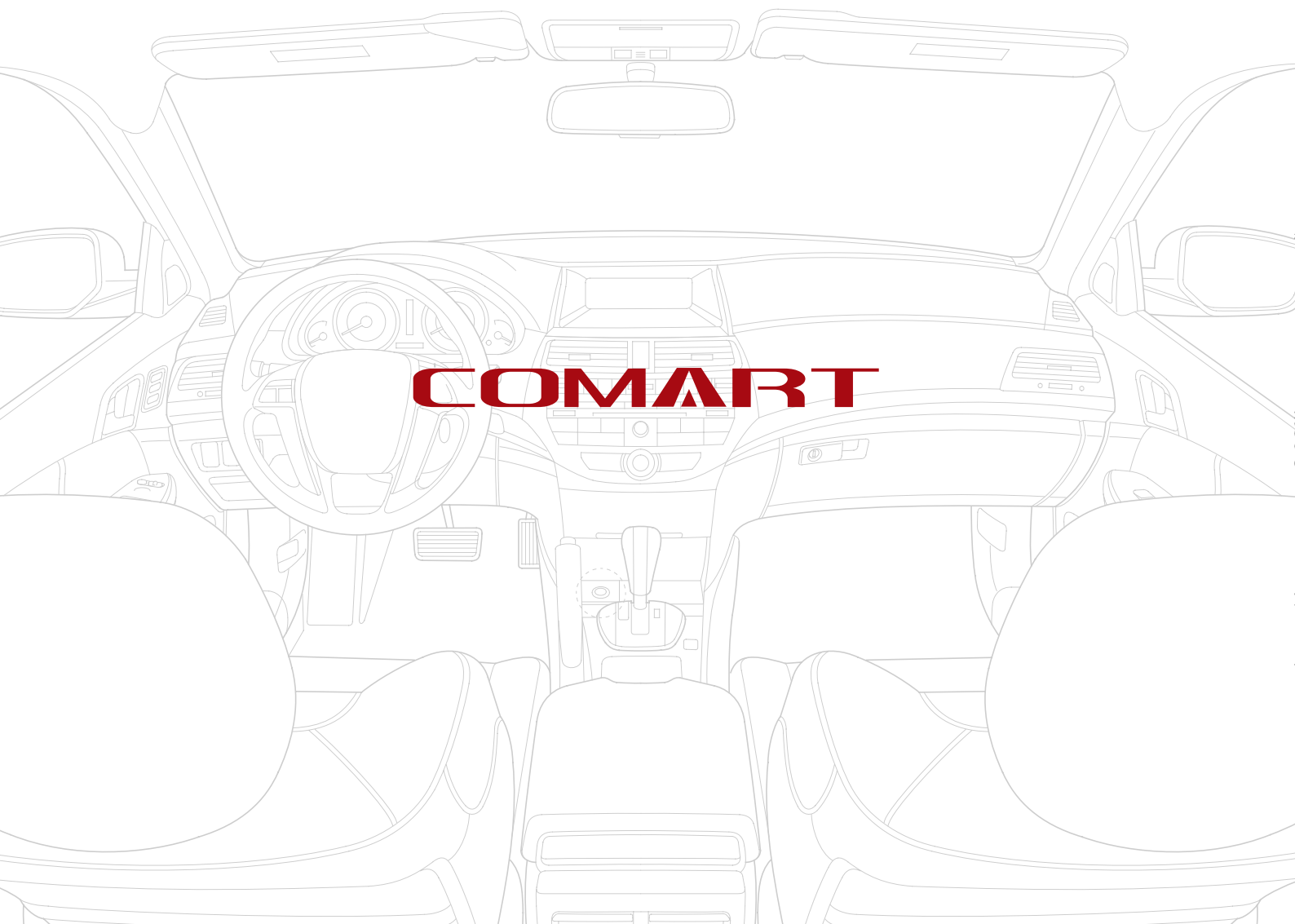
- Suitable for smartphones with dimensions up to 159 x 78 x 8 mm (5.5" devices)
- An opening on the bottom of the case provides access to plug in charger
- Mount on the rear mirror of the motorcycle
- Easy to adjust to desired angle with the adjustable arm
- Compatible bolt: M8/M10



M8/M10



Adjustable



All registered trademarks belong to their respective owner.

### 怡業股份有限公司

地址：231028 台灣新北市新店區寶橋路235弄12號3樓  
電話：+886-2-8911-1133  
Email: sales@comart.com.tw

### COMART CORPORATION

Add: 3F., No.12, Ln. 235, Baoqiao Rd., Xindian Dist.,  
New Taipei City, 231028, Taiwan  
Tel: +886-2-8911-1133  
Email: sales@comart.com.tw

### 東莞恒群塑膠有限公司

地址：中國廣東省東莞市東城街道溫周路18號  
電話：+86-769-23064133  
Email: ywb3@heng-qun.com

### ETERNAL GAIN PLASTICS CO., LTD.

Add: No.18, Wen Zhou Road, Dong Cheng District, Dong Guan City,  
Guang Dong Province, 523118, China  
Tel: +86-769-23064133  
Email: ywb3@heng-qun.com

### 越南怡業責任有限公司

地址：越南北江省越安縣雲中工業區CN06-06區  
電話：+84-204-3561133  
Email: henry\_lai@comart.com.tw

### COMART VIETNAM CO., LTD.

Add: Lot CN 06-06, Van Trung Industries Zone, Viet Yen  
District, Bac Giang Province, 26171, Vietnam  
Tel: +84-204-3561133  
Email: henry\_lai@comart.com.tw

Innovative ODM reliable partner

