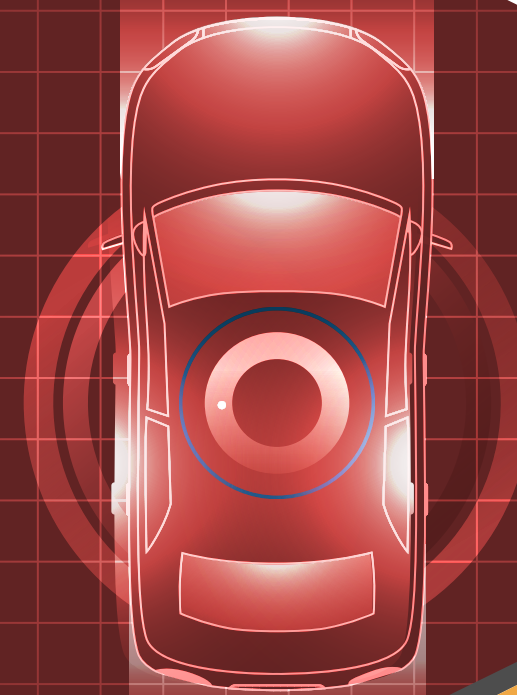




KINKO

今國光學工業股份有限公司
KNIKO OPTICAL CO.,LTD.

2024 CATALOG



📍 NO. 91, LN. 562, SEC. 9, XIANGSHANG RD., WUQI DIST.,
TAICHUNG CITY 435, TAIWAN (R.O.C.)

☎ +886-4-26305679

🌐 http://www.kinko-optical.com/eng_index.asp



KINKO

PROFILE

Kinko was founded in June 1980 at Wuqi Dist, Taichung City, Being an optical component and optical lens unit professional manufacturer with over 43 years of experience, Kinko designs develops, and produces with one-stop process in-house. a variety of optical lenses produced by Kinko has gained global brand approval and distributed worldwide.

Mr. Kent Chen, the CEO, has the concept of "Focus on Taiwan with Projection to the World"



KINKO

OVERVIEW

Established : 19th June 1980

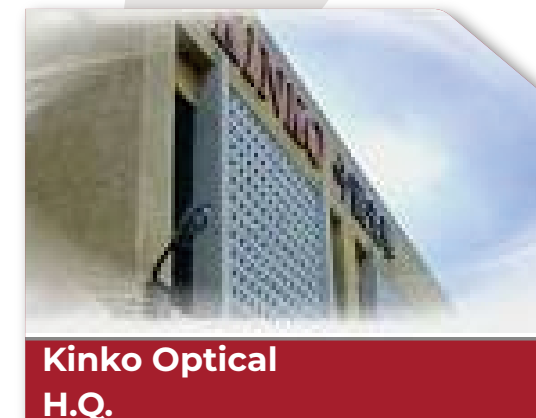
Main Business Segments:

- Polished Glass
- Molding Glass Lens
- Lens Units (From Design to MP) □ - Far Infrared Lens Units
- Tool Manufacture, Black parts molding

Certification : ISO9001, ISO14001, ISO45001, IATF 16949, SA8000

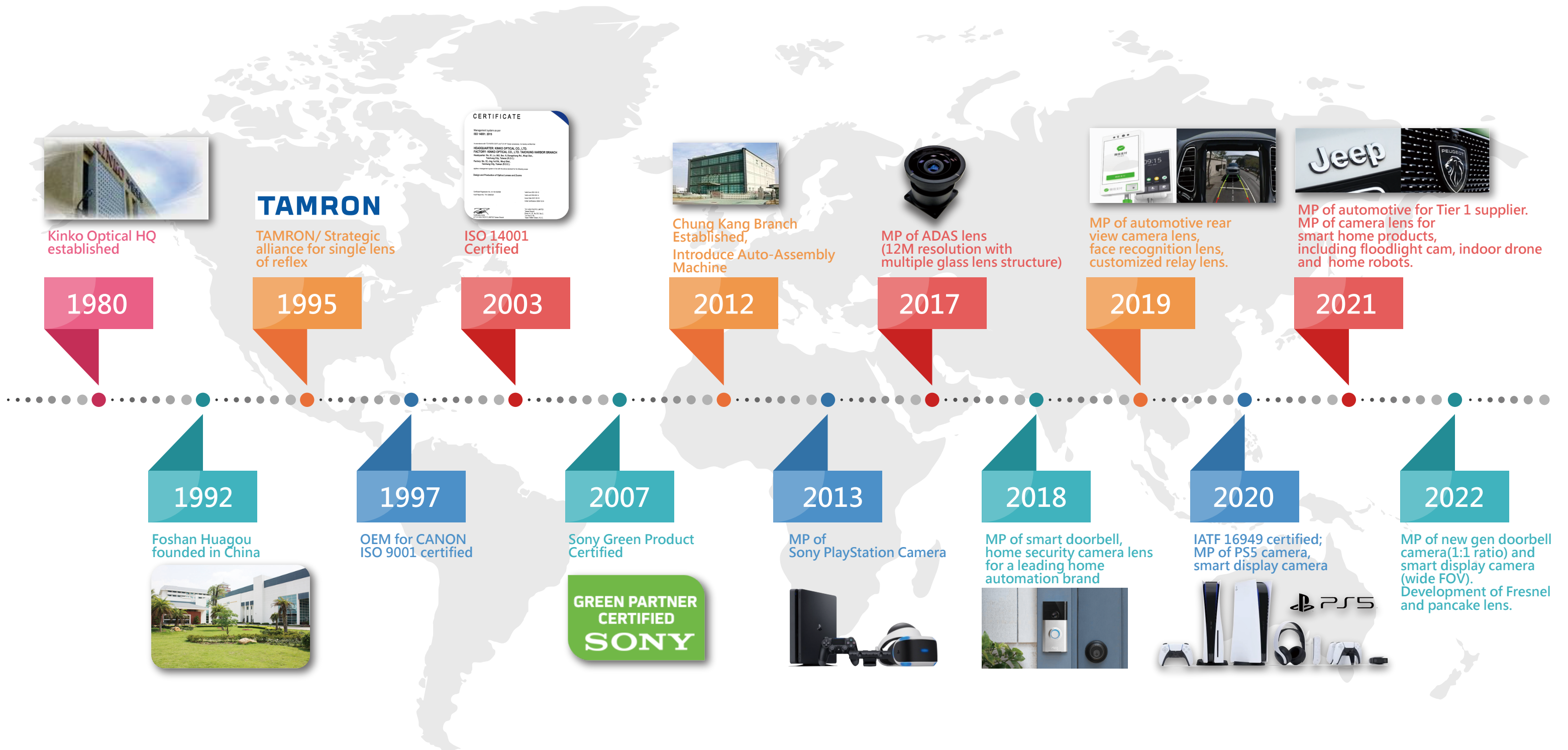
Plants:

- Kinko Optical (Taichung, Taiwan) : Polished glass, Molding Glass, Plastic Lens, Lens Units
- Foshan Huaguo (Guangdong, China) : Polished glass, Far infrared lens units



KINKO

Company Milestone



KINKO

Main Segments



Features	IOT	Surveillance	Automotive	Drone/LWIR	Gaming / VR
Hi-Res(Above 2K)	O	O	O	O	
Short TTL	O	O	O	O	O
IP65/67	O	O	IP69K	O	
Anti UV	O	O	O	O	O
Anti Flare	O	O	O	O	O
Day & Night Confocal	O	O	O	O	O

KINKO QUALITY POLICY



KINKO

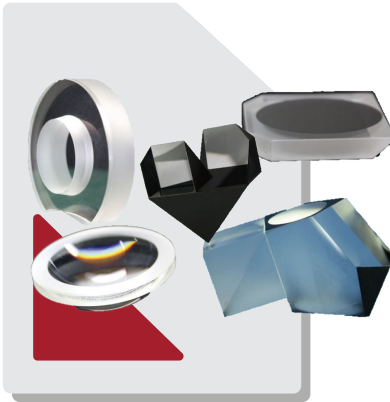
Other Products



Far Infrared



Large Zoom Lens



Lens, Prism



Intelligent Transportation System (ITS)



Interferometer



Line Scan Lens



Eyepiece Module



Factory Automation

Manufacturing Capacity

Polished Glass (Spherical)

- Over 40 years experience
- Capacity
 - Kinko (Taiwan) : **2.8M/m**
- Diameter $\phi 2 \sim 210\text{mm}$

Lens Units (A-spherical, spherical)

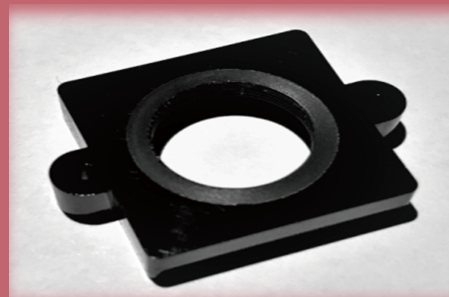
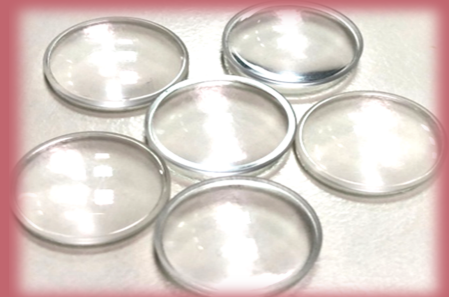
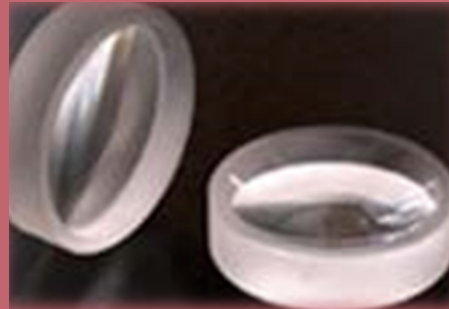
- Over 30 years experience
- Capacity : **18M lens units/m**
(Hybrid/ all plastic/ all glass)
- Clean room class
 - Class 1000 for assembly line
 - Class 100 for machine chamber

Molding Glass (A-spherical)

- Over 20 years experience
- Capacity
 - **1M single lens/m**
- Diameter $\phi 2 \sim 40\text{mm}$

Precision Technology

- In- house tool manufacture
- In-house black parts molding
- Precision measurement



Production line

- ▶ 100% Auto-assembly
- ▶ 100% Lens & Lens holder auto-screwing
- ▶ 100% MTF auto-sorting
- ▶ 100% AOI for lens & Lens Unit



Auto Assembly
Machine



Auto-Screwing



AOI for lens & lens unit

Kinko provides superior quality lenses by using the best optical inspection testers in the world.



Trioptics Pro9



Trioptics IMHR



Trioptics Pro10