

Experience the Best-in-class,
State-of-the-art Machine Suite and Expertise
Delivering High-Performance Components
and Assemblies - All under one-roof !



Navigating through an intensely demanding global marketplace, Balaji Precision Components remains ardently customer-centric. Rooted in a philosophy that thrives on world-class benchmarking, we persistently challenge the norms, ensuring we're in sync with global customers. This unwavering approach has not only been our cornerstone but also our catalyst, propelling us to significant growth.

In an era where precision is paramount, we invite you to experience the distinction of accuracy and quality at Balaji Precision Components. We integrate knowledge, experience and technology in ways, a very few in our industry can.



**Delivering solutions
to customers who demand most
precise, high-performance, made-to-print
- Components & Assemblies**



At Balaji Precision Components, we stand as an epitome of precision and innovation in manufacturing parts, components and assemblies for the international markets. As pioneers in delivering high-performance parts and customer-driven engineering services, our portfolio encompasses a comprehensive range of transmission, driveline, engine components and more.

BPC invests heavily in state-of-the-art manufacturing equipments and quality systems to stay at the forefront of demanding global customer requirements.

Our global clientele recognises us for our steadfast commitment to fulfilling intricate and high-precision requirements. We pride ourselves on meeting the most rigorous standards of precision, consistently living up to the global expectations.



AS9100, IATF 16949, ISO 14001
D&B D-U-N-S: 92-062-3738, D&B Rating: 5A2

MARKET SEGMENTS. WE SERVE.

Balaji Precision Components has consistently been fulfilling the diverse high-precision component demands of clients from across the globe, matching and producing with the utmost exacting standards. Today we are recognised as an industry leader in the design, manufacture, and delivery of engineered, high-performance - components and assemblies tailored for the global market.

As the world marketplace becomes increasingly demanding, BPC continues to remain a highly customer-focused organization. With the philosophy of being obsessed with world-class benchmarking, continuously challenging ourselves and aligning with global customers, we have consistently grown at a tremendous pace.

Original Equipment Manufacturers (OEMs)

Tier 1 & Tier 2 Suppliers

Aftermarket/ Spare Parts Leaders



**Committed to delivering
cutting-edge global products
and solutions**

3

**MANUFACTURING
PLANTS**

23+

**YEARS OR
EXPERTISE AND
EXPERIENCE**

328000+

**SQUARE FEET OF WORLD-CLASS
PRODUCTION FACILITY**

CONSISTENTLY GROWING LEGACY

2002 - Balaji Precision Components starts with a modest 9500 square foot plant.

We take pride in having bagged our first export order in our first year of existence

2004 - Bagged first large order with our persistent hard work.

This became the next stepping stone to expanding and adding more machines and manpower to the plant expansion.

2005 - First Business Expansion.

With our constant growth, we expanded from a 10 to 60+ people company.

2008 - Addition of second state-of-the-art manufacturing plant

To fulfil the growing needs of our ever demanding customers we grew our team to 110 People.

2014 - Large order received for timed ground gears

This was a proud moment for us as the

order was from one of the most reputed Diesel Engine manufacturer in Europe, now BPC became 250+ people strong.

2018 - BPC received the first prototype order for component production for First Electric Vehicles (EV's)

With this order both our technology and machinery lines expanded ; and our team expanded to 400+ People.

2021 - Establishment of our new 5 acres (220,000 sq.ft.) plant with the most modern manufacturing technology in the metal cutting field.

Continuous support and demand from our worldwide customers led to this expansion resulting in new production lines and people expansion to 600+.

2022 - Further facility expansion of another 2.5 acres (108,000 square foot) Fueling huge growth helping us achieve a sudden upsurge in global demand post covid. We are now 850+ people strong.



850+

**TEAM SIZE AND
GROWING**

**MODERN
PRODUCTION
FACILITY**

**INDUSTRY 4.0
STANDARDS**



GLOBAL MARKETS. OUR REACH.

OUR VISION

Consistently strive to achieve product leadership through constant innovation and continuous product & process improvement.

OUR MISSION

All our actions are oriented to enhance value for our customers, vendors, employees, society and the environment at large around us.

**A Benchmark in
Quality and Timely Deliveries
in Today's Dynamic Landscape**

50+
CUSTOMERS
SERVED WORLDWIDE





16+ INDUSTRIES. WE SERVE.

We specialise in designing, manufacturing & sourcing high-performance, precision components and assemblies across indurty segments.



LOCOMOTIVES



RENEWABLE ENERGY



MATERIAL HANDLING



OIL & GAS



OFF-HIGHWAY &
HEAVY DUTY TRUCKS



AUTOMOTIVE
ELECTRIC VEHICLE



AUTOMATION
& ROBOTICS



AEROSPACE



AGRICULTURAL
VEHICLES &
EQUIPMENTS

ENGINES &
TRANSMISSIONS



CONSTRUCTION
MACHINE



PERFORMANCE
& RACING CARS

DIFFERENTIAL &
DRIVELINES



REASONS
WHY



A BRAND
YOU CAN TRUST

With over 23 years of experience in building quality into every product we manufacture, we know when and how to make process improvements, utilising our highly skilled teams that are 100% committed to meeting or exceeding your quality expectations.

01

23+ Years of Experience
And Expertise

02

Consistent On-time
Deliveries

03

Reverse Engineering
Specialists

04

High Performance
Product Range Offering

05

Latest Hi-tech
Manufacturing Facilities

06

State-of-the-art-
Inspection Facilities

07

In-house Rapid
Prototyping Facilities

08

Uncompromised Quality,
Versatility and Excellence

09

Well Structured
Organisation



01

TWO DECADES OF EXPERIENCE & EXPERTISE

Harnessing the combined prowess of experience and expertise for the last two decades, team members across fields function with precision, efficiency, and agility in their daily operations. Equipped with state-of-the-art technologies - built to foster an environment of innovation, paving the way for solutions that are robust and tailor-made to suit our clientele's unique requirements. This sets us apart in the peerless quality of our components and our vision to set higher benchmarks for ourselves continually. This unyielding pursuit of perfection is mirrored in our rigorous quality control processes that ensure every product that leaves our facility is a testament to superior craftsmanship and durability.



02

DELIVERIES ON-TIME. EVERY-TIME.

In today's fast-paced, ever-evolving global market, where delays can lead to significant business repercussions, Balaji Precision Components stands as a paragon of reliability and a beacon of excellence, setting the gold standards in delivery and quality. Our track record of timely deliveries is not just a statistic, it is our unwavering commitment and the lifeline that guides every decision we make and every project we undertake. It is a reflection of our dedication to our clients and our commitment to excellence. When customers collaborate with us, they're not just getting a supplier, they're partnering with an entity that understands the importance of time, quality, and trust.

9 REASONS - WHY ? **BPC**

03

VALUE ENGINEERING A CORE COMPETING STRENGTH

Balaji Precision Components isn't just about providing components, it's about crafting a broad spectrum of technology-enabled highly engineered products. The offerings include transmission & engine components, driveline components and engineering design services at the forefront of our cutting-edge technology.

In the ever-evolving landscape of engineering, Balaji Precision Components stands as a beacon of innovation, integrity, and impeccable craftsmanship. We are not just manufacturers, we are pioneers, continuously pushing the boundaries of what's possible in the realm of precision engineering.

Rapid Prototyping

Product Modelling

Reverse Engineering

Product Optimization and Enhancements



04

**OUR RANGE OF HIGH-PERFORMANCE
COMPONENTS AND ASSEMBLIES**

01 SHAFTS & PINIONS



02 GEARS



03 FORGINGS



04 CASTINGS



05 SHEET METAL PARTS



06 BAR STOCK / BILLET MACHINED ALUMINIUM PARTS



07 AUTOMATIC TRANSMISSION PARTS



08 ASSEMBLIES & SUB-ASSEMBLIES





24000+

**TONS OF STEEL PARTS
PROCESSED ANNUALLY**

2.5Mn+

**PARTS PRODUCED
ANNUALLY**

05

**WE PROUDLY
WELCOME YOU
TO OUR NEW
GLOBAL MACHINING
FACILITY**





- CNC Turning Centers
- CNC Vertical & Horizontal Machining Centers
 - 5-AXIS Multi-Tasking Machines
 - 5-Axis Machining Centers
- Vertical and Horizontal Broaching Machines
 - Deep Hole/ Gun-Drilling upto 1200 mm
- CNC Gear Hobbing Machines with Full Automation
 - CNC Gear Shaping Machines
 - CNC Gear Shaving Machines
- CNC Generation Gear Grinding Machines
- CNC Cylindrical Straight & Angular Grinding Machines
 - CNC Internal Bore Grinding Machines
 - CNC Centerless Grinding Machines
- Spline Rolling / Forming Machines - Rotoflow
- Gear Honing, V-Chamfering, Teeth Rounding
- State of the art Heat Treatment (QT, Induction Hardening)
- Case Carburise, Carbo-Nitriding, Gas & Plasma Nitriding
 - Shot Blast and Shot Peen
 - Shaft Straightening Presses
- Surface Treatments (Black Oxide, Mn Phosphating, Zn Plating)
 - Surface Coatings (Powder Coating, Painting)

STATE-OF-THE-ART MACHINE SUITE

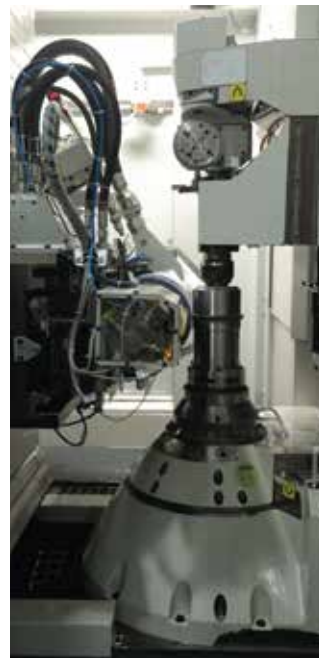


9 REASONS - WHY ? **BPC**



250+
IN-HOUSE
PRODUCTION
MACHINERY

STATE-OF-THE-ART MACHINE SUITE



9 REASONS - WHY ? **BPC**



850+
HIGHLY TALENTED
WORKFORCE



06

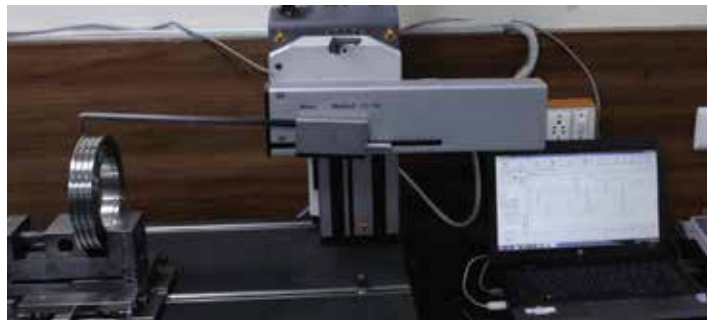
**UNCOMPROMISED
QUALITY**

➤BPC

3

**IN-HOUSE
TESTING AND
INSPECTION LABS**

9 REASONS - WHY ? **BPC**



HIGH-END GLOBAL INSPECTION FACILITIES & INFRASTRUCTURE



- Co-Ordinate Measuring Machines (CMM) - Carl Zeiss, Germany
- Linear Height Measurement - Mitutoyo, Japan
- Surface Roughness Tester - Mahr, Germany
- Profile Shadow Projector with Data Processor
- Contour & Form Tester - Mahr, Germany
- Roundness & Cylindricity Tester - Mahr, Germany
- P40 and P26 Gear Tester - Klingelnberg, Germany
- CNC Master Gear Roll Tester
- NDT XRF Analyser - Olympus & Niton
- Hardness Testers - Rockwell, Brinell, Superficial, Micro-Vickers
- Metallurgical Microscope GX51 with Leco Image Analyser - Olympus, Japan
- 36 Element Spectrometer - Spectro, Germany
- Non Contact Shaft Measuring ShaftScope 750 - Mahr, Germany



5+
**QUALITY MANAGEMENT
SYSTEM - CERTIFICATIONS**

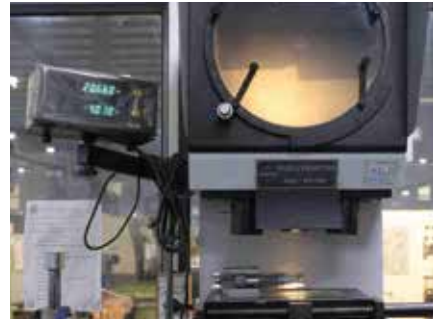


IATF 16949:2016

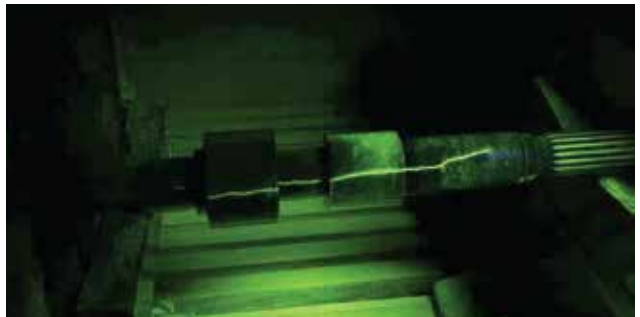


www.tuv.com
ID 9105066654

9 REASONS - WHY ? **BPC**



30+
TESTING
INSPECTION AND
MACHINES





07

INHOUSE TEAM & RAPID PROTOTYPING FACILITIES

With an array of CAD, CAM and CNC equipment at our disposal, we are able to offer rapid prototyping to our customers.

Our cutting-edge engineering from design to prototyping - offerings are the culmination of rigorous research, meticulous design, and unerring precision.



08

DELIVERING UNCOMPROMISED QUALITY, VERSATILITY AND EXCELLENCE

Delivering uncompromised quality with a commitment to versatility and excellence. Our dedicated team of experts, armed with profound industry knowledge and a passion for precision, works diligently to ensure that every component is made to perfection. We understand the intricate nuances that go into creating world-class components and our rigorous quality control processes are a testament to that understanding. Our state-of-the-art infrastructure plays a pivotal role in upholding our reputation for impeccable standards. Equipped with the latest machinery and technology, our facilities are fine-tuned for efficiency and precision. This robust infrastructure, combined with our team's expertise, ensures that we consistently deliver on our promises - every single time.

9 REASONS - WHY ? BPC



In our esteemed organization, leadership is exemplified by a cadre of professionals at the helm. Our CEO sets the strategic vision, supported robustly by the General Managers overseeing daily operations alongwith dedicated Product Managers.

Supply Chain and Logistics Managers seamlessly coordinate to optimize our value chain. This symphony of expertise is driven by a highly committed and dedicated team, making our organization structured and a beacon of excellence in the industry.



Leveraging streamlined process flows, a cohesive team structure, and an advanced process infrastructure, we pledge an unparalleled attention to detail in every production cycle. From the initial design phase to the final shipment, every step is meticulously planned and executed, guaranteeing that the products not only meet but exceed the expectations of our esteemed clientele. Each component is rigorously tested and verified, ensuring that every shipment not only meets but often surpasses the exacting standards. Further more, our operational efficiency and robust supply chain management guarantee timely deliveries, solidifying our reputation as a reliable partner.



EXPERIENCE **BPC** ADVANTAGE



LATEST TECHNOLOGY MACHINES

We have the best and latest technology lineup of machines in the industry. Our fleet of equipment is the youngest and comprises the best brands from around the globe.



FASTER PROTOTYPES

Time is of the essence...!! And we understand that quite well. We provide lightning-fast prototype lead times which gives our customer's the benefit of launching new projects faster.



VALUE ENGINEERING

We understand that our customer's always have a choice so its very important to stay lean and mean which gives us an edge to offer most economical solutions to our customers.



HIGHLY COST COMPETITIVE

At Balaji, we believe in delivering more value to our customer by adding more value to the product. With the latest CAD and CAM technologies, we work with our customers to understand as to how we can make the product better.



Balaji Precision Components Pvt. Ltd.

PLANT 1

Plot No: 2030 - 2044, Sec-38 Phase 2,
Rai Industrial Area, Sonapat - 131029,
Haryana INDIA

PLANT 2

Plot No: 474, Export Promotion Ind. Park
Kundli Industrial Area, HSIIDC
Haryana - 131028 INDIA

PLANT 3

Plot No: 388, Export Promotion Ind. Park
Kundli Industrial Area, HSIIDC
Haryana - 131028 INDIA

Email

ankur@balajiforge.net

Call Support

+91-9811258286

