

JULUEN ENTERPRISE

COMPANY PROFILE



+886-2-86873177



No. 88, Section 1, Zhonghua Road, Tucheng District, New Taipei City 236029, Taiwan



www.juluen.com.tw

Brilliantly together



AGENDA



**COMPANY
MILESTONES**



**INTERNATIONAL
COMPETITIVENESS**



**OPERATION &
MANAGEMENT**



**SUSTAINABLE
OPERATIONS**



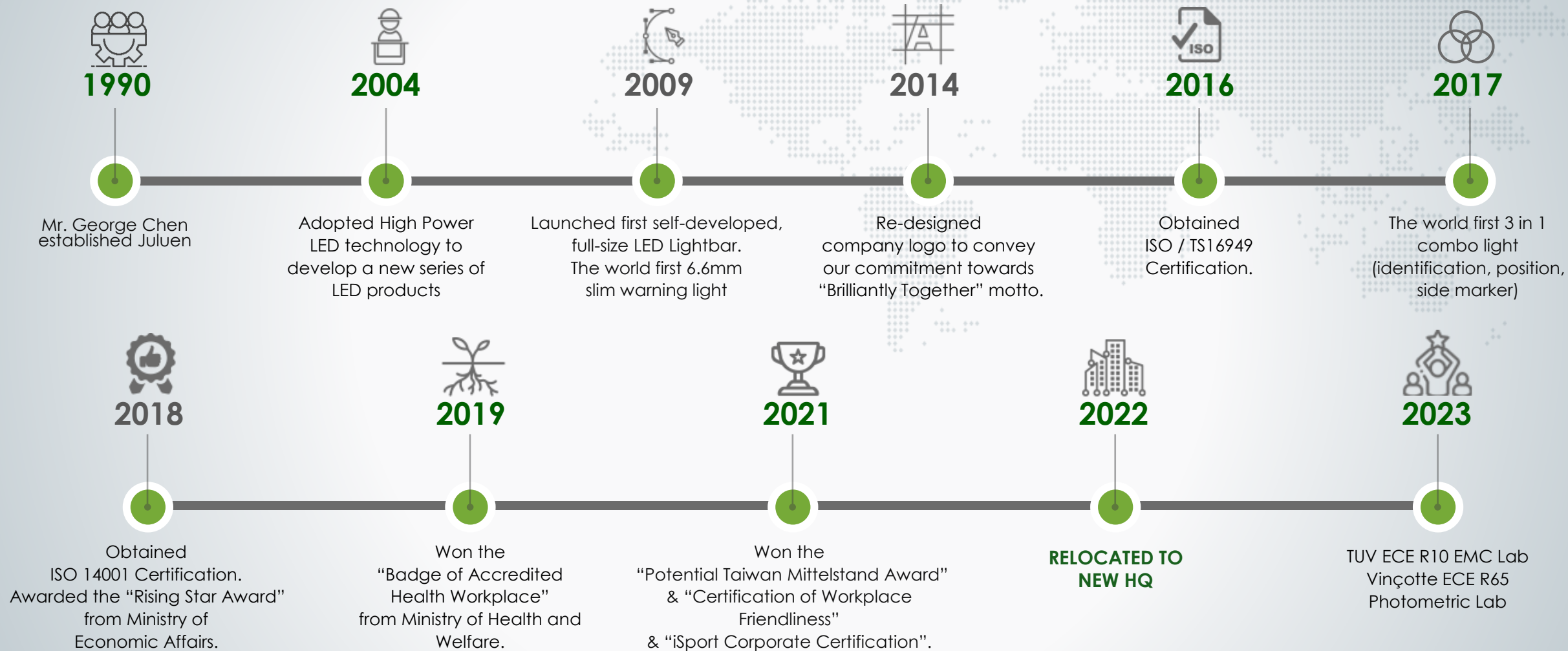
Q&A

01

PART ONE

COMPANY MILESTONES

COMPANY HISTORY TIMELINE



02

PART TWO

INTERNATIONAL COMPETITIVENESS

INDUSTRY

**INFORMATION
LIMITATION**



**SALES
CHANNEL LIMITATION**



**LONGER
PRODUCT LIFESPAN**



QUALITY & DURABILITY



BRAND TRUST



GLOBAL PRODUCTS

44%



LIGHTHEAD

16%



LIGHTBAR

11%



BEACON

9%



MINIBAR

7%



COVERT LIGHT

6%



TRAFFIC STICK

3%



WORK LAMP

2%



DASH / VISOR SYSTEMS

1%



SIREN SYSTEM

1%



ACCESSORY & OTHERS

Ambition In Developing The Acoustic Systems



**Emergency
Sirens / Speakers**

**Police Motorbike
Sirens**



03

PART THREE

OPERATION & MANAGEMENT

VISION



To establish a competitive and happy company that focuses on vehicle warning solutions and aims to become the premier partner choice in the industry.

MISSION



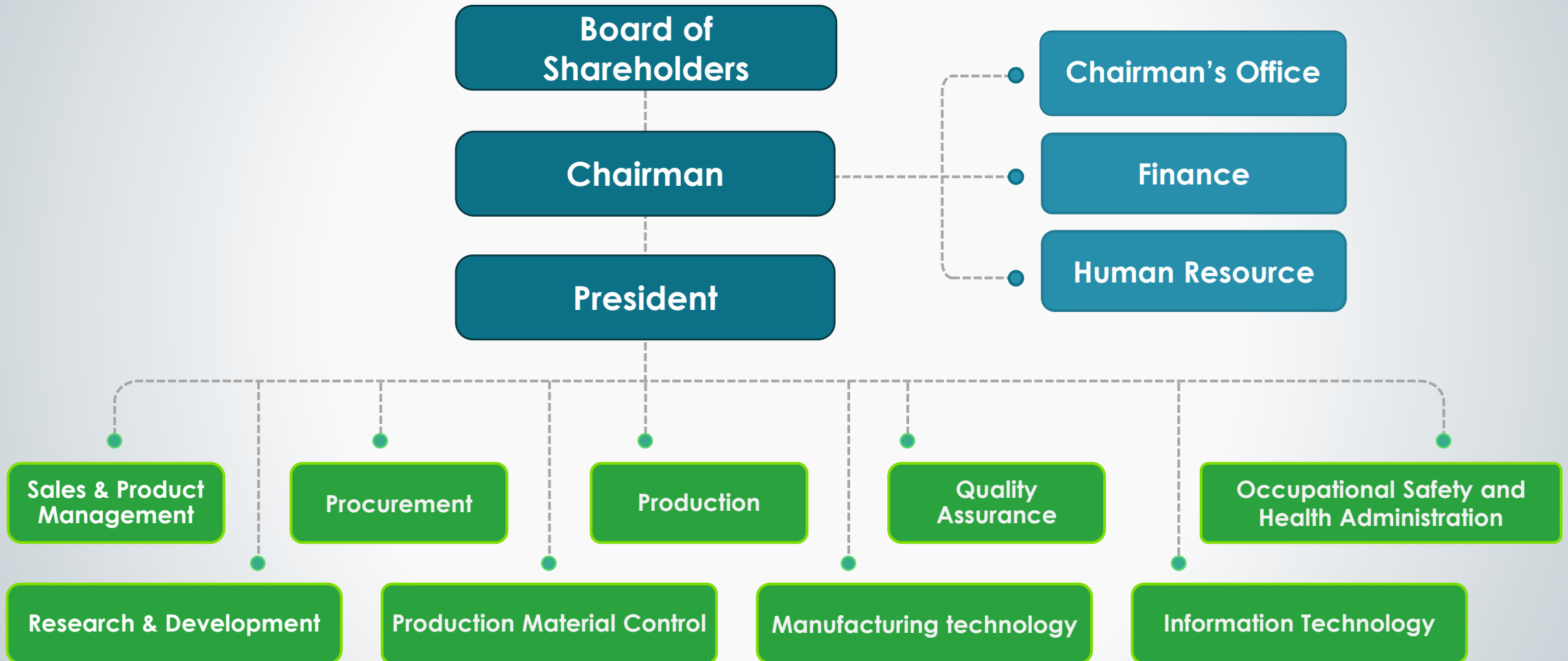
To maintain customers' best interests and build a safer environment for protecting human life and property.

CORE VALUES



Brilliantly together

ORGANIZATION CHART



HONOR & AWARDS



CHARITABLE ACTIVITIES



EMPLOYEE RELATIONS



3 DAYS FUNDRAISING CAMPAIGN



3 DAYS FUNDRAISING CAMPAIGN



The screenshot shows the World Vision website with a fundraising campaign for the Turkey and Syria Earthquake Response. The page features the World Vision logo, navigation links (Donate, Sponsor a Child, Gift Catalog, About Us, Our Work, Ways to Help, New), and a breadcrumb trail (Home > Shop > Disaster Relief > Turkey and Syria Earthquake Response). A large image on the left shows people helping a child climb over a damaged wall. The main heading is 'Turkey and Syria Earthquake Response'. Below it are donation buttons for \$150, \$200, \$250, and \$500, followed by a custom amount input field. An orange 'GIVE NOW' button is prominently displayed. A paragraph of text describes the earthquake event on February 6th, mentioning a 7.8 magnitude quake and the death toll exceeding 100 years.

World Vision® [Donate](#) [Sponsor a Child](#) [Gift Catalog](#) [About Us](#) [Our Work](#) [Ways to Help](#) [New](#)

[Home](#) > [Shop](#) > [Disaster Relief](#) > Turkey and Syria Earthquake Response

Turkey and Syria Earthquake Response

[\\$150](#) [\\$200](#) [\\$250](#) [\\$500](#) or \$

[GIVE NOW](#)

On February 6th, a 7.8 earthquake and multiple aftershocks hit Southern Turkey (officially, the Republic of Türkiye) and Northern Syria - one of the strongest in the region in over 100 years. Sadly, the death toll has exceeded the tens of thousands.

Total : USD25,000

- Schedule: **Feb 16th -18th**
- Staff Fundraising Target : **USD 6,600**
- Company Fundraising Target : **USD 16,000**

04

PART FOUR

SUSTAINABLE OPERATIONS

LAB CERTIFICATION



ISO 9001:2015



ISO 14001:2015



IATF 16949:2016



TUV ECE R10
EMC Lab

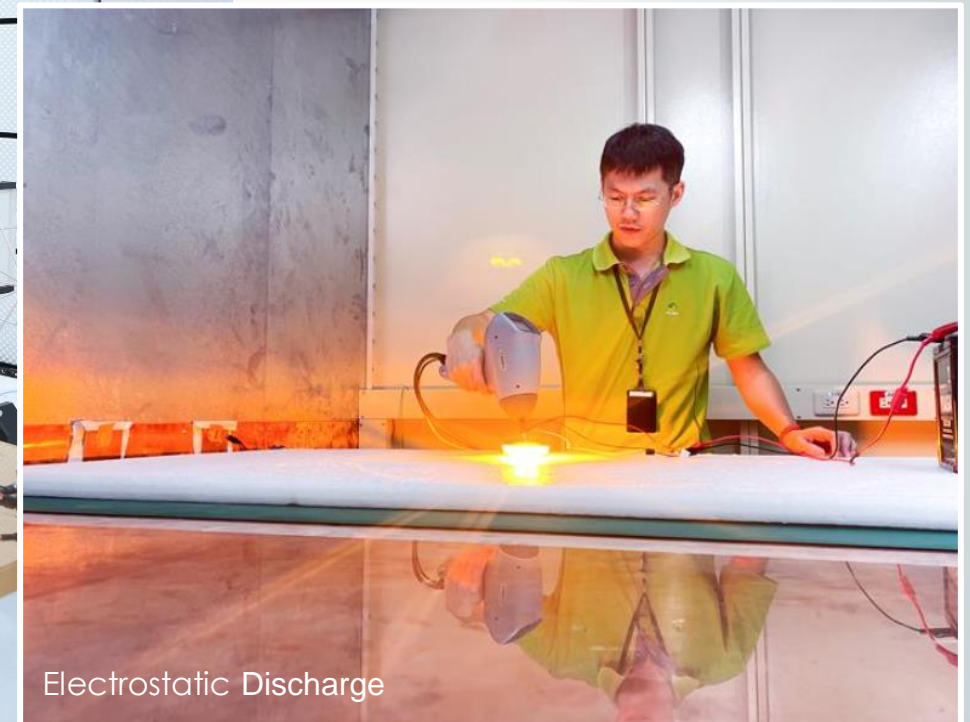


Vincotte ECE R65
Photometric Lab

ELECTROMAGNETIC COMPATIBILITY (EMC)



Radiated and Conducted Tests



Electrostatic Discharge

ENGINEERING CAPABILITIES



6F Test Lab



Acoustic



Mechanical

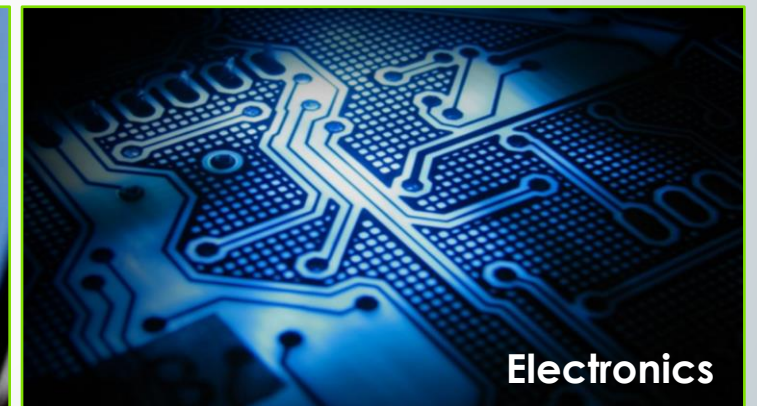


Optical

IN-HOUSE



Software



Electronics

WORLDWIDE POLICE VEHICLES



Ireland Police



Mexico Police



Sao Paulo Police



Japan Police



UK Police



Columbia Police



Estonia Police



Slovenia Police

Brilliantly together



Pursue excellent technology and perfect quality.
Enhance customer satisfaction and brand value.

**THANKS FOR
LISTENING**

202402

共創璀璨 同享榮耀
Brilliantly together