

# GAT MACHINERY



## WORKSHOP EQUIPMENT SOLUTION

### High Quality

We strive to lead automotive service equipments & tools - always make sure that we focus on

### Professional Service

Listening to our customers is the key to deliver truly innovative products and solutions that make us excellent

### Innovation

Innovation drives our success. We are dedicated more than others to Equipment game-changing products

**GAT MACHINERY CO.,LTD.**

+86-755-23008803

ADD:3RD FLOOR, BUILDING B2, FUXINLIN INDUSTRIAL PARK, GAOYE RD., BAO'AN DISTRICT, SHENZHEN, CHINA

INFO@GAT-MATIC.COM

WWW.GAT-MATIC.COM



www.gat-matic.com



facebook

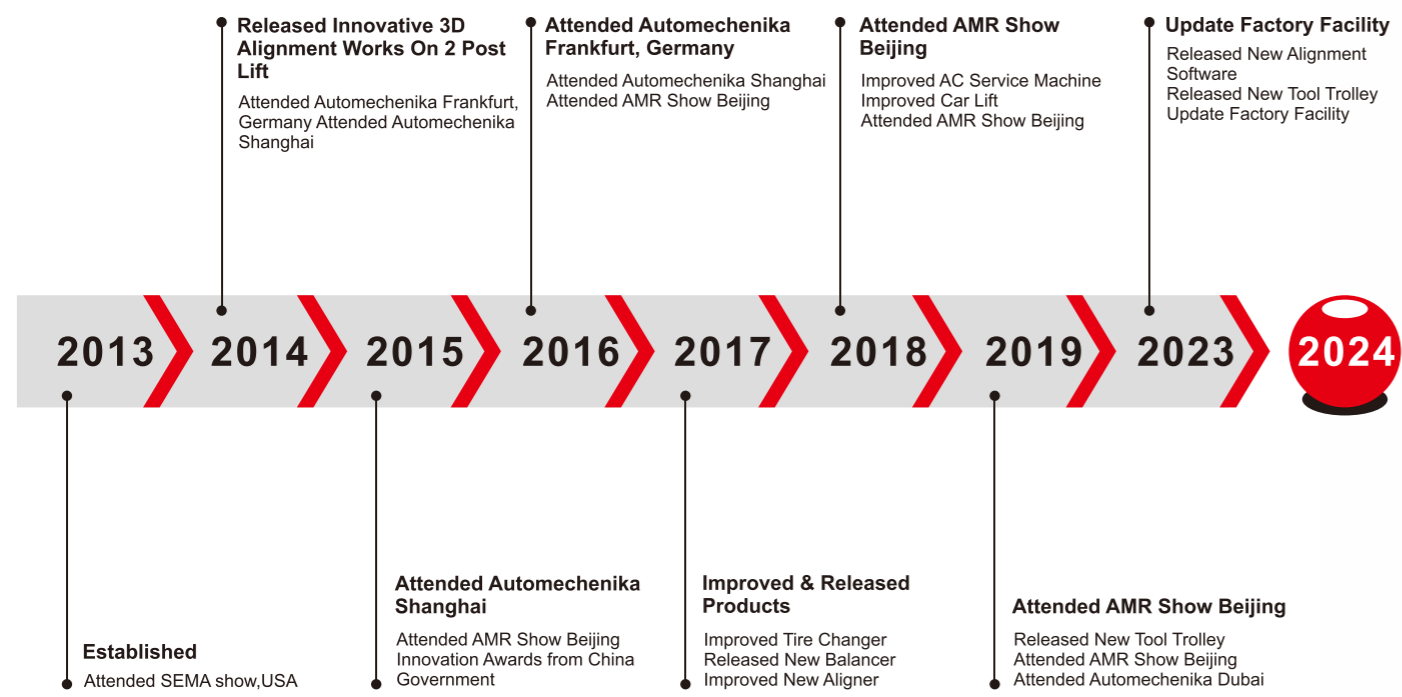
**GAT MACHINERY CO.,LTD.**



# Certification & Patents



# Company History



is

# Company Profile

GAT MACHINERY CO.,LTD is a professional manufacturer and supplier of 3D wheel aligner, car lift, tire changer, wheel balancer, tool trolley, tool cabinet, auto hand tools, A/C recovery machine, injector cleaner and other professional garage equipment, with innovated R&D team, strong production capacity and professional support team in China.

Our factory covers more than 9,000 square meters, including R&D center, production lines and modern warehouse. We have strong production ability, updated manufacturing facilities with the latest digital control cutting machines, CNC punch, bending machines, automatic welding machines and other professional manufacturing equipment. Our automatic production line meets China environmental testing standards and all products are made with strict international quality control standards.

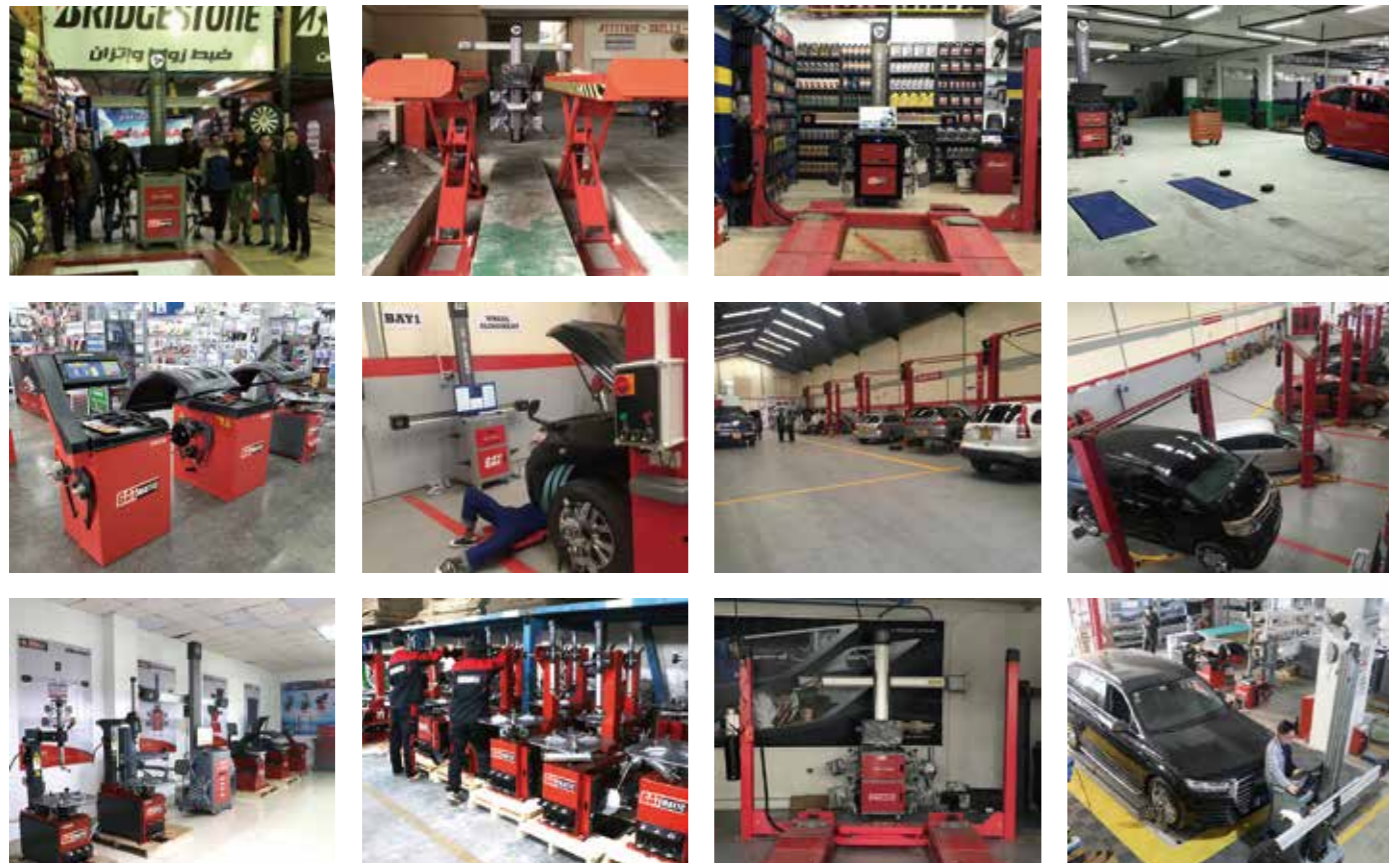
We have strong technical support team and competitive price superiority to attract professional customers & distributors from all over the world. We export to over 50 countries, including European market, North American market, Latin American market and South East Asian market. Our products are popular in Canada, USA, Spain, Poland, Mexico, Brazil, Chile, Peru, as well as Australia, Malaysia, Thailand, Myanmar, India, Saudi Arabia, Egypt, Nigeria and South Africa.

We have enjoyed high reputation among our customers for innovation technology, high quality products, professional technical support and fast service. We are looking forward to establishing long-term, honest and win-win cooperation with you!





# Exhibition



▶ 01 Wheel Aligner .....	01
▶ 02 AC Service Machine .....	13
▶ 03 ATF Exchanger .....	17
▶ 04 Injector cleaner .....	20
▶ 05 Tire Changer .....	24
▶ 06 Wheel Balancer .....	32
▶ 07 Car Lift .....	38

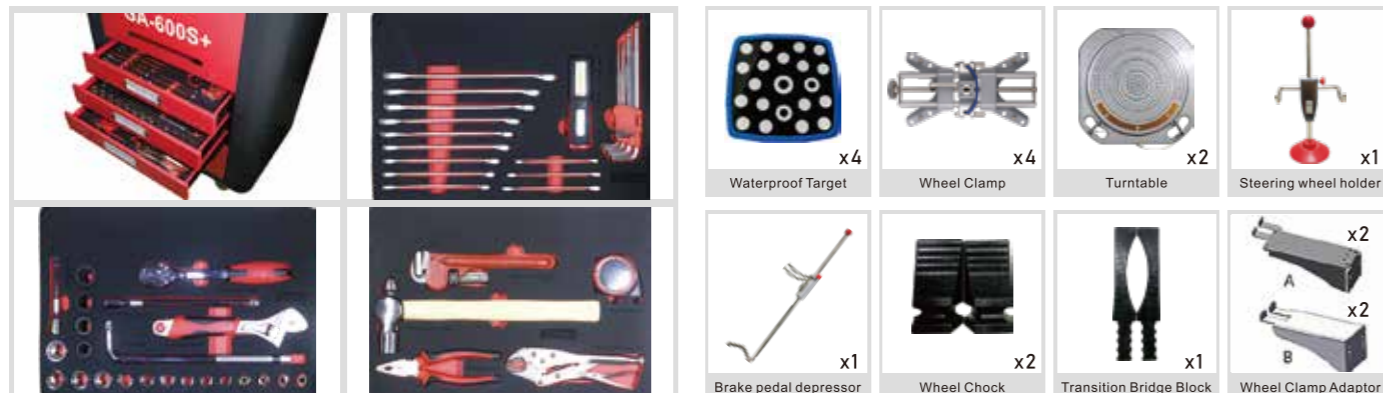




# New Technology 3D Wheel Aligner

Works on 2 Post Lift

GA-600S+

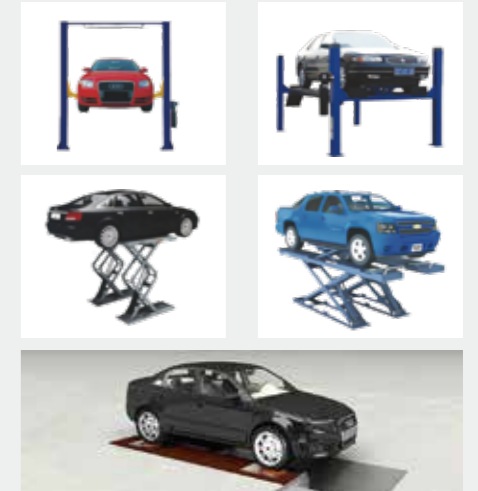


## Description

GA-600S+ is innovative technology of 3D wheel aligner. It can perform wheel aligner on 2 post lift and small scissor lift, which is unique in the industry with patents. With the post fixed on cabinet, it can be movable during the test. The convenience and easy operation can help small garage to save space.

## Specification

Item	Precision	Range
Toe-in	±2'	±20°
Camber	±2'	±20°
Caster	±4'	±20°
SAI/KPI	±6'	±20°
Setback	±2'	±5°
Thrust Angle	±2'	±5°
Tread Difference	±2mm	
Wheelbase Difference	±2mm	



Fits all kinds of lifts

## Features

- Fits all kinds of lifts: Two post lift, Scissor lift and Four post lift
- Language: English, Spanish, Russian, German, Arabic, Thai
- Dynamic constitute coordinate, not affected by the inclination of lift
- No need to wait during rolling or caster swing, save test time
- Automatically calculate wheel diameter, no need to input manually
- High precision anti-throwing target, reinforced plastic enclosure
- A wide range of wheel clamp, with 10"-24" solid & precision clamp
- With unique quick testing mode, saving time and working efficiently



## Reliable

- New small target design
- Push rolling-out compensation
- Non-stop at push rolling-out compensation
- 10/20 degree non-stop at caster swing
- Patent target, minimal the sunlight abuse
- Vehicle position adaption automatically
- Simplicity and painless at installation
- Easy installation, not require on-site calibration
- Camera beam automatically follows lift movement, assure 100% full height range measurement



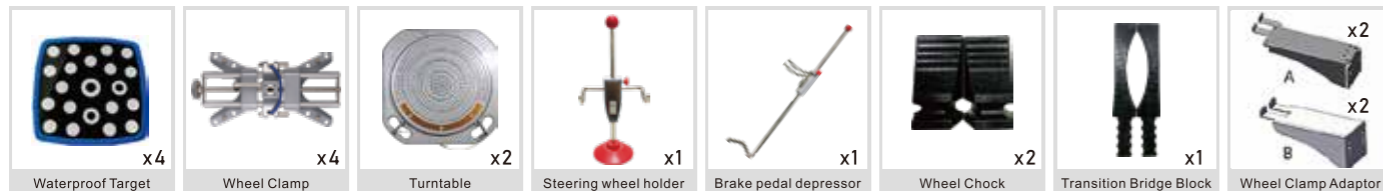




# New Technology 3D Wheel Aligner

Works on 2 Post Lift

**GA-600S**

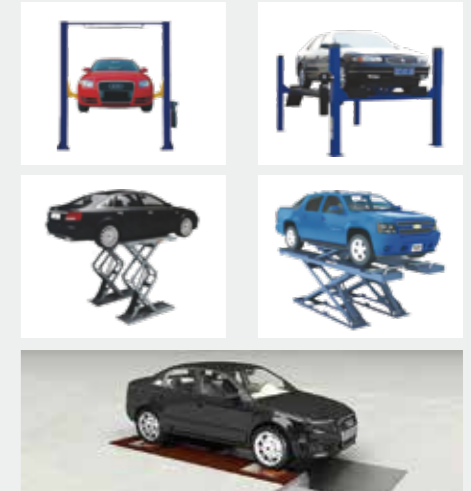


## Description

**GA-600S** is innovative technology of 3D wheel aligner. It can perform wheel aligner on 2 post lift and small scissor lift, which is unique in the industry with patents. With the post fixed on cabinet, it can be movable during the test. The convenience and easy operation can help small garage to save space.

## Specification

Item	Precision	Range
Toe-in	±2'	±20°
Camber	±2'	±20°
Caster	±4'	±20°
SAI/KPI	±6'	±20°
Setback	±2'	±5°
Thrust Angle	±2'	±5°
Tread Difference	±2mm	
Wheelbase Difference	±2mm	



Fits all kinds of lifts

## Features

- Fits all kinds of lifts: Two post lift, Scissor lift and Four post lift
- Language: English, Spanish, Russian, German, Arabic, Thai
- Dynamic constitute coordinate, not affected by the inclination of lift
- No need to wait during rolling or caster swing, save test time
- Automatically calculate wheel diameter, no need to input manually
- High precision anti-throwing target, reinforced plastic enclosure
- A wide range of wheel clamp, with 10"-24" solid & precision clamp
- With unique quick testing mode, saving time and working efficiently



## Reliable

- New small target design
- Push rolling-out compensation
- Non-stop at push rolling-out compensation
- 10/20 degree non-stop at caster swing
- Patent target, minimal the sunlight abuse
- Vehicle position adaption automatically
- Simplicity and painless at installation
- Easy installation, not require on-site calibration
- Camera beam automatically follows lift movement, assure 100% full height range measurement

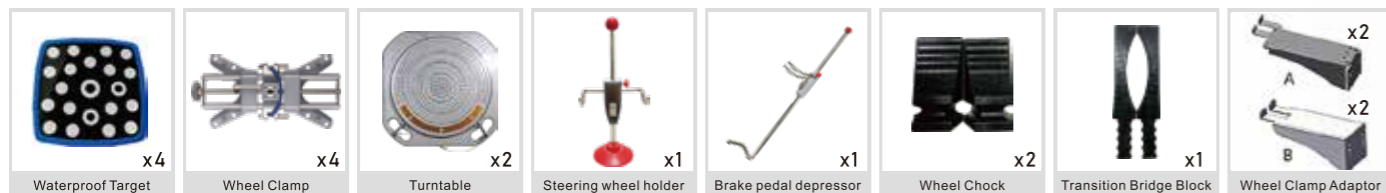






# New Technology 3D Wheel Aligner

**GA-300M**



## Description

**GA-300M** is the latest 3D technology wheel aligner with automatic tracking target. It's with dynamic constitute coordinate, not affected by the inclination. It can perform wheel alignment at all height.

## Specification

Item	Precision	Range
Toe-in	±2'	±20°
Camber	±2'	±20°
Caster	±4'	±20°
SAI/KPI	±6'	±20°
Setback	±2'	±5°
Thrust Angle	±2'	±5°
Tread Difference	±2mm	
Wheelbase Difference	±2mm	

## Professional

- Superiority on technology, have more than 7 specialists with ten years experience
- Independent intellectual property rights, hold invention and utility patents
- Dynamic constitute coordinate, not affected by the inclination of lift
- No need to wait during rolling or caster swing, save test time
- Automatically calculate wheel diameter, no need to input manually
- High precision anti-throwing target, reinforced plastic enclosure
- Real-time data reading makes adjustment easier

## Reliable

- Specializing 3D wheel alignment R&D, more reliable, more cost-effective
- Perfect additional measurement
- Real-time check target picture
- With unique quick testing mode, saving time and work efficiently
- Friendly interface, fast and stable search function
- Equipped with the best industrial camera and optical system
- A wide range of wheel clamp, with 10"-24" solid & precision clamp
- Waterproof protected

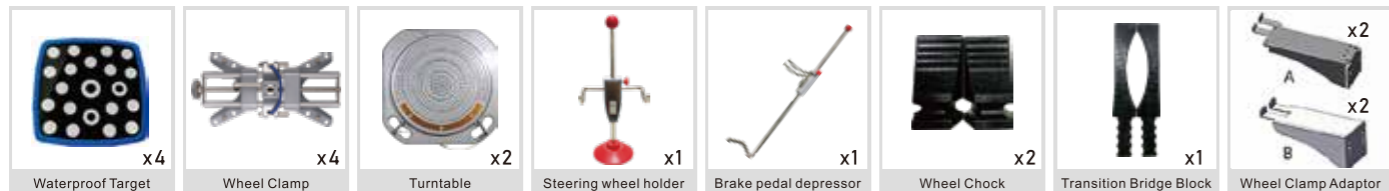






# New Technology 3D Wheel Aligner

**GA-300**



## Description

**GA-300** is the latest designed 3D wheel aligner with stable, accurate, low cost and easy-to-maintain two cameras wheel alignment system. GA-300 has unique and advanced features which help workshop engineers perform professional and very fast alignment work.

## Specification

Item	Precision	Range
Toe-in	±2'	±20°
Camber	±2'	±20°
Caster	±4'	±20°
SAI/KPI	±6'	±20°
Setback	±2'	±5°
Thrust Angle	±2'	±5°
Tread Difference	±2mm	
Wheelbase Difference	±2mm	

## Professional

- Dual cameras (High precision) & waterproof targets
- No need calibration when first time use
- Work perfectly on non-horizontal platform
- Real-time data reading makes adjustment easier
- Short distance of rolling run-out compensation
- Easy operation & maintenance, support Windows 7/ 8/ 10
- Large & complete alignment database
- With unique quick testing mode, saving time and working efficiently

## Reliable

- Long life & extremely precise high-speed camera system
- Automatic dynamic compensation measurement
- Reinforce structure of lateral beam to ensure high accuracy
- Interchangeable cameras
- Waterproof protected
- 10"-24" solid & precision clamp







# CCD Wheel Aligner

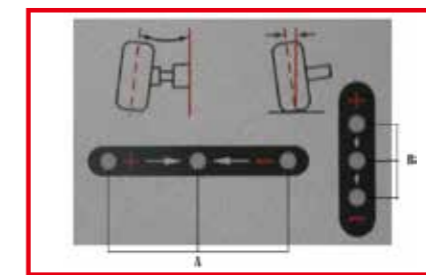
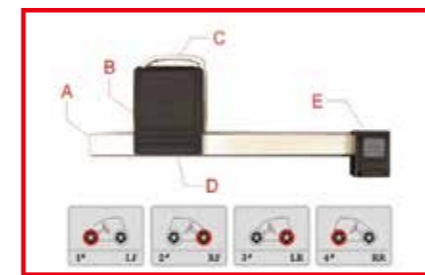
## GA-200



### Description

GA-200 is the latest designed wheel aligner with super stable, accurate and low cost features which help workshop engineers perform professional and very easy alignment work.

- 20 degree CCD camera
- Aluminium casting housing
- Unique display panel with indicator
- Interchangeable sensor heads
- Adjustable indicator explanation
- High quality battery



### Professional

- 8 high precision sensors
- 6 meter wheel base
- 20 degree CCD camera
- Detect low chassis automatically
- Large & complete alignment database

### Reliable

- Interchangeable sensor heads
- Fast & stable data transfer
- Waterproof protected
- Robust housing for sensor head
- 10"-24" solid & precision clamp

### Specification

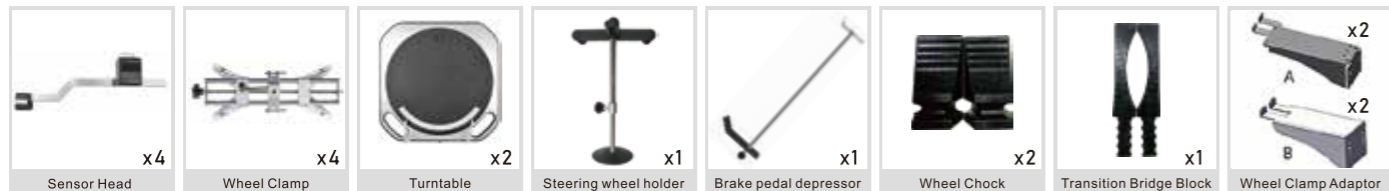
Item	Precision	Range
Toe-in	±2'	±20°
Camber	±2'	±20°
Caster	±6'	±20°
SAI/KPI	±6'	±20°
Setback	±2'	±10°
Thrust Angle	±2'	





# Innovative CCD Truck Wheel Aligner

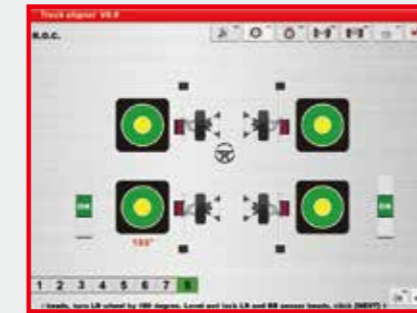
**GA-200H**



## Software Interface



Communication Diagnosis



Run-out Compensation



Caster Swing

## Features

- 8-CCD sensors measurement, accurate and stable
- Through remote control pressed key on the sensors head, may complete all wheel alignment operation
- Wireless data transfer with 2.4GHz zigbee or bluetooth radio module
- Sensors head with LCD, real-time displaying toe, camber, E-level, battery capacity, etc.
- Aligner both for truck and car is optional
- Voice prompt function for operators guidance
- High precision inclinometer with temperature compensation
- Black box self-diagnosis function for the sensor heads
- Rechargeable heads with low power consumption and dormancy mode, large capacity (5600mAh) Lithium battery
- Complete vehicle specification with more than 25,000 models, online database download
- Unique CCD aligner for trail is optional
- High accuracy wheel clamp specially for truck

## Specification

Item	Range	Precision
Bridge Parallelism	±10°	±0.02°
Total Toe	±20°	±0.04°
Camber	±10°	±0.02°
Caster	±20°	±0.04°
Dip Angle	±20°	±0.04°
Set-back	±2°	±0.04°
Thrust Angle	±2°	±0.02°
Include Angle	±30°	±0.02°
Track Width Diff.(Angle)	±2°	±0.02°
Wheelbase Diff.(Angle)	±2°	±0.02°



# A/C Service Machine

## GM-710A

Recovery / Vacuum / Recharge  
Full Automatic



### Function

- Automatic recovering/recycling
- Automatic/manual used oil drain
- Automatic vacuum
- Automatic/manual new oil injection
- Automatic recharging with load cell
- Maintenance procedures
- Database
- Printing

### Features

- With friendly interface
- With auxiliary port
- Controlled entirely by solenoid valves
- Using the special material seals
- Special designed oil separator with patented technology
- Equipped with high quality compressor
- Working stably and reliably

### Specification

- Power supply: AC220V~50/60Hz or AC110V~60Hz
- Vacuum pump: 4.5CFM, 5Pa
- Compressor: 1HP,12cc
- Load cell precision(tank): ±10g
- Load cell precision(bottle): ±5g
- Tank capacity: 12L
- Work max.pressure: 17.5bar
- LCD display: 240\*128



Modularization design



Double fans



Friendly interface  
Run by hot key



Oil injection & drain  
controlled by switch

# A/C Service Machine

## GM-720A

Flushing / Recovery / Recharge  
Full Automatic



### Function

- Automatic flushing
- Automatic recovering/recycling
- Automatic/manual used oil drain
- Automatic vacuum
- Automatic/manual new oil injection
- Automatic recharging with load cell
- Manual recharging with jar via the auxiliary port
- Maintenance message display
- Maintenance procedures
- Data printing
- Database
- Electric scale calibration
- Parameter setting

### Features

- Support to clean the pipeline of A/C system on-vehicle
- With a variety of cleaning mode
- Equipped with large-size observing window with LED backlight
- Pressure gauges are installed vertically
- Special designed oil separator with patented technology
- With friendly interface
- With the auxiliary port

### Specification

- Power supply: AC220V~50/60Hz or AC110V~60Hz
- Vacuum pump: 4.5CFM, 5Pa
- Compressor: 1HP,12cc
- Load cell precision(tank): ±10g
- Tank capacity: 12L
- LCD display: 240\*128



Modularization design



Double fans



Friendly interface  
Run by hot key



Oil injection & drain  
controlled by switch





# A/C Service Machine

## GM-720YF

Flushing / Recovery / Recharge  
Semi-Automatic



R1234YF



### Function

- Timing pulse flushing
- Automatic recovering/recycling
- Automatic/manual used oil drain
- Timing vacuum
- Manual new oil injection
- Quantitative recharging
- Maintenance procedures

### Features

- For R1234yf or R134a refrigerant
- With stronger plastic shell
- Red or Blue color can be chosen
- Without manual operation valve
- LED display and Metal Dome
- Friendly interface

### Specification

- Voltage: AC220V~50Hz/AC220V~60Hz/AC110V~60Hz
- Current: 7/10A
- Compressor: 12.12cc
- Vacuum pump: 4.5CFM, 5Pa
- New oil bottle: 300ml
- Used oil bottle: 500ml
- Tank capacity: 12L
- Load cell precision(tank): ±10g
- Load cell precision(bottle): ±5g
- Work max. pressure: 20bar
- Size(LxWxH): 640×640×1270mm
- Gross weight: 106kg



Modularization design



Double fans



Friendly interface  
Run by hot key



Oil injection & drain  
controlled by switch

# A/C Service Machine

## GM-830A

Flushing / Recovery / Recharge  
Full Automatic

Dual System for R134a & R1234yf



### Function

- Timing pulse flushing
- Automatic recovering/recycling
- Automatic/manual used oil drain
- Timing vacuum
- Automatic/manual new oil injection
- Quantitative recharging
- Maintenance procedures
- Database
- Printing

### Features

- For R1234yf or R134a refrigerant
- With stronger plastic shell
- Red or Blue color can be chosen
- Without manual operation valve
- LCD display and Metal Dome
- Friendly interface

### Specification

- Voltage: AC220V~50Hz/AC220V~60Hz/AC110V~60Hz
- Current: 7/10A
- Compressor: 12.12cc
- Vacuum pump: 4.5CFM, 5Pa
- New oil bottle: 300ml
- Used oil bottle: 500ml
- Tank capacity: 12L
- Load cell precision(tank): ±10g
- Load cell precision(bottle): ±5g
- Work max. pressure: 20bar
- Size(LxWxH): 640×1270mm
- Gross weight: 106kg



Modularization design



Double fans



Friendly interface  
Run by hot key



Oil injection & drain  
controlled by switch

# ATF Exchanger

**GT-516**



## Function

- Cycle flushing
- Self-check flow direction
- Equal exchange
- Fill new fluid
- Recover used fluid
- Empty fluid tank
- Self-cleaning
- Auto add cleaner
- Exchange ATF under the similar temperature

## Features

- 10 inch LCD touch screen
- With database and print function
- Self-check flow direction automatically
- Exchanging ATF automatically
- Self-flushing pipeline for the use of different type of ATF
- Be with friendly interface and operating simple
- Can be customized

## Specification

- Voltage: DC12V / AC 220V
- Maximum power: 150W
- Pressure gauge: 0~150psi
- LCD display: 10 inch
- Oil filter accuracy: 5µm
- Oil pipe: 2.5m
- Oil tank: 20L \*2
- Noise: <70db
- Net weight: 45kgs



10" LCD Touch Screen



Oil injection & drain Controlled by switch



Different kinds connector

# ATF Exchanger

**GT-416**



## Function

- Semi-automatic transmission oil change equipment
- Cycle cleaning
- Replace with equal amounts
- Add new oil
- Recycle used oil
- Manual oil drain

## Features

- New and old oil viewing window: You can observe the cleanliness during oil change through the viewing window; compare the new oil and the old oil viewing window when it passes through the viewing window
- Function switching valve: When cycle cleaning is required, set it to the cleaning position, and when it needs to be exchanged, set it to the exchange position
- Filling port: Open the screw cap and add new ATF oil
- New/old oil pressure gauge: pressure when new oil is replaced and internal pressure of the gearbox
- Used oil flow regulating valve: adjusts the flow rate of used oil when it comes out
- New oil flow regulating valve: regulates the flow of new oil into the gearbox
- Oil outlet and return pipe: Connect to the oil outlet and return port of the gearbox

## Specification

- Voltage: DC12V
- Maximum power: 150W
- Pressure gauge: 0~150PSI
- Oil outlet pipe: 2.5M
- Oil return pipe: 2.5M
- Filter accuracy: 5µm
- Oil drum: 20L x 2
- Equivalent replacement error: ±0.1 liters
- Noise: <70dB
- Net weight: 35KG
- Gross weight: 45KG
- Standard connector 0-21#:



New & old oil viewing window



Durable universal wheel





# Injector Cleaner & Tester

**GI-600PA**

**Designed for GDI&PIEZO**

## Function

- Ultrasonic cleaning
- Resistance test
- Uniformity test
- Spray ability test
- Leakage test
- Injecting flow test
- Auto. test
- On-Vehicle cleaning
- Low resistance injectors test function
- Multi system setting
- For Piezo, GDI, EFI, SFI etc. type injector

## Features

- With special design storage drawer
- Supports the cleaning and testing of Piezo, GDI, EFI, SFI
- Special fuel separator structure design to improves work efficiency
- Test injectors' resistance one by one, support 1Ω resistant test
- Cabinet back door can opens or close with one touch
- Manually set the screen brightness, backlight and buzzer level
- Strong ultrasonic cleaning ability to remove carbon deposits and impurities
- Microcomputer control fuel pressure to ensure stable fuel pressure
- Humanization design to make system pressure restored to default values



## Specification

- Main unit power supply: AC220V±10% 50Hz/60Hz or AC110V±10% 60Hz
- Input power: 230W
- Ultrasonic cleaner power: 100W
- Resistance test accuracy: 0.1Ω
- Simulated RPM range: 100~9900rpm, step: 10rpm
- Time range: 5~300s, step: 5s
- Pulse width: 0.~25ms, step: 0.1ms
- Fuel tank capacity: 2000 ml
- Work pressure: 0-7 bar



# Injector Cleaner & Tester

**GI-600DA**

*Designed for GDI*



## Function

- Direct flushing
- Reverse flushing
- Ultrasonic cleaning
- On-vehicle cleaning for the car(optional)
- Spray ability test
- Uniformity test
- Injecting flow test
- Leakage test
- Auto. mode
- System setting
- For GDI, EFI, SFI etc. type injector

## Features

- New appearance and structure design
- Controllable backlight
- Electric control oil drainage
- Be with cooling fan
- High/Low voltage drive injector
- LCD display with glass panel
- Touch control board

## Specification

- Voltage:  $\pm$ AC220V  $\pm$ AC110V
- Input power(main unit): 350w
- Ultrasonic power: 60w
- Accuracy of tube: 2%
- RPM: 0~9999rpm / step: 10rpm
- PW: 0.1~30ms / step: 0.1ms
- Timer: 1~30min
- Tank capacity: ~4.5L
- LCD :128 x 64
- Fuel pressure: 0.1~10bar
- Air inlet pressure: 6~8bar
- Package size(LxWxH):540x520x580mm
- Gross weight: 25kg(4C)/28.5kg(6C)

## Attention

1. Avoid sunshine, rain, impact, dumping.
2. used under ventilated conditions.
3. Regular maintenance.
4. Empty tank if don't use in a long time.
5. Don't tilt upside down.
6. Wear goggles during operation



# Injector Cleaner

**GI-610**



- ▶ Injector cleaning
- ▶ Injector testing
- ▶ On-vehicle cleaning (optional)

## Features

- Direct flush
- Reverse flush
- Ultrasonic cleaning
- On-vehicle cleaning (optional adapters)
- Spray ability test
- Uniformity test
- Leakage test
- Injecting flow test
- Electronic drain

## Specification

- Power supply: AC220V~50/60Hz or AC110V~60Hz
- Input power of main unit: 200W
- Ultrasonic cleaner power: 60W
- Pressure: 0~7bar
- Accuracy of tube:  $\pm$ 2%
- RPM range: 0~9999rpm
- PW range: 0.1~30ms, step: 0.1ms
- Timing: 1~30min
- LED display
- LED background light
- Membrane keypad
- Top-supply fuel distributor



Drain port



Fan



LED backlight



Filling port



Ultrasonic Cleaner

Model	Description	
GI-600	6 cylinders	Without cabinet
GI-610	6 cylinders	With cabinet
GI-800	8 cylinders	Without cabinet
GI-810	8 cylinders	With cabinet



# Tire Changer

**TWC902**



## Features

- Swing arm and automatic type
- Manual operation of mounting/demounting tool
- Strong pneumatic bead breaker
- Plastic front cover 3 pedals, ergonomic design to make the working quicker and safer
- Optional plastic mounting/demounting head helps protect expensive alloy wheels
- ATV and Motorcycle adapter is optional



## Specification

Model	TWC902	Motor Power	0.75~1.1Kw
Rim Diameter	10"~26"	Bead-Remove Cylinder	2500Kg
Rim Width	3"~16"	Operating Pressure	0.8~1MPa
Max Wheel Diameter	960mm	Packing	1200*790*1860mm
Power Supply	220V1PH/380V3PH	Net Weight	310Kg



# Tire Changer



**TWC606**

## Features

- Tremendous power and control
- Aid mounting and demounting
- Pneumatic powered tilting column
- Lock rim for same sized wheel
- Alloy steel head with plastic protection
- 10 to 24 inch clamping range
- Diameter marks conduce to clamping
- Twin cylinders redouble the clamping force
- Plastic rim protector
- Pneumatic powered
- Shovel with plastic sleeve
- Powerful motor ensures best torque and speed
- Reliable transmission

## Specification

Model	TWC606	Motor Power	0.75~1.1Kw
Rim Diameter	10"~24"	Bead-Remove Cylinder	2500Kg
Rim Width	3"~16"	Operating Pressure	0.8~1MPa
Max Wheel Diameter	1000mm	Packing	1060*980*980mm
Power Supply	220V1PH/380V3PH	Net Weight	300Kg

# Tire Changer



**TWC602**

## Features

- Swing arm and automatic type
- Manual operation of mounting/demounting tool
- Strong pneumatic bead breaker
- Plastic front cover 3 pedals, ergonomic design to make the working quicker and safer
- Optional plastic mounting/demounting head helps protect expensive alloy wheels
- ATV and Motorcy adapter is optional.



## Specification

Model	TWC602	Motor Power	0.75~1.1Kw
Rim Diameter	10"~24"	Bead-Remove Cylinder	2500Kg
Rim Width	3"~16"	Operating Pressure	0.8~1MPa
Max Wheel Diameter	960mm	Packing	1160*980*980mm
Power Supply	110V/220V1PH 220V/380V3PH	Net Weight	280Kg





# Tire Changer



**TWC562S**

## Features

- Swing arm and automatic type
- Manual operation of mounting/demounting tool
- Strong pneumatic bead breaker
- Ergonomic design of 3 pedals makes the operation quicker and safer
- Optional plastic mounting/demounting head helps to protect expensive alloy wheels
- Motorcycle adapter is optional



## Specification

Model	TWC562S	Motor Power	0.75~1.1Kw
Rim Diameter	10"~24"	Bead-Remove Cylinder	2500Kg
Rim Width	3"~16"	Operating Pressure	0.8~1MPa
Max Wheel Diameter	1040mm	Packing	1150*1000*1170mm
Power Supply	220V1PH/380V3PH	Net Weight	220Kg

# Tire Changer



**TWC881S**

## Features

- Swing arm and automatic type
- Manual operation of mounting/demounting tool
- Strong pneumatic bead breaker
- Plastic front cover 3 pedals, ergonomic design to make the working quicker and safer
- Optional plastic mounting/demounting head helps protect expensive alloy wheels
- ATV and Motorcy adapter is optional.



## Specification

Model	TWC881S	Motor Power	0.75~1.1Kw
Rim Diameter	10"~24"	Bead-Remove Cylinder	2500Kg
Rim Width	3"~16"	Operating Pressure	0.8~1MPa
Max Wheel Diameter	960mm	Packing	1050*770*900mm
Power Supply	220V1PH/380V3PH	Net Weight	200Kg



# Tire Changer

**TWC851S**



## Features

- Swing arm and automatic type
- Manual operation of mounting/demounting tool
- Strong pneumatic bead breaker
- Ergonomic design of 3 pedals makes the operation quicker and safer
- Optional plastic mounting/demounting head helps to protect expensive alloy wheels
- Motorcycle adapter is optional



## Specification

Model	TWC851S	Motor Power	0.75~1.1Kw
Rim Diameter	10"~22"	Bead-Remove Cylinder	2500Kg
Rim Width	3"~16"	Operating Pressure	0.8~1MPa
Max Wheel Diameter	960mm	Packing	970*770*900mm
Power Supply	220V1PH/380V3PH	Net Weight	195Kg

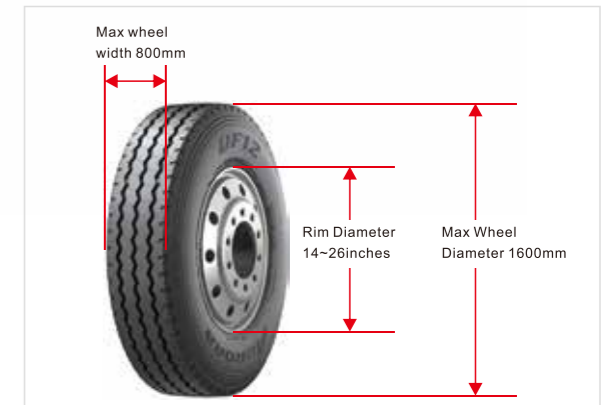
# Truck Tire Changer

**TWC1600**



## Features

- Particularly suitable for truck tires, passenger car tires and industrial vehicle tires with deep grooved rims, tubeless tires with ring
- Hydraulic motor with quick rotation
- All movements of the working parts are guided by the mobile
- Low-voltage control handle
- Clockwise and anticlockwise rotation of chuck
- Universal self-centering chuck
- Rim capacity: 14"-26"



## Specification

Model	TWC1600	Gearbox Motor	1.5KW 220V/380V-3PH
Rim Diameter	14"~26"	Draulic Pump Motor	1.5KW 220V/380V-3PH
Max Wheel Width	800mm	Operating Pressure	0-130Mpa
Max Wheel Diameter	1600mm	Packing	2030*1600*940mm
Max Wheel Weight	500kg	Net Weight	670Kg



# Wheel Balancer

**KWB950**



## Specification

Model	KWB950	Rim Width	1.5"-20"
Rim Diameter	10"~30"	Motor Power	185~320W
Max Wheel Diameter	1000mm	Power Supply	220V 1ph
Max Wheel Weight	80Kg	Balancing Speed	≤195 r.p.m
Balancing Precision	±1g	Weight	120kg
Noise	<70dB	Packing	1170*980*1200mm

## Features

- Suitable for car, light commercial vehicle wheels
- Automatic start/stop
- Gram/ounce selection and millimeter/inch selection
- Self diagnosis and calibration
- ALU1/ALU2/ALU3 functions for light alloy wheels
- Full display for a.b.d reading







# Wheel Balancer

## KWB900



### Specification

Model	KWB900	Rim Width	1.5"-20"
Rim Diameter	10"~30"	Motor Power	185~320W
Max Wheel Diameter	1000mm	Power Supply	220V 1ph
Max Wheel Weight	80Kg	Balancing Speed	≤195 r.p.m
Balancing Precision	±1g	Weight	120kg
Noise	<70dB	Packing	1170*980*1200mm

### Features

- Suitable for car, light commercial vehicle wheels
- Automatic start/stop
- Gram/ounce selection and millimeter/inch selection
- Self diagnosis and calibration.
- ALU1/ALU2/ALU3 functions for light alloy wheels
- Full display for a.b.d reading



# Wheel Balancer

## KWB300



### Specification

Model	KWB300	Rim Width	1.5"-20"
Rim Diameter	10"~24"	Motor Power	185~320W
Max Wheel Diameter	1000mm	Power Supply	220V 1ph
Max Wheel Weight	70Kg	Balancing Speed	≤195 r.p.m
Balancing Precision	±1g	Weight	100kg
Noise	<70dB	Packing	970*580*1280mm

### Features

- Suitable for car, light commercial vehicle wheels
- Automatic start/stop
- Gram/ounce selection and millimeter/inch selection
- Self diagnosis and calibration
- ALU1/ALU2/ALU3 functions for light alloy wheels
- Full display for a.b.d reading







# Wheel Balancer

## /// KWB70BS



### Specification

Model	KWB70BS	Rim Width	1.5"-20"
Rim Diameter	10"~24"	Motor Power	185~320W
Max Wheel Diameter	1000mm	Power Supply	220V 1ph
Max Wheel Weight	70Kg	Balancing Speed	≤195 r.p.m
Balancing Precision	±1g	Weight	100kg
Noise	<70dB	Packing	970*770*1080mm

### Features

- Suitable for car, light commercial vehicle wheels
- Automatic start/stop
- Gram/ounce selection and millimeter/inch selection
- Self diagnosis and calibration
- ALU1/ALU2/ALU3 functions for light alloy wheels
- Full display for a.b.d reading



# Truck Wheel Balancer

## /// KWB1400

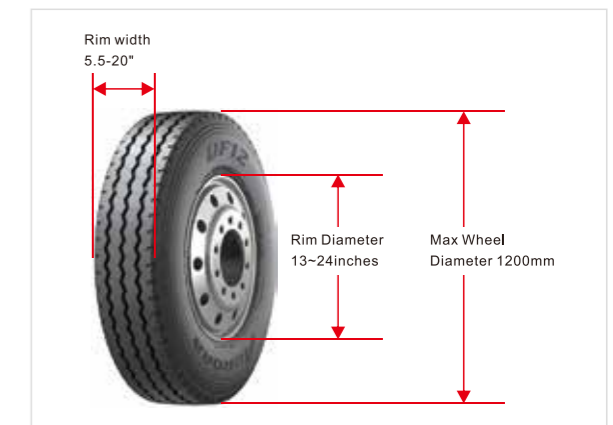


### Specification

Model	KWB1400	Rim Width	5.5"-20"
Rim Diameter	13"~24"	Motor Power	550W
Max Wheel Diameter	1200mm	Packing	1230*970*1200mm
Balancing Precision	±10g	Balancing Speed	≤200 r.p.m
Noise	<70dB	Weight	250kg

### Features

- Easy operation of lifting device
- Mount-demount tyre with protection lever, well-consideration safety and stable
- With high-capacity and high-stability can realize the converting of big or small model
- Wheels Suitable for truck, car and motorcycle wheels
- Equipped with breaking pedal





## Two Post Lift

### LT-240B



#### Features

- Floor plate design, suitable for workshop with the not high storey
- Adopt double cylinders, 4\*4 higher and stronger chain, with the wire rope balance system
- Manual locks release from two sides
- Rubber pad door-opening protection
- Rubber support with first, second and third level spiral to adjust the height
- Limited switch
- The arm adopts two stages or three stages design, large range adjustment, suitable for different vehicle classic

#### Specification

Model	LT-240B	Motor Power	2.2KW
Lifting Capacity	4000kg	Power Supply	1PH/220V or 3PH/380V
Lifting Height	1800mm	Packing	2900*440*600mm, 820*250*310mm
Min.Height	115mm	Weight	565kg
Width Between Pillars	2780mm	Optional Colour	Grey
Lifting Time	45-60s	Container	20'/24pcs, 40'/46pcs
Outline Dimensions	L3320 * W500 * H2820	Rotation Angle	90°





# Two Post Lift

**LT-240BA**



## Features

- Floor design, suitable for the bottom not high in the auto repair
- Adopt double cylinder, 4x4 higher and stronger chain, the wire rope balance system
- Electric release
- Rubber pad door-opening protection
- Secure fence protect the toes
- Rubber support pad adopts double helix adjustment height and height increase joint
- Limit switch

## Specification

Model	<b>LT-240BA</b>	Motor power	<b>2.2kw-380v or 2.2kw-220v</b>
Lifting Capacity	<b>4000kg</b>	Power Supply	<b>1PH/220V or 3PH/380V</b>
Lifting Height	<b>1850mm</b>	Packing	<b>2830*500*750mm 820*250*310mm</b>
Min. Height	<b>120mm</b>	Weight	<b>590kg</b>
Width Between Pillars	<b>2790mm</b>	Optional Colour	<b>Grey</b>
Lifting Time	<b>50S-60S</b>	Outline Dimensions	<b>L3320 * W500 * H2820</b>

# Two Post Lift

**LT-240C**



## Features

- Clear floor design, save space
- Adopt double cylinders, 4\*4 higher and stronger chain, with the wire rope balance system
- Manual locks release from two sides
- Rubber pad door-opening protection
- Rubber support with first, second and third level spiral to adjust the height
- Limited switch
- The arm adopts two stages or three stages design, large range adjustment, suitable for different vehicle chassis

## Specification

Model	<b>LT-240C</b>	Motor Power	<b>2.2KW</b>
Lifting Capacity	<b>4000kg</b>	Power Supply	<b>1PH/220V or 3PH/380V</b>
Lifting Height	<b>1800mm</b>	Packing	<b>3800*440*780mm, 820*250*310mm</b>
Min. Height	<b>115mm</b>	Weight	<b>600kg</b>
Width Between Pillars	<b>2780mm</b>	Optional Colour	<b>Grey</b>
Lifting Time	<b>45-60s</b>	20' Container	<b>15pcs</b>
Outline Dimensions	<b>L3370 * W500 * H3670</b>	40' Container	<b>36pcs</b>



# Two Post Lift

**LT-240CS**



## Features

- Clear floor design, save space
- Adopt double cylinder, 4x4 higher and stronger chain, the wire rope balance system
- One side manual release
- Rubber pad door-opening protection
- Secure fence protect the toes
- Rubber support pad adopts double helix adjustment height and height increase joint
- Limit switch

## Specification

Model	<b>LT-240CS</b>	Motor Power	<b>2.2kw-380v or 2.2kw-220v</b>
Lifting Capacity	<b>4000kg</b>	Power Supply	<b>1PH/220V or 3PH/380V</b>
Lifting Height	<b>1850mm</b>	Packing	<b>3800*440*780mm 820*250*310mm</b>
Min. Height	<b>120mm</b>	Weight	<b>650kg</b>
Width Between Pillars	<b>2790mm</b>	Optional Colour	<b>Grey</b>
Lifting Time	<b>50S-60S</b>	Outline Dimensions	<b>L3320*W500*H3670</b>

# Two Post Lift

**LT-240CA**



## Features

- Clear floor design, save space
- Adopt double cylinder, 4x4 higher and stronger chain, the wire rope balance system
- Electric release
- Rubber pad door-opening protection
- Secure fence protect the toes
- Rubber support pad adopts double helix adjustment height and height increase joint
- Limit switch

## Specification

Model	<b>LT-240CA</b>	Motor Power	<b>2.2kw-380v or 2.2kw-220v</b>
Lifting Capacity	<b>4000kg</b>	Power Supply	<b>1PH/220V or 3PH/380V</b>
Lifting Height	<b>1850mm</b>	Packing	<b>2830*500*750mm 820*250*310mm</b>
Min. Height	<b>120mm</b>	Weight	<b>650kg</b>
Width Between Pillars	<b>2790mm</b>	Optional Colour	<b>Grey</b>
Lifting Time	<b>50S-60S</b>	Outline Dimensions	<b>L3320*W500*H3670</b>





# Scissor Lift

**LT-640**



## Features

- Utilizing ground hidden flat structure, and cover small space
- Pneumatic self-locking, safe and reliable
- Hydraulic system adopts an integrated valve plate system with imported seal, ensure the stability and working life of the machine
- With manual pre-interface, when power supply is off, lift can be down by manual
- It is composed of four parts, hydraulic system, pneumatic system and electric system
- Oil cylinder with upper return oil, prevent oil cylinder rust

## Specification

Model	<b>LT-640</b>	Lifting Time	<b>50-60s</b>
Lifting Capacity	<b>4000kg</b>	Platform Length	<b>1540mm</b>
Lifting Height	<b>2100mm</b>	Platform Width	<b>550mm</b>
Lowest Height	<b>340mm</b>	Power Supply	<b>3PH/ 380V</b>





# Scissor Lift

**LT630TZ**



## Features

- Ultra thin structure, surface mount, the initial landing height is 105mm, occupying small space
- The original Italy-imported hydraulic pump valve and electrical components
- Double cylinder drive, safe and stable synchronization
- Meet the needs of different vehicles' repair and detection

## Specification

Model	<b>LT630TZ</b>	Platform Length	<b>1450mm</b>
Lifting Capacity	<b>3200kg</b>	Platform Width	<b>60mm</b>
Lifting Height	<b>1800mm</b>	Platform Height	<b>115mm</b>
Lifting Time	<b>50-60s</b>	Power Supply	<b>3PH/ 380V</b>

# Scissor Lift

**LT-750W**



## Features

- In-ground mounted, occupied small space
- Electric control pneumatic release, safety and reliable
- Hydraulic system adopts the advanced integrated valve plate oil and imports of seal parts
- Power failure can adopt manually will the car drop out
- Oil cylinder with upper return oil, prevent oil cylinder rust

## Specification

Model	<b>LT-750W</b>	Motor Power	<b>2.2kw-380v or 2.2kw-220v</b>
Lifting Capacity	<b>5000kg</b>	Power Supply	<b>1PH/220V or 3PH/380V</b>
Lifting Height	<b>2100mm</b>	Jack Lifting Height	<b>480mm</b>
Min. Height	<b>360mm</b>	Weight	<b>2500kg</b>
Rated Oil Pressure	<b>24MPa</b>	Optional Colour	<b>Grey</b>
Length of The Platform	<b>5000mm</b>	Packing	<b>5050*640*420mm 5050*640*420mm 1100*360*490mm</b>





# Scissor Lift

**LT-735W**



## Features

- In-ground mounted, occupied small space
- Electric control pneumatic release, safety and reliable
- Hydraulic system adopts the advanced integrated valve plate oil and imports of seal parts
- Power failure can adopt manually will the car drop out
- Oil cylinder with upper return oil, prevent oil cylinder rust

## Specification

Model	<b>LT-735W</b>	Motor Power	<b>2.2kw-380v or 2.2kw-220v</b>
Lifting Capacity	<b>3500kg</b>	Power Supply	<b>1PH/220V or 3PH/380V</b>
Lifting Height	<b>1700mm</b>	Jack Lifting Height	<b>450mm</b>
Min. Height	<b>340mm</b>	Weight	<b>1900kg</b>
Rated Oil Pressure	<b>24MPa</b>	Optional Colour	<b>Grey</b>
Length of The Platform	<b>4200mm</b>	Packing	<b>4250*663*800mm 4250*663*800mm 370*520*1100mm</b>

# Four Post Lift

**LT-440W**



## Features

- Adopt the electric release, manual and pneumatic release
- Hydraulic power unit configuration throttling device, they can always adjust the rate of decline
- Hydraulic cylinder drive, rope drive, quick and smooth lifting
- With wire control security lock, with a wire rope fracture protection, operation safety
- Adopt the electrical release, eight-point locking system, easy to operate
- Can be locked in the desired height of operation, safety and reliability
- Runway spacing is adjustable for different wheel base vehicle
- With the second lift pulley

## Specification

Model	<b>LT-440W</b>	Motor Power	<b>2.2KW</b>
Lifting Capacity	<b>4000kg</b>	Rated Oil Pressure	<b>18Mpa</b>
Platform Lifting Height	<b>1500mm</b>	Outline Dimensions	<b>L4200*W550*H200mm</b>
Min. Height	<b>160mm</b>	Packing	<b>4650*610*880mm</b>
Width Between Pillars	<b>2780mm</b>	Weight	<b>1200kg</b>
Power Supply	<b>3PH/ 380V</b>	Optional Colour	<b>Red/Grey</b>
Secondary Lifting Height	<b>350mm</b>	Container	<b>20'/12pcs</b>



# Scissor Lift

**LT-630M**



## Features

- The lifting platform extension, according to the different models of the vehicle support the ramp and extension, flexible use, cover small space
- Pneumatic release, safe and reliable
- The initial height is lower (110mm), have sliding ramp and extension
- Adopt axis driven, synchronization performance good, lifting capacity well
- Hydraulic system adopted imported electromagnetic valve and seal components, ensure the stability and working life of the machine
- When the power supply is off, lift and vehicle can be down by manual
- Rising and falling have safety alarm device
- Oil cylinder with upper return oil, prevent oil cylinder rust

## Specification

Model	<b>LT-630M</b>	Motor Power	<b>3.0kw-380v or 3.0kw-220v</b>
Lifting Capacity	<b>3000kg</b>	Power Supply	<b>1PH/220V or 3PH/380V</b>
Lifting Height	<b>1000mm</b>	Packing	<b>1620*2020*230mm 1100*360*490mm</b>
Min. Height	<b>110mm</b>	Weight	<b>580kg</b>
Rated Oil Pressure	<b>24MPa</b>	Optional Colour	<b>Grey</b>







# clampless wheel alignment system new generation

**GA-800**



## Product Description

Clampless wheel alignment measurements in just 5 seconds  
Without any contact with the vehicle and without getting out of the car, in just 5 seconds carefully measures toe, camber, thrust angles.

How does it work? you just have to stop the vehicle between the columns, and a high-tech 3D scanner measurement system does the rest. totally revolutionizes the world of wheel alignment: no clamping, no targets nor detectors. No manual operations are required for the different wheel basis, not even a leveled lift is required. No need to perform run out compensation and no need to apply brake pedal lock to measure caster. Extreme simplicity

The advanced and user-friendly software, managed through remote control, contributes to grant an outstandingly convenient user-friendly approach, thanks to the automatic start of the measuring process when vehicle enters the working area, to the automatic detection of all procedures and to the automatic pre-selection of the vehicle's specs according to the wheel basis. Increase your business

By minimizing efforts and time for wheel alignment measurements, can check efficiently all of your customers vehicles by generating a clear report of the status of their vehicle, enhancing your business and their satisfaction.

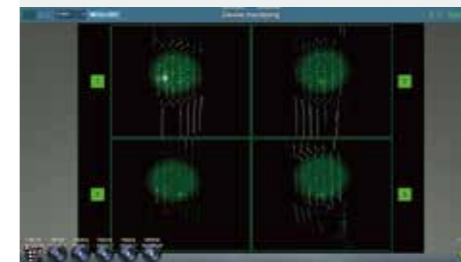
## Accuracy

Item	Accuracy	Range	Total Range
Camber	±0.02°	±8°	±8°
Caster	±0.05°	±19°	±19°
Front SAI	±0.05°	±19°	±19°
TOE	±0.01°	±2°	±8°
Thrust Angle	±0.02°	±2°	±4°
Wheel Base Diff	±0.03°	±2°	±8°
Wheel Base	±0.64cm	2000mm—3400mm	3400mm
Track Wide	±0.64cm	<6000mm	<6000mm

Turn on the machine and click the shortcut on desktop and wait around one minute it will be display as below, drive the car on the runway



Camera monitor: Select the left down icon "camera monitor" view the target images as below picture. All 4 wheels images must be in the middle of the windows and display "green".

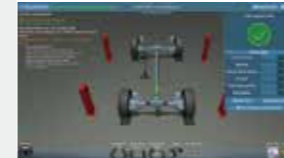


Click right down green icon to exit "camera monitor".

Select the alignment car model: In initial screen select to select the car manufacturer Select the car model and click



When you selected a car it will be display the following pictures are the interface of measurement



Wait a second it will be display the alignment test result below



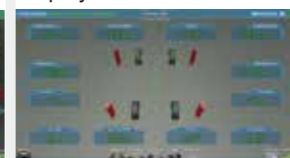
Click "adjust rear wheel" will display



Click "adjust front wheel" will display



Click "chassis data" will display



Fits all kinds of lifts