



BRIGHTER LED LIGHTING CO., LTD



What you see, where brightness is.



This Catalogue was printed
in 2024, specifications may
change with improvement
without prior notice

Brighter LED Lighting Co., Ltd.

✉ sales01@brighterledlighting.com

☎ + 86 757 85221716

☎ + 86 757 85221719

🌐 www.brtled-light.com

🏠 No. 10, Keji East Road, Songxia Industrial Zone, Songgang,
Foshan, Guangdong

ABOUT **Brighter LED**

BRTLED is an innovative national high-tech enterprise integrating research, design, production and sales of automotive and industrial LED lighting solutions widely applied for Off-road, Forestry, Mining, Agriculture, Heavy Duty Machinery, UTV, ATV, Marine, Outdoor Adventure etc.

BRTLED was established in 2013, rather than making imitated copies out of public mould, BRTLED has been dedicating to the investment of our own original designs, private tooling and patented technologies.

Our factory is located in High-Tech Song Xia Industrial Development Zone, Foshan City, It's equipped with the latest modernized production lines with automatic assembling facilities reaching 50,000pcs monthly production capacity. It is set up with independent electrical, optical, structural, electronics laboratories with internationally advanced testing facilities, bringing BRTLED lights to the highest light output performance and highest EMC/EMI level e.g.CISPR-Class5.

What makes BRTLED stand out in the LED lighting industry relies in the whole team's professional knowledge and extensive skills, the never give-up efforts in the utilization of brand new technologies in optics, electronics, structure etc., the pursuit of perfection on craftsmanship, 100% multi-inspection before each shipment, and the strong sense of responsibility to customers from whole BRT team.

Besides the ISO/IATF 16949 quality control system, BRTLED had obtained 200+certificates and worldwide patents, e.g. DOT, AMECA, Emark (ECE R112/R10/R23/R65/6/R7), CE.IP68, IP69, ROHS, Vibration Tests, CISPR25-Class5, Chinese, European, American, Invention Patents for Design and technology etc.

By adhering to the concept of “Innovation makes the world brighter.” BRTLED would base ourselves on the world level and continue to offer more and more unique and attractive products and services with enriched creativity and greatest efforts so as to best meet the demands of cliects globally and to strive for the establishment of first class enterprise of “high efficiency, energy-saving, environmental protection and harmony”.



Product Introduction

LED Camping Lantern BLCL001 & BLCL001-A

This camping lantern is designed to solve the sore points that market products have, like heat dissipation, fragility, dazzling light and short lifespan.

With white and amber light, it gives a sense of atmosphere of soft lighting without sacrificing style. It is a perfect combination of traditional style and new technology.

Product Highlights

- Exclusive automotive grade optics
- Light conduction technology
- SMD LED chip application
- Dual-kelvins: 1800K/6000K
- Hardened PV+SPCC housing
- Mosquito repellent amber light
- Long lifespan and more stability

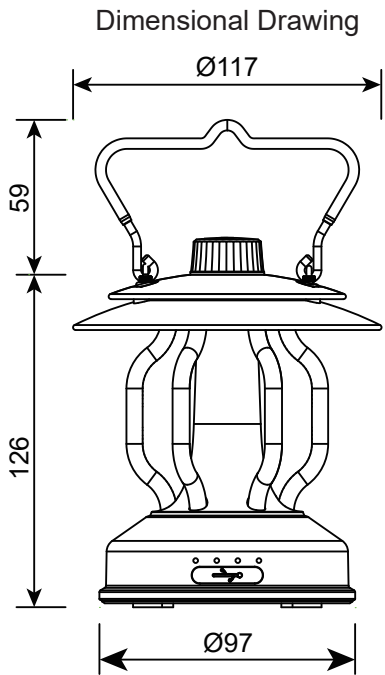
Application Areas

This camping light can be used for garden, indoor, tent, cafe, bar, restaurant, party, church, camping, camping ground and home power outage.



LED Camping Lantern

BLCL001 & BLCL001-A



LED Chip

Light Guide Tube

The light evenly conducted by the light guide tube outward and downward



Technical Data Sheet

Model	BLCL001	BLCL001-A
Watt(W)	4.5W	4W
Luminous Flux (lm)	30-500lm	30-400lm
Light Source	SMD	SMD
CCT(K)	1800K/6000K	1800K/6000K
Beam Angle (°)	360°	360°
Color Adjustable	YES	YES
Dimmable or not	YES	YES
Endurance(h)	8-235h	6.8-205h
Charging Parameters	5V/2A	5V/2A
Charging Time(h)	3.5-4h	3-3.7h
Battery Capacity	6000mAh 3.7V 22.2Wh	5200mAh 3.7V 20.3Wh
Charging Port	Type-C	Type-C
IP Rating	IPX5	IPX5
High Degree of Resistance to Falling	1M	1M
Product Finishing	Forest green/white	Forest green/white
Optics Material	PC	PC
Housing Material	SPCC	SPCC
Operating Temp.(°C)	-10℃~+45℃	-10℃~+45℃
Charging Ambient Temperature(°C)	0-45℃	0-45℃



Product Introduction

LED Flashlight
BLFL001

This flashlight with full-black design leads the modern fashion. It is featured with the side reflector optics, improving lighting efficiency by 30%.

It is designed with both spot beam and flood beam with user-friendly cut-off line, perfectly preventing dazzling from the oncoming people. Additionally, it can function as a power bank.

Product Highlights

- Exclusive automotive grade optics
- Scaly armored reflector design
- High-brightness LUMINUS LED
- Aviation aluminum housing
- High beam distance:1027M
- Power bank function
- Spot beam with wide angle
- IP Rating:IPX6

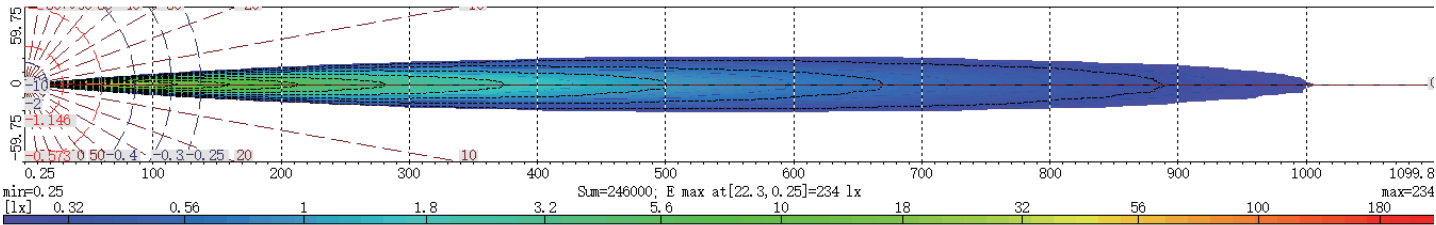
Application Areas

This flashlight can be used for rescue search, night maintenance, home power outage, fishing, night patrol, night hunting and outdoor adventure.

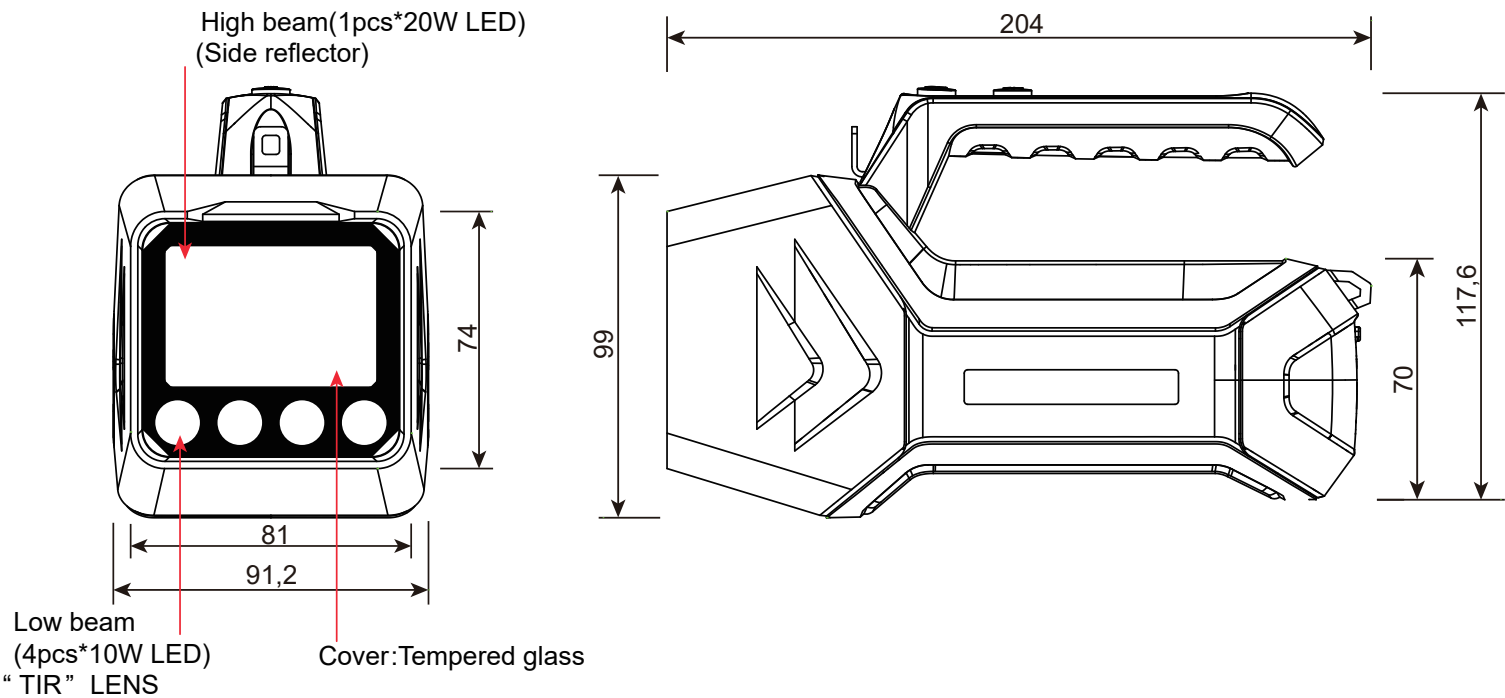




Aerial View



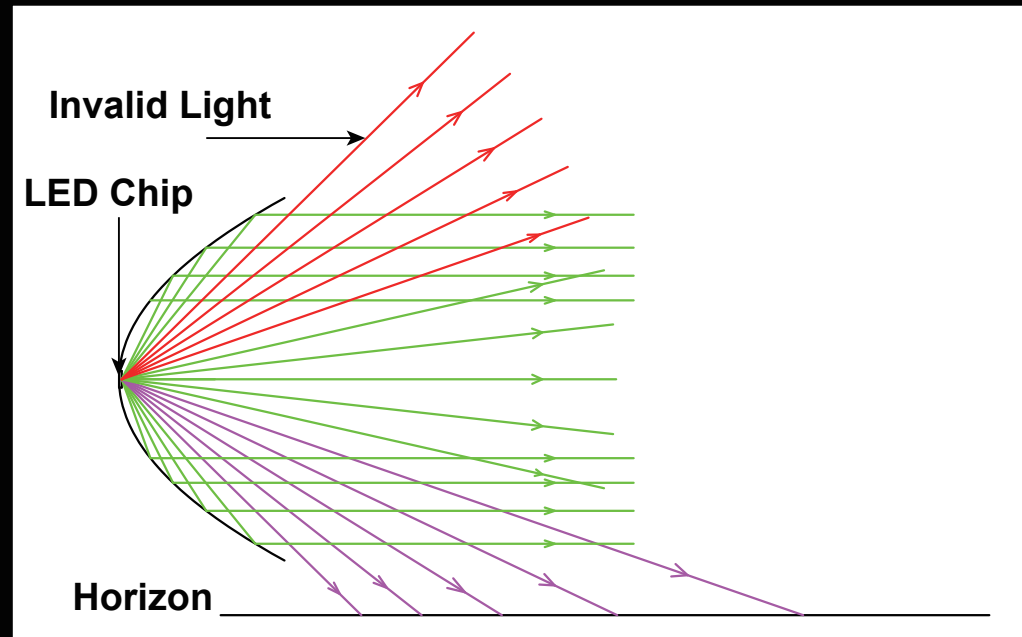
Dimensional Drawing



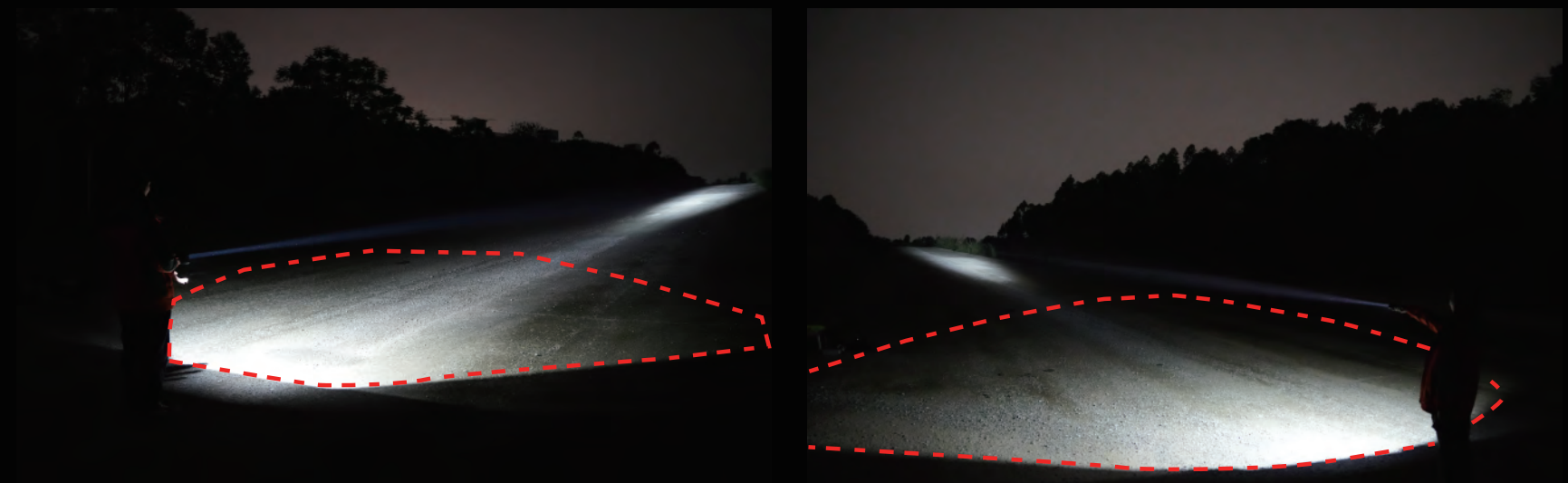
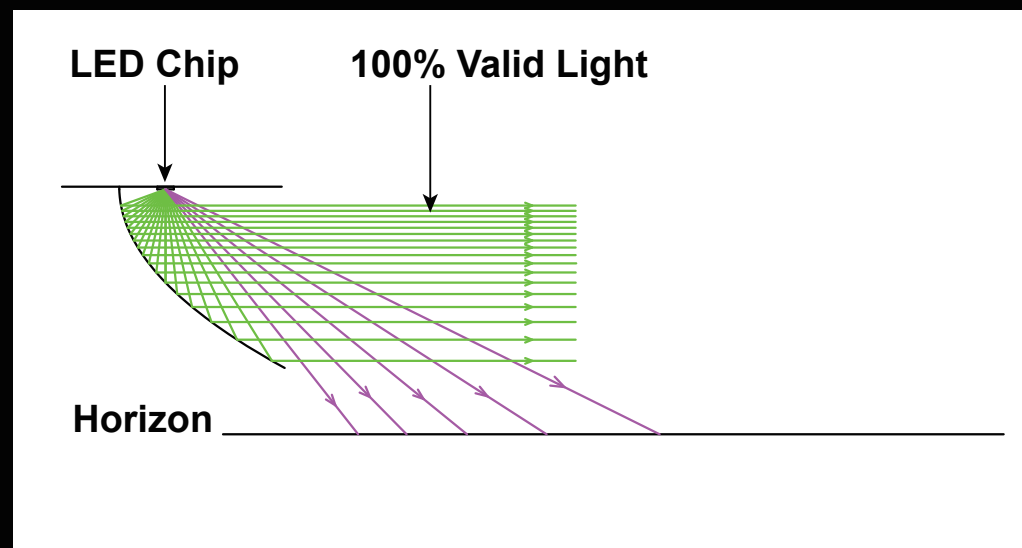
Technical Data Sheet

Model	BLFL001	BLFL001-A
Spot Beam Watt(W)	21W	21W
Flood Beam Watt(W)	32.5W	32.5W
Spot Beam Luminous(lm)	405lm~1780lm	405lm~1780lm
Flood Beam Luminous(lm)	80~3700lm	80~3700lm
Spot Beam Intensity (cd)	63550cd/141000cd/2108400cd/263550cd	63550cd/141000cd/2108400cd/263550cd
Flood Beam Intensity (cd)	490cd/4350cd/11900cd/23800cd	490cd/4350cd/11900cd/23800cd
Spot Beam Distance @0.25lux(m)	463m/751m/918m/1027m	463m/751m/918m/1027m
Flood Beam Distance @0.25lux(m)	44m/132m/218m/308m	44m/132m/218m/308m
Spot Beam LED Chips	LUMINUS	LUMINUS
Flood Beam LED Chips	SMD	SMD
Spot Beam CCT(K)	6500K	6500K
Flood Beam CCT(K)	6500K	6500K
Spot Beam Angle (°)	5°	5°
Flood Beam Angle (°)	24°	24°
Light Color Adjustable	NO	NO
Dimmable Or Not	YES	YES
Power Bank Function Or Not	YES	YES
Charging Output	5V/2A	5V/2A
Spot Beam Endurance Time(h)	6.5-87h	3.5-45h
Flood Beam Endurance Time(h)	5-46h	2.7-28h
Charging Input	5V 3A	5V 3A
Charging Time(h)	5.5-7h	3-4.5h
Battery Capacity	10000mAh 7.4V 74Wh	5000mAh 7.4V 37Wh
Weights(g)	900g	805g
IP Rating	IPX5	IPX5
Charging Port	Type-C	Type-C
Anti-fall Height(M)	1M	1M
Product Surface Color	Red & Black/Orange & Black/ Yellow & Black	
Optics Material	PC	PC
Housing Material	PC+ABS	PC+ABS
Operating Temp.(°C)	-10℃~45℃	-10℃~45℃
Charging Ambient Temperature(°C)	0-45℃	0-45℃

Optics Comparison

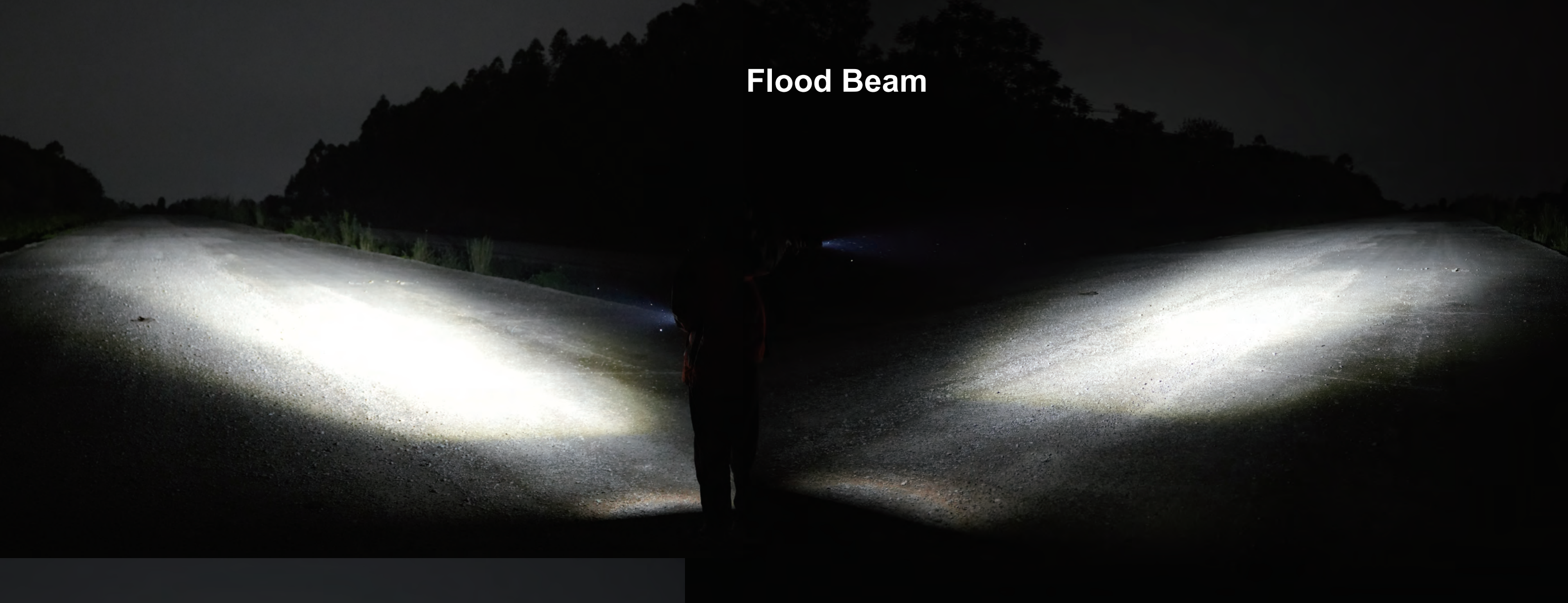


Regular Round Flash Light Optics

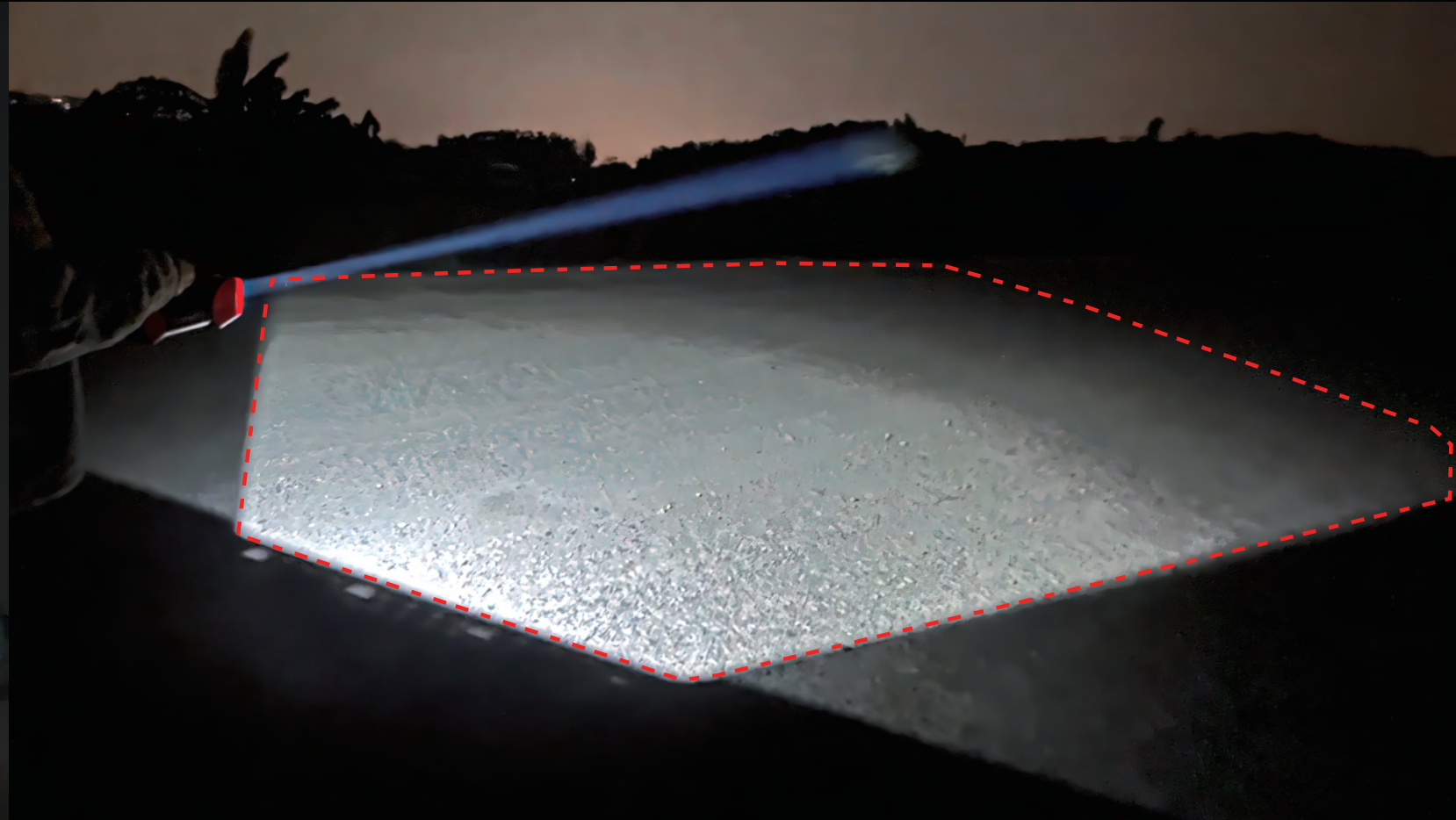
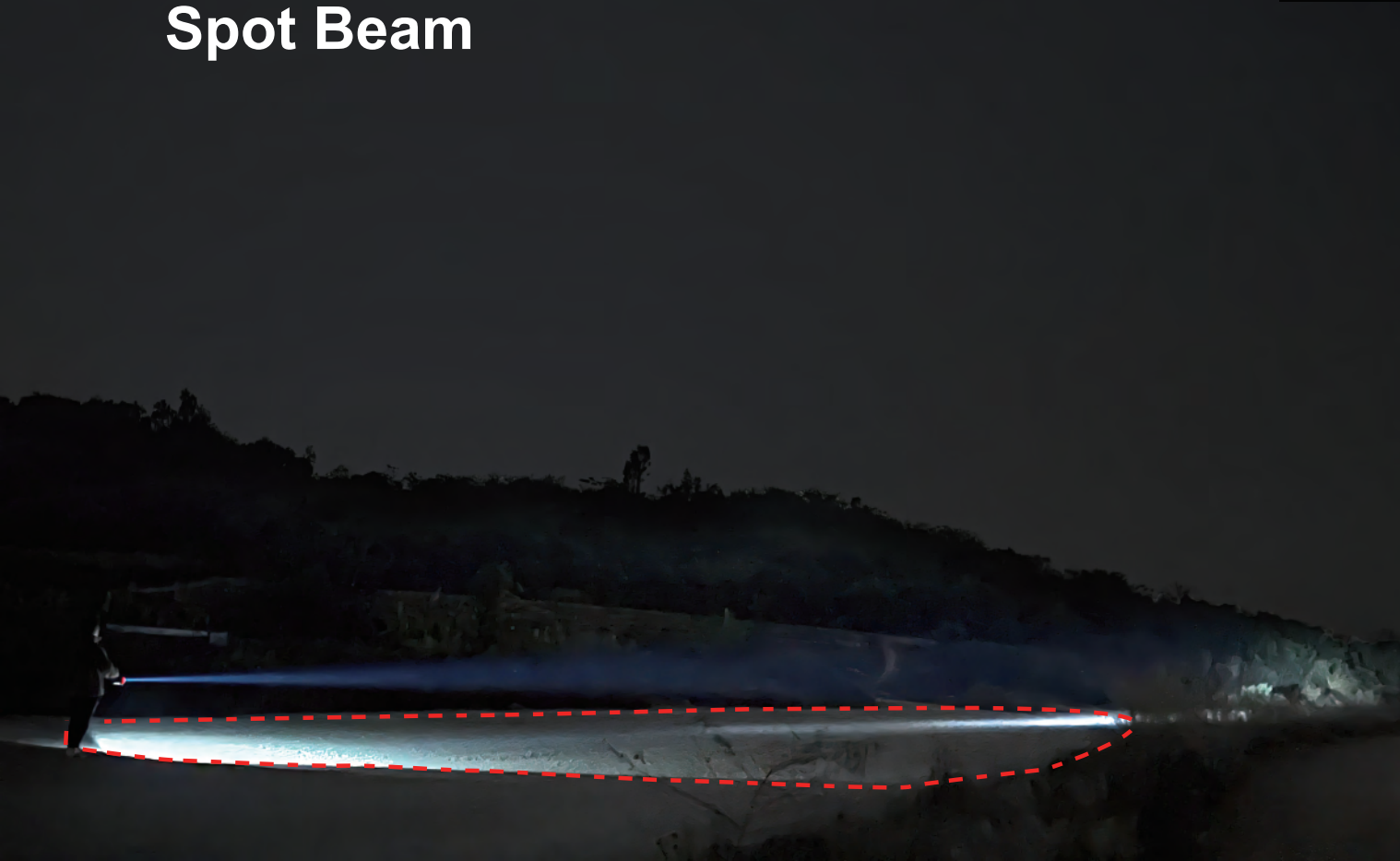


Side Reflector Optics from BRT

Flood Beam



Spot Beam



Product Introduction

LED Flashlight
BLFL002

This flashlight with full-black design leads the modern fashion. It is featured with the side reflector optics, improving lighting efficiency by 30%.

It is designed with both spot beam and flood beam with user-friendly cut-off line, perfectly preventing dazzling from the on coming people. Additionally, it can function as a power bank.

Product Highlights

- Exclusive automotive grade optics
- Scaly armored reflector design
- High-brightness LUMINUS LED
- Aviation aluminum housing
- High beam distance:1027m
- Power bank function
- Spot beam with wide angle

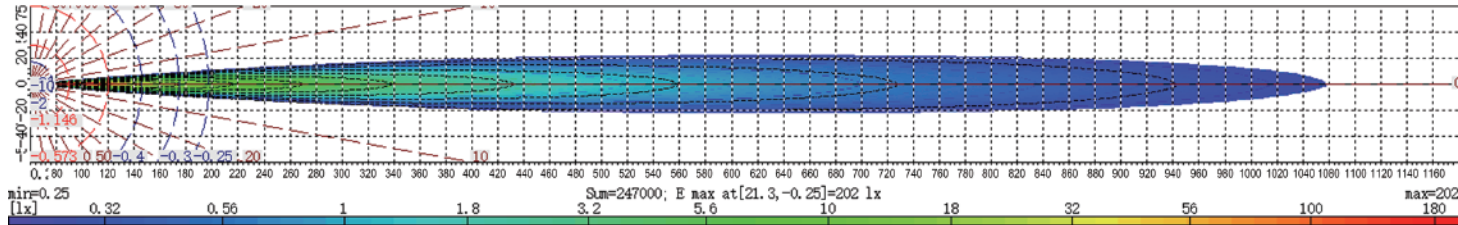
Application Areas

This flashlight can be used for flashaholics, rescue, search, night maintenance, home power outage, fishing, night patrol, night hunting and outdoor adventure.

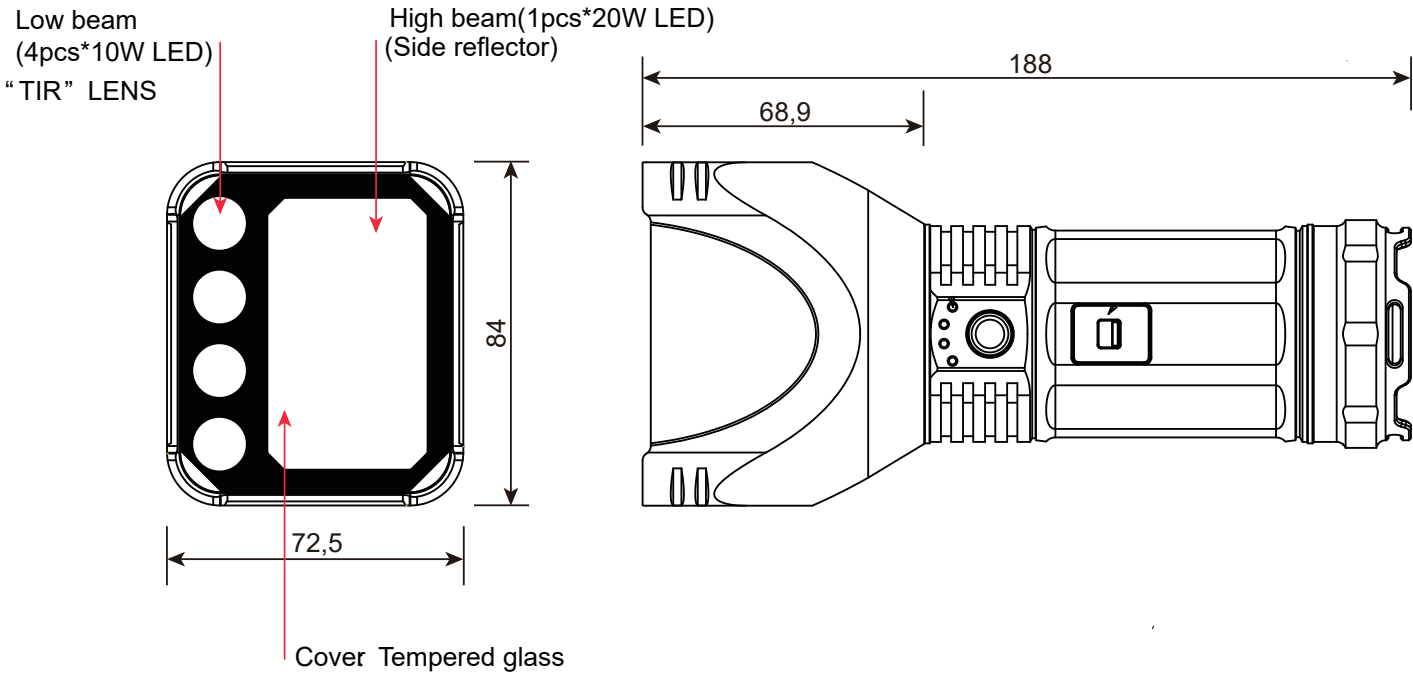




Aerial View



Dimensional Drawing



Technical Data Sheet

Model	BLFL002
Spot Beam Watt(W)	18.5W
Flood Beam Watt(W)	29W
Spot Beam Luminous(lm)	98lm~1860lm
Flood Beam Luminous(lm)	35~3670lm
Spot Beam Intensity (cd)	15900cd/134900cd/209600cd276300cd
Flood Beam Intensity (cd)	1730cd/9500cd/15300cd/21100cd
Spot Beam Distance @0.25lux(m)	252m/735m/915m/1051m
Flood Beam Distance @0.25lux(m)	83m/195m/247m/291m
Spot Beam LED Chips	LUMINUS
Flood Beam LED Chips	SMD
Spot Beam CCT(K)	6500K
Flood Beam CCT(K)	6500K
Spot Beam Angle (°)	5°
Flood Beam Angle (°)	24°
Light Color Adjustable	NO
Dimmable Or Not	YES
Power Bank Function Or Not	YES
Charging Output	5V/2A
Spot Beam Endurance Time(h)	3.8-92h
Flood Beam Endurance Time(h)	2.8-39h
Charging Input	5V 3A
Charging Time(h)	5-6.5h
Battery Capacity	5000mAh 11.1V 55.5Wh
Weights(g)	810g
IP Rating	IPX5
Charging Port	Type-C
Anti-fall Height(M)	1M
Product Surface Color	Black
Optics Material	PC
Housing Material	AL6061-T5 Aviation Aluminum
Operating Temp.(°C)	-10℃~45℃
Charging Ambient Temperature(°C)	0-45℃



Product Introduction

LED Flashlight BLFL003

This flashlight with full-black design leads the modern fashion. It is featured with the side reflector optics, improving lighting efficiency by 30%.

The super spot beam ensures 30% further distance irradiation. Strobe mode and SOS rescue mode are well functioned.

Product Highlights

- Exclusive automotive grade optics
- Scaly armored reflector design
- High-brightness LUMINUS LED
- Aviation aluminum housing
- High beam distance:1027M
- Spot beam with wide angle

Application Areas

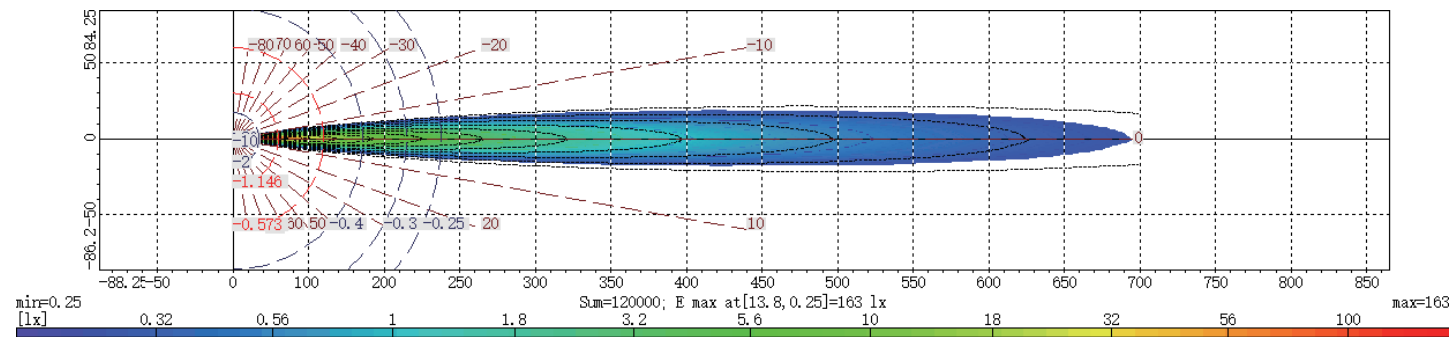
This flashlight can be used for flashaholics, rescue search, night maintenance, home power outage, fishing, night patrol, hiking, night hunting and outdoor adventure.



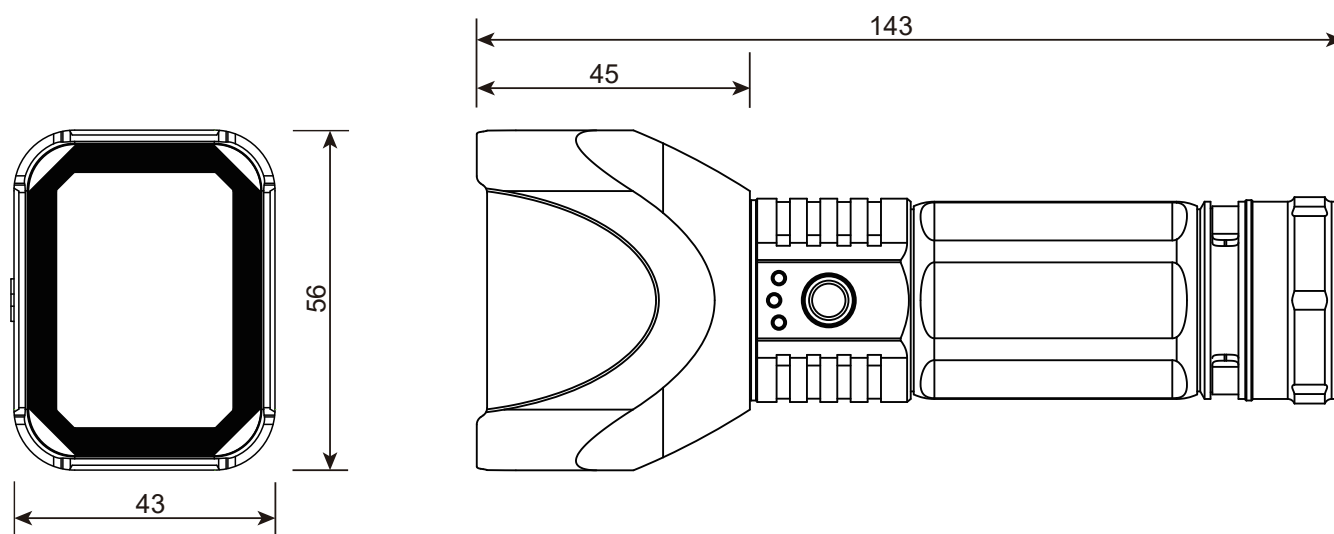
BLFL003



Aerial View

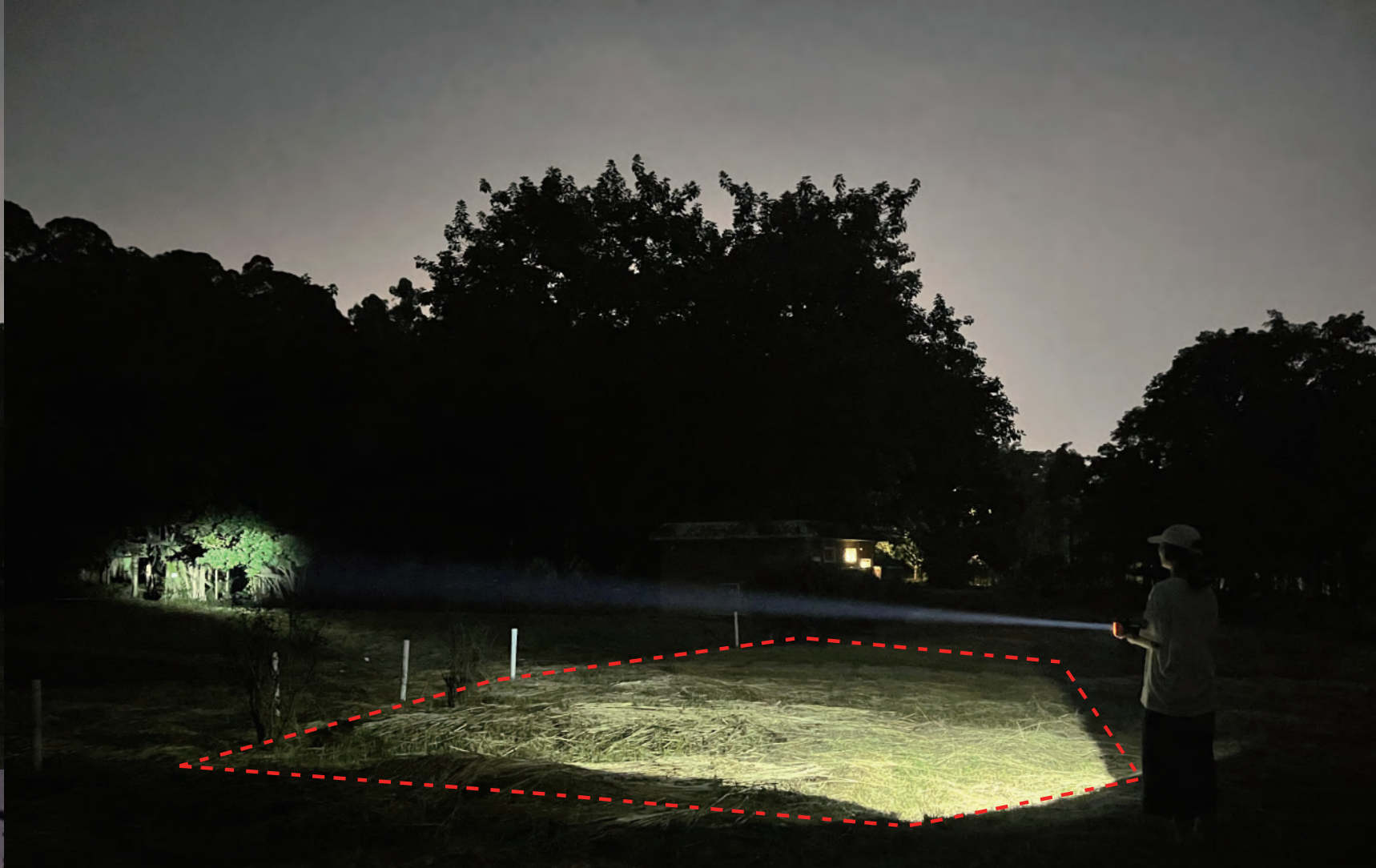


Dimensional Drawing



Technical Data Sheet

Model	BLFL003
Watt(W)	17W
Luminous(lm)	35lm~1580lm
Intensity (cd)	3100cd/27600cd/62950cd/142500cd
Beam Distance @0.25lux(m)	111m/323m/502m/755m
Light Chip	LUMINUS
CCT(K)	6500K
Beam Angle (°)	4°
Light Color Adjustable Or Not	NO
Dimmable Or Not	YES
Power Bank Function Or Not	NO
Charging Output	5V/2A
Endurance Time(h)	7.5-105h
Charging Input	5V/2A
Charging Time(h)	3-4h
Battery Capacity	5000mAh 3.7V 18.5Wh
Weights(g)	270g
Charging Port	Type-C
IP Rating	IPX5
Anti-fall Height(M)	1M
Product Surface Color	Black
Optics Material	PC
Housing Material	AL6061-T5 Aviation Aluminum
Operating Temp.(°C)	-10℃~45℃
Charging Ambient Temperature(°C)	0-45℃



Product Introduction

LED Flashlight BLFL004

This flashlight with full-black design leads the modern fashion. It is featured with the side reflector optics, improving lighting efficiency by 30%.

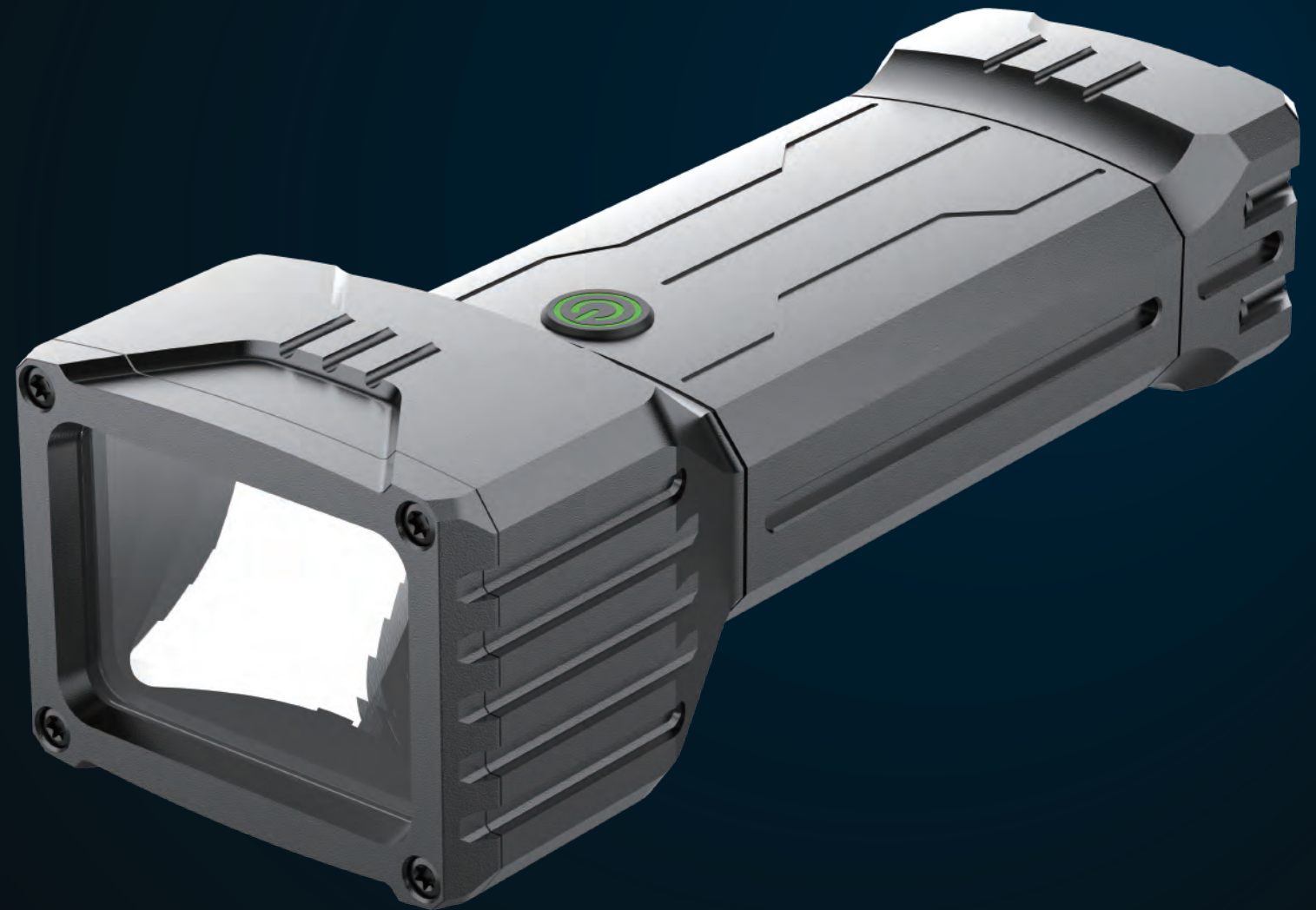
The super spot beam ensures 30% further distance irradiation. Strobe mode and SOS rescue mode are well functioned.

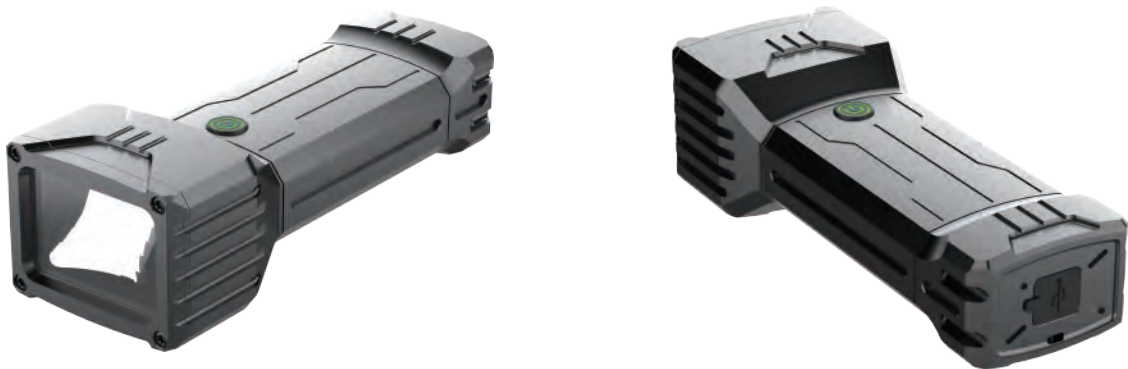
Product Highlights

- Exclusive automotive grade optics
- Scaly armored reflector design
- High-brightness LUMINUS LED
- AL6061-T5 housing
- 6000mAh battery with longer durability
- Spot beam with wide angle

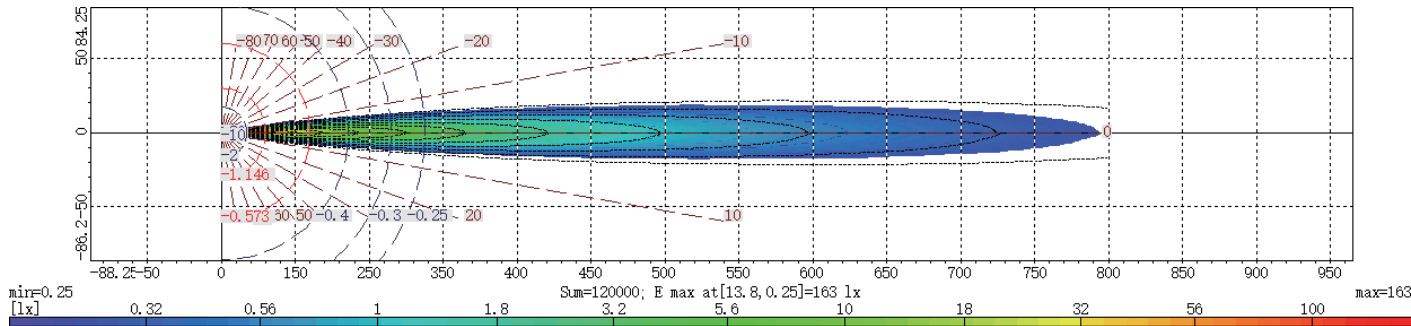
Application Areas

This flashlight can be used for flashaholics, rescue search, night maintenance, home power outage, fishing, night patrol, hiking, night hunting and outdoor adventure.

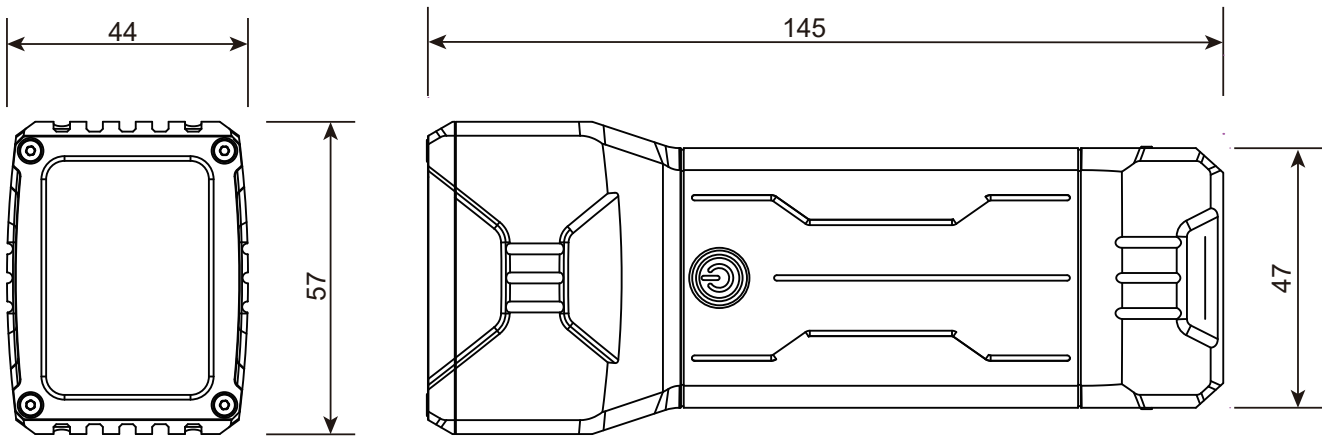




Aerial View



Dimensional Drawing



Technical Data Sheet

Model	BLFL004
Watt(W)	20W
Luminous(lm)	400lm~1690lm
Intensity (cd)	420cd-157500cd
Beam Distance @0.25lux(m)	420m-794m
Light Chip	LUMINUS
CCT(K)	6500K
Beam Angle (°)	4°
Light Color Adjustable Or Not	NO
Dimmable Or Not	YES
Power Bank Function Or Not	NO
Endurance Time(h)	13-128h
Charging Input	5V/2A
Charging Time(h)	3.5-5h
Battery Capacity	6000mAh 3.7V 22.2Wh
Weights(g)	375g
Charging Port	Type-C
IP Rating	IPX6
Anti-fall Height(M)	1M
Product Surface Color	Black
Optics Material	PC
Housing Material	AL6061-T5 Aviation Aluminum
Operating Temp.(°C)	-10℃~45℃
Charging Ambient Temperature(°C)	0-45℃



Product Introduction

LED Headlamp BLHL001

The headlight is available with red and white light with automotive optical technology.

An extral red light on the back of the head is functioned as the warning light, for drawing attention to people behind you.

It can be turned on/off by waving your hands through motion sensor system.

Product Highlights

- Exclusive automotive grade optics
- Scaly armored reflector optical system
- Dual-color high-brightness LED
- Nylon + fiberglass material housing
- Hand movement (motion sensor) to turn on/off
- Red warning light on the back
- IP Rating:IP65

Application Areas

This flashlight can be used for running, rescue search, night maintenance, home power outage, fishing, night patrol, hiking, night hunting and outdoor adventure.

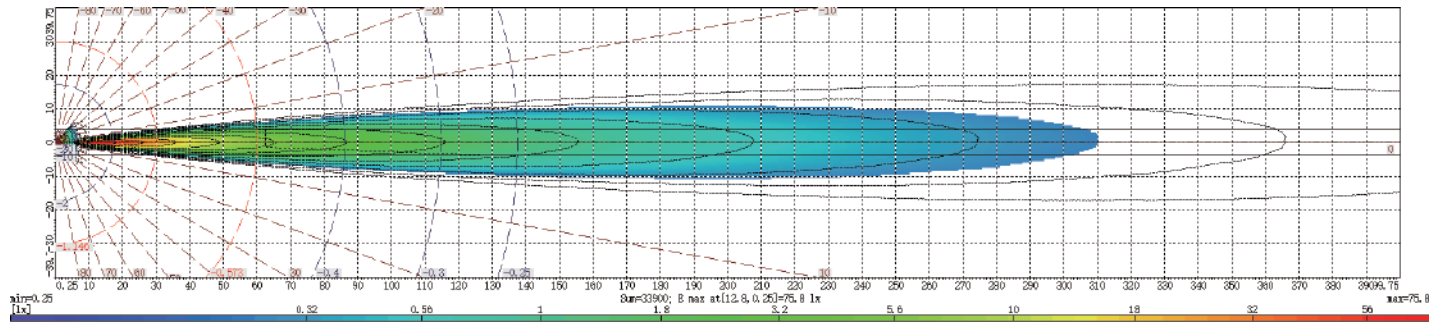


LED Headlamp

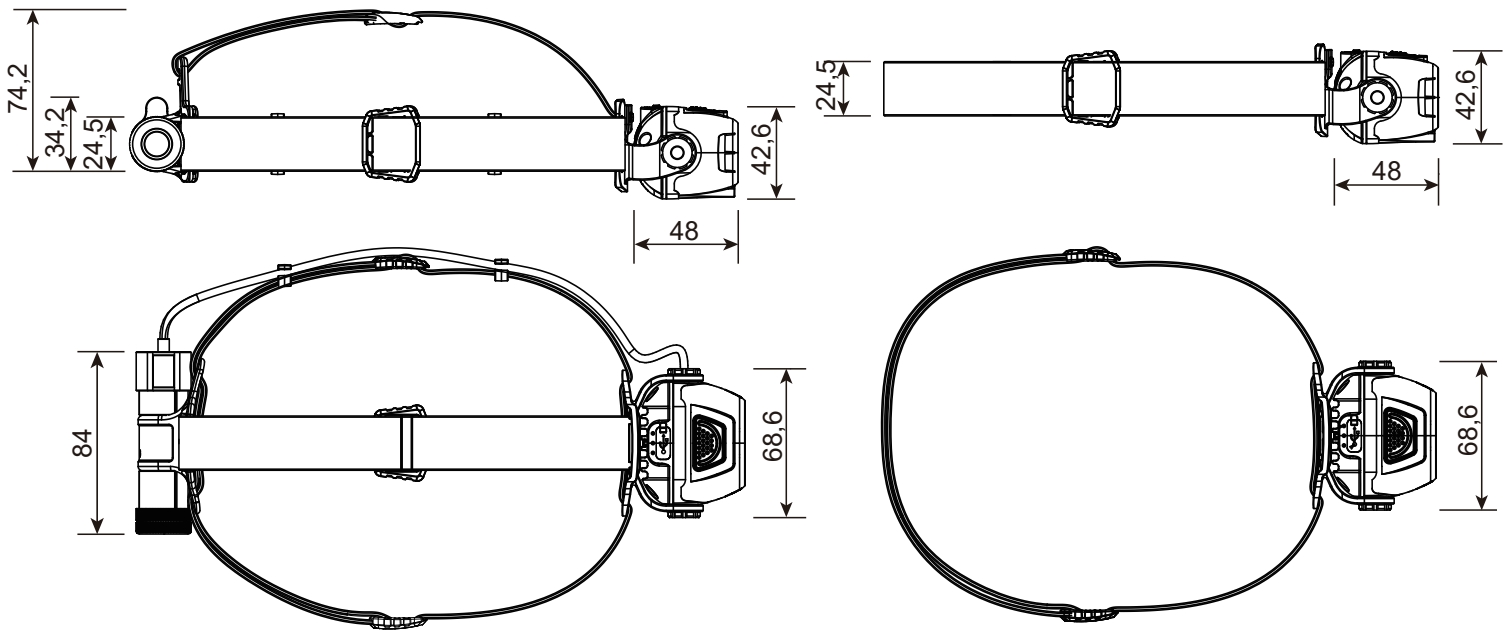
BLHL001 & BLHL001-A



Aerial View



Dimensional Drawing



Technical Data Sheet

Model	BLHL001	BLHL001-A
White light Watt(W)	3.5W	2.5W
Red light Watt(W)	2W	1.5W
White light Luminous(lm)	30-400lm	20-320lm
Red light Luminous(lm)	5-10lm	5-10lm
White light Intensity (cd)	5880cd-24360cd	4200cd-17420cd
White light Beam Distance @0.25lux(m)	153-312m	130-264m
Red light Beam Distance @0.25lux(m)	3-10m	3-10m
LED Chips	Two-color SMD	Two-color SMD
White light CCT(K)	6500K	6500K
White light Beam Angle (°)	10°	10°
Red light Beam Angle (°)	12°	12°
Light Color Adjustable	NO	NO
Dimmable Or Not	YES	YES
Power Bank Function Or Not	NO	NO
Gesture switch Or Not	YES	YES
White light Endurance Time(h)	4.5-28h	2.5-9h
Red light Endurance Time(h)	6.5-32h	3-12h
Charging Input	5V/1A	5V/1A
Charging Time(h)	3-4h	1-2h
Battery Capacity	3000mAh 3.7V 11.1Wh	1000mAh 3.7V 3.7Wh
Weights(g)	214g	105g
IP Rating	IP65	IP65
Charging Port	Type-C	Type-C
Anti-fall Height(M)	Red & Black/Orange & Black/ Yellow & Black	Red & Black/Orange & Black/ Yellow & Black
Light Color	2M	2M
Optics Material	PC	PC
Housing Material	PA66+Fiberglass material	PA66+Fiberglass material
Operating Temp.(°C)	-10℃~45℃	-10℃~45℃
Charging Ambient Temperature(°C)	0-45℃	0-45℃



Product Introduction

LED Worklight
BLWL001

The modular design allows for versatile use: the light can be used individually or combined with two lights and a bracket.

It's easy to carry, and can be intelligently controlled via an app.

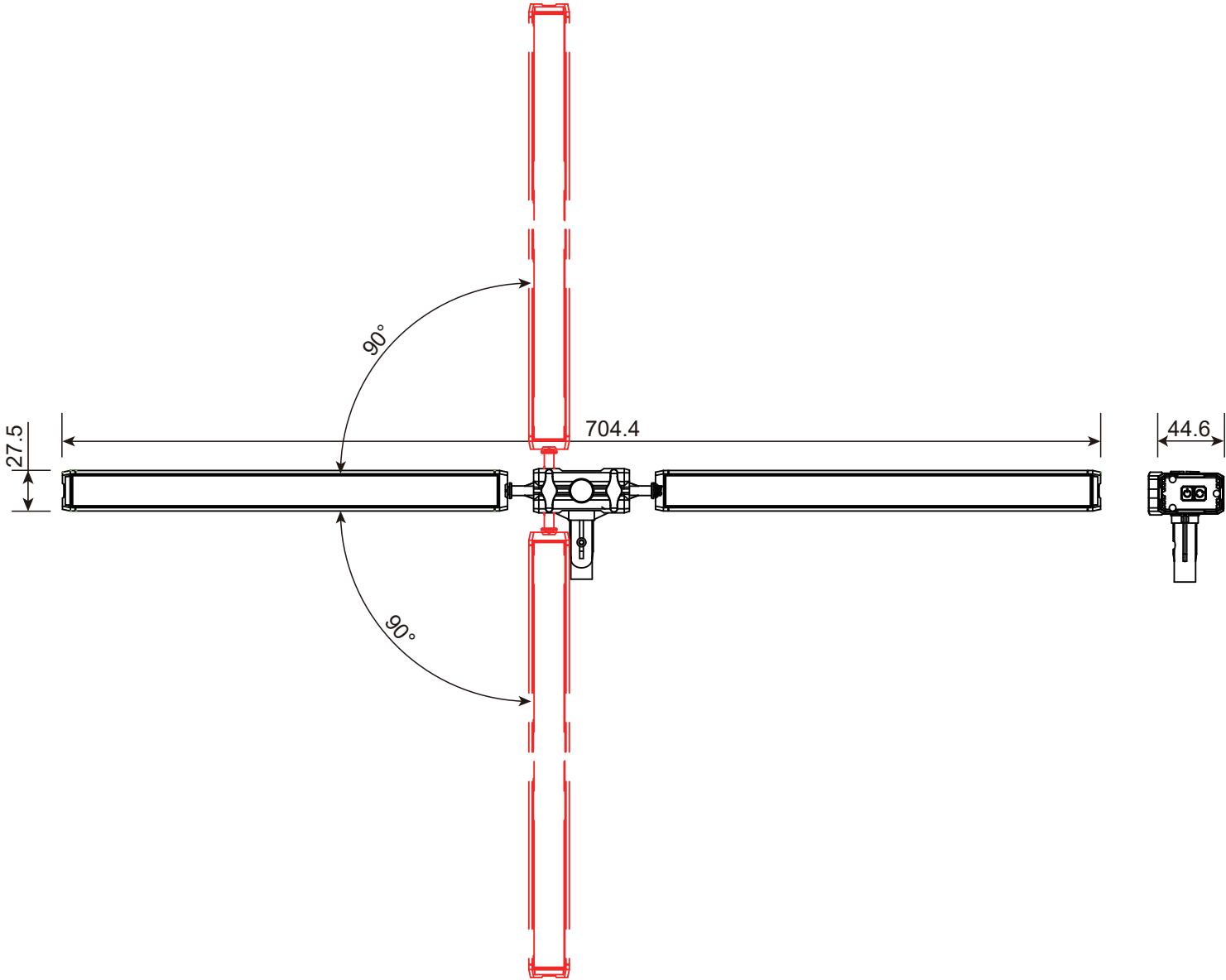
Product Highlights

- The eagle-eye optical system(Light transmittance \geq 95%)
- Brightness adjustment by APP or button
- Multi-Mounting: Individual mounting or 2-in-1 attached
- Magnet adsorption for easy and flexible installation
- Dual-kelvins: 1800K/6500K
- The Hardened lens for better anti-scratch
- Aviation aluminum housing, more durable

Application Areas

This work light can be used in camping as a whole, and the single light can be used as a student desk lamp, home power outage, maintenance and emergency.





Technical Data Sheet

Model	BLWL001
Watt(W)	24W
Warm white Luminous(lm)	180lm~2100m
Cool white Luminous(lm)	130lm~2400m
Light Chip	3535 SMD LED
CCT(K)	1800K/6500K
Beam Angle (°)	60°
Light Color Adjustable Or Not	YES
Dimmable Or Not	YES
Power Bank Function Or Not	NO
Endurance Time(h)	6.5-135h
Charging Input	5V/3A
Charging Time(h)	4-5h
Battery Capacity	15000mAh 3.7V 55.5Wh
Weights(g)	985g
Charging Port	Type-C
IP Rating	IPX5
Anti-fall Height(M)	1.5M
Product Surface Color	Black
Optics Material	PC
Housing Material	AL6061-T5 Aviation Aluminum
Operating Temp.(°C)	-10 C~45 C
Charging Ambient Temperature(°C)	0-45 C