



**MOTUS**<sup>AS</sup>

**444 1 687**

**motus.com.tr**

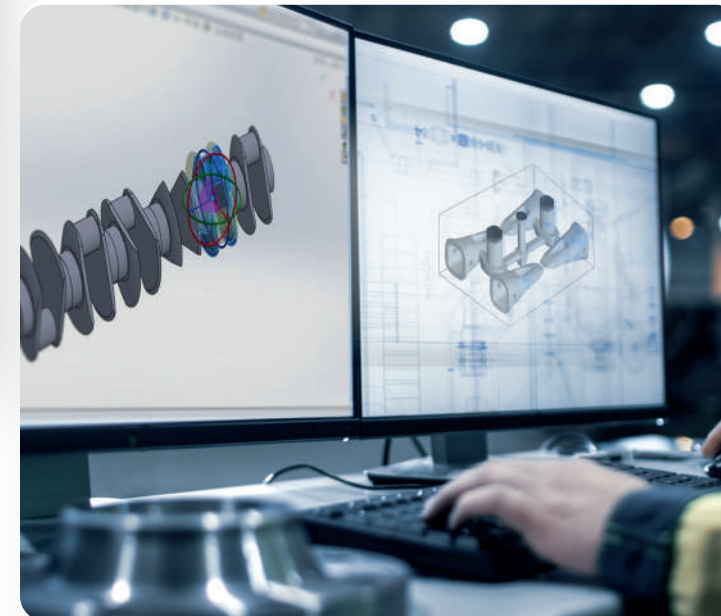
International

+90 (0332)

**239 20 00**



## • HISTORY



- Motus started its activities with a team of 30 people in a 500 m2 production area on **August 1, 2003**.
- **On January 13, 2009**, it moved to its new 20,000 m2 factory. Since 2009, MOTUS, a close follower of innovations and developing technologies, has been producing with the understanding of high performance and shared power.
- Exporting approximately 55% of its production, Motus exports to a total of 60 countries, 15 of which are members of the European Union.
- Motus has managed to become a world brand with its experience from the past to the present and more than 1000 product references.



• CORPORATE



## VISION

Being a “rule-setting” company in its sector on the global scale.

## MISSION

While all stakeholders get the maximum share by uniting at the minimum, our company, which is constantly learning, is able to offer the “produced values” to the service of the sector in the most economical way.



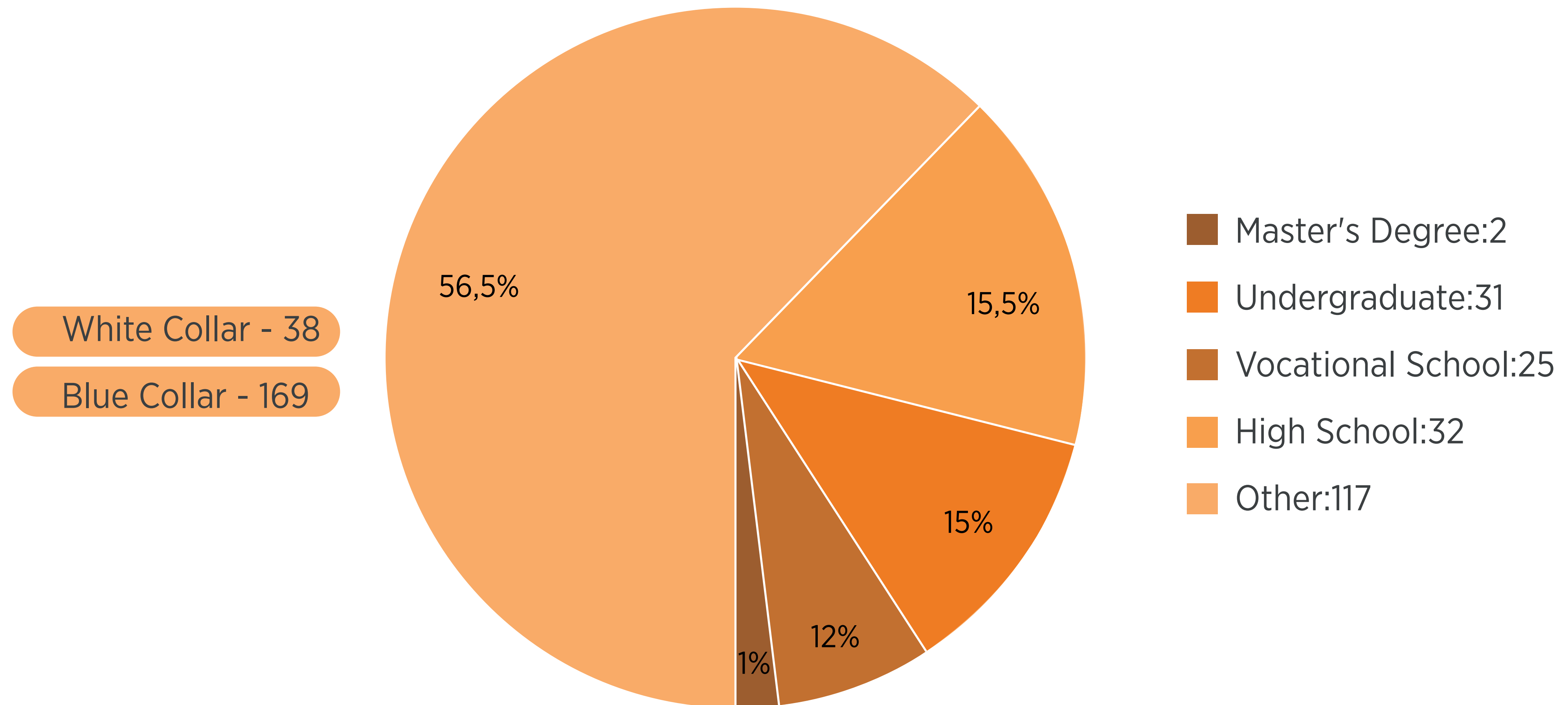
## • OUR VALUES



QUALITY RESPONSIBILITY SATISFACTION  
HONESTY **PROFESSIONALISM** SUSTAINABILITY  
DOMESTIC CAPITAL INNOVATIVISM LEADER  
VENTURE **TRUST** GLOBAL  
DEVELOPMENT



## • HUMAN RESOURCES





- OUR PRODUCTION GROUPS



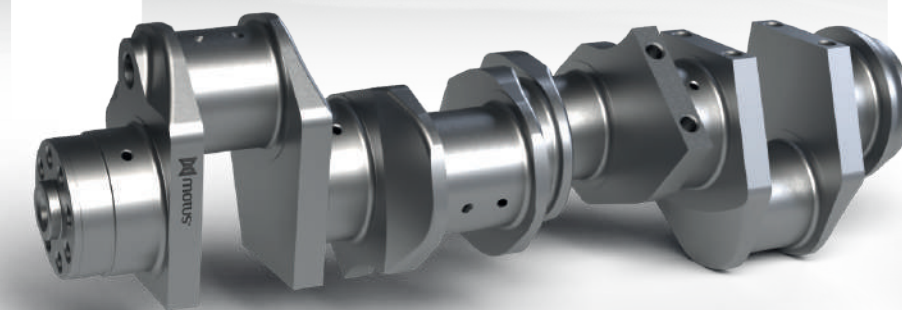
**PASSENGER CARS  
GROUP**



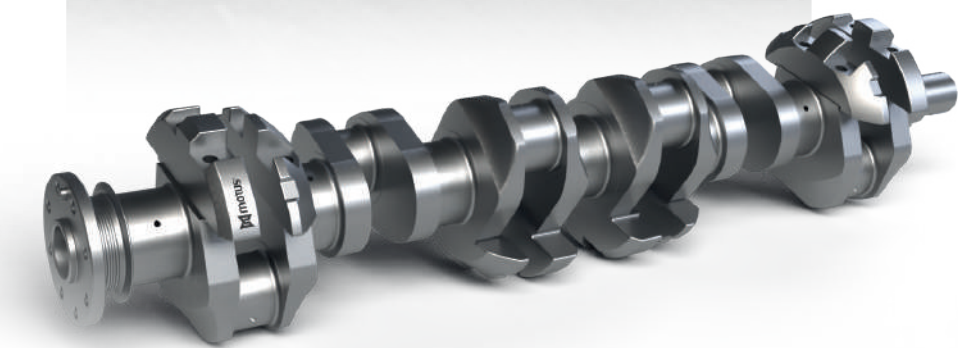
**COMMERCIAL  
VEHICLES  
GROUP**



**TRUCK / BUS  
GROUP**



**CONSTRUCTION  
MACHINES  
GROUP**





- DEFENSE  
INDUSTRY



## > A5-TANK

Motus has taken part in 3 Defense Industry Projects in the last 10 years and assumed important responsibilities.

Producing unique crankshafts for the A-5 Tank has been a great technological achievement for Motus.



- DEFENSE  
INDUSTRY



## BARBAROS FRIGATE

Producing crankshafts for the Barbaros Frigate, one of Turkey's most invested defense industry projects, is the most important indicator of Motus' ability to take responsibility.



- DEFENSE  
INDUSTRY

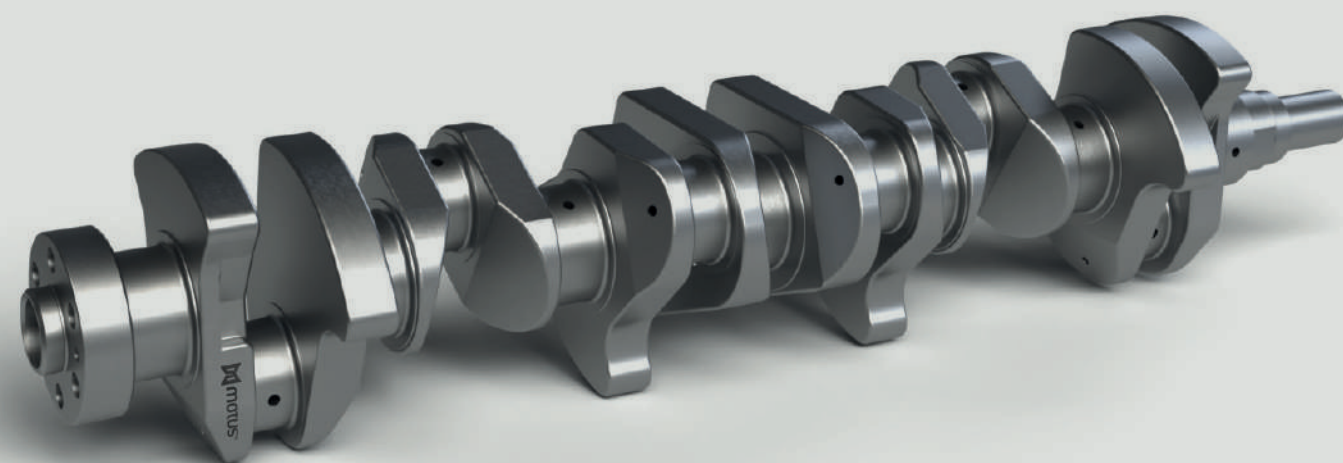


## BAYRAKTAR TB-2

Producing crankshafts for the engines of Bayraktar TB2 has been a separate adventure.

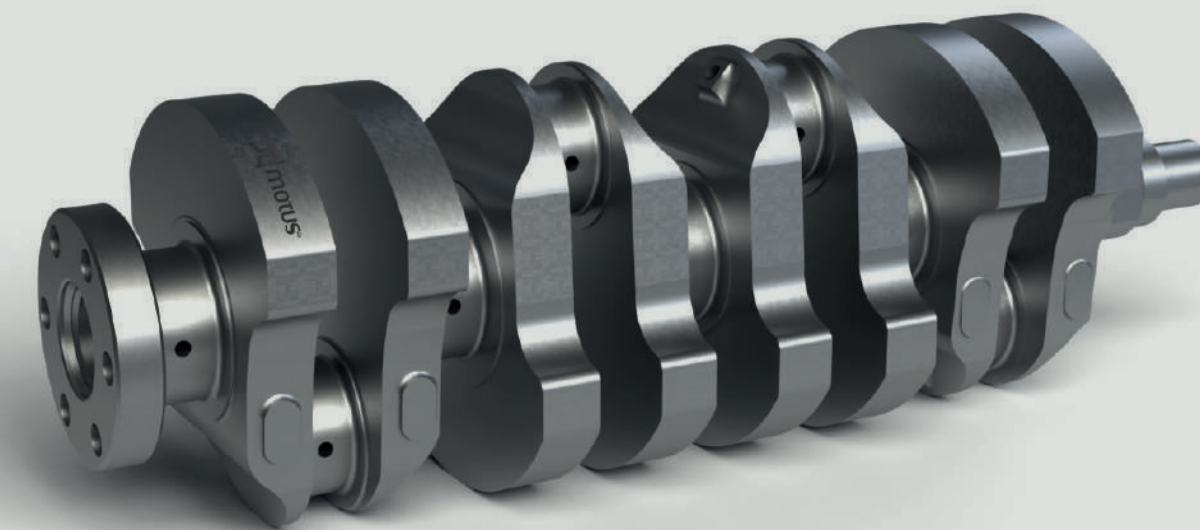


- SPECIAL PRODUCTIONS



### RB-26 Special Crankshaft

MOTUS Tuning has produced a reinforced and high-performance crankshaft for the RB26, known in the tuning world as Godzilla.



### Mazda Mx-5 Performance Crankshaft

At the request of another special customer, MOTUS has also produced a reinforced and high-performance crankshaft for the Mazda MX-5.



# • PRODUCTION PROCESS and TECHNOLOGIES

■ Casting Department



■ Pattern

■ Core

■ Sand Preparation

■ Molding

■ Melting

■ Spectral Analysis

■ Casting

■ Heat treatment

■ Grinding

■ Feeder and Runner  
Cutting-Sandblasting



# • PRODUCTION PROCESS and TECHNOLOGIES

## ■ Machining Department



■ Marking  
■ Turning  
■ Grinding

■ Balancing  
■ Nitration  
■ Polishing

■ Final Quality Control  
■ Packaging



# •QUALITY CONTROL



## SPECTROMETER

Machine that measures the chemical composition of the materials under quality control.



## CUTTING DEVICE

Used for cutting samples during the quality control process.



## BAKELITE DEVICE

Used for grinding and polishing the samples to be quality controlled.



## METAL SURFACE GRINDING and POLISHING DEVICE

Used for polishing the surfaces of metals to be quality controlled.



## VICKERS HARDNESS TESTER

Used to measure the hardness values of the metals to be quality controlled.



# •QUALITY CONTROL



## ROCKWELL / BRINELL HARDNESS TESTER

Used to measure the hardness values of the metals to be quality controlled.



## METAL MICROSCOPE

Used to examine the metallographic structures of the metals to be quality controlled.



## TENSILE TEST MACHINE

It is the device used to measure the strength values of the products in the quality control process.



## CHARPY IMPACT TESTER

Device used to measure the toughness values of products in the quality control process.

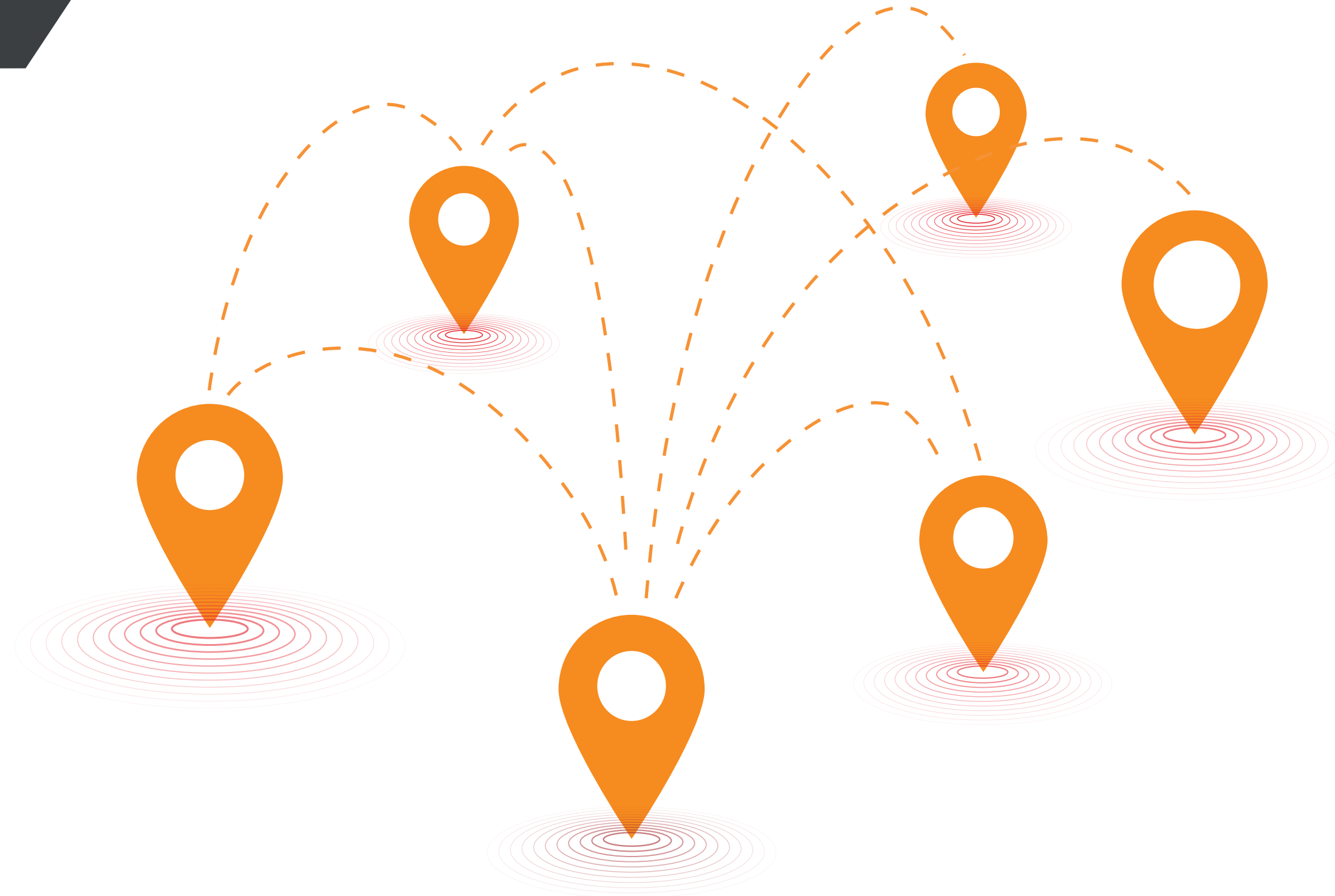


## CMM (Coordinate Measuring Machine)

It is a device that rotates on its own axis and measures with a tolerance of one ten thousandth according to the Cartesian coordinate system. It is used to make measurements such as main bearing, rod bearing and flywheel flange diameters on cranks with completed machining.



## • AFTER SALES SERVICES



### ■ Service Network

Motus provides after-sales service to its customers with regional directorates in **Ankara, Izmir, Konya, Istanbul and Adana.**

In the Direct After Sales Service, both domestic and international services are provided with 8 personnel working within the factory.



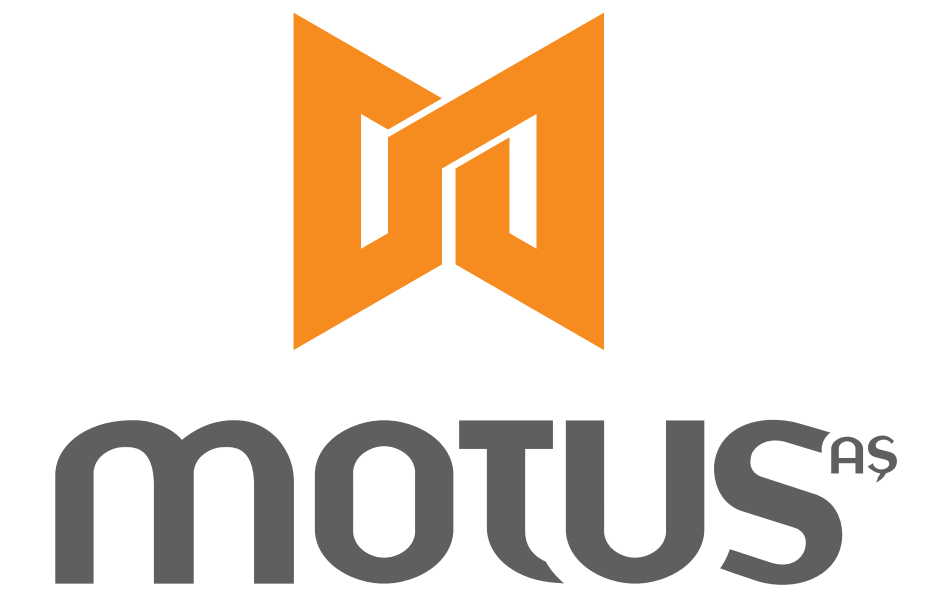
•R&D



- R&D and innovation activities have become the golden key to a strong future. In line with this idea; Motus Otomotiv Makine ve Metalurji San ve Tic A.Ş. was registered as an "R&D Center" by the Republic of Turkey Ministry of Industry and Technology within the scope of Law No. 5746 on "29.12.2017".



•R&D



### **Our Company's R&D Center;**

- Within the scope of our activities, it aims to produce information and carries the principle of systematically carrying the information further by making use of the existing information.
- It has adopted "innovation" with an innovative perspective.
- Our perspective on technology is to advance the existing and to be the pioneer of a new technology.
- In its works; It aims to obtain products in accordance with minimum energy consumption, maximum efficiency and high quality standards.
- While doing all these; we act in an attitude that is sensitive to the environment, respecting people and nature.
- While working on patent rights that will arise as a result of project ideas, it has also adopted the principle of exhibiting behavior in accordance with Intellectual Industrial Property Rights.



# • BUSINESS EXCELLENCE

## Quality Certificates



1230-1

27001

ISO 9001:2015

TS-EN-ISO 50001

TS ISO 45001

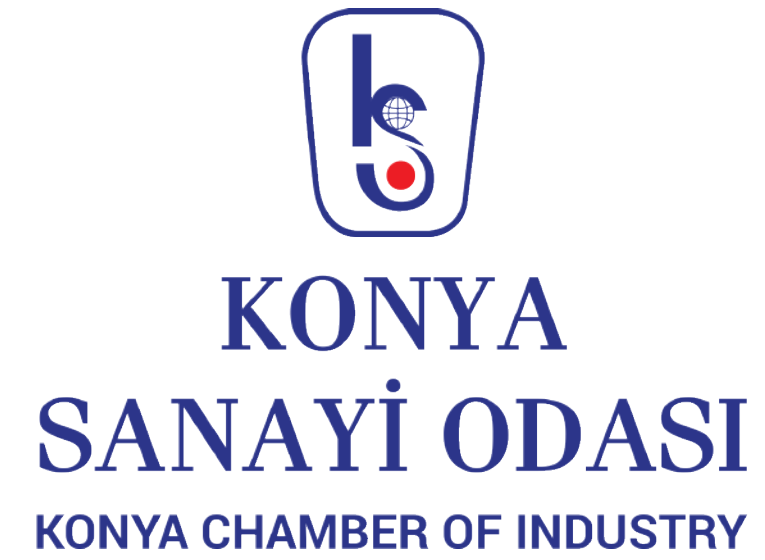
Ministry of National Defence

Certificate Of Carbon Footprint

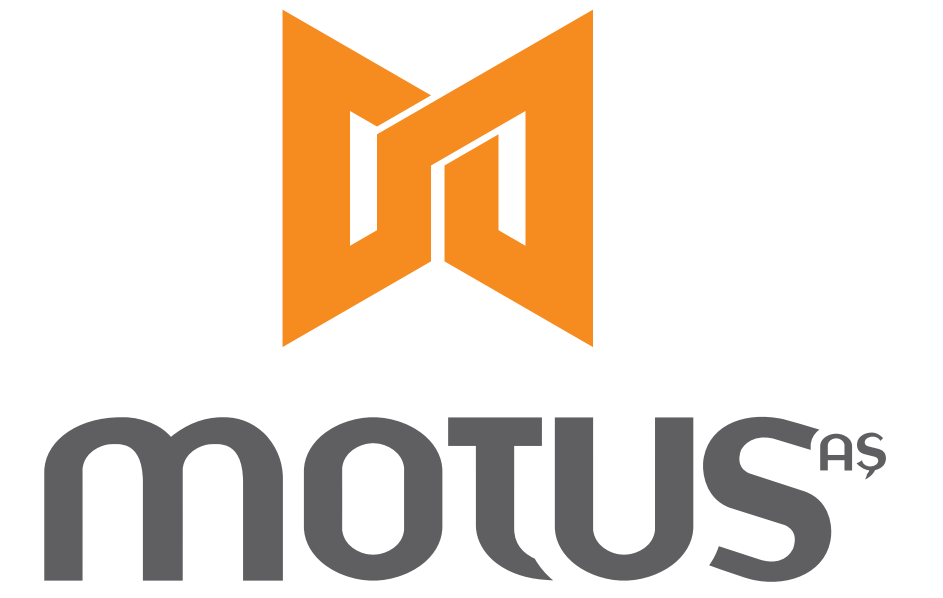


## • STRATEGIC PARTNERS

Member Organizations



İMDER





## • REFERENCES

**aselsan**

**HİDROMEK®**

**HASEL**

**Koç**

**TOFAŞ**

**TürkTraktör**

**SCHWING®**

**MST**

**yapi  
merkezi**

**ANADOLU ISUZU**

**IPSA** Autoteile  
Großhandelsges. mbH

**Limak**

**Ford**

**MOTUS<sup>AS</sup>**





**MOTUS**<sup>AS</sup>

**444 1 687**

**motus.com.tr**

International  
+90 (0332)

**239 20 00**



/motus\_company

info@motuscompany.com