

**GOOD, BETTER, BEST,  
NEVER LET IT REST!**



# COMPANY PROFILE

Qingdao Runbell Co., Ltd was established in 2002, one year after China's joining WTO, aiming at presenting China-Made products worldwide. After 2 decades' development, now we have become a group company with R&D, production & sales. We are now focusing on rubber and plastic parts for: auto repair and accessory, warehouse equipment, road safety. Our main products are wheel chocks, trailer bumpers, dock bumpers, service carts, car ramps, level blocks & level ramps, RV accessory, auto repair tools and accessories etc.

We put R&D in the first position. Till now we have more than 50 patents on different aspect. Innovative items and excellent quality also get our business booming. Now we established long term business relationship with most major hardware distributor and chain stores in North American, Japan, Australia etc.

Now we have two production base covering a land of more than 40K square meters. We produce more than 150 types of wheel chocks, covering almost all type of vehicles. Car Ramp series, Service Carts series, and Caravan accessory series also have very good sales in North America and Australian market.



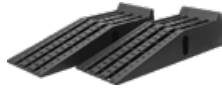
Patent



Factory

# INDEX

CAR RAMPS  
P1



STEP RAMP  
P5



RV ACCESSORIES  
P7



AUTO, SHOP & GARAGE  
P15



DETAILING TOOLS  
P19



DOLLY, CART, WAGON  
P23



SHELVING  
P29



WHEEL CHOCK  
P30



AIRCRAFT WHEEL CHOCK  
P43



MOLDED DOCK BUMPER  
P45



D DOCK BUMPER  
P47



CONE STABILIZER/BALLAST  
P48



MUD FLAP  
P48



LAMINATED DOCK BUMPER  
P49



JACK PAD  
P51



TIE DOWN STRAP  
P53



PET PRODUCTS  
P55



CUSTOM RUBBER PARTS  
P57



RACK PROTECTOR  
P57



CABLE PROTECTOR  
P57



CARTON CORNER PROTECTOR  
P57



SAFETY GUARD  
P58



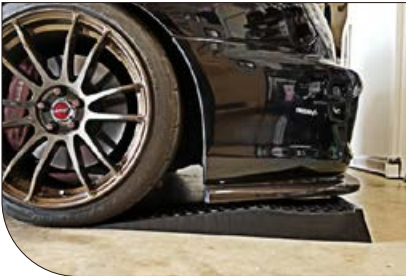
MOTORCYCLE WHEEL CHOCK  
P59



FLOOR TILES  
P61



# CAR RAMPS



TS260BAG  
FOR ITEM TS260/TS260DT



AS NZS2640-2016 certified

## TS260—Low Rise Car Ramp

Size(LxWxH)	Lift height	G.V.W.
700×200×80mm	65mm	20000 lbs

- High-impact plastic, rust proof and durable.
- Provide 2.5"lift for easy jack access.
- 9 degree incline for most low profile car access.

## TS260DT—Detachable Low Rise Car Ramp

Size(LxWxH)	Lift height	G.V.W.
707×200×90mm	67mm	20000 lbs

- High-impact plastic, rust proof and durable.
- Detachable incline for easy jacking.
- Provide 2.5"lift for easy jack access.
- 9 degree incline for most low profile car access.
- Rubber pad in bottom for max grip.



### TS265 --- Low Profile Car Ramp

Size(L×W×H)	Lift height	G.V.W.
445x250x80mm	65mm	20000 lbs

- Shortened design for easy jacking.
- Wider width ideal for racing cars with max tire width 10".
- Curved cradle platform to keep the wheels in position.
- 17 degree incline.



### TS266 --- Mid-Size Car Ramp

Size(L×W×H)	Lift height	G.V.W.
662x250x150mm	106mm	20000 lbs

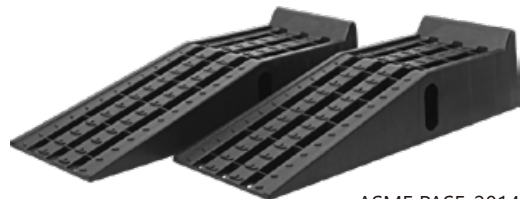
- Heavy duty honeycombed channel design.
- Curved cradle platform to keep the wheels in position.
- Rubber pads in bottom for max grip.
- 17 degree incline.



### TS270---Mid-Size Car Ramp

Size(L×W×H)	Lift height	G.V.W.
809x205x125mm	106mm	9000 lbs

- High-impact plastic, rust proof and durable.
- Provide reliable and easy access to the underside of your vehicle.
- 13 degree incline.
- Rubber pad in bottom for max grip.

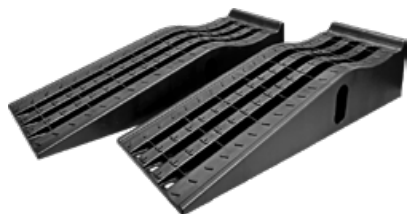


ASME PASE-2014 certified

### TS295---Maintenance Car Ramp

Size(LxWxH)	Lift height	G.V.W.
905x305x216mm	170mm	13000lbs

- Corrosion resistant, high-impact plastic.
- Non-skid tread pattern design increases traction and reduces shifting.
- Great for cars, pickups, SUVs and vans use.
- 17 degree incline.
- Rubber pad in bottom for max grip.

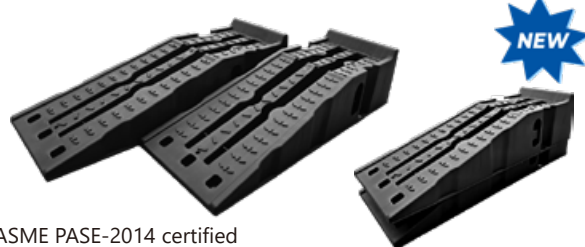


ASME PASE-2014/AS NZS2640-2016 certified

### TS295AU---Plastic Car Ramp

Size(LxWxH)	Lift height	G.V.W.
905x305x205mm	155mm	13000lbs

- High-impact plastic
- Curve cradle platform to keep the wheels in position.
- Grid design, allows snow, water and dirt to easily flow through no matter the weather conditions.
- 6 rubber pads in bottom for max grip.
- 17 degree incline.



ASME PASE-2014 certified

### TS296---Stackable Car Ramp

Size(LxWxH)	Lift height	G.V.W.
905x305x216mm	170mm	16000 lbs

- Stackable design, space-saving.
- Corrosion resistant, high-impact plastic.
- Non-skid tread pattern design increases traction and reduces shifting.
- Great for car, pickup, SUV and van.
- 17 degree incline.


**TS297--13" W Stackable Car Ramp**

- Stackable design, space-saving.
- Wider width ideal for vehicles with max tire width 13".
- Curve cradle platform to keep the wheels in position.
- 17 degree incline.

Size(LxWxH)	Lift height	G.V.W.
905x330x216mm	155mm	16000 lbs


**TS295DT--Detachable Poly Car Ramp Pair**

- Curve cradle platform keep front wheel in position.
- 9.5 degree incline suitable for most cars including racing cars.
- Detachable incline for bigger working space, or adding extra jack for extra safety.
- High impact plastic, with 6 rubber pads each section for max grip.

Size(LxWxH)	Lift height	G.V.W.
1300x380x210mm	160mm	13000 lbs


**TS295PT--15ft Poly Car Lift Ramp Set**

- High impact plastic, light weight, each piece is portable and interlocking.
- Curve cradle at rear part to keep wheel in position.
- 6 rubber pads in each section for max grip.
- 9.5 degree incline suitable for most cars including racing cars.

Size(LxWxH)	Lift height	G.V.W.
4610x380x210mm	178mm	13000 lbs


**TS290--Truck Ramp**

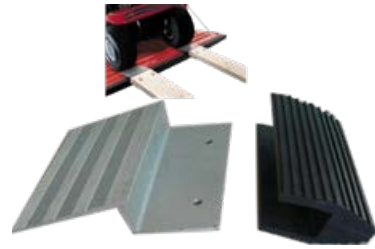
- Bring convenience when unloading from the truck or repairing the car.
- For household and outdoor use.
- 10 degree incline.

Size(LxWxH)	Lift height	Capacity
1280x290x220mm	170mm	10T/pair



### TS280—Detachable Steel Car Ramp

- Heavy gauge solid steel construction.
- Removable inclines for compact storage in truck, garage, bigger working space under the car.
- Ribbed drive-up surface, slip resistant surface with deep side curbs for easier drive-up.
- G.V.W.: 10,000 lbs. per pair
- 9" wide drive surface - 37.5" length - 7 5/16" lift



### TS208 / TS212—Alu. Ramp Kit

- Super strong, top quality extruded aluminum plate with anti-slip rubber feet.
- Turn ordinary 2 In.x 8 In. or 2 In. x 12 In. boards into sturdy all purpose ramps.
- Installation hardware included.
- No angle cuts is necessary, easy to install and use.
- TS208: 8" TS212: 12"

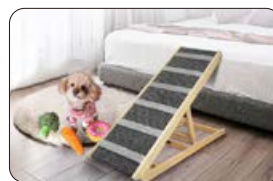


### TS924—Tandem Wheel Change Ramp

Size(LxWxH)		610x216x177mm	
Lift height	132mm	Capacity	5T/pair



- Easily change flat tire on tandem wheel trailer even if you're alone.
- Allows you to keep cargo in trailer while changing tire.
- Simply drive the good tire up onto ramp.
- Provides 5.3" of lift.
- Used by pair as car ramp, for oil changing, maintenance.



### TS313 — Wooden Foldable Pet Ramp

Folded Size(LxWxH)	41.8x30.2x12.5cm
--------------------	------------------

- Collapsible & adjustable, adjusted to 10", 14", 16" and 18" to better suits different uses of furniture and vehicles.
- Including 2 long non-slip pad in the bottom of ramp.
- Easy to climb surface, additional 5 supportive bars ensures your pets not slipping down while climbing.
- With handle, easy to carry.
- Sturdy steel hinge, makes the ramp more sturdy.

### TS314 — Wooden Adjustable Pet Ramp

Folded Size(LxWxH)	70.5x35x6.8cm
--------------------	---------------

- Folding design, easy to store and use.
- Cross grain slope, wear resistance and pressure resistance, good anti-skid effect.
- Adjustable height, height adjustments: 12", 16".
- Designed with self-supporting feet, no need to lean on a bed or sofa.


**TS310—Pet Stair Ramp**

Size(LxWxH)	Weight	Max capacity
79.5x40x41cm	2.28kg	30kg

- Light weight and durable;
- Folding type for easy storage;
- Comfort access to 16" height, ideal for sofa, bed.


**TS315— Folding Pet Stair Ramp**

Open size(LxW)	Weight	Max capacity
163x39.5cm	5.2kg	68kg

- Folding type for easy storage.
- Turnable design, comfort access to 14"-29.5"(35.5-75cm), fit for most vehicle height.
- Stairs design with high traction surface.
- Sturdy, durable, stable.

**Retractable Aluminum Pet Ramps**


TS316 (3 sections)

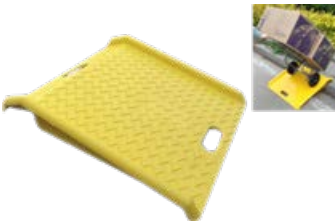


TS316-4(4 sections)



Model	Folded Size (LxWxH)	Open Size (LxWxH)	Weight	Max capacity
TS316	70.3x42.5x10.5cm	157.5x42.5x8.5cm	5.2 kg	90 kg
TS316-4	73x42.5x13.9cm	204.6x42.5x8.5cm	6.9 kg	90 kg

- Made of high quality aluminum and plastic, lightweight.
- Textured surface with bone-shaped rubber pads for better grip.
- Telescopic pet ramps, easy to store in your vehicle.
- Large rubber feet for stability.


**TS690—Portable Plastic Curb Ramp**

Size(LxWxH)	Max capacity
685x680x120mm	1000lbs

For use with hand trucks or wheeled carts, provides a safe and ergonomically correct method to move heavy loads over curbs or up steps with ease.

**STEP RAMP**


CR200



CR200L



CP270



RSR02



RSR06



RSR09





Model	Material	L(mm)	W(mm)	H(mm)	W(kg)
CR200	RUBBER	200	200	45	0.92
CR250	RUBBER	260	260	95	2.7
CR200L	RUBBER	200	200	45	1
CR250L	RUBBER	260	260	95	2.77
CP270	PP	280	280	100	0.75
RSR02	RUBBER	600	200	45	3.72
RSR03	RUBBER	600	256	95	8.37
RSR04	RUBBER	900	250	95	12
RSR05	RUBBER	900	200	45	6
RSR06	PP	600	270	100	1.82
RSR07	PP	600	340	150	3.4
RSR08	PP	960	275	100	3
RSR09	RUBBER	600	200	45	4.2
RSR10	RUBBER	590	260	90	6.86
RSR11	RUBBER	910	258	95	12.77
RSR20	PP	515	320	100	1.73
RSR123	PP	462	405	75	1.8
RSR1CM	TPR	443	60	10	0.14



**RSR20 --- Interlocking Step Ramp**

Size(LxWxH)	Weight	Material
515x320x100mm	1.73kg	Plastic

- Bolt fixing, it can be secured to the ground with both concrete or tarmac fixings.
- Portable design.
- Interlock design, each piece can be connected together easily.
- With rubber pad in bottom for max grip.



1 Pc for 1" threshold



2 Pcs for 2" threshold



3 Pcs for 3" threshold  
Modular design can be flexible disassembly and vertical switching suitable for multiple places



9° slope design makes wheelchair's entry more easier



Anti-slip tread pattern surface

**RSR123 --- Modular Threshold Ramps**

- 3 pcs pack with 1",2"and 3" rise that makes door access easy.
- With adhesive tape at bottom, peel and stick to ground firmly, easy to install.
- Features built-in cable channels.
- Interlocking design for increasing the length.



Eco-friendly material suitable for indoor use



3000 lbs load capacity hard to deformed

**RV ACCESSORIES**



**TS570** 3 Step Level Ramp HOT

Material	PP	Working Width	200mm
Size (LxWxH)	560x200x130mm	Weight	2.6kg/pair
Remark	3 step level ramp lift H: 4cm, 7cm, 10 cm ASME Certified		

**TS570-C** Level Ramp Chock

Material	PP	Working Width	93mm
Size (LxWxH)	117x93x83mm	Weight	0.35kg/pair
Remark	Fit for TS570 TS440 TS575		



**TS571**

3 Step Cradle Level Ramp



Material	PP	Working Width	215mm
Size (LxWxH)	610x215x120mm	Weight	2.60kg/pair
Remark	3 step cradle level ramp lift H: 4cm, 7cm, 10cm		

**TS575**

Tandem Wheel 3 Step Level Ramp



Material	PP	Working Width	255mm
Size (LxWxH)	560x255x130mm	Weight	3.5 kg/pair
Remark	3 step level ramp lift H 4cm 7cm 10cm		

**TS440**

Level Block



Material	PP	Working Width	195mm
Size (LxWxH)	428x195x87mm	Weight	1.56kg/pair
Remark	For caravans, RV		

**TS570/TS440Bag**

Storage Bag



Material	PE		
Size (LxWxH)	245x635x185mm	Weight	0.26kg
Remark	For TS570 TS570-C TS440 TS575		

**TS490**

Tyre Saver



Material	PP		
Size (LxWxH)	498x215x60mm	Weight	1.16kg/pair
Remark	Prevent flat spots on tyres		

**TS562**

RV Stabilizing Jack Pad



Material	PP		
Size (LxWxH)	220x162x22mm		
Weight	1.04kg/set(4PCS)		

**TS563PR**

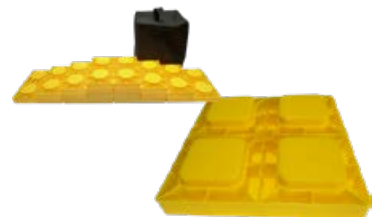
Curved Level Ramp Set, Pair



Material	PP	Weight	3.55kg/set (2 Pack)
Size (LxWxH)	330x152x107mm		
Remark	Storage bag available		

**TS565**

RV Level Block  
10pc pack



Material	PP	Weight	2.93kg/set(10pcs)
Size (LxWxH)	215x215x40mm		
Remark	Storage bag available.		

**TS565N-10**

 RV Level Block  
 (10pc pack)


Material	PP	Weight	3.22 kg/Set
Size (LxWxH)	215x215x40mm		
Remark	With carrying bag, cover also available for increasing the load rating.		


**TS565NP**

 Polyfoam RV Level Block with Cover  
 (6pc pack+cover)


(6pc pack+cover+chock)

Material	PP	Weight	3.54 kg/set (7pcs)
Size (LxWxH)	215x215x50mm		
Remark	Storage bag and interlocking chock # TS565NPC available		

**TS567**

RV Level Block(10pc pack)



Material	PP	Weight	6.54kg/set
Size (LxWxH)	432x216x40mm		
Remark	Cover and storage bag available		

**TS573/TS573C --- RV Level Kit**


Wheel Docks (2pcs)

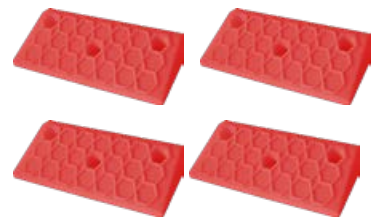


Weight: 0.18kg Size: 16.7cmx14cmx4cm

Extra Wheel Chock (1pc)

 Weight: 0.2kg  
 Size: 21x15.2x12cm


Ramp (4 pcs)



Weight: 0.15kg Size: 18.4cmx7.5cmx4cm



non-slip mat

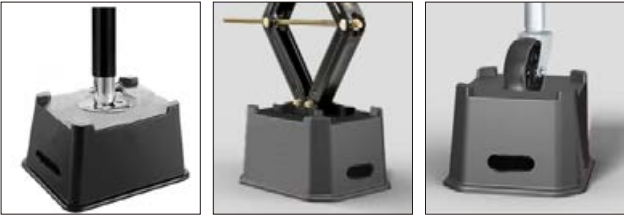
- Including 4 ramps, 2 wheel docks, 1pc non-slip mat, wooden board is not included.
- TS573C: TS573 with an extra wheel chock.
- Ramps(4 pcs) : helps tire roll up onto leveling boards and secures boards into place.
- Wheel docks (2 pcs): stops tire on top board and secures tire from rolling out of position.
- An extra wheel chock (TS573C): works for added security to prevent the tires from rolling.
- Each part has holes in it that can be fixed to the board.
- Combines wood and reinforced plastic to create a solid structure to keep the RV level.



### TS574—Trailer Jack Block

Size(LxWxH)	285x226x160mm
Weight	2.7kg

- Supports nearly any tongue jack foot, wheel jacks, 9" round 5th wheels hydraulic jack foot or scissor stabilizer and more.
- Designed with easy carry handle, easy to move and stack, space saving
- Feature a recessed post hole that helps prevent post jacks from slipping.
- With upgraded internal structure for more bearing weight.
- Larger bottom edge ensure large load bearing area, keep the foot secure and stable, no worrying about sinking in softer ground.



### TS564—RV Wheel Check Stabilizer



Size(LxWxH)	480x302x112mm
Weight	5.02kg

#### Upgraded Wheel Check Wider Applications To Most Vehicles



- Be used to eliminate wheel rocking and keep trailer stabilized.
- The length can be adjusted from 18.9" to 29.5".
- Single-Axle & Dual-Axle tires are both suitable.
- Quick set up lock pin with loss-proof wire.
- With 360° spin handle.

**TS568PR—Camper Wheel Stabilizer**


- With high quality chrome plated ratchet wrench for easy and quick installation.
- Used for camping trailer, camper, RV.
- Fits even the tightest of wheel retracting down to 3"1/2 and extends to 12".
- Provides added stabilization and prevents tire shift by applying an opposing force to the two tires.
- Made by high-quality steel.
- Weight: 4kg/Set.


**TS579 — X-Chock Wheel Stabilizer**


- Made of heavy duty steel material, double stable power, no shaking.
- Provides added stabilization and prevents tire shifts.
- Fit wheel distances from 3.5" to 10" on travel trailers, class A motorhome, fifth wheel trailers and more.
- With high quality chrome plated ratchet wrench for easy and quick installation.
- Can be compacted in 1 minute.
- With lock design for added security.



### TS580—Camper Trailer Wheel Stabilizer



- Provides added stabilization and prevents tire shifts.
- Fit wheel distances from 3.5" to 10".
- With adaptive pedal can swivel to conform the exact curve of your tires, creating a better grip on the tires.
- With crank handle driver for easy install and remove the stabilizer if without powder drill.
- With hex socket for easy installation by powder drill .
- With lock design for added security.
- Galvanized coating.

### TS569 — Aluminum RV Stabilizer



### TS572 — Caravan Parking Leg



- Open Size:680x280x530mm
- Closing size:680x280x130mm
- weight:5.14kg

- Adjust the height at any angle, can be folded at 90 degree.
- Stable ratcheting design.
- It can be used with TS206 and TS207 to better improve the stability of RV.
- Gain supportive support of the tire and play a stable role in bottom of the RV.
- Heavy duty construction, rust resistant.

- Great for supporting a light RV, trailer and camper, offering additional stabilization.
- Stack jack can be extended from 10" to 17", recommend 15" for max height, prevents jacks being wobbly.
- Just rotate the rod and extend jacks, easy to set up.
- Made of high quality aluminum, water-proof and built to last.
- Weight: 0.78kg/pc

### TS2524/5024/7524/5030— RV Scissors Jack Stand,Pair With Handle



Item	Weight Capacity per Jack	Extended Height
TS2524	2500LBS	24"
TS5024	5000LBS	24"
TS7524	7500LBS	24"
TS5030	5000LBS	30"

**TS206**

Caravan Jack Pad

Material	PP
Size(LxWxH)	180x140x50
Weight	0.96kg/set (4PCS)


**TS207**

Jack Pad Stacker

Material	PP
Size(LxWxH)	150x150x40
Weight	0.64kg/set(4PCS)


**TS209**

Interlocking Tandem Wheel Chock

Material	PP
Size (LxWxH)	455x210x120
Weight	1.5kg
Remark	Interlocking design for tandem wheel, rubber pad in bottom


**TS008**

Plastic Wheel Chock

Size (LxWxH)	180x80x100
Working Width	80mm
Weight	0.32kg


**TS193**

Plastic Wheel Chock with Holder

Material	PP
Size (LxWxH)	252x97x113
Working Width	97mm
Weight	0.28kg


**TS201**

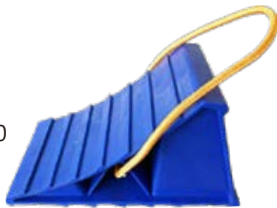
Plastic Wheel Chock

Material	PP
Size (LxWxH)	210x120x110
Working Width	120mm
Weight	0.34kg


**TS201R**

Plastic Wheel Chock

Material	PP
Size (LxWxH)	210x120x110
Working Width	120mm
Weight	0.34kg


**TS202**

Plastic Wheel Chock

Material	PP
Size (LxWxH)	210x152x120
Working Width	152mm
Weight	0.2kg


**TS204R**

Rubber Jockey Wheel Chock

Size(LxWxH)	170x130x45
Weight	0.50kg
Remark	for 6"castor


**TS204R-8**

Rubber Jockey Wheel Chock

Size(LxWxH)	200x130x45
Weight	0.56kg
Remark	for 8"-10"castor







**TS204**

Jockey Wheel Chock



Size (LxWxH)	204x204x35mm	Weight	0.22kg
--------------	--------------	--------	--------

**TS454**

RV Step Rug



4 SPRINGS, 12HOLES

Size	45x40CM	Weight	0.12kg
------	---------	--------	--------

**TS479**

Steel Folding Step Stool



Material	Steel	Height	7.25"/185mm
Table Size	15"X10.25" (380X260mm)	Weight	1.68kg

**TS480**

Super-stable extra wide step stool

Alu. Step Stool



Material	Alu	Height	200mm
Table Size	480x337mm	Weight	3.13kg

- Folds to 76mm for easy storage
- Single step stool has non-slip feet and platform.

**TS319**

4Kg Gas Tank Holder



Weight	2.05kg	Size (LxWxH)	320x280x183mm
Remark	For gas tank with OD 254mm		

9Kg Gas Tank Holder

**TS320**



Weight	2.61kg	Size (LxWxH)	384x345x250mm
Remark	For gas tank with OD 317mm		

**TS321**

Jerry Can Holder



Weight	1.9kg	Size (LxWxH)	380x200x300mm
Remark	For 20L jerry can or below		

- Come with drilled holes so you can attach this can to your vehicle or wall for on the go use.

**TS323**

Dual Propane Tank Rack

For both 20lbs and 30lbs tank



Weight	3.4kg	Size (LxWxH)	60x22x59.5cm
Remark	For both 20lbs and 30lbs tank		

- This tank mounting rack securely holds two 20 or 30 pounds propane tanks.
- Included bottom tray, vertical bar, securing LP wing nut, and connecting bar. UV and rust-resistant.
- Made of powder-coated steel construction.

# AUTO,SHOP & GARAGE



## TC2112—Super Grip Flexible Tool Tray Set

TC2112	S:285x137x27mm;M:285x202x27mm; L:543x300x27mm
TC2112KIT	S:285x137x27mm;M:285x202x27mm; L:543x300x27mm Bowl: 4 inch
TC2112WOL	S:285x137x27mm;M:285x202x27mm; Bowl: 4 inch

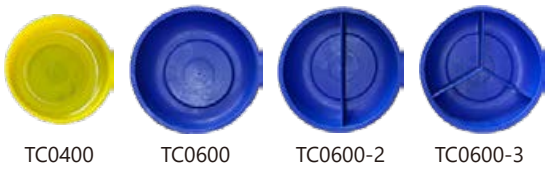
- Non-slip flexible tool tray for organizing and storing your tools. Never worry about scratches to paint and finishes.
- 21.5" & 11.25" trays include Inch & Metric measurement marks for on-the-fly measurements.
- All trays in this set can withstand extreme heat up to 248°F/120°C without melting or damage.
- 4" magnetic rubber bowl also available.

## TC1319—Spill Free Funnel Kit

Size	19cm x 17cm x 13cm ;1400ML
------	----------------------------



- Consist of 4 cap adapters, 5 filler neck adapters, 3 extensions, a stopper and a high quality transparent coolant funnel kit.
- This spill free funnel is ideal for an engine flush, a coolant pressure tester kit, even for a radiator flush.
- Removable lid for extra safety .
- Easy to open and close lid.
- Handle design makes it easier to use.
- Clear scale helps you see the volume of the liquid.



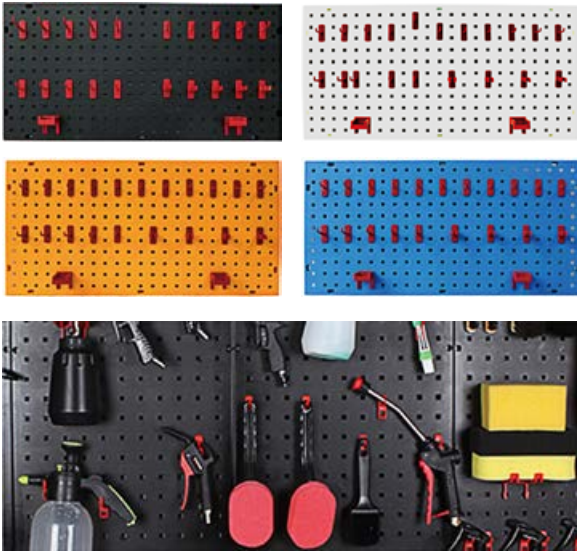
### TC0400/TC0600—Magnetic Rubber Bowl

Dia. : 4" and 6"

### TC0445—Folding Magnetic Rubber Bowl

Open size: 11.7x11.7x4.8cm    Folding size: 12x12x3cm

- The magnetic foldable tray features a base with strong magnets, fixing metal parts and tools inside it and meanwhile keeping magnet tray attached to your metal workpiece.



**THB1836—Multifunctional Tool Hanging Board**

Material	Plastic
Size	900x450mm
Color	yellow, blue, black, white

- Multi-functional hook design makes storage easier
- Including 1 board + 11 small hooks + 5 big hooks + 4 opening clips + 2 wire/cord hooks
- Premium quality.
- Easy installation.



**TC7530—Wall Mounted Storage Bins**

Material	plastic
Overall dimensions	25.25"x14.875"x7.125"
18 small bins	3.875"x3.625"x2"
12 big bins	4"x6.375"x2.875"

- Sturdy plastic construction, bins are waterproof and can be stacked.
- 18 small bins+12 big bins.
- Adjustable and removable bins for easy organization of parts and tools.



**TC7524—Plastic Storage Bins**

- Steel construction rack unit.
- 3 shelves 10 5/8" deep x 31 1/8" long.
- 24 plastic bins that measure 11" long x 3 1/2" wide.
- Black powder-coated finish.
- Great for use on a workbench.



**TC7515—Plastic Storage Bins**

Bin dimensions	6.375 x 4.125 x 3 inches
Overall dimensions	7 x 21 x 15.875 inches

- Durable plastic bins.
- Sturdy metal frame.
- 15 stackable bins.



**TS501/TS501-150—Recovery Track / Snow Track**

Material	TPR	Weight	2.2/2.4/3.0/4.5 kg
Size	60/80/100/150 x 21.5 x 2.2 cm		

- Engineered for maximum traction in sand, mud and snow.
- Galvanized steel cables and fittings.
- Used for cars weighing up to 5 Tons.


**TS502—Sand Track**

Size	55x17.5 x1cm	Weight	1.0 kg
------	--------------	--------	--------

- Helps with vehicles traction when stuck in sand, mud or snow.
- Flexible heavy duty plastic with strong metal hinges.
- Fits under, behind or in front of all car, van and 4x4 tyres.


**TS503—Recovery Board**

Size	107x31x6cm	Load capacity	10 Ton
------	------------	---------------	--------

- Raised tracks help prevent vehicle tires from spinning on snow, ice, mud, or sand.
- The ergonomic handles are designed for easy transporting.
- Ideal for off-road use to help spinning tires get traction in the elements.
- The unique u-shaped surface strengthening design increases the stability of the product, and the pointed design effectively prevents the sideslip when the vehicle is stuck.


**TS445—ATV Winch Mounting Plate**

Size(LxWxH)	150x130x50mm	Weight	0.74kg
-------------	--------------	--------	--------

- A service replacement part.
- ATV Fairlead Mounting Plate.

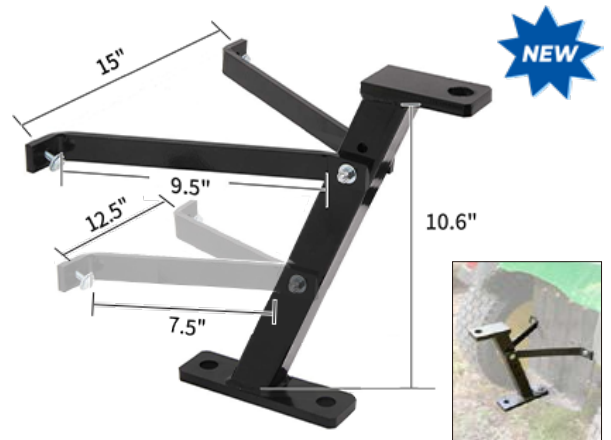

**TS446—Universal Channel Winch Mount**

Size(LxWxH)	920x190x85mm	Weight	10.2kg
-------------	--------------	--------	--------

- Made of strong and sturdy steel.
- Provide a secure platform for mounting most winches.
- Anti-rust black powder coat finish.


**TS535—Spare Wheel Carrier**

- Fits angle iron or tubing structures(up to 3" x5" angle or 4" x5" tubing).
- Fits either 4 or 5 hole rims.
- Tilt and raise design create extra storage space for spare tire.
- Heavy duty steel construction.
- Anti-theft lock design.
- Complete with mounting hardware.


**TS536—Lawnmower Trailer Hitch**

- 2 sets of brackets, and 4 adjustable fixing holes to fit most lawnmowers(some may need to drill fixing holes on the lawnmowers).



### TS554---Garage Parking Stop

Size(LxWxH)	18"x3.5"x1.25"	Weight	0.79kg
-------------	----------------	--------	--------

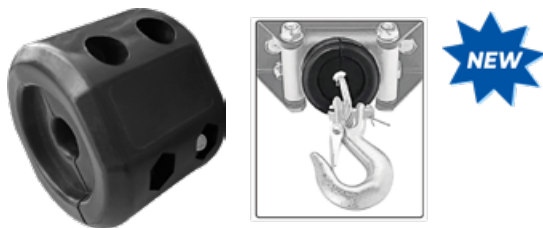
- With Styrofoam on the back, easy to install, peel and stick, no need to be drilled to install.
- Made of environmental protection material with no strong odor.
- With conspicuity yellow safety stripes to improve the visibility.



### TS555---Garage Parking Stop

Size(LxWxH)	18"x3.7"x1.75"	Weight	0.73kg
-------------	----------------	--------	--------

- Height increase to 1.75", can prevent tires from out-running the parking stopper more effectively.
- With Styrofoam on the back, easy to install, peel and stick.
- Made of environmental protection material with no strong odor.
- With conspicuity yellow safety stripes to improve the visibility.



### TS447---Winch Rope Hook Stopper

- Prevent damage to the bumper caused by the hook hitting it during winching operations.
- Durable and long lasting, ensuring that it will not crack or break even under heavy loads or extreme temperatures.
- Can be easily installed, simply slide it onto the cable and fasten the 4 screws with the screwdriver.



### TC0571---Manual Tire Changer

Weight	11.2kg
--------	--------

- Heavy duty steel construction withstands daily abuse.
- Change tires at small cost. There are holes on the base for installation.
- Handles all tires from 8" to 16" light truck (7.5" x 16" and flotation tires up to size 12.5L16).
- Locking collar securely holds the wheel while mounting/dismounting tire. Base has 3 predrilled 1/2" holes for mounting.
- Changes tires on motorcycles which have a center hole of larger than 1-5/8" or a removable center hub .



### TC0572---Truck Bed Unloader

Drag sheet material	polypropylene		
Drag sheet size	455 x128cm	Color	Black

- Quickly unload soil, gravel, logs and more from your truck bed.
- Up to 2000-lb. capacity.
- Easy roller operation with 21in. removable handle pulls loads to rear of truck bed.
- Relieves you of dirty, back-breaking work.

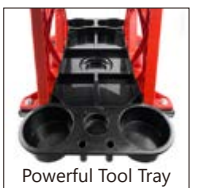
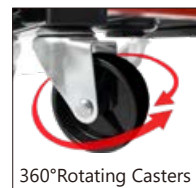


### TC0545---Manual Truck Tire Lever

Weight	13kg
--------	------

- Designed to easily dismount or mount tires.
- Heavy duty forged carbon steel construction.
- Powder coated handle.
- Dacromet coated drag head.

# DETAILING TOOLS



## TC0617--Ergonomic Work Seat

Size	22.9"x13.9"x17"(582x353x431mm)	Load capacity	300lbs
------	--------------------------------	---------------	--------

- With ergonomic seat designed with semicircle concave shape, more comfortable for long time working.
- With four heavy duty 2.5" swiveled castors, 360-degree free rolling (one caster with brake).
- Powerful storage solution, features huge tools pan with 4 bottle/cup/can holders, 4 compartments, screwdriver storage holes and one 4" magnetic bowl holder for easy organization and transport of tools.
- Optimized structure, less parts, easy assembly and smaller carton box; less freight and storage cost.



### TC0550—Bucket Lid Set

Dia	300 mm/11.8"
-----	--------------

- Car wash bucket lid set.
- Lid set design for storage and comfortable seat.
- Fits standard 12" diameter round bucket.
- Easy to install: simply snap on the universal adapter ring then spin the lid for sealing. Easy to open or close.



### TC0549—Bucket Grit Trap

Dia.	10"/250 mm
------	------------

- Separates dirt, mud and grit from your sponges, mitts, towels and other washing accessories.
- Trap dirt at bottom of the wash bucket.
- Fit standard 3-5 gallon buckets.
- With 2 finger holes for easy insertion and removal.



### TC0548—Bucket Dolly

Dia.	51 cm/20"	Load capacity	200LBS
Max bucket base dia	29 cm/11.4"	Weight	2.3kg

- With five 2"(5.1 cm) swiveled casters, provides smooth silent action that protects your floors.
- Designed with side trays for holding spray bottles and cleaning supply cans.



SC2422

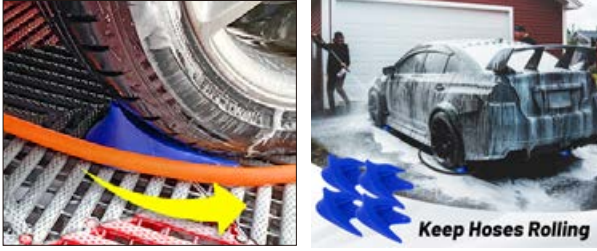


SC2422-3

### Professional Detailing Cart

SC2422: 2-shelf	605x545x530mm
SC2422-3: 3-shelf	605x545x879mm

- Detailing cart can help you sort and place your various tools and quickly pick them up.
- Four swiveled castors, two with lock.
- Easy Installation with Instructions.



TS591

TS590

### Car Wash Line Guider

Size(LxWxH)	17cm x 17cm x 6.5cm
-------------	---------------------

- Keep hose and cords rolling, stuck free.
- Fit any size tires.
- Locking grips to keep it in place.
- Perfect for washing cars, spray paint booths, rotary buffer cords, etc.



### TS485—Folding 2-Step Stool

Unfolded size (LxWxH)	46.5cm x 51.5cm x 57.5cm		
step H	22.5/44.5cm	Weight	3.3kg

- Wash you car with it to reach required height.
- Folded it for storage to save space.
- Non-slip surfaces on steps and foot pads.
- Supports up to 250lbs.



### TS486—Detailing Step Stool

Unfolded size (LxWxH)	660x570x480mm		
step H	36.5/66.5cm	Weight	3.4kg

- 2 step stool with high and low pedals.
- High strength non-slip stripes on the surface.
- Supports up to 180kg.
- Multiple Colors.

### TS705—Mop Holder

Mop Holder with 5 clips.



- Size: 70 x 5cm. Weight: 0.35kg
- Suitable for pole diameter: 3/4"-1" (19mm-25mm).

### TS403—Mop Holder

Mop Holder with 3 clips.



- Size: 40x5cm. Weight: 0.21kg
- Ideal for tools such as mop handles, brooms, brushes, etc.







### TS706--Rubber Grip

- Fixed the clamp with #10 bolt or screw, don't over tighten.
- Put the rod/applications in, push the straps to reach desired tightness and clip it to the jaws.
- Not affected by hot or cold climates.
- UV resistant; made of heavy duty transportation grade rubber.



### TS707--Single Broom Holder

size	80x50x60mm
------	------------

- Suitable for pole diameter: 3/4"-1" (19mm-25mm).
- Uses strong adhesive to hold strongly on the smooth surfaces.
- Stick the grippers on the wall in the laundry room and closet.
- Mop gripper is great for storing your brooms when not in use.



### TS402--X Hook Mop Holder/Garden Tool Rack

Size(LxW)	40x14.7cm	Material	plastic track, steel X hook
-----------	-----------	----------	-----------------------------

- With three X type hooks, easy to install, installation hardware included.
- Interlocking design.
- Super anti-slip, mop or broom will get stuck between the X hook due to the gravity.



### TS401--S Hook Mop Holder/Garden Tool Rack

Size(LxW)	40x12cm	Material	Plastic track, steel S hook
-----------	---------	----------	-----------------------------

- With four S type hook, easy to install, installation hardware included.
- Interlocking design.
- Can be used in both laundry room and garage to hold brooms and mop holders of various sizes.



### TS465--Tire Step

Capacity	500lbs
----------	--------

- Sturdy steel construction, fits most standard car, SUV and 4 x 4 tyres.
- Open and screw locks into position in second.
- Width adjust to fit 8", 9" and 10" tires.
- Height adjustment: 7", 10-1/2" and 14".
- Platform size: 20-1/8" x 7-1/2"



### TC0450--Detailing Tool Organizer

Size(LxWxH)	45 x 12 x 19cm	Material	plastic
-------------	----------------	----------	---------

- With 4 bottle holders for storage spray bottles and cans.
- 1 hanging beam with 2 hooks used for holding detailing spray bottles, mitts or towels.

## DOLLY, CART, WAGON

Four sides interlocking


**TC0501**

Size: 18" x 30"  
 Weight: 5.3kg  
 Load capacity: 450kg


**TC0501L**

Size: 18" x 30"  
 Weight: 4.1kg  
 Load capacity: 450kg


**TC0504-1**

Size: 12" x 18"  
 Weight: 2.6kg  
 Load capacity: 300kg


**TC0504L**

Size: 12" x 18"  
 Weight: 2.6kg  
 Load capacity: 300kg

- Move furniture, appliances, heavy/bulky items and more!
- Perfect option for one person to get the job done.

- Durable non-porous plastic construction avoids splintering.

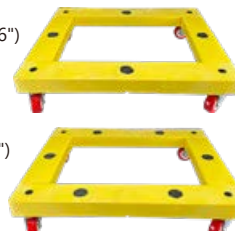

**TC1616—KD Compact Dolly**

Dolly Size	16"x16"	Weight	1.95kg
Load capacity	300 lbs		

- KD style, assemble and disassemble without tools.
- Compact design, easy storage and transport.
- 2" swiveled castors, non-mark, silence.
- Rubber pads for max friction.
- Ideal for moving heavy, or multiple items around.



TC1616E(16"x16")

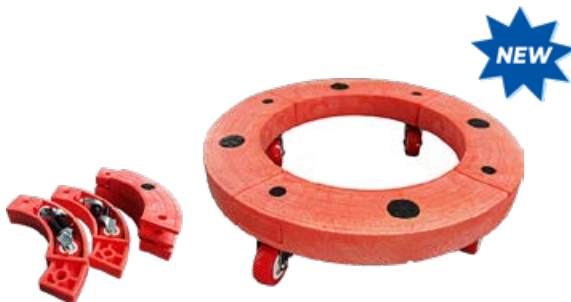


TC1620(16"x20")


**TC1616E/TC1620—KD Compact Dolly**

Dolly Size	16"x16"/ 16"x20"	Weight	1.95kg/2.15kg
Load capacity	300 lbs		

- KD style, assemble and disassemble without tools
- Compact design, easy for storage and transport.
- 2" swiveled castors, non-mark, silence.
- Rubber pads for max friction
- Ideal for moving various tools, tires, furniture, tool box, etc


**TC1616R—Round Compact Dolly**

Dolly Size	16"x16"	Weight	1.45kg
Load capacity	300 lbs		

- KD style, assemble and disassemble without tools
- Compact design, easy storage and transport.
- Circular design, used to carry flowerpots and tires.
- 2" swivel casters, can move 360 degrees.
- Rubber pads for max friction.



**TC0509—Tire Moving Dolly**

Load capacity	300lbs(136kg)	Weight	3.4kg(7.5lbs)
Dolly size	64cmx64cm x11cm (25"x25"x4.33")		

- Increase the efficiency and safety of moving wheel and tire.
- Can move 5-8 wheels or tires smoothly.
- 3" swiveled TPR castor; Non-mark, silence wheel.



**TC0509KJ—Tire Moving Dolly**

Load capacity	300lbs(136 kg)	Weight	3.4kg(7.5lbs)
Dolly size	64cmx64cmx11cm(25"x25"x4.33")		

- Increase the efficiency and safety of moving wheels and tires.
- Can move 5-8 wheels or tires smoothly.
- 3" swiveled TPR casters; Non-mark, silence wheels.
- Side handle for easy carrying.



**TC0509BAG—Tire And Wheel Cover**

Dolly size	1170x760mm	Weight	0.24kg
------------	------------	--------	--------

- Made of Polyester Taffeta material, durable and tear resistant.
- The draw cord can make the hem wrap the tire, won't be blown away outdoors.
- Suitable for tire storage of RV, trailers, campers, cars and trucks.



**TC0511—Tire Dolly**

Dolly size	64.5x64.5x11cm	Weight	2.95Kg
------------	----------------	--------	--------

- Can move 5-8 wheels or tires easily and smoothly.
- Moves 360 degrees for maximum maneuverability.
- Features four 3" non-marring swivel castors; silence wheel.



**TC0510—Tire Racking Dolly**

Max weight capacity	100kg(25kg/level)
---------------------	-------------------

- Movable wheel rack for all types of car wheels;
- Eliminates tyre distortion due to loss of tyre pressure.
- Easy to assemble.
- Supplied with rim protecting supports.
- Store wheels with rims up to 225mm;


**TC0512—KD Style Tire Rack**

Size (LxWxH)	59 x 36 x 118 cm		
Max tire diameter	69cm		
Load capacity	118 kgs	Weight	5.9kg

- Easy to assemble and disassemble;
- Mounting hardware included.
- DIY a rack easily and neatly; Ideal for storing seasonal tires, RV tires, ATV tires, etc.


**TC0513—Folding Tire Rack**

Weight	8.3kg
--------	-------

- Wall mounting powder coat finish steel tire rack.
- Adjustable width from 32" to 48", Length: 22", Height: 19.90".
- Ideal for storing seasonal tires, RV tires, ATV tires, etc.
- Holds up to 300 lbs.
- Easily accommodates four standard tires.


**TC0514—Tire Racking Dolly**

Weight	3.9kg
--------	-------

- 6 castors for better support.
- Easy to assemble.
- Rack design fits most car wheels.
- Eliminates tire distortion due to loss of tire pressure.


**TC0515—Steel Tire Rack**

Size (LxWxH)	110 x 71 x 72cm	Weight	12.80kg
--------------	-----------------	--------	---------

- Wall mounting powder coat finish steel tire rack.
- Ideal for storing seasonal tires, RV tires, ATV tires, etc.
- Holds up to 4 standard tires with rims/mages.
- Hold up to 300lbs.

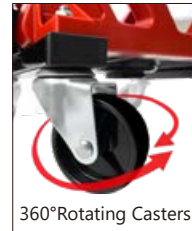

**TC0548 — Bucket Dolly**

Dia	51cm(20in)		
Max bucket base dia	29cm(11.4in.)		
load capacity	200lbs	Weight	2.3kg

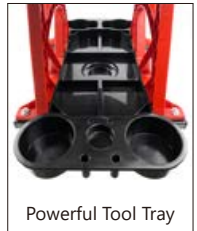
- With 5 pcs 2"(5.1cm) swiveled casters , provide smooth silent action that protects your floors.
- Designed with side trays for holding spray bottles and cleaning supply cans.



**NEW** **HOT**



360°Rotating Casters



Powerful Tool Tray



### TC0617—Ergonomic Work Seat

Size	22.9"X13.9"X17"(582x353x431mm)	Load capacity	300lbs
------	--------------------------------	---------------	--------

- Ergonomic seat with semicircle shape for long time working.
- 2.5" swiveled castors, 360-degree free rolling (one caster with brake).
- Features huge tools pan with 4 bottle holders, 4 compartments, screwdriver storage holes and 4" magnetic bowl holder for easy organization.
- Optimized structure, easy assembly and smaller carton; less freight and storage cost.



### TC0618 -- Rolling Work Seat

Size(LxWxH)	17.25"x13.5"x12.25"
-------------	---------------------

- Lightweight and durable seat with 4 swivel casters, easy rolling.
- 4 storage trays and built-in storage compartment for holding tools.
- Stackable design.
- Ideal for household projects, car repair, gardening, plumbing or more.



### TC0619 – Rolling Farm Seat

Product size(LxWxH)	17.75"x11.42"x12.25"
Extra wide wheel	7.5"(Diameter) x 6"(Width).

- Ideal for farm and plants picking.
- two extra large wheel(6" width) ideal for soft soil.
- 360degree rotating seat.



**NEW**

### TC0620 --- All Terrain Garden Work Seat

Product size(LxWxH)	49x33x31cm (19.29"x13" x12.25")
Load capacity	150kgs(330lbs)

- Full range 360 rotate seat.
- Detachable tool bag.
- Four high quality blow molding wheels.
- Two tool trays,can store the required tools.



### TC1810—Heavy Duty Trailer Dolly

- Strong, agile for easy maneuvering of boat, cargo and small trailers.
- With an extra-long handle for easy moving.
- Steel frame with black powder-coated finish.
- 10" pneumatic tires.
- Hardware included.


**SC0506—Drum Dolly**

Capacity	for 55 gallon drum		
Caster	3" swivel casters	Size	25" Dia x 6 3/16"


**SC0508—Drum Dolly**

Capacity	for 15 gallon drum		
Caster	2 3/4" x 1 1/4" swivel casters	Size	16 1/2" Dia. x 6"


**TC1933—Folding Wagon with Retractable Handle**

Folded size(LxWxH)	30.7"x 21"x 9"		
Tray size(LxWxH)	33" x 19" x 11"		
Wheel size	8"x 3.15"	Load capacity	150 lbs

- Large capacity interior for storing camping gear, beach toys, etc.
- Wide wheels for hauling gear to the beach.
- Folded into a carrying case to save space, easy to store.


**TC1934—Folding Wagon**

Folded size(LxWxH)	30.7"x 21"x 9"		
Tray size(LxWxH)	33" x 19" x 11"		
Wheel size	8"x1.75"	Load capacity	150 lbs

- Simple folding/unfolding mechanism; fold the wagon down for easy portability.
- Has 2 cup holders next to the handle.
- Folded into a carrying case to saves space,easy to store.


**TC1923—Small Folding Wagon**

Product size(LxWxH)	27.36"x15.55"x38.38"		
Folded size(LxWxH)	24"x16.33"x8.46"		
Tray size(LxWxH)	22.63" x14.17"x 8.26"		
Wheel size	6"x1.5"	Load capacity	150 lbs

- Simple folding/unfolding mechanism; fold the wagon down for easy portability.
- Has 2 cup holders next to the handle.
- Wonderful product for your home and travel.
- Folded into a carrying case to saves space,easy store.


**WB0206—Kid's Barrow**

Overall size(LxWxH)	37.4"x15.86"x16.30"		
Weight capacity	110 lbs		

- With plastic tray, made of durable metal construction and coated with paint.
- With PU wheel in size: 10"x3.00-4 features durable construction and weather resistance.
- Great for sand, dirt, and snow. Kids will enjoy lots of fun in beach, backyard or playground.



SC1627



SC1324



SC1324



SC1832



SC1832-3



SC1630



SC1630PU



SC1630-3



SC1630-3PU



SC2436



SC2436PU



SC2436-3



SC2436-3PU



SC1240



SC1250



SC1350



SC2250



SC2351



SC5341



SC5243



SC2422



SC2422-3



SC1831



bucket optional

Model	Weight(kg)	Load(kg)	Castor(in.)	Length(mm)	Width(mm)	Height(mm)
SC1324	7.0	70	2	610	342	895
SC1627	8.7	100	4	855	425	915
SC1832	7.85	150	4	810	456	787
SC18323	11	120	4	810	456	925
SC1832EH	Extra Handle Available for SC1832&SC18323					
SC1630	15	227	5	1030	435	840
SC1630PU	15	227	5	1030	435	840
SC1630-3	19.3	227	5	1030	435	840
SC1630-3PU	21	227	5	1030	435	840
SC2436	20	227	5	1180	650	840
SC2436PU	20	227	5	1180	650	840
SC2436-3	27.5	227	5	1180	650	840
SC2436-3PU	29.2	227	5	1180	650	840
SC1240	10.2	100	4	838	410	782
SC1250	13.2	100	5	838	410	825
SC1350	15	100	5	838	410	825
SC2250	18.5	150	5	1009	626	825
SC2351	23.5	150	5	1009	626	825
SC5341	17.8	100	4	755	415	875
SC5243	10.8	100	4	755	415	875
SC2422	5.06	50	3	605	545	530
SC2422-3	7.2	50	3	605	545	879
SC1831	13.4	150	3	950	450	1010

## SHELVING



ITEM:SV1224

### ITEM:SV1224

**Size** 24"x12"x48" (61x30.5x122cm)

- 4 Shelves;
- Interlocking design;
- Easy Assembly;
- No Tools Required;
- Holds Up To 50lbs Per Shelf;
- Evenly Distributed.

### ITEM:SV1836

**Size** 36"x18"x72" (91.5x45.5x183cm)

- 5 Shelves;
- Wall Mounting Bracket And;
- Interlocking Ring Included;
- Easy Assembly;
- No Tools Required;
- Holds Up To 100lbs Per Shelf;
- Evenly Distributed.



ITEM:SV1836

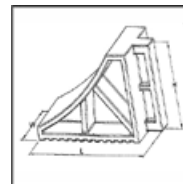
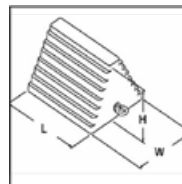




# WHEEL CHOCK



Keep vehicles from sliding, avoid dangerous accidents with these carefully designed wheel chocks that feature built in traction grippers to create maximum friction between the tire and the parking surface.



## TS001



Rubber Wheel Chock

Size (LxWxH)	200x100x150
Working Width	100mm
Weight	1.75kg



## TS001G

Rubber Wheel Chock

Size (LxWxH)	200x100x150
Working Width	100mm
Weight	1.95kg
Remark	Yellow Rubber



**TS002**

Rubber Wheel Chock

Size (LxWxH)	240x168x180
Working Width	168mm
Weight	4.78kg


**TS241**

Rubber Wheel Chock

Size (LxWxH)	167x95x95
Working Width	95mm
Weight	1.20kg


**TS242**

Rubber Wheel Chock

Size (LxWxH)	240x160x170
Working Width	160mm
Weight	5.6kg


**TS003**

Rubber Wheel Chock

Size (LxWxH)	250x200x150
Working Width	250mm
Weight	3.94kg


**TS037**

Rubber Wheel Chock

Size (LxWxH)	230x180x140
Working Width	230mm
Weight	3.02kg


**TS037G**

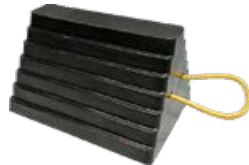
Rubber Wheel Chock

Size (LxWxH)	230x180x140
Working Width	230mm
Weight	3.45kg
Remark	Yellow Rubber


**TS037WR**

Rubber Wheel Chock

Size (LxWxH)	230x180x140
Working Width	230mm
Weight	2.93kg


**TS003-U**

Rubber Wheel Chock

Size (LxWxH)	250x200x150
Working Width	250mm
Weight	3.84kg


**TS004**

Rubber Wheel Chock

Size (LxWxH)	265x120x175
Working Width	120mm
Weight	2.72kg


**TS004G**

Rubber Wheel Chock

Size (LxWxH)	265x117x175
Working Width	117mm
Weight	2.9kg
Remark	Yellow Rubber


**TS007**

Rubber Wheel Chock

Size (LxWxH)	230x180x140
Working Width	230mm
Weight	3.05kg


**TS007G**

Painted Rubber Wheel Chock

Size (LxWxH)	230x180x140
Working Width	230mm
Weight	3.46kg





**TS165**

Rubber Wheel Chock

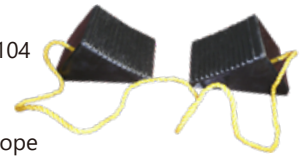
Size (LxWxH)	254x152x127
Working Width	254mm
Weight	3.60kg
Remark	2 sides with reflective tape



**TS012**

Rubber Wheel Chock

Size (LxWxH)	204x127x104
Working Width	127mm
Weight	3.1kg
Remark	Pair with rope



**TS012G**

Rubber Wheel Chock

Size (LxWxH)	204x127x104
Working Width	127mm
Weight	1.56kg
Remark	Painted Rubber



**TS012-S**

Rubber Wheel Chock

Size (LxWxH)	204x127x104
Working Width	127mm
Weight	1.54kg



**TS015**

Rubber Wheel Chock

Size (LxWxH)	270x120x150
Working Width	120mm
Weight	2.6kg



**TS016AS**

Rubber Wheel Chock

Size (LxWxH)	250x200x127
Working Width	250mm
Weight	3.6kg



**TS016A**

Rubber Chock

Size (LxWxH)	250x196x127
Working Width	250mm
Weight	3.53kg



**TS016B**

Rubber Chock(Solid)

Size (LxWxH)	250x196x127
Working Width	250mm
Weight	5.43kg



**TS016C**

Rubber Chock(W/Alu.Bottom)

Size (LxWxH)	250x196x167
Working Width	250mm
Weight	4.9kg



**TS016D**

Rubber Chock(W/Steel Bottom)

Size (LxWxH)	250x196x127
Working Width	250mm
Weight	4.52kg



**TS018**

Rubber Wheel Chock

Size (LxWxH)	195x198x104
Working Width	195mm
Weight	2.28kg



**TS063**

Rubber Wheel Chock

Size (LxWxH)	245x195x144
Working Width	245mm
Weight	3.9kg



**TS063R**

Rubber Wheel Chock

Size (LxWxH)	235x200x150
Working Width	235mm
Weight	3.9kg


**TS063G**

Rubber Wheel Chock

Size (LxWxH)	235x200x150
Working Width	235mm
Weight	3.9kg
Remark	Painted Rubber


**TS063C**

Rubber Wheel Chock

Size (LxWxH)	245x197x150
Working Width	245mm
Weight	4.09kg
Remark	With steel corrugated claw


**TS065**

Rubber Wheel Chock

Size (LxWxH)	230x200x145
Working Width	230mm
Weight	3.5kg


**TS065G**

Rubber Wheel Chock

Size (LxWxH)	230x200x145
Working Width	230mm
Weight	3.5kg
Remark	Painted Rubber


**TS101**

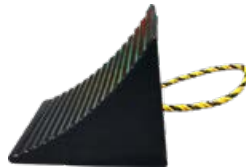
Rubber Wheel Chock

Size (LxWxH)	252x180x210
Working Width	180mm
Weight	4.88kg


**TS101WR**

Rubber Wheel Chock

Size (LxWxH)	252x180x210
Working Width	180mm
Weight	4.68kg


**TS101R**

Rubber Wheel Chock

Size (LxWxH)	245x180x190
Working Width	180mm
Weight	4.4kg


**TS101RS**

Rubber Wheel Chock

Size (LxWxH)	240x160x186
Working Width	160mm
Weight	3.1kg


**TS102**

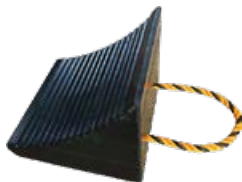
Rubber Wheel Chock

Size (LxWxH)	295x295x255
Working Width	295mm
Weight	11.76kg


**TS102R**

Rubber Chock W/Rope handle

Size (LxWxH)	295x295x255
Working Width	295mm
Weight	11.4kg


**TS350RUB**

Rubber Wheel Chock

Size (LxWxH)	355x203x207
Working Width	203mm
Weight	8.35kg





**TS103**

Rubber Wheel Chock

Size (LxWxH)	235x200x145
Working Width	235mm
Weight	3.19kg



**TS104**

Rubber Wheel Chock

Size (LxWxH)	180x255x218
Working Width	180mm
Weight	6.41kg



**TS105**

Rubber Wheel Chock

Size (LxWxH)	290x247x165
Working Width	290mm
Weight	6.57kg



**TS105R**

Rubber Wheel Chock

Size (LxWxH)	285x250x165
Working Width	285mm
Weight	6.68kg



**TS153**

Rubber Wheel Chock

Size (LxWxH)	155x155x125
Working Width	155mm
Weight	1.78kg



**TS154**

Rubber Wheel Chock

Size (LxWxH)	140x100x80
Working Width	100mm
Weight	0.76kg



**TS155**

Rubber Wheel Chock

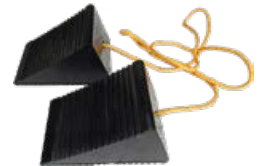
Size (LxWxH)	270x155x150
Working Width	155mm
Weight	3.65kg



**TS210**

Rubber Wheel Chock

Size (LxWxH)	130x98x67
Working Width	98mm
Weight	0.84kg/pair
Remark	Pair with rope



**TS245**

Rubber Wheel Chock

Size (LxWxH)	125x76x67
Working Width	76mm
Weight	0.66kg/pair
Remark	Pair with rope



**TS230**

Rubber Wheel Chock For Wheelchair

Size (LxWxH)	170x90x85
Working Width	90mm
Weight	0.8kg
Remark	Red Rubber Fit for wheelchair



**TS231**

Rubber Wheel Chock

Size (LxWxH)	125x80x72
Working Width	80mm
Weight	0.55kg



**TS232**

Rubber Wheel Chock

Size (LxWxH)	230x93x120
Working Width	93mm
Weight	1.54kg



**TS233**

Rubber Wheel Chock

Size (LxWxH)	260x120x125
Working Width	120mm
Weight	1.7kg


**TS234**

Rubber Wheel Chock

Size (LxWxH)	200x110x120
Working Width	110mm
Weight	1.7kg


**TS235**

Rubber Wheel Chock

Size (LxWxH)	230x100x93
Working Width	100mm
Weight	1.24kg


**TS236**

Rubber Wheel Chock

Size (LxWxH)	260x90x150
Working Width	90mm
Weight	2.0kg


**TS237**

Rubber Wheel Chock

Size (LxWxH)	260x120x150
Working Width	120mm
Weight	2.6kg


**TS238**

Rubber Wheel Chock

Size (LxWxH)	167x95x103
Working Width	95mm
Weight	1.03kg


**TS338**

Rubber Wheel Chock

Size (LxWxH)	290x156x187
Working Width	156mm
Weight	5.17kg


**TS115**

Pallet Truck Chock

Size (LxWxH)	360x300x50
Weight	2.12kg


**TS116**

Pallet Truck Chock

Size (LxWxH)	360x300x50
Weight	1.6kg


**TSX07**

Rubber Wheel Chock

Size (LxWxH)	220x220x147
Working Width	220mm
Weight	3.77kg


**TSX14**

Rubber Wheel Chock

Size (LxWxH)	105x170x76
Working Width	105mm
Weight	0.91kg


**TSX15**

Rubber Wheel Chock

Size (LxWxH)	150x178x76
Working Width	150mm
Weight	1.3kg





**TSX16**

Rubber Wheel Chock

Size (LxWxH)	310x170x76
Working Width	310mm
Weight	2.6kg



**TS408H**



Rubber Wheel Chock Pair

Size (LxWxH)	114x88.92x51
Working Width	114mm
Weight	0.74 kg



**TS408**



Rubber Aircraft Wheel Chock

Size (LxWxH)	200x107x100
Working Width	200mm
Weight	3.53kg
Remark	3 sides with reflective tape



**TS410**

Rubber Aircraft Wheel Chock

Size (LxWxH)	258x105x105
Working Width	258mm
Weight	2.2kg



**TS410PR**

Rubber Aircraft Wheel Chock

Size (LxWxH)	258x105x105
Working Width	258mm
Weight	4.6kg



**TS505**

Rubber Aircraft Wheel Chock

Size (LxWxH)	127x127x111
Working Width	127mm
Weight	1.16kg



**TS608**

Rubber Aircraft Wheel Chock

Size (LxWxH)	190x170x155
Working Width	190mm
Weight	8.36kg



**TS010S**



Rubber Aircraft Wheel Chock

Size (LxWxH)	245x130x110
Working Width	245mm
Weight	4.98kg
Remark	3 sides with reflective tape



**TS125**



Rubber Aircraft Wheel Chock

Size (LxWxH)	125x130x110
Working Width	125mm
Weight	2.61kg
Remark	3 sides with reflective tape



**TS328**

Rubber Aircraft Wheel Chock

Size (LxWxH)	200x94x65
Working Width	200mm
Weight	2.18kg/pair



**TS329**

Plastic Aircraft Chock

Size (LxWxH)	202x119x65
Working Width	202mm
Weight	0.46kg/pair



**TS229**



Structural Poly Foam Chock

Size (LxWxH)	200x100x104
Working Width	100mm
Weight	0.36kg



**TS239**

Structural Poly Foam Chock  
 Size (LxWxH) | 240x118x130  
 Working Width | 118mm  
 Weight | 0.72kg


**TS240**

Structural Poly Foam Chock  
 Size (LxWxH) | 235x203x140  
 Working Width | 203mm  
 Weight | 1.37kg


**TS116PP**

Polyfoam Pallet Truck Chock  
 Size (LxWxH) | 345x270x50  
 Weight | 0.94kg


**TS001PP**

Structural Poly Foam Chock  
 Size (LxWxH) | 200x100x150  
 Working Width | 100mm  
 Weight | 0.55kg


**TS003PP**

Structural Poly Foam Chock  
 Size (LxWxH) | 247x200x150  
 Working Width | 247mm  
 Weight | 1.46kg


**TS037PP**

Structural Poly Foam Chock  
 Size (LxWxH) | 230x180x140  
 Working Width | 230mm  
 Weight | 0.99kg


**TS768PP**

Structural Poly Foam Chock  
 Size (LxWxH) | 200x178x150  
 Working Width | 178mm  
 Weight | 0.75kg


**TS003PU**

Polyurethane Wheel Chock  
 Size (LxWxH) | 247x195x150  
 Working Width | 247mm  
 Weight | 1.3kg


**TS768**

Polyurethane Wheel Chock  
 Size (LxWxH) | 200x178x150  
 Working Width | 178mm  
 Weight | 0.83kg  
 Remark | Light weight


**TS768R**

Polyurethane Wheel Chock  
 Size (LxWxH) | 200x178x150  
 Working Width | 178mm  
 Weight | 0.85kg  
 Remark | Light weight


**TS768C**

Polyurethane Wheel Chock  
 Size (LxWxH) | 215x185x160  
 Working Width | 185mm  
 Weight | 1.1kg  
 Remark | Light weight


**TS818**

Polyurethane Wheel Chock  
 Size (LxWxH) | 290x205x210  
 Working Width | 205mm  
 Weight | 1.58kg  
 Remark | Light weight







**TS818C**

Polyurethane Wheel Chock

Size (LxWxH)	290x230x215
Working Width	230mm
Weight	2.0kg/2.7kg
Remark	Light weight



**TS818L**

Polyurethane Wheel Chock

Size (LxWxH)	290x207x207
Working Width	207mm
Weight	2.2kg
Remark	Light weight



**TS016PU**

Polyurethane Wheel Chock

Size (LxWxH)	260x224x140
Weight	2.05kg



**TS016PU-6**

Polyurethane Wheel Chock

Size (LxWxH)	260x224x140
Weight	2.7kg



**TS148**

Polyurethane Wheel Chock

Size (LxWxH)	430x368x368
Working Width	368mm
Weight	6.68kg
Remark	Heavy duty trucks



**TS148C**

Polyurethane Wheel Chock

Size (LxWxH)	440x370x370
Working Width	370mm
Weight	10.6kg
Remark	Heavy duty trucks



**TS350**

Polyurethane Wheel Chock

Size (LxWxH)	355x200x207
Working Width	200mm
Weight	2.54kg
Remark	Heavy duty trucks



**TS380**

Polyurethane Wheel Chock

Size (LxWxH)	383x303x280
Working Width	303mm
Weight	5.44kg
Remark	Heavy duty trucks



**TS630**

Polyurethane Wheel Chock

Size (LxWxH)	610x360x360
Working Width	360mm
Weight	14kg
Remark	Heavy duty trucks W/carrying handle



**TS268**

Jumbo Mining Chock

Size (LxWxH)	655x400x390
Working Width	400mm
Weight	15kg
Remark	Filled with polyurethane



**TS550**

Parking Mat

Material	PP
Size (LxWxH)	550x280x50mm
Weight	1.3kg/pair
Remark	Used for accurate parking



**TS551**

Parking Mat

Material	TPR
Size (LxWxH)	695x305x38
Weight	1.18kg
Remark	Durable, for accurate parking



**TS552**

 Garage Wall Bumper  
 Vehicle Door Protector

Material	PVC
Size (LxWxH)	620x164x15
Weight	0.8kg
Remark	Protect car door in crowded garage


**TS553**

Mini Parking Stop

Material	PP
Size (LxWxH)	508x90x41
Weight	0.34kg
Remark	Garage accurate parking


**TS554**

Garage Parking Stop

Size (LxWxH)	18"x3.5"x1.3" (455X90X32mm)
Weight	0.79kg


**TS555**

Garage Parking Stop

Size (LxWxH)	18"x3.8"x1.75" (455x96x45mm)
Weight	0.73kg


**TS008**

Plastic Wheel Chock

Size(LxWxH)	180x80x100
Working Width	80mm
Weight	0.32kg


**TS193**

Plastic Wheel Chock with Holder

Material	PP
Size (LxWxH)	252x97x113
Working Width	97mm
Weight	0.28kg


**TS194**

Plastic Wheel Chock

Size (LxWxH)	395x160x193
Working Width	160mm
Weight	0.86kg
Remark	Meet with DIN76051-46


**TS195**

Plastic Wheel Chock

Size (LxWxH)	470x195x232
Working Width	195mm
Weight	1.7kg
Remark	Meet with DIN76051-53


**TS201**

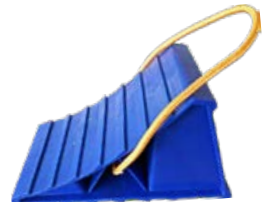
Plastic Wheel Chock

Material	PP
Size (LxWxH)	210x120x110
Working Width	120mm
Weight	0.34kg


**TS201R**

Plastic Wheel Chock

Material	PP
Size (LxWxH)	210x120x110
Working Width	120mm
Weight	0.34kg


**TS202**

Plastic Wheel Chock

Size (LxWxH)	210x152x120
Working Width	152mm
Weight	0.2kg


**TS204R**

Rubber Jocky Wheel Chock

Size (LxWxH)	170x130x45
Weight	0.50kg
Remark	for 6" castor





**TS204R-8**



Rubber Jockey Wheel Chock

Size (LxWxH)	200x130x45
Weight	0.56kg
Remark	for 8"-10" castor



**TS204**

Jockey Wheel Chock

Size (LxWxH)	204x204x35
Weight	0.22kg



**TS205**

Folding Plastic Wheel Chock

Size (LxWxH)	170x 85x131
Working Width	85mm
Weight	0.48kg/pair



**TS209**

Interlocking Tandem Wheel Chock

Material	PP
Size (LxWxH)	455x210x120
Weight	1.28kg
Remark	Interlocking design for tandem wheel, rubber pad in bottom



**TS130**

Steel Wheel Chock

Size (LxWxH)	125x102x87
Working Width	102mm
Weight	0.62kg/pair
Remark	Foldable,with anti-slip rubber mat



**TS131**

Steel Wheel Chock

Size (LxWxH)	238x190x220
Working Width	190mm
Weight	3.05kg



**TS132**

Steel Wheel Chock

Size (LxWxH)	270x200x227
Working Width	200mm
Weight	4.99kg



**TS133**

Folding Steel Wheel Chock

Size (LxWxH)	190x70x75
Working Width	70mm
Weight	0.7kg/pair



**TS134**

Steel Wheel Chock

Size (LxWxH)	300x120x160
Working Width	120mm
Weight	1.38kg
Remark	Meet with DIN76051-36



**TS135**

Steel Wheel Chock

Size (LxWxH)	230x200x125
Working Width	200mm
Weight	1.92kg/pair



**TS258**

Alu. Wheel Chock

Size (LxWxH)	300x178x200
Working Width	178mm
Weight	2.49kg
Remark	Alu.construction, no spark, not burning



**TS136Y**

Steel Wheel Chock

Size (LxWxH)	180x215x205
Working Width	215mm
Weight	6.70kg



**TS138**

Steel Wheel Chock

Size (LxWxH)	317x200x95
Working Width	55mm
Weight	3.25kg


**TS138PWSIGN**

Steel Wheel Chock

Size (LxWxH)	1040x190x505
Working Width	55mm
Weight	5.34kg


**TS139**

Steel Wheel Chock

Size (LxWxH)	266x266x190
Working Width	266mm
Weight	4.65kg


**TSL38**

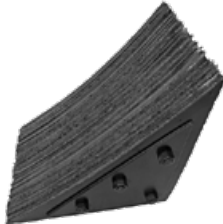
Laminated Wheel Chock

Size (LxWxH)	200x200x200
Working Width	200mm
Weight	5.4kg
Remark	Heavy duty


**TSL35**

Laminated Wheel Chock

Size (LxWxH)	356x356x320
Working Width	356mm
Weight	22kg


**TSL15**

Laminated Wheel Chock

Size (LxWxH)	254x284x137
Working Width	284mm
Weight	6.61kg
Remark	Heavy duty trucks


**TS012H**

Steel Holder For TS012

Size (LxWxH)	188x92x60
Weight	0.4kg
Fit for	TS012-S


**TS010H**

Steel Holder For TS010

Size (LxWxH)	242x128x61
Weight	0.65kg
Fit for	TS010/TS010R/TS010WR


**TS102H**

Steel Holder For TS102

Size (LxWxH)	351x155x60
Weight	0.88kg
Fit for	TS102


**TS003H**

Steel Holder For TS003

Size (LxWxH)	260x250x32
Weight	0.62kg
Fit for	TS003/TS003PU/TS003-U


**TS768C-H**

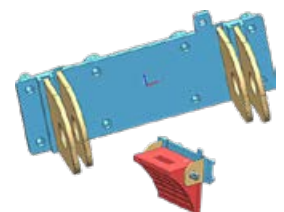
Steel Holder For TS768C

Size (LxWxH)	220x250x38
Weight	0.79kg
Fit for	TS768C


**TS7618-H**

Plastic Holder

Size (LxW)	304x120
Weight	0.6kg
Fit for	TS768/TS818/TS768C/ TS818C/TS350





**TS768H**

Steel Holder For TS768

Size (LxWxH)	160x185x100
Weight	0.52kg
Fit for TS768	



**TS818H**

Steel Holder For TS818

Size (LxWxH)	230x220x145
Weight	0.82kg
Fit for TS818	



**TS195H**

Steel Holder For TS195

Size (LxWxH)	245x210x310
Weight	1.25kg
Fit for TS195	



**TS196H**

Plastic Holder For TS196

Size (LxWxH)	280x210x310
Weight	0.58kg
Fit for TS196	



**SIGN3025** Warning Sign Plate

Size:30x25cm
Custom printing acceptable



**Chock Safety Handle**

Fit for pyramid wheel chocks with eyebolt ID: 3/4".  
 Easily move or put down the wheel chock, no need to bow.  
 Better view when operating, better judgement for environment surrounding changing.



CH001



CH002



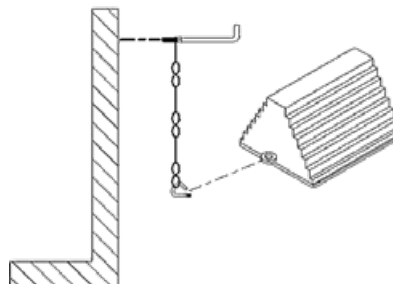
CH003



CH004

**BCK02** Wheel Chock Chain Kit

Include 15.5ft chain and wall mount anchor;  
 Keep chock in place and prevent theft.



## AIRCRAFT WHEEL CHOCK



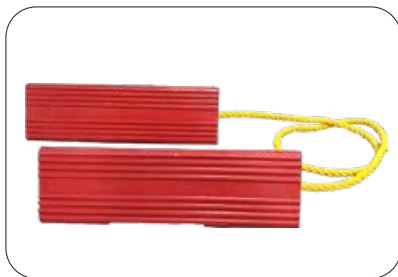
TS408



TS408G



TS010



TS518G



TS518PU



TS010S

Model	W(mm/in)	L(mm/in)	H(mm/in)	Working Width(mm/in)	Weight(kg)	Remark
TS408H	88.92/3.5	114/4.5	51/2	114/4.5	1.2	Black Rubber/Pair
TS408	107/4.2	200/7.8	100/3.9	200/7.8	3.36	Black Rubber/Pair
TS408G	107/4.2	200/7.8	100/3.9	200/7.8	3.36	Red Rubber/Pair
TS410	105/4.1	258/10.2	105/4.1	258/10.2	2.2	Black Rubber/Pc
TS410PR	105/4.1	258/10.2	105/4.1	258/10.2	4.6	Black Rubber/Pair
TS010	155/6.1	455/17.9	136/5.3	455/17.9	13.63	Black Rubber/Pair
TS010S	130/5.1	245/9.6	110/4.3	245/9.6	4.9	Black Rubber/Pair
TS010SG	130/5.1	245/9.6	110/4.3	245/9.6	4.9	Painted Rubber/Pair
TS125	130/5.1	125/4.9	110/4.3	125/4.9	2.5	Black Rubber/Pair
TS506	130/5.1	165/6.5	115/4.5	165/6.5	1.56	Black Rubber/Pc
TS512/TS512G	130/5.1	300/11.8	120/4.7	300/11.8	7.88	Rubber/Pair
TS518	130/5.1	450/17.7	120/4.7	450/17.7	12.06	Black Rubber/Pair
TS518G	130/5.1	450/17.7	120/4.7	450/17.7	12.06	Red Rubber/Pair
TS518PU	130/5.1	450/17.7	120/4.7	450/17.7	3.4	Yellow PU/Pair
TS524	130/5.1	600/23.6	120/4.7	600/23.6	16.14	Black Rubber/Pair
TS536PU	130/5.1	910/35.8	120/4.7	910/35.8	6.8	Yellow PU/Pair



TS608



TS612

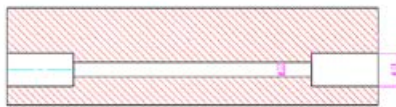


TS622G



TS624

Model	W(mm/in)	L(mm/in)	H(mm/in)	Working Width(mm/in)	Weight(kg)	Remark
TS608	170/6.7	190/7.5	155/6.1	190/7.5	7.5	Black Rubber/Pair
TS612/TS612G	165/6.5	304/12	150/5.9	304/12	12.04	Rubber/Pair
TS616	165/6.5	405/15.9	150/5.9	405/15.9	15	Black Rubber/Pair
TS618	165/6.5	455/17.9	150/5.9	455/17.9	18.9	Black Rubber/Pair
TS620-S	165/6.5	508/20	150/5.9	508/20	10.7	Black Rubber/Pc
TS622G	165/6.5	560/22	150/5.9	560/22	11.17	Red Rubber/Pc
TS624	165/6.5	610/24	150/5.9	610/24	25.7	Black Rubber/Pair
TS624-SG	165/6.5	610/24	150/5.9	610/24	12.85	Yellow Rubber/Pc
TS629	165/6.5	750/29.5	150/5.9	750/29.5	15.5	Black Rubber/Pc



TS714



TS724

Model	W(mm/in)	L(mm/in)	H(mm/in)	Working Width(mm/in)	Weight(kg)	Remark
TS714	170/6.7	350/13.8	155/6.1	350/13.8	7.59	Black Rubber/Pc
TS718	170/6.7	450/17.7	155/6.1	450/17.7	10.09	Black Rubber/Pc
TS724	170/6.7	600/23.6	155/6.1	600/23.6	13.59	Black Rubber/Pc



TS912

Model	W(mm/in)	L(mm/in)	H(mm/in)	Working Width(mm/in)	Weight(kg)	Remark
TS912	225/8.9	300/11.8	200/7.9	300/11.8	10.12	Black Rubber/Pc
TS918	225/8.9	450/17.7	200/7.9	450/17.7	15	Black Rubber/Pc

# MOLDED DOCK BUMPER

## RB41818

Molded Dock Bumper

Size (LxWxH)	460x460x100 (18" x 18" x 4")
Hole Distance	241mm
Weight	15.4kg



## RB32222

Molded Dock Bumper

Size (LxWxH)	560x560x80 (22" x 22" x 3")
Hole Distance	406mm
Weight	19.50kg



## RB32412

Molded Dock Bumper

Size (LxWxH)	610x300x80 (24" x 12" x 3")
Hole Distance	469*152mm
Weight	16.88kg



## RB41312

Molded Dock Bumper

Size (LxWxH)	330x300x100 (13" x 12" x 4")
Hole Distance	235*177mm
Weight	10.87kg



## RB42010

Molded Dock Bumper

Size (LxWxH)	500x250x100 (19-7/10" x 10" x 4")
Hole Distance	254mm
Weight	13.2kg



## RB3585

Molded Dock Bumper

Size (LxWxH)	200x135x90 (8"x5-3/10"x3-1/2")
Hole Distance	142*89mm
Weight	2.36kg



## RB21602

Molded Dock Bumper

Size (LxWxH)	400x50x50 (16" x 2" x 2")
Hole Distance	165mm
Weight	1.10kg



## TRB01

Trailer Bumper

Size (LxWxH)	110x60x50 (4-1/3" x 2-3/8" x 2")
Hole Distance	N
Weight	0.47kg



## TRB02

Trailer Bumper

Size (LxWxH)	190x60x50 (7-1/2" x 2-3/8" x 2")
Hole Distance	N
Weight	0.86kg



## TRB04

Trailer Bumper

Size (LxWxH)	195x80x80 (7-2/3" x 3-1/8" x 3-1/8")
Hole Distance	3-3/8"
Weight	1.06kg



## TRB05

Trailer Bumper

Size (LxWxH)	195x60x51 (7-2/3" x 2-3/8" x 2")
Hole Distance	4-3/4"
Weight	0.6kg



## TRB13

Trailer Bumper

Size (LxWxH)	150x100x86 (6" x 4" x 3-1/4")
Hole Distance	2-3/4"
Weight	1.6kg







**TRB14**

Trailer Bumper

Size (LxWxH)	145x70x77 (5-5/8" x 2-3/4" x 3")
Hole Distance	2-1/2"
Weight	0.86kg



**TRB15**

Trailer Bumper

Size (LxWxH)	144x69x80 (5-5/8"x2-3/4"x3-1/8")
Hole Distance	2-1/2"
Weight	0.82kg



**TRB16**

Trailer Bumper

Size (LxWxH)	160x93x89 (6-3/10"x3-2/3"x3-1/2")
Hole Distance	3"
Weight	1.53kg



**TRB17**

Trailer Bumper

Size (LxWxH)	120x75x87 (4-3/4" x 3" x 3-2/5")
Hole Distance	2-3/5"
Weight	0.77kg



**TRB18**

Trailer Bumper

Size (LxWxH)	152x90x110 (6" x 3-1/2" x 4-1/3")
Hole Distance	3-1/2"
Weight	1.68kg



**TRB19**

Trailer Bumper

Size (LxWxH)	65x65x75 (2-3/5" x 2-3/5" x 2-9/10")
Hole Distance	N
Weight	0.24kg



**TRB19-4P**

Trailer Bumper

Size (LxWxH)	65x65x75 (2-3/5" x 2-3/5" x 2-9/10")
Hole Distance	N
Weight	1kg



4pcs

**TRB20**

Trailer Bumper

Size (LxWxH)	595x100x120 (23-2/5" x 3-9/10" x 4-3/4")
Hole Distance	7-9/10" 5-9/10"
Weight	7.46kg



**TRB21**

Trailer Bumper

Size (LxWxH)	358x100x107 (14-1/10" x 3-9/10" x 4-1/5")
Hole Distance	7-9/10"
Weight	4.15kg



**TRB22**

Trailer Bumper

Size (LxWxH)	357x88x86 (14-1/10" x 3-1/2" x 3-2/5")
Hole Distance	7-9/10"
Weight	2.8kg



**TRB23**

Trailer Bumper

Size (LxWxH)	445x40x58 (17-1/2" x 2-3/10" x 1-3/5")
Hole Distance	4-7/10"
Weight	1.25kg



**TRB24**

Trailer Bumper

Size (LxWxH)	245x80x90 (9-7/10" x 3-1/5" x 3-1/2")
Hole Distance	4-7/10"
Weight	1.81kg



**TRB25**

Trailer Bumper

Size (LxWxH)	210x50x55 (8-1/4" x 1-9/10" x 2-1/5")
Hole Distance	4-9/10"
Weight	0.57kg


**TRB140**

Trailer Bumper

Size (LxWxH)	100x100x80 (3-9/10" x 3-9/10" x 3-1/5")
Hole Distance	1.13"
Weight	0.94kg


**TRB-BR80**

Boat Roller

Size (LxWxH)	76x76x80 (3"x3"x3-3/20")
Hole Distance	11/20"
Weight	0.38kg


**TRB-BR126**

Boat Roller

Size (LxWxH)	76x76x126 (3" x 3" x 5")
Hole Distance	11/20"
Weight	0.57kg


**TRB26**

Trailer Bumper

Size (LxWxH)	152x76x89 (6"x3"x3-1/2")
Hole Distance	3"
Weight	1.05kg


**TRB27**

Trailer Bumper

Size (LxWxH)	152x76x108 (6"x3"x4-1/4")
Hole Distance	2.75"
Weight	1.4kg


**TRB140SET**

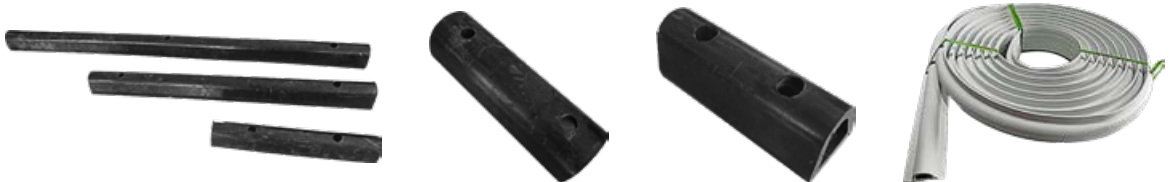
Truck Roller Bumper(2-Wheel)

Size (LxWxH)	220x110x120 (8-6/10"x4-1/3"x4-7/10")
Hole Distance	1-13/100"
Weight	6kg


**TRB140SET2**

Truck Roller Bumper(4-Wheel)

Size (LxWxH)	400x110x120 (15-7/10"x4-1/3"x4-7/10")
Hole Distance	N
Weight	11.14kg

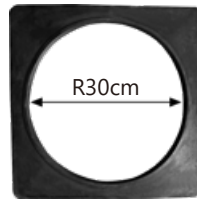

**D DOCK BUMPER**


Model	W(in)	H(in)	D(in)	Hole Distance (in)	Weight(kg)
RBD212	12	2	2	6	0.56
RBD218	18	2	2	12	0.9
RBD224	24	2	2	18	1.12
RBD236	36	2	2	15	1.7
RBD412	12	4	4	6	2.12
RBD424	24	4	4	18	4.6
RBD436	36	4	4	15	6.67
PVC7525	2.9	393	1	-	7.5



# CONE STABILIZER/BALLAST

Prevents cones from blowing over in high winds.  
Fits over 18" and 28" cones.



RC001



RC007



RC008

# MUD FLAP

Model	Material	H(mm)	W(mm)	W(kg )
Half Moon Mud Flap				
UMF2	Rubber	335	215	0.66/ pair
UMF4	Rubber	400	245	0.97 / pair
MF10	PVC	345	230	0.46/ pair
Square Mud Flap				
UMF3	Rubber	210	190	0.48/ pair
MF910	PVC	255	235	0.33/ pc
MF914	PVC	350	230	0. 48/ pc
MF1111	PVC	280	280	0. 49/ pc
MF1114	PVC	355	285	0. 63/ pc
MF2424	PVC	610	610	2.30/ pc
MF2430	PVC	610	750	3. 40/ pc



MF2424



MF2430

# LAMINATED DOCK BUMPERS



RBL1120



RBL1810



RBL-SF1410



Model	W (in.)	H (in.)	D (in.)	Thickness (in.)	Mounting Holes O.C.W(in.)	Mounting Holes O.C.H(in.)	Mounting Holes Dia(in.)	Holes Shape	Number of Mounting Holes	Weight (lbs)
RBL-SF1120	12.75	20	5.25	7.5	11	6	3/4	Square	8	71.41
RBL-SF1124	12.75	24	5.25	7.5	11	4	3/4	Square	12	87.39
RBL-SF1136	12.75	36	5.25	7.5	11	4	3/4	Square	18	128.93
RBL-SF1410	15.75	10	5.25	10.5	14	6	3/4	Square	4	43.42
RBL-SF1412	15.75	12	5.25	10.5	14	4	3/4	Square	6	53.23
RBL-SF1810	19.75	10	5.25	14.5	18	6	3/4	Square	4	56.31
RBLSF1812	19.75	12	5.25	14.5	18	4	3/4	Square	6	69.21
RBL1124S	12.75	24	4.5	7.5	11	4	3/4	Square	12	51.35
RBL1136S	12.75	36	4.5	7.5	11	4	3/4	Square	18	79.01
RBL1212S	13.75	12	4.5	8.5	12	4	3/4	Square	6	28.10
RBL1810S	19.75	10	4.5	14.5	18	6	3/4	Square	4	35.59
RBL1812S	19.75	12	4.5	14.5	18	4	3/4	Square	6	43.31
RBL2410S	25.75	10	4.5	20.5	24	6	3/4	Square	4	48.27
RBL2412S	25.75	12	4.5	20.5	24	4	3/4	Square	6	59.07
RBL3610S	37.75	10	4.5	32.5	36	6	3/4	Square	4	73.06
RBL1120	12.75	20	4.5	7.5	11	8	3/4	Round	6	41.99
RBL1124	12.75	24	4.5	7.5	11	10	3/4	Round	6	52.12
RBL1130	12.75	30	4.5	7.5	11	8	3/4	Round	8	63.59
RBL1136	12.75	36	4.5	7.5	11	10	3/4	Round	8	79.01
RBL1210	13.75	10	4.5	8.5	12	6	3/4	Round	4	23.36

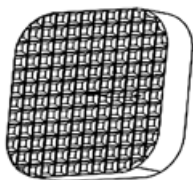


Model	W (in.)	H (in.)	D (in.)	Thickness (in.)	Mounting Holes O.C.W(in.)	Mounting Holes O.C.H(in.)	Mounting Holes Dia(in.)	Holes Shape	Number of Mounting Holes	Weight (lbs)
RBL1212	13.75	12	4.5	8.5	12	8	3/4	Round	4	28.21
RBL1410	15.75	10	4.5	10.5	14	6	3/4	Round	4	26.78
RBL1412	15.75	12	4.5	10.5	14	8	3/4	Round	4	34.71
RBL1810	19.75	10	4.5	14.5	18	6	3/4	Round	4	35.82
RBL1812	19.75	12	4.5	14.5	18	8	3/4	Round	4	42.43
RBL2406	25.75	6	4.5	20.5	24	4	3/4	Round	4	30.08
RBL2410	25.75	10	4.5	20.5	24	6	3/4	Round	4	48.27
RBL2412	25.75	12	4.5	20.5	24	8	3/4	Round	4	57.97
RBL3010	31.75	10	4.5	26.5	30	6	3/4	Round	4	59.95
RBL3606	37.75	6	4.5	32.5	36	4	3/4	Round	4	46.28
RBL3610	37.75	10	4.5	32.5	36	6	3/4	Round	4	73.06
RBL3612	37.75	12	4.5	32.5	36	8	3/4	Round	4	88.60
RBL9610	97.75	10	4.5	92.5	96	6	3/4	Round	4	196.16
RBL9612	97.75	12	4.5	92.5	96	8	3/4	Round	4	238.25
RBL1210DB	11.5	10	4.5	8.5	N/A	6	3/4	Round	2	22.37
RBL1120DB	10.5	20	4.5	7.5	N/A	8	3/4	Round	3	41.21
RBL1120-6	12.75	20	6	7.5	11	8	3/4	Round	6	51.79
RBL1124-6	12.75	24	6	7.5	11	10	3/4	Round	6	62.81
RBL1130-6	12.75	30	6	7.5	11	8	3/4	Round	8	78.35
RBL1136-6	12.75	36	6	7.5	11	10	3/4	Round	8	95.65
RBL1210-6	13.75	10	6	8.5	12	6	3/4	Round	4	27.44
RBL1212-6	13.75	12	6	8.5	12	8	3/4	Round	4	34.05
RBL1410-6	15.75	10	6	10.5	14	6	3/4	Round	4	33.50
RBL1412-6	15.75	12	6	10.5	14	8	3/4	Round	4	39.56
RBL1810-6	19.75	10	6	14.5	18	6	3/4	Round	4	44.96
RBL1812-6	19.75	12	6	14.5	18	8	3/4	Round	4	53.34
RBL2410-6	25.75	10	6	20.5	24	6	3/4	Round	4	61.05
RBL2412-6	25.75	12	6	20.5	24	8	3/4	Round	4	73.06
RBL3010-6	31.75	10	6	26.5	30	6	3/4	Round	4	75.16
RBL3610-6	37.75	10	6	32.5	36	6	3/4	Round	4	92.90
RBL3612-6	37.75	12	6	32.5	36	8	3/4	Round	4	109.21
RBL9612-6	97.75	12	6	92.5	96	8	3/4	Round	4	300.52

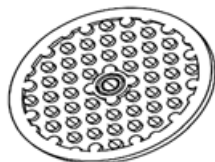


# JACK PAD

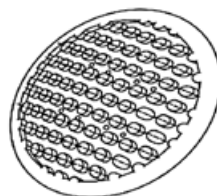
Model	Dimensions	Thickness	Weight
RJP01	DIAMETER: 118 mm	22.8mm	0.19kg
RJP02	DIAMETER: 106.17 mm	6mm	0.07kg
RJP03	DIAMETER: 138.75mm	32.2mm	0.29kg
RJP04	DIAMETER:147.38mm	18.71mm	0.28kg
RJP05	DIAMETER:122.43mm	27.9mm	0.19kg
RJP06	DIAMETER:137.66mm	19.8mm	0.27kg
RJP07	DIAMETER: 156.55mm	31mm	0.40kg
RJP08	DIAMETER: 136.2mm	11.9mm	0.24kg
RJP09	DIATEMER: 98.96mm	8.1mm	0.07kg
RJP10	DIATEMER: 107.36mm	23.75mm	0.17kg
RJP11	DIAMETER: 85.29mm	7.5mm	0.05kg
RJP12	DIAMETER: 70.67mm	7.6mm	0.06kg
RJP13	DIAMETER: 94.38mm	19.5mm	0.09kg
RJP14	DIAMETER: 95.17mm	14.5mm	0.14kg
RJP15	DIAMETER: 102.59mm	7.8mm	0.08kg
RJP16	DIAMETER: 75.74mm	8.5mm	0.08kg
RJP18	DIAMETER: 94mm	6.2mm	0.05kg
RJP19	DIAMETER: 87mm	20.2mm	0.12kg
RJP080	DIAMETER: 80mm	19mm	0.09kg
RJP130	DIAMETER: 130mm	12.5mm	0.29kg
RJP138	DIAMETER: 138mm	24mm	0.72kg
RJP063	63x44x50mm	50mm	0.12kg
RJP075	DIAMETER: 75mm	34.5mm	0.20kg
RJP114PR	114x38x43mm	43mm	0.24kg
RJP075T4	DIAMETER: 76mm	25mm	0.15kg/pc
RJP075A4	DIAMETER: 70mm	36mm	0.13kg/pc
RJP075B4	DIAMETER: 61mm	26mm	0.08kg/pc
RJP075M4	DIAMETER: 67mm	45mm	0.13kg/pc



RJP01



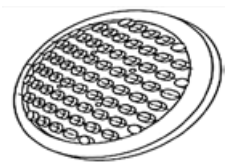
RJP02



RJP03



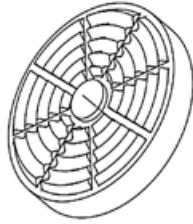
RJP04



RJP05



RJP06



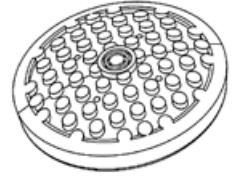
RJP07



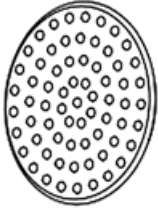
RJP08



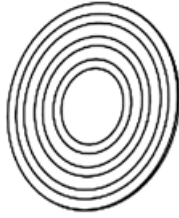
RJP09



RJP10



RJP11



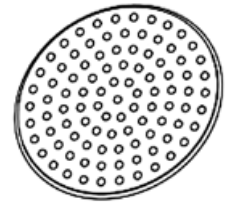
RJP12



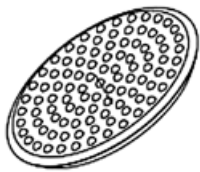
RJP13



RJP14



RJP15



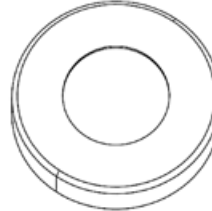
RJP16



RJP18



RJP19



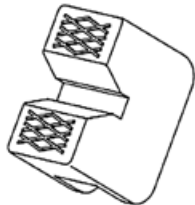
RJP080



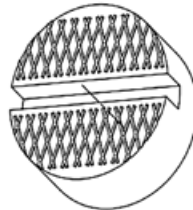
RJP130



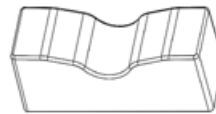
RJP138



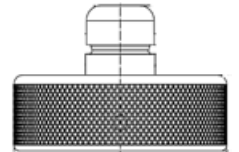
RJP063



RJP075



RJP114PR



RJP075T4 for TESLA



RJP705A4 for Audi



RJP705B4 for BMW



RJP705M4 for Mercedes Benz



**TS185KIT---Farm Jack Pad W/Handle Coupler**

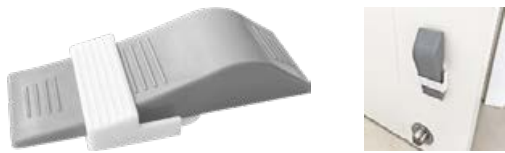
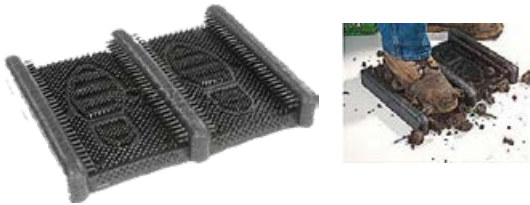
Size	285x285 mm
------	------------

- Fits almost any Hi-Lift, Farm Jack, or similar jack including All-Cast Jack, Cast/Steel Jack, X-TREME Jack, UTV Jack, etc.
- Gives your jack better footing and greater stability during the lifting.
- The handle coupler secures the jack handle to the upright steel bar, eliminating rattle and keeping everything in place.
- Used on soft ground like sand, mud, grass.


**TS152---Boot Scraper**

Size	16"x12"	Material	rubber	Weight	1.8kg
------	---------	----------	--------	--------	-------

- Stop dirt, sand, grass, snow, salt and mud at the door!
- Portable or bolt down for permanent installation.
- Easy to clean.
- Flexible fingers scrub sides and bottom of shoes.

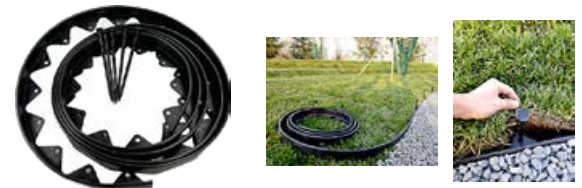

**TS595---Door Wedge With Holder**

- With unique surface to stop and wedge any door being closed by wind, pet, baby.
- Non-skid bottom, work well on every floor surface such as concrete floor, carpet, wood, tile.
- Come with holder, convenient to store.
- The holder with sticker, stick the door stopper on the door when it is not in use.
- Scientific angle 15° to wedge all kind of doors perfectly.

**GLE050---Non-Digging Landscape Edging**

Length	15.2M/50FT	Weight	3.4kg
--------	------------	--------	-------

- Soft material offers greater flexibility for custom installations.
- Unlike a wooden edging, it will not degrade or succumb to pest infestations.
- Each set comes with 12 nails.


**TIE DOWN STRAP**






ETSU18H1 ETSU18H0 ETSU13 ETSU22 ETSU15



Non-tie rubber band

- Self-gripping no need to tie knots.
- Strong hold.
- Custom your desired length.
- UV resistant material.



- Made of material incredibly durable.
- Comes with integrated nylon/steel hook ends.
- Unique "Loop End" Designed.
- UV, Chemical, Fuel and Oil Resistant.

Model	Length With S Hook(in.)	Hook Size(mm)	Strap Width(mm)	Weight(kg)
ETSC15	15"	55*50	11	0.07
ETSC21	21"	55*50	11	0.093
ETSC31	31"	55*50	11	0.126
ETST15	15"	55*50	18	0.078
ETST21	21"	55*50	18	0.11
ETST31	31"	55*50	18	0.14
ETST41	41"	55*50	18	0.19
ETSA34 (adjustable)	35.75"	55*50	18	0.16
ETSG15	15"	55*50	18	0.093
ETSG21	21"	55*50	18	0.113
ETSG31	31"	55*50	18	0.16
Model	Length (in.)	Hook Size(mm)	Strap Width (mm)	Weight(kg)
ETSU13	13" (with hook)	60*44 (two hook)	10	0.03
ETSU18H0	16.5"	no hook	23	0.03
ETSU18H1	18" (with hook)	60*44 (one hook)	23	0.03
ETSU22	22" (with hook)	60*44 (two hook)	10	0.04
ETSU15	15.8" (with hook)	55*50	15	0.06

## PET PRODUCTS



### PET130—Pet Chewing Rubber Wheel

Diameter	130mm(5")	Material	Natural rubber
----------	-----------	----------	----------------

- Various design are available.
- Promotes your pet's instinctual need to play and encourages lots of healthy exercise.



### PET230—Pet Flying Rubber Disc

Diameter	230mm(9")	Material	Natural rubber
----------	-----------	----------	----------------

- Made of natural rubber, offers a softer, forgiving catch during fetch.
- Various design are available.



### PET251—Pet Flying Disc

Diameter	250mm(9.875")	Material	Natural rubber
----------	---------------	----------	----------------

- Various design are available.



### PET115—Pet Chewing Toy

Height	115mm(4.5")	Material	Natural rubber
--------	-------------	----------	----------------

- Various design are available.



### PET2504—Pet Tire Toy

Diameter	200mm
----------	-------

- The natural rubber formula is created to be tough for determined chewers.
- This toughest rubber tire shape is strategically designed for fun games of fetch.
- The tires is even more enticing when the inside wall is stuffed with Snacks or peanut butter.



### TS310—Pet Stair Ramp

Size(LxWxH)	79.5cmx40cmx41cm		
Weight	2.28kg	Max capacity	30kg

- Light weight and durable.
- Folding type of easy storage.
- Comfort access to 16" height: ideal for sofa, bed, and some SUVs.



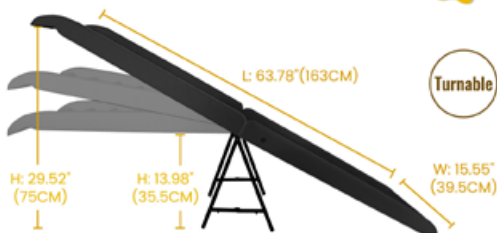
### TS315 --- Extended Pet Stair Ramp

Size(LxWxH)	163cmx39.5cmx75cm		
Weight	5.08kg	Max capacity	68kg

- Light weight and durable.
- Folding type of for easy storage.
- Comfort access to 13.98"-29.52"(35.5-75cm) height: fit for most vehicle height.



### Flexible Height Adjustment



Adjustable from 13.98" to 29.52", widely used in trucks, SUV, cars etc.



### TS316---Retractable Aluminum Pet Ramp

(three section)



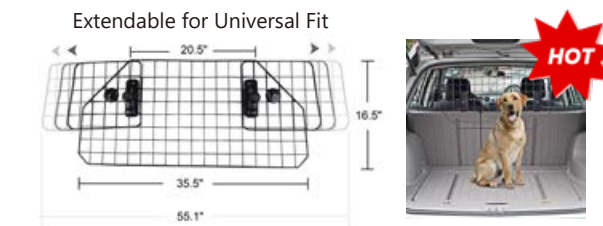
Folded Size (LxWxH)	70.3x42.5x10.5cm		
Open Size (LxWxH)	157.5x42.5x8.5cm		
Weight	5.2kg	Max capacity	90 kg

- Made of high quality aluminum and plastic, lightweight.
- Large rubber feet for stability.
- Telescopic pet ramps, easy to store in your vehicle.
- Bone-shaped rubber pads provide extra grip.

### TS316-4(four section)



Folded Size (LxWxH)	Open Size (LxWxH)
73x42.5x13.9cm	204.6x42.5x8.5cm
Weight	Max capacity
6.9 kg	90 kg

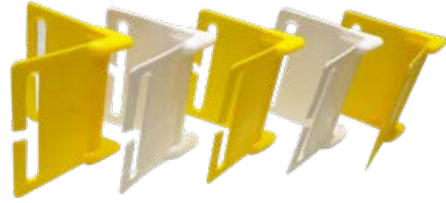


### TS318--- Pet Barrier

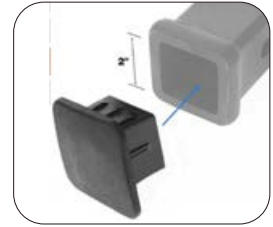
Main Panel Size(LxW)	90cm x 42cm(35.5"x16.5")
----------------------	--------------------------

- Keep your pet safely away from the driver and passengers.
- Heavy duty wire construction and steel material for long lasting durability.
- Easy to install and remove with no tools required.
- Extended width from 90cm to 140cm to accommodate most cars, SUVs, hatchbacks.

**CUSTOM RUBBER PARTS**

**CARTON CORNER PROTECTOR**

**THC510---Trailer Hitch Cover**

- Perfect fits for standard 2"x2" receiver tube.
- Can keep the rain, dust, snow and ice out from the hitch tube and protect the receiver tube from rust.
- Heat resistant and easy to install.
- The friction from the ribs can keep it always there.


**THC321(1.25")/THC511(2")---Trailer Hitch Cover**

- Perfect fits for any 2"x2" and 1.25"x1.25" trailer receiver tube.
- Keep your trailer hitch receiver tube clean and protected when not towing.
- Has a rubber strap that can be fixed to the trailer tube to prevent it from being lost during the car wash.

**RACK PROTECTOR**
**Rack Protector**

Protect the shelf post from being damaged by the forklift truck in the stock

A80: Fit for shelf post of 80mm	H:295mm
A80-45: Fit for shelf post of 80mm	H:450mm
A100: Fit for shelf post of 100mm	H:295mm
A100-45: Fit for shelf post of 100mm	H:450mm
A122-45: Fit for shelf post of 122mm	H:450mm


**CABLE PROTECTOR**
**CP003 Interlocking Cable Protector**

Size (LxWxH) | 1020x135x20mm  
 Cable Size | 1020x13mm


**CP004 Flexible Cable Protector**

Size (LxWxH) | 1200x80x24mm  
 Hole diameter | 13mm


**CP005 Portable Speed Bump**

Size (LxWxH) | 3000x225x50mm  
 Cable Weight | 13.18kg





# SAFETY GUARD



Machine Guard



Steel Rack protector



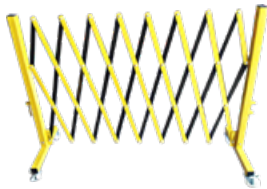
Folding Bollard



Bollard Removable kit



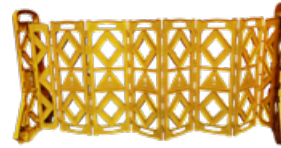
Bollard



Steel Folding barrier



Plastic Folding barrier



Plastic Folding barricade



BCK01---Safety Bollard Chain  
Chain length:10ft

Item	Model	Size	Unit Weight
Machine Guard	MGB2448	4.5"*24"*48"	18kg
	MGB3648	4.5"*36"*48"	25kg
	MGB4248	4.5"*42"*48"	29kg
Bollard	MBO4524	4.5"*24"	6kg
	MBO4536	4.5"*36"	9kg
	MBO4542	4.5"*42"	10.3kg
	MB04548	4.5"*48"	11kg
	MBO5524	5.5"*24"	4.86kg
	MBO5536	5.5"*36"	9.76kg
	MB05542	5.5"*42"	11.20kg
Folding Bollard	MBF4036	36"	10.10kg
	MBF4042	42"	11.01kg
	MBF4048	48"	11.91kg
Bollard Removable Kit	MBO8-45	Fit for 4. 5"Bollard	3.5kg
Steel Rack Protector	AS12-45	Fit for rack 4. 5" Width ; H:12"	4.6kg
Steel Folding Barrier	SFB4100	H:40" , Max Extended Width:100"	14.2kg
	SFB4105	H:37.5", Max Extended Width: 100"	9.9kg
Plastic Folding Barrier	PFB3100	H:38", Max Extended Width: 1 00"	3kg
	PFB3900	H:39", Max Extended Width:157" With 5" TPR Wheel For Easy Moving	15kg

## MOTORCYCLE WHEEL CHOCK



### MWC01-Economy Motorcycle Wheel Chock

- 25mm steel tube structure for heavy duty purpose.
- Powder-coated finish, rust-resistant.
- Bolt-connected structure for compact storage, easy assembling.
- Hold most type of motorcycle tire, up to 5-inch wide.



### MWS01--Motorcycle Wheel Spinner

- Made from heavy duty strengthened plastic.
- Move the wheel freely for wheel cleaning or chain lubrication.
- Max capacity: 400LBS.



### MWC03-Self-locking Motorcycle Wheel Chock

- Easy for one person to strap-down a motorcycle.
- Mounts securely to floor, truck or trailer.
- Fits most motorcycle wheels.
- Formed steel with carbon steel hardware.



### MWC15-Removable Motorcycle Wheel Chock

- Easy for one person to strap-down a motorcycle.
- Mounts securely to floor, truck or trailer.
- Fits most motorcycle wheels.
- Formed steel with carbon steel hardware.



### MWC16-Removable Motorcycle Wheel Chock

- Easy for one person to strap-down a motorcycle.
- Mounts securely to floor, truck or trailer.
- Fits most motorcycle wheels.
- Formed steel with carbon steel hardware.
- Fit for E-track.



### MWC05-Motorcycle Stand/Wheel Chock

- Adjustable cradle stop to fit most motorcycle wheels.
- Tilting wheel adapter automatically secures motorcycle.
- Two eye loops for secure strapping.
- Free-standing, can be mounted to floor, truck or trailer bed.
- Rust and corrosion resistance.



**MWC04—Simplified Self-locking Motorcycle Wheel Check**



**MWC10—Wall Anchor**



- Size: 120mmX85mmX50mm
- Weight: 0.72kg



**MWC07—Motorcycle Wheel Chock**

- Adjusts to fit different tire sizes .
- Tie down design for better stability .
- Black powder-coated steel construction.
- Permanently mount to trailers, truck beds, table lifts, and more.

**MWC08—Removable Motorcycle Wheel Chock**

- Heavy duty 7/8" chrome-plated tube.
- Removable constructure with floor-mounted receivers.
- Fits tires up to 5 1/2 wide.
- 10in.Lx5 1/2in.Wx9in.H



**MWC06—Motorcycle Wheel Chock**

- 1-1/4 inch steel tube structure. • Powder-coated finish.
- Bolt-connected structure for compact storage.
- Hold motorcycle tire up to 5-1/2 inch.

**MWC09—Motorcycle Wheel Chock**

- Heavy duty bolt-down motorcycle chock.
- Ideal for truck beds, trailers or garage floors.
- Fit for various tire width.



**MWC11 – Motorcycle Front Wheel Lift Stand**

- The front lift stand nestles underneath your front wheel forks and lifts your motorcycle's front tire off the ground and into the perfect position for maintenance, repair or storage.

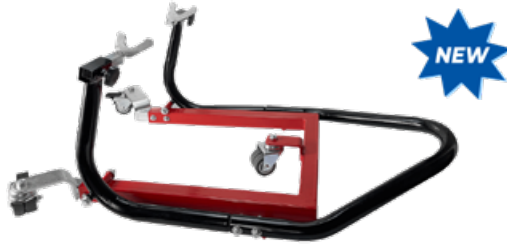


**MWC12—Motorcycle Rear Wheel Stand**

- Motorcycle swingarm rear wheel stand.
- Completely lifts the rear of your swingarm motorcycle for changing a tire, tightening the chain, serving brakes or changing the oil.
- Prevent flat spots on the tires in storage.

**MWC18--Motorcycle Moving Dolly**

- Maneuvering motorcycle in tight space.
- Load capacity: 1250lbs/550kg.
- Five easy running heavy-duty casters ensure low effort when maneuvering.
- Adjustable for different length to kickstand.


**MWC21--Motorcycle Stand Dolly**
**Motorcycle Front Wheel Stand Dolly**

86x48.7x35.5cm (33.86"x19.17"x13.98")  
 Width adjustable from 10"-14"

**Motorcycle Rear Wheel Stand Dolly**

86x48.7x32.5cm(33.86"x19.17"x12.8")  
 Width adjustable from 9.5"-14.35"

- Flexible use of two accessories.
- With the lock, to increase the stability when use as dolly.
- Two wheels with brakes, used as stand when the brakes are locked.
- Adjustable width, fits different kinds of motorcycle.
- Multifunctional double wheel allows for sturdy movements.

**FLOOR TILES**

**RBM1504--Rubber Safety Step Tread**

Size	15.5"x4"	Unit Weight	0.13kg
------	----------	-------------	--------

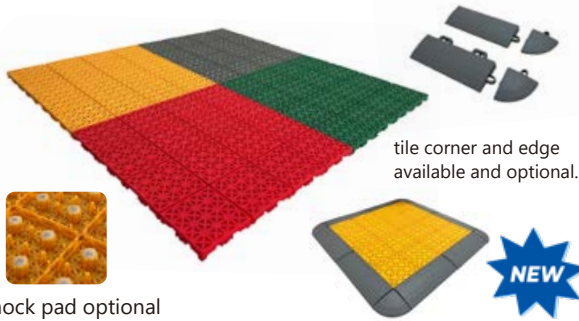
- Make each step safer ,these staircase step treads are designed to provide a non-slip surface for your stairs.
- Extra traction to prevent slips, designed for outdoor use.
- Very easy to install, the precut peel and stick design allow each of our anti slip for stair treads to be installed without having to measure and cut.


**RBM1212--Interlocking Rubber Floor Tile**

Size	12"x12"	Unit Weight	0.45kg
------	---------	-------------	--------

- Grid design allows the liquid to flow away rapidly.
- Snap-in design, easy to connect to other tiles.
- The floor tile is made of soft PVC material, corrosion-proof and moisture-proof, durable environmental protection non-toxic.
- Net width: 11.5".





Shock pad optional

### RBM1414 --- Outdoor Area Floor Tile

Size	370x370x16mm	Material	PP
Color	Red,Blue,Yellow,Black,Green, Grey		

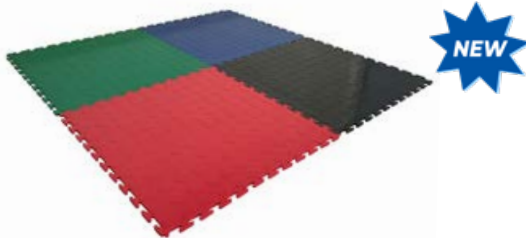
- Shock pad optional.
- Ideal for outdoor area, basketball court.
- Effective water drainage,the tiles is an openwork pattern design which allows for ventilation and excess water, or rain to drain effectively.
- Effortless installation , these tiles require no tools or special hardware to install ,simply just snap the tiles together on any hard, level surface.
- Net width: 350mm.



### RBM1616---Modular Interlocking Cushion Tiles

Size	410x410x40mm	Material	PP
Color	Red,Blue,Yellow,Black,Green, Grey		

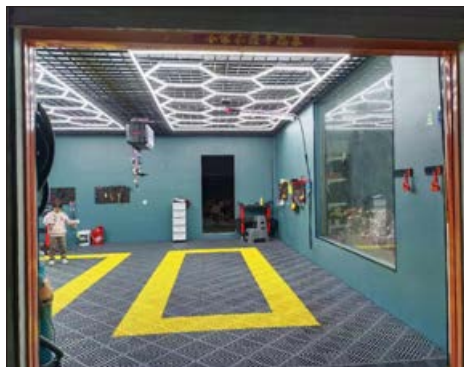
- Modular Interlocking Cushion Tiles, square and thick buckle design, not easy to be displaced and deformed even under strong external force impact.
- Back design with multiple support points for enhanced load-bearing capacity.
- The large hole design allows for stronger drainage and sludge discharge, making it easy to clean.
- Used in car wash or repair shops, with a height higher than regular mats.
- Net width: 400mm.

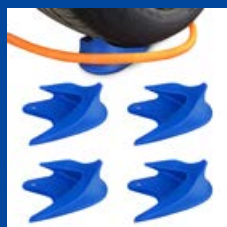
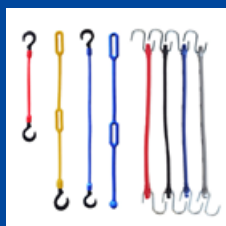
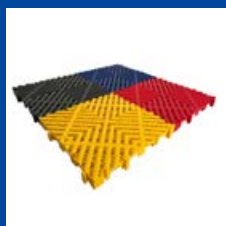


### RBM2020 --- Insulated Floor Tile

Size	510x510x6mm	Material	PP
Color	Red,Blue,Yellow,Black,Green, Grey		

- It is insulated and is used to repair electric vehicles safely.
- Ideal for EV workshop, garage.
- Durable premium garage flooring, built to withstand a harsh garage environment.
- Quick and easy installation, interlocking tiles simply snap together.
- Slip resistant and easy to clean, the durable surface won't stain, making clean-up a breeze.





## QINGDAO RUNBELL CO.,LTD.

ADD: QINGDAO FREE TRADE ZONE, CHINA

TEL: 86-532-86873761

E-MAIL: PELEHU@RUNBELL.COM

HTTP://WWW.RUNBELL.COM

2023 EDITION